

RTE. NO.	SECTION	COUNTY	TOTAL SHEETS	SHEET NO.
*	02-00001-05-BT	DuPAGE	113	1

\*SOUTHERN DuPAGE REGIONAL TRAIL  
GREENE VALLEY SPUR

**INDEX OF SHEETS**

- 1 COVER SHEET
- 2 GENERAL NOTES AND LEGEND
- 3 SUMMARY OF QUANTITIES
- 4-6 TYPICAL SECTIONS
- 7-10 SCHEDULES OF QUANTITIES
- 11-20 ALIGNMENT PLANS
- 21-27 TIE POINTS
- 28 BENCHMARKS
- 29-68 PAVEMENT MARKING, DRAINAGE, SIGNING, EROSION CONTROL AND PLAN & PROFILE
- 69 DISTRICT ONE TYPICAL PAVEMENT MARKINGS
- 70-85 TRAFFIC SIGNAL PLANS & DETAILS
- 86-89 DISTRICT ONE STANDARD TRAFFIC SIGNAL DESIGN DETAILS
- 90 DISTRICT ONE BD-24 CURB OR CURB AND GUTTER REMOVAL AND REPLACEMENT
- 91 DISTRICT ONE BD-36 FIRE HYDRANT TO BE REMOVED
- 92 EXISTING PEDESTRIAN BRIDGE DETAILS
- 93-94 SPECIAL DETAILS
- 95-113 CROSS SECTIONS

**LIST OF STANDARDS**

- 000001-04 STANDARD SYMBOLS, ABBREVIATIONS AND PATTERNS
- 280001-02 TEMPORARY EROSION CONTROL SYSTEMS
- 424001-03 CURB RAMPS FOR SIDEWALKS
- 442201-01 CLASS C AND D PATCHES
- 542301 PRECAST REINFORCED CONCRETE FLARED END SECTION
- 542401 METAL END SECTION FOR PIPE CULVERTS
- 602301 INLET, TYPE A
- 604036-01 GRATE, TYPE B
- 604086-01 FRAME AND GRATE, TYPE 23
- 606001-02 CONCRETE CURB TYPE B AND COMBINATION CONCRETE CURB AND GUTTER
- 701006-02 OFF-ROAD OPERATIONS, 2L, 2W, 15' TO PAVEMENT EDGE FOR SPEEDS > 45 MPH
- 701101-01 OFF-ROAD OPERATIONS, MULTILANE LESS THAN 15' AWAY FOR SPEEDS ≥ 45 MPH
- 701301-02 LANE CLOSURE 2L, 2W, SHORT TERM OPERATIONS
- 701306-01 LANE CLOSURE 2L, 2W, SLOW MOVING OPERATIONS - DAY ONLY FOR SPEEDS > 45 MPH
- 701801-03 LANE CLOSURE MULTILANE 1W OR 2W CROSSWALK FOR SIDEWALK CLOSURE
- 702001-05 TRAFFIC CONTROL DEVICES
- 720001 SIGN PANEL MOUNTING DETAILS
- 720006 SIGN PANEL ERECTION DETAILS
- 720011 METAL POSTS FOR SIGNS, MARKERS AND DELINEATORS
- 729001 APPLICATIONS OF TYPES A & B METAL POSTS (FOR SIGNS & MARKERS)
- 814001 CONCRETE HANDHOLES
- 814006 DOUBLE HANDHOLES
- 857001 STANDARD PHASE DESIGNATION DIAGRAMS AND PHASE SEQUENCES
- 878001-03 CONCRETE FOUNDATION DETAILS
- 880006 TRAFFIC SIGNAL MOUNTING DETAILS
- 886001 DETECTOR LOOP INSTALLATIONS
- 886006 TYPICAL LAYOUTS FOR DETECTOR LOOPS

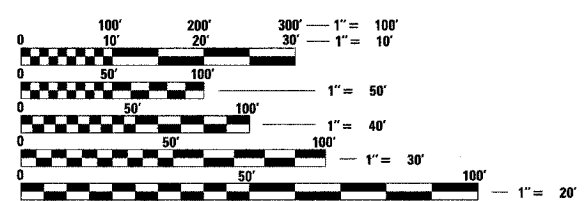
**STATE OF ILLINOIS**  
**DEPARTMENT OF TRANSPORTATION**  
**DIVISION OF HIGHWAYS**  
**DuPAGE COUNTY DIVISION OF TRANSPORTATION**  
**PROPOSED HIGHWAY PLANS**  
**SOUTHERN DuPAGE REGIONAL TRAIL**  
**GREENE VALLEY SPUR**  
**SECTION 02-00001-05-BT**  
**PROJECT M-8003(314)**  
**BIKE PATHS**  
**DARIEN & WILLOWBROOK, ILLINOIS**  
**DuPAGE COUNTY**  
**C-91-177-03**

CONTRACT NO. 83775



I.D.O.T. FEDERAL AID DESIGN ENGINEER: MAZHAR KHAN 847-705-4179 SCHAUMBURG, IL.

PLANS PREPARED BY  
**HUTCHISON ENGINEERING, Inc.**  
FOR  
DUPAGE COUNTY DIVISION OF TRANSPORTATION  
CHARLES F. TOKARSKI, P.E., COUNTY ENGINEER  
630-407-6900



FULL SIZE PLANS HAVE BEEN PREPARED USING STANDARD ENGINEERING SCALES. REDUCED SIZED PLANS WILL NOT CONFORM TO STANDARD SCALES. IN MAKING MEASUREMENTS ON REDUCED PLANS, THE ABOVE SCALES MAY BE USED.

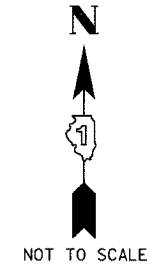
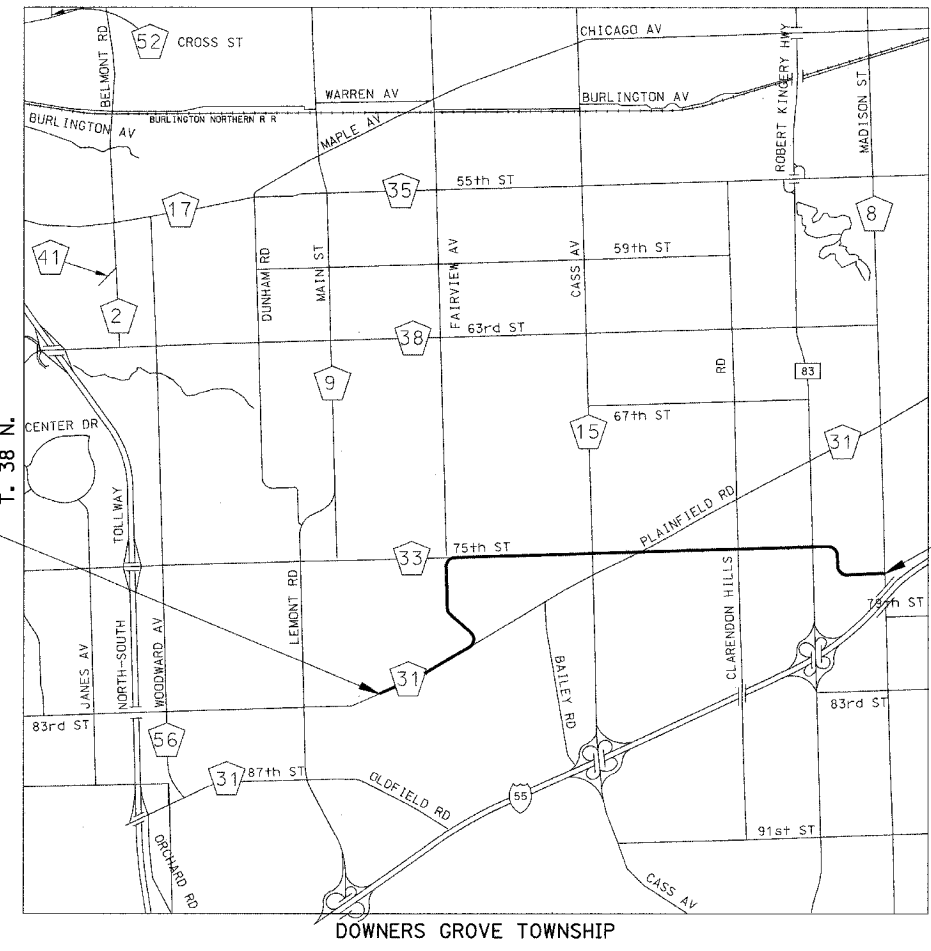
J.U.L.I.E.  
JOINT UTILITY LOCATION INFORMATION FOR EXCAVATION  
1-800-892-0123

**CONTRACT NO. 83775**

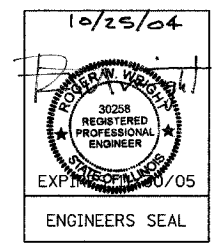
PROJECT BEGINS  
STA. 99+68.87

PROJECT LOCATED IN  
CITY OF DARIEN  
&  
VILLAGE OF WILLOWBROOK

DESIGN DESIGNATION  
MULTI-USE TRAIL



PROJECT ENDS  
STA. 716+20.88



STATE OF ILLINOIS  
DEPARTMENT OF TRANSPORTATION  
DIVISION OF HIGHWAYS

SUBMITTED October 28 20 04

Charles F. Tokarski DuPAGE D.O.T.

20

LOCAL ROADS AND STREETS

November 4 20 04

Dina D'Neve HP DISTRICT ENGINEER

**PRINTED BY THE AUTHORITY  
OF THE STATE OF ILLINOIS**

GROSS LENGTH OF PROJECT = 24,273.10 FEET = 4.597 MILES  
NET LENGTH OF PROJECT = 24,273.10 FEET = 4.597 MILES