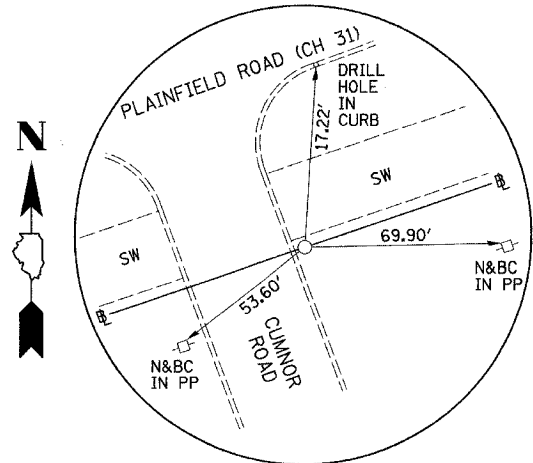
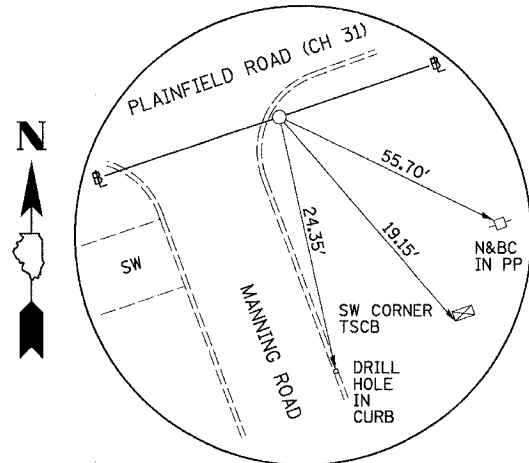


\*SOUTHERN DUPAGE REGIONAL TRAIL  
GREENE VALLEY SPUR  
CONTRACT NO. 83775

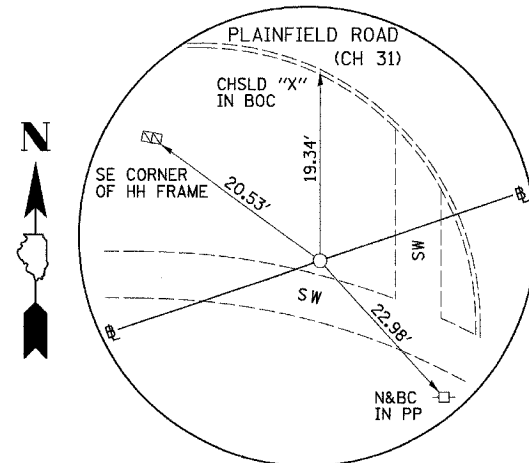
RT. NO.	SECTION	COUNTY	TOTAL SHEETS	SHEET NO.
02-00001-05-BT	DUPAGE	DUPAGE	113	22
STA. N/A		TO STA. N/A		
FED. ROAD DIST. NO.		ILLINOIS FED. AID PROJECT		



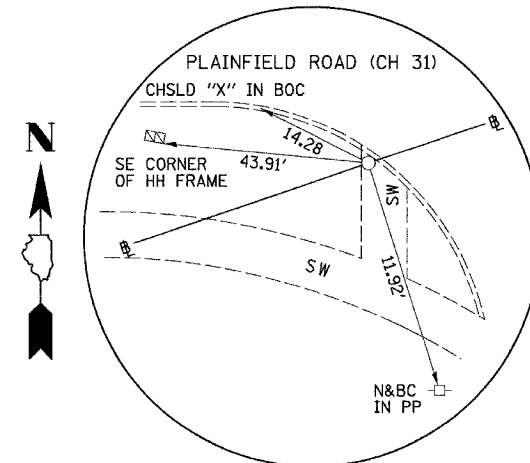
POT STA. 145+55.59  
PLAINFIELD ROAD (CH 31)  
(5/8" I-ROD)



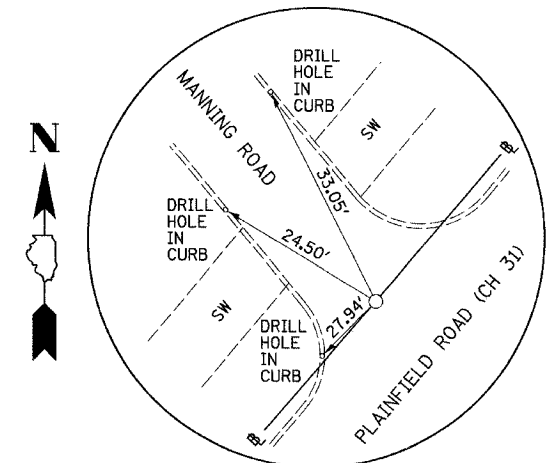
POT STA. 150+22.02  
PLAINFIELD ROAD (CH 31)  
(CHSLD "4" IN GUTTER)



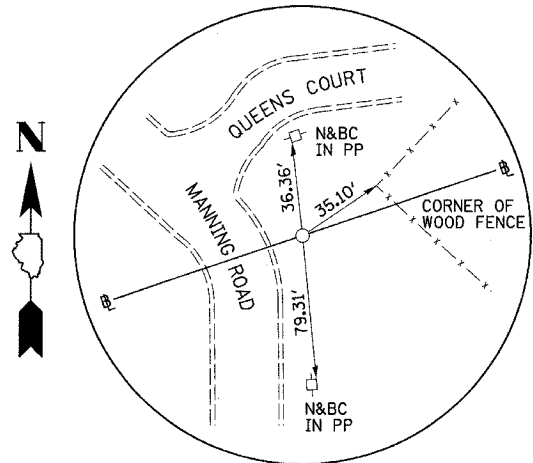
POT STA. 150+55.72  
PLAINFIELD ROAD (CH 31)  
(5/8" I-ROD)



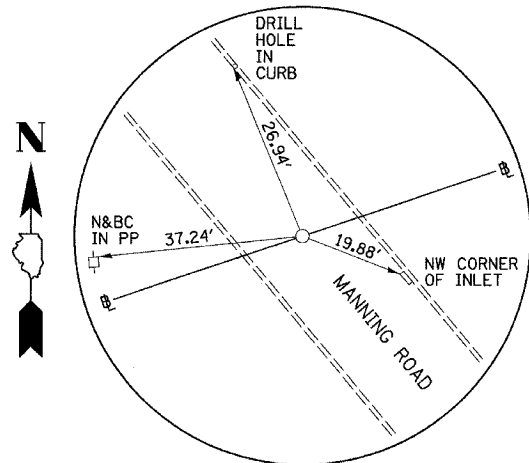
POT STA. 150+80.09  
PLAINFIELD ROAD (CH 31)  
(5/8" I-ROD IN SW)



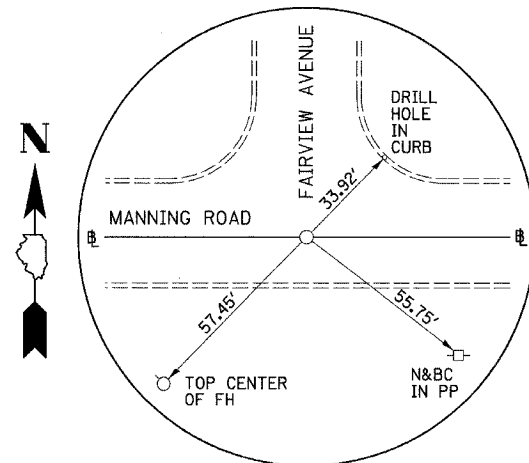
POT STA. 200+00.00  
PLAINFIELD ROAD (CH 31)  
(PK NAIL IN PVMT)



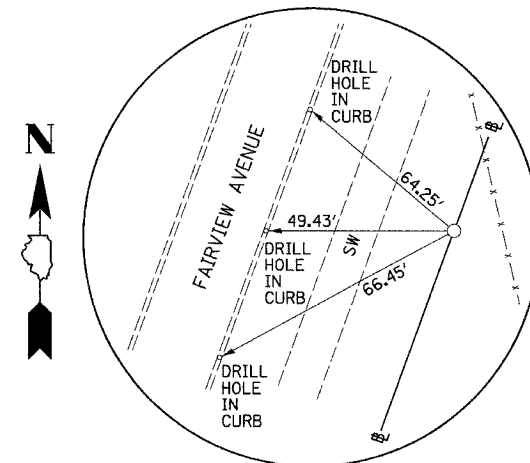
PI STA. 202+48.20  
PLAINFIELD ROAD (CH 31)  
(5/8" I-ROD)



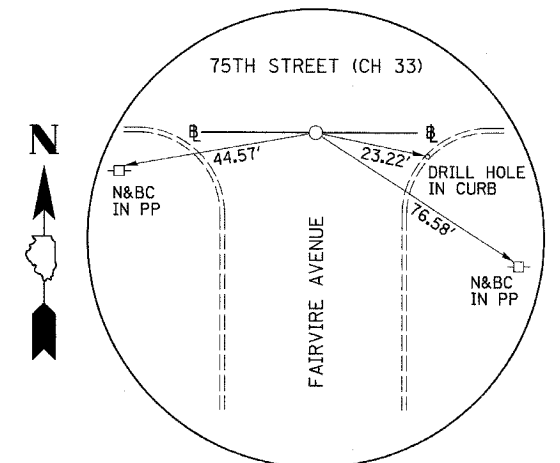
PI STA. 209+34.12  
PLAINFIELD ROAD (CH 31)  
(PK NAIL IN PVMT)



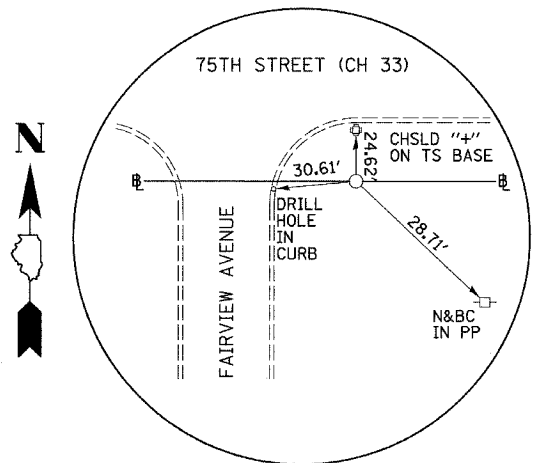
POT STA. 219+77.37 & POT STA. 300+00.00  
MANNING ROAD & FAIRVIEW AVENUE  
(PK NAIL IN PVMT)



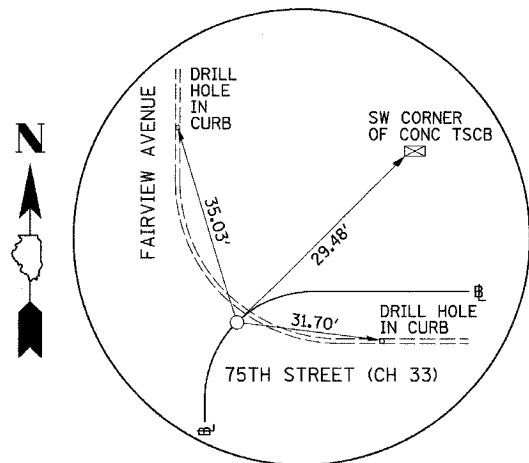
POT STA. 304+29.63  
FAIRVIEW AVENUE  
(5/8" I-ROD)



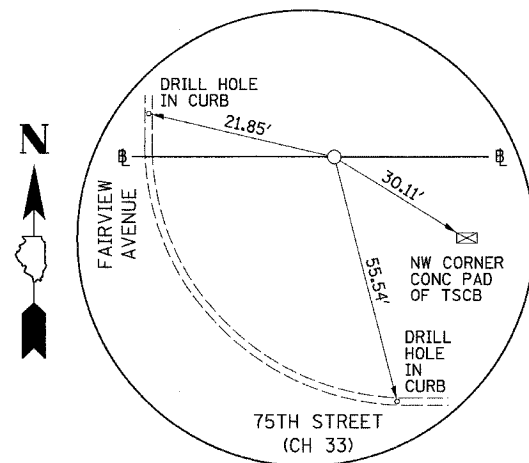
POT STA. 318+06.76  
FAIRVIEW AVENUE  
(PK NAIL IN PVMT)



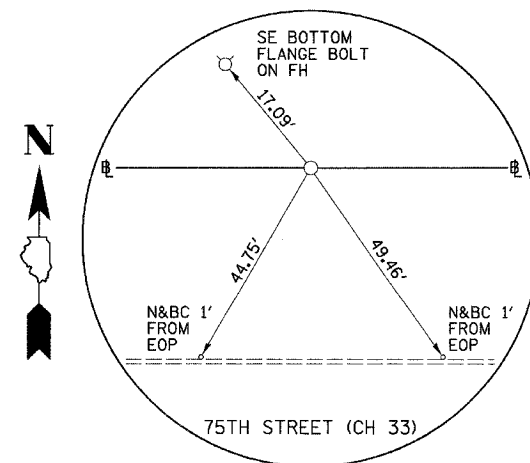
POT STA. 318+60.58  
FAIRVIEW AVENUE  
(5/8" I-ROD)



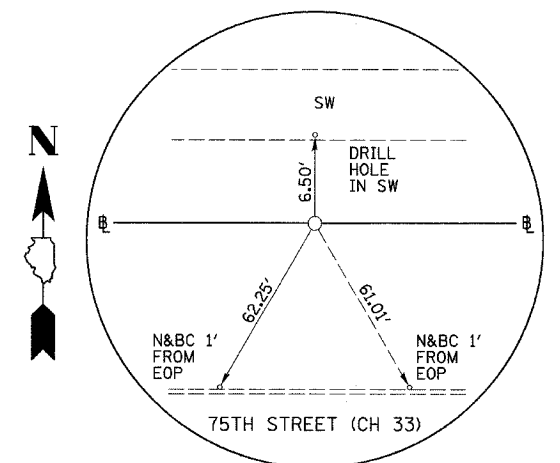
POT STA. 319+74.05 & PC STA. 400+00.00  
75TH STREET (CH 33)  
(PK NAIL IN PVMT)



PI STA. 400+40.62  
75TH STREET (CH 33)  
(5/8" I-ROD)



PI STA. 406+92.01  
75TH STREET (CH 33)  
(5/8" I-ROD)



PI STA. 408+20.22  
75TH STREET (CH 33)  
(5/8" I-ROD)