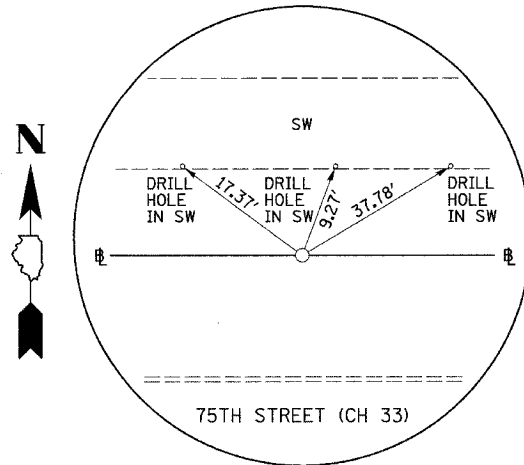
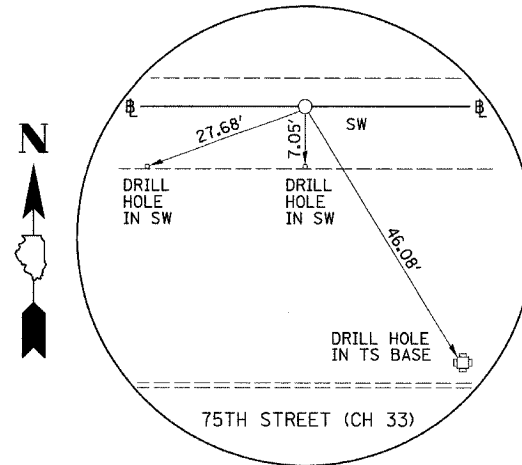


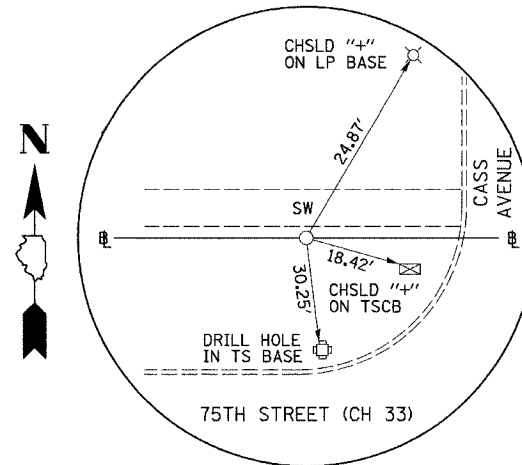
RTE. NO.	SECTION	COUNTY	TOTAL SHEETS	SHEET NO.
02-00001-05-BT	DUPAGE	ILLINOIS	113	24
STA. N/A		TO STA. N/A		
FED. ROAD DIST. NO.		FED. AID PROJECT		



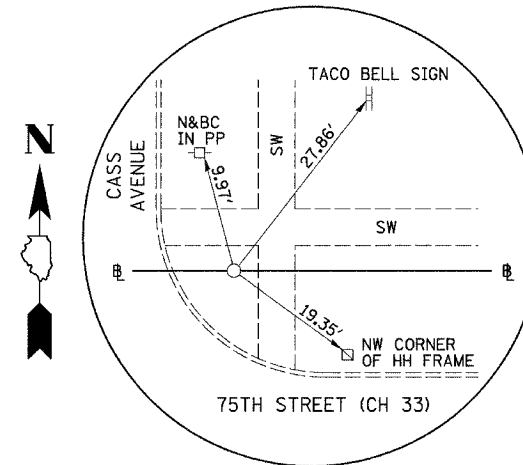
PI STA. 443+02.25
75TH STREET (CH 33)
(5/8" I-ROD)



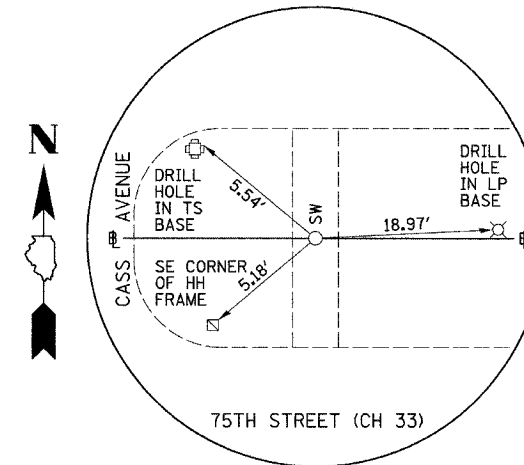
PI STA. 452+11.25
75TH STREET (CH 33)
(CHSLD "4" ON SW)



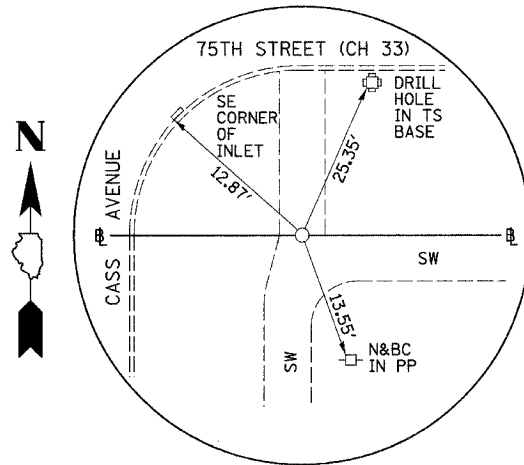
PI STA. 452+42.10
75TH STREET (CH 33)
(5/8" I-ROD)



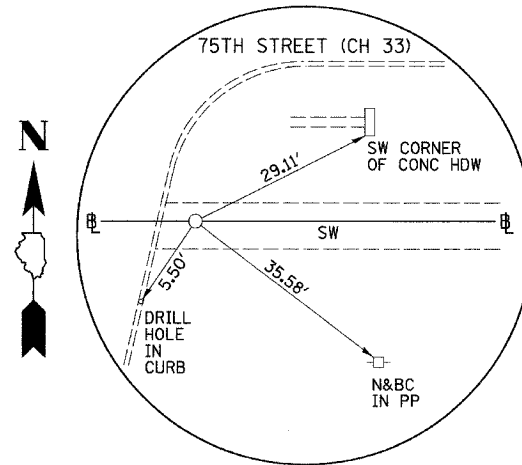
POT STA. 453+50.98
75TH STREET (CH 33)
(5/8" I-ROD)



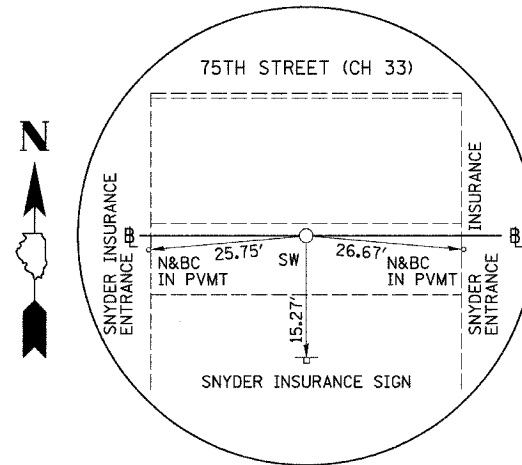
POT STA. 454+45.75 & POT STA. 500+00.00
75TH STREET (CH 33)
(CHSLD "4" ON SW)



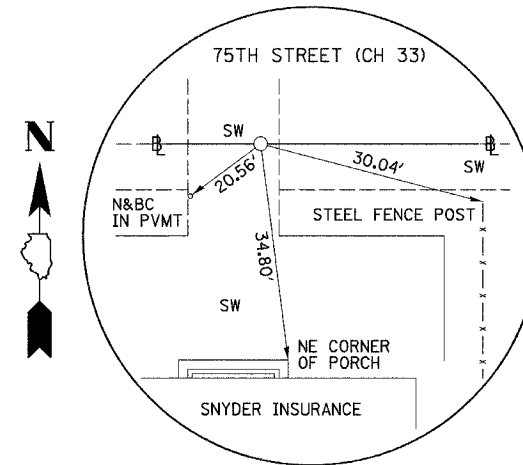
POT STA. 500+67.24
75TH STREET (CH 33)
(CHSLD "4" ON SW)



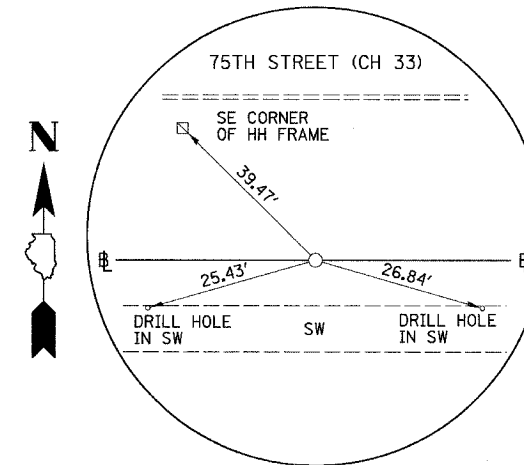
POT STA. 502+09.24
75TH STREET (CH 33)
(CHSLD "4" ON SW)



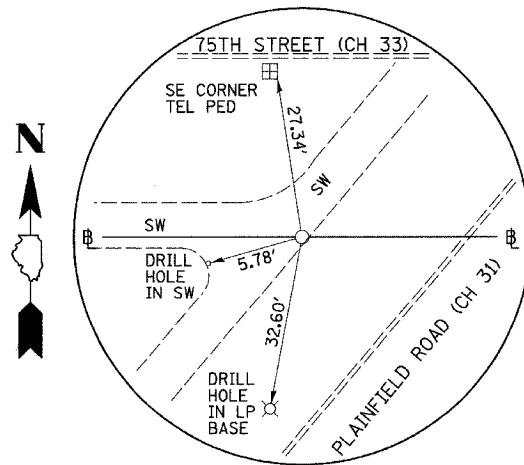
PI STA. 509+22.47
75TH STREET (CH 33)
(CHSLD "4" ON SW)



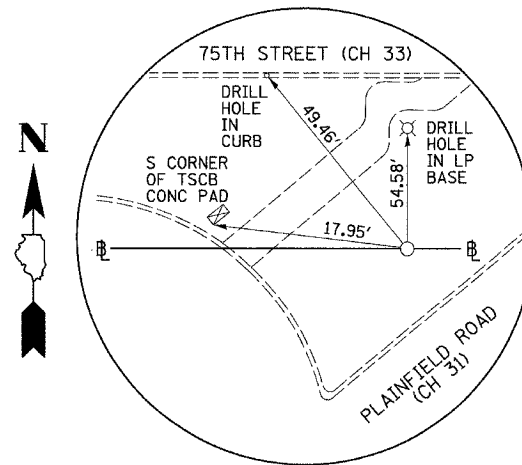
PI STA. 509+69.43
75TH STREET (CH 33)
(PK NAIL IN PVMT)



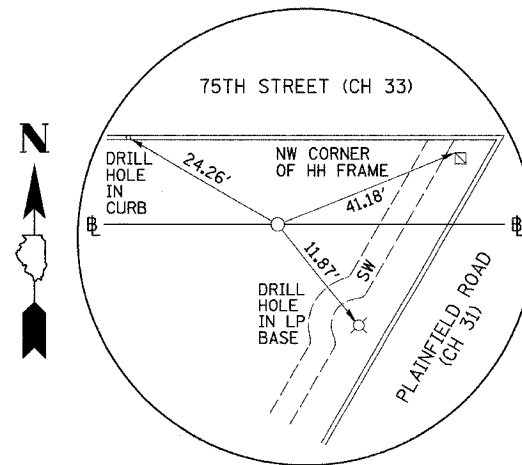
PI STA. 513+99.00
75TH STREET (CH 33)
(5/8" I-ROD)



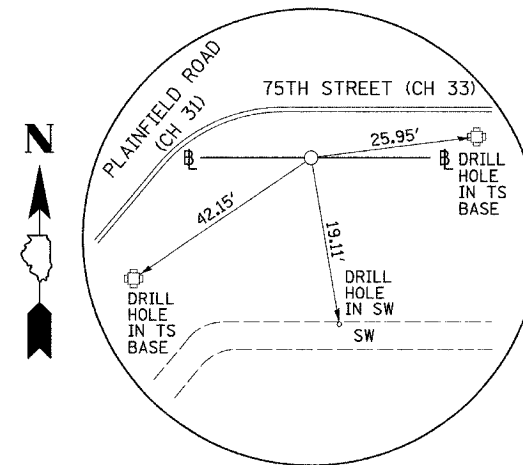
PI STA. 514+85.83
75TH STREET (CH 33)
(CHSLD "4" ON SW)



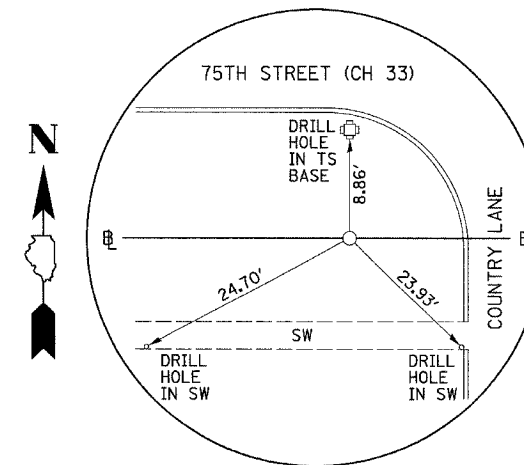
PI STA. 515+85.45
75TH STREET (CH 33)
(5/8" I-ROD)



PI STA. 516+46.48
75TH STREET (CH 33)
(5/8" I-ROD)



PI STA. 518+48.70
75TH STREET (CH 33)
(5/8" I-ROD)



PI STA. 518+70.78
75TH STREET (CH 33)
(5/8" I-ROD)