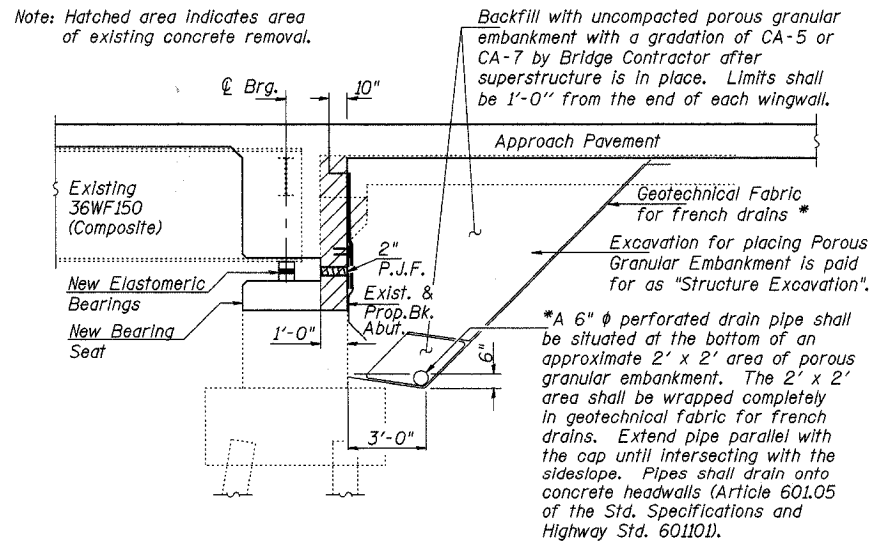


GENERAL NOTES

- Fasteners shall be high strength bolts. Bolts 7/8"φ, open holes 5/8"φ, unless otherwise noted.
- Field welding of construction accessories will not be permitted to beams or girders.
- All new structural steel shall be shop painted with an inorganic zinc rich primer per AASHTO M300, Type 1.
- Reinforcement bars shall conform to the requirements of AASHTO M31 or M322 Grade 60.
- Slope wall shall be reinforced with welded wire fabric, 6" x 6" - W4.0 x W4.0, weighing 58 lbs. Per 100 sq. ft.
- Plan dimensions and details relative to existing structure have been taken from existing plans and are subject to nominal construction variations. It shall be the Contractor's responsibility to verify such dimensions and details in the field and make necessary approved adjustments prior to construction or ordering of materials. Such variations shall not be cause for additional compensation for a change in the scope of work, however, the Contractor will be paid for the quantity actually furnished at the unit price for the work.
- Bearing seat surfaces shall be constructed or adjusted to the designated elevations within a tolerance of 1/8 inch. Adjustment shall be made either by grinding the surface or by shimming the bearing. Two 1/8" adjusting shims, of the dimensions of the bottom bearing plate, shall be provided for each bearing in addition to all other plates or shims. For Type I Elastomeric Bearings, two adjusting shims shall be provided for each bearing and placed as detailed.
- Prior to pouring the new concrete deck, all loose rust, loose mill scale, and other loose potentially detrimental foreign material shall be removed from the surfaces of the beams and end diaphragms in contact with concrete. The cost of this work will be included in the pay item covering removal of the existing concrete. All heavy rust and other tightly adhered potentially detrimental foreign matter shall also be removed from the surfaces of the beams and end diaphragms in contact with concrete. Tightly adhered paint may remain unless otherwise noted. This removal shall be accomplished by methods that will not damage the steel. The cost of this work shall be paid for according to Article 109.04.
- All existing construction accessories welded to the top flange over the piers between the quarter points of the beams shall be removed. The remaining weld shall be ground smooth and inspected for cracks using magnetic particle testing. Any cracks that can not be removed by grinding approximately 1/4 inch deep shall be identified and reported to the Bureau of Bridges and Structures for further disposition. The cost of this work shall be paid for according to Article 109.04.
- All construction joints shall be bonded.
- The existing structural steel coating contains lead. The Contractor shall take appropriate precautions to deal with the presence of lead on this project.
- Field painting of structural steel shall be done under a separate painting contract.
- Existing structural steel shall only be cleaned and painted as required by the special provision "Cleaning and Painting Contact Surface Areas of Existing Steel Structures."
- The contractor shall test the welds at the end of the existing cover plates for cracks after the removal of the existing concrete deck. Dye penetrant, magnetic particle, or other approved testing method shall be performed by personnel approved by the Engineer. If cracks are found, report them to the Bureau of Bridges & Structures for further processing. The cost of testing is included in Removal of Existing Concrete Deck. The cost of crack repair, if necessary, will be paid according to Article 109.04 of the Standard Specifications.

TOTAL BILL OF MATERIAL

ITEM	UNIT	SUPER	SUB	TOTAL
Porous Granular Embankment	Cu. Yd.		295	295
Concrete Removal	Cu. Yd.		31.6	31.6
Slope Wall Removal	Sq. Yd.		112	112
Removal of Existing Concrete Deck	Each	1		1
Jacking Existing Superstructure	L Sum	1		1
Protective Shield	Sq. Yd.	721		721
Structure Excavation	Cu. Yd.		195	195
Slope Wall 4"	Sq. Yd.		202	202
Concrete Structures	Cu. Yd.		39.0	39.0
Concrete Superstructure	Cu. Yd.	354.7		354.7
Bridge Deck Grooving	Sq. Yd.		918	918
Protective Coat	Sq. Yd.	1203		1203
Furnishing and Erecting Structural Steel	Pound	3458		3458
Elastomeric Bearing Assembly, Type I	Each		12	12
Elastomeric Bearing Assembly, Type II	Each		12	12
Reinforcement Bars, Epoxy Coated	Pound	75940	3900	79840
Stud Shear Connectors	Each	4032		4032
Name Plates	Each		2	2
Bar Splicers	Each	66		66
Floor Drains	Each	4		4
Drainage Scuppers, DS-12	Each	2		2



* Included in the cost of "Porous Granular Embankment".
SECTION THRU SEMI-INTEGRAL ABUTMENT
 (Dimensions at Rt. Δ's)

DESIGNED	A.J.E. & T.S.H.
CHECKED	M.D.C.
DRAWN	A.J.E. & T.S.H.
CHECKED	M.D.C.

GENERAL NOTES & TOTAL BILL OF MATERIAL

IL ROUTE 10 OVER I-72
 F.A.I. ROUTE 72 SECTION 74-70HBR
 PIATT COUNTY
 STA. 1421+61.77
 S.N. 074-0007

CUMMINS ENGINEERING CORPORATION

JOB #: 088
 FILE: 088BILLMAT
 DATE: 6/30/04