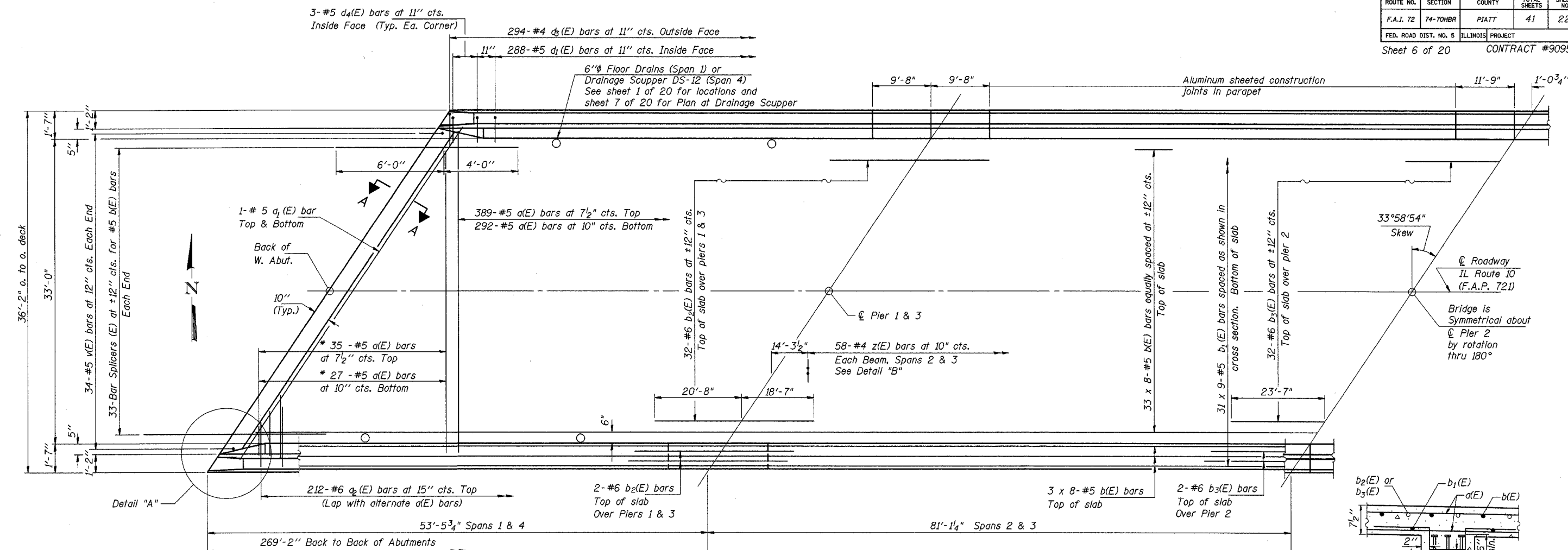
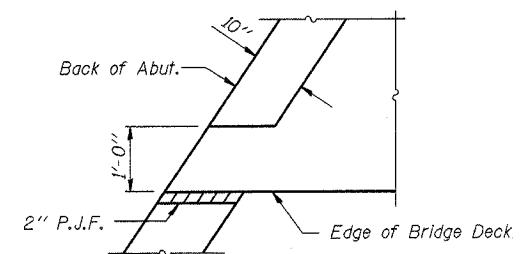


ROUTE NO.	SECTION	COUNTY	TOTAL SHEETS	SHEET NO.
F.A.I. 72	74-70HBR	PIATT	41	22
FED. ROAD DIST. NO. 5		ILLINOIS PROJECT		

Sheet 6 of 20 CONTRACT #90957



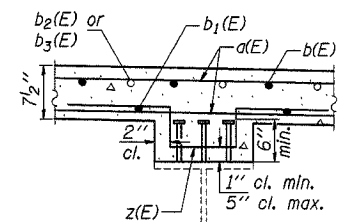
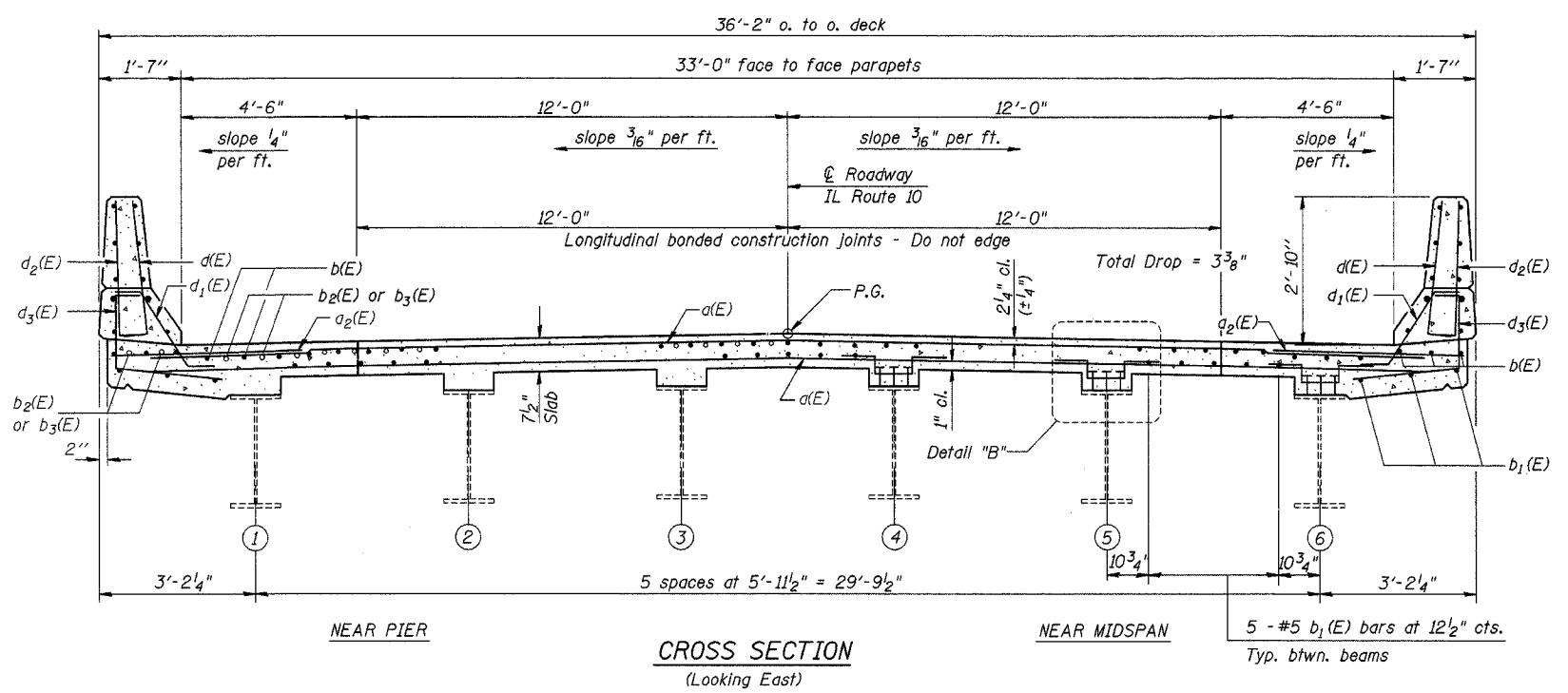
* Order a(E) full length. Cut to fit skew and use remainder of bars in opposite end.



(parapet and approach not shown) (similar at all four corners)

DESIGNED	A.J.E. & T.S.H.
CHECKED	M.D.C.
DRAWN	A.J.E. & T.S.H.
CHECKED	M.D.C.

SI-2-L 9-01-03



Beams 1 thru 6 Spans 2 & 3

DETAIL "B"

Showing Location of fillet reinforcement bar z(E)

Notes: See Sheet 7 of 20 for superstructure details, parapet reinforcement, and Bill of Material. Reinforcement bars designated (E) shall be epoxy coated. Bars indicated thus 20 x 3-#5 etc. indicates 20 lines of bars with 3 lengths per line. See Sheet 8 of 20 for diaphragm details and Section A-A. See Sheet 19 of 20 for Bar Splicer details.

SUPERSTRUCTURE

IL ROUTE 10 OVER I-72
 F.A.I. ROUTE 72 SECTION 74-70HBR
 PIATT COUNTY
 STA. 1421+61.77
 S.N. 074-0007

CUMMINS ENGINEERING CORPORATION

JOB #:	2088
FILE:	088SUPSTR
DATE:	6/30/04