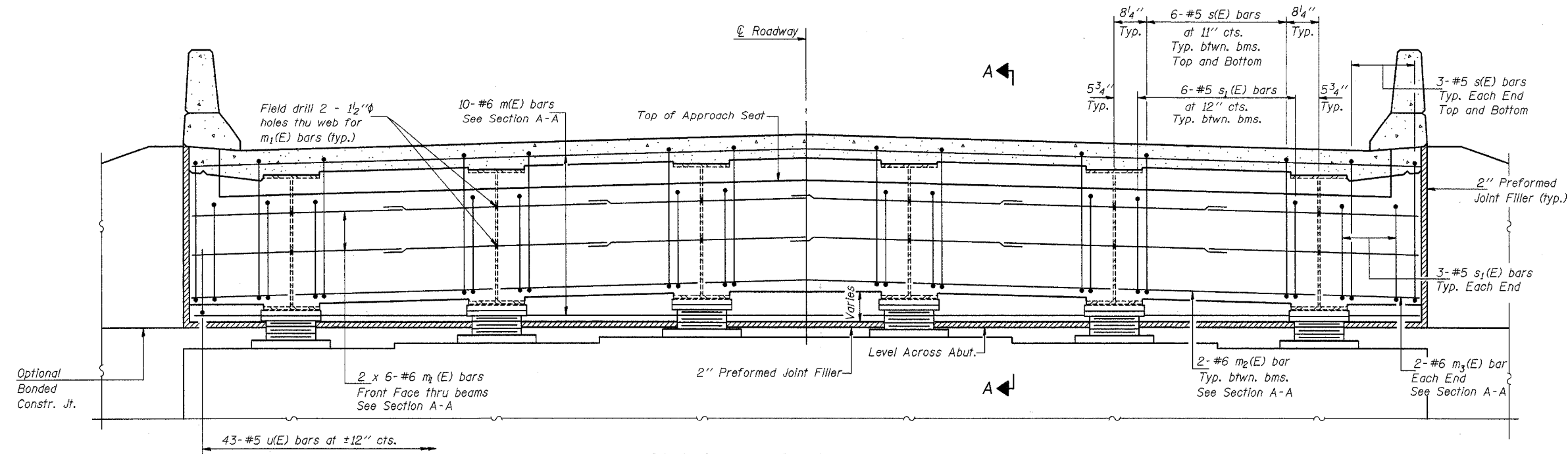
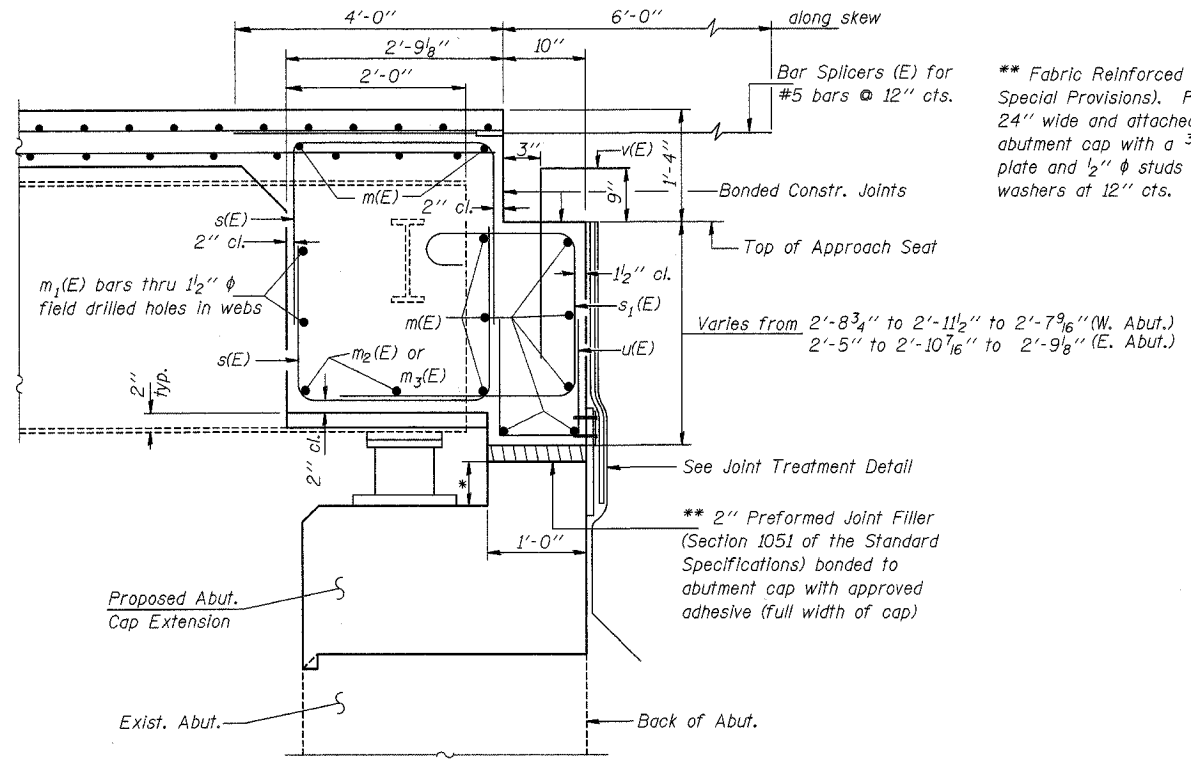


ROUTE NO.	SECTION	COUNTY	TOTAL SHEETS	SHEET NO.
F.A.I. 72	74-70HBR	PIATT	41	24
FED. ROAD DIST. NO. X		ILLINOIS PROJECT		
Sheet 8 of 20			CONTRACT #90957	

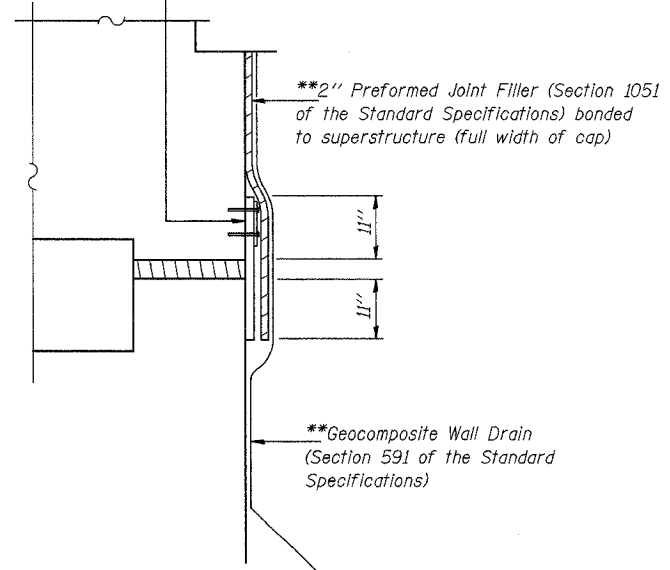


**MIN. BAR LAP**  
 #5 bar = 2'-2"  
 #6 bar = 2'-9"

**DIAPHRAGM ELEVATION AT ABUTMENT**  
 (East Abutment Shown - Looking East)  
 (West Abutment Similar by 180° Rotation Looking West)



**SECTION A-A**  
 (Dimensions at right angles to abutment, except as shown.)



**JOINT TREATMENT DETAIL**

Notes: Reinforcement bars in diaphragm are billed with superstructure on sheet 7 of 20.  
 Concrete in diaphragm is included with Concrete Superstructure on sheet 7 of 20.  
 The s(E) and s1(E) bars shall be placed parallel to the beams. Spacing for these bars shall be at right angles to the beams.  
 For anchorage assembly details see sheet 12 of 20.  
 For details of bars u(E), s(E), & s1(E) see sheet 7 of 20.  
 For location of drilled holes in beams see sheet 10 of 20.

DESIGNED	A.J.E. & T.S.H.
CHECKED	M.D.C.
DRAWN	A.J.E. & T.S.H.
CHECKED	M.D.C.

\* Varies see sheet 15 & 16 of 20  
 \*\* Cost Included with Concrete Superstructure

**SUPERSTRUCTURE DETAILS**

IL ROUTE 10 OVER I-72  
 F.A.I. ROUTE 72 SECTION 74-70HBR  
 PIATT COUNTY  
 STA. 1421+61.77  
 S.N. 074-0007

CUMMINS ENGINEERING CORPORATION	JOB #: 2088
	FILE: 088DIAPH
	DATE: 6/30/04