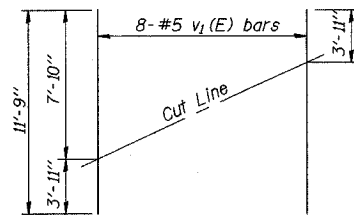
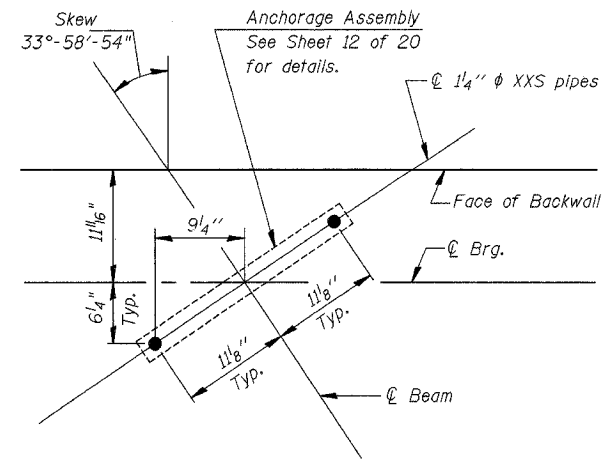


ROUTE NO.	SECTION	COUNTY	TOTAL SHEETS	SHEET NO.
F.A.I. 72	74-70HBR	PIATT	41	33
FED. ROAD DIST. NO. 5	ILLINOIS	PROJECT	Sheet 17 of 20 CONTRACT #90957	



FIELD CUTTING DIAGRAM - V₁ BARS

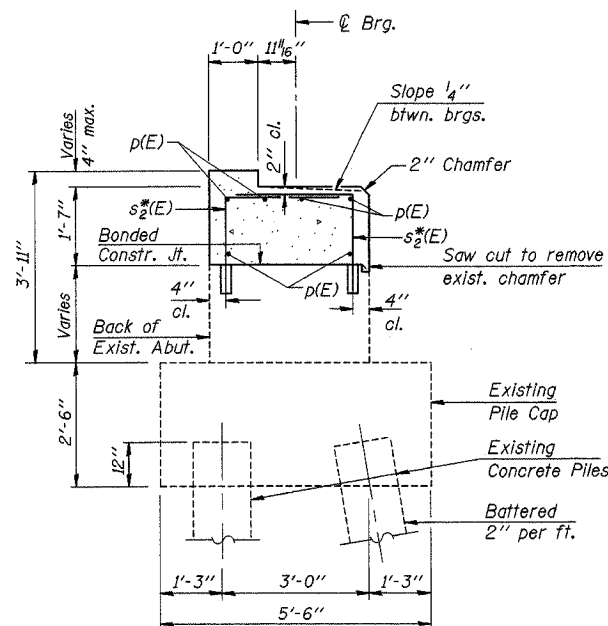
Order v₁(E) bars full length. Cut as shown and use remainder of bars in opposite face.



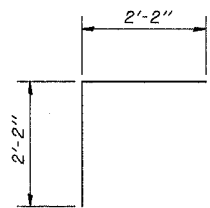
ANCHORAGE ASSEMBLY LAYOUT AT ABUTMENTS

MIN. BAR LAP

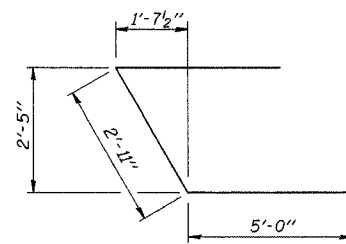
#7 bar = 3'-5"



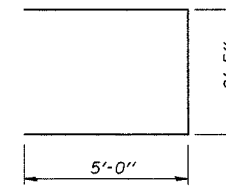
SEC. THRU ABUT.
(Dim. at Rt. L's unless noted)



BAR s₂^{*}(E)



BAR u₁(E)



BAR u₂(E)

**TWO ABUTMENTS
BILL OF MATERIAL**

Bar	No.	Size	Length	Shape
h(E)	24	#5	7'-11"	—
h ₁ (E)	24	#5	14'-0"	—
h ₂ (E)	16	#5	9'-4"	—
h ₃ (E)	16	#5	3'-6"	—
p(E)	24	#7	22'-0"	—
s ₂ [*] (E)	158	#4	4'-4"	└
u ₁ (E)	4	#6	12'-11"	└
u ₂ (E)	4	#6	12'-5"	└
v ₁ (E)	32	#5	11'-9"	—
Structure Excavation		Cu. Yd.	178	
Concrete Structures		Cu. Yd.	26.9	
Reinforcement Bars, Epoxy Coated		Pound	2850	

DESIGNED	A.J.E. & T.S.H.
CHECKED	M.D.C.
DRAWN	A.J.E. & T.S.H.
CHECKED	M.D.C.

Note: All bars designated with an asterisk (ex. s₂^{*}(E)) shall be epoxy grouted in accordance with Section 584 of the Standard Specifications. Minimum embedment = 9". Locate bars to miss existing reinforcement.

Work this sheet with sheets 15 and 16 of 20.

ABUTMENT DETAILS

IL ROUTE 10 OVER I-72
F.A.I. ROUTE 72 SECTION 74-70HBR
PIATT COUNTY
STA. 1421+61.77
S.N. 074-0007

CUMMINS ENGINEERING CORPORATION

JOB #:	2088
FILE:	088ABUTDETAIL
DATE:	6/30/04