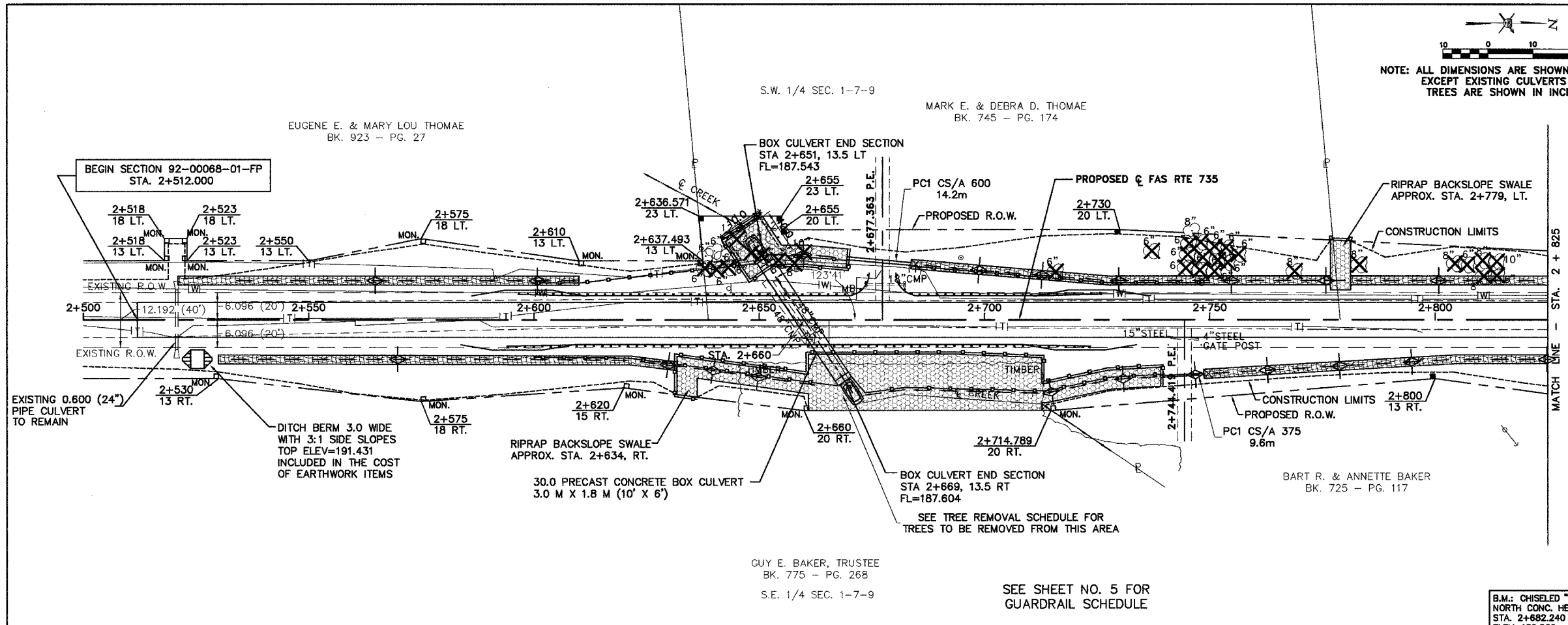


NOTE: ALL DIMENSIONS ARE SHOWN IN METERS.  
EXCEPT EXISTING CULVERTS AND  
TREES ARE SHOWN IN INCHES.



REVISIONS

Sheppard Morgan & Schwaab, Inc.  
CONSULTING ENGINEERS & LAND SURVEYORS  
10 Central Industrial Dr  
Northgate Center  
Greenville City, IL 62040  
618/677-8765



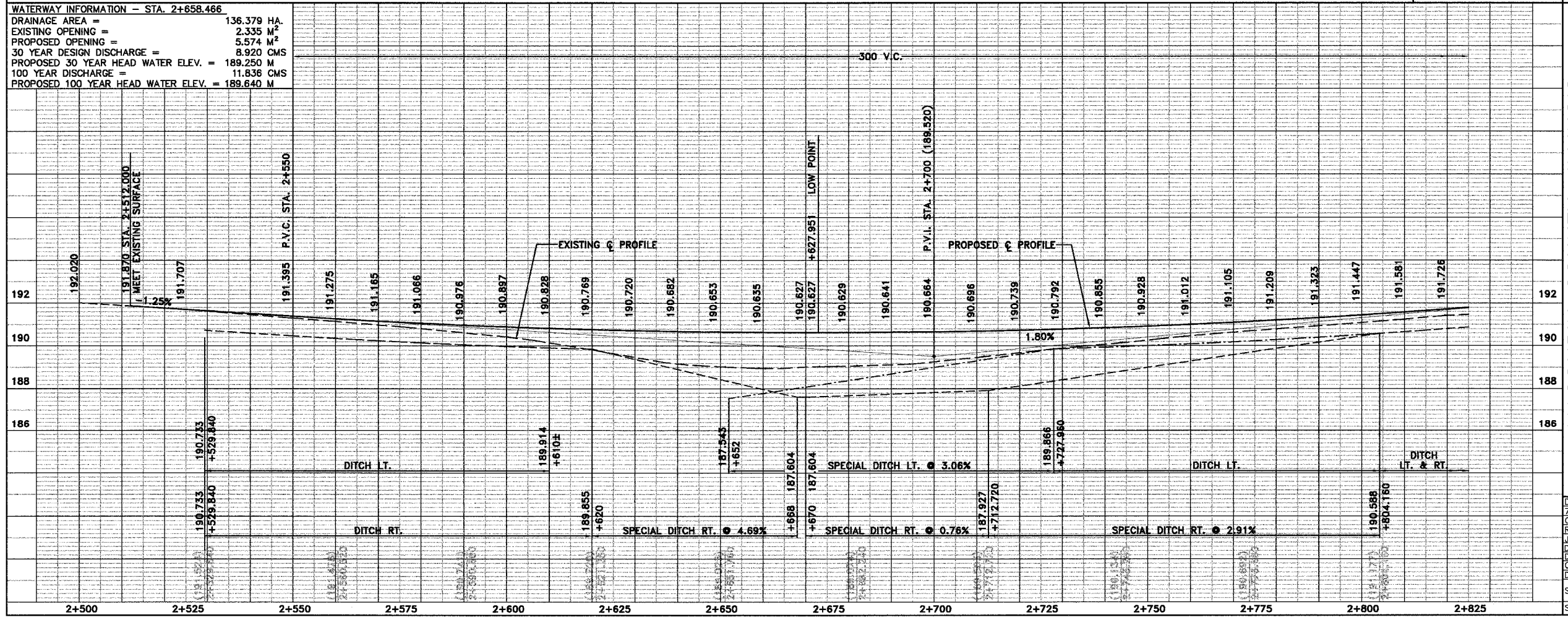
B.M.: CHISELED "C" N.E. CORNER  
NORTH CONC. HEADWALL  
STA. 2+682.240 - 7.315 LT.  
ELEV. 189.229

GUY E. BAKER, TRUSTEE  
BK. 775 - PG. 268  
S.E. 1/4 SEC. 1-7-9

SEE SHEET NO. 5 FOR  
GUARDRAIL SCHEDULE

WATERWAY INFORMATION - STA. 2+658.466

|                                      |                      |
|--------------------------------------|----------------------|
| DRAINAGE AREA =                      | 136.379 HA.          |
| EXISTING OPENING =                   | 2.335 M <sup>2</sup> |
| PROPOSED OPENING =                   | 5.574 M <sup>2</sup> |
| 30 YEAR DESIGN DISCHARGE =           | 8.920 CMS            |
| PROPOSED 30 YEAR HEAD WATER ELEV. =  | 189.250 M            |
| 100 YEAR DISCHARGE =                 | 11.836 CMS           |
| PROPOSED 100 YEAR HEAD WATER ELEV. = | 189.640 M            |



MACOUPIN COUNTY, ILLINOIS  
SECTION 92-00068-01-FP  
FAS ROUTE 735 (SHIPMAN ROAD)  
PLAN & PROFILE

|           |               |
|-----------|---------------|
| DWG. NO.  | 735-PP9       |
| COGO FILE |               |
| REF. BK.  | FAS RTE. 735  |
| JOB NO.   | 455048        |
| DSN. BY.  | D.E.G.        |
| DWN. BY.  | CAD           |
| CHK. BY.  | D.E.G.        |
| DATE:     | OCTOBER, 2004 |
| SCALE:    | 1 : 500       |
| SHEET     | 9 OF 58       |