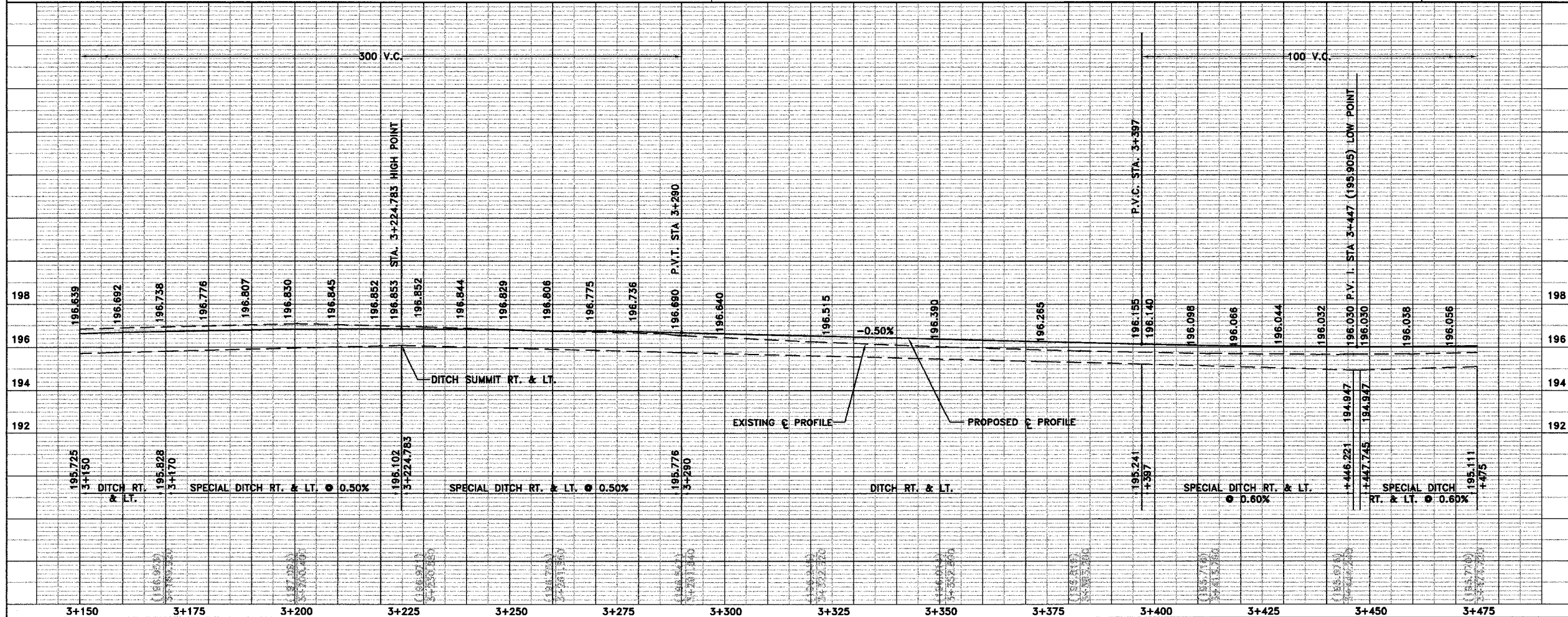


REVISIONS


Sheppard Morgan & Schwaab, Inc.  
CONSULTING ENGINEERS & LAND SURVEYORS  
10 Central Industrial Dr  
Northgate Center  
Granite City, IL 62040  
618/677-8700



B.M. CHISELED "C" N.E. CORNER  
NORTH CONC. HEADWALL  
STA. 2+682.240 - 7.315 LT.  
ELEV. 189.229



MACOUPIN COUNTY, ILLINOIS  
SECTION 92-00068-01-FP  
FAS ROUTE 735 (SHIPMAN ROAD)  
PLAN & PROFILE

DWG. NO.	735-PP11
DATE	DWG ACAD
FILE	COGO FILE
REF. BK.	FAS RTE. 735
JOB NO.	455048
DSN. BY:	D.E.S.
DWN. BY:	CAD
CHK. BY:	D.E.G.
DATE:	OCTOBER, 2004
SCALE:	1 : 500
SHEET	11 OF 58

S:\Drawing\Macoupin\rs-735\p11\11-735-pp1.dwg, 10/04/2004 02:04:12 PM, jfman, 1:127