

B.M. - RR Spike in 10" Tree
27' Rt. Sta. 27+29
Elev. 460.54

Existing Structure - Timber deck with steel stringers on closed concrete abutments with timber caps. 14.0' W x 26.3' L

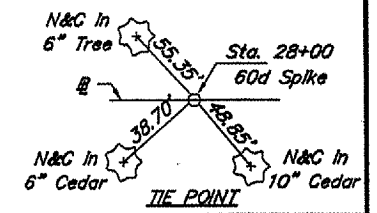
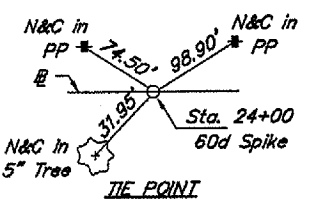
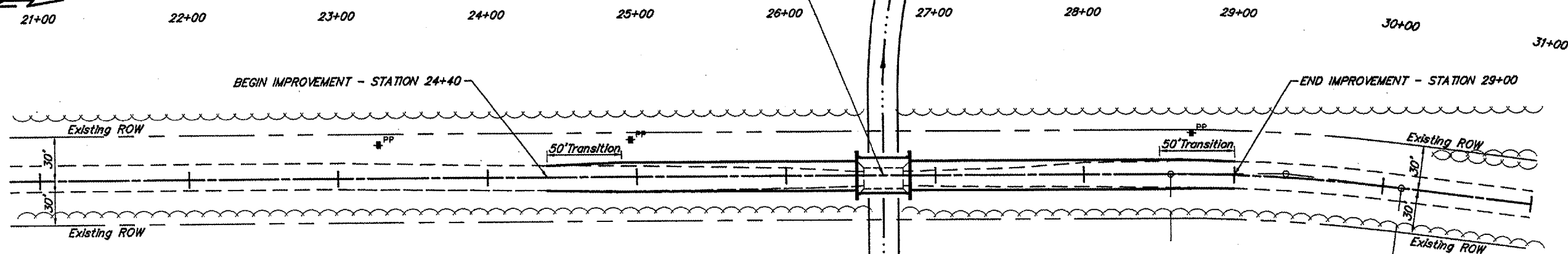
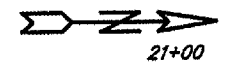
Station 26+65 - Single span precast prestressed concrete deck beam bridge 36.50' bk-bk Abutments

Existing structure to be removed

ROUTE	SECTION	COUNTY	TOTAL SHEETS	SHEET NO.
CH 1	02-00091-00-BR	UNION	11	2

PROJECT NO. BROS-181(17) CONTRACT NO. 99206

CURVE DATA
PI STA=29+34.91
 $\Delta = 7^{\circ}24'53''$ $T = 77.76'$
 $D = 4^{\circ}46'29''$ $L = 155.29'$
 $R = 1200.00'$ $E = 2.52'$



SCALES:
1" = 80' HOR
1" = 10' VER

Tree Removal Limits: From Station 24+40 to Station 27+00 from the C of the road to the existing easterly right-of-way line - 0.2 Acres.

