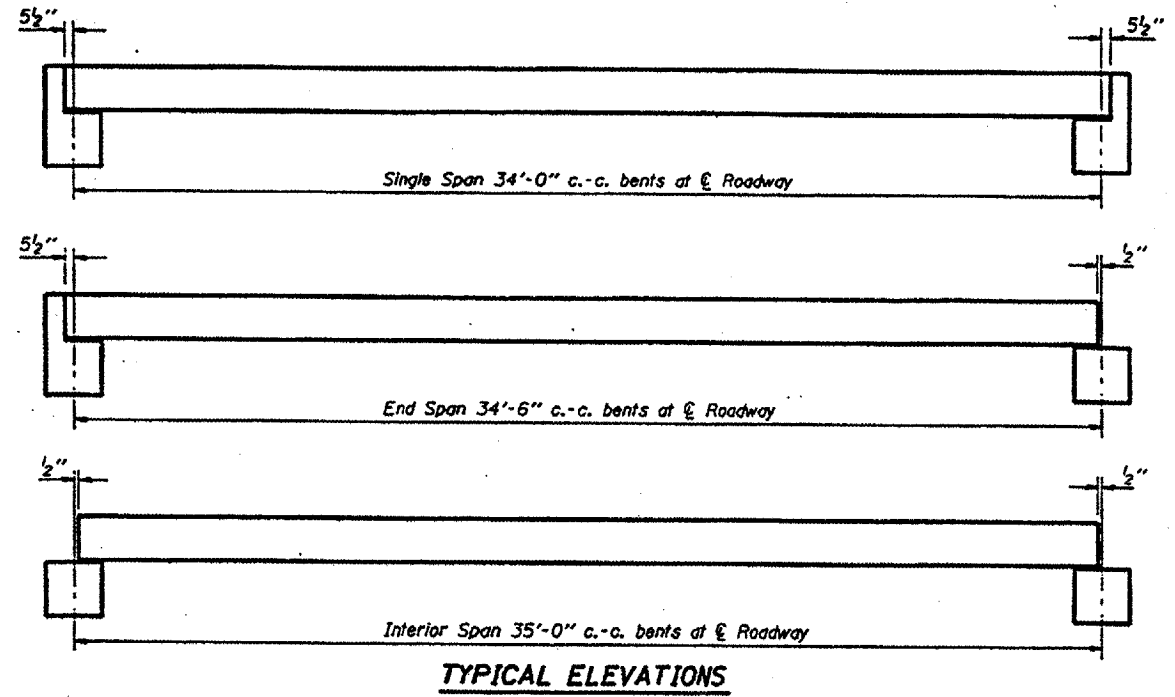
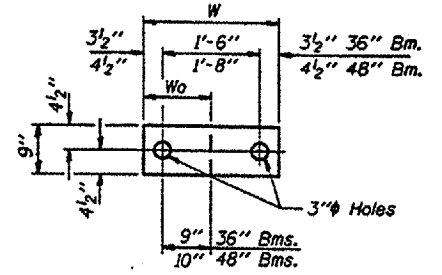
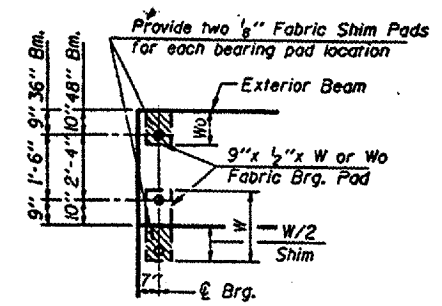


ROUTE	SECTION	COUNTY	TOTAL SHEETS	SHEET NO.
CH 1	02-00091-00-BR	UNION	11	4
PROJECT NO. BROS-181(17)			CONTRACT NO. 99206	

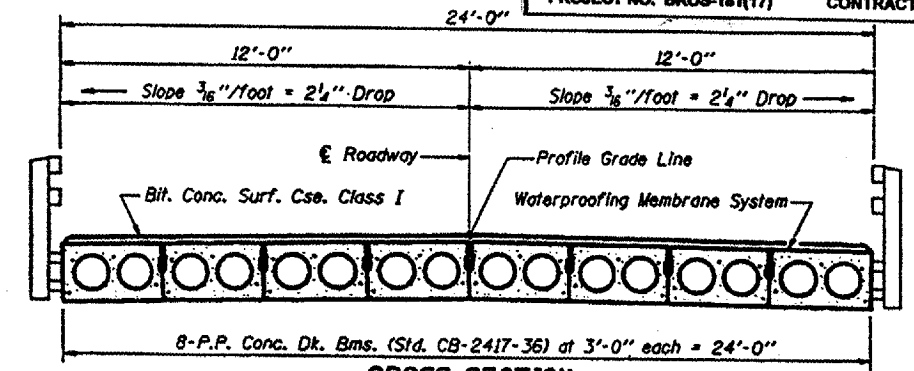


TYPICAL ELEVATIONS

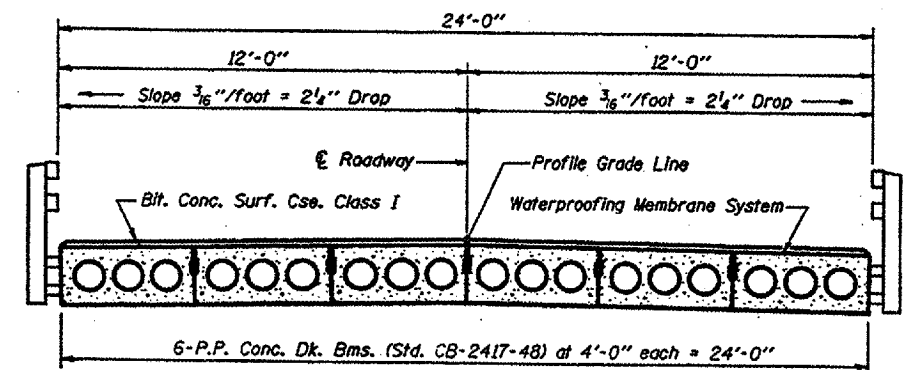


Beam	W	Wo
36"	2'-1"	1'-0 1/2"
48"	2'-5"	1'-2 1/2"

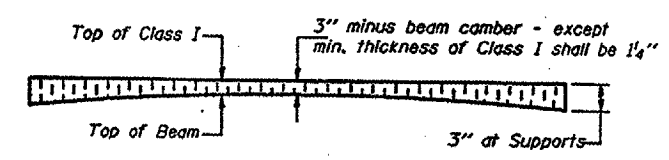
1/2" FABRIC BRG. PAD DETAILS



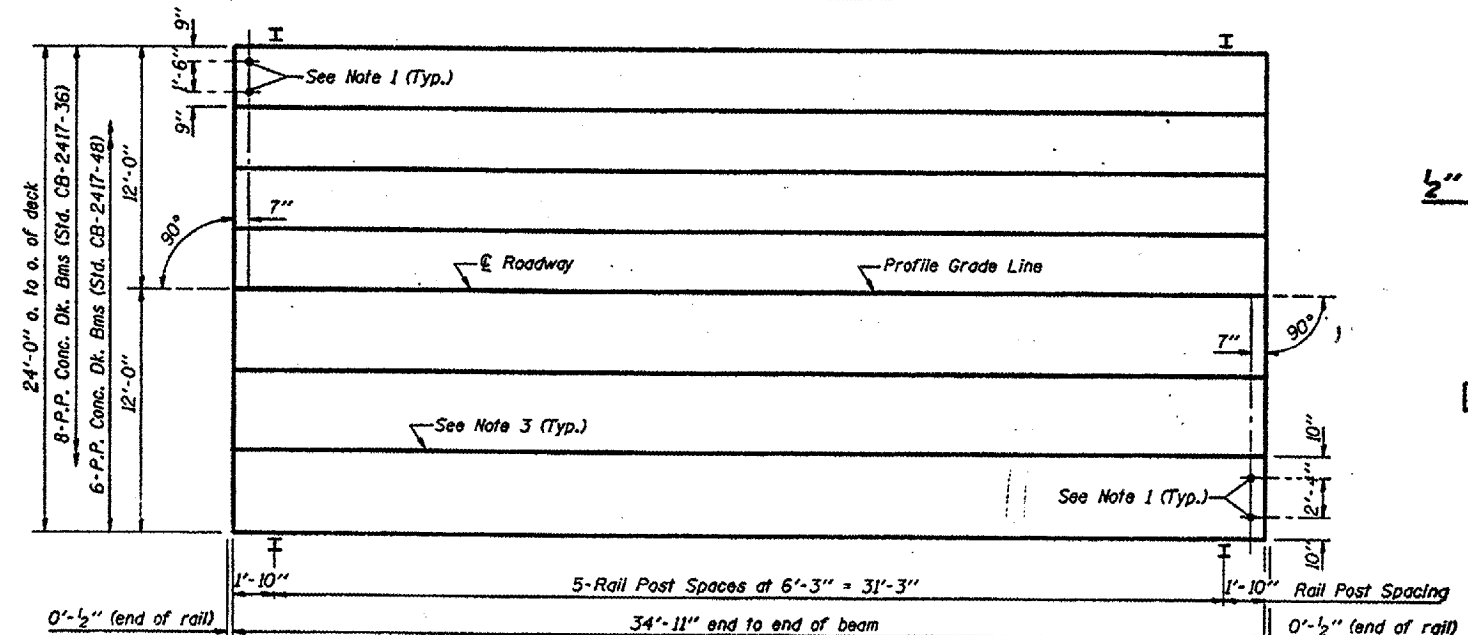
CROSS SECTION



CROSS SECTION



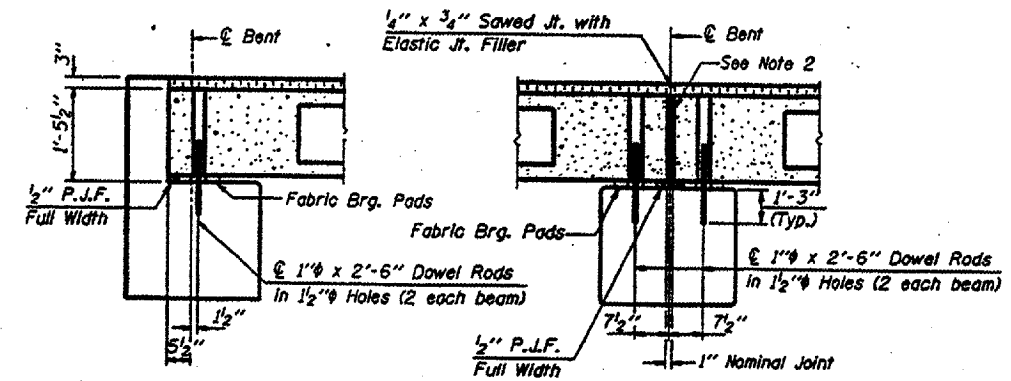
PROFILE OF OVERLAY



PLAN

NOTES

1. After beams have been erected, holes shall be drilled into substructure and anchor dowels placed. Dowel holes shall be filled with non-shrink grout to top of beam and allowed to cure min. 24 hrs. prior to grouting the shear keys.
2. Nominal 1" joint at E Pier shall be filled with non-shrink grout.
3. Longitudinal keys shall be grouted.



SECTION AT ABUTS.
(Along E Beams)

SECTION AT PIERS
(Along E Beams)

QUANTITIES FOR ONE SPAN

P.P. Conc. Dk. Bm. 17" Dp.	840 Sq. Ft.
Steel Railing	70 Ft.
Bit. Conc. Surf. Coe. Class I	12.7 Tons
Waterproofing Membrane System	93.3 Sq. Yds.

Illinois Department of Transportation
 PASSED NOVEMBER 1, 1995
Paul J. O'Connell
 Engineer of Bridge Design
 APPROVED NOVEMBER 1, 1995
Robert E. Anderson
 Engineer of Bridges and Structures

P.P.C. DECK BEAM SUPERSTRUCTURE
 24' RDWY. 17" BMS. 35' SPAN 0° SKEW
 STANDARD CS-2417-35