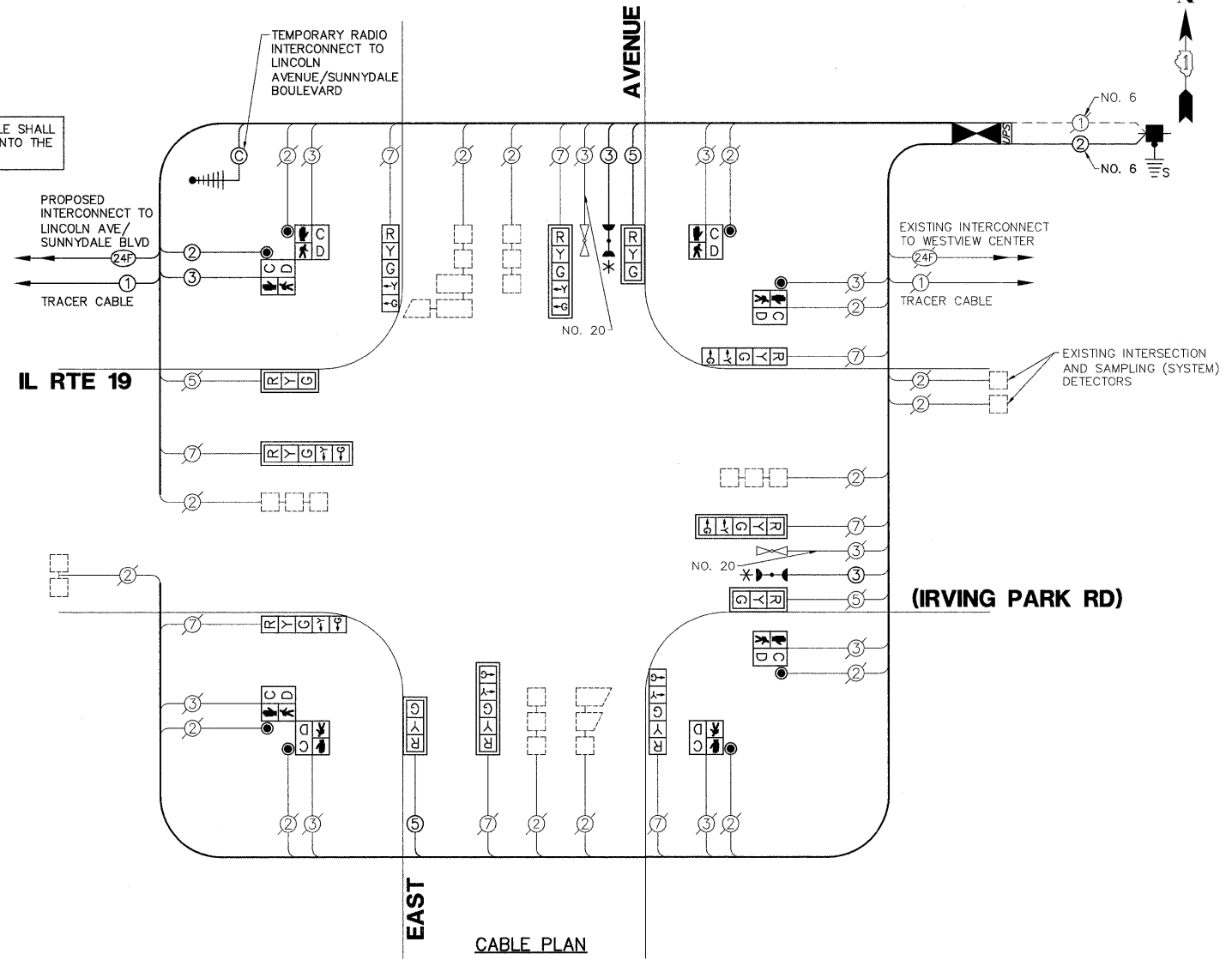


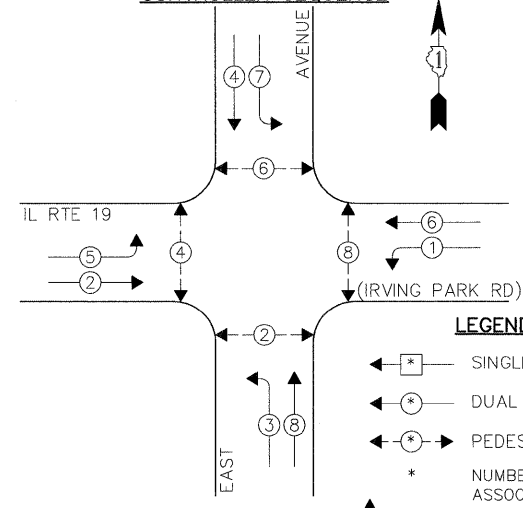
SCHEDULE OF QUANTITIES
IL ROUTE 19 (IRVING PARK ROAD) AT EAST AVENUE

NO.	QUANT.	UNIT	DESCRIPTION
1.	4	CU YD	EARTH EXCAVATION
2.	10	SQ YD	SUB-BASE GRANULAR MATERIAL, TYPE B 4"
3.	990	SQ FT	PORTLAND CEMENT CONCRETE SIDEWALK 5 INCH
4.	96	SQ FT	DETECTABLE WARNINGS
5.	630	SQ FT	SIDEWALK REMOVAL
6.	140	FOOT	COMBINATION CURB AND GUTTER REMOVAL AND REPLACEMENT
7.	0.25	CAL MO	ENGINEER'S FIELD OFFICE, TYPE A
8.	0.10	L SUM	MOBILIZATION
9.	0.10	L SUM	TRAFFIC CONTROL AND PROTECTION, STANDARD 701501
10.	0.10	L SUM	TRAFFIC CONTROL AND PROTECTION, STANDARD 701606
11.	0.10	L SUM	TRAFFIC CONTROL AND PROTECTION, STANDARD 701701
12.	0.10	L SUM	TRAFFIC CONTROL AND PROTECTION, STANDARD 701801
13.	510	FOOT	THERMOPLASTIC PAVEMENT MARKING - LINE 6"
14.	265	SQ FT	THERMOPLASTIC PAVEMENT MARKING REMOVAL
15.	1	EACH	MAINTENANCE OF EXISTING TRAFFIC SIGNAL INSTALLATION
16.	1	EACH	FULL-ACTUATED CONTROLLER IN EXISTING CABINET, SPECIAL
17.	1	EACH	TRANSCEIVER - FIBER OPTIC
18.	157	FOOT	ELECTRIC CABLE IN CONDUIT, SIGNAL NO. 14 2C
19.	437	FOOT	ELECTRIC CABLE IN CONDUIT, SIGNAL NO. 14 3C
20.	86	FOOT	ELECTRIC CABLE IN CONDUIT, SERVICE, NO. 6 2 C
21.	4	EACH	TRAFFIC SIGNAL POST, GALVANIZED STEEL 16 FT.
22.	4	EACH	SIGNAL HEAD, LED, 1-FACE, 3-SECTION, MAST-ARM MOUNTED
23.	4	EACH	SIGNAL HEAD, LED, 1-FACE, 5-SECTION, BRACKET MOUNTED
24.	4	EACH	SIGNAL HEAD, LED, 1-FACE, 5-SECTION, MAST-ARM MOUNTED
25.	4	EACH	PEDESTRIAN SIGNAL HEAD, LED, 1-FACE, BRACKET MOUNTED WITH COUNTDOWN TIMER
26.	2	EACH	PEDESTRIAN SIGNAL HEAD, LED, 2-FACE, BRACKET MOUNTED WITH COUNTDOWN TIMER
27.	8	EACH	TRAFFIC SIGNAL BACKPLATE, LOUVERED, ALUMINUM
28.	9	EACH	INDUCTIVE LOOP DETECTOR
29.	8	EACH	PEDESTRIAN PUSH-BUTTON
30.	222	FOOT	REMOVE ELECTRIC CABLE FROM CONDUIT
31.	1	EACH	REMOVE EXISTING TRAFFIC SIGNAL EQUIPMENT
*32.	2	EACH	CONFIRMATION BEACON
33.	1	EACH	REMOVE EXISTING SERVICE INSTALLATION
34.	1	EACH	SERVICE INSTALLATION - POLE MOUNTED
35.	1	EACH	UNINTERRUPTIBLE POWER SUPPLY
36.	73	FOOT	ELECTRIC CABLE IN CONDUIT, GROUNDING, NO. 6 1C

* 100% OF COST TO THE VILLAGE OF STREAMWOOD

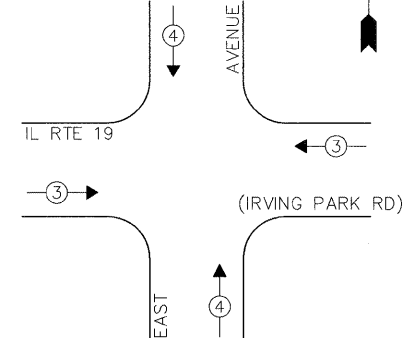


EXISTING AND PROPOSED CONTROLLER SEQUENCE



- LEGEND:**
- ◀ * → SINGLE ENTRY PHASE
 - ◀ * → DUAL ENTRY PHASE
 - ◀ * → PEDESTRIAN PHASE
 - * NUMBER REFERS TO ASSOCIATED PHASE
 - ◀ * → OVERLAP

EXISTING EMERGENCY VEHICLE PREEMPTION SEQUENCE



EXISTING AND PROPOSED PHASE DESIGNATION DIAGRAM

I.D.O.T. TRAFFIC SIGNAL INSTALLATION ELECTRICAL SERVICE REQUIREMENTS					TOTAL WATTAGE
TYPE	NO.	LAMPS	INCAND. L.E.D.	% OPERATION	
SIGNAL (RED)	12	135	17	0.50	102.0
SIGNAL (YELLOW)	12	135	25	0.25	30.0
SIGNAL (GREEN)	12	135	15	0.25	72.0
ARROW	8	135	12	0.10	9.6
PED. SIGNAL	8	90	25	1.00	200.0
CONTROLLER	1	-	100	1.00	100.0
LUMINAIRE	-	-	250	0.50	-
L.E.D. ST. NAME SIGN	-	-	64	0.50	-
VIDEO SYSTEM	-	-	150	1.00	-
BATTERY BACKUP	1	-	25	1.00	100.0
ILLUMINATED SIGN	-	-	25	0.05	-
TOTAL =					613.6

THE TRAFFIC SIGNAL CONTROL EQUIPMENT FOR THIS PROJECT SHALL BE "ECONOLITE" TO MATCH THE EXISTING ADJACENT SYSTEM.

Restoration of Work Area. Restoration of the traffic signal work area shall be incidental to the related pay items such as foundation, conduit, handhole, trench and backfill, etc., and no extra compensation shall be allowed. All roadway surfaces such as shoulders, medians, sidewalks, pavement, etc. shall be replaced in kind. All damage to mowed lawns shall be replaced with an approved sod, and all damage to unmowed fields shall be seeded in accordance with Standard Specifications 252 and 250 respectively.

ENERGY COSTS - BILLED TO: IDOT - DISTRICT 1
(ADDRESS) 201 W. CENTER COURT
(ADDRESS) SCHAUMBURG, IL 60196-1096
ENERGY SUPPLY - CONTACT: -
PHONE: -
COMPANY: COM-ED

FILE NAME =	USER NAME = ZACH WALLSTEN	DESIGNED - JRD	REVISED -
4085.862-866-CABLE.dwg		DRAWN - ZCW	REVISED -
	PLOT SCALE = 1" = .0833'	CHECKED - KLB	REVISED -
	PLOT DATE = 10/12/2010	DATE - 10/12/2010	REVISED -

STATE OF ILLINOIS
DEPARTMENT OF TRANSPORTATION

SCHEDULE OF QUANTITIES, CABLE PLAN, PHASE DESIGNATION
DIAGRAM, & EMERGENCY VEHICLE PREEMPTION SEQUENCE
IL ROUTE 19 (IRVING PARK ROAD) AT EAST AVENUE

FAP. RTE. VARIES	SECTION 2010-005TS	COUNTY COOK	TOTAL SHEETS 32	SHEET NO. 22
CONTRACT # 60K23			GHA #4085.865	

EXISTING EMERGENCY VEHICLE PREEMPTORS			
EMERGENCY VEHICLE PREEMPTOR	3	4	
MOVEMENT	←	↑	