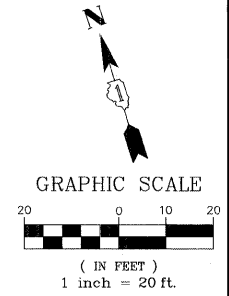


CONSTRUCTION NOTES:

- ① INSTALL UNINTERRUPTIBLE POWER SUPPLY UNIT.
- ② ALL CABINET MODIFICATIONS AND/OR LOAD SWITCH REPLACEMENTS REQUIRED FOR PROPER OPERATION OF THE LED SIGNAL INDICATORS TO THE SATISFACTION OF THE ENGINEER SHALL BE INCIDENTAL TO THE PAY ITEM: UNINTERRUPTIBLE POWER SUPPLY.
- ③ ALL EXISTING CONFIRMATION BEACONS SHALL BE RETROFITTED WITH LED INDICATORS. THIS WORK SHALL BE INCIDENTAL TO THE PAY ITEM: UNINTERRUPTIBLE POWER SUPPLY.



TRAFFIC SIGNAL LEGEND

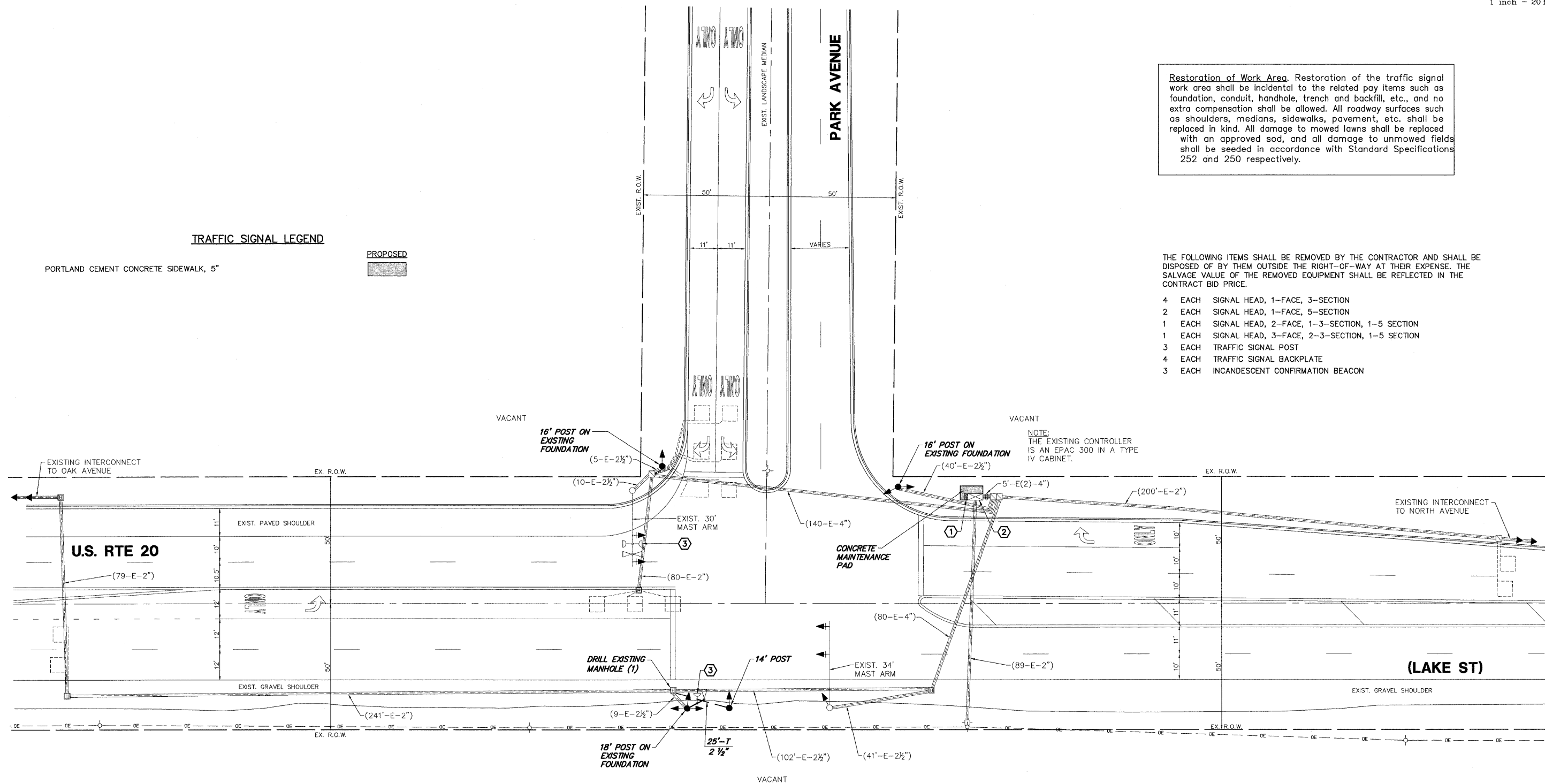
PORTLAND CEMENT CONCRETE SIDEWALK, 5"

PROPOSED



Restoration of Work Area. Restoration of the traffic signal work area shall be incidental to the related pay items such as foundation, conduit, handhole, trench and backfill, etc., and no extra compensation shall be allowed. All roadway surfaces such as shoulders, medians, sidewalks, pavement, etc. shall be replaced in kind. All damage to mowed lawns shall be replaced with an approved sod, and all damage to unmowed fields shall be seeded in accordance with Standard Specifications 252 and 250 respectively.

- THE FOLLOWING ITEMS SHALL BE REMOVED BY THE CONTRACTOR AND SHALL BE DISPOSED OF BY THEM OUTSIDE THE RIGHT-OF-WAY AT THEIR EXPENSE. THE SALVAGE VALUE OF THE REMOVED EQUIPMENT SHALL BE REFLECTED IN THE CONTRACT BID PRICE.
- 4 EACH SIGNAL HEAD, 1-FACE, 3-SECTION
 - 2 EACH SIGNAL HEAD, 1-FACE, 5-SECTION
 - 1 EACH SIGNAL HEAD, 2-FACE, 1-3-SECTION, 1-5 SECTION
 - 1 EACH SIGNAL HEAD, 3-FACE, 2-3-SECTION, 1-5 SECTION
 - 3 EACH TRAFFIC SIGNAL POST
 - 4 EACH TRAFFIC SIGNAL BACKPLATE
 - 3 EACH INCANDESCENT CONFIRMATION BEACON



THE TRAFFIC SIGNAL CONTROL EQUIPMENT FOR THIS PROJECT SHALL BE "NTCIP" COMPLIANT.

FILE NAME = 4085.866-TR1.dwg	USER NAME = ZACH WALLSTEN	DESIGNED - JRD	REVISED -	STATE OF ILLINOIS DEPARTMENT OF TRANSPORTATION	TRAFFIC SIGNAL MODERNIZATION PLAN U.S. RTE 20 (LAKE ST) AT PARK AVENUE			F&P RTE.	SECTION	COUNTY	TOTAL SHEETS	SHEET NO.
	PLOT SCALE = 1" = .08'	DRAWN - ZCW	REVISED -					VARIES	2010-005TS	COOK	32	23
PLOT DATE = 10/12/2010	CHECKED - KLB	REVISED -	REVISED -	SCALE: 1"=20'	SHEET NO.	OF	SHEETS	STA.	TO STA.	CONTRACT #:	60K23	ILLINOIS FED. AID PROJECT
	DATE - 10/12/2010	REVISED -	REVISED -									

GHA #4085.866