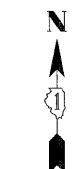
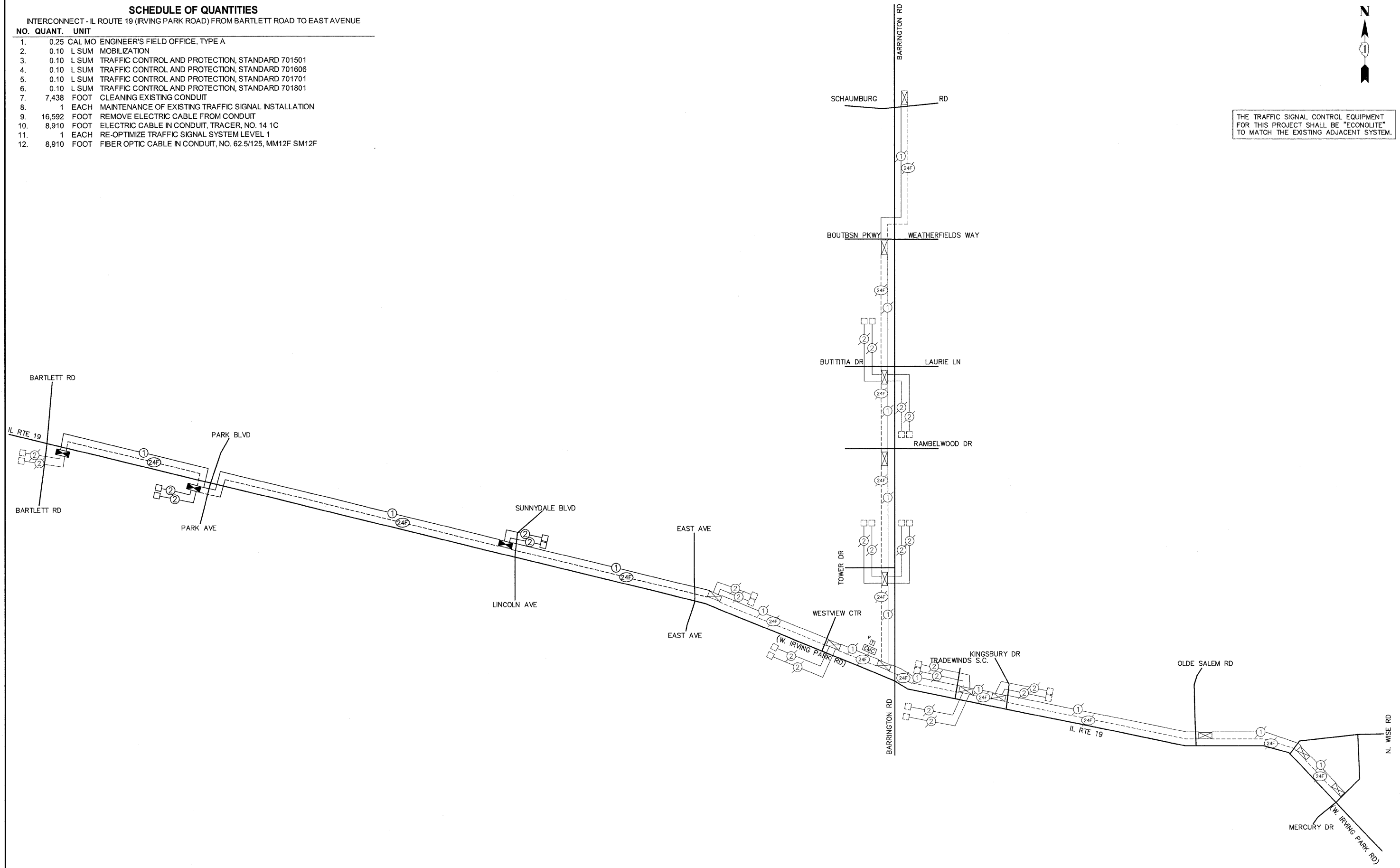


SCHEDULE OF QUANTITIES

INTERCONNECT - IL ROUTE 19 (IRVING PARK ROAD) FROM BARTLETT ROAD TO EAST AVENUE

NO.	QUANT.	UNIT
1.	0.25	CAL MO ENGINEER'S FIELD OFFICE, TYPE A
2.	0.10	L SUM MOBILIZATION
3.	0.10	L SUM TRAFFIC CONTROL AND PROTECTION, STANDARD 701501
4.	0.10	L SUM TRAFFIC CONTROL AND PROTECTION, STANDARD 701606
5.	0.10	L SUM TRAFFIC CONTROL AND PROTECTION, STANDARD 701701
6.	0.10	L SUM TRAFFIC CONTROL AND PROTECTION, STANDARD 701801
7.	7,438	FOOT CLEANING EXISTING CONDUIT
8.	1	EACH MAINTENANCE OF EXISTING TRAFFIC SIGNAL INSTALLATION
9.	16,592	FOOT REMOVE ELECTRIC CABLE FROM CONDUIT
10.	8,910	FOOT ELECTRIC CABLE IN CONDUIT, TRACER, NO. 14 1C
11.	1	EACH RE-OPTIMIZE TRAFFIC SIGNAL SYSTEM LEVEL 1
12.	8,910	FOOT FIBER OPTIC CABLE IN CONDUIT, NO. 62.5/125, MM12F SM12F

THE TRAFFIC SIGNAL CONTROL EQUIPMENT FOR THIS PROJECT SHALL BE "ECONOLITE" TO MATCH THE EXISTING ADJACENT SYSTEM.



FILE NAME = 4085.862-866-INTERCONNECT.dwg	USER NAME = ZACH WALLSTEN	DESIGNED - JRD	REVISED -	STATE OF ILLINOIS DEPARTMENT OF TRANSPORTATION	SCHEDULE OF QUANTITIES & INTERCONNECT SCHEMATIC IL ROUTE 19 (IRVING PARK ROAD) & BARRINGTON ROAD	FAP RTE.	SECTION	COUNTY	TOTAL SHEETS	SHEET NO.
PLOT SCALE = 1" = .0833'	CHECKED - KLB	REVISED -	VARIES			2010-005TS	COOK	32	28	
PLOT DATE = 10/12/2010	DATE - 10/12/2010	REVISED -					CONTRACT #:	60K23		
						ILLINOIS FED. AID PROJECT				

GHA #4085.862-866

SCALE: N.A. SHEET NO. OF SHEETS STA. TO STA.