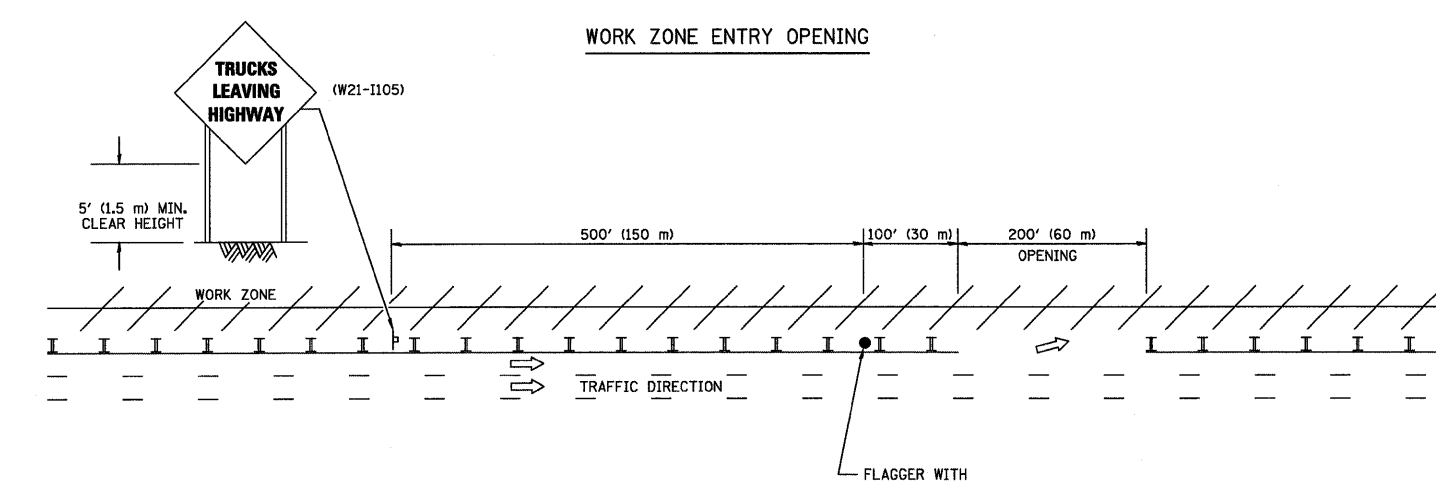
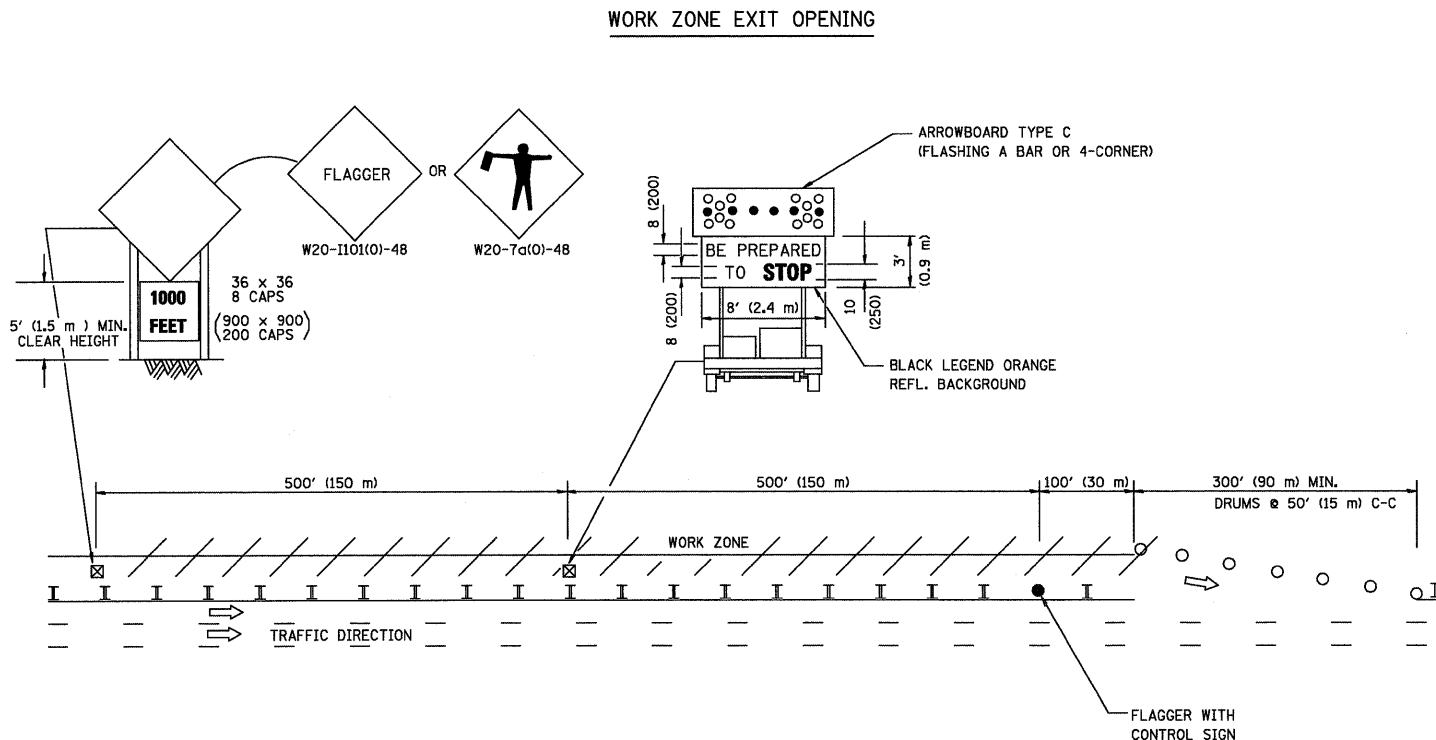


**SIGNING FOR FLAGGING OPERATIONS AT WORK ZONE OPENING**

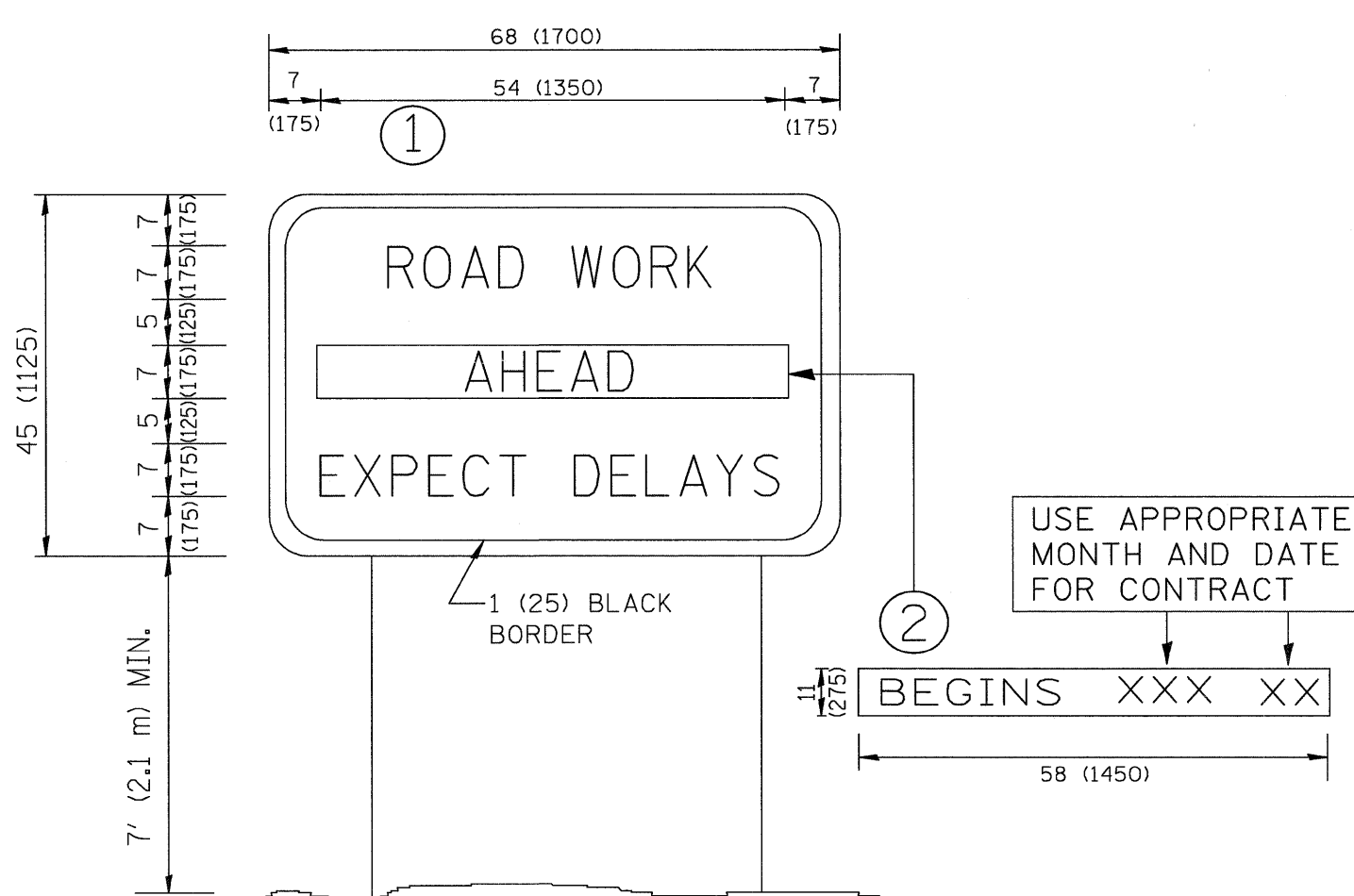


- NOTES:**
1. THE ARROWBOARD, THE FLAGGER AHEAD SIGN AND THE TRUCKS LEAVING HIGHWAY SIGN SHALL BE REMOVED OR TURNED AWAY FROM TRAFFIC AND THE EXIT AND ENTRY OPENINGS SHALL BE CLOSED WHEN THE FLAGGING OPERATION CEASES. NON OPERATING EQUIPMENT SHALL COMPLY WITH ARTICLE 701.11
  2. WORK ZONE EXIT OPENINGS SHOULD BE A MINIMUM OF ONE HALF MILE APART.
  3. EXITING THE WORK ZONE AT ANY PLACE OTHER THAN AT A WORK ZONE EXIT OPENING WILL BE PROHIBITED.
  4. ALL VEHICLES SHALL ENTER THE WORK ZONE AT ENTRY OPENINGS, USING THEIR TURN SIGNALS TO WARN MOTORISTS

TC-18, LATEST REVISION DATE: 12-09

ALL DIMENSIONS ARE IN INCHES (MILLIMETERS) UNLESS OTHERWISE SHOWN

**ARTERIAL ROAD INFORMATIONAL SIGN**



**NOTES:**

1. USE BLACK LETTERING ON ORANGE BACKGROUND.
2. ERECT SIGNS IN ADVANCE OF THE LOCATION FOR THE "ROAD CONSTRUCTION AHEAD" SIGN AT LOCATIONS AS DIRECTED BY THE ENGINEER.
3. ERECT SIGN ① WITH INSTALLED PANEL ② ONE WEEK PRIOR TO THE START OF CONSTRUCTION.
4. REMOVE PANEL ② SOON AFTER THE START OF CONSTRUCTION.
5. SEE SPECIAL PROVISION FOR "TEMPORARY INFORMATION SIGNING" FOR ADDITIONAL INFORMATION.
6. ONE SIGN ASSEMBLY EQUALS 25.70 SQ. FT. (2.3 SQ. M.)
7. SHALL BE PAID FOR AS TEMPORARY INFORMATION SIGNING.

ALL DIMENSIONS ARE IN INCHES (MILLIMETERS) UNLESS OTHERWISE SHOWN.

TC-22, LATEST REVISION DATE: 01-31-07

FILE NAME = 4085.862-866-DT1.dwg	USER NAME = ZACH WALLSTEN	DESIGNED - JRD	REVISIONS -	<b>STATE OF ILLINOIS DEPARTMENT OF TRANSPORTATION</b>	<b>DISTRICT 1 STANDARD DETAILS</b>			FAP. RTE. VARIES	SECTION 2010-005TS	COUNTY COOK	TOTAL SHEETS 32	SHEET NO. 32
	PLOT SCALE = 1" = .0833'	DRAWN - ZCW	REVISIONS -		SCALE N.A.	SHEET NO. OF SHEETS	STA. TO STA.	<b>TC-18 &amp; TC-22</b>		CONTRACT # 60K23	ILLINOIS FED. AID PROJECT	
	PLOT DATE = 10/12/2010	CHECKED - KLB	REVISIONS -									
		DATE - 10/12/2010	REVISIONS -									