

GROUND COORDINATES FOR IL ROUTE 71

DESCRIPTION	COORDINATE	
	NORTHING	EASTING
PT STA 825+08.74	1,678,272.14	781,990.54
PC STA 828+61.69	1,678,599.56	782,122.34
PI STA 833+55.42	1,679,057.57	782,306.71
PT STA 838+37.35	1,679,551.29	782,308.96

GROUND COORDINATES FOR N. 2409 STREET

DESCRIPTION	COORDINATE	
	NORTHING	EASTING
POT STA 7+96.38	1,681,265.65	782,113.17
POT STA 10+00.00	1,681,262.43	782,316.76

GROUND COORDINATES DEERFIELD STREET

DESCRIPTION	COORDINATE	
	NORTHING	EASTING
POT STA 1+00.00	1,682,519.78	782,322.50
POT STA 2+58.47	1,682,514.52	782,480.88

GROUND COORDINATES FOR MAYERS AVE.

DESCRIPTION	COORDINATE	
	NORTHING	EASTING
POT STA 8+52.13	1,683,571.01	782,179.44
POT STA 10+00.00	1,683,568.02	782,327.27

F.A.P. RTE.	SECTION	COUNTY	TOTAL SHEETS	SHEET NO.
619	70 RS-5 & I	LASALLE	214	26
STA. 820+00.00 TO STA. 884+00.00				
FED. ROAD DIST. NO. 3 ILLINOIS			FED. AID PROJECT	



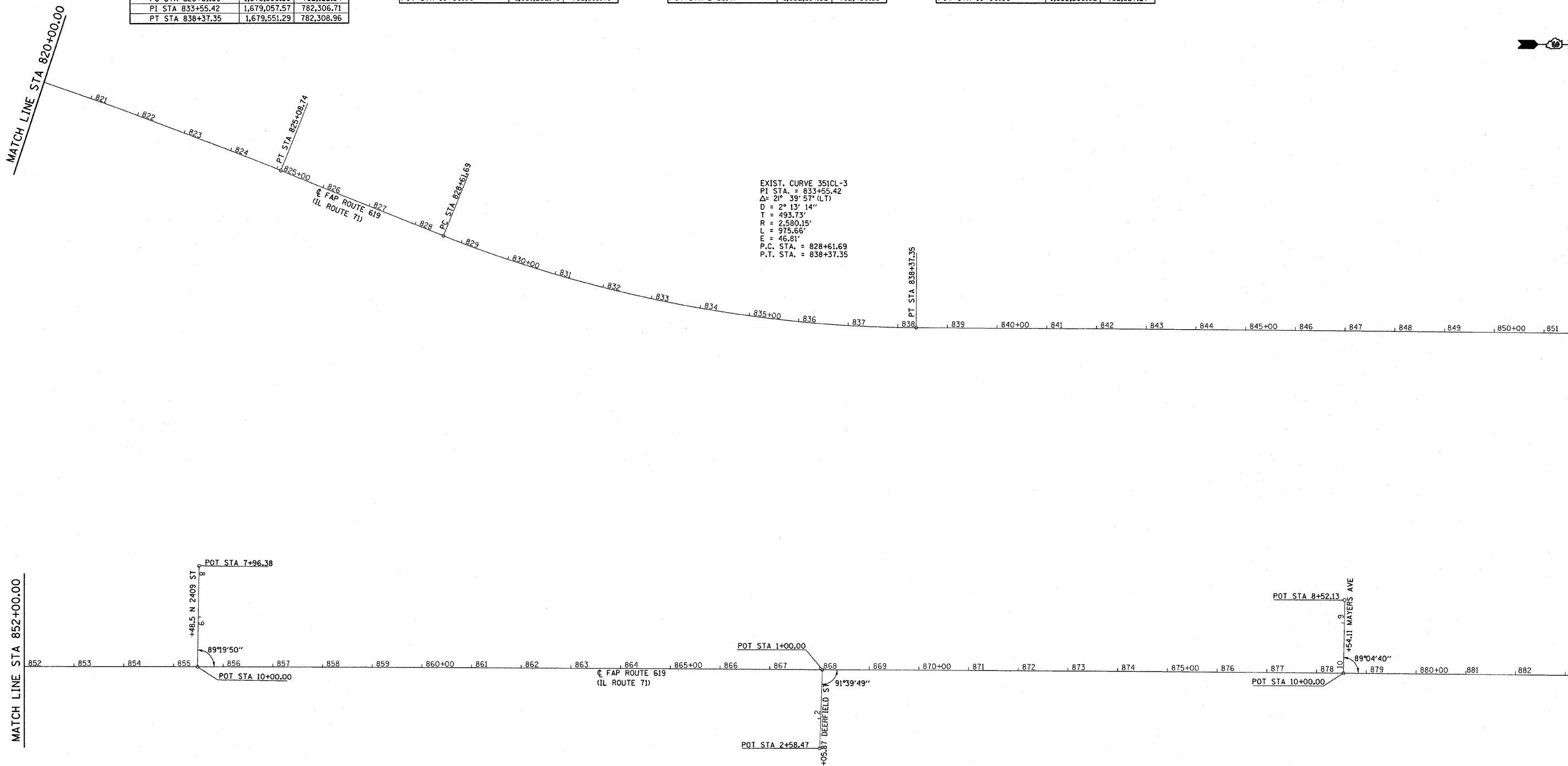
MATCH LINE STA 820+00.00

MATCH LINE STA 852+00.00

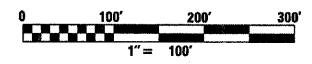
MATCH LINE STA 852+00.00

MATCH LINE STA 884+00.00

EXIST. CURVE 351CL-3  
 PI STA = 833+55.42  
 $\Delta = 2^\circ 39' 57''$  (LT)  
 $D = 2^\circ 13' 14''$   
 $T = 493.73'$   
 $R = 2,580.15'$   
 $L = 975.66'$   
 $E = 46.81'$   
 P.C. STA = 828+61.69  
 P.T. STA = 838+37.35



REVISIONS	
NAME	DATE



ILLINOIS DEPARTMENT OF TRANSPORTATION  
**HORIZONTAL CONTROL AND ALIGNMENT TIES**  
 FAP ROUTE 619 (IL ROUTE 71 /351)  
 SECTION NO. 70 RS-5 & I  
 LASALLE COUNTY  
 SCALE: VERT. \_\_\_\_\_  
 HORIZ. \_\_\_\_\_  
 DATE \_\_\_\_\_  
 DRAWN BY BANDY  
 CHECKED BY STEUART