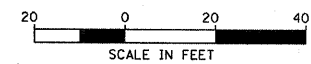
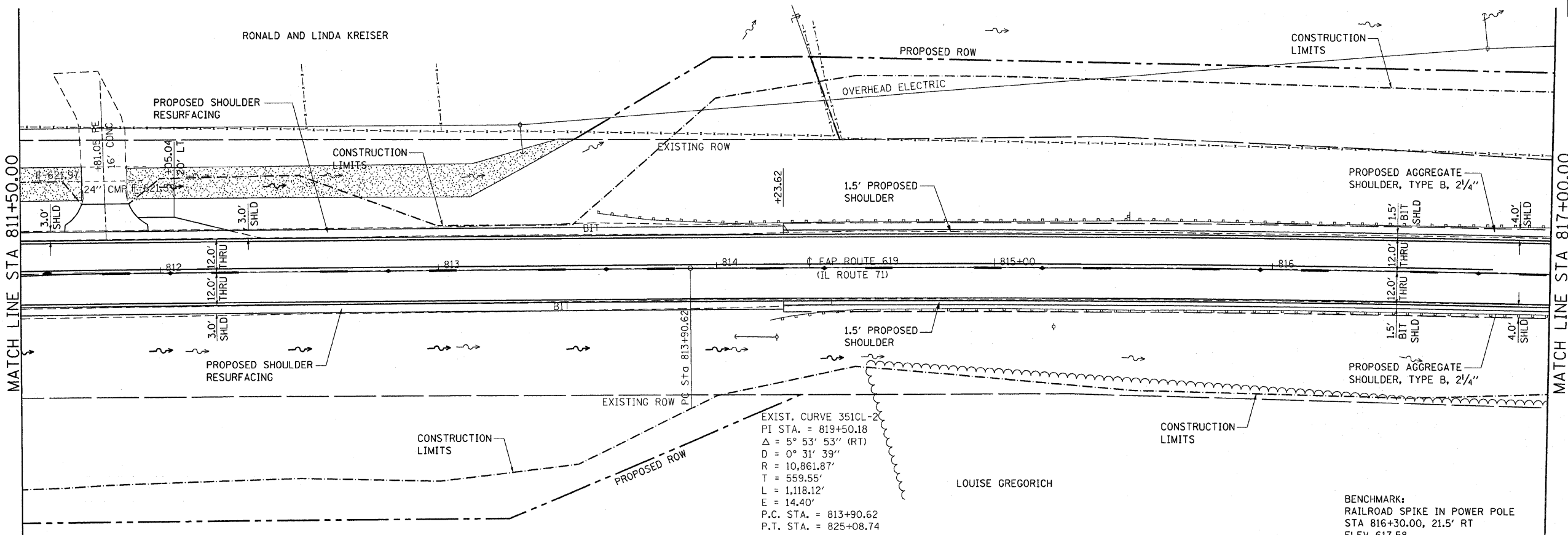


F.A.P. RTE.	SECTION	COUNTY	TOTAL SHEETS	SHEET NO.
619	70 RS-5 & I	LASALLE	214	22
STA. 811+50.00		TO STA. 817+00.00		
FED. ROAD DIST. NO. 3		ILLINOIS	FED. AID PROJECT	

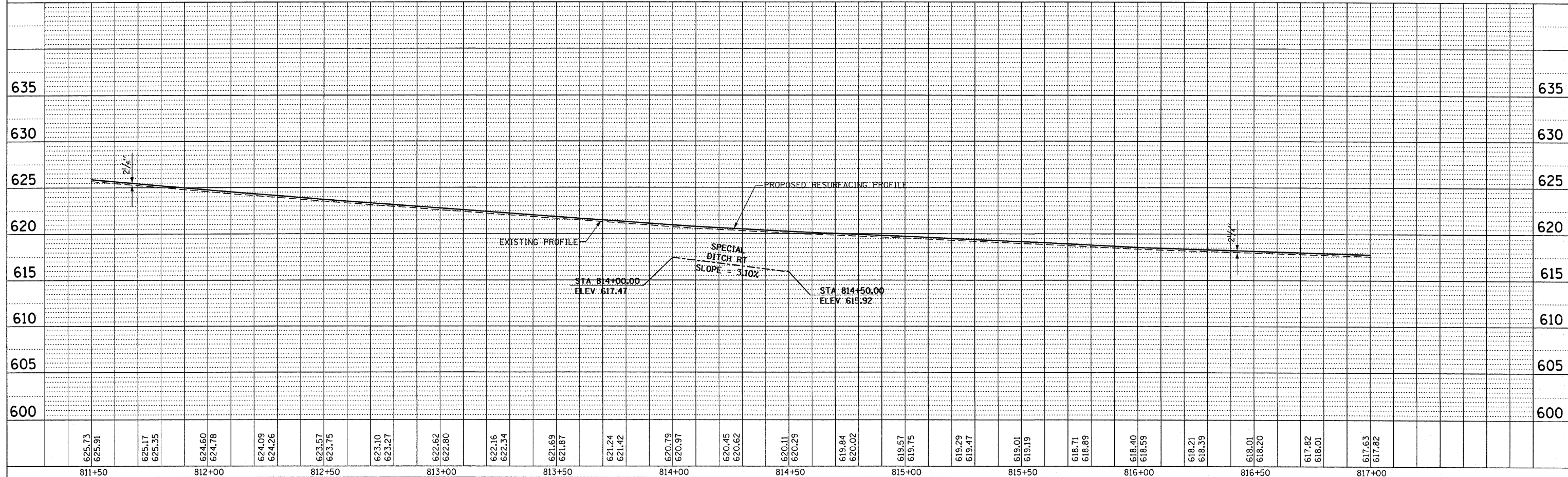
DATE	BY

PLAN	REVISION	DATE	BY



DATE	BY

PROFILE	REVISION	DATE	BY



PLAN & PROFILE, FAP ROUTE 619 (IL 71) STA. 811+50.00 TO STA. 817+00.00