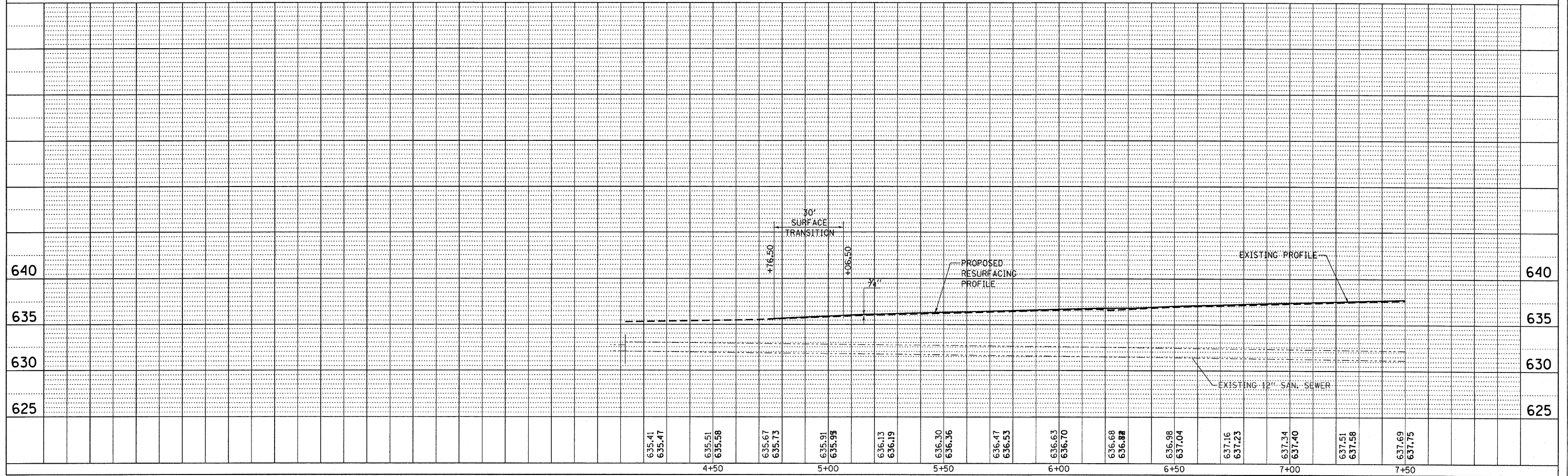
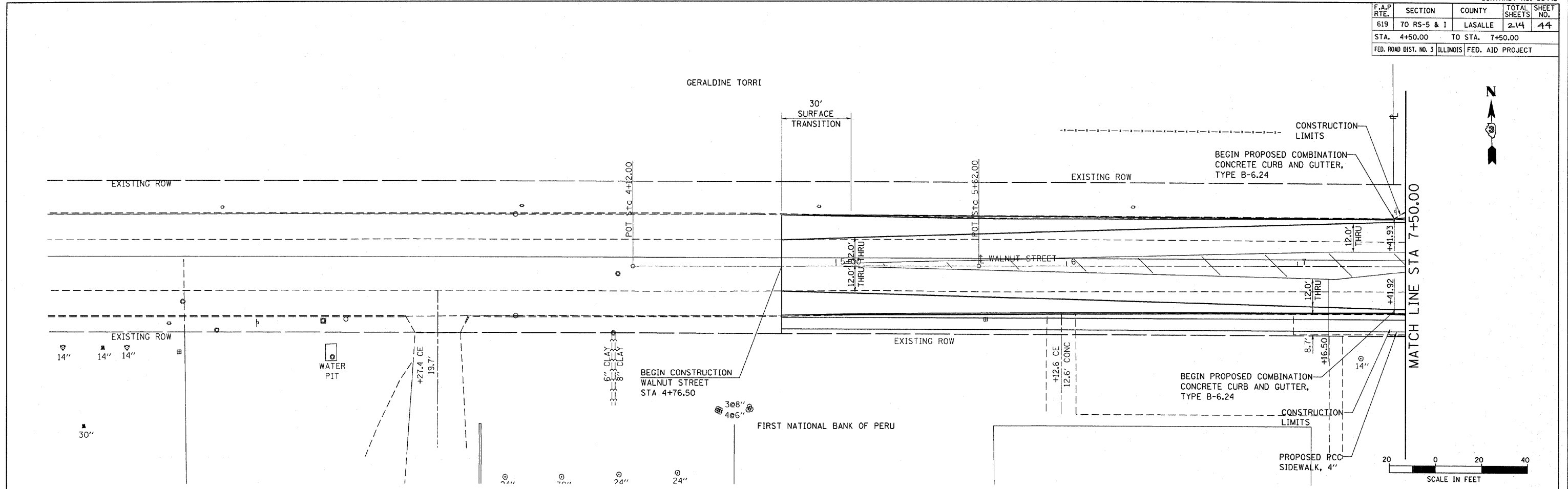


F.A.P. RTE.	SECTION	COUNTY	TOTAL SHEETS	SHEET NO.
619	70 RS-5 & I	LASALLE	214	44
STA. 4+50.00		TO STA. 7+50.00		
FED. ROAD DIST. NO. 3		ILLINOIS		FED. AID PROJECT

PLAN	DATE
SUBMITTED	
ALIGNED	
CHECKED	
PLOTTED	
NOTE BOOK NO.	
DATE FILED	

PROFILE	DATE
SUBMITTED	
ALIGNED	
CHECKED	
PLOTTED	
NOTE BOOK NO.	
DATE FILED	



PLAN & PROFILE, STA. 4+50.00 TO STA. 7+50.00, WALNUT STREET, FAP ROUTE 619 (IL 71)