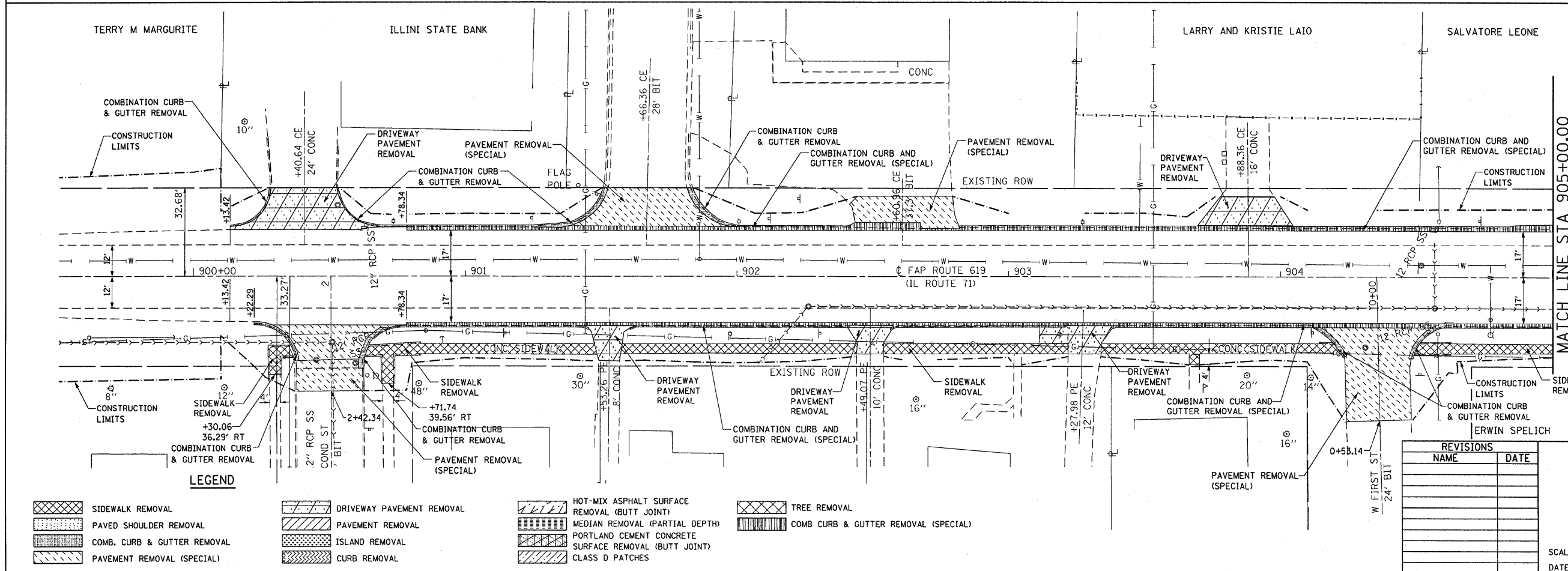


F.A.P. RTE.	SECTION	COUNTY	TOTAL SHEETS	SHEET NO.
619	70 RS-5 & I	LASALLE	214	57
STA. 894+00.00		TO STA. 905+00.00		
FED. ROAD DIST. NO. 3		ILLINOIS FED. AID PROJECT		



LEGEND

	SIDEWALK REMOVAL		DRIVEWAY PAVEMENT REMOVAL		HOT-MIX ASPHALT SURFACE REMOVAL (BUTT JOINT)		TREE REMOVAL
	PAVED SHOULDER REMOVAL		PAVEMENT REMOVAL		MEDIAN REMOVAL (PARTIAL DEPTH)		COMB CURB & GUTTER REMOVAL (SPECIAL)
	COMB. CURB & GUTTER REMOVAL		ISLAND REMOVAL		PORTLAND CEMENT CONCRETE SURFACE REMOVAL (BUTT JOINT)		
	PAVEMENT REMOVAL (SPECIAL)		CURB REMOVAL		CLASS D PATCHES		

REVISIONS

NAME	DATE

ILLINOIS DEPARTMENT OF TRANSPORTATION
REMOVAL ITEMS
 FAP ROUTE 619 (IL ROUTE 71 /351)
 SECTION NO. 70 RS-5 & I
 LASALLE COUNTY

SCALE: VERT. _____
 HORIZ. _____
 DATE _____

DRAWN BY BANDY
 CHECKED BY STEUART

REMOVAL ITEMS, FAP ROUTE 619 (IL 71) STA. 899+50.00 TO STA. 905+00.00