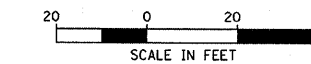
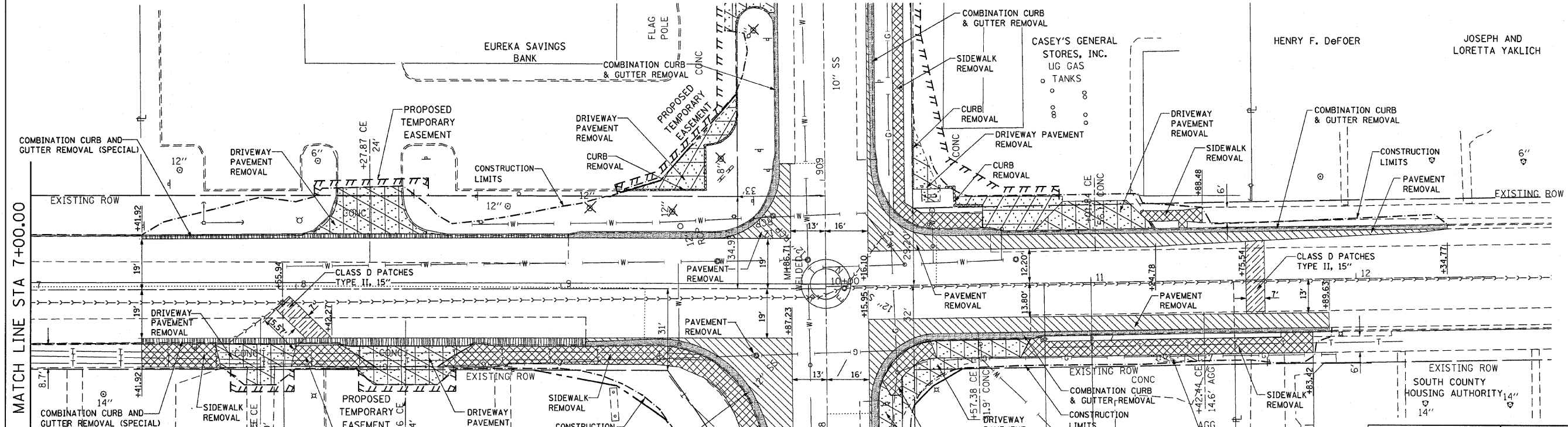
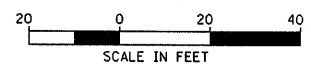
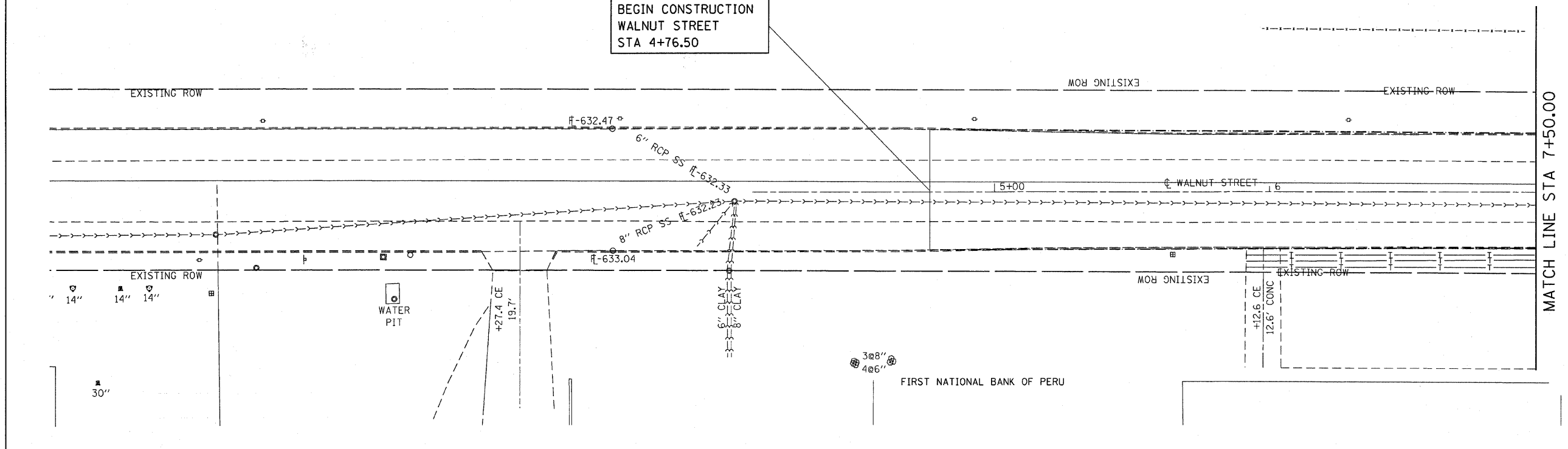


F.A.P. RTE.	SECTION	COUNTY	TOTAL SHEETS	SHEET NO.
619	70 RS-5 & I	LASALLE	214	60
STA. 2+00.00 TO STA. 13+00.00				
FED. ROAD DIST. NO. 3 ILLINOIS FED. AID PROJECT				

GERALDINE TORRI

BEGIN CONSTRUCTION  
WALNUT STREET  
STA 4+76.50



MATCH LINE STA 7+00.00

MATCH LINE STA 7+50.00

**LEGEND**

	SIDEWALK REMOVAL		DRIVEWAY PAVEMENT REMOVAL		HOT-MIX ASPHALT SURFACE REMOVAL (BUTT JOINT)		TREE REMOVAL
	PAVED SHOULDER REMOVAL		PAVEMENT REMOVAL		MEDIAN REMOVAL (PARTIAL DEPTH)		COMB CURB & GUTTER REMOVAL (SPECIAL)
	COMB. CURB & GUTTER REMOVAL		ISLAND REMOVAL		PORTLAND CEMENT CONCRETE SURFACE REMOVAL (BUTT JOINT)		CONTAMINATED REMOVAL AREA, GREATER THAN 6' DEPTH
	PAVEMENT REMOVAL (SPECIAL)		CURB REMOVAL		CLASS D PATCHES		CONTAMINATED REMOVAL AREA, GREATER THAN 2' DEPTH

REVISIONS	
NAME	DATE

ILLINOIS DEPARTMENT OF TRANSPORTATION  
**REMOVAL ITEMS**  
FAP ROUTE 619 (IL ROUTE 71 /351)  
SECTION NO. 70 RS-5 & I  
LASALLE COUNTY

SCALE: VERT. DATE  
HORIZ. DATE

DRAWN BY BANDY  
CHECKED BY STEUART

JOHN AND KRISTINA DITTLE  
JOHN AND DIANE PINI