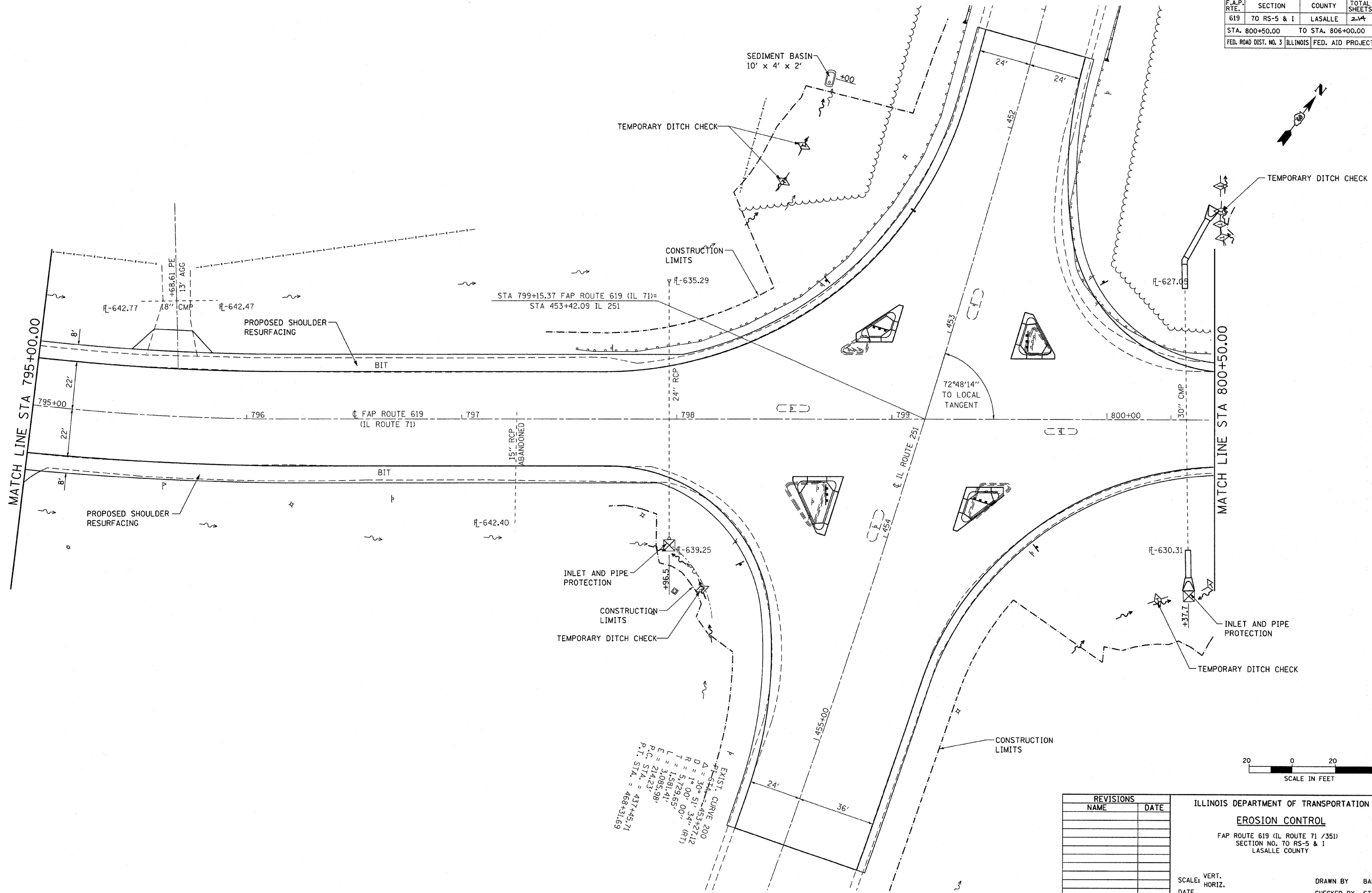
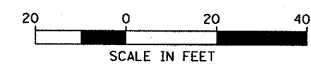


F.A.P. RTE.	SECTION	COUNTY	TOTAL SHEETS	SHEET NO.
619	70 RS-5 & I	LASALLE	214	62
STA. 800+50.00 TO STA. 806+00.00				
FED. ROAD DIST. NO. 3 ILLINOIS			FED. AID PROJECT	



EXIST. CURVE 200
 STA. 453+27.12
 Δ = 30° 51' 34" (RT)
 R = 1° 00' 00"
 T = 5.729.65'
 L = 1581.41'
 E = 3085.98'
 P.C. STA. = 214.23
 P.T. STA. = 437+45.71
 468+31.69



REVISIONS	
NAME	DATE

ILLINOIS DEPARTMENT OF TRANSPORTATION
EROSION CONTROL
 FAP ROUTE 619 (IL ROUTE 71 / 351)
 SECTION NO. 70 RS-5 & I
 LASALLE COUNTY

SCALE: VERT. _____
 HORIZ. _____
 DATE _____

DRAWN BY BANDY
 CHECKED BY STEUART