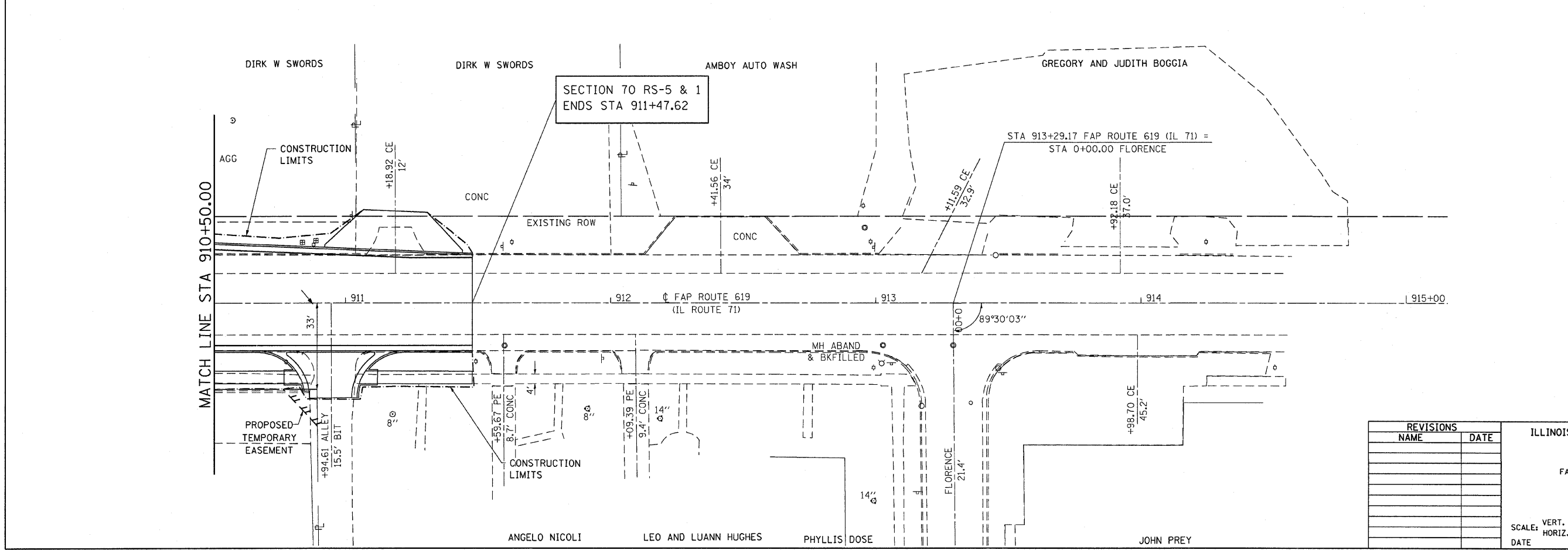
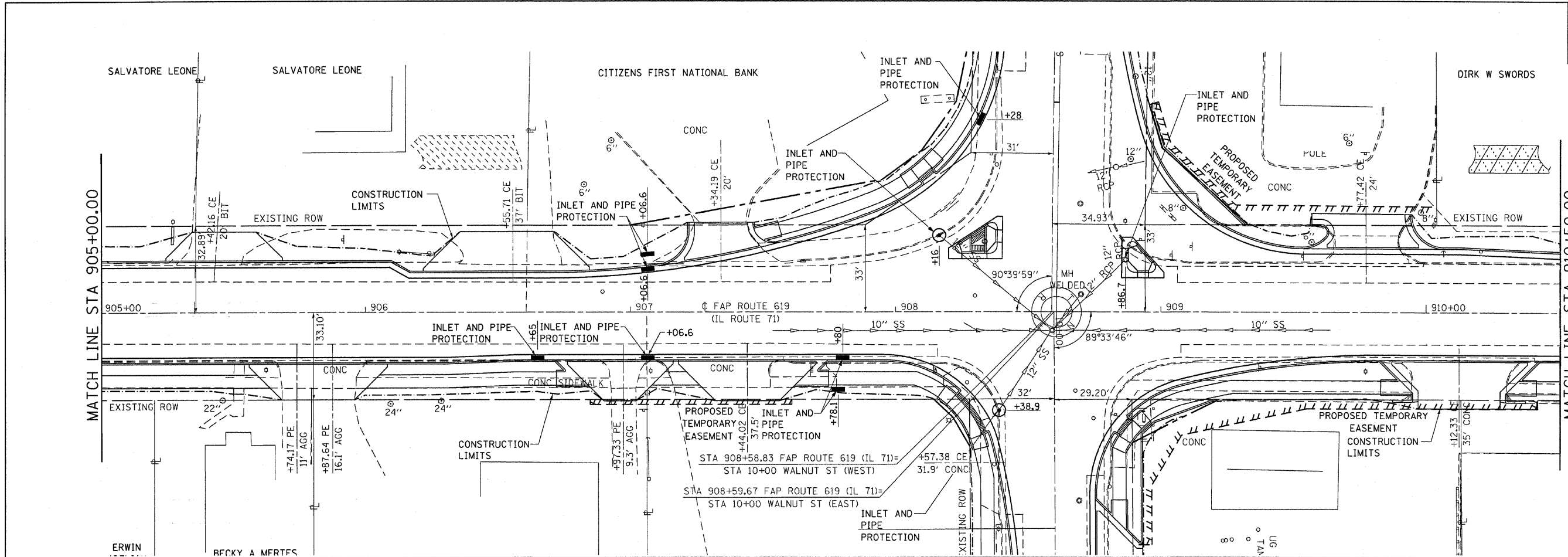


F.A.P. RTE.	SECTION	COUNTY	TOTAL SHEETS	SHEET NO.
619	70 RS-5 & 1	LASALLE	214	70
STA. 905+00.00 TO STA. 915+15.12				
FED. ROAD DIST. NO. 3 ILLINOIS FED. AID PROJECT				



REVISIONS	
NAME	DATE

ILLINOIS DEPARTMENT OF TRANSPORTATION  
**EROSION CONTROL**  
 FAP ROUTE 619 (IL ROUTE 71 / 351)  
 SECTION NO. 70 RS-5 & 1  
 LASALLE COUNTY

SCALE: VERT. \_\_\_\_\_  
 HORIZ. \_\_\_\_\_  
 DATE \_\_\_\_\_

DRAWN BY BANDY  
 CHECKED BY STEUART