

F.A.P. RTE.	SECTION	COUNTY	TOTAL SHEETS	SHEET NO.
619	70 RS-5 & I	LASALLE	214	85
STA. TO STA.		FED. ROAD DIST. NO. 3 ILLINOIS FED. AID PROJECT		

SOUTHWEST QUADRANT					
POINT	ELEVATION	NORTHING	EASTING	ROADWAY STATION	ROADWAY OFFSET
IL 71					
152	647.26	1,675,943.18	780,733.70	797+66.05	-21.98
153	647.21	1,675,950.88	780,743.49	797+78.50	-22.42
154	647.22	1,675,957.56	780,750.94	797+88.45	-23.42
155	647.21	1,675,964.65	780,757.99	797+98.34	-24.98
156	647.18	1,675,972.13	780,764.63	798+08.11	-27.11
157	647.12	1,675,979.98	780,770.83	798+17.75	-29.79
158	647.05	1,675,988.17	780,776.57	798+27.22	-33.02
159	646.98	1,675,996.68	780,781.84	798+36.49	-36.78
160	646.93	1,676,005.48	780,786.61	798+45.53	-41.07
161	646.88	1,676,014.53	780,790.87	798+54.31	-45.86
162	646.82	1,676,023.81	780,794.60	798+62.80	-51.15
163	646.80	1,676,033.29	780,797.80	798+70.97	-56.92
IL 251					
164	646.76	1,676,042.93	780,800.45	452+92.11	53.38
165	646.72	1,676,052.71	780,802.55	452+83.52	48.14
166	646.70	1,676,062.60	780,804.08	452+74.65	43.38
167	646.68	1,676,072.55	780,805.05	452+65.53	39.12
168	646.65	1,676,082.55	780,805.45	452+56.20	35.37
169	646.60	1,676,092.55	780,805.27	452+46.68	32.13
170	646.54	1,676,102.52	780,804.53	452+37.00	29.43
171	646.49	1,676,112.43	780,803.17	452+27.18	27.31
172	646.38	1,676,122.25	780,801.29	452+17.27	25.69
173	646.25	1,676,131.96	780,798.90	452+07.28	24.57
174	646.14	1,676,141.49	780,795.88	451+97.25	24.08
175	646.04	1,676,150.89	780,792.46	451+87.21	24.00
176	645.94	1,676,160.25	780,788.95	451+77.17	24.00
177	645.85	1,676,169.61	780,785.42	451+67.13	24.00
178	645.78	1,676,176.92	780,782.65	451+59.28	24.00

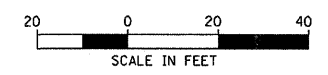
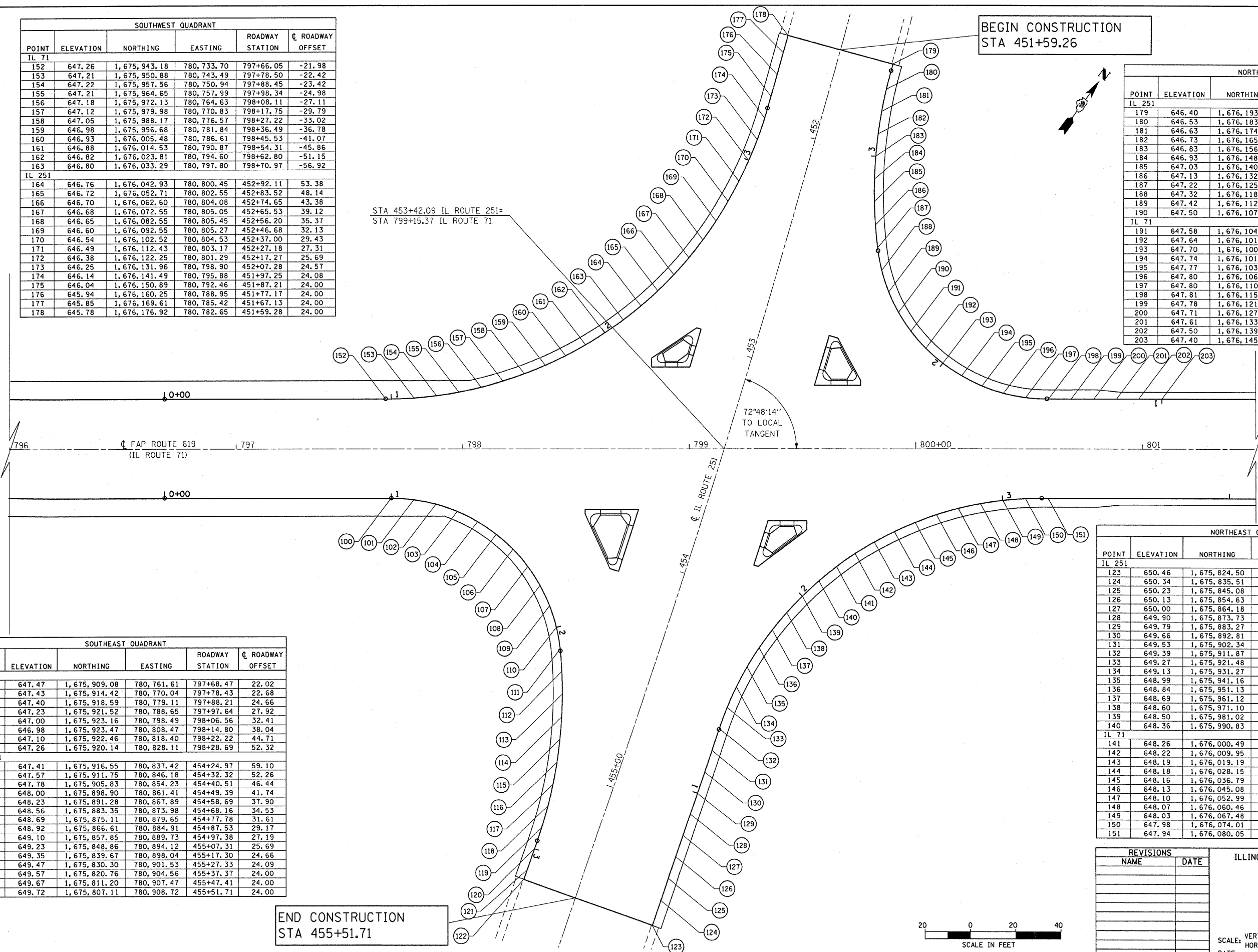
NORTHWEST QUADRANT					
POINT	ELEVATION	NORTHING	EASTING	ROADWAY STATION	ROADWAY OFFSET
IL 251					
179	646.40	1,676,193.98	780,827.50	451+59.24	-23.98
180	646.53	1,676,183.42	780,831.71	451+70.56	-24.18
181	646.63	1,676,174.33	780,835.87	451+80.49	-24.87
182	646.73	1,676,165.46	780,840.47	451+90.37	-26.07
183	646.83	1,676,156.83	780,845.53	452+00.17	-27.8
184	646.93	1,676,148.46	780,851.00	452+09.87	-30.02
185	647.03	1,676,140.38	780,856.89	452+19.44	-32.75
186	647.13	1,676,132.60	780,863.16	452+28.85	-35.96
187	647.22	1,676,125.14	780,869.83	452+38.08	-39.67
188	647.32	1,676,118.27	780,877.09	452+46.95	-44.15
189	647.42	1,676,112.38	780,885.16	452+55.17	-49.74
190	647.50	1,676,107.63	780,893.96	452+62.54	-56.42
IL 71					
191	647.58	1,676,104.10	780,903.32	799+97.95	-51.85
192	647.64	1,676,101.85	780,913.06	800+04.49	-44.28
193	647.70	1,676,100.91	780,923.02	800+11.98	-37.65
194	647.74	1,676,101.30	780,933.02	800+20.28	-32.07
195	647.77	1,676,103.03	780,942.88	800+29.25	-27.65
196	647.80	1,676,106.05	780,952.42	800+38.74	-24.46
197	647.80	1,676,110.31	780,961.47	800+48.56	-22.56
198	647.81	1,676,115.74	780,969.87	800+58.55	-21.98
199	647.78	1,676,121.64	780,977.95	800+68.55	-21.98
200	647.71	1,676,127.53	780,986.02	800+78.55	-21.98
201	647.61	1,676,133.43	780,994.10	800+88.55	-21.98
202	647.50	1,676,139.33	781,002.17	800+98.55	-21.98
203	647.40	1,676,145.23	781,010.25	801+08.55	-21.98

SOUTHEAST QUADRANT					
POINT	ELEVATION	NORTHING	EASTING	ROADWAY STATION	ROADWAY OFFSET
IL 71					
100	647.47	1,675,909.08	780,761.61	797+68.47	22.02
101	647.43	1,675,914.42	780,770.04	797+78.43	22.68
102	647.40	1,675,918.59	780,779.11	797+88.21	24.66
103	647.23	1,675,921.52	780,788.65	797+97.64	27.92
104	647.00	1,675,923.16	780,798.49	798+06.56	32.41
105	646.98	1,675,923.47	780,808.47	798+14.80	38.04
106	647.10	1,675,922.46	780,818.40	798+22.22	44.71
107	647.26	1,675,920.14	780,828.11	798+28.69	52.32
IL 251					
108	647.41	1,675,916.55	780,837.42	454+24.97	59.10
109	647.57	1,675,911.75	780,846.18	454+32.32	52.26
110	647.78	1,675,905.83	780,854.23	454+40.51	46.44
111	648.00	1,675,898.90	780,861.41	454+49.39	41.74
112	648.23	1,675,891.28	780,867.89	454+58.69	37.90
113	648.56	1,675,883.35	780,873.98	454+68.16	34.53
114	648.69	1,675,875.11	780,879.65	454+77.78	31.61
115	648.92	1,675,866.61	780,884.91	454+87.53	29.17
116	649.10	1,675,857.85	780,889.73	454+97.38	27.19
117	649.23	1,675,848.86	780,894.12	455+07.31	25.69
118	649.35	1,675,839.67	780,898.04	455+17.30	24.66
119	649.47	1,675,830.30	780,901.53	455+27.33	24.09
120	649.57	1,675,820.76	780,904.56	455+37.37	24.00
121	649.67	1,675,811.20	780,907.47	455+47.41	24.00
122	649.72	1,675,807.11	780,908.72	455+51.71	24.00

NORTHEAST QUADRANT					
POINT	ELEVATION	NORTHING	EASTING	ROADWAY STATION	ROADWAY OFFSET
IL 251					
123	650.46	1,675,824.50	780,966.14	455+51.72	-36.00
124	650.34	1,675,835.51	780,962.79	455+40.28	-36.00
125	650.23	1,675,845.08	780,959.86	455+30.34	-36.00
126	650.13	1,675,854.63	780,956.92	455+20.40	-36.00
127	650.00	1,675,864.18	780,953.96	455+10.46	-36.00
128	649.90	1,675,873.73	780,950.98	455+00.53	-36.00
129	649.79	1,675,883.27	780,947.99	454+90.59	-36.00
130	649.66	1,675,892.81	780,944.97	454+80.65	-36.00
131	649.53	1,675,902.34	780,941.95	454+70.71	-36.00
132	649.39	1,675,911.87	780,938.90	454+60.77	-36.00
133	649.27	1,675,921.48	780,936.16	454+50.85	-36.33
134	649.13	1,675,931.27	780,934.13	454+40.97	-37.42
135	648.99	1,675,941.16	780,932.73	454+31.19	-39.14
136	648.84	1,675,951.13	780,931.99	454+21.56	-41.53
137	648.69	1,675,961.12	780,931.91	454+12.11	-44.58
138	648.60	1,675,971.10	780,932.50	454+02.90	-48.27
139	648.50	1,675,981.02	780,933.75	453+93.96	-52.59
140	648.36	1,675,990.83	780,935.66	453+85.35	-57.51
IL 71					
141	648.26	1,676,000.49	780,938.21	799+65.00	52.40
142	648.22	1,676,009.95	780,941.41	799+73.16	46.64
143	648.19	1,676,019.19	780,945.23	799+81.69	41.44
144	648.18	1,676,028.15	780,949.65	799+90.55	36.81
145	648.16	1,676,036.79	780,954.66	799+99.69	32.79
146	648.13	1,676,045.08	780,960.24	800+09.09	29.38
147	648.10	1,676,052.99	780,966.35	800+18.69	26.61
148	648.07	1,676,060.46	780,972.98	800+28.45	24.48
149	648.03	1,676,067.48	780,980.09	800+38.33	23.01
150	647.98	1,676,074.01	780,987.65	800+48.29	22.19
151	647.94	1,676,080.05	780,995.61	800+58.28	22.02

END CONSTRUCTION
STA 455+51.71

BEGIN CONSTRUCTION
STA 451+59.26



REVISIONS	
NAME	DATE

ILLINOIS DEPARTMENT OF TRANSPORTATION
PAVEMENT ELEVATIONS
 FAP ROUTE 619 (IL ROUTE 71 /351)
 SECTION NO. 70 RS-5 & I
 LASALLE COUNTY
 SCALE: VERT. _____
 HORIZ. _____
 DATE _____
 DRAWN BY BANDY
 CHECKED BY STEUART