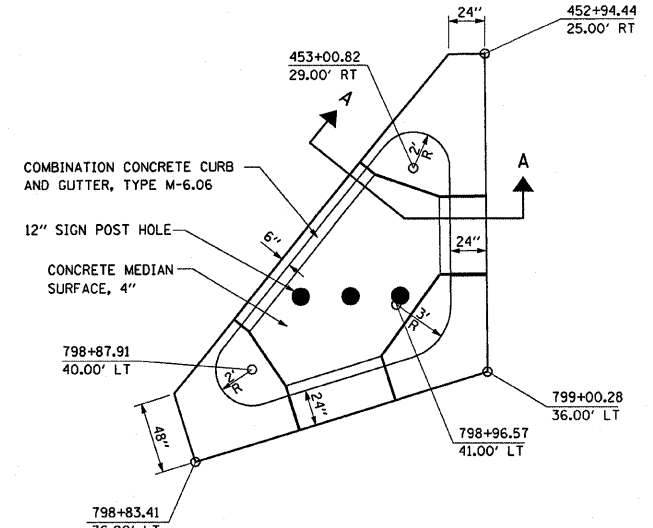
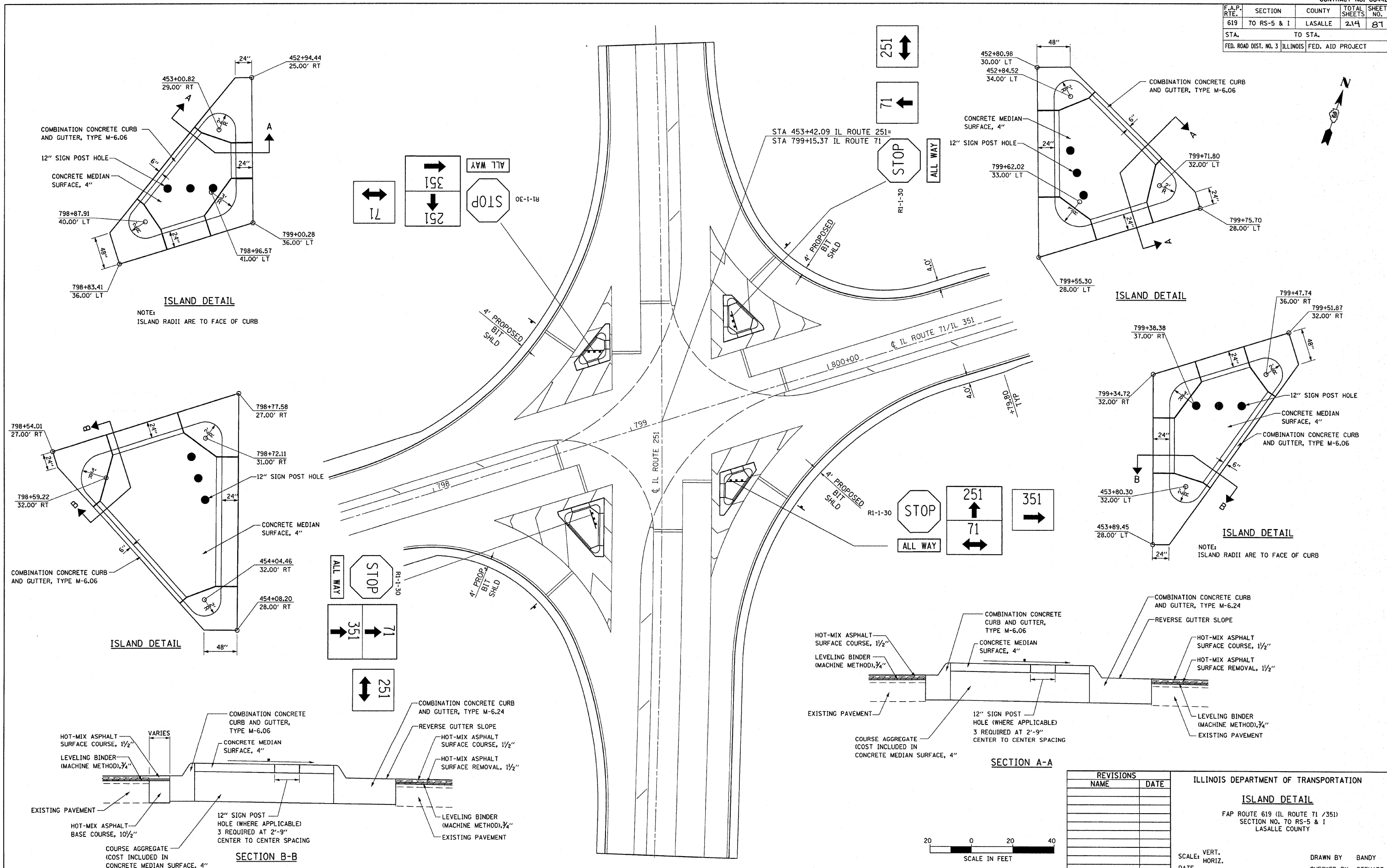
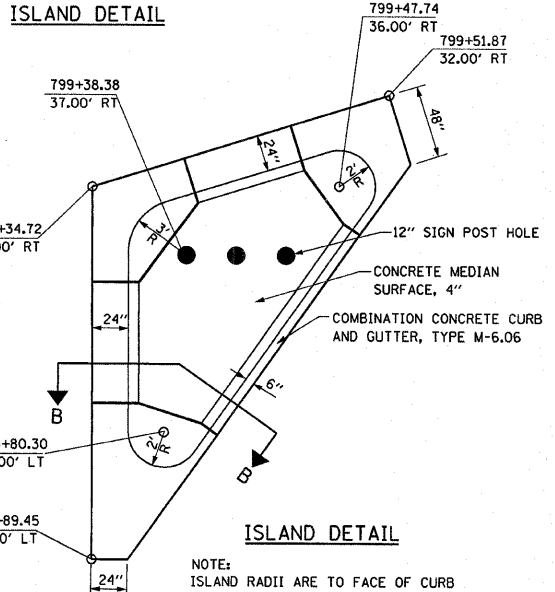
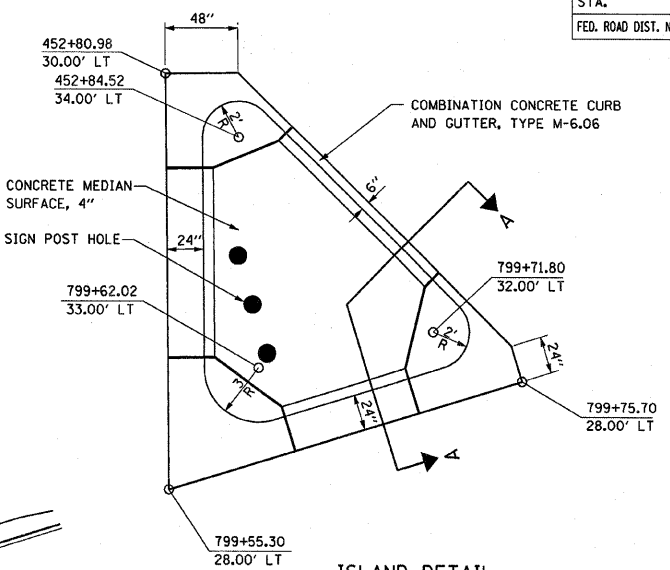


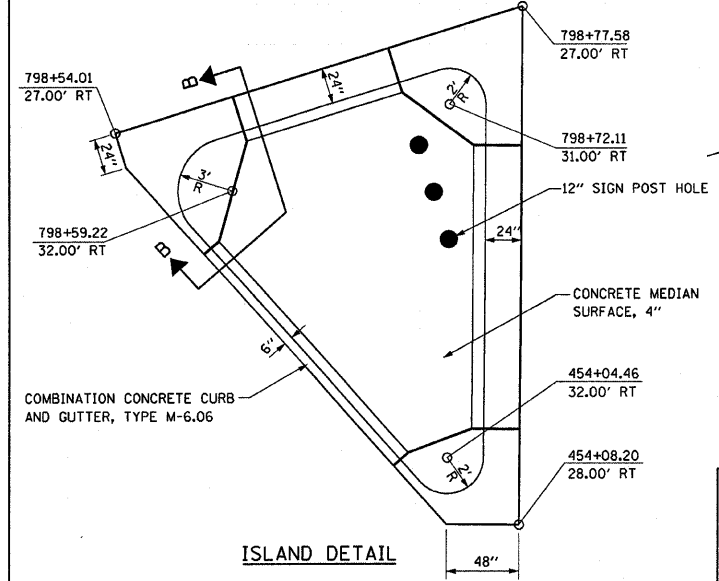
F.A.P. RTE.	SECTION	COUNTY	TOTAL SHEETS	SHEET NO.
619	70 RS-5 & I	LASALLE	214	81
STA.		TO STA.		
FED. ROAD DIST. NO. 3		ILLINOIS FED. AID PROJECT		



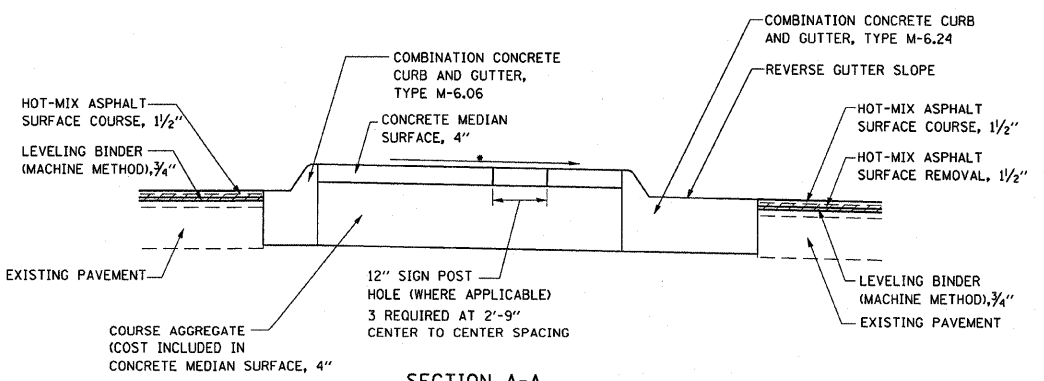
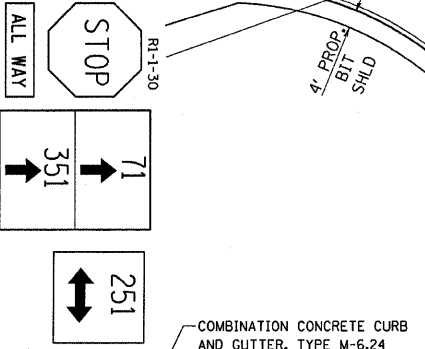
ISLAND DETAIL
NOTE:
ISLAND RADII ARE TO FACE OF CURB



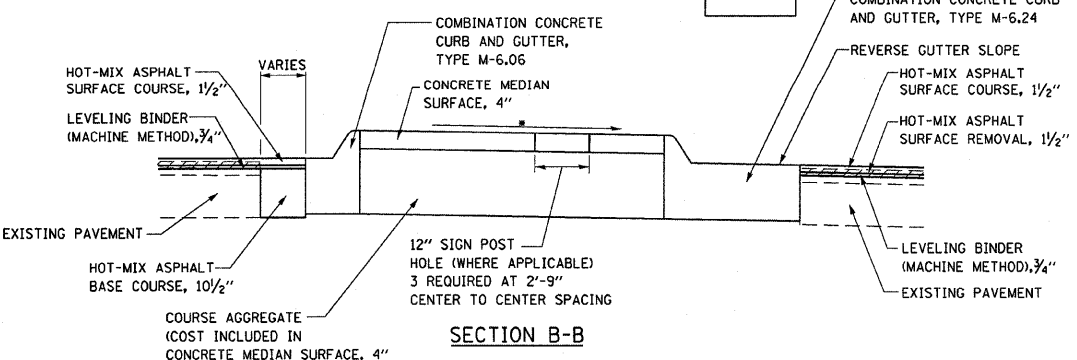
ISLAND DETAIL
NOTE:
ISLAND RADII ARE TO FACE OF CURB



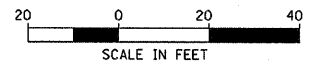
ISLAND DETAIL



SECTION A-A



SECTION B-B



REVISIONS	
NAME	DATE

ILLINOIS DEPARTMENT OF TRANSPORTATION
ISLAND DETAIL
FAP ROUTE 619 (IL ROUTE 71 / 351)
SECTION NO. 70 RS-5 & I
LASALLE COUNTY

SCALE: VERT. DATE
HORIZ. DRAWN BY BANDY
CHECKED BY STEUART