

F.A.P. RTE.	SECTION	COUNTY	TOTAL SHEETS	SHEET NO.
326	(13C)DM-2	KENDALL	3	1
		ILLINOIS	CONTRACT NO. 66A62	

INDEX OF SHEETS

- 1 COVER SHEET
- 2 GENERAL NOTES & SUMMARY OF QUANTITIES
- 3 PLAN VIEW

STATE OF ILLINOIS
DEPARTMENT OF TRANSPORTATION
DIVISION OF HIGHWAYS
**PROPOSED
HIGHWAY PLANS**

F.A.P. ROUTE 326 (IL 47)
SECTION (13C)DM-2

**BUILDING REMOVAL AT 2 LOCATIONS
KENDALL COUNTY**

C-93-004-11

STANDARDS

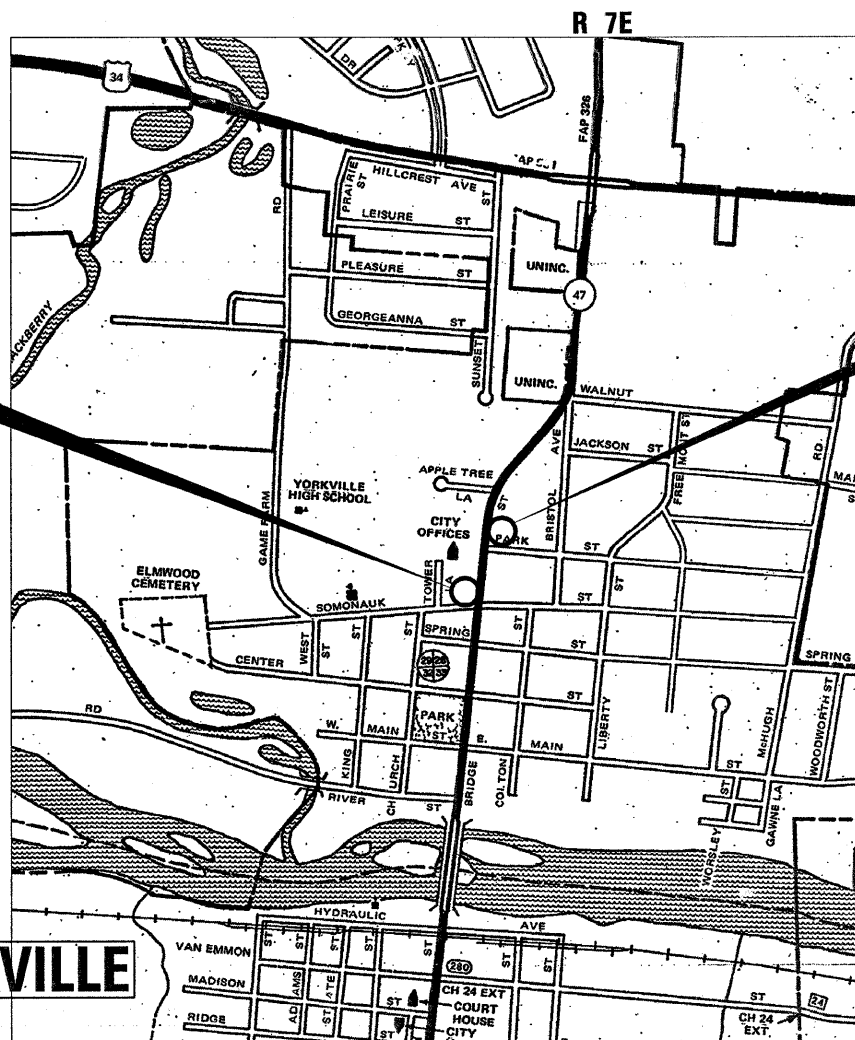
- 000001-06 STANDARD SYMBOLS, ABBREVIATIONS AND PATTERNS
- 701001-02 OFF-ROAD OPERATIONS 2L, 2W, MORE THAN 15' (4.5 m) AWAY
- 701006-03 OFF-ROAD OPERATIONS 2L, 2W, 15' (4.5 m) TO 24" (600 mm) FROM PAVEMENT EDGE
- 701301-04 LANE CLOSURE, 2L, 2W, SHORT TIME OPERATIONS
- 701901-01 TRAFFIC CONTROL DEVICES



**BUILDING REMOVAL
1 RESIDENCE W/GARAGE**

**BUILDING REMOVAL
1 2-STORY HOME**

YORKVILLE



LOCATION MAP
NOT TO SCALE

MICROFILMED _____
REEL NUMBER _____
AWARDED _____
RESIDENT ENGINEER _____
AS BUILT CHANGES WERE MADE
ON THE FOLLOWING SHEETS _____

J.U.L.I.E.
JOINT UTILITY LOCATION INFORMATION FOR EXCAVATION
1-800-892-0123
OR 811

**PROJECT ENGINEER: CRAIG REED, P.E.
UNIT CHIEF: BRAD DUNCAN, P.E.
TOWNSHIP: BRISTOL**

CONTRACT NO. 66A22

STATE OF ILLINOIS
DEPARTMENT OF TRANSPORTATION
DIVISION OF HIGHWAYS

SUBMITTED October 27 20 10
Gregory Ryan
DEPUTY DIRECTOR OF HIGHWAYS, REGION ENGINEER

December 10 20 10
Scott E. Stitt P.E. /s/
Acting ENGINEER OF DESIGN AND ENVIRONMENT

December 10 20 10
Christine M. Reed /s/
DIRECTOR OF HIGHWAYS, CHIEF ENGINEER

**PRINTED BY THE AUTHORITY
OF THE STATE OF ILLINOIS**

GENERAL NOTES

SEEDING SHALL NOT BE PERMITTED AT ANY TIME WHEN THE GROUND IS FROZEN, WET, OR IN AN UNTILLABLE CONDITION. LOCATIONS TO BE SEEDED WILL BE DETERMINED BY THE ENGINEER.

ANY REFERENCE TO A STANDARD IN THESE PLANS SHALL BE INTERPRETED TO MEAN THE EDITION AS INDICATED BY THE SUBNUMBER SHOWN IN THE LIST OF STANDARDS OR THE COPY INCLUDED IN THESE PLANS.

MEMBERS OF JULIE KNOWN TO BE WITHIN THE LIMITS OF THE IMPROVEMENT ARE:

- COMMONWEALTH EDISON
- AT & T
- COMCAST
- NICOR GAS

THE CONTRACTOR SHALL CONTACT JULIE AT LEAST 48 HOURS PRIOR TO EXCAVATION TO DETERMINE WHICH UTILITIES ARE IN THE AREA.

THE PARCEL FOR BUILDING NO. 2 (3KCO095) HAS BEEN IDENTIFIED AS A SITE CONTAINING CONTAMINATED SOIL.

NO EARTH/EMBANKMENT MATERIAL MAY BE REMOVED OFFSITE. THE EARTH SOIL MAY BE MOVED AS LONG AS IT STAYS ON SITE. IF CONSTRUCTION OPERATIONS REQUIRE THAT EARTH MATERIAL TO BE REMOVED OFFSITE THE DISTRICT 3 ENVIRONMENTAL UNIT SHALL BE CONTACTED AT 815-434-8569 PRIOR TO ANY EARTH REMOVAL OPERATIONS. ANY OFFSITE EARTH REMOVAL OPERATIONS WILL ALSO REQUIRE OBTAINING AN ENVIRONMENTAL FIRM TO MONITOR THE OFFSITE REMOVAL AT THE EXPENSE OF THE CONTRACTOR.

CODE NO.	CONSTRUCTION CODE TYPE:	UNIT	URBAN 100% STATE
			0044
			TOTAL QUANTITY
21101615	TOPSOIL FURNISH AND PLACE, 4"	SQ YD	665
25000200	SEEDING, CLASS 2	ACRE	0.14
25000400	NITROGEN FERTILIZER NUTRIENT	POUND	12
25000500	PHOSPHORUS FERTILIZER NUTRIENT	POUND	12
25000600	POTASSIUM FERTILIZER NUTRIENT	POUND	12
25100115	MULCH, METHOD 2	ACRE	0.14
28000250	TEMPORARY EROSION CONTROL SEEDING	POUND	14
67100100	MOBILIZATION	L SUM	1
Z0007601	BUILDING REMOVAL NO. 1	L SUM	1
Z0007602	BUILDING REMOVAL NO. 2	L SUM	1
* Z0049901	REMOVAL AND DISPOSAL OF NON-FRIABLE ASBESTOS, BUILDING NO. 1	L SUM	1
* Z0049902	REMOVAL AND DISPOSAL OF NON-FRIABLE ASBESTOS, BUILDING NO. 2	L SUM	1

* SPECIALTY ITEMS

TOPSOIL & SEEDING						
BUILDING NUMBER (PARCEL #)	TOPSOIL FURNISH AND PLACE 4"	SEEDING CLASS 2	NITROGEN FERTILIZER NUTRIENT	PHOSPHORUS FERTILIZER NUTRIENT	POTASSIUM FERTILIZER NUTRIENT	MULCH METHOD 2
	SQ YD	ACRE	POUND	POUND	POUND	ACRE
1 (3KCO089)	390	0.08	7	7	7	0.08
2 (3KCO095)	275	0.06	5	5	5	0.06
TOTALS	665	0.14	12	12	12	0.14

STATE OF ILLINOIS
DEPARTMENT OF TRANSPORTATION
DISTRICT THREE

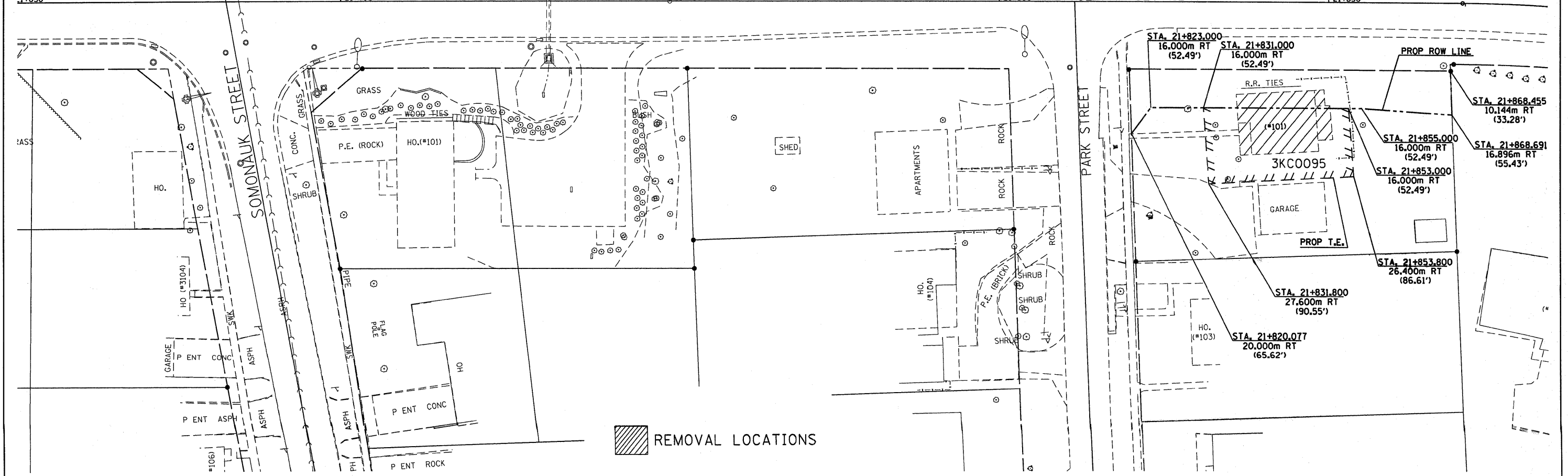
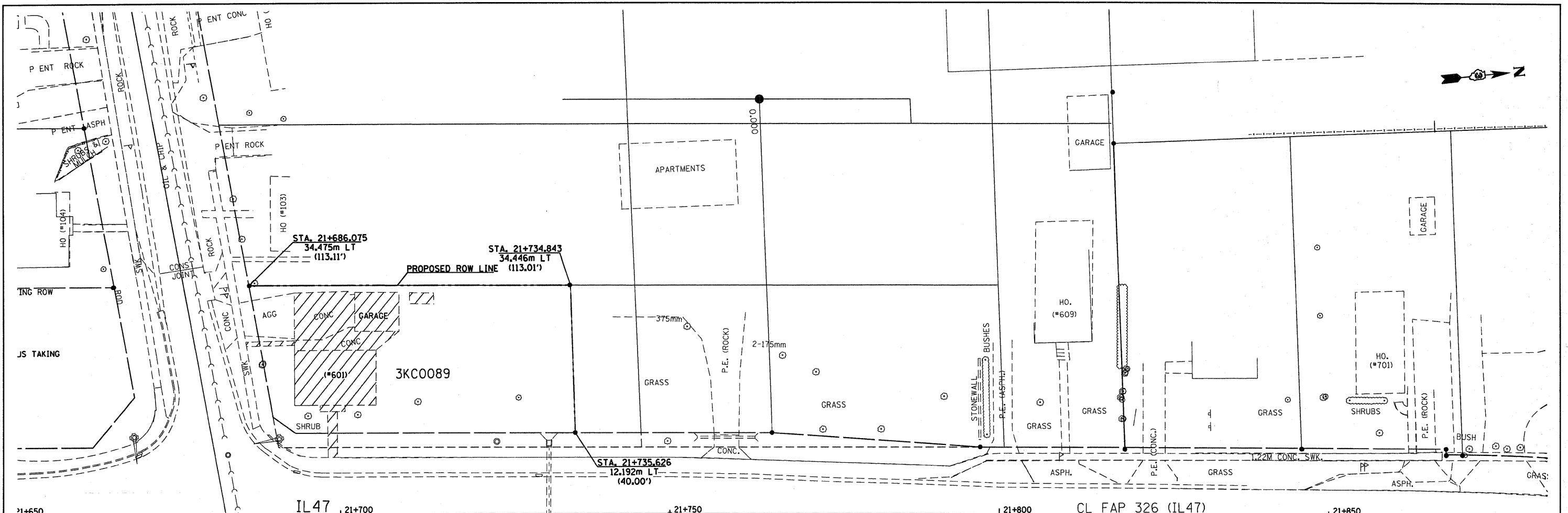
PREPARED BY: *Dana Brown*
DISTRICT STUDIES & PLANS ENGINEER

DATE: 10/27/10

EXAMINED BY: *[Signature]*
DISTRICT CONSTRUCTION ENGINEER

[Signature]
DISTRICT MATERIALS ENGINEER

Bruce A. Hocken
DISTRICT OPERATIONS ENGINEER



 REMOVAL LOCATIONS

FILE NAME =	USER NAME = duncanbd	DESIGNED -	REVISED -	STATE OF ILLINOIS DEPARTMENT OF TRANSPORTATION	PLAN VIEW			F.A.P. RTE.	SECTION	COUNTY	TOTAL SHEETS	SHEET NO.			
cr:\pw\work\p1\dot\duncanbd\224301\036562-sht-detail.dgn		DRAWN -	REVISED -		SCALE:	SHEET NO.	OF	SHEETS	STA.	TO STA.	326	(13)CDM-2	KENDALL	3	3
PLOT SCALE = 7.5000" / IN.		CHECKED -	REVISED -												
PLOT DATE = Oct 25, 2010 - 02:15:57 PM		DATE -	REVISED -												
											CONTRACT NO. 66A62			ILLINOIS FED. AID PROJECT	