

STATE OF ILLINOIS
DEPARTMENT OF TRANSPORTATION
DIVISION OF HIGHWAYS
**PROPOSED
HIGHWAY PLANS**

F.A.S. RTE.	SECTION	COUNTY	TOTAL SHEETS	SHEET NO.
2701	(101,102)RS-3	Effingham	9	1
		ILLINOIS	CONTRACT NO. 74451	

FOR INDEX OF SHEETS, SEE SHEET NO. 2

D-97-034-10



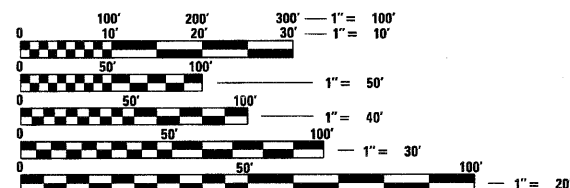
STATION EQUATIONS
 STA 754+69.8 BK = STA 754+70.2 AH
 STA 764+53.5 BK = STA 766+20.2 AH
 STA 852+65.7 BK = STA 852+70.2 AH
 STA 899+95.6 BK = STA 901+10.1 AH
 STA 916+00.5 BK = STA 916+47.9 AH
 STA 924+68.6 BK = STA 918+29.3 AH
 STA 1017+90.2 BK = STA 1018+02.4 AH
 STA 1052+71.6 BK = STA 1053+67.3 AH
 STA 1076+85.6 BK = STA 10+13.35 AH
 STA 17+40.00 BK = STA 1083+80.15 AH
 STA 1103+79.80 BK = STA 1120+49.30 AH
 STA 1154+05.20 BK = STA 1150+50.80 AH
 STA 1226+53.30 BK = STA 1226+53.80 AH
 STA 1230+76.20 BK = STA 1231+27.70 AH

FAS ROUTE 2701 (IL 37)
SECTION (101, 102)RS-3
PROJECT: ACRS-2701(102)
BITUMINOUS RESURFACING
EFFINGHAM COUNTY

C-97-073-10

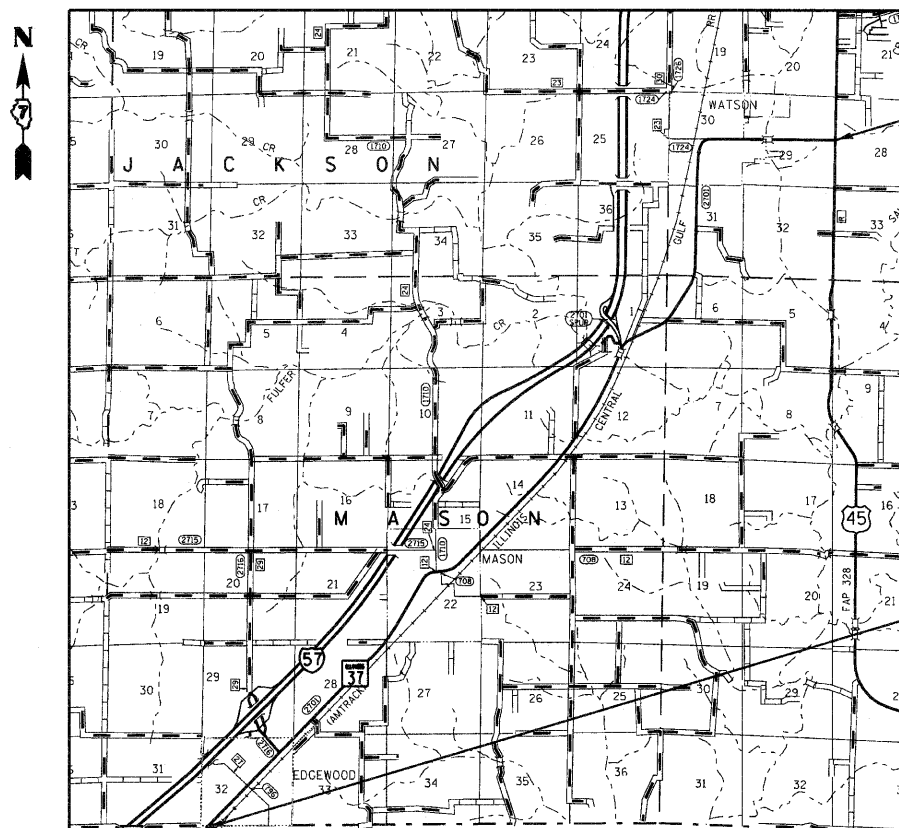
OMISSIONS
 STA 1065+24 TO STA 1069+00: SN 025-0089
 STA 16+78 TO STA 1084+78: CONCRETE PAVEMENT UNDER RR

ADT (2009) = 1,850



FULL SIZE PLANS HAVE BEEN PREPARED USING STANDARD ENGINEERING SCALES. REDUCED SIZED PLANS WILL NOT CONFORM TO STANDARD SCALES. IN MAKING MEASUREMENTS ON REDUCED PLANS, THE ABOVE SCALES MAY BE USED.

J.U.L.I.E.
 JOINT UTILITY LOCATION INFORMATION FOR EXCAVATION
 1-800-892-0123
 OR 811



PROJECT ENDS
STA 1302+00

PROJECT BEGINS
STA 725+80

GROSS LENGTH = 56,574 FT. = 10.71 MILE
 NET LENGTH = 56,038 FT. = 10.61 MILE

PROJECT ENGINEER: MARK DAUGHERTY
 PROJECT MANAGER: BRIAN J. BIERMAN

CONTRACT NO. 74451

STATE OF ILLINOIS
DEPARTMENT OF TRANSPORTATION
DIVISION OF HIGHWAYS

SUBMITTED Oct 26 2010
Roger Drake
 DEPUTY DIRECTOR OF HIGHWAYS, REGION ENGINEER

December 10 2010
Scott E. Stitt P.E.
 acting ENGINEER OF DESIGN AND ENVIRONMENT

December 10 2010
Christine M. Reed
 DIRECTOR OF HIGHWAYS, CHIEF ENGINEER

**PRINTED BY THE AUTHORITY
OF THE STATE OF ILLINOIS**