

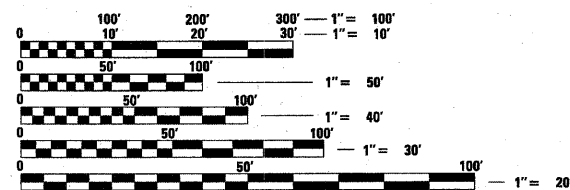
F.A.P. RT.E.	SECTION	COUNTY	TOTAL SHEETS	SHEET NO.
567	06-00002-00-PV	DEKALB	148	1
		ILLINOIS	CONTRACT NO. 87476	

INDEX OF SHEETS

- 1 TITLE SHEET
- 2 SUMMARY OF QUANTITIES
- 3-8 SCHEDULE OF QUANTITIES
- 9 GENERAL NOTES
- 10 ALIGNMENTS AND BENCHMARKS
- 11-15 TYPICAL SECTIONS
- 16-17 REMOVAL PLANS
- 18-27 ROADWAY PLANS AND PROFILES
- 28-34 SANITARY SEWER PLANS AND PROFILES
- 35-44 PAVEMENT MARKING & SIGNAGE PLAN
- 45-46 STAGING PLANS
.
- 47-54 INTERSECTION DETAILS
- 55-67 DRAINAGE PLANS AND PROFILES
- 68-70 DETENTION DRAINAGE AND GRADING PLAN
- 71-78 TEMPORARY EROSION CONTROL & SEEDING PLANS
- 79-90 ROADWAY LIGHTING PLANS AND DETAILS
- 91-93 LANDSCAPE PLANS
- 94 DETAILS
- 95-138 CROSS SECTIONS
- 139-143 DISTRICT 3 DETAILS
- 144-148 DEKALB SANITARY DISTRICT SEWER DETAILS
- 148A-148G BORING LOGS *Added 1-10-11*

HIGHWAY STANDARDS

- 280001-05 TEMPORARY EROSION CONTROL SYSTEMS
- 406201-01 MAILBOX TURNOUT
- 424001-05 CURB RAMPS FOR SIDEWALKS
- 482001-02 HMA SHOULDER ADJACENT TO FLEXIBLE PAVEMENT
- 542301-03 PRECAST REINFORCED CONCRETE FLARED END SECTION
- 542306-02 PRECAST REINFORCED CONCRETE ELLIPTICAL FLARED END SECTION
- 602301-03 INLET, TYPE A
- 602306-03 INLET, TYPE B
- 602401-03 MANHOLE, TYPE A
- 602406-04 MANHOLE TYPE A, 6' DIAMETER
- 602411-02 MANHOLE TYPE A, 7' DIAMETER
- 602701-02 MANHOLE STEPS
- 604001-03 FRAME AND LIDS, TYPE 1
- 604051-03 FRAME AND GRATE, TYPE 11
- 606001-04 COMBINATION CONCRETE CURB AND GUTTER
- 606306-03 CORRUGATED PC CONCRETE MEDIANS
- 701502-04 URBAN LANE CLOSURE, 2L, 2W, BIDIRECTIONAL LEFT TURN LANE
- 701602-05 URBAN LANE CLOSURE, MULTILANE, 2W WITH BIDIRECTIONAL LEFT TURN LANE
- 701701-07 URBAN LANE CLOSURE, MULTILANE INTERSECTION
- 701901-01 TRAFFIC CONTROL DEVICES
- 704001-06 TEMPORARY CONCRETE BARRIER
- 720001-01 SIGN PANEL MOUNTING DETAILS
- 720006-02 SIGN PANEL ERECTION DETAILS
- 720011-01 METAL POSTS FOR SIGNS, MARKERS & DELINEATORS
- 729001-01 APPLICATIONS OF TYPES A&B METAL POSTS (FOR SIGNS & MARKERS)
- 780001-02 TYPICAL PAVEMENT MARKINGS
- BLR 21-8 TYPICAL APPLICATION OF TRAFFIC CONTROL DEVICES



FULL SIZE PLANS HAVE BEEN PREPARED USING STANDARD ENGINEERING SCALES. REDUCED SIZED PLANS WILL NOT CONFORM TO STANDARD SCALES. IN MAKING MEASUREMENTS ON REDUCED PLANS, THE ABOVE SCALES MAY BE USED.

J.U.L.I.E.
JOINT UTILITY LOCATION
INFORMATION FOR EXCAVATION
1-800-892-0123 OR 811



CONTRACT NO. 87476

STATE OF ILLINOIS

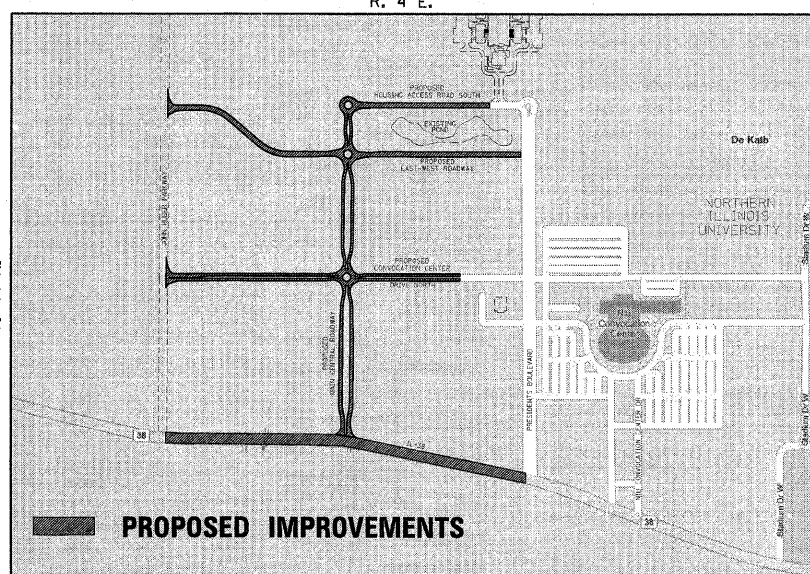
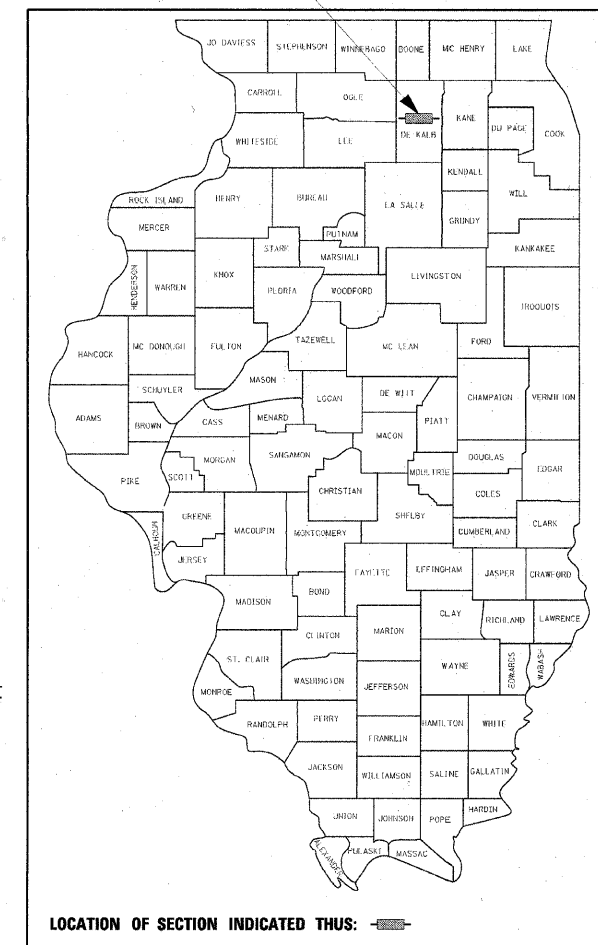
**DEPARTMENT OF TRANSPORTATION
DIVISION OF HIGHWAYS**

**PLANS FOR PROPOSED
NORTHERN ILLINOIS UNIVERSITY
FAR WEST CAMPUS EXPANSION**

**SECTION 06-00002-00-PV
PROJECT HPP-0623 (107)
DEKALB COUNTY**

C-93-155-10

PROJECT LOCATION



LOCATION PLAN
SCALE IN FEET
APPROX. LENGTH = 10350 FT. = 1.96 MILE

PROPOSED IMPROVEMENTS:
CONSTRUCTION OF A NEW ROADWAYS;
SANITARY SEWER; NEW DETENTION
BASIN; STORM SEWER FOR BASIN,
ROADWAY; ROADWAY LIGHTING; AND
LANDSCAPING. LENGTH OF NEW ROADWAY
PORTION IS APPROXIMATELY 10,350 FEET.

TRAFFIC DATA:
IL 38
FUNCTIONAL CLASSIFICATION: OTHER PRINCIPLE
DESIGN DESIGNATION: 3R ARTERIAL
CURRENT ADT: 21900
2030 ADT: 30670
DESIGN SPEED: 55 MPH WEST/45 MPH EAST
POSTED SPEED: 45 MPH

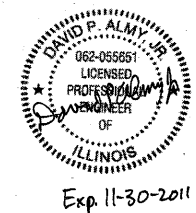
MAIN CENTRAL ROADWAY
FUNCTIONAL CLASSIFICATION: COLLECTOR
DESIGN DESIGNATION: URBAN BLRS
CURRENT ADT: 0
2030 ADT: 8860
DESIGN SPEED: 30 MPH
POSTED SPEED: 30 MPH

CONVOCATION CENTER DRIVE NORTH
FUNCTIONAL CLASSIFICATION: MINOR COLLECTOR
DESIGN DESIGNATION: URBAN BLRS
CURRENT ADT: 0
2030 ADT: 3860
DESIGN SPEED: 35 MPH
POSTED SPEED: 30 MPH

EAST WEST ROADWAY
FUNCTIONAL CLASSIFICATION: MINOR COLLECTOR
DESIGN DESIGNATION: URBAN BLRS
CURRENT ADT: 0
2030 ADT: 5730
DESIGN SPEED: 35 MPH
POSTED SPEED: 30 MPH

HOUSING ACCESS ROAD SOUTH
FUNCTIONAL CLASSIFICATION: LOCAL ROAD
DESIGN DESIGNATION: URBAN BLRS
CURRENT ADT: 0
2030 ADT: 5400
DESIGN SPEED: 30 MPH
POSTED SPEED: 30 MPH

UTILITY NOTE
THE LOCATIONS OF THOSE BURIED AND ABOVEGROUND UTILITIES SHOWN ARE APPROXIMATE. ARE SHOWN FOR CONTRACTOR INFORMATIONAL USE ONLY, AND ARE NOT TO BE REFERENCED FOR CONSTRUCTION PURPOSES. THE IMPLIED PRESENCE OR ABSENCE OF UTILITIES IS NOT TO BE CONSTRUED BY THE OWNER, ENGINEER, CONTRACTOR, OR SUBCONTRACTORS TO BE AN ACCURATE AND COMPLETE REPRESENTATION OF UTILITIES THAT MAY OR MAY NOT EXIST ON THE CONSTRUCTION SITE. BURIED AND ABOVEGROUND UTILITY LOCATION, IDENTIFICATION, AND MARKING ARE THE SOLE RESPONSIBILITY OF THE CONTRACTOR. REROUTING, DISCONNECTION, PROTECTION, ETC. OF ANY UTILITIES MUST BE COORDINATED AMONG THE CONTRACTOR, UTILITY COMPANY, AND OWNER. SITE SAFETY, INCLUDING THE AVOIDANCE OF HAZARDS, ASSOCIATED WITH BURIED AND ABOVEGROUND UTILITIES REMAIN THE SOLE RESPONSIBILITY OF THE CONTRACTOR.



© Copyright Hanson Professional Services Inc. 2010

**ILLINOIS DESIGN FIRM
LICENSE NO: 184-001-084**

APPROVED 11/20 2010
[Signature]
LOCAL AGENCY OFFICIAL

PASSED 11/10 2010
[Signature]
DISTRICT PROJECT IMPLEMENTATION ENGINEER

APPROVED 11/10 2010
[Signature]
DEPUTY DIRECTOR OF HIGHWAYS, REGION 2 ENGINEER

STATE OF ILLINOIS
DEPARTMENT OF TRANSPORTATION

**PRINTED BY THE AUTHORITY
OF THE STATE OF ILLINOIS**