

CONSTRUCTION PLANS FOR TAYLORVILLE MUNICIPAL AIRPORT

CITY OF TAYLORVILLE
TAYLORVILLE, ILLINOIS

ILLINOIS PROJECT TAZ - 4342
S.B.G. PROJECT 3-17-SBGP-XX

REHABILITATE NORTH PORTION OF
AIRCRAFT PARKING APRON

NOVEMBER 14, 2014

SUMMARY OF QUANTITIES			
ITEM NO.	Description	UNIT	QUANTITY
AR150510	ENGINEER'S FIELD OFFICE	LS	1
AR150520	MOBILIZATION	LS	1
AR152410	UNCLASSIFIED EXCAVATION	CY	40
AR152511	SUBGRADE REPAIR	SY	500
AR161900	REMOVE CLASS C FENCE	LF	85
AR162504	CLASS E FENCE 4'	LF	85
AR162570	DETECTOR LOOP	LS	1
AR201660	BITUMINOUS CRACK REPAIR	LF	1,000
AR201672	CRACK CONTROL FABRIC	LF	2,600
AR209606	CRUSHED AGG. BASE COURSE - 6"	SY	500
AR401610	BITUMINOUS SURFACE COURSE	TON	1,055
AR401650	BITUMINOUS PAVEMENT MILLING	SY	8,100
AR401655	BUTT JOINT CONSTRUCTION	SY	500
AR501506	6" PCC PAVEMENT	SY	356
AR501900	REMOVE PCC PAVEMENT	SY	356
AR510510	TIE DOWN	EA	18
AR510900	REMOVE TIE DOWN	EA	20
AR602510	BITUMINOUS PRIME COAT	GAL	60
AR603510	BITUMINOUS TACK COAT	GAL	1,380
AR620520	PAVEMENT MARKING-WATERBORNE	SF	1,415
AR620525	PAVEMENT MARKING-BLACK BORDER	SF	1,025
AR901510	SEEDING	AC	0.12
AR908525	KNITTED STRAW MAT	SY	565

SHEET LIST TABLE	
Sheet Number	Sheet Title
01	COVER SHEET
02	SITE PLAN
03	CONSTRUCTION ACTIVITY PLAN
04	CONSTRUCTION SAFETY PHASING PLAN NOTES
05	EXISTING CONDITIONS AND REMOVALS
06	TYPICAL SECTIONS 1
07	TYPICAL SECTIONS 2
08	PROPOSED IMPROVEMENTS
09	PROPOSED STAKING PLAN
10	PAVEMENT MARKING & TURFING PLAN
11	MISCELLANEOUS DETAILS 1
12	MISCELLANEOUS DETAILS 2
13	MISCELLANEOUS DETAILS 3
14	MISCELLANEOUS DETAILS 4

811 Know what's below. Call before you dig.
www.811.org

J.U.L.I.E. JOINT UTILITY LOCATING INFORMATION FOR EXCAVATORS
www.illinois1call.com

THE LOCATION, SIZE AND TYPE OF MATERIAL OF EXISTING UNDERGROUND UTILITIES INDICATED ON THE PLANS IS NOT REPRESENTED AS BEING ACCURATE, SUFFICIENT OR COMPLETE. IT SHALL BE THE CONTRACTOR'S RESPONSIBILITY TO DETERMINE ACTUAL LOCATIONS OF ALL SUCH FACILITIES, INCLUDING SERVICE CONNECTORS TO UNDERGROUND UTILITIES. PRIOR TO CONSTRUCTION, THE CONTRACTOR SHALL NOTIFY UTILITY COMPANIES OF HIS OPERATIONAL PLANS, OBTAIN FROM RESPECTIVE UTILITY COMPANIES DETAILED INFORMATION AND ASSISTANCE RELATIVE TO THE LOCATION OF THEIR FACILITIES AND THE WORKING SCHEDULE OF THE COMPANIES FOR REMOVAL OR ADJUSTMENT WHERE REQUIRED. IN THE EVENT AN UNEXPECTED UTILITY INTERFERENCE IS ENCOUNTERED DURING CONSTRUCTION, THE CONTRACTOR SHALL IMMEDIATELY NOTIFY THE UTILITY COMPANY OF JURISDICTION AND THE ONE-CALL NOTICE SYSTEM. THE ENGINEER SHALL ALSO BE IMMEDIATELY NOTIFIED, ANY SUCH UTILITY OR SERVICES SHALL BE RESTORED TO SERVICE AT ONCE AND PAID FOR BY THE CONTRACTOR AT NO ADDITIONAL COST TO THE CONTRACT.

CALL J.U.L.I.E. FOR UTILITY INFORMATION AT 811.

DESIGN INFORMATION

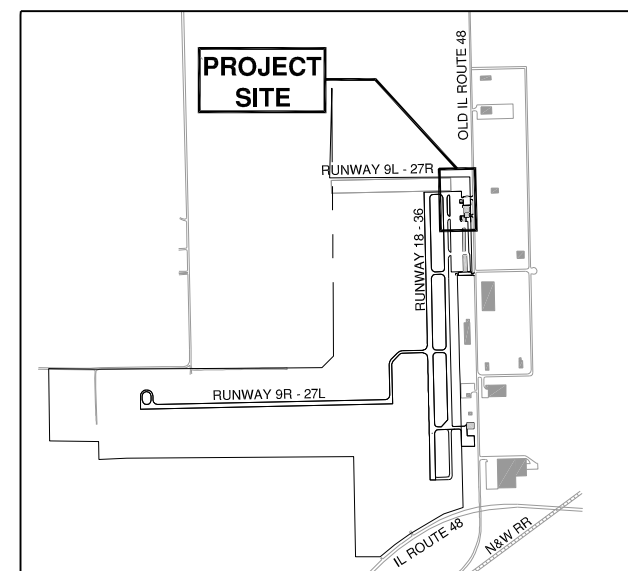
- GEOMETRIC CRITERIA
- AIRPLANE DESIGN GROUP II
- TAXIWAY DESIGN GROUP II
- PAVEMENT DESIGN CRITERIA
- AIRCRAFT SINGLE WHEEL GEAR
- DEPARTURE WEIGHT = 12,500 LBS.
- 100 ANNUAL DEPARTURES

CALL J.U.L.I.E.
BEFORE EXCAVATING
1-800-892-0123

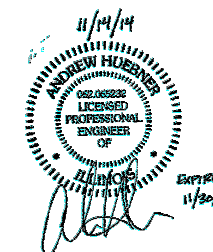
TOWNSHIP: 13 NORTH
RANGE: 2 WEST OF THE 4TH P.M.
SECTION: 32
COUNTY: CHRISTIAN
CIVIL TOWNSHIP: TAYLORVILLE



LOCATION MAP



SITE PLAN



**CITY OF TAYLORVILLE
TAYLORVILLE MUNICIPAL AIRPORT
TAYLORVILLE, ILLINOIS**

APPROVED Greg Bratherton
MAYOR

DATE 11/13/14

APPROVED Shirley J. Postolky
CITY CLERK

DATE 11/13/14



CRAWFORD MURPHY & TILLY, INC.
CONSULTING ENGINEERS

- SPRINGFIELD, IL
- AURORA, IL
- ST. LOUIS, MO

SUBMITTED BY Andrew Heber

DATE 11/14/14

CMT JOB NUMBER 13050-01