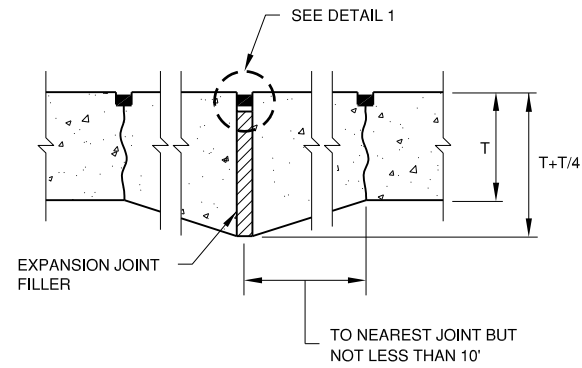
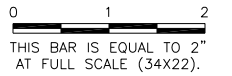


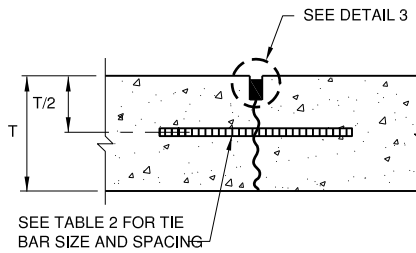
TA006

REVISIONS		
NUMBER	BY	DATE



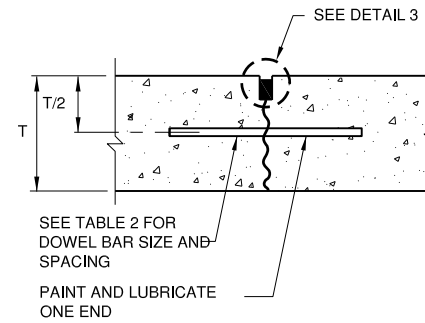
TYPE A THICKENED ISOLATION

SYMBOL — A — **T**



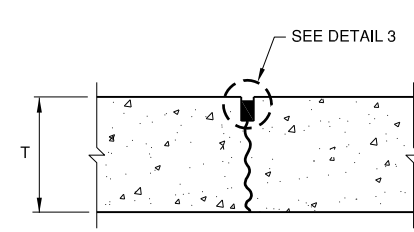
TYPE B HINGED (TIED) CONTRACTION

SYMBOL — B —



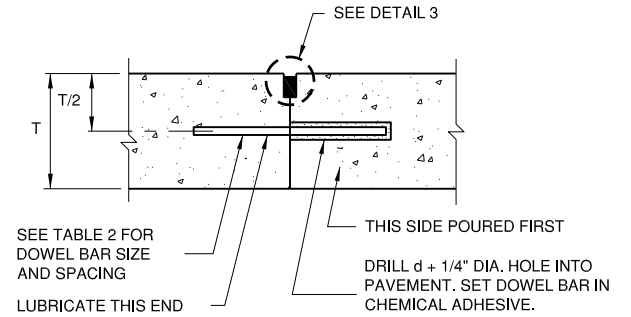
TYPE C DOWELED CONTRACTION

SYMBOL — C —



TYPE D DUMMY CONTRACTION

SYMBOL — D —



TYPE E DOWELED CONSTRUCTION

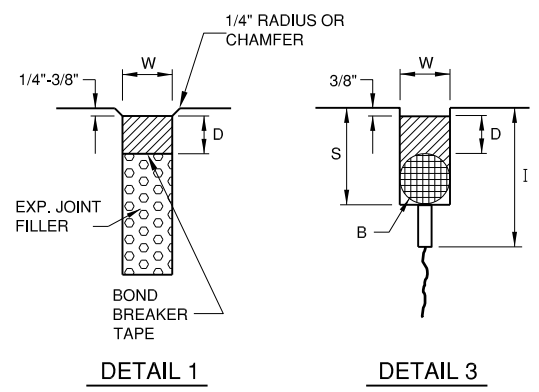
SYMBOL — E —

PAVEMENT THICKNESS T - INCHES	DEPTH OF CONTRACTION JOINT INITIAL SAW CUT I, INCHES I=(T/3) ± 1/4"
5	1.67"
6	2.00"
7	2.33"
8	2.67"
9	3.00"
10	3.33"
11	3.67"
12	4.00"
13	4.33"
14	4.67"
15	5.00"
16	5.33"
17	5.67"
18	6.00"

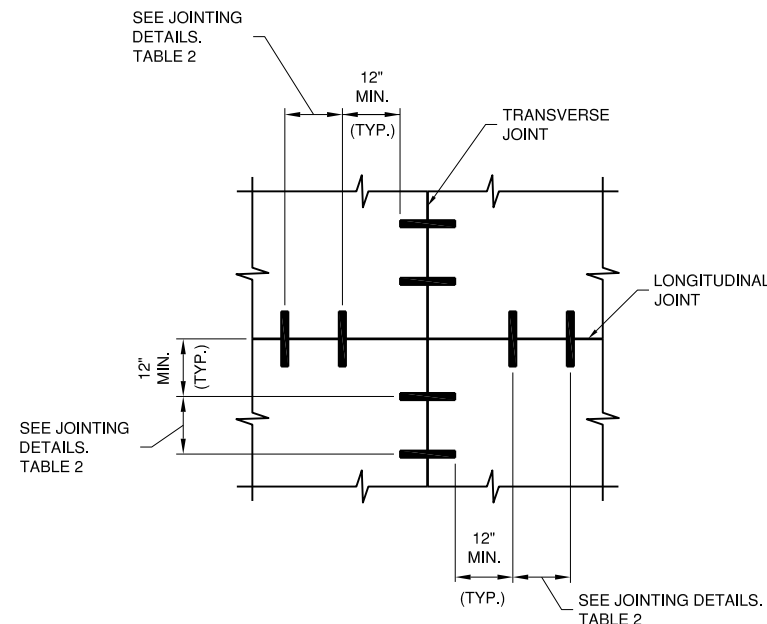
PAVEMENT THICKNESS T - INCHES	DOWEL BAR DETAILS			TIE BAR DETAILS		
	DIA.	LENGTH	SPACING	BAR SIZE	LENGTH	SPACING
5	5/8"	12"	12"	#4	24"	30"
6	3/4"	18"	12"	#5	30"	30"
7	3/4"	18"	12"	#5	30"	30"
8	1"	19"	12"	#5	30"	30"
9	1"	19"	12"	#5	30"	30"
10	1"	19"	12"	#5	30"	30"
11	1"	19"	12"	#5	30"	30"
12	1"	19"	12"	#5	30"	30"
13	1 - 1/4"	20"	15"	#5	30"	30"
14	1 - 1/4"	20"	15"	#5	30"	30"
15	1 - 1/4"	20"	15"	#5	30"	30"
16	1 - 1/4"	20"	15"	#5	30"	30"
17	1 - 1/2"	20"	18"	#5	30"	30"
18	1 - 1/2"	20"	18"	#5	30"	30"

	DETAIL 1	DETAIL 2	DETAIL 3	DETAIL 4	DETAIL 5
	HOT/ COLD POUR	HOT/ COLD POUR	SILICONE	PRE FORMED	HOT/ COLD POUR
W=WIDTH OF SEALANT RESERVOIR (IN.)	3/4	1/2	1/2	3/8" COMPRESSED	3/16"
D=DEPTH OF SEALANT RESERVOIR (IN.)	3/4	1/2	1/4	N/A	I
B=BACKER ROD DIAMETER (IN.)	N/A	5/8	5/8	N/A	N/A
S=SECOND SAWCUT DEPTH (IN.) MINIMUM	N/A	1-3/8	1-3/8	1-1/2	N/A

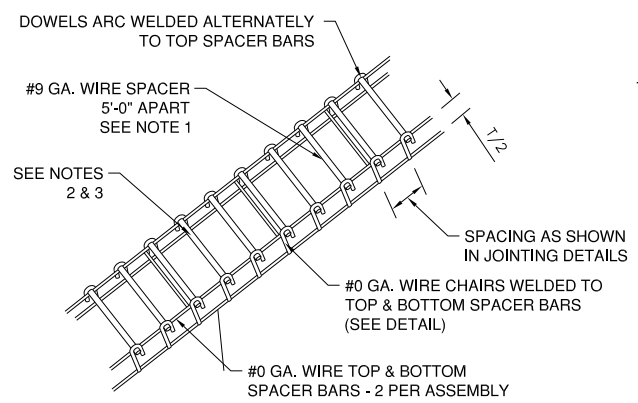
- JOINT NOTES**
- ALL EDGES OF NEW SLABS, FREE STANDING OR CLOSURE, SHALL BE EDGED WITH AN APPROVED TOOL HAVING A RADIUS OF 1/8" TO 1/4" TO FACILITATE SAWING OF THE SEALANT RESERVOIR. A RADIUS > 1/4" WILL NOT BE ACCEPTABLE.
 - THE INITIAL SAWCUT FOR ALL LONGITUDINAL & TRANSVERSE CONTRACTION JOINTS SHALL BE SAWS AS SOON AS POSSIBLE AFTER PLACEMENT OF THE PAVEMENT.
 - ALL TIE BARS & MESH SHALL BE SECURELY HELD IN PLACE BY SUPPORT PINS OR OTHER APPROVED METHODS TO PREVENT SHIFTING DURING & AFTER CONCRETE PLACEMENT.
 - TIE BARS SHALL BE DEFORMED BARS IN CONFORMANCE WITH THE SPECIFICATIONS.
 - THE INITIAL SAWCUT SHALL BE MADE TO THE 1/8" WIDTH INDICATED. INITIAL SAWING TO THE DIMENSIONS OF THE SECOND SAWCUT WILL NOT BE ALLOWED.



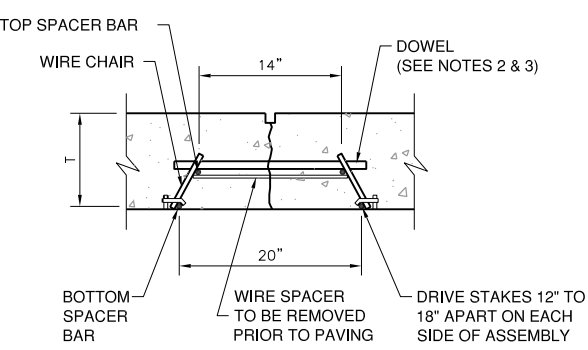
JOINT SEALING DETAILS



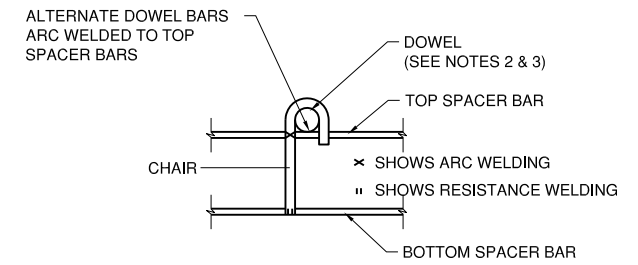
DOWEL PLACEMENT DETAIL
N.T.S.



DOWEL BASKET ASSEMBLY DETAIL
N.T.S.



DOWEL BAR INSTALLATION DETAIL
N.T.S.



TYPICAL DOWEL BASKET ELEVATION DETAIL SHOWING CHAIR

DOWEL BASKET DETAILS
N.T.S.

- DOWEL BASKET NOTES**
- #9 GA. WIRE SPACER BAR ARC WELDED TO THE BOTTOM OF TOP SPACER BAR. (MAY BE MECHANICALLY ATTACHED IN LIEU OF WELDING) 3 REQUIRED PER UNIT. THIS WIRE MUST BE CUT OR REMOVED PRIOR TO PAVING.
 - DOWEL BAR DIAMETER, LENGTH & SPACING SHALL BE AS SHOWN IN TABLE 2.
 - DOWELS SHALL BE EPOXY COATED FULL LENGTH OF DOWEL. IMMEDIATELY PRIOR TO PAVING, THE FREE END OF EACH DOWEL SHALL BE LUBRICATED OR OILED, FOR HALF THE LENGTH OF THE DOWEL.

TAYLORVILLE MUNICIPAL AIRPORT
TAYLORVILLE, ILLINOIS
REHABILITATE NORTH PORTION OF AIRCRAFT PARKING APRON
MISCELLANEOUS DETAILS 3

© Copyright CMT, Inc.
CMT
 CRAWFORD, MURPHY & TILLY, INC.
 CONSULTING ENGINEERS
 License No. 184-000613

DESIGN BY:	AJH
DRAWN BY:	CMT
CHECKED BY:	CBG
APPROVED BY:	CET
DATE:	NOVEMBER 14, 2014
JOB No:	13050-01
IL PROJ. NO.	TAZ-4342
SBG NO.	3-17-SBGP-XX
SHEET	13 OF 14 SHEETS

K:\Taylorville\1305001\Draw Sheets