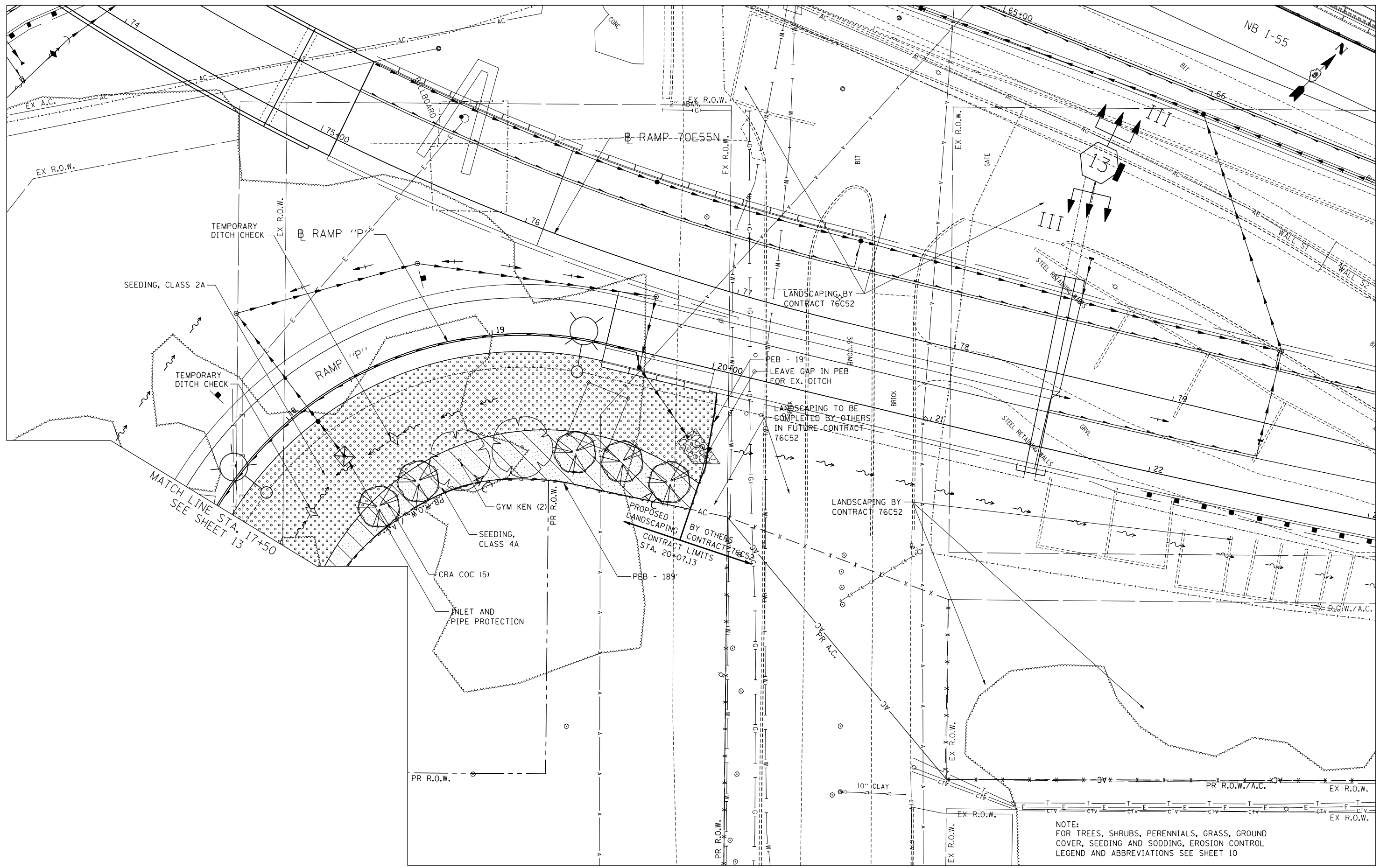


\DBTR1-76C51-LAYOUT.LDN, \DBTR1-35-BORDER.LDN, \DBTR1-76C52-MOTIF.LDN, \DBTR1-37-LANDSCAP.LDN, \DBCONN-99-MOTIF.LDN
 11-28-2012, 13:55:07 BONDHUJO \FS-004\AMVAULT.D-TRANS.07-2202-28868-001\CIVIL\CAO\99-ALL-CONTRACTS\TRI\SHEETS CONTRACT 76F35\OBTR1-35-SHT-LANDSCAP-2000.LDN



FILE NAME =
 #FILEL#

USER NAME = #USER#
 PLOT SCALE = #SCALE#
 PLOT DATE = #DATE#

DESIGNED - JM
 DRAWN - JB
 CHECKED - ACL
 DATE - 08/03/12

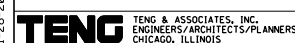
REVISED -
 REVISED -
 REVISED -
 REVISED -

**STATE OF ILLINOIS
 DEPARTMENT OF TRANSPORTATION**

PROPOSED LANDSCAPING PLANS

SCALE: 1"=20' SHEET NO. 6 OF 8 SHEETS STA. TO STA.

F.A.U. RTE.	SECTION	COUNTY	TOTAL SHEETS	SHEET NO.
9214	82-1-12LS	ST. CLAIR	29	14
CONTRACT NO. 76F35				
FED. ROAD DIST. NO. ILLINOIS FED. AID PROJECT				



TENGL & ASSOCIATES, INC.
 ENGINEERS/ARCHITECTS/PLANNERS
 CHICAGO, ILLINOIS