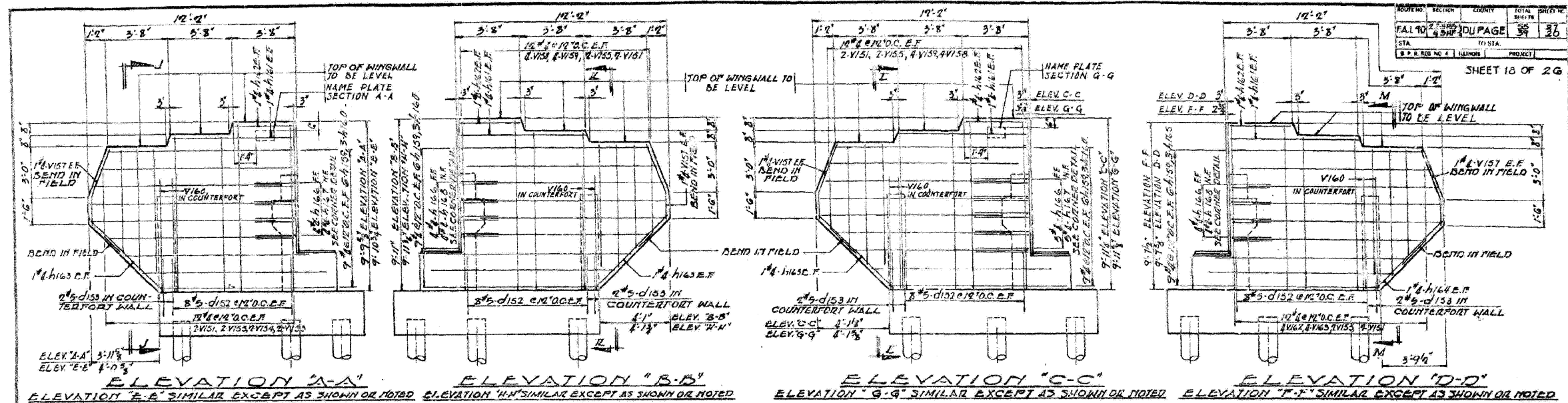
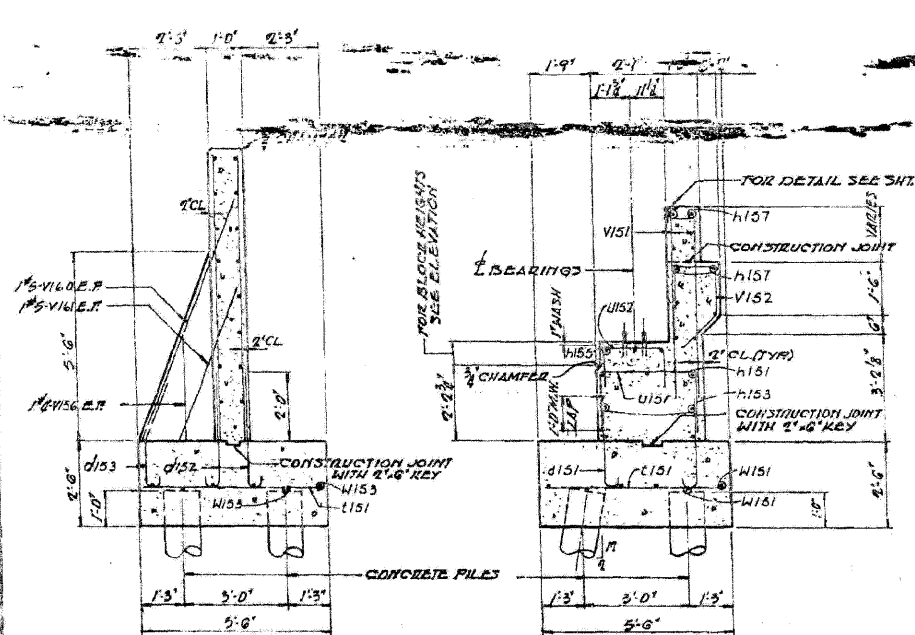


STATE OF ILLINOIS  
DEPARTMENT OF TRANSPORTATION

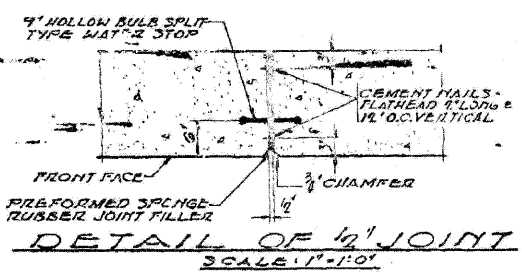


ELEVATION "A-A" ELEVATION "B-B" ELEVATION "C-C" ELEVATION "D-D"  
ELEVATION "E-E" SIMILAR EXCEPT AS SHOWN OR NOTED. ELEVATION "H-H" SIMILAR EXCEPT AS SHOWN OR NOTED. ELEVATION "G-G" SIMILAR EXCEPT AS SHOWN OR NOTED. ELEVATION "F-F" SIMILAR EXCEPT AS SHOWN OR NOTED.

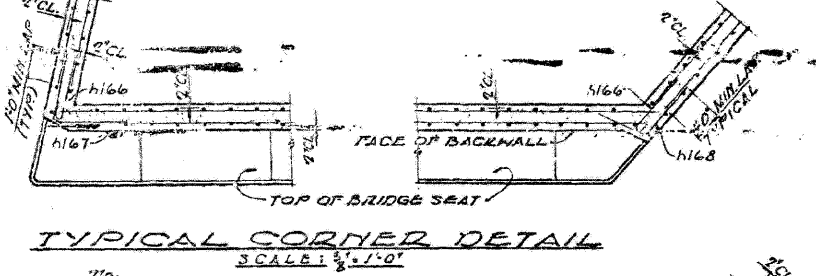


SECTION "J-J" SECTION "N-N"  
SECTIONS "K-K", "L-L" AND "M-M" SIMILAR SECTIONS "P-P", "Q-Q" AND "R-R" SIMILAR  
SCALE: 1/4" = 1'-0"

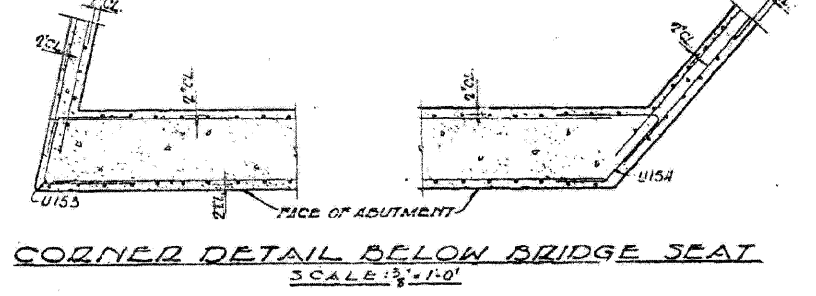
NOTE: BAR MARKS AND DIMENSIONS SHOWN FOR SECTIONS J-J AND N-N ONLY.



DETAIL OF 1/2" JOINT  
SCALE: 1" = 1'-0"



TYPICAL CORNER DETAIL  
SCALE: 1/2" = 1'-0"



CORNER DETAIL BELOW BRIDGE SEAT  
SCALE: 1/2" = 1'-0"

NOTE: FOR FOOTING PLAN SEE SHEETS 12 AND 13. FOR ELEVATION OF ABUTMENTS AND LOCATION OF WINGWALLS SEE SHEETS 14, 15, 16 AND 17.

ABUTMENT DETAILS  
GRADE SEPARATION  
F.A.I. ROUTE 90 OVER  
F.A.S. 1135 (YORK ROAD)  
PROJECT  
F.A.I. ROUTE 90 SECTION 22 3HB.1  
DUPAGE COUNTY  
STATION 971+19.95

ALFRED BENESCH & COMPANY CONSULTING ENGINEERS  
10 SOUTH WABASH AVE CHICAGO, ILLINOIS

FOR INFORMATION ONLY

benesch

alfred benesch & company  
Engineers - Surveyors - Planners  
205 North Michigan Avenue, Suite 2400  
Chicago, Illinois 60601  
312-565-0450 Job No. 10050

SHEET NO. 25 25 SHEETS	F.A.I. RTE. 290	SECTION 2009-099 BR	COUNTY COOK/DUPAGE	TOTAL SHEETS 309	SHEET NO. 244
	CONTRACT NO. 60157				
FED. ROAD DIST. NO.		ILLINOIS FED. AID PROJECT			

EXISTING PLAN INFORMATION 8 OF 10  
STRUCTURE NO. 022-0006

x:\10000s\10050\engineering\documents\contract-1\SN\_022-0006-0005-York-Rd\0006-60051-025-Exisplan\_03.dgn 18:42:00 11/12/2009