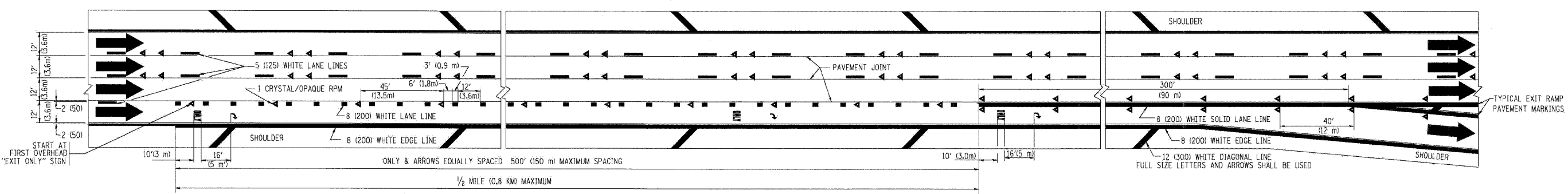
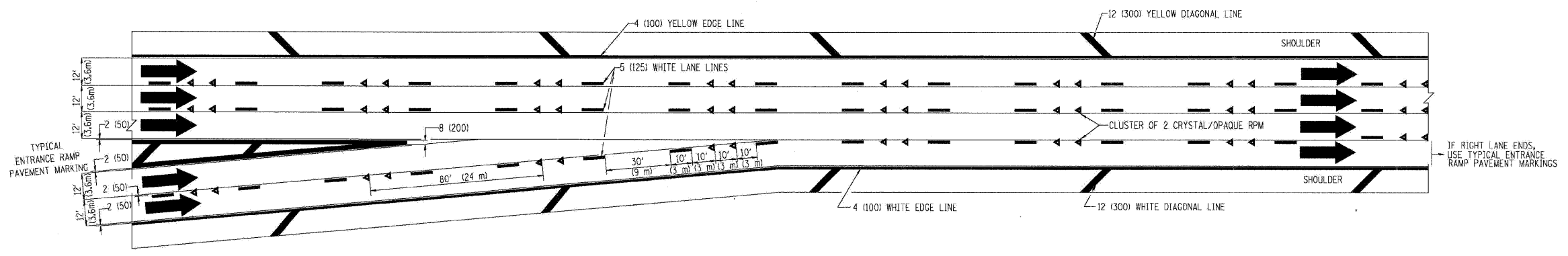


TYPICAL ENTRANCE/EXIT RAMP COMBINATION PAVEMENT MARKINGS



TYPICAL EXIT ONLY LANE PAVEMENT MARKINGS



TYPICAL TWO LANE ENTRANCE RAMP PAVEMENT MARKINGS

FILE NAME = ...:\prr\in_abc_c4_01_c-12b.dgn	DESIGNED - AJP	REVISIONS -	benesch	STATE OF ILLINOIS DEPARTMENT OF TRANSPORTATION	MULTI-LANE FREEWAY PAVEMENT MARKING			F.A.I. R.T.E. = 290	SECTION 2009-0998R	COUNTY COOK/DUPAGE	TOTAL SHEETS 309	SHEET NO. 306
USER NAME = jmo_jewski	CHECKED - JWM	REVISIONS -						CONTRACT NO. 60157				
PLOT DATE = 11/13/2009	DATE = 10/16/09	REVISIONS -						FED. ROAD DIST. NO. [ILLINOIS] FED. AID PROJECT				
								SCALE: N.T.S. SHEET NO. 13 OF 16 SHEETS STA. TO STA.				