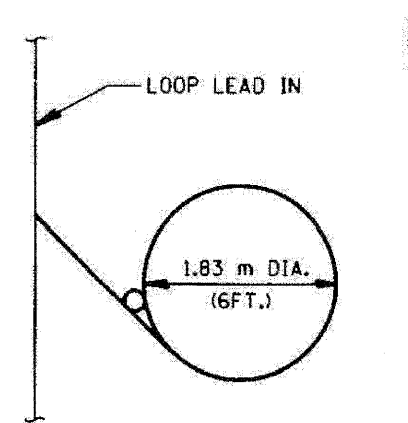
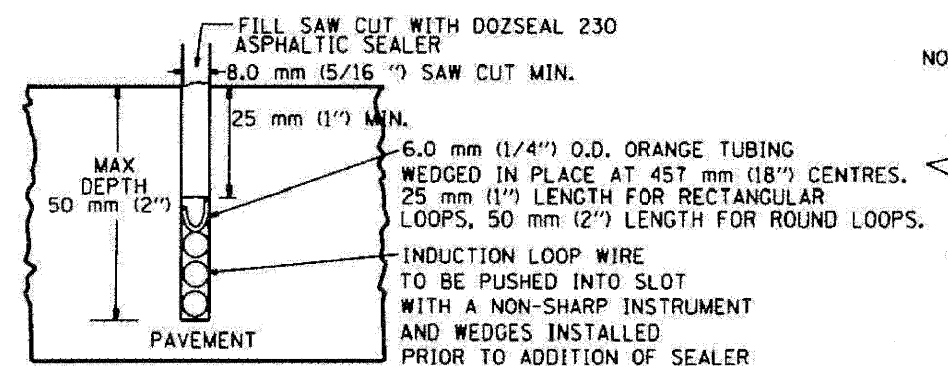
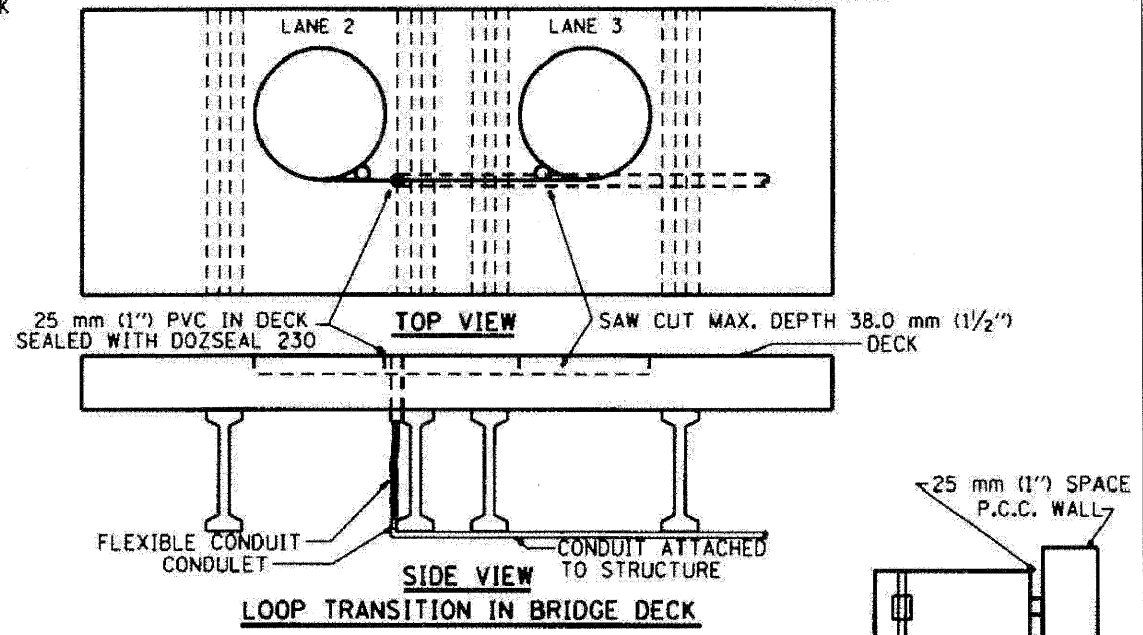
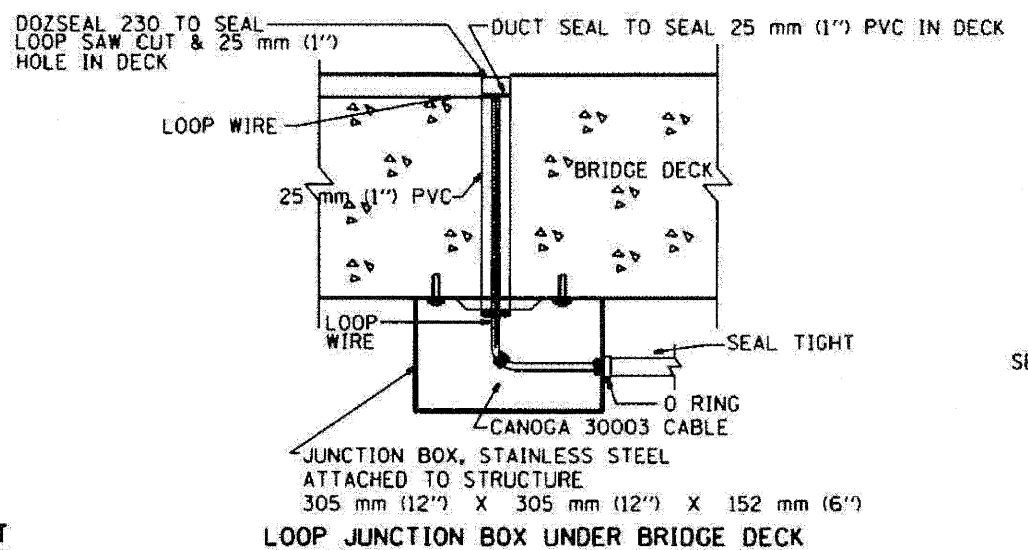


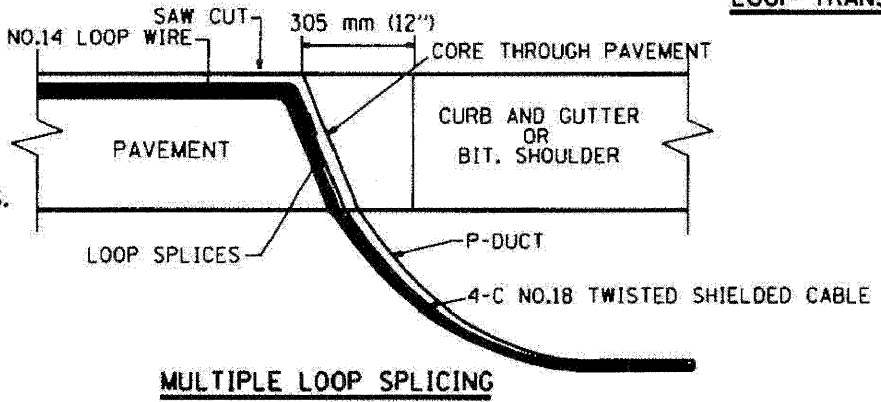
F.A. RTE.	SECTION	COUNTY	TOTAL SHEETS	SHEET NO.
STA.	TO STA.			
FED. ROAD DIST. NO.	ILLINOIS FED. AID PROJECT			



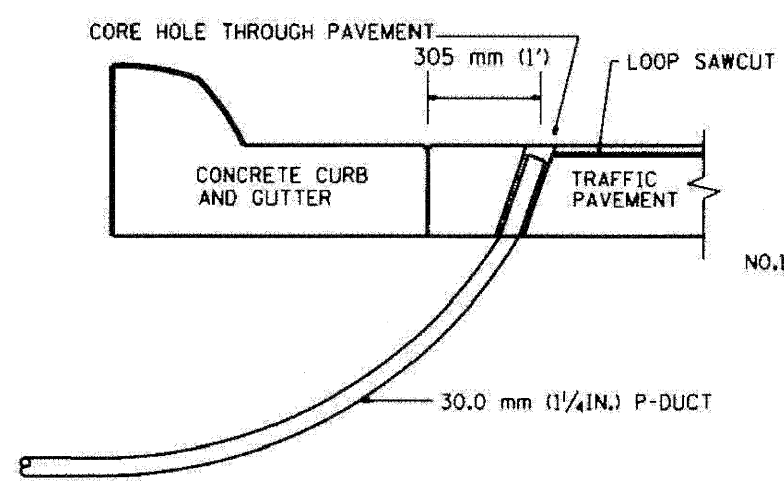
TYPICAL LOOP SAWCUT LAYOUT



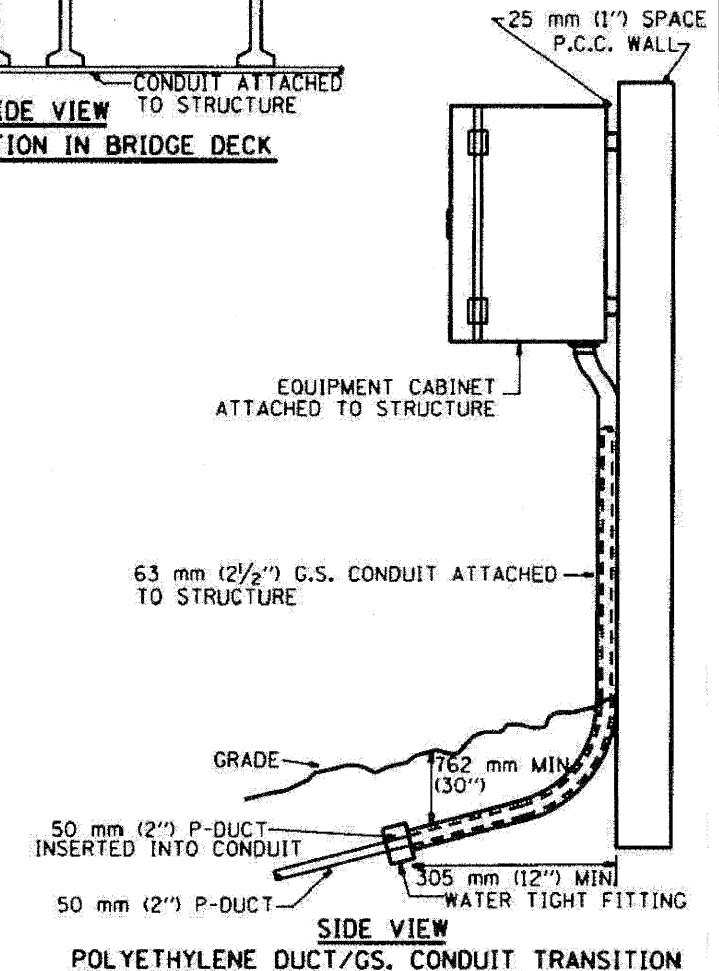
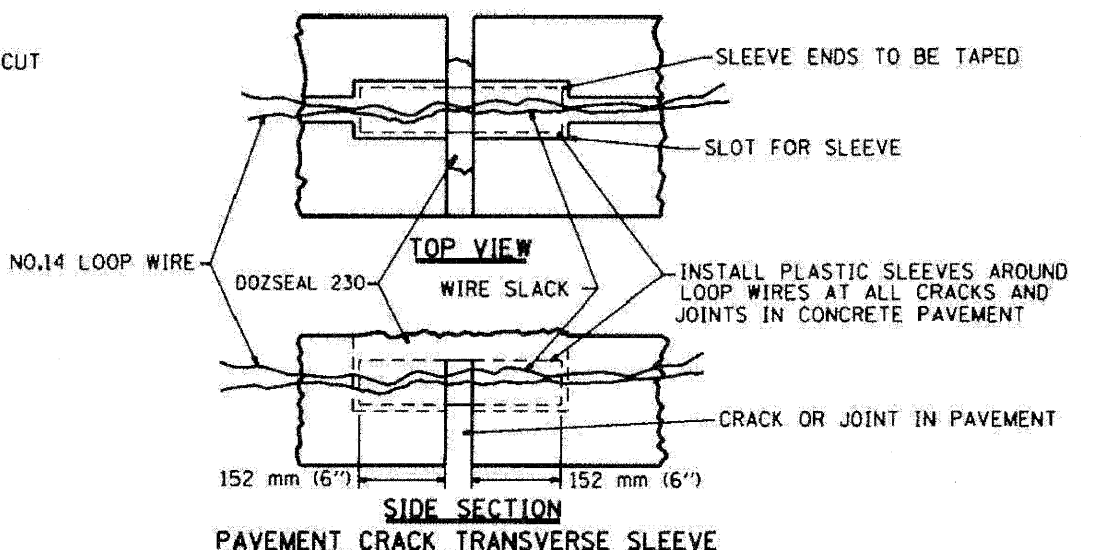
LOOP CROSS SECTION IN PAVEMENT



MULTIPLE LOOP SPLICING



SIDE SECTION LOOP LEAD-IN TRANSITION DETAIL



REVISION	DATE
R.L.	5/04
R.L.	5/05
T.C.	11/05
R.L.	08/06
T.C.	10/06

ILLINOIS DEPARTMENT OF TRANSPORTATION
TRAFFIC SYSTEMS CENTER

LOOP, CONDUIT & DUCT INSTALLATION DETAILS

SCALE: VERT. NONE
DATE: 6-22-04

DRAWN BY: G.A.
CHECKED BY: A.L.

TRAFFIC SYSTEMS CENTER (TY-1TSC-418*4)

FILE NAME -	DESIGNED - GHT	REVISED -
...\\prpln.abc.c3.ts.det.12.dgn	DRAWN - DMS	REVISED -
USER NAME - jmajewski	CHECKED - MPM	REVISED -
PLOT DATE - 1/25/2010	DATE - 1/25/10	REVISED -

benesch

STATE OF ILLINOIS
DEPARTMENT OF TRANSPORTATION

TRAFFIC SYSTEM CENTER
DETAIL SHEETS

SCALE: N.T.S. SHEET NO. 20 OF 23 SHEETS STA. TO STA.

F.A. RTE.	SECTION	COUNTY	TOTAL SHEETS	SHEET NO.
290	(2525, ETC., 2727RS-8	COOK	201	178
FED. ROAD DIST. NO.	ILLINOIS FED. AID PROJECT			