

8000-290

HILLEBRENNER
PHONE: (309) 671-3481

PROJECT ENGINEER: JIM MILLER
PHONE: (309) 671-3451

STATE OF ILLINOIS
DEPARTMENT OF TRANSPORTATION
DIVISION OF HIGHWAYS

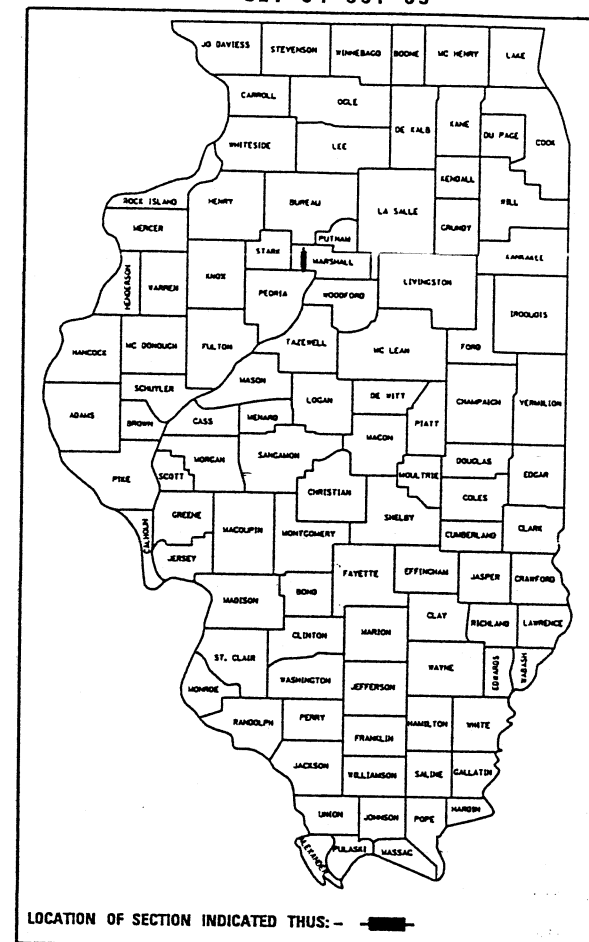
PROPOSED
HIGHWAY PLANS

F.A.P. RTE. 318 (IL 29)
SECTION D4 BRIDGE REPAIR 2005-DL
PROJECT NO. SN. 062-0008
MARSHALL COUNTY

F.A.P. RTE.	SECTION	COUNTY	TOTAL SHEETS	SHEET NO.
318	D4	MARSHALL	11	1

* D4 BRIDGE REPAIR 2005-DL-2

SLT-94-001-05

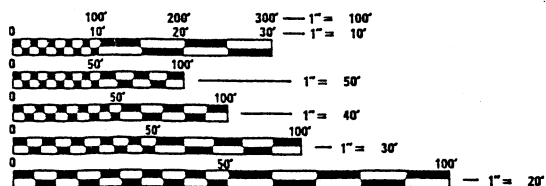


INDEX OF SHEETS:

1. COVER SHEET
2. SUMMARY OF QUANTITIES
3. SCHEDULE OF QUANTITIES
4. TRAFFIC CONTROL PLAN
5. GENERAL PLAN & ELEVATION
6. CONCRETE REMOVAL
- 7~10. DETAILS & CROSS SECTIONS
11. TEMPORARY CONCRETE BARRIER

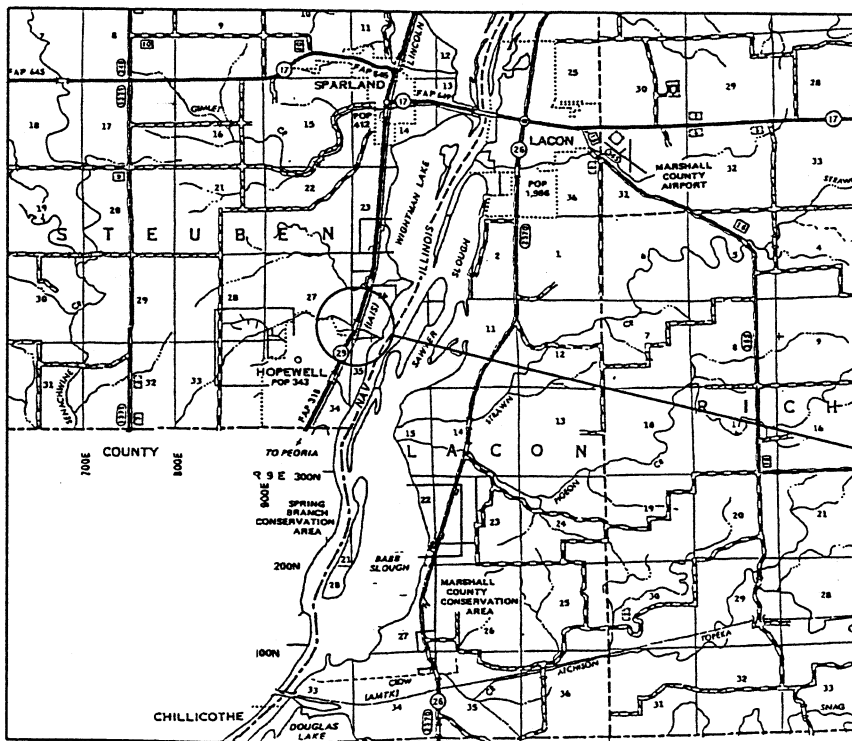
STANDARDS:

- | | |
|--------|--------|
| 701001 | 701321 |
| 701006 | 702001 |
| 701301 | 704001 |



FULL SIZE PLANS HAVE BEEN PREPARED USING STANDARD ENGINEERING SCALES. REDUCED SIZED PLANS WILL NOT CONFORM TO STANDARD SCALES. IN MAKING MEASUREMENTS ON REDUCED PLANS, THE ABOVE SCALES MAY BE USED.

J.U.L.I.E.
JOINT UTILITY LOCATION INFORMATION FOR EXCAVATION
1-800-892-0123



LOCATION MAP

REPAIR CONCRETE T-BEAM ON STRUCTURE CARRYING IL 29 OVER BARRVILLE CRK. (SN. 062-0008), 2 MILES S. OF SPARLAND.

STATE OF ILLINOIS
DEPARTMENT OF TRANSPORTATION
DIVISION OF HIGHWAYS

SUBMITTED *Aug 19 2005*

[Signature]
DISTRICT ENGINEER

ENGINEER OF DESIGN AND ENVIRONMENT

DIRECTOR, DIVISION OF HIGHWAYS

PRINTED BY THE AUTHORITY
OF THE STATE OF ILLINOIS

CONTRACT NO. DAY LABOR

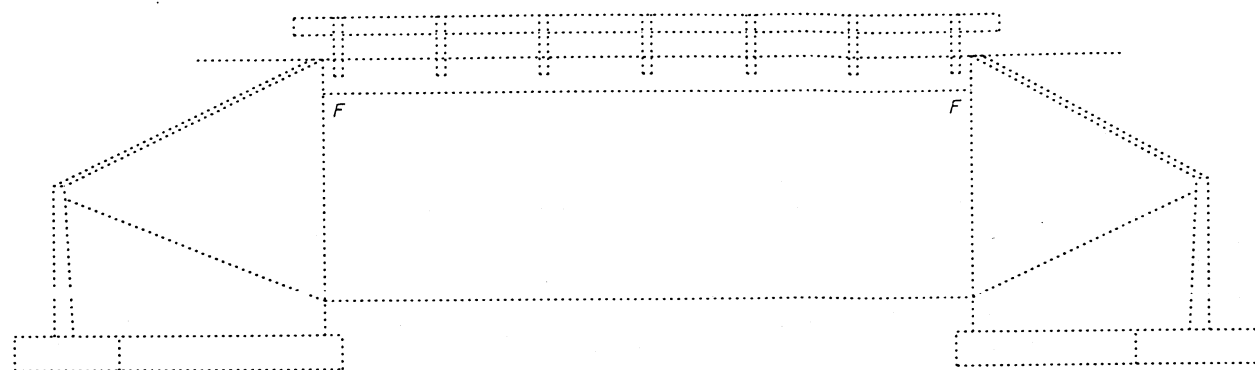
CATALOG NO. 032965-00D

STATE OF ILLINOIS
DEPARTMENT OF TRANSPORTATION

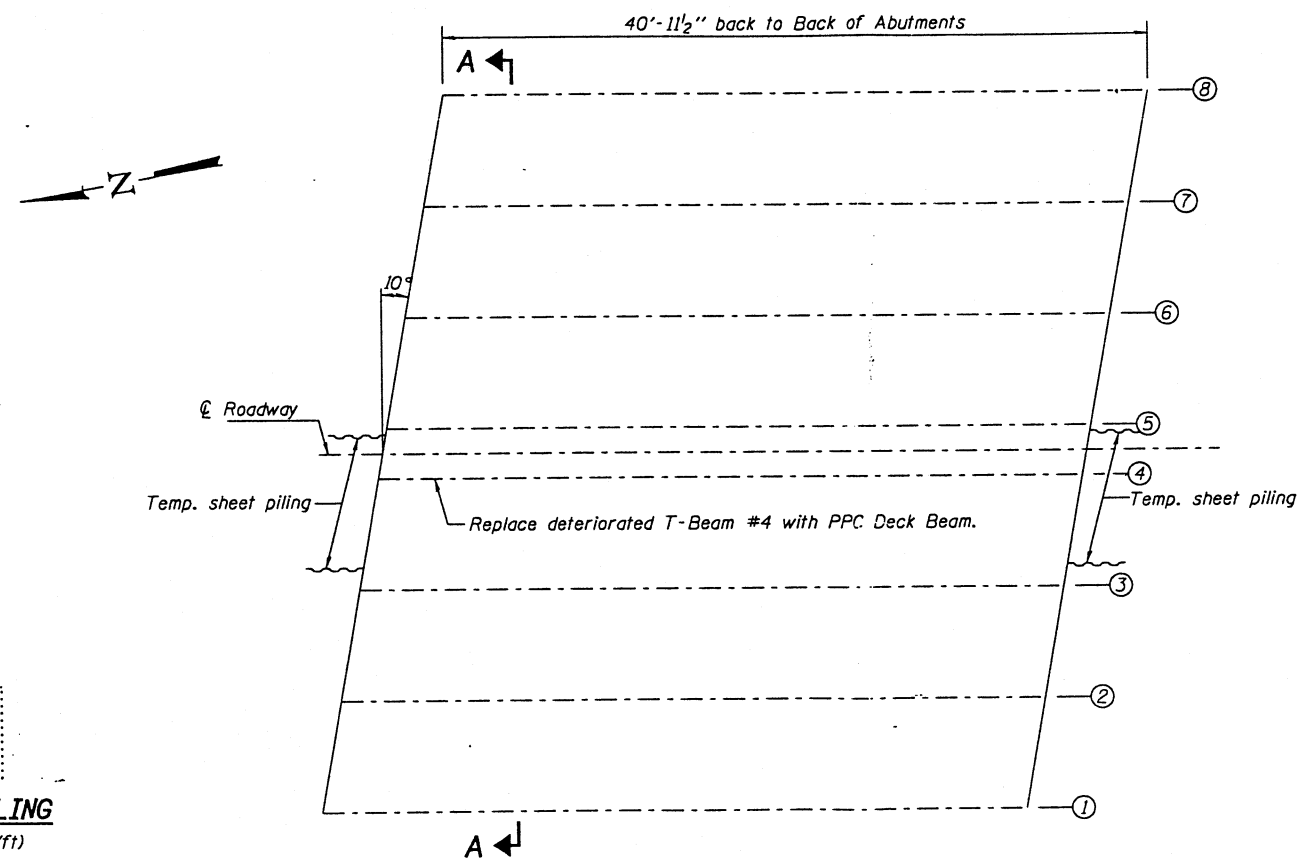
ROUTE NO.	SECTION	COUNTY	DATE	SHEET	SHEET NO. 1 7 SHEETS
			11	5	
FED. AID DIST. NO. 7	ALIGNED	FED. AID PROJECT			

GENERAL NOTES

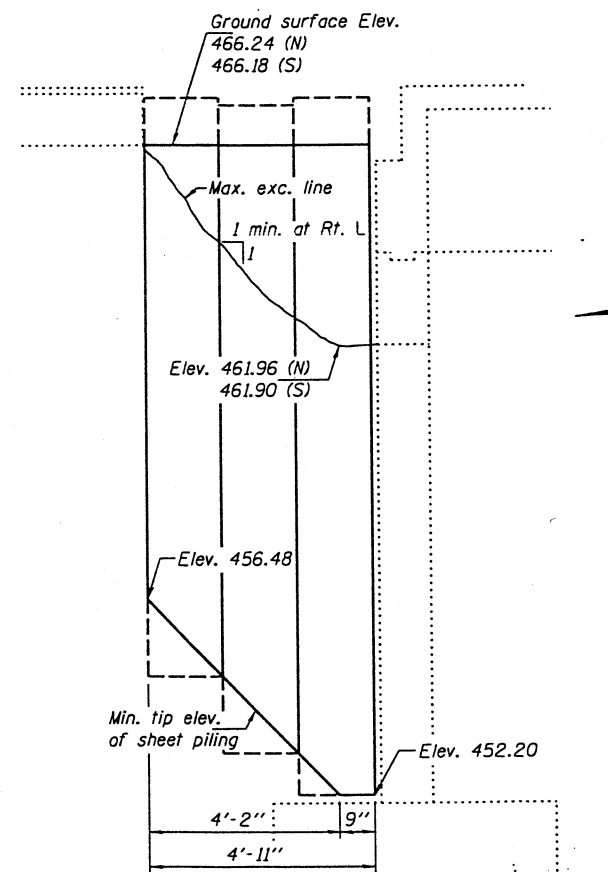
All Construction joints shall be bonded.
Reinforcement bars shall conform to the requirements of AASHTO M31 or M322, Grade 60.
Plan dimensions and details relative to existing structure have been taken from existing plans and are subject to nominal construction variations. It shall be the Contractor's responsibility to verify such dimensions and details in the field and make necessary approved adjustments prior to construction or ordering of materials. Such variations shall not be cause for additional compensation for a change in the scope of the work, however, the Contractor will be paid for the quantity actually furnished at the unit price bid for the work.
Existing reinforcement extending into the removal area shall be cleaned, straightened and incorporated into the new construction. Any reinforcement bars that are damaged during concrete removal shall be replaced with an approved bar splicer or anchorage system. Cost shall be included with Concrete Removal.
The back face of abutments shall be waterproofed according to Article 503.18 of the Standard Specifications.



ELEVATION

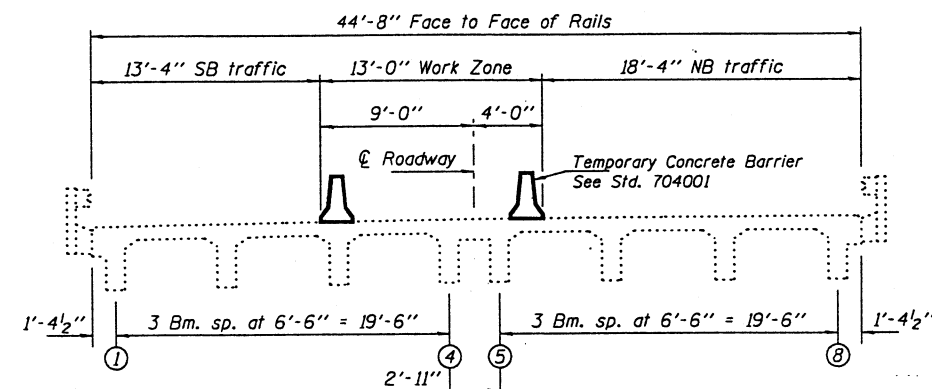


FRAMING PLAN



TEMPORARY SHEET PILING

(Min. Section Modulus = 1.9in³/ft)



SECTION A-A
Showing Traffic Layout

TOTAL BILL OF MATERIAL

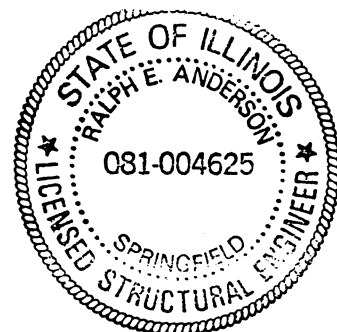
ITEM	UNIT	TOTAL
Bituminous Concrete Surface Removal	Sq. Yd.	4.7
Concrete Removal	Cu. Yd.	16.2
Structure Excavation	Cu. Yd.	6.1
Concrete Structures	Cu. Yd.	1.0
Concrete Superstructure	Cu. Yd.	8.0
Precast Prestressed Concrete Deck Beams (33" Depth)	Sq. Ft.	120
Reinforcement Bars, Epoxy Coated	Pound	2180
Temporary Sheet Piling	Sq. Ft.	239
Waterproofing Membrane System	Sq. Yd.	37
Mechanical Splice	Each	125
Bituminous Concrete Surface Course, Superpave, Mix "D", N90	Ton	4.9
Approach Slab Removal & Replacement	Sq. Yd.	8.4

DESIGN STRESSES

Prestress Units
f'c = 5000 psi
f'ci = 4000 psi
f's = 270,000 psi (1/2" low lax strands)
f'si = 201,960 psi (1/2" low lax strands)

GENERAL PLAN & ELEVATION
IL 29 over BARRVILLE CREEK
MARSHALL COUNTY
SN.062-0008

DESIGNED	PAUL JOHNSON	DATE	JUNE 2, 2005
CHECKED	JOHN A. MORRIS	EXAMINED	JOHN A. MORRIS
DRAWN	BALIVA	PASSED	RALPH E. ANDERSON
CHECKED	S.J.B.		

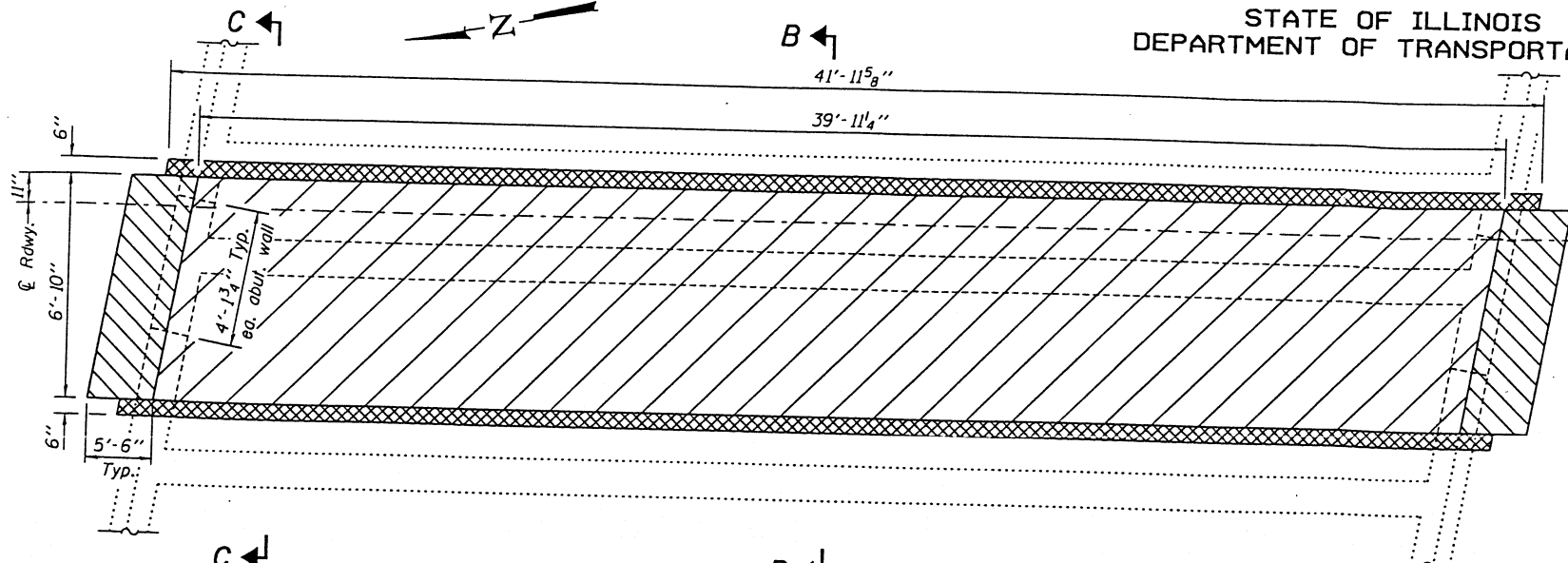


EXPIRES 11-30-2006

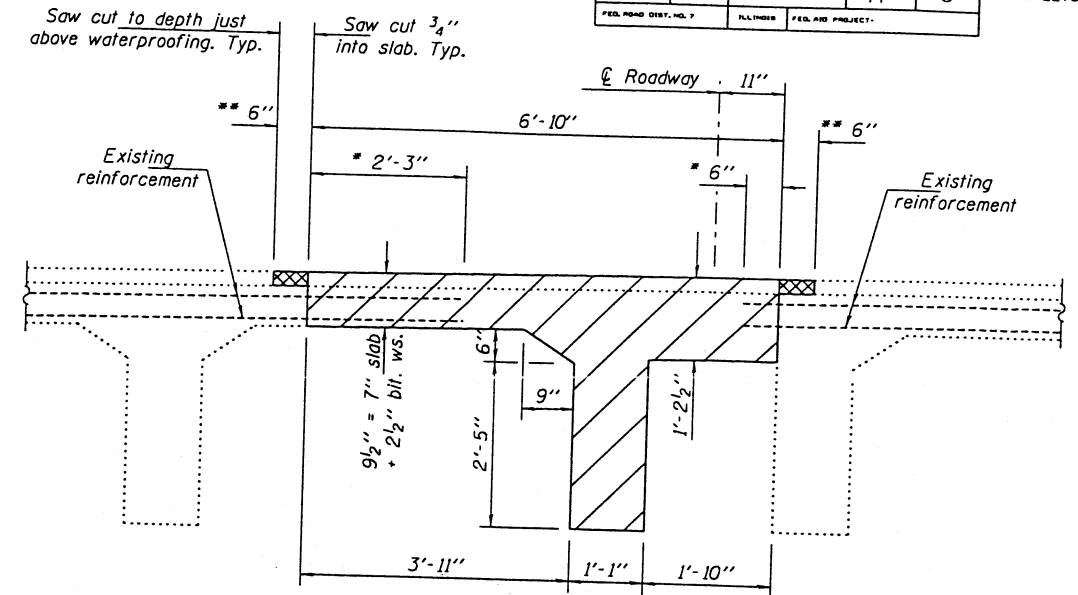
STATE OF ILLINOIS
DEPARTMENT OF TRANSPORTATION

ROUTE NO.	SECTION	COUNTY	DATE	SHEET
			11	6
FED. ROAD DIST. NO. 7		ALLIANCE	FED. AID PROJECT	

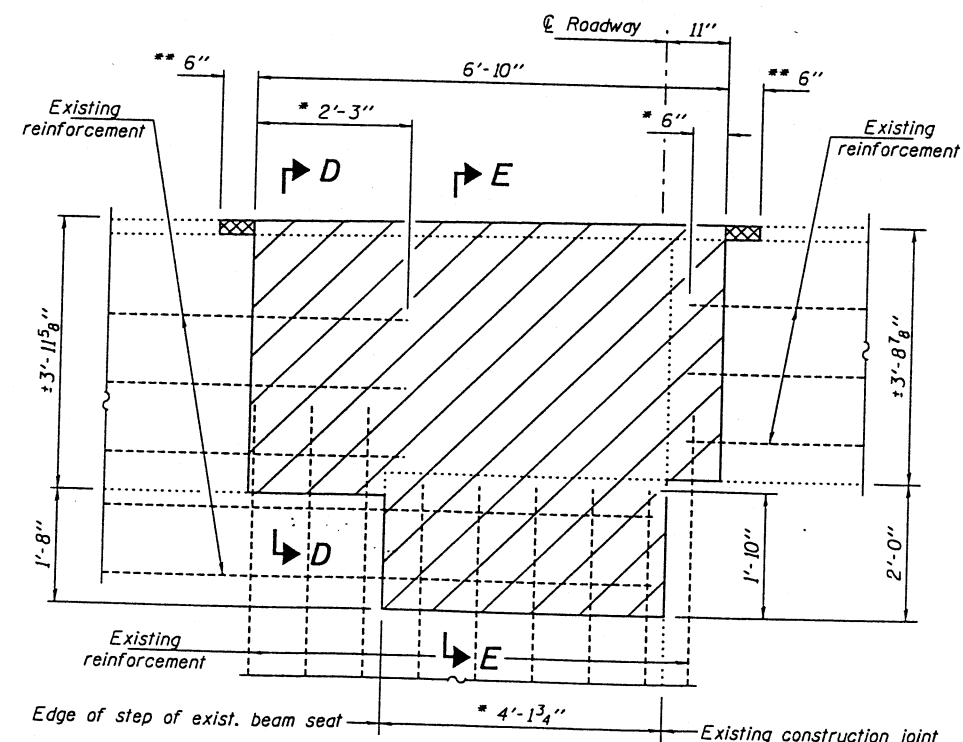
SHEET NO. 2
7 SHEETS



PLAN

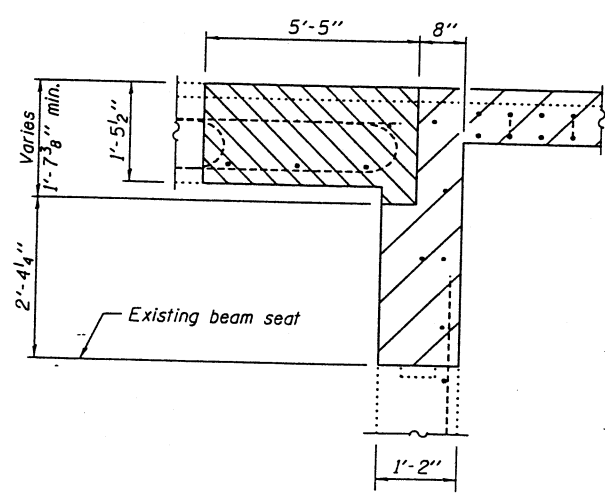


SECTION B-B



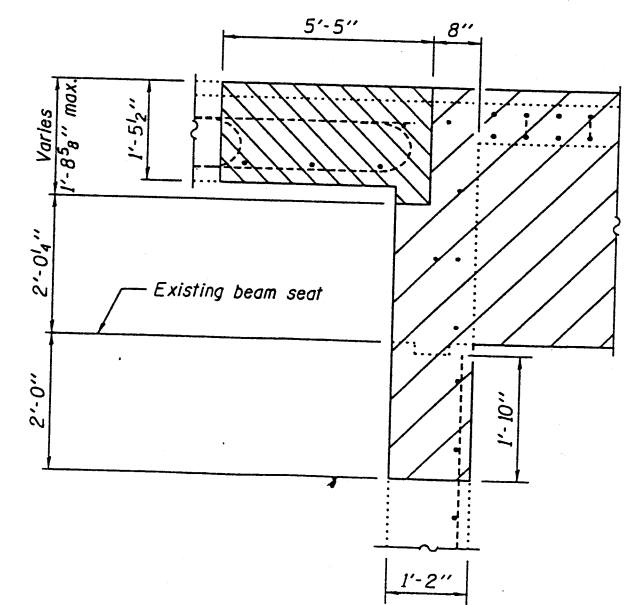
SECTION C-C

Beams omitted for clarity.



SECTION D-D

Dimensions are at Rt. Ls to abutment



SECTION E-E

Dimensions are at Rt. Ls to abutment

DESIGNED	PSJ
CHECKED	SJB
DRAWN	baliva
CHECKED	PSJ SJB

JUNE 2, 2005
EXAMINED *John A. Morris*
ENGINEER OF STRUCTURAL SERVICES
PASSED *Ralph E. Anderson*
ENGINEER OF BRIDGES AND STRUCTURES

Notes:
*All horizontal dimensions are at right angles to $\text{\textcircled{C}}$ Roadway, except those marked by an asterisk which are along the skew.
**Existing waterproofing to remain and to be lapped by new Waterproofing Membrane System.

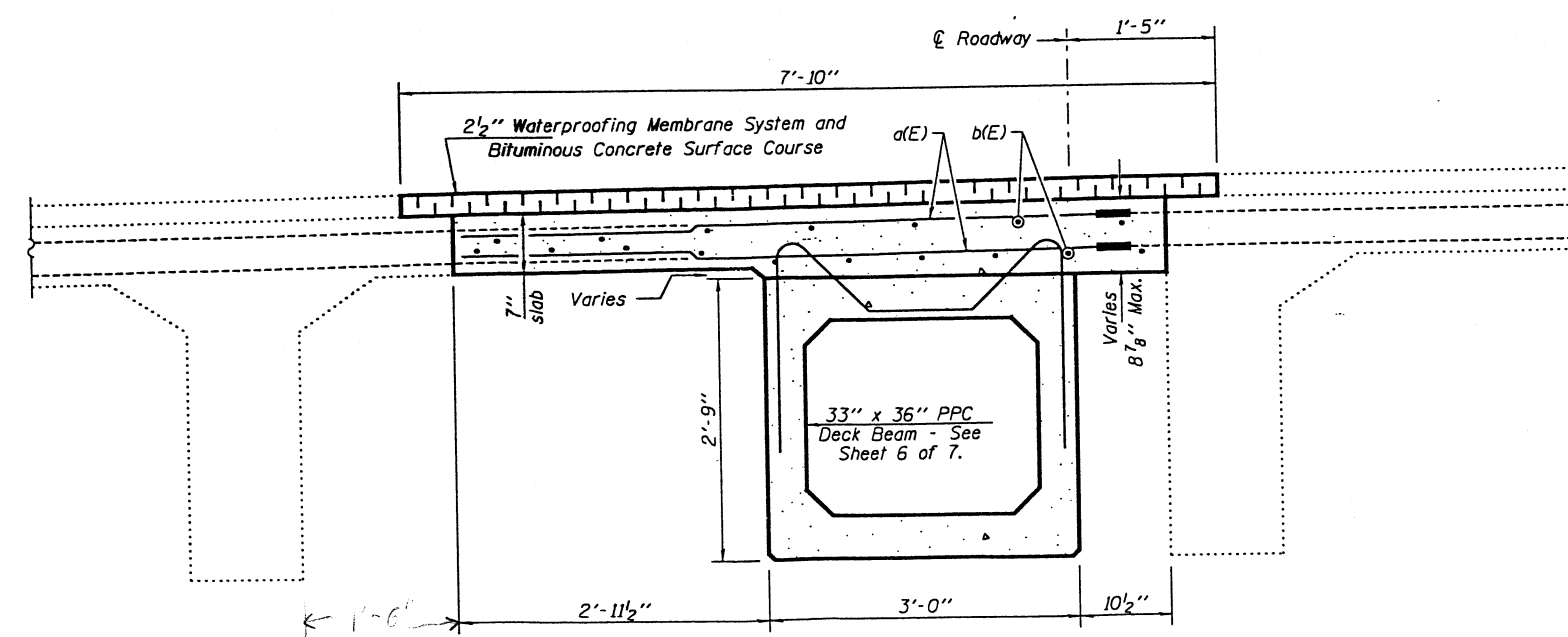
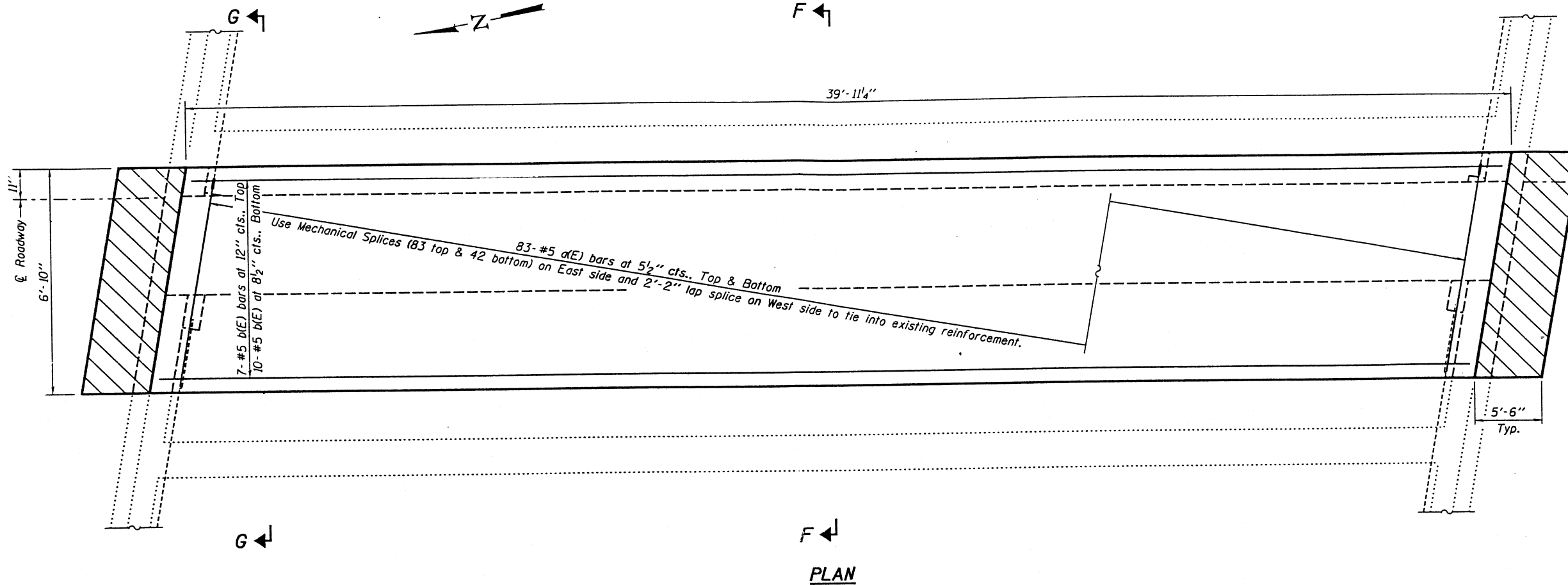
- Concrete Removal
- Approach Slab Removal & Replacement
- Bituminous Concrete Surface Removal

CONCRETE REMOVAL
IL 29 over BARRVILLE CREEK
MARSHALL COUNTY
SN 062-0008

STATE OF ILLINOIS
DEPARTMENT OF TRANSPORTATION

ROUTE NO.	SECTION	COUNTY	TOTAL SHEETS	SHEET NO.
			11	7
FED. ROAD DIST. NO. 7	ILLINOIS	FED. AID PROJECT		

SHEET NO. 3
7 SHEETS



Notes:
Hatched area indicates Approach Slab Removal and Replacement.
See Sheet 4 of 7 for Section G-G.

BILL OF MATERIAL

Bar	No.	Size	Length	Shape
a(E)	166	#5	6'-5\"	—
b(E)	17	#5	39'-6\"	—
Concrete Superstructure			Cu. Yd.	8.0
Reinforcement Bars, Epoxy Coated			Pound	1810

Reinforcement bars designated (E) shall be epoxy coated.

DECK DETAILS
IL 29 over BARRVILLE CREEK
MARSHALL COUNTY
SN 062-0008

DESIGNED	PSJ	EXAMINED	John A. Morris ENGINEER OF STRUCTURAL SERVICES
CHECKED	SJB	PASSED	Ralph E. Anderson ENGINEER OF BRIDGES AND STRUCTURES
DRAWN	baliva		
APPROVED	PSJ SJB		

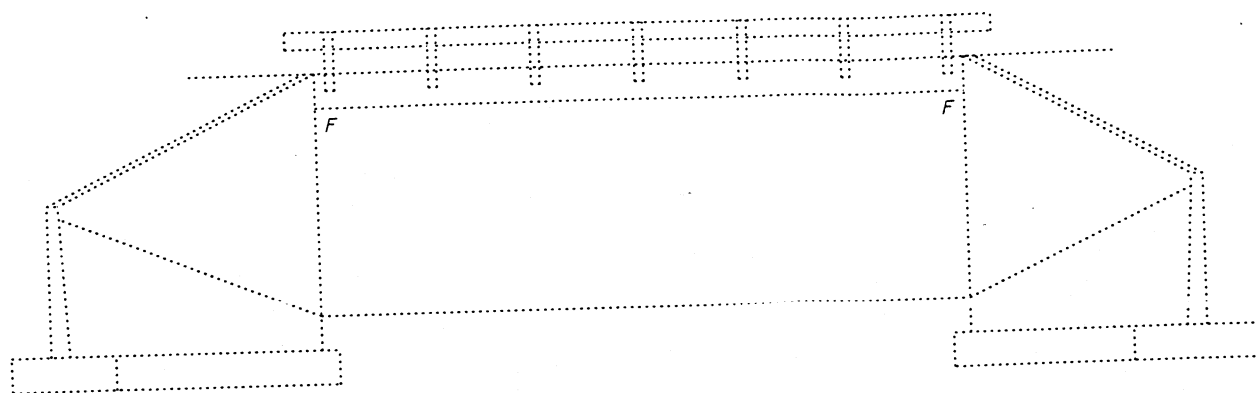
JUNE 2, 2005

STATE OF ILLINOIS
DEPARTMENT OF TRANSPORTATION

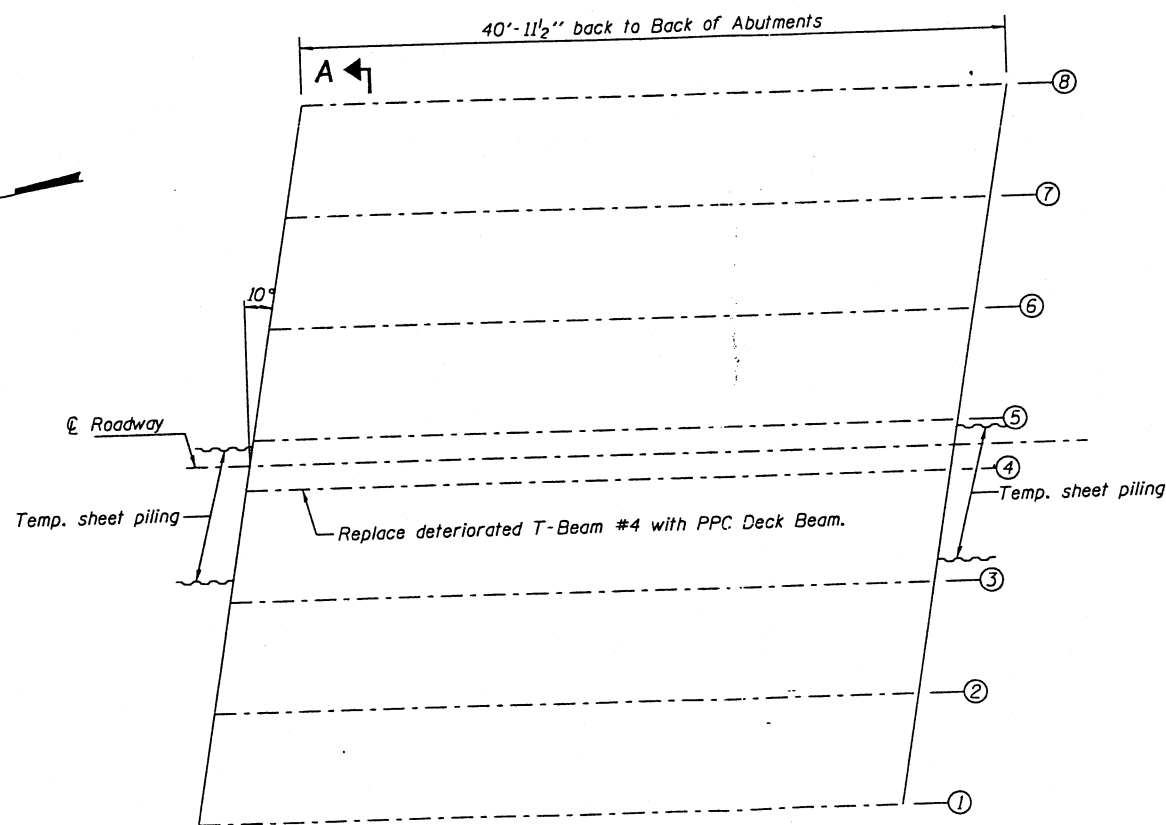
ROUTE NO.	SECTION	COUNTY	TOTAL SHEETS	SHEET NO.	SHEET NO. 1 7 SHEETS
			11	5	
FED. ROAD DIST. NO. 7	ILLINOIS	FED. AID PROJECT			

GENERAL NOTES

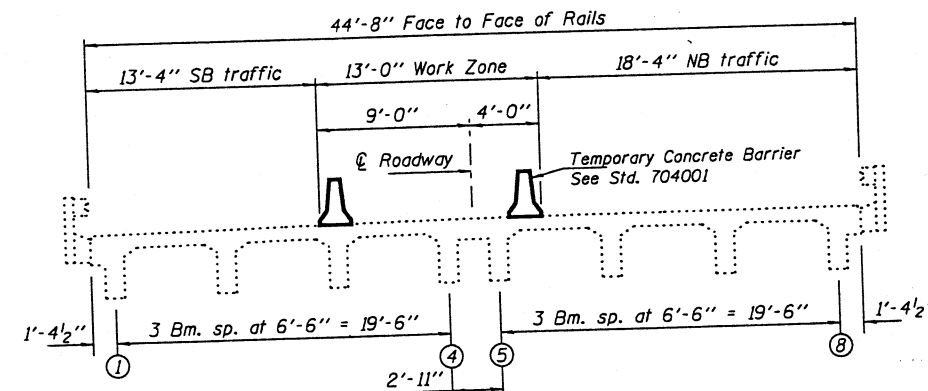
All Construction joints shall be bonded.
Reinforcement bars shall conform to the requirements of AASHTO M31 or M322, Grade 60.
Plan dimensions and details relative to existing structure have been taken from existing plans and are subject to nominal construction variations. It shall be the Contractor's responsibility to verify such dimensions and details in the field and make necessary approved adjustments prior to construction or ordering of materials. Such variations shall not be cause for additional compensation for a change in the scope of the work, however, the Contractor will be paid for the quantity actually furnished at the unit price bid for the work.
Existing reinforcement extending into the removal area shall be cleaned, straightened and incorporated into the new construction. Any reinforcement bars that are damaged during concrete removal shall be replaced with an approved bar splicer or anchorage system. Cost shall be included with Concrete Removal.
The back face of abutments shall be waterproofed according to Article 503.18 of the Standard Specifications.



ELEVATION



FRAMING PLAN



SECTION A-A
Showing Traffic Layout

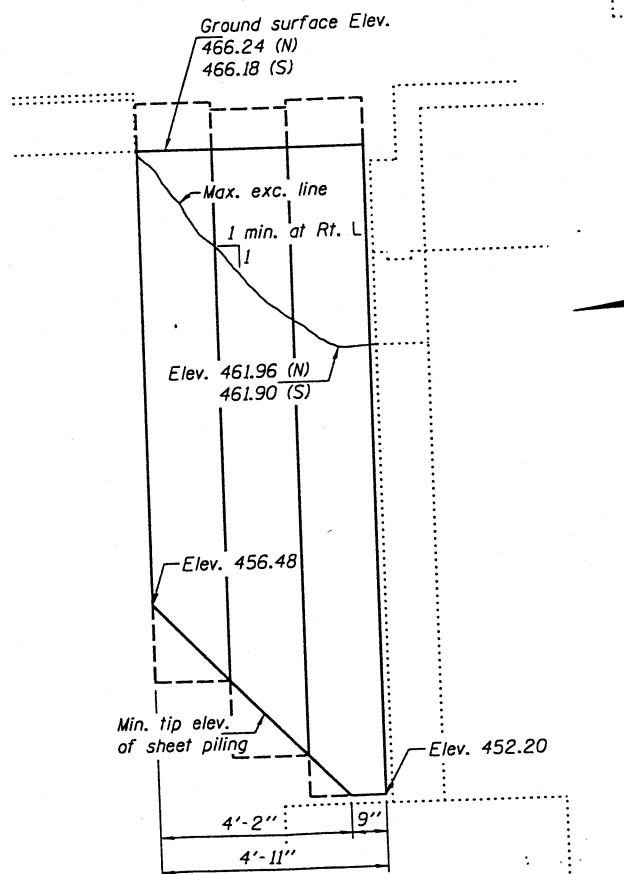
TOTAL BILL OF MATERIAL

ITEM	UNIT	TOTAL
Bituminous Concrete Surface Removal	Sq. Yd.	4.7
Concrete Removal	Cu. Yd.	16.2
Structure Excavation	Cu. Yd.	6.1
Concrete Structures	Cu. Yd.	1.0
Concrete Superstructure	Cu. Yd.	8.0
Precast Prestressed Concrete Deck Beams (33" Depth)	Sq. Ft.	120
Reinforcement Bars, Epoxy Coated	Pound	2180
Temporary Sheet Piling	Sq. Ft.	239
Waterproofing Membrane System	Sq. Yd.	37
Mechanical Splice	Each	125
Bituminous Concrete Surface Course, Superpave, Mix "D", N90	Ton	4.9
Approach Slab Removal & Replacement	Sq. Yd.	8.4

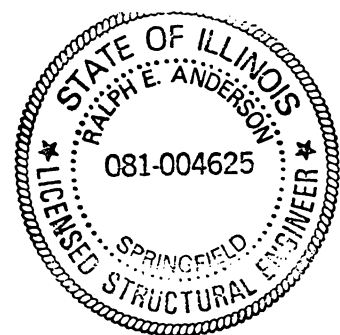
GENERAL PLAN & ELEVATION
IL 29 over BARRVILLE CREEK
MARSHALL COUNTY
SN 062-0008

DESIGN STRESSES

Prestress Units
f'c = 5000 psi
f'ci = 4000 psi
f's = 270,000 psi (1/2" low lax strands)
f'si = 201,960 psi (1/2" low lax strands)



TEMPORARY SHEET PILING
(Min. Section Modulus = 1.9in³/ft)



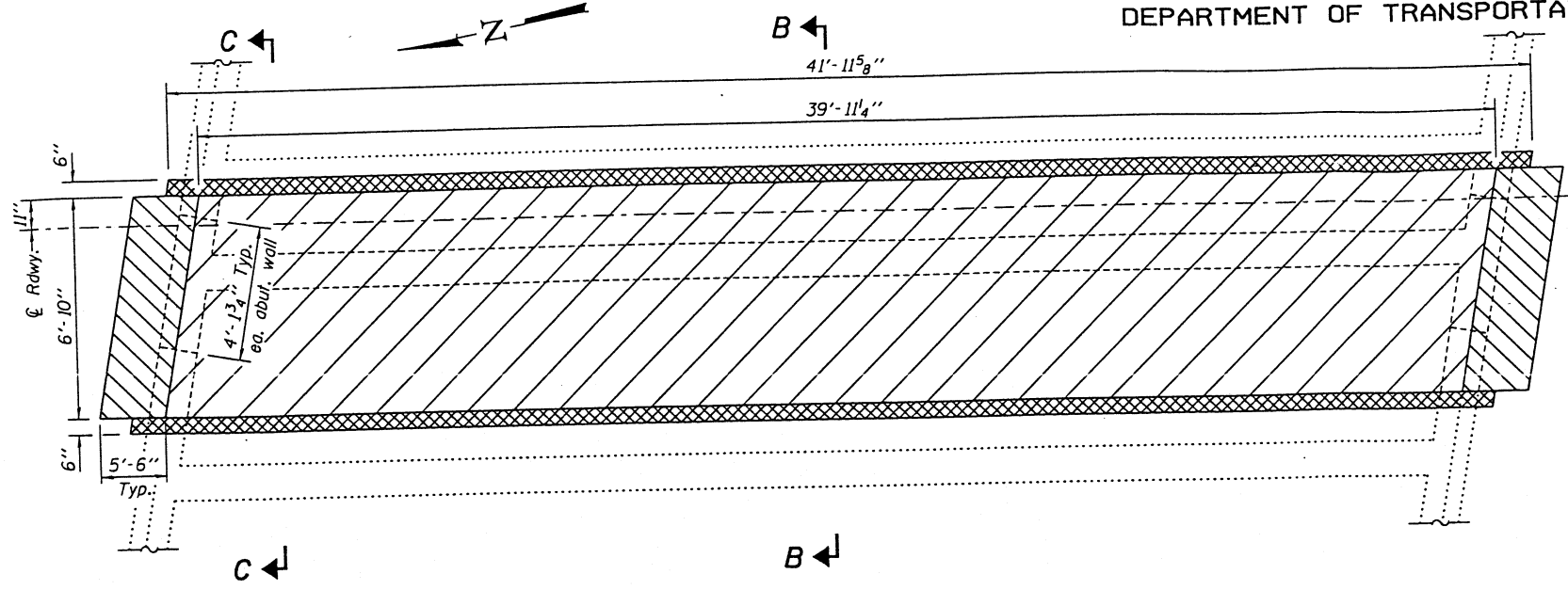
EXPIRES 11-30-2006

DESIGNED	PAUL Johnson	DATE	June 2, 2005
CHECKED	John A. Morris	EXAMINED	John A. Morris
DRAWN	baliva	PASSED	Ralph E. Anderson
CHECKED	S.J.B.		

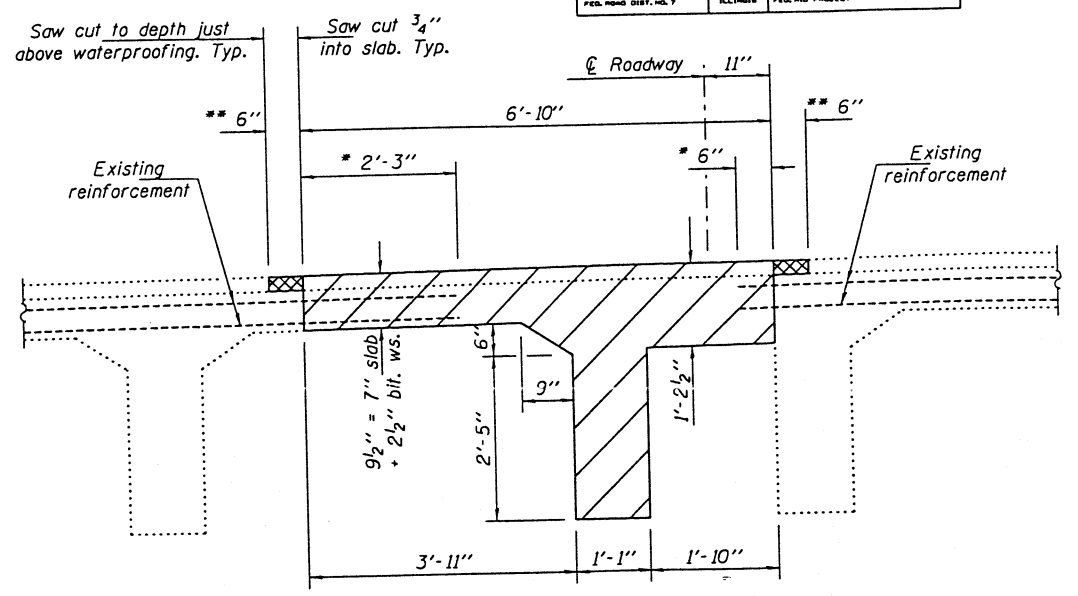
STATE OF ILLINOIS
DEPARTMENT OF TRANSPORTATION

ROUTE NO.	SECTION	COUNTY	TOTAL SHEETS	SHEET NO.
			11	6
FED. ROAD DIST. NO. 7			ALTIMER	FED. AID PROJECT

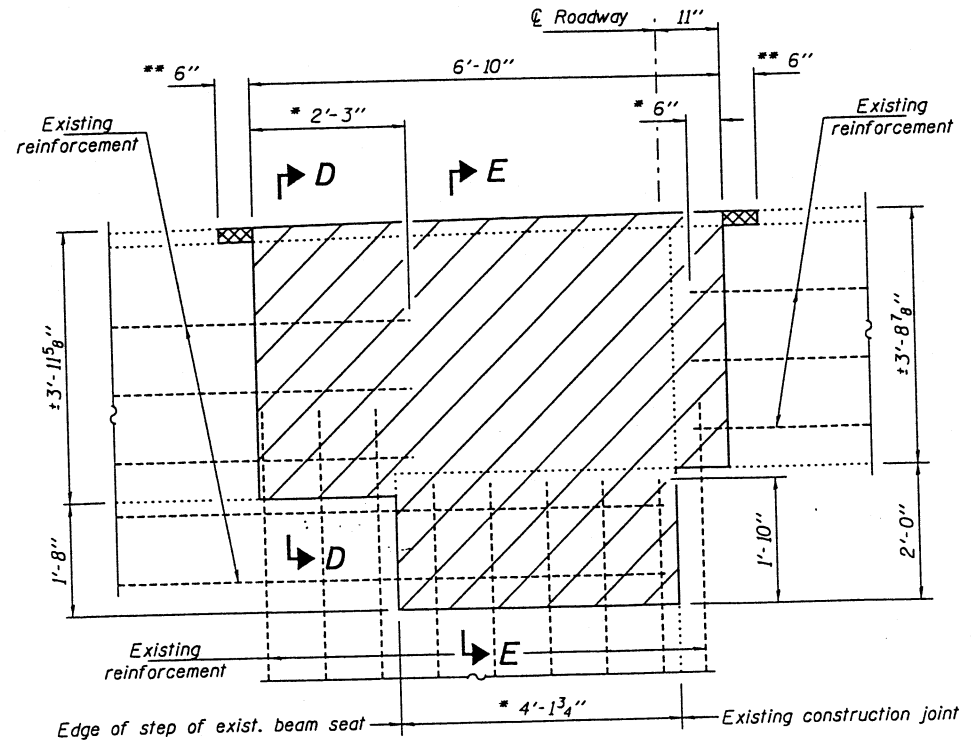
SHEET NO. 2
7 SHEETS



PLAN

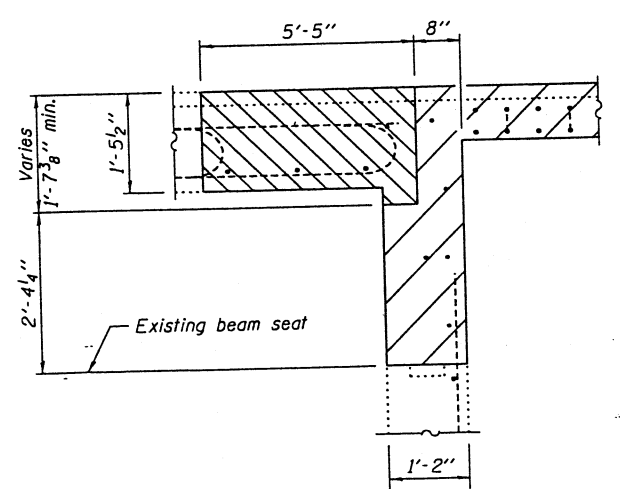


SECTION B-B



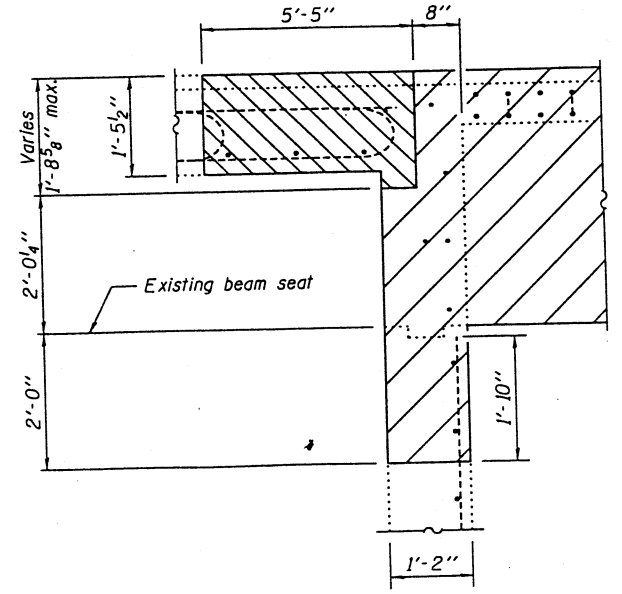
SECTION C-C

Beams omitted for clarity.



SECTION D-D

Dimensions are at Rt. Ls to abutment



SECTION E-E

Dimensions are at Rt. Ls to abutment

DESIGNED	PSJ
CHECKED	SJB
DRAWN	baliva
CHECKED	PSJ SJB

JUNE 2, 2005
EXAMINED *John A. Morris*
ENGINEER OF STRUCTURAL SERVICES
PASSED *Ralph E. Anderson*
ENGINEER OF BRIDGES AND STRUCTURES

Notes:
*All horizontal dimensions are at right angles to $\text{\textcircled{C}}$ Roadway, except those marked by an asterisk which are along the skew.
**Existing waterproofing to remain and to be lapped by new Waterproofing Membrane System.

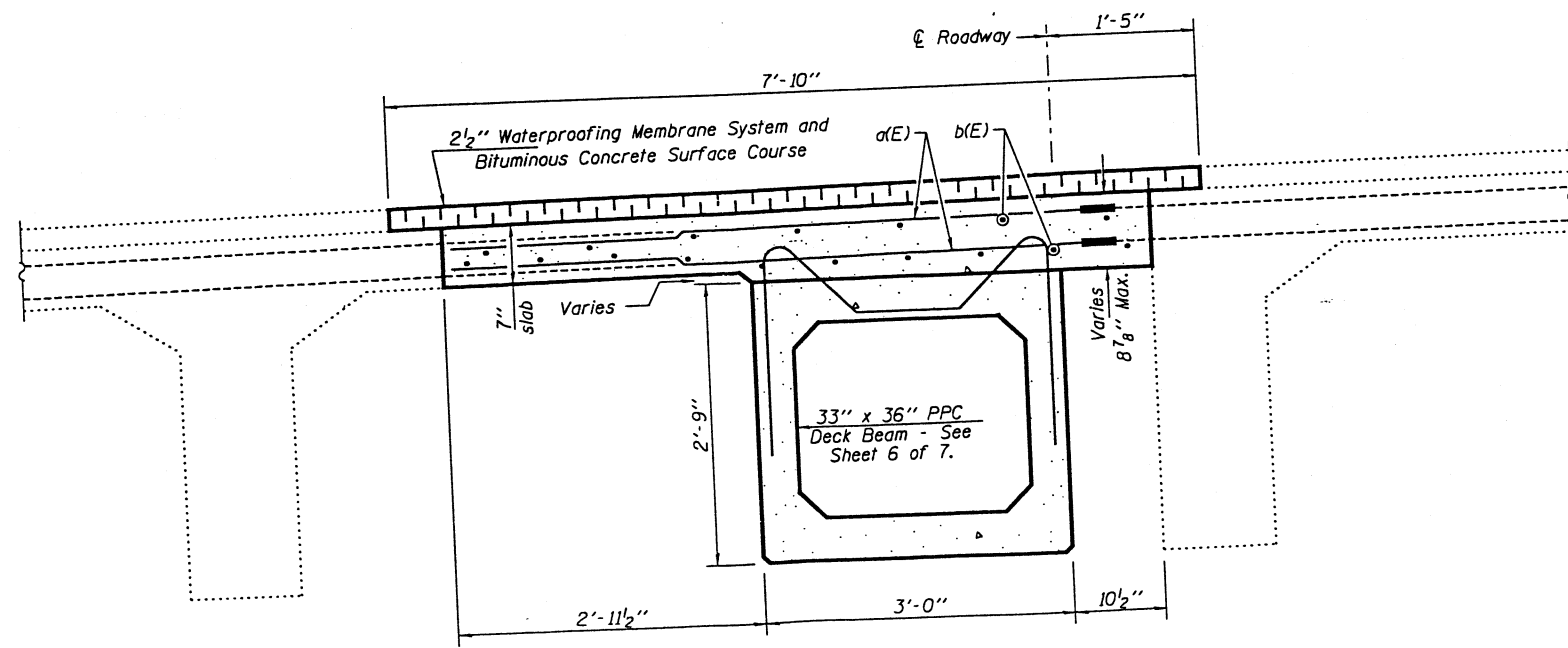
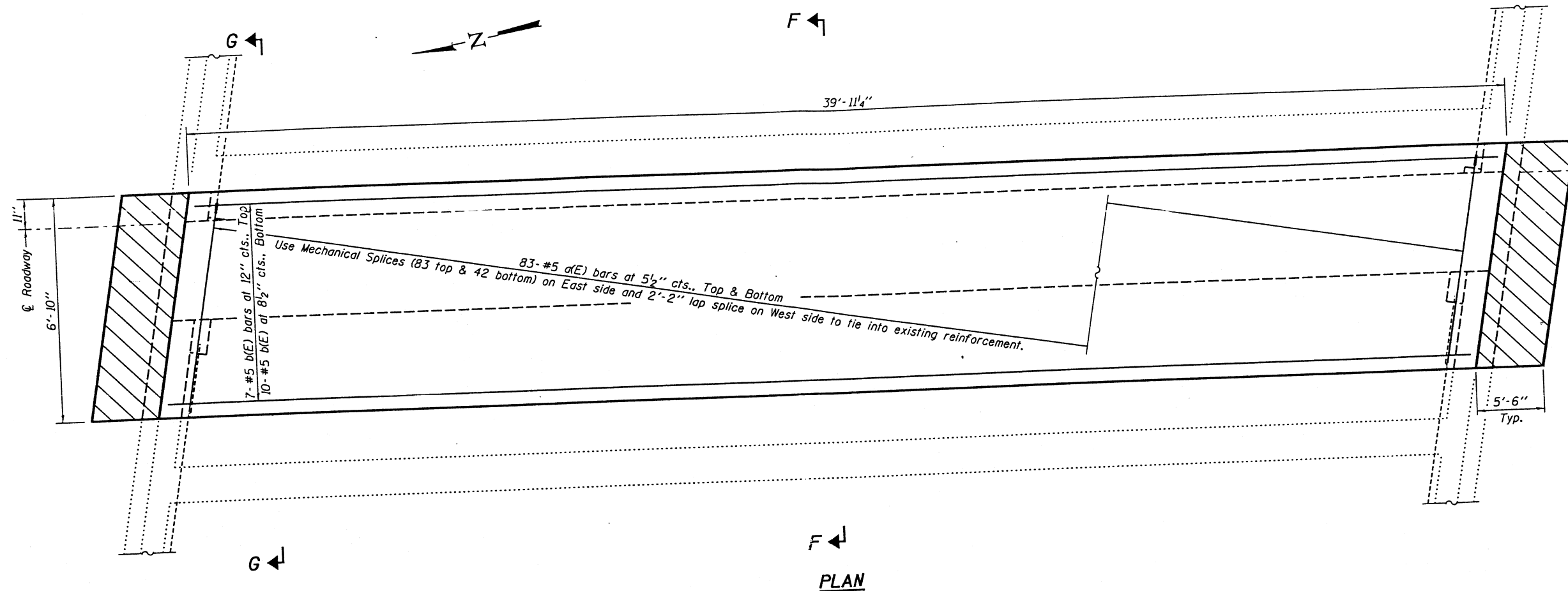
- Concrete Removal
- Approach Slab Removal & Replacement
- Bituminous Concrete Surface Removal

CONCRETE REMOVAL
IL 29 over BARRVILLE CREEK
MARSHALL COUNTY
SN-062-0008

STATE OF ILLINOIS
DEPARTMENT OF TRANSPORTATION

ROUTE NO.	SECTION	COUNTY	SHEET	SHEET
			11	7
FED. ROAD DIST. NO. 7	ILLINOIS	FED. AID PROJECT		

SHEET NO. 3
7 SHEETS



Notes:
Hatched area indicates Approach Slab Removal and Replacement.
See Sheet 4 of 7 for Section G-G.

BILL OF MATERIAL

Bar	No.	Size	Length	Shape
a(E)	166	#5	6'-5"	—
b(E)	17	#5	39'-6"	—
Concrete Superstructure			Cu. Yd.	8.0
Reinforcement Bars, Epoxy Coated			Pound	1810

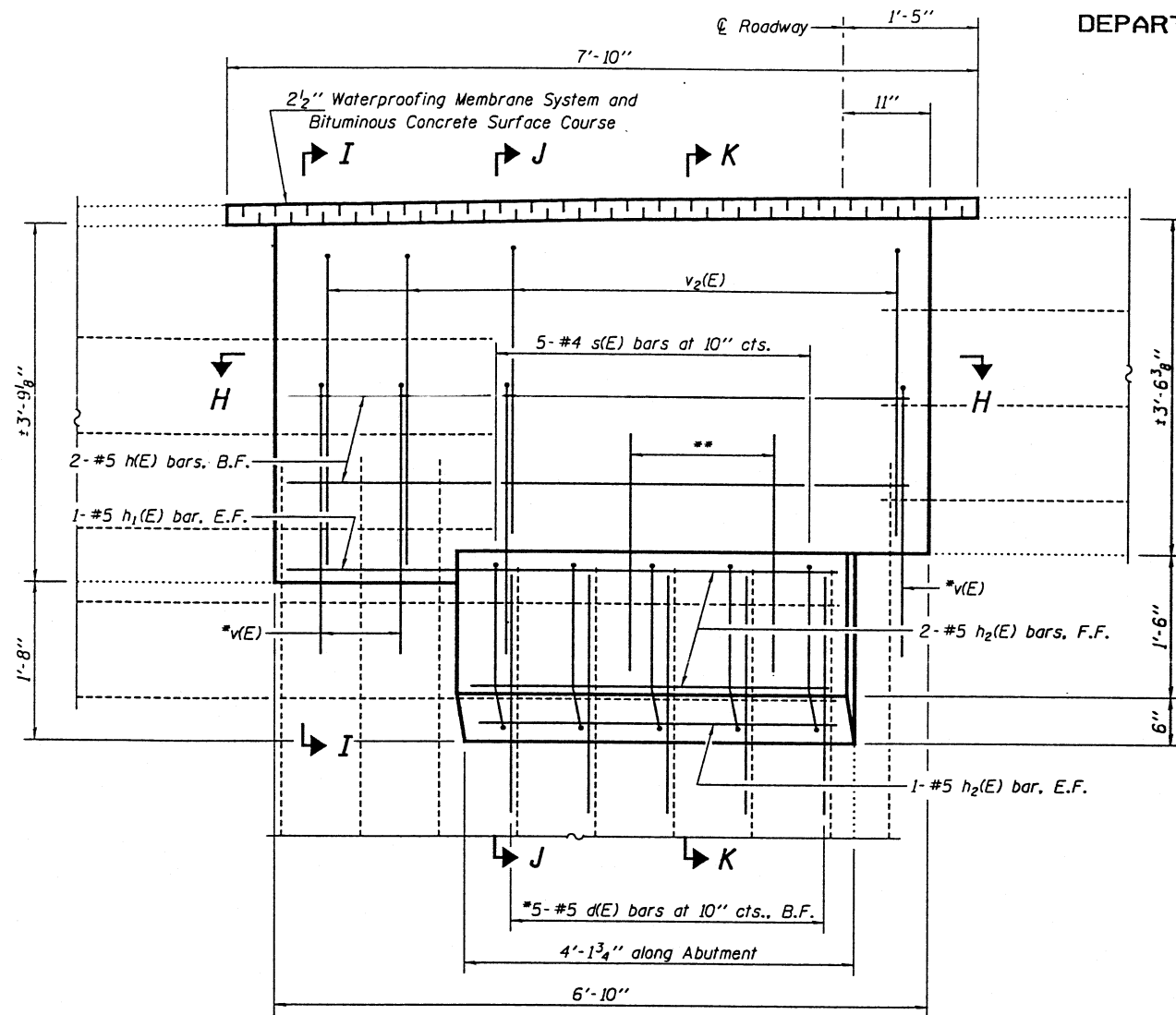
Reinforcement bars designated (E) shall be epoxy coated.

DECK DETAILS
IL 29 over BARRVILLE CREEK
MARSHALL COUNTY
SN 062-0008

DESIGNED	PSJ	JUNE 2, 2005
CHECKED	SJB	EXAMINED <i>John A. Morris</i> ENGINEER OF STRUCTURAL SERVICES
DRAWN	baliva	PASSED <i>Ralph E. Anderson</i> ENGINEER OF BRIDGES AND STRUCTURES
CHECKED	PSJ SJB	

STATE OF ILLINOIS
DEPARTMENT OF TRANSPORTATION

ROUTE NO.	SECTION	COUNTY	TOTAL SHEETS	SHEET NO.	SHEET NO. 4 7 SHEETS
			11	8	
FED. ROAD DIST. NO. 7	NUMBER	FED. ROAD PROJECT			



SECTION G-G
Beams omitted for clarity.

Notes:

See Sheet 5 of 7 for Sections I-I, J-J and K-K.

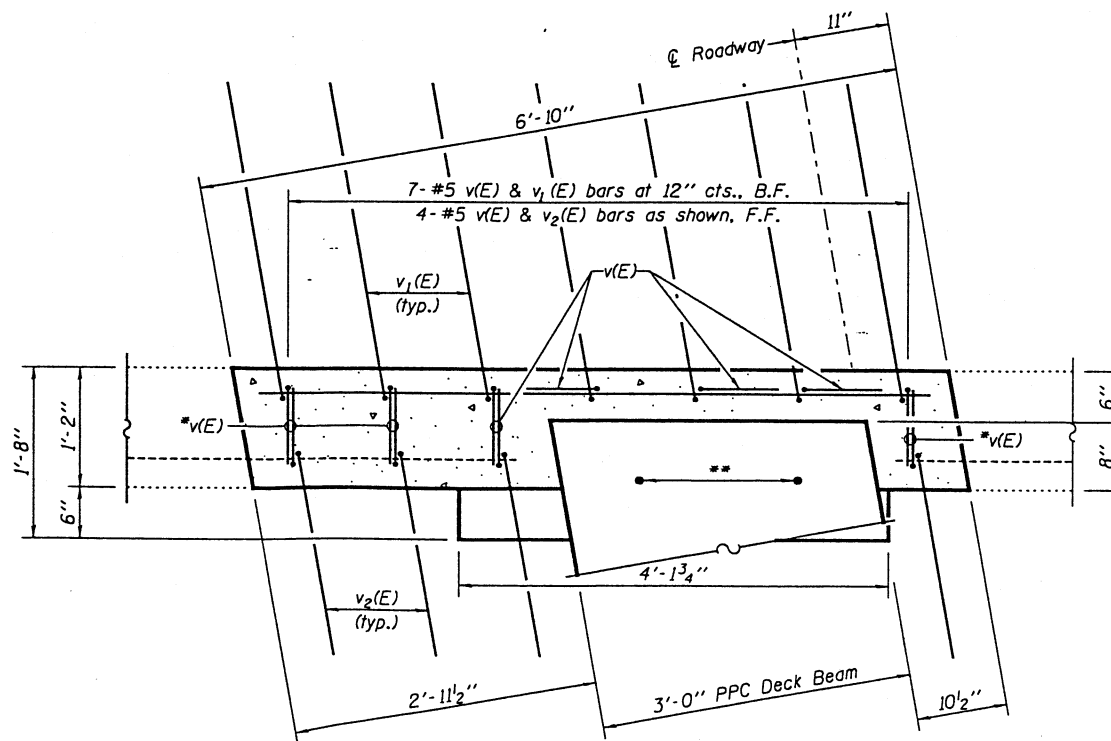
*Drill & grout bars in 9" min. deep holes and in accordance with Section 584 of the Standard Specifications.

**2-1" x 2'-6" dowel rods set in 1/2" x 1'-3" holes drilled into abutment seat after beam is erected. Holes to be filled with non-shrink grout to top of beam and grout allowed to cure min. 24 hrs. Cost of dowels, drilling & grouting included in PPC Deck Beams (33').

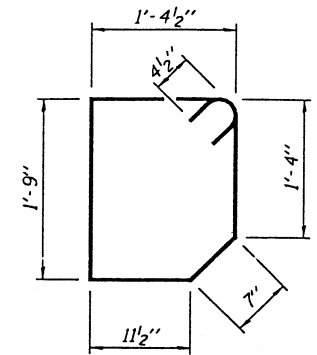
DESIGNED	PSJ
CHECKED	SJB
DRAWN	baliva
CHECKED	PSJ SJB

EXAMINED *John A. Morris*
ENGINEER OF STRUCTURAL SERVICES
PASSED *Ralph E. Anderson*
ENGINEER OF BRIDGES AND STRUCTURES

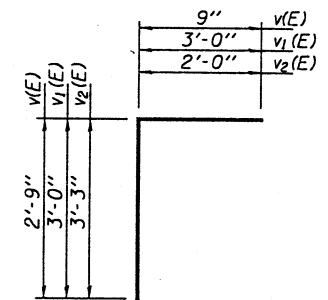
JUNE 2, 2005



SECTION H-H
North Abutment shown; South Abutment similar



BAR s(E)



BARS v(E), v1(E) & v2(E)

BILL OF MATERIAL

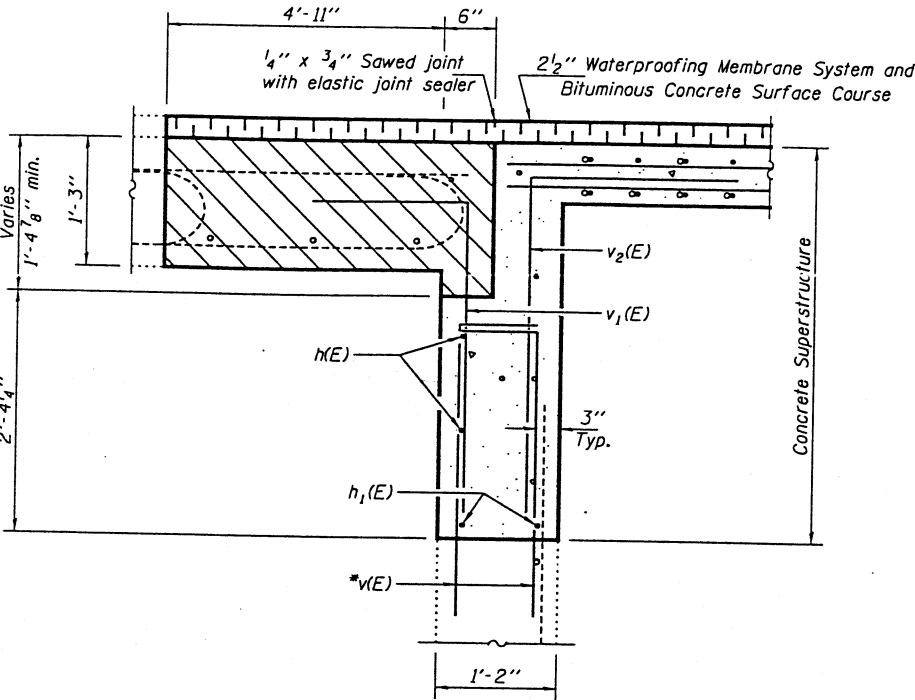
Bar	No.	Size	Length	Shape
d(E)	10	#5	2'-6"	—
h(E)	4	#5	6'-6"	—
h1(E)	4	#5	5'-9"	—
h2(E)	8	#5	3'-9"	—
s(E)	10	#4	6'-9"	D
v(E)	22	#5	3'-6"	┌
v1(E)	14	#5	6'-0"	┌
v2(E)	8	#5	5'-3"	┌
Concrete Structures			Cu. Yd.	1.0
Reinforcement Bars, Epoxy Coated			Pound	370

Reinforcement bars designated (E) shall be epoxy coated.

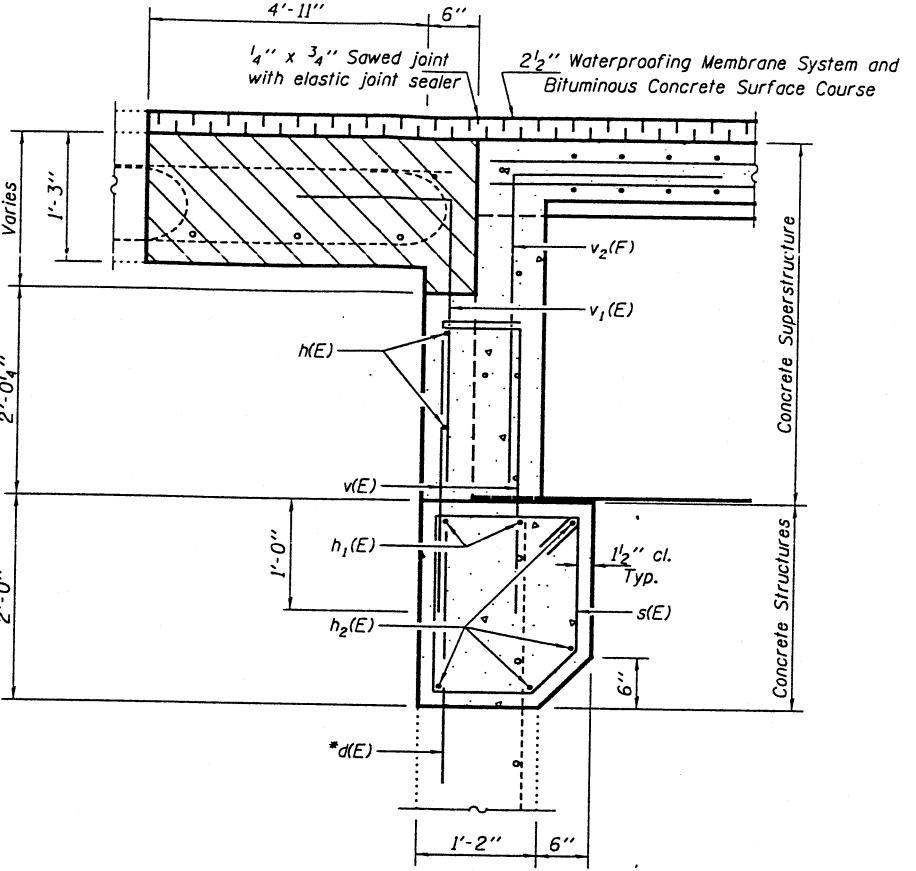
ABUTMENT & DIAPHRAGM DETAILS
IL 29 over BARRVILLE CREEK
MARSHALL COUNTY
SN 062-0008

STATE OF ILLINOIS
DEPARTMENT OF TRANSPORTATION

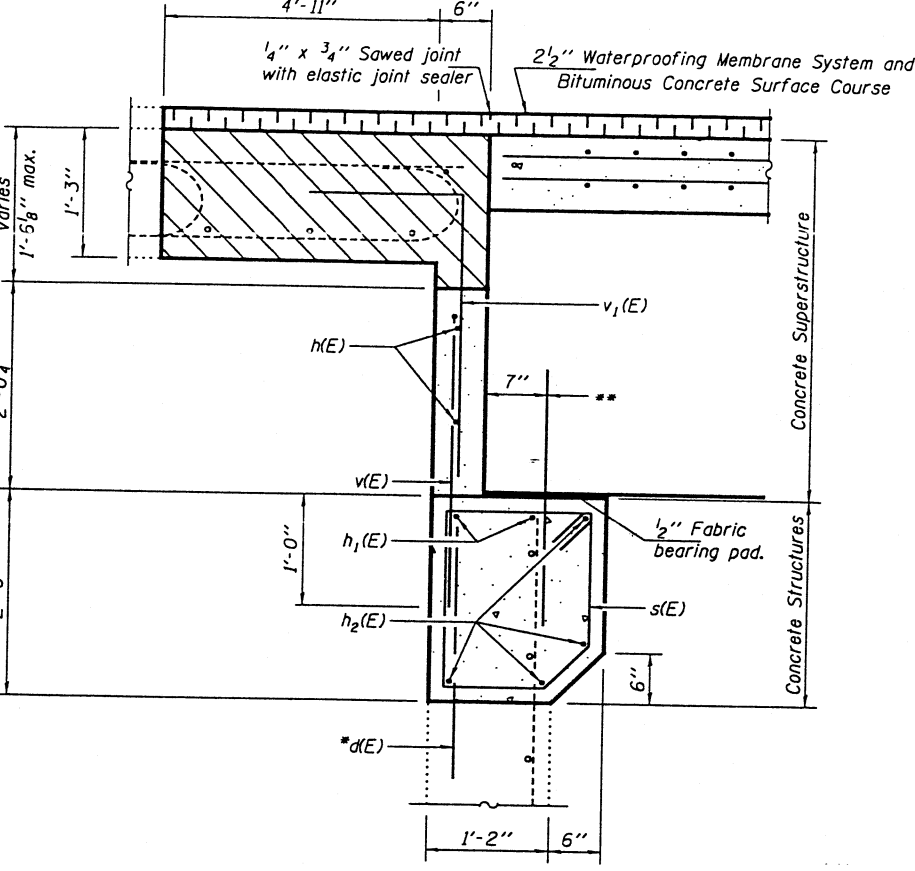
ROUTE NO.	SECTION	COUNTY	TOTAL SHEETS	SHEET NO.	SHEET NO. 5
			11	9	7 SHEETS
FED. ROAD DIST. NO. 7	ILLINOIS	FED. AID PROJECT			



SECTION I-I



SECTION J-J



SECTION K-K

Notes:
All horizontal dimensions are at Rt. Ls to abutment.
Hatched area indicates Approach Slab Removal and Replacement.
*Drill & grout bars in 9" min. deep holes and in accordance with Section 584 of the Standard Specifications.
**2-1" x 2'-6" dowel rods set in 1 1/2" x 1'-3" holes drilled into abutment seat after beam is erected. Holes to be filled with non-shrink grout to top of beam and grout allowed to cure min. 24 hrs. Cost of dowels, drilling & grouting included in PPC Deck Beams (33').

DESIGNED	PSJ
CHECKED	SJB
DRAWN	baliva
CHECKED	PSJ SJB

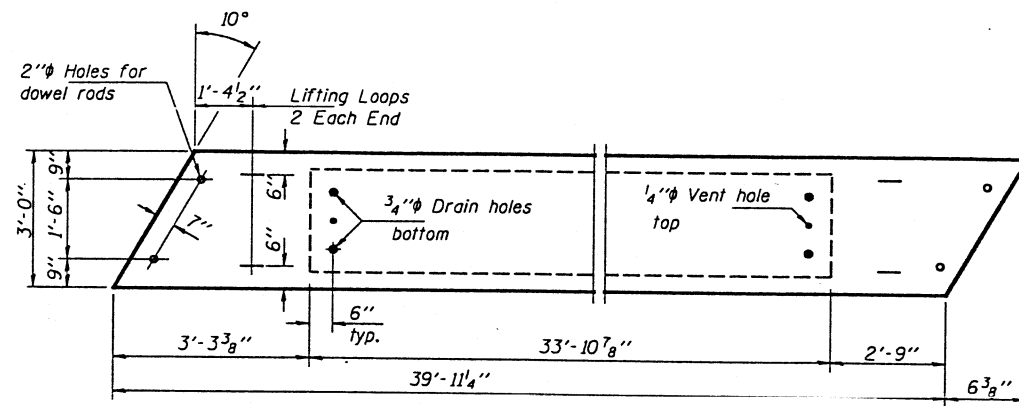
JUNE 2, 2005
EXAMINED *John A. Morris*
ENGINEER OF STRUCTURAL SERVICES
PASSED *Ralph E. Anderson*
ENGINEER OF BRIDGES AND STRUCTURES

ABUTMENT & DIAPHRAGM
CROSS SECTIONS
IL 29 over BARRVILLE CREEK
MARSHALL COUNTY
SN 062-0008

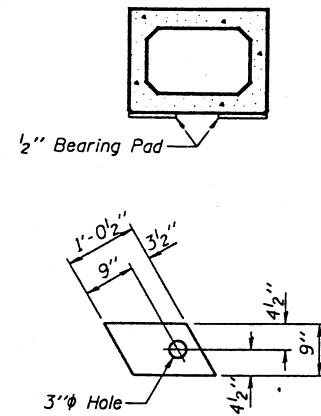
STATE OF ILLINOIS
DEPARTMENT OF TRANSPORTATION

ROUTE NO.	SECTION	COUNTY	SHEET NO.	SHEET NO.
			11	10
FED. ROAD DIST. NO. 7		ILLINOIS	FED. AID PROJECT	

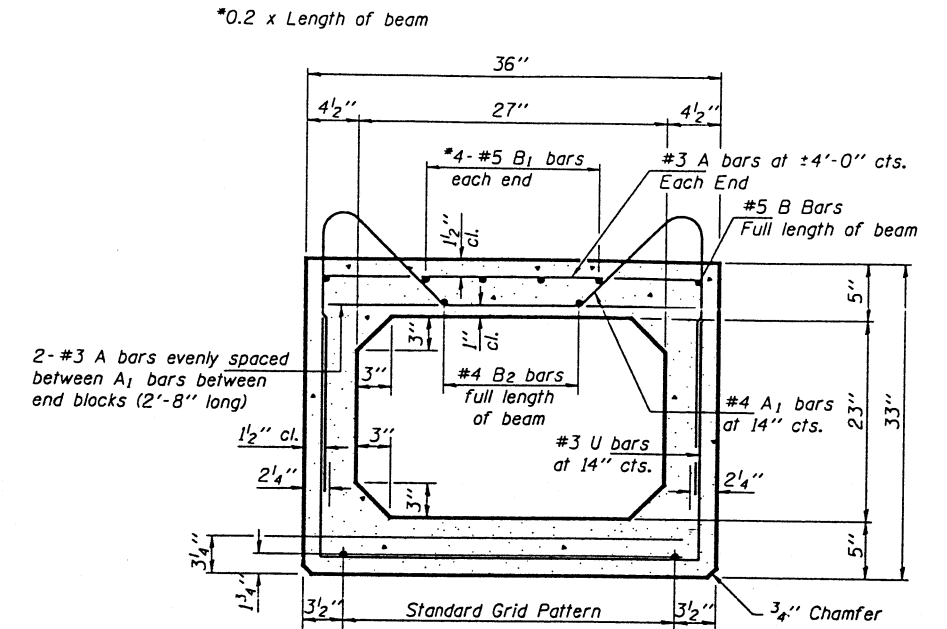
SHEET NO. 6
7 SHEETS



PLAN

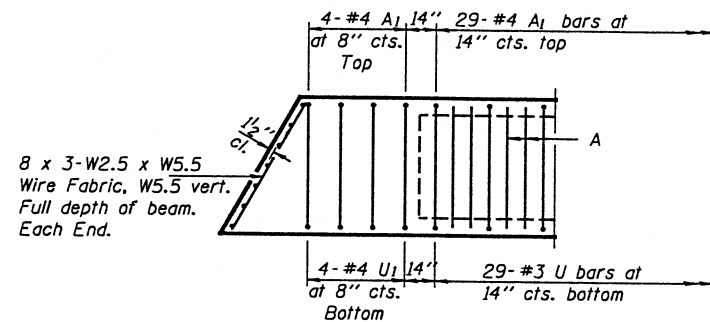


FABRIC BEARING PAD

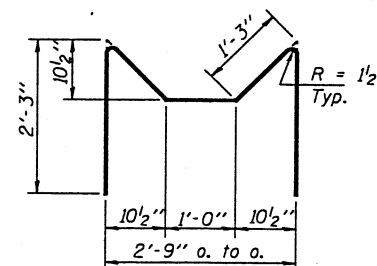


TYPICAL SECTION

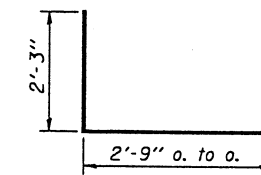
*0.2 x Length of beam
1/2" Strands, Each Strand Stressed to 30,900 Lbs.
9-Strands 1 3/4" up, 2-Strands 3/4" up
Place strands symmetrically about C of beam.



END PLAN



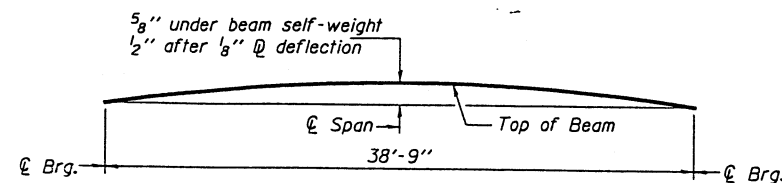
BAR A1



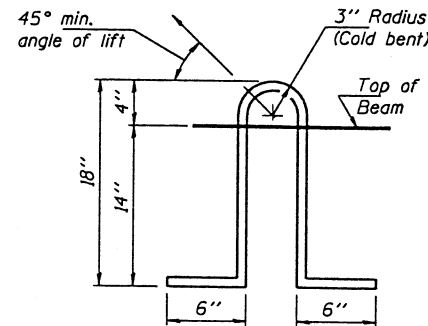
BARS U & U1

BILL OF MATERIAL

ITEM	UNIT	QTY.
Precast Prestressed Conc. Deck Bms. (33")	Sq. Ft.	120



ANTICIPATED CAMBER DIAGRAM



LIFTING LOOP DETAIL

NOTES

Prestressing steel shall be uncoated high strength, low relaxation 7-wire strand, Grade 270. The nominal diameter shall be 1/2" and the nominal cross-sectional area shall be 0.153 sq. in. Lifting loops shall be 2 - 1/2" #270 ksi strands, as shown. Non-prestressing steel shall conform to AASHTO M-31 or M-322, Grade 60. The bearing seat surfaces shall be adjusted by shimming to assure firm and even bearing. Two 1/8" fabric adjusting shims of the dimensions shown shall be provided for each bearing. Corrosion Inhibitor, as covered in the Special Provisions, shall be used in the concrete for precast prestressed concrete deck beams. Required Release Strength, f'ci, shall be 4000 psi.

DESIGNED	PSJ
CHECKED	SJB
DRAWN	baliva
CHECKED	PSJ SJB

JUNE 2, 2005
EXAMINED *John A. Morris*
ENGINEER OF STRUCTURAL SERVICES
PASSED *Ralph E. Anderson*
ENGINEER OF BRIDGES AND STRUCTURES

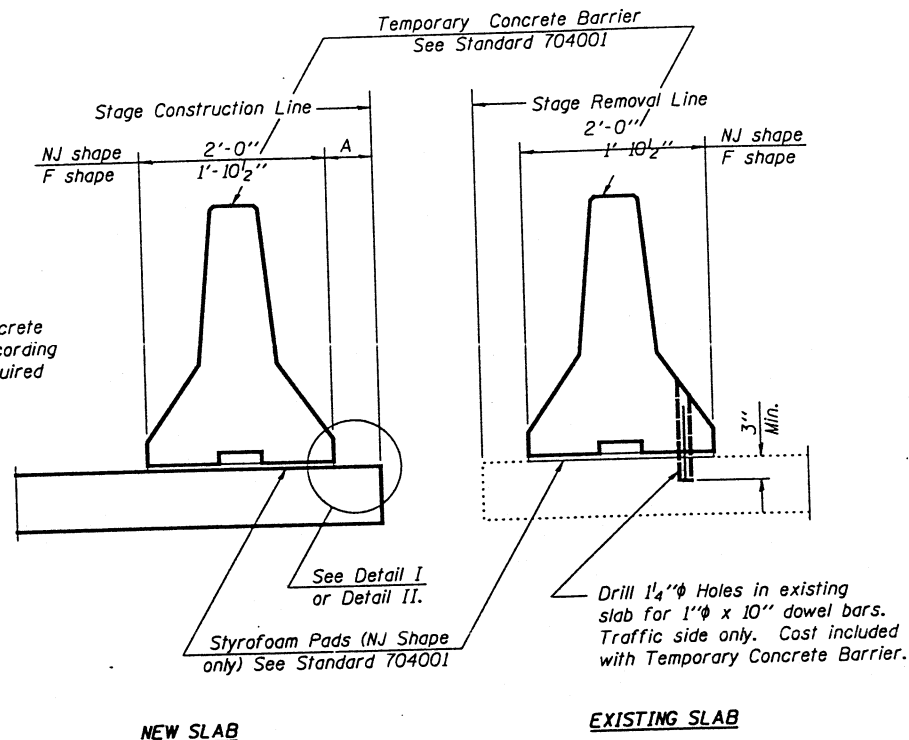
PPC DECK BEAM DETAILS
IL 29 over BARRVILLE CREEK
MARSHALL COUNTY
SN 062-0008

STATE OF ILLINOIS
DEPARTMENT OF TRANSPORTATION

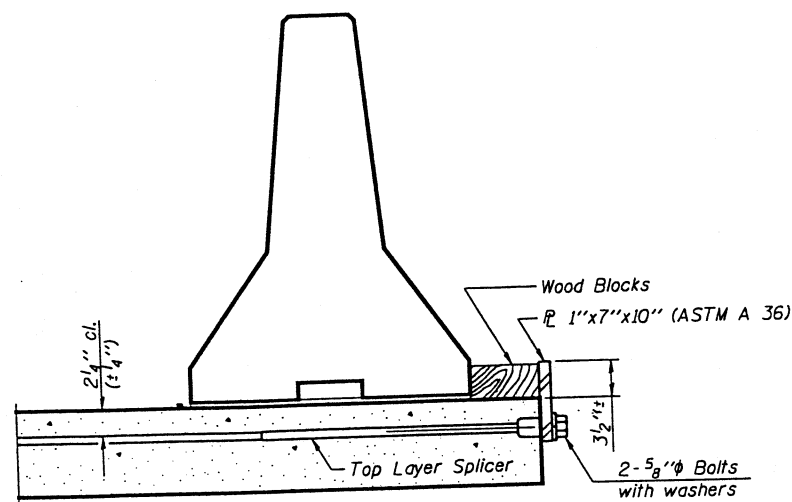
ROUTE NO.	SECTION	COUNTY	TOTAL SHEETS	SHEET NO.
			11	11
FED. ROAD DIST. NO. 7	ILLINOIS	FED. AID PROJECT		

SHEET NO. 7
7 SHEETS

When "A" is 3'-6" or less, the temporary concrete barrier shall be anchored to the new slab according to Detail I or Detail II. No anchorage is required when "A" is greater than 3'-6".

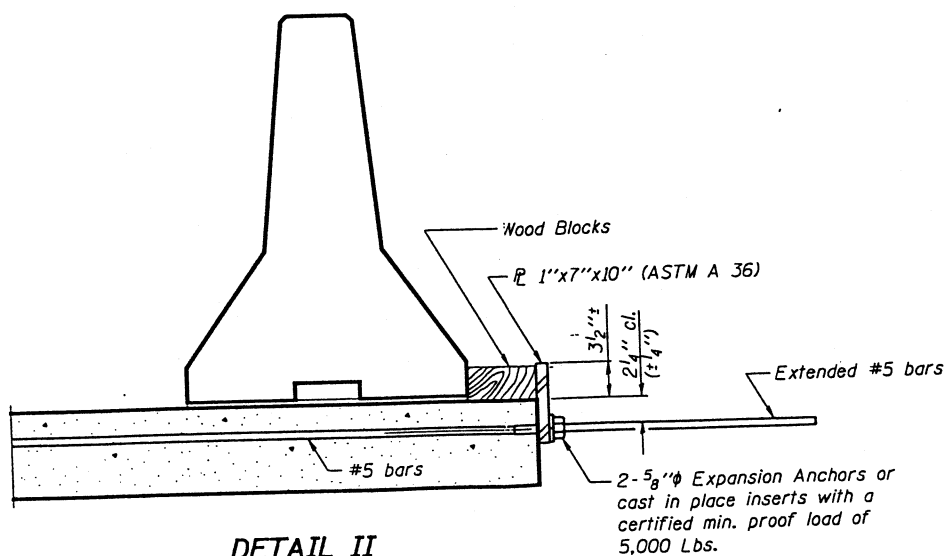


SECTIONS THRU SLAB



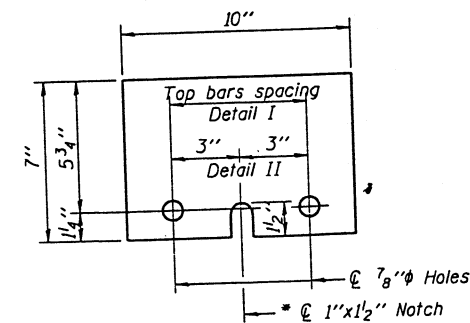
DETAIL I

The 1"x7"x10" Plate shall not be removed until Stage II Construction forms and reinforcement bars are in place.



DETAIL II

The 1"x7"x10" Plate shall not be removed until Stage II Construction forms and all reinforcement bars are in place and the concrete is ready to be placed.



P 1"x7"x10"

* Required only with Detail II

NOTES

- Detail I - With Bar Splicer or Couplers:
Connect one (1) 1"x7"x10" steel P to the top layer of couplers with 2-5/8" ϕ bolts screwed to coupler at approximate ϕ of each barrier panel.
- Detail II - With Extended Reinforcement Bars:
Connect one (1) 1"x7"x10" steel P to the concrete slab with 2-5/8" ϕ Expansion Anchors or cast in place inserts spaced between the top layer of reinforcement at approximate ϕ of each barrier panel.
- Cost of anchorage is included with Temporary Concrete Barrier.

DESIGNED	PSJ
CHECKED	SJB
DRAWN	baliva
CHECKED	PSJ SJB

JUNE 2, 2005
EXAMINED *John A. Morris*
ENGINEER OF STRUCTURAL SERVICES
PASSED *Ralph E. Anderson*
ENGINEER OF BRIDGES AND STRUCTURES

TEMPORARY CONCRETE BARRIER
IL 29 over BARRVILLE CREEK
MARSHALL COUNTY
SN 062-0008

149 MARSHALL
PEORIA

SEC. (3,4,5)W&RS-1; (3B)I; (4B)I; (4B)I-1;
& (5B)I-2

MAY 3, 1991 #149

STATE OF ILLINOIS
DEPARTMENT OF TRANSPORTATION
DIVISION OF HIGHWAYS

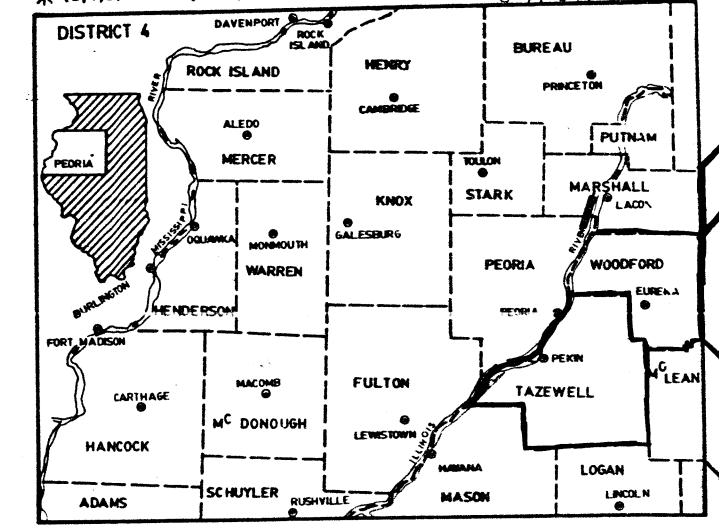
I & R

PLANS FOR PROPOSED
FEDERAL AID HIGHWAY

F.A. ROUTE 318 (OLD F.A. 63)(ILL 29)
SECTION (3,4,5)W&RS-1; (3B)I; (4B)I; (4B)I-1; AND (5B)I-2
PEORIA AND MARSHALL COUNTIES
C-94-363-89

PROJECT F-318 (1)

F.A. RTE.	SECTION	COUNTY	TOTAL SHEETS	SHEET NO.
318	*	PEORIA/MARSHALL	223	1
F.H.W.A. REG. 4		ILLINOIS	PROJECT F-318(1)	



D-94-047-89

INDEX OF SHEETS

- 1 COVER SHEET
- 2-7 TYPICAL SECTIONS
- 8-12 SUMMARY OF QUANTITIES
- 13 GENERAL NOTES, LEGEND, LINE DIAGRAM
- 14-24 SCHEDULES OF QUANTITIES NOT OTHERWISE SHOWN
- 25-27 CLASS X CONCRETE, CULVERT AND STORM SEWER SCHEDULE
- 28-48 PLAN SHEETS
- 49-50 VILLAGE OF HOPEWELL INTERSECTION DETAILS
- 51-52 YANKFF I ANE INTERSECTION DETAILS
- 53 SPECIAL ENTRANCE LT. STATION 1452+50 DETAILS
- 54 RIVERSIDE MATERIALS ENTRANCE DETAILS
- 55 SPECIAL ENTRANCE MARKING DETAILS
- 56 REST AREA RESURFACING DETAILS
- 57 STATE FISH AND WILDLIFE AREA ENTRANCE DETAILS
- 58-73D SPECIAL DETAILS
- 74-84 SPECIAL HEADWALLS, BOX CULVERT EXTENSIONS, DROP STRUCTURES AND SPECIAL GRATE DETAILS
- 85-85C TEMPORARY RUNAROUNDS
- 86-90 BRIDGE PLANS SECTION 3-B.
- 91-93 BRIDGE PLANS SECTION 4B-I
- 94-103 BRIDGE PLANS SECTION (4B) I-1
- 104-135A BRIDGE PLANS SECTION (5B) I-2
- 136-146 RETAINING WALL PLANS
- 147-223 CROSS SECTIONS
- 223A-223M MISCELLANEOUS CROSS SECTIONS NEAR CROSS ROAD CULVERTS

96%
5-15-93

PROJECT ENGINEER: J. B. ABBOTT

DESIGNER: W. H. SCHWEICKERT

- ① INCLUDES 16A
- ② INCLUDES 58A

ANY REFERENCE TO A STANDARD IN THESE PLANS SHALL BE INTERPRETED TO MEAN THE EDITION AS INDICATED BY THE COPY OF THE STANDARD INCLUDED IN THESE PLANS.

LIST OF STANDARDS

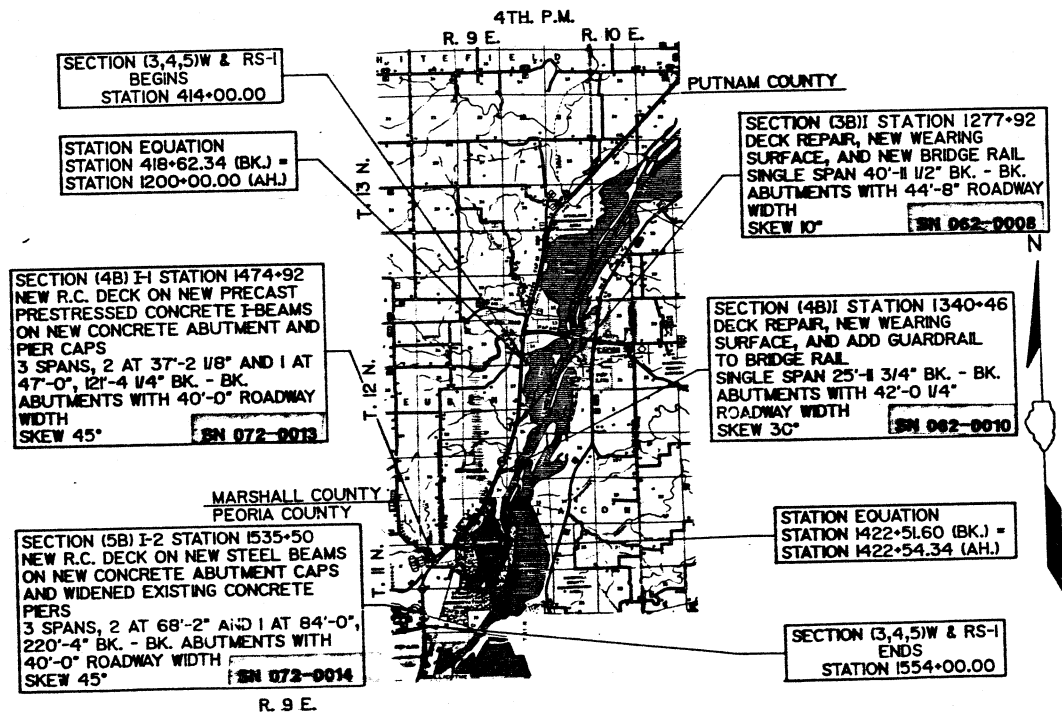
1527-9	2223-3	2308-5	2396
1683-4	2228-4	2311-6	2421
1686-4	2230-10	2312-6	2427-1
1792-6	2262-4	2324-7	BLR 20-1
1998-1	2298-6	2336-4	BLR 21-2
2051-1	2299-11	2341-3	
2113-2	2300-3	2349	
2122-13	2301-5	2354-1	
2130-10	2302-5	2362-3	
2213-4	2305-5	2381	
2218-3	2306-6	2382-2	
2220-3	2307-6	2383-1	

DESIGN DESIGNATION
1,012 (11) MAJOR 5.51 (B-20)

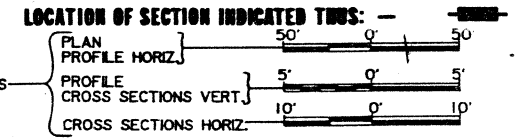
SURVEY BOOK NOS. 2588A

062-0008

CONTRACT NO. 88152

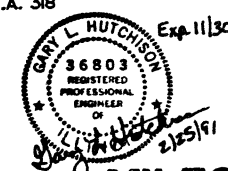


NOTE: METHOD 1 BRIDGE DECK REPAIR SHALL BE USED ON SECTION (3B)I AND SECTION (4B)I BRIDGES.



DESCRIPTION OF WORK
THE WORK INCLUDED IN SECTION (3,4,5)W&RS-1 CONSISTS OF BITUMINOUS WIDENING AND BITUMINOUS CONCRETE RESURFACING F.A. ROUTE 318 (ILL. 29) IN AREAS WITHOUT A CENTERLINE SHFT. THE EXISTING PAVEMENT WILL BE WIDENED A FULL LANE WIDTH ON THE EAST SIDE OF THE PAVEMENT. OTHER WORK ITEMS INCLUDE TREE REMOVAL, GRANULAR SUBGRADE, EMBANKMENT WIDENING, EARTH SLOPE REINFORCEMENT WITH GEOTECHNICAL FABRIC, GUTTER CONSTRUCTION, CULVERTS AND CULVERT EXTENSIONS, GUARD RAIL, SEEDING, PAVEMENT MARKING, THE CONSTRUCTION OF A TIED BACK RETAINING WALL, AND OTHER MISCELLANEOUS ITEMS.
ALSO, THE CONTRACT INCLUDES FOUR BRIDGE SECTIONS DESCRIBED ELSEWHERE ON THIS SHEET.

WHEREVER F.A. 63 IS SHOWN, IT SHALL BE CONSTRUED TO MEAN F.A. 318



STATE OF ILLINOIS
DEPARTMENT OF TRANSPORTATION
DIVISION OF HIGHWAYS

SUBMITTED: 3/8/91
D. E. Higgins
EXAMINED: 3-26-91
Ray D. Gould
PASSED: 3-29-91
APPROVED: 3-29-91
Ralph C. Wilson

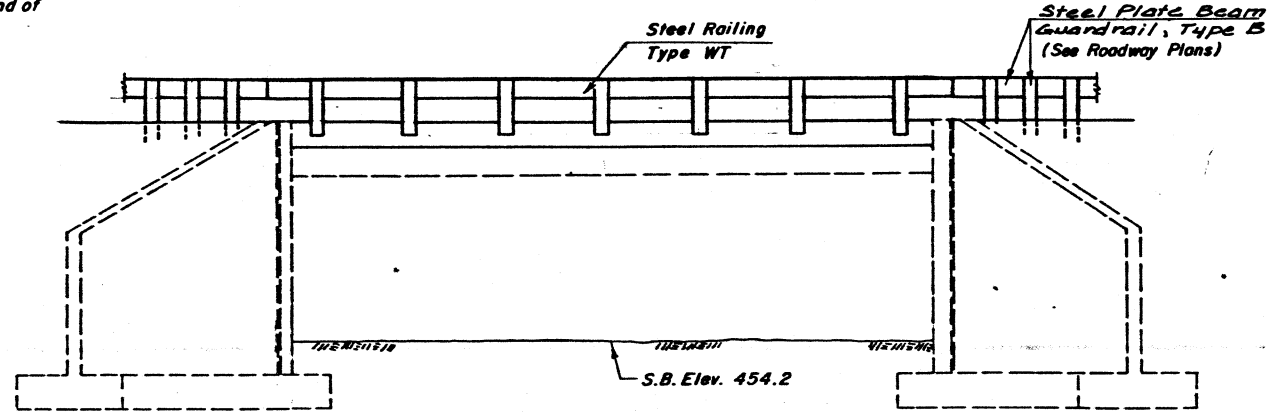
FOR UTILITY INFORMATION
CALL J.U.I.E.
PHONE 800-892-0123

GROSS LENGTH OF IMPROVEMENT= 35,859.6 FEET= 6.792 MILES
NET LENGTH OF IMPROVEMENT= 35,859.6 FEET= 6.792 MILES

DESIGNED BY: CASLER, HOUSER & HUTCHISON, INC. JACKSONVILLE, ILLINOIS

B.M. - M-233 USC & GS East End of South Abutment Sta. 1278+16, 25' Rt. Elev. 468.06
Exist. Str. No. 062-0008

ROUTE NO.	SECTION	COUNTY	TOTAL SHEETS	SHEET NO.
FA. 63	(3B)I	MARSHALL	223	86



ELEVATION

GENERAL NOTES
Plan dimensions and details relative to existing structure have been taken from existing plans and are subject to nominal construction variations. It shall be the Contractor's responsibility to verify such dimensions and details in the field and make necessary approved adjustments prior to construction or ordering of materials. Such variations shall not be cause for additional compensation for a change in the scope of the work, however, the Contractor will be paid for the quantity actually placed at the unit price bid for the work. Expansion bolts shall consist of approved expansion anchors, providing minimum certified proof load = 4,080 lbs., and 3/4" φ x 12" or 3/4" φ x 6" hooked bolts as noted in plans.

NOTE: METHOD 1 DECK REPAIR SHALL BE USED.

STATION 1277+92.00
REBUILT 199... BY
STATE OF ILLINOIS
F.A.P. RTE. 63 SEC. (3B)I
F.A. PROJ. F-318(1)
LOADING HS20
STR. NO. 062-0008

NAME PLATES
See Std. 2113

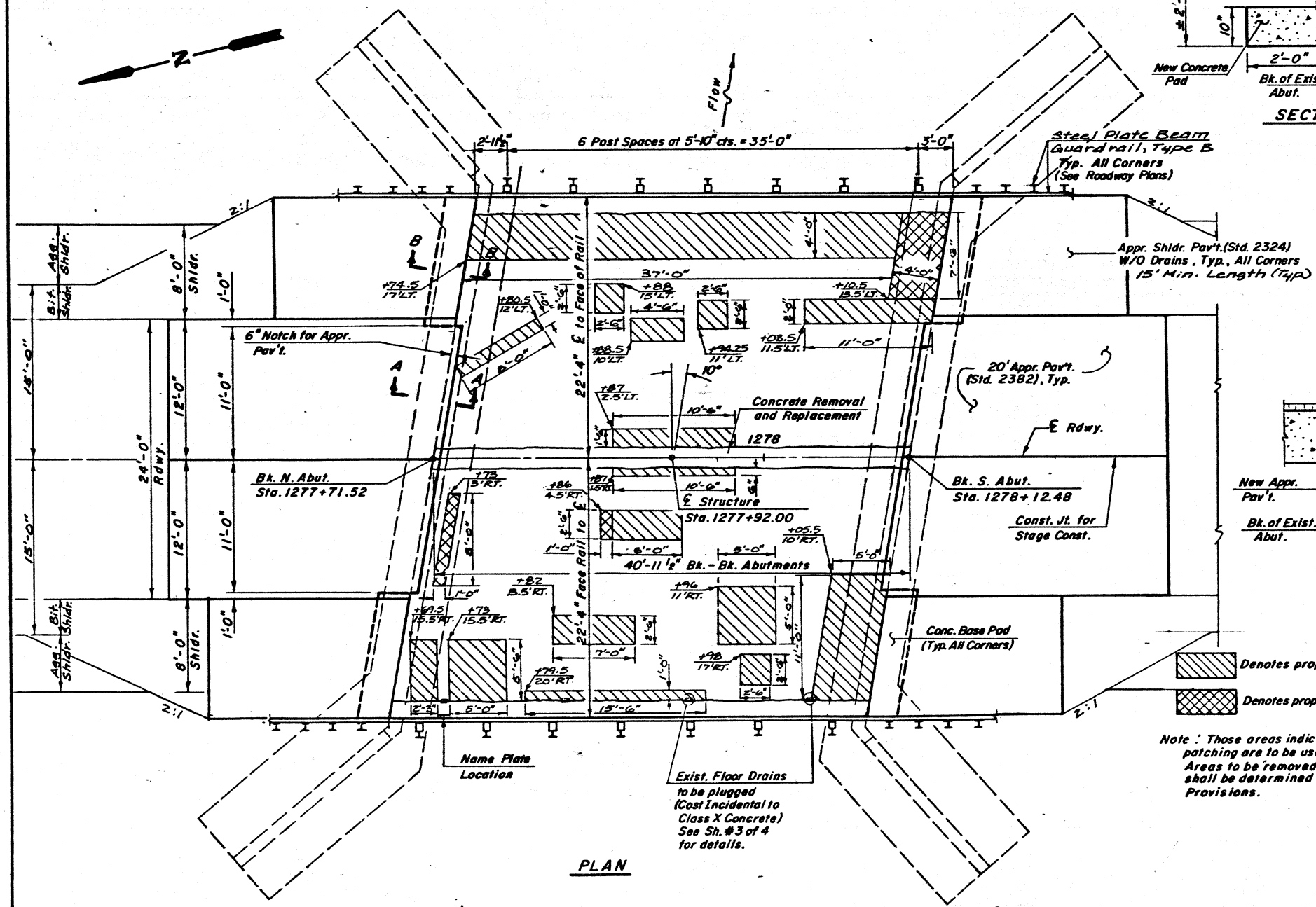


APPROVED
FOR STRUCTURAL ADEQUACY ONLY
Robert E. Anderson
Engineer of Bridges and Structures

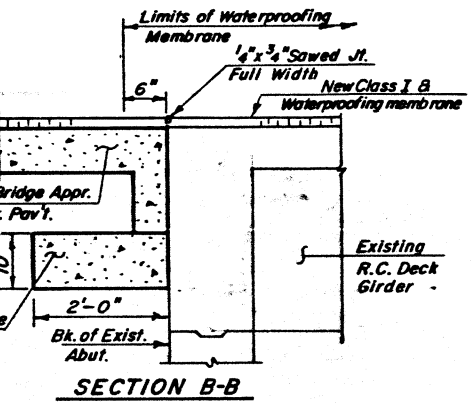
James O. Hamilton
3/22/91
Sec. Expires 11/30/92

TOTAL BILL OF MATERIAL

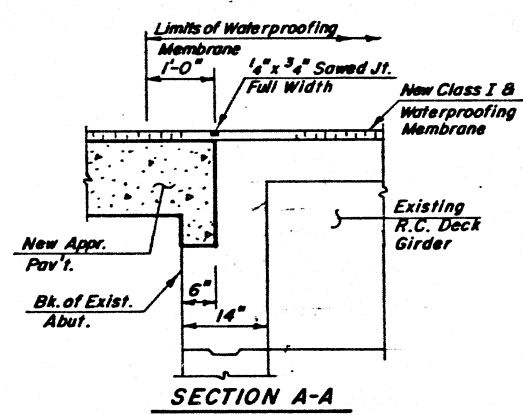
ITEM	UNIT	QUANTITY
Concrete Removal	Cu. Yd.	15
Class X Concrete	Cu. Yd.	8.8
Reinforcement Bars, Epoxy Coated	Pound	1110
Expansion Bolts 3/4" φ x 12"	Each	42
Name Plates	Each	1
Bituminous Surface Course, Class I	Ton	18
Waterproofing Membrane System	Sq. Yd.	214
Deck Slab Repair (Partial)	Sq. Yd.	44
Bituminous Concrete Surface Removal	Sq. Yd.	192
Steel Railing, Type WT	Lin. Ft.	82
Deck Slab Repair (Full Depth, Type I)	Sq. Yd.	5



PLAN



SECTION B-B



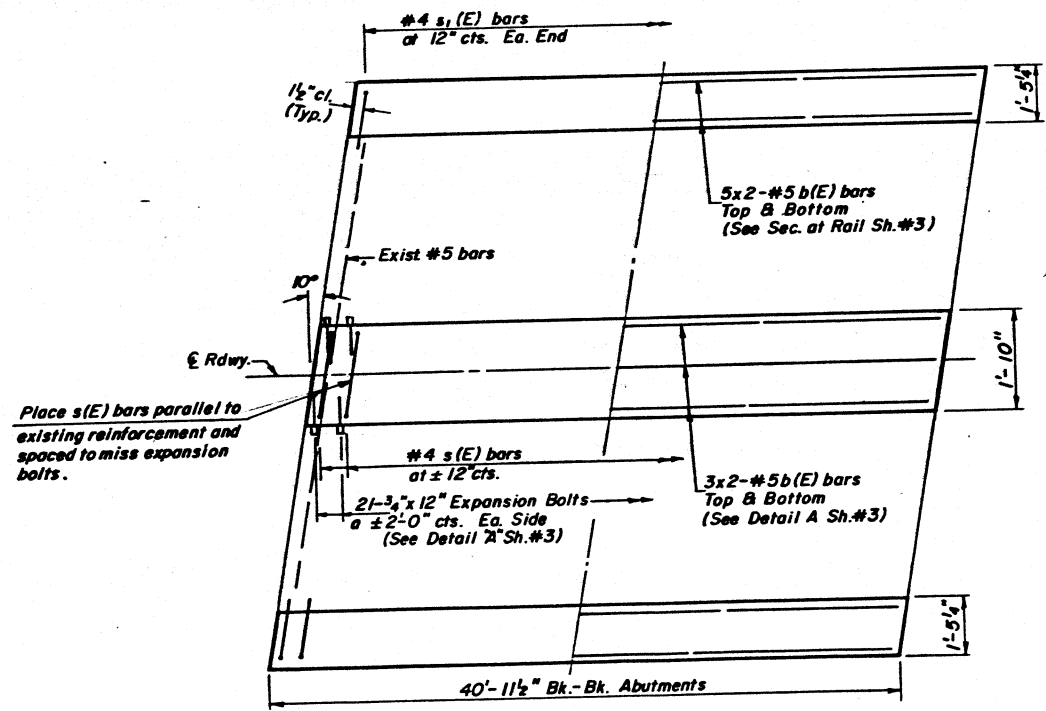
SECTION A-A

Denotes proposed partial depth patching
Denotes proposed full depth patching

Note: Those areas indicated on plan for partial and full depth patching are to be used only as a guide for bidding. Areas to be removed and partial and full depth patching shall be determined by the Engineer. See Special Provisions.

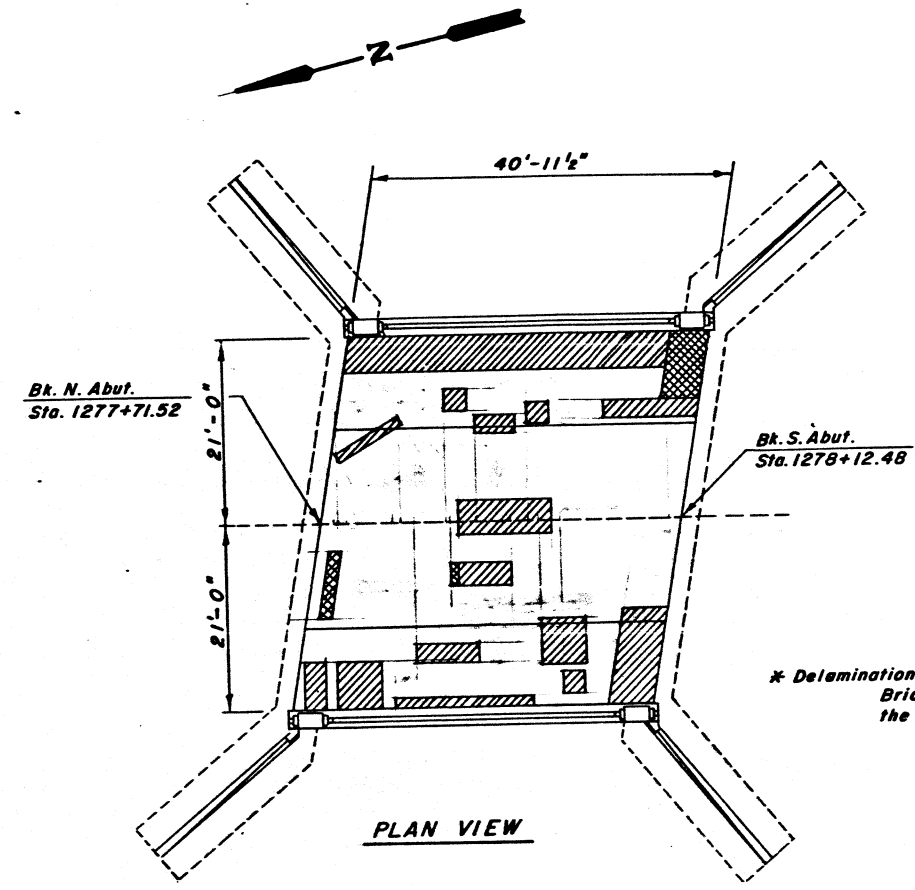
CASLER, HOUSER & HUTCHISON INC.
CONSULTING ENGINEERS
JACKSONVILLE ILLINOIS

GENERAL PLAN
F.A.P. 63 OVER BARRVILLE CREEK
SECTION (3B)I
MARSHALL COUNTY
STATION 1277+92
STR. NO. 062-0008



TRANSVERSE REINFORCEMENT
 LONGITUDINAL REINFORCEMENT
PLAN VIEW
 See Sheet #3 For Additional Details

Min. Bar Lap
 #5 bar = 2'-2"



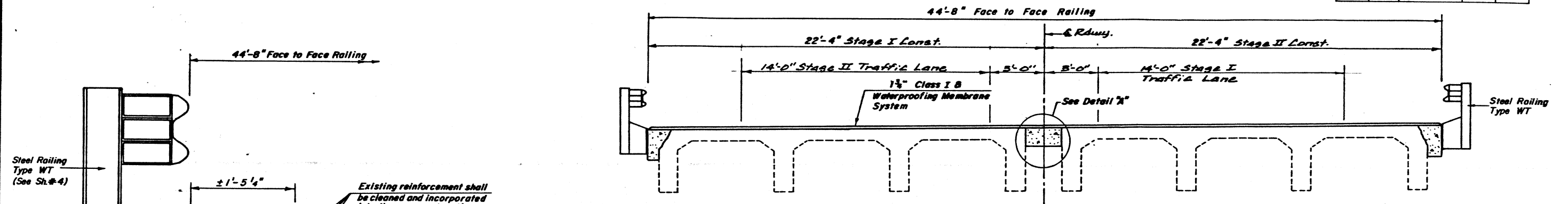
PLAN VIEW

LEGEND		AREAS (SQ. FT.)	
	Subsurface Delamination Half Depth	Total Area	1,718.8
	Subsurface Delamination Full Depth	Half Depth Delamination	404.0
		Full Depth Delamination	41.0
		Inspection Date	10/25/90

FOR INFORMATION ONLY

NOTE: METHOD 1 DECK REPAIR
 SHALL BE USED.

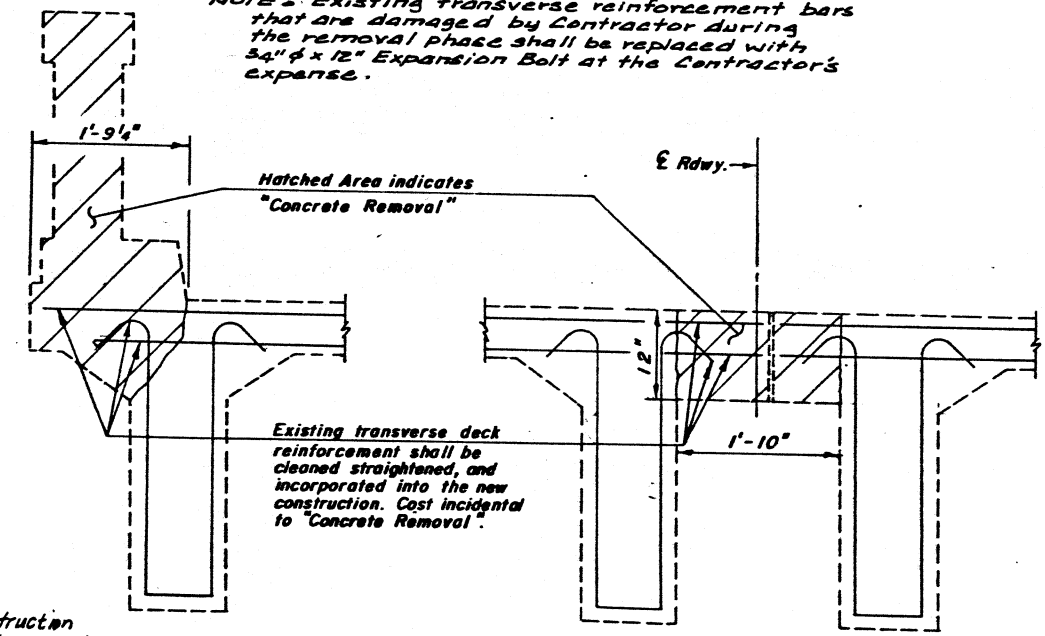
F.A.P. 63 OVER BARRVILLE CREEK
SECTION (5B)I
MARSHALL COUNTY
STATION 1277+92
STR. NO. 062-0008



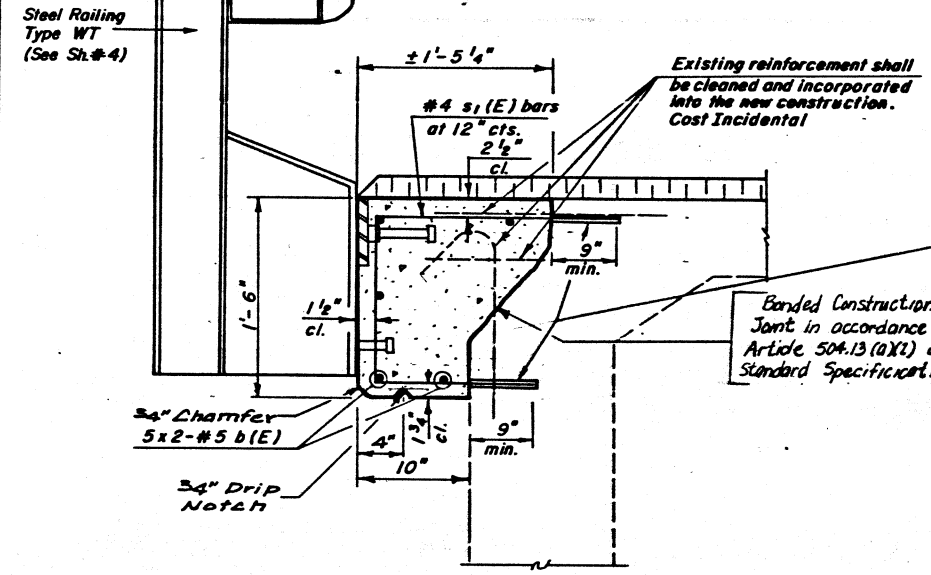
PROPOSED CROSS SECTION

(LOOKING NORTH)
Remove all existing bituminous concrete wearing surface on bridge deck.
The existing deck shall be cleaned in accordance with the Standard Specifications as directed by the Engineer.

NOTE: Existing transverse reinforcement bars that are damaged by Contractor during the removal phase shall be replaced with 3/4" x 12" Expansion Bolt at the Contractor's expense.



CONCRETE REMOVAL DETAIL

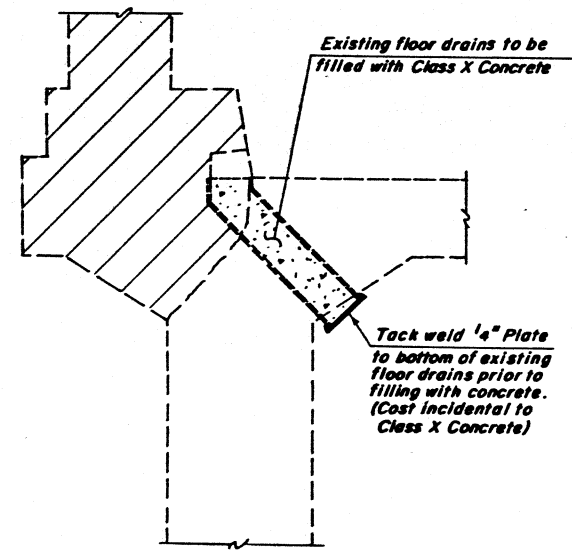
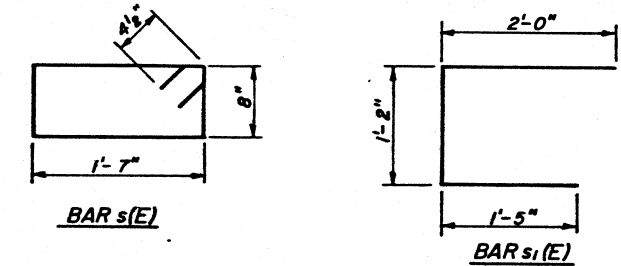


SECTION AT RAIL

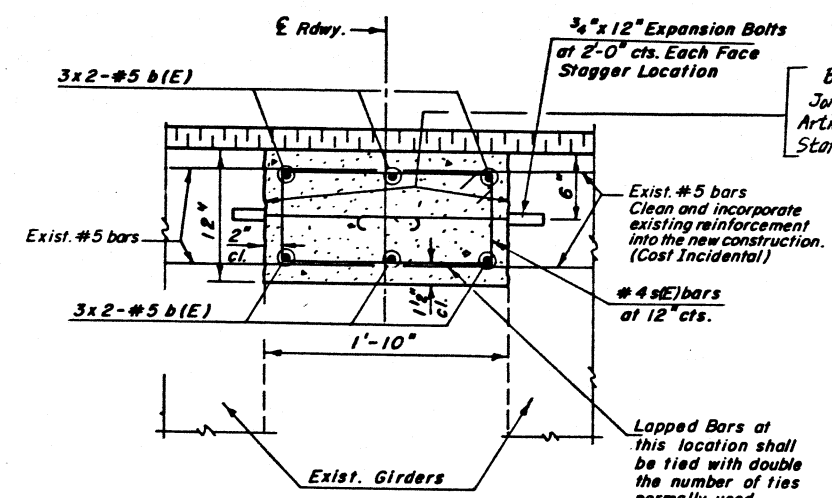
NOTE: Epoxy grout #5 s(E) bars in 1/2" x 9" minimum drilled holes. (Use a grout approved by the Department or epoxy coat in accordance with BSP-11 (See Special Provisions). The method of grout application shall be approved by the Engineer).

*NOTE: Hole diameter = bar diameter + 1/4"

NOTES: Bars indicated thus 1x2-#5 etc. indicates 1 line of bars with 2 lengths per line.
Reinforcement bars designated (E) shall be epoxy coated.



EXISTING FLOOR DRAIN DETAIL



DETAIL "A"

REINFORCEMENT BAR LIST

Bar	No.	Size	Length	Shape
b(E)	32	#5	21'-5"	—
s(E)	41	#4	5'-3"	□
s1(E)	82	#4	4'-7"	□
Reinforcement Bars (Epoxy Coated)			Lbs.	1110

NOTE: METHOD 1 DECK REPAIR SHALL BE USED.

F.A.P. 63 OVER BARRVILLE CREEK
SECTION (3B) I
MARSHALL COUNTY
STATION 1277+92
STR. NO. 062-0008

INDEX TO SHEETS SEC. 3

Sheet No.	Title Page
2	Std. No. 2062, 1766a (Spec. Cross Section 22 ft. pavt)
3	Std. No. 1913T, 1793S
4	Std. No. 1796S, 1914T
5	" " 1909R, 1908R
6	" " 1790S, 1897S
7	" " 2015R, 2016R, Location Sketch for Borrow; Spec. Outlet Hdws.
8	Detail of Intersection F.A.Rt. 30 & S.B.Rt. 17
9	Spec. Drainage Structures
10	" Transitions, Intersections Sta. 385+63 & Steps, Wall & Sidewalk
11	Delour; Tile Cleanouts; Steps, Wall & Sidewalk
12	Plan & Profile Sta. 292+00 to Sta. 305+00
13	" " " 305+00 " 335+00
14	" " " 335+00 " 365+00, Paved Ditch
15	" " " 365+00 " 380+00
16	" " " 380+00 " 395+00
17	" " " 395+00 " 418+70.8 = Sta. 200+00, Tile Headwall
18	" " " 200+00 " 230+00, Ditch Check
19	" " " 230+00 " 260+00
20	" " " 260+00 " 293+50
21	" " " 293+50 " 350+00, Hillside Grading
22	" " " 350+00 " 249+00 & Drainage
23	to 172 incl. Cross Sections
24	Spec. Curb Design Sta. 305+22, 405+86, 209+40, 247+62
25	Std. 2051
26	" 1976, 1744
27	" 1683, 1775, 1516
28	" 1867, 1776, 1892, 2017
29	" 1974, 1972, 2069
30	198A Plan and Profile for Delour Road at Ginlet Creek

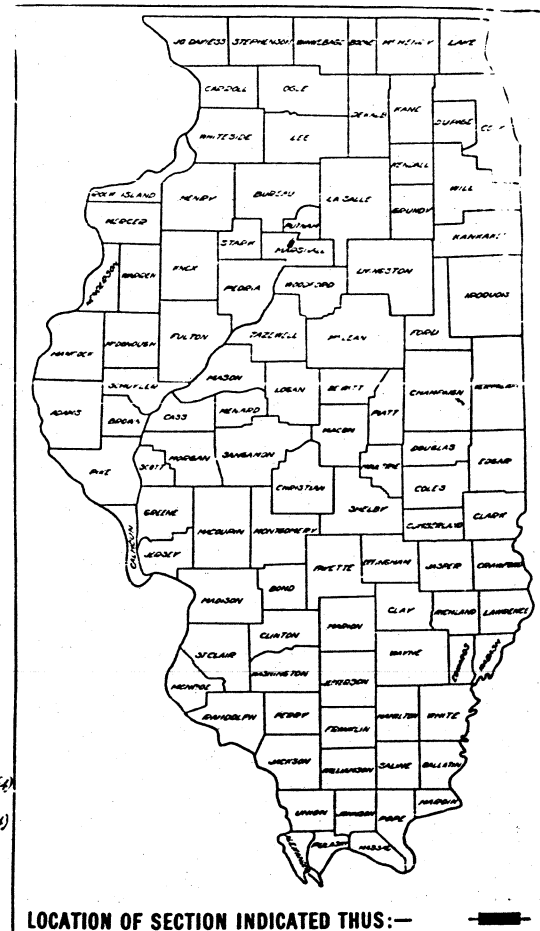
STATE OF ILLINOIS
DEPARTMENT OF PUBLIC WORKS AND BUILDINGS
DIVISION OF HIGHWAYS
PLANS FOR PROPOSED
FEDERAL AID HIGHWAY

PLAN 1 INCH = 100 FT.
PROFILE HOR. 1 INCH = 100 FT.
PROFILE VERT. 1 INCH = 10 FT.
CROSS-SECTIONS 1 INCH = 5 FT.

3B, 3F,
FED. AID ROUTE 30, SECTION 3, MARSHALL CO.
PROJECT F-5 (16)

From a point near the N.E. corner of the S.E. 1/4 of Section 2, T.12N., R.9E. of the 4th P.M. to a point near the S.W. corner of the N.W. 1/4 of the S.W. 1/4 of Section 26, T.12N., R.9E. of the 4th P.M.

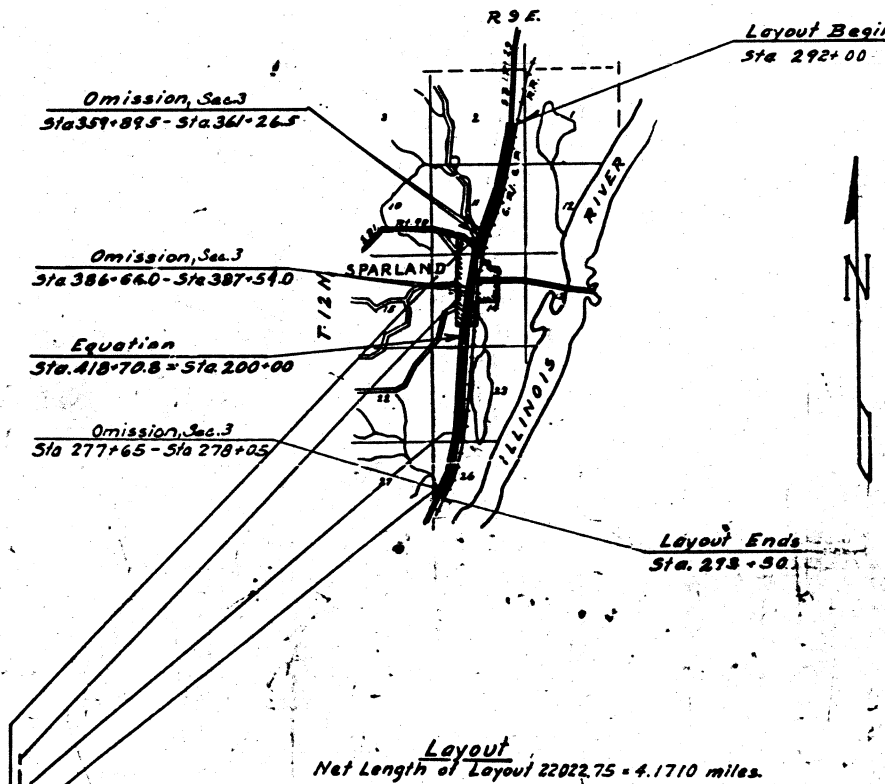
FED. AID ROUTE NO.	SEC.	COUNTY	TOTAL SHEETS	SHEET NO.
30	3B, 3F	Marshall	36	198



LOCATION OF SECTION INDICATED THUS: —

SUMMARY OF QUANTITIES SEC. 3

174,192	Cu.Yds.	Earth Excavation	80 Lin. Ft.	Comb. Conc. Curb & Gutter, Type 6
4,000	Cu.Yds.	Rock Excavation	283 Lin. Ft.	Corrugated Metal Pipe 15 inch
20,765	Cu.Yds.	Borrow Excavation	143 Each	Guard Posts
42,215	Sq.Yds.	Earth Shoulders	5165 Acres	Seeding
56,327	Sq.Yds.	P.C. Concrete Pavement 9"	103 Tons	Fertilizer
1,938	Ln.Ft.	Comb. Conc. Curb and Gutter, Type 5	Lump Sum	Removal of Temporary Bridge
667	Tons	Gravel or Crushed Stone Surface Course, Type A	150 Cu.Yds.	Broken Concrete Embankment
12,815	Lin.Ft.	Concrete Gutter Type A		
410	Lin.Ft.	Concrete Gutter Type B		
189	Sq.Yds.	Broken Concrete Rip Rap		
5,419	Sq.Yds.	Seeding		
52	Lin.Ft.	Paved Ditch		
42	Sq.Yds.	P.C. Conc. Driveway Pavement 6"		
2,640	Sq.Ft.	P.C. Conc. Sidewalk 4"		
252	Lin.Ft.	Gutter Removal		
18,187	Sq.Yds.	Pavement Removal		
3,768	Sq.Ft.	Sidewalk Removal		
568.5	Cu.Yds.	Class X Concrete		
65,785	Lbs.	Reinforcement Bars		
56,327	Sq.Yds.	Pavement Fabric		
401	Sq.Yds.	P.C. Concrete Pavement 15 1/2" x 15 1/2" x 15 1/2"		
3	Each	Inlets Type A, with Type 11 Frame		
1	Each	Inlets Type A, with Type 8 Grate		
16,263	Lbs.	Cast Iron Grates		
78	Lin.Ft.	Corrugated Metal Pipe 6 inch		
72	Lin.Ft.	Corrugated Metal Pipe 12 inch		
68	Lin.Ft.	Corrugated Metal Pipe 18 inch		
96	Lin.Ft.	Corrugated Metal Pipe 24 inch		
97	Lin.Ft.	Pipe Culverts Type 1 12 inch		
96	Lin.Ft.	Pipe Culverts Type 1 15 inch		
48	Lin.Ft.	Pipe Culverts Type 1 18 inch		
36	Lin.Ft.	Pipe Culverts Type 1 24 inch		
190	Lin.Ft.	Pipe Culverts Type 1 30 inch		
60	Lin.Ft.	Pipe Culverts Type 2 15 inch		
218	Lin.Ft.	Pipe Culverts Type 1 (Std. Strength Rein. Conc. Curb. Pipe) 15 inch		
498	Lin.Ft.	Pipe Culverts Type 1 (Std. Strength Rein. Conc. Curb. Pipe) 18 inch		
508	Lin.Ft.	Pipe Culverts Type 1 (Std. Strength Rein. Conc. Curb. Pipe) 24 inch		
608	Lin.Ft.	Pipe Culverts Type 1 (Std. Strength Rein. Conc. Curb. Pipe) 30 inch		
568	Lin.Ft.	Pipe Culverts Type 1 (Std. Strength Rein. Conc. Curb. Pipe) 36 inch		
566	Lin.Ft.	Pipe Culverts Type 2 (Std. Strength Rein. Conc. Curb. Pipe) 24 inch		
248	Lin.Ft.	Pipe Culverts Type 2 (Std. Strength Rein. Conc. Curb. Pipe) 30 inch		
148	Lin.Ft.	Pipe Culverts Type 2 (Std. Strength Rein. Conc. Curb. Pipe) 36 inch		
127	Lin.Ft.	Pipe Culverts Type 2 (Std. Strength Rein. Conc. Curb. Pipe) 6 inch		
1,580	Lbs.	Structural Steel		
375	Lin.Ft.	Pipe Handrail		
53	Each	Furnishing and Erecting Right of Way Markers		
6,342	Lin.Ft.	Pipe Underdrains (Extra Quality Drain Tile) 6 inch		
1,266	Lin.Ft.	Pipe Underdrains (Park. Corr. Metal Pipe) 6 inch		
3,374	Cu.Yds.	Form Granular Backfill		
14,000	Cu.Yds.	Granular Borrow Furnished at Site of Work		
14,000	Cu.Yds.	Granular Borrow Spread and Placed		
860	Sq.Yds.	Pavement Breaking		
300	Cu.Yds.	Gravel or Crushed Stone Surface Course Type B (Gr. 7 or 10)		
40,000	Gal.	Bituminous Materials Applied (Sec-2)		
10,700	Cu.Yds.	Channel Excavation		
2	Each	Project Markers		
5179	Lin.Ft.	Pipe Underdrains (Extra Quality Drain Tile) 6 inch		
1486	Lin.Ft.	Pipe Culverts (Corr. Metal Pipe for Pipe Underdrain Outlets) 6 inch		
39	Lin.Ft.	Furnishing Special Corrugated Metal Pipe Culverts 36 inch		
44	Lin.Ft.	Furnishing Special Corrugated Metal Pipe Culverts 24 inch		



Section 3B includes the construction of:-
 a Continuous Steel I-Beam Bridge, spans 20'-0" & 10'-5 1/2" @ Sta. 360+58
 a Steel Deck Plate Girder Bridge, 1 span @ 84'-0" @ Sta. 387+10
 a Steel I-Beam Bridge, 2 spans @ 44'-6 1/2" @ Sta. 252+42
 a RC Girder Bridge, 1 span @ 38'-7" @ Sta. 277+85
 with the exception of furnishing and fabrication of the structural steel and pipe handrail, furnishing and applying the Shop Coat of Paint, and delivery of the said material to a b. Sparland.
 Section 3F includes the furnishing and fabrication of the structural steel and pipe handrail, furnishing and applying the Shop Coat of Paint, and delivery of the said material to a b. Sparland, for:-
 a Continuous Steel I-Beam Bridge, spans 20'-0" & 10'-5 1/2" @ Sta. 360+58
 a Steel Deck Plate Girder Bridge, 1 span @ 84'-0" @ Sta. 387+10
 a Steel I-Beam Bridge, 2 spans @ 44'-6 1/2" @ Sta. 252+42

INDEX TO SHEETS SEC 3B & 3F

Sheet No.	Title Sheet
2	Plan & Profile Sta. 335+00 to 365+00
3	3 1/2 in. Sp. Bridge Plans, Sta. 360+58 (Sheets 1 & 2)
7	Plan & Profile Sta. 380+00 to 395+00
8	8 1/4 in. Sp. Bridge Plans, Sta. 387+10 (Sheets 1 & 2)
15	Plan & Profile for Delour Road at Ginlet Cr.
16	" " " Sta. 230+00 to 260+00
17	20 in. Sp. Bridge Plans, Sta. 252+42.5 (Sheets 1 & 2)
21	Plan & Profile Sta. 260+00 to 293+50
22	2 1/2 in. Sp. Bridge Plans, Sta. 277+85 (Sheets 1 & 2)
26	Plan & Profile Sta. 200+00 to 230+00
27	3 1/2 in. Sheet Cross Sections
36A	Standard 1882, 1971, 1972

SUMMARY OF QUANTITIES SEC. 3B

2878	Cu. Yds.	Earth Excavation
780	Cu. Yds.	Borrow Excavation
1740	Cu. Yds.	Channel Excavation
360	Cu. Yds.	Rock Excavation for Structures
1400	Cu. Yds.	Compaction by Water Soaking
233	Cu. Yds.	Handrail Concrete
10764	Cu. Yds.	Class X Concrete
129,830	Lbs.	Reinforcement Bars
370,200	Lbs.	Structural Steel
2132	Lin.Ft.	Furnishing Untreated Piles up to 30 ft.
235	Lin.Ft.	Furnishing Treated Piles up to 20 ft.
860	Lin.Ft.	Furnishing Precast Concrete Piles
135	Lin.Ft.	Driving Timber Piles 15 ft. long
100	Lin.Ft.	Driving Timber Piles 20 ft. long
2132	Lin.Ft.	Driving Timber Piles 26 ft. long
608	Lin.Ft.	Driving Precast Concrete Piles 32 ft. long
252	Lin.Ft.	Driving Precast Concrete Piles 36 ft. long
1	Each	Test Pile (Timber)
2	Each	Test Pile (Precast Concrete)
14	Each	Metal Shoes
4	Each	Floor Drains
540	Sq. Yds.	Slope Wall
1	Each	Name Plate
2	Each	Removal of Existing Structures
1	Each	Removal of Existing Abutment
228	Sq. Yds.	Pavement Removal
22	Lin.Ft.	Pipe Culverts Type 2 (SSRCCP) 24 inch
200	Lin.Ft.	Pipe Handrail
2	Each	Cast Iron Frames and Grates
48	Lin.Ft.	Corrugated Metal Pipe 12 inch
Lump Sum		Temporary Bridge
Lump Sum		Remodeling Existing Structure
96	Cu. Yds.	Gravel or Crushed Stone Surface Course, Type B
10	Cu. Yds.	Stockpiled Material

SUMMARY OF QUANTITIES - SEC. 3F

310,200	Lbs.	Structural Steel
200	Lin.Ft.	Pipe Handrail

STATE OF ILLINOIS
DEPARTMENT OF PUBLIC WORKS AND BUILDINGS
DIVISION OF HIGHWAYS

SUBMITTED: June 10, 1966
J.D. Morrison
EXAMINED: 8-27
E.D. Johnson
PASSED: R.T. Hill
APPROVED: W.W. Volk
APPROVED: J.D. Morrison

RECOMMENDED FOR APPROVAL DATE

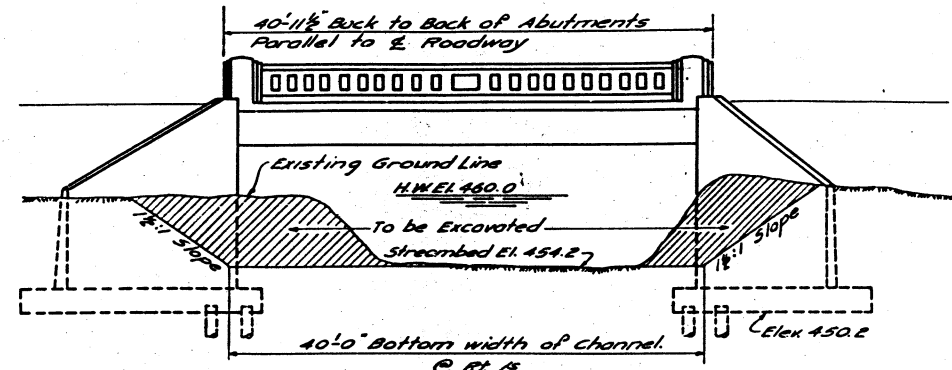
DESIGNED BY: J.D. Morrison
CHECKED BY: E.D. Johnson
PUBLIC WORKS ADMINISTRATION
FEDERAL AID HIGHWAY PROJECT F-5 (16)
APPROVED BY: W.W. Volk
DIVISION ENGINEER
PUBLIC WORKS ADMINISTRATION
STATE OF ILLINOIS

B.M. #10 chiseled in S.W. Wing Wall Concrete Bridge
 Rt. Sta. 278+00 Elev. 462.66
 Existing Structure: 40' R.C. Girder Span on
 concrete Abutments to be removed by Paving Contractor
 when no longer needed to maintain traffic on old slab.

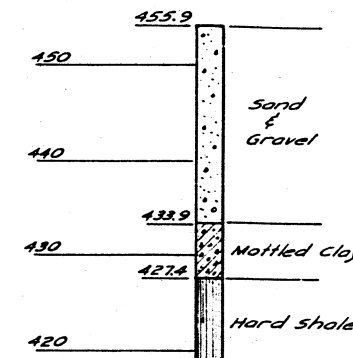
STATE OF ILLINOIS
 DEPARTMENT OF PUBLIC WORKS & BUILDINGS
 DIVISION OF HIGHWAYS

SECTION	COUNTY	TOTAL SHEETS	SHEET NO.
3B	Marshall	36	4

4 SHEETS

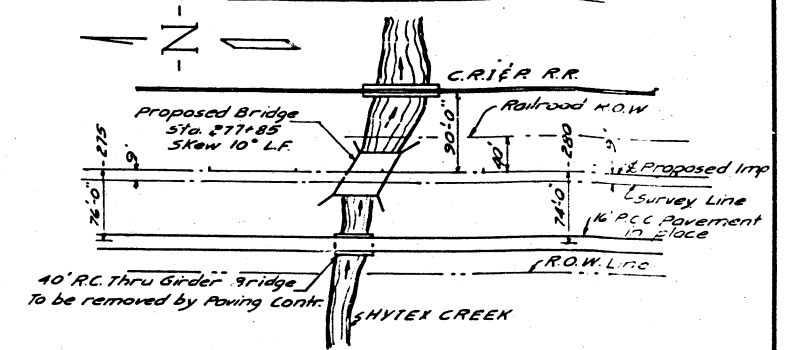


ELEVATION
 Scale 1/8" = 1'-0"

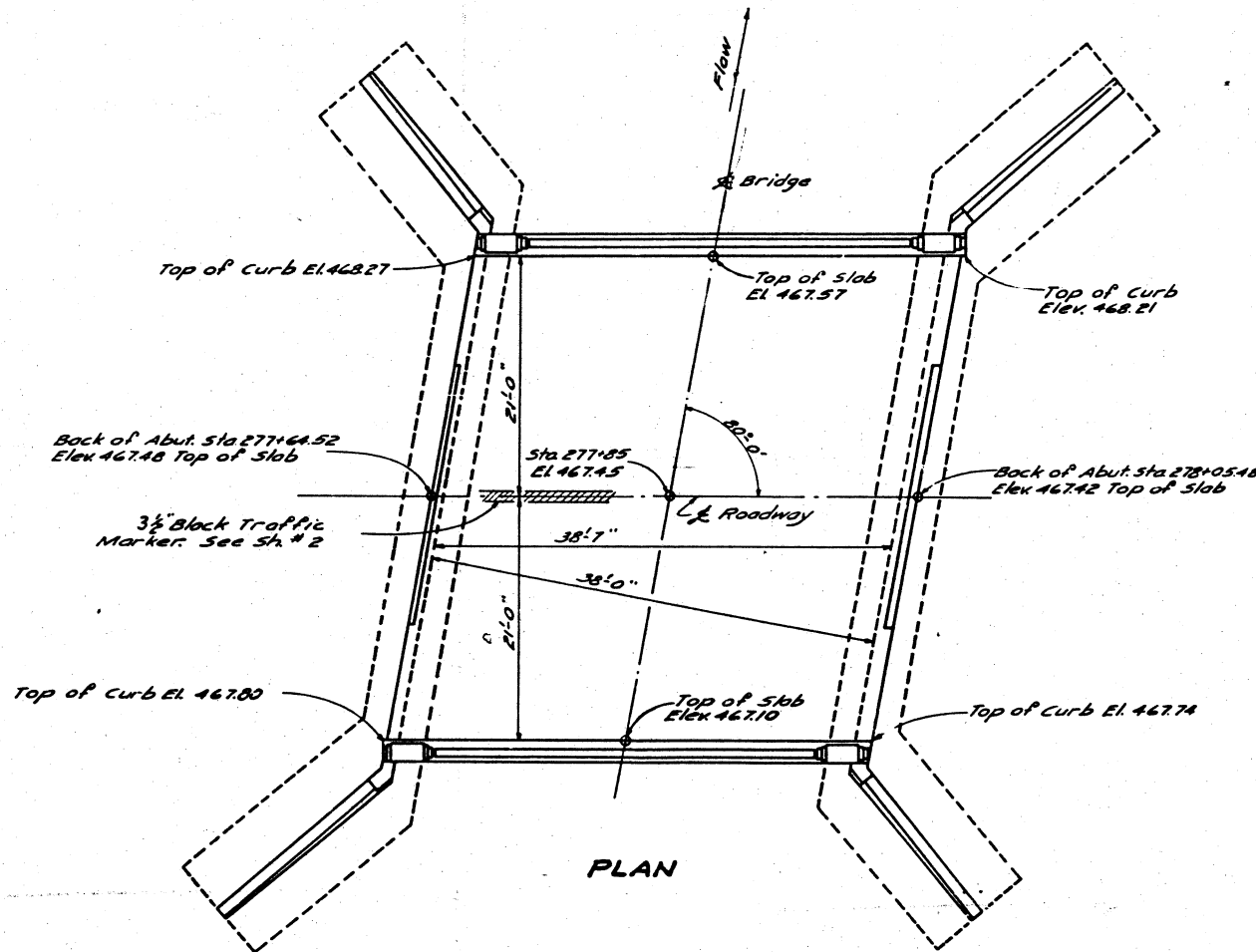
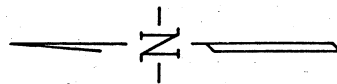


BORING DATA
 STA. 277+83
 15' Lt. of Survey Line

Boring Data are shown on the drawings only as a guide to bidders in estimating soil conditions which may be encountered in the work.



LOCATION SKETCH



PLAN

Contractor shall excavate Channel as shown within the R.O.W. limits. Est. 400 cu. Yds. Channel Excavation to be placed in Roadway Embankment as directed by the Engineer.

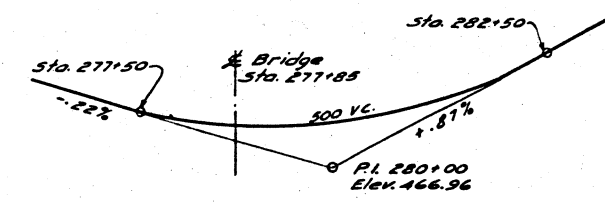


CHANNEL CROSS SEC.

GENERAL NOTES
 Class X concrete shall be used thruout except as noted.
 Handrail concrete shall be used in Handrail.
 The concrete floor slab & girders between joint near & Roadway and either outside edge of slab shall be poured in one continuous operation.
 The concrete floor slab shall be finished in accordance with Art. E.1.3(e) of the Specifications.
 Handrail shall not be poured until after the falsework has been removed.

No backfill shall be placed until the structure is completed and falsework removed.
 Backfill shall be carried up simultaneously at each abutment and at no time shall the backfill at one abutment be more than two feet higher than the other.
 No Paint required for Floor Drains.

Contractor shall drive one test pile as directed by the Engineer before ordering remainder of Piles.



PROFILE OF V.C.

DRAINAGE DATA
 Drainage Area ----- 1300 Acres
 Character ----- Hilly, Wooded, Cultivated
 Assumed ϵ (Talbot) ----- 1.0
 Opening Required by Formula ----- 216 Sq. Ft.
 Proposed Opening below H.W. ----- 220 Sq. Ft.

TOTAL BILL OF MATERIAL

ITEM	SUPER	SUBSTR	TOTAL
Class X Concrete Cu. Yds.	94.3	171.6	265.9
Handrail Concrete Cu. Yds.	5.9		5.9
Reinforcement Bars Lbs.	21580	9940	31520
Floor Drains Ea.	4		4
Untreated Timber Piles (26"lg) Lin Ft.		2132	2132
Test Piles Ea.		One	One
Channel Excavation Cu. Yds.			400

$f_2 = 20000 \text{ } \frac{1}{2} \text{ \"}$
 $f_3 = 1200 \text{ } \frac{1}{2} \text{ \"}$ Super.
 $f_4 = 800 \text{ } \frac{1}{2} \text{ \"}$ Substr.
 $n = 10$

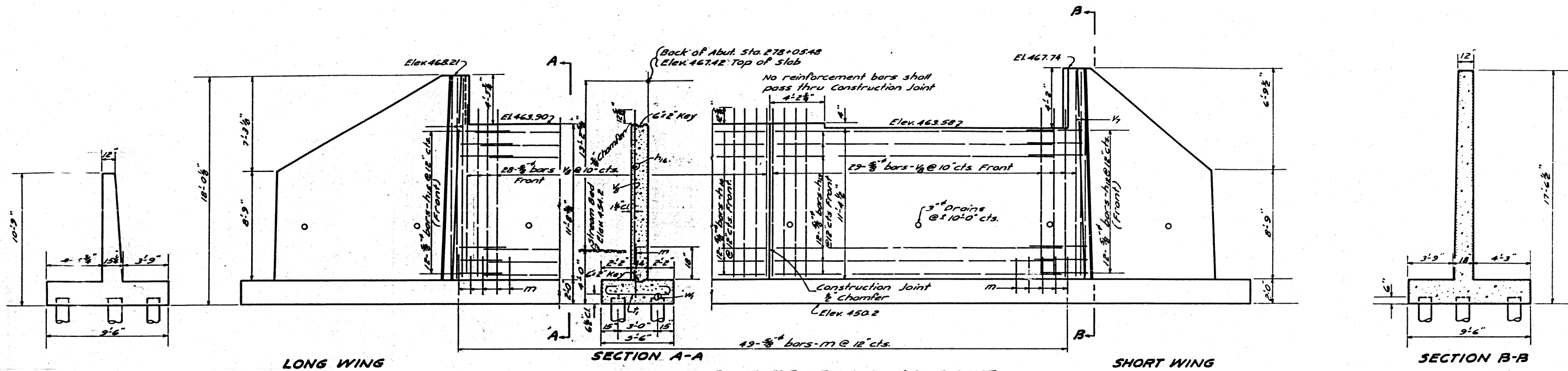
PROJ. F-5(16)
 GENERAL PLAN
 BRIDGE OVER HYTEX CREEK
 F.A. RT. 30 (S.B.I. RT. 29) SEC. 3-B
 MARSHALL COUNTY
 STA. 277+85

COMPUTED	Edmond I. Dablow	EXAMINED	1-3-44
CHECKED	R.P. Quinn	DESIGNED	J. F. Sweeney
DRAWN	E. P. Alvisini	PASSED	[Signature]
CHECKED	[Signature]	APPROVED	N. N. O'Neil
SPECIAL	ASSEMBLED		
	CHECKED		

STATE OF ILLINOIS
DEPARTMENT OF PUBLIC WORKS & BUILDINGS
DIVISION OF HIGHWAYS

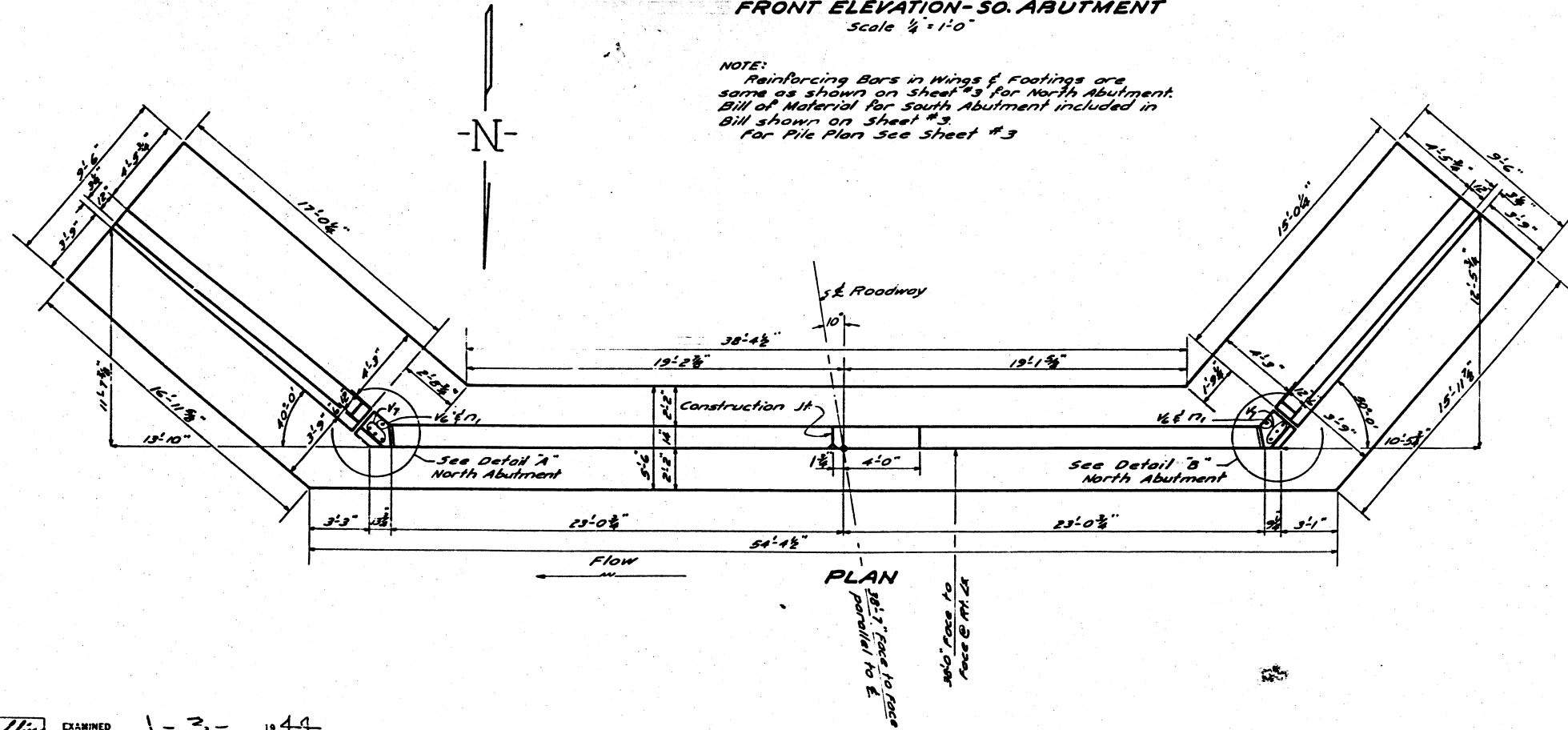
SECTION	COUNTY	TOTAL SHEETS	SHEET NO.
FA	Marshall	36	25

SHEET NO. 4
4 SHEETS



FRONT ELEVATION-SO. ABUTMENT
Scale 1/4" = 1'-0"

NOTE:
Reinforcing Bars in Wings & Footings are
same as shown on Sheet #3 for North Abutment.
Bill of Material for South Abutment included in
Bill shown on Sheet #3.
For Pile Plan See Sheet #3



PLAN

STANDARD	COMPUTED	Edward J. Dublin
	CHECKED	H. O. Cook
SPECIAL	ASSEMBLED	
	CHECKED	

EXAMINED	1-3-1949
PASSED	G. F. Burch
APPROVED	W. W. Poch

PROJ. F-5(16)
SOUTH ABUTMENT
HYTEX CREEK
F.A.R.T. 30 (S.B.I.R.T. 29) SEC. 3-B
MARSHALL COUNTY
STA. 277+85