

STATE OF ILLINOIS
DEPARTMENT OF TRANSPORTATION

F.A. RTE.	SECTION	COUNTY	TOTAL SHEETS	SHEET NO.
516	(240B)BR-1	CHAMPAIGN	15	1
ILLINOIS			CONTRACT NO. 70H61	

FOR INDEX OF SHEETS, SEE SHEET NO. 2
FOR SUMMARY OF QUANTITIES, SEE SHEET NO. 3

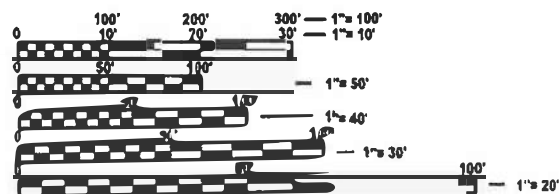
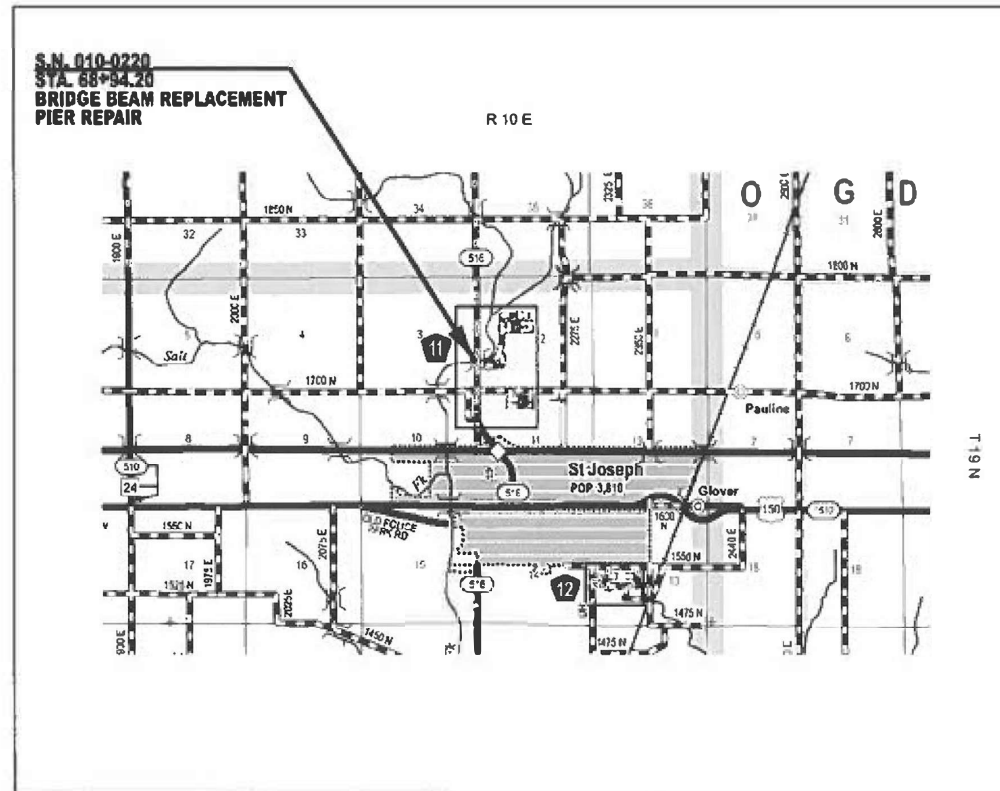
PROPOSED
HIGHWAY PLANS

FAS ROUTE 516 (CH 12)
SECTION (240B)BR-1
PROJECT N/A
BRIDGE BEAM REPLACEMENT, PIER REPAIR
CHAMPAIGN COUNTY

C-95-047-25
AT SALT FORK RIVER 1 MI N OF ST JOSEPH

TRAFFIC DATA

2025 ADT	2,100
2035 ADT	2,200
2045 AM D	225
2045 PM D	240
PV + PC%	88.1
SU%	6.2
MU%	5.7



FULL SIZE PLANS HAVE BEEN PREPARED USING STANDARD ENGINEERING SCALES. REDUCED SIZED PLANS WILL NOT CONFORM TO STANDARD SCALES, IN MAKING MEASUREMENTS ON REDUCED PLANS, THE ABOVE SCALES MAY BE USED.

J.U.L.I.E.
JOINT UTILITY LOCATION INFORMATION FOR EXCAVATION
1-800-892-0123
OR 811

PROJECT ENGINEER: TIM BRANDENBURG
PROJECT MANAGER: JEFF M. SHERER

CONTRACT NO. 70H61

GROSS LENGTH = 1000.0 FT. = 0.189 MILE
NET LENGTH = 1000.0 FT. = 0.189 MILE

STATE OF ILLINOIS
DEPARTMENT OF TRANSPORTATION

SUBMITTED 12/2 20 25
Kenneth A. Knack, Jr.
REGIONAL ENGINEER

January 23, 2026
Scott A. Etkin
ENGINEER OF DESIGN AND ENVIRONMENT

January 23, 2026
Gregory
DIRECTOR OF HIGHWAYS PROJECT IMPLEMENTATION

PRINTED BY THE AUTHORITY
OF THE STATE OF ILLINOIS

INDEX OF SHEETS

<u>SHEET NO.</u>	<u>ITEM</u>
✓ 1	COVER SHEET
✓ 2	INDEX OF SHEETS/ HIGHWAY STANDARDS/ GENERAL NOTES
✓ 3	SUMMARY OF QUANTITIES
✓ 4	TYPICAL BRIDGE CROSS-SECTIONS
5-10	S.N. 010-0220 REPAIR PLANS
11-14	DETAIL OF STRUCTURAL CONCRETE REPAIR
✓ 15	DETAIL OF MARKED DETOUR

LIST OF STANDARDS

<u>STANDARD NO.</u>	<u>DESCRIPTION</u>
000001-09	STANDARD SYMBOLS, ABBREVIATIONS AND PATTERNS
001001-02	AREAS OF REINFORCEMENT BARS
001006	DECIMAL OF AN INCH AND OF A FOOT
701001-02	OFF RD OPERATIONS, 2L, 2W, 15' FROM PAVEMENT EDGE
701006-05	OFF RD OPERATIONS, 2L, 2W, 15' TO 24" FROM PAVEMENT EDGE
701301-04	LANE CLOSURE, 2L, 2W, SHORT TIME OPERATION
701901-11	TRAFFIC CONTROL DEVICES

GENERAL NOTES

G.N.-100

ENGLISH UNITS OF MEASUREMENT SHALL GOVERN OVER AND SUPERSEDE ANY METRIC UNITS SHOWN IN THIS CONTRACT. WHERE INCLUDED, METRIC UNITS ARE FOR INFORMATION ONLY.

G.N. 780

FINAL PAVEMENT MARKING ON THIS PROJECT WILL BE COMPLETED BY DISTRICT OPERATIONS PERSONNEL. THE CONTRACTOR SHALL BE REQUIRED TO PLACE AND REMOVE SHORT TERM STRIPING AND REMOVE WORK ZONE PAVEMENT MARKING. TO COORDINATE STRIPING, THE CONTRACTOR SHALL NOTIFY THE DISTRICT TRAFFIC OPERATIONS ENGINEER, GARY SIMS, AT 217-251-4859 AS SOON AS ALL WORK HAS BEEN COMPLETED AND THE ROADWAY HAS BEEN REOPENED.

(FOR 2 LANE PROJECTS WITH LESS THAN 1000' BETWEEN STOP BARS THIS IS THE SAME AS THE SPECIAL PROVISION...USE D5 SPECIAL PROVISION.)

G.N.-1004.01

COARSE AGGREGATE GRADATION CA-10 MAY BE USED WHENEVER COARSE AGGREGATE CA-6 IS SPECIFIED IN THE STANDARD SPECIFICATIONS.

THERE ARE NO COMMITMENTS ASSOCIATED WITH THIS PROJECT

**STATE OF ILLINOIS
DEPARTMENT OF TRANSPORTATION**

**INDEX OF SHEETS
GENERAL NOTES**

SCALE: SHEET 1 OF 1 SHEETS STA. TO STA.

F.A.S. RTE.	SECTION	COUNTY	TOTAL SHEETS	SHEET NO.
516	(240B)BR-1	CHAMPAIGN	15	2
CONTRACT NO. 70H61				
ILLINOIS FED. AID PROJECT				

USER NAME = Jeff.Sherer	DESIGNED -	REVISED -
	DRAWN -	REVISED -
	CHECKED -	REVISED -
PLOT DATE = 12/2/2025	DATE -	REVISED -

CHAMPAIGN COUNTY
FA ROUTE 516
RURAL
BRIDGE BEAM REPLACEMENT
PIER REPAIR
S.N. 010-0220
100% STATE

CODE NO.	ITEM	UNIT	TOTAL QUANTITY	0013
50300300	PROTECTIVE COAT	SQ YD	119.0	119.0
50400405	PRECAST PRESTRESSED CONCRETE DECK BEAMS (21" DEPTH)	SQ FT	795.0	795.0
50800205	REINFORCEMENT BARS, EPOXY COATED	POUND	1530.0	1530.0
50800530	MECHANICAL SPLICERS	EACH	268.0	268.0
53212754	STRUCTURAL REPAIR OF CONCRETE (DEPTH EQUAL TO OR LESS THAN 5 INCHES)	SQ FT	102.0	102.0
67000500	ENGINEER'S FIELD OFFICE, TYPE B	CAL MO	3.0	3.0
67100100	MOBILIZATION	L SUM	1.0	1.0
70107025	CHANGEABLE MESSAGE SIGN	CAL DA	14.0	14.0
X5010010	REMOVAL OF EXISTING PRECAST PRESTRESSED CONCRETE DECK BEAMS	SQ FT	795.0	795.0
X5030275	CONCRETE WEARING SURFACE REMOVAL	SQ YD	119.0	119.0
X5030305	CONCRETE WEARING SURFACE, 5"	SQ YD	119.0	119.0
X5091742	REMOVE AND RE-ERECT EXISTING BRIDGE RAIL	FOOT	265.0	265.0
X7200203	DETOUR SIGNING	L SUM	1.0	1.0
Z0013798	CONSTRUCTION LAYOUT	L SUM	1.0	1.0

* SPECIALTY ITEM

MODEL: Summary Of Quantities [Sheet]
 FILE NAME: c:\pwworking\sheronm\10759568170H61-SH-SOQ.dgn

USER NAME = Jeff.Sherer	DESIGNED -	REVISED -
	DRAWN -	REVISED -
	CHECKED -	REVISED -
PLOT DATE = 12/4/2025	DATE -	REVISED -

STATE OF ILLINOIS
DEPARTMENT OF TRANSPORTATION

SUMMARY OF QUANTITIES			
SCALE: NONE	SHEET 1	OF 1 SHEETS	STA. TO STA.

F.A.B. RTE.	SECTION	COUNTY	TOTAL SHEETS	SHEET NO.
516	(240B)BR-1	CHAMPAIGN	15	3
CONTRACT NO. 70H61				
ILLINOIS FED. AID PROJECT				

GENERAL NOTES

Plan dimensions and details relative to the existing structure have been taken from existing plans and are subject to nominal construction variations. The Contractor shall field verify existing dimensions and details affecting new construction and make necessary approved adjustments prior to construction or ordering of materials. Such variations shall not be cause for additional compensation for a change in scope of the work, however, the Contractor will be paid for the quantity actually furnished at the unit price bid for the work.

The Contractor is advised that the existing PPC Deck Beams are in a deteriorated condition with reduced load carrying capacity. It is the Contractor's responsibility to account for the condition of the beams when developing construction procedures.

If the Contractor's procedure for existing beam removal or placement of new beams involves placement of cranes or other heavy equipment on the bridge, a detailed procedure shall be submitted to the Engineer for approval. The procedure shall include calculations, prepared and sealed by an Illinois Licensed Structural Engineer, verifying that the equipment and procedure used will not overstress the new or existing beams. To distribute load to multiple beams and protect the existing surface, in all cases a double layer mat of heavy timbers shall be used at all times under crane tracks or wheels and any outriggers in the down position. If necessary, shims shall be used under the crane mat to ensure uniform contact with the underlying beams. If heavy equipment will be placed on new PPC deck beams, the following shall be done prior to placement of the timber mats: placement and tightening of transverse tie assemblies, grouting and curing the dowel rods 24 hours minimum and grouting and curing the shear keys.

The top surface of the beams shall be finished according to the IDOT Manual for Fabrication of Precast Prestressed Concrete Products.

Any damage done to the bridge during beam removal shall be repaired by the Contractor. Cost to be included in the cost of Removal of Existing PPC Deck Beams.

Reinforcement bars designated (E) shall be epoxy coated.

The minimum thickness of the concrete overlay shall be 5" and varies as required to adjust for the existing profile grade and beam camber.

Work to be completed under road closure.

DESIGN SPECIFICATIONS

20_ AASHTO LRFD Bridge Design Specifications, ___ Edition

DESIGN STRESSES

PRECAST PRESTRESSED UNITS

f'c = 6,000 psi
f'ci = 5,000 psi
f's = 270,000 psi (1/2" Ø low lax strands)
f'si = 201,960 psi (1/2" Ø low lax strands)

DESIGN STRESSES

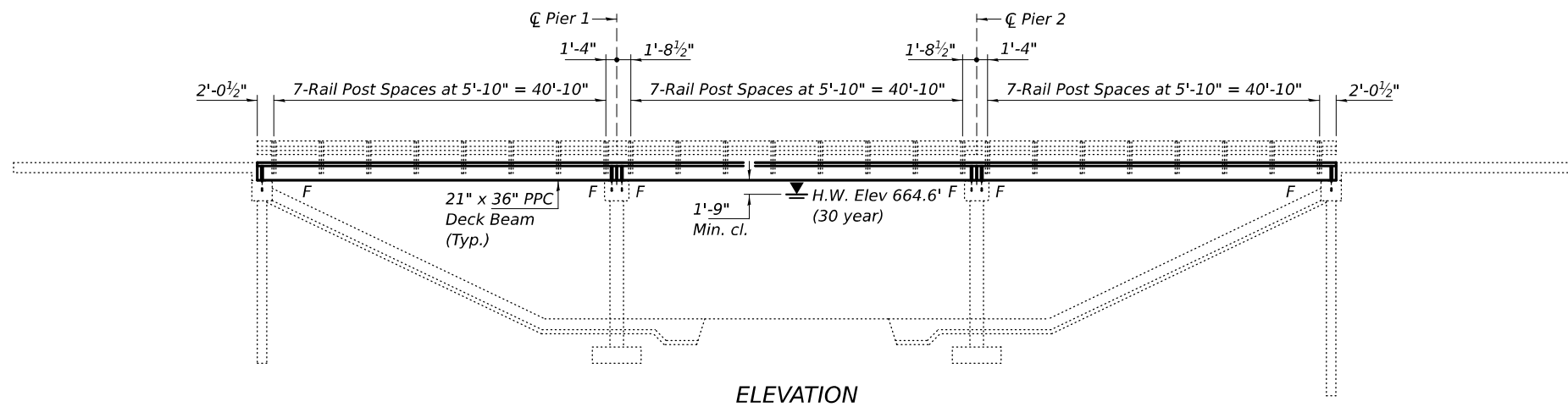
FIELD UNITS

f'c = 5,000 psi (Superstructure)
fy = 60,000 psi (Reinforcement)
fy = 50,000 psi (M270 Grade 50)

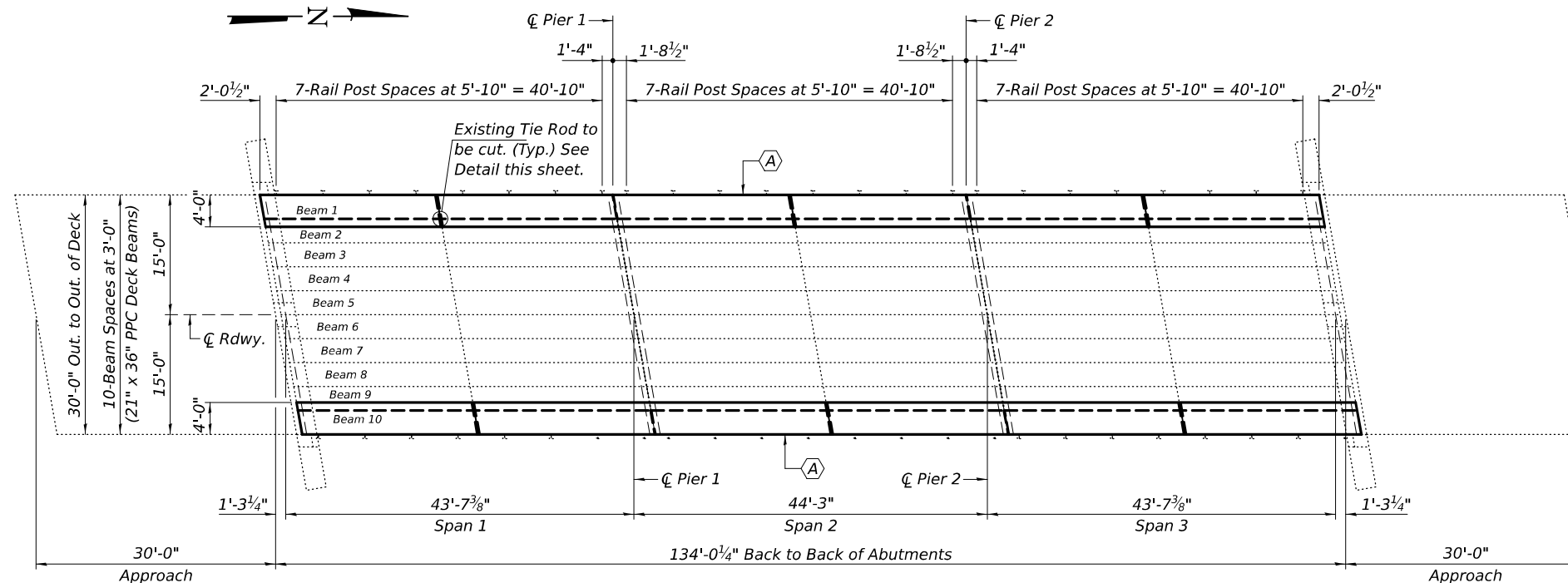
TOTAL BILL OF MATERIAL

ITEM	UNIT	QUANTITY
Removal of Existing PPC Deck Beams	Sq. Ft.	795
Precast Prestressed Concrete Deck Beams (21" Depth)	Sq. Ft.	795
Concrete Wearing Surface Removal	Sq. Yd.	119
Concrete Wearing Surface	Sq. Yd.	119
Reinforcement Bars, Epoxy Coated	Pound	1530
Mechanical Splicers	Each	268
Removing & Re-Erecting Existing Railing	Foot	265
* Protective Coat	Sq. Yd.	119

* Applied on new concrete only.

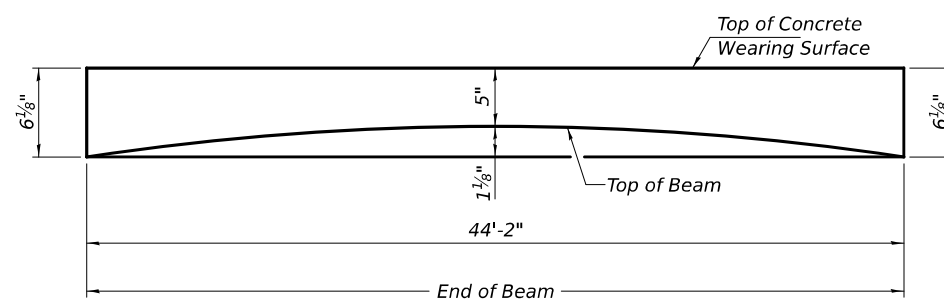


ELEVATION

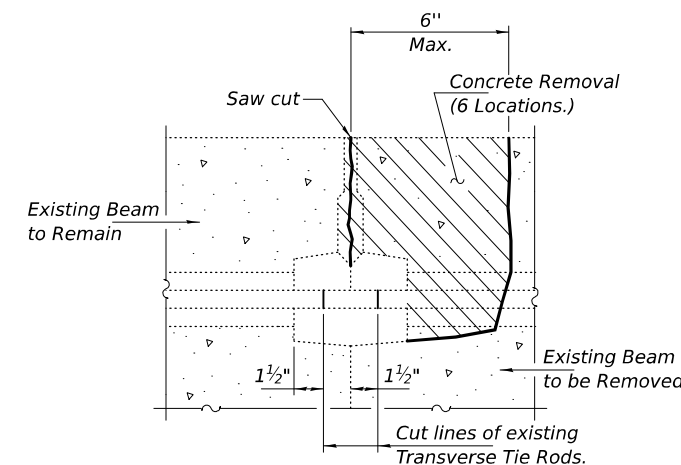


PLAN

(A) - All 6 Existing 21" x 36" Fascia Deck Beams and 4'-0" of the Concrete Wearing Surface to be Removed & Replaced.



ANTICIPATED INITIAL CAMBER DIAGRAM & CONCRETE WEARING SURFACE PROFILE



BEAM REMOVAL DETAIL AT TRANSVERSE TIES



Expires: November 30, 2026

MODEL: 70H61-004
FILE NAME: p:\i\dot-pw-bentley.com\FWIDOT\Documents\IDOT_O_ces\Bureau of Bridges and Structures\OBM Projects\0100220\CADDData\Structures\0100220.dgn

DESIGNED - Chi-Cheung Chau	EXAMINED - [Signature]
CHECKED - Stephen M. Ryan	PASSED - [Signature]
DRAWN - STEFFEN	
CHECKED - CCC SMR	

DATE - JANUARY 20, 2026
ENGINEER OF STRUCTURAL SERVICES
JUSTIN W. MANN
081-005947
ACTING ENGINEER OF BRIDGES AND STRUCTURES

REVISD -
REVISD -

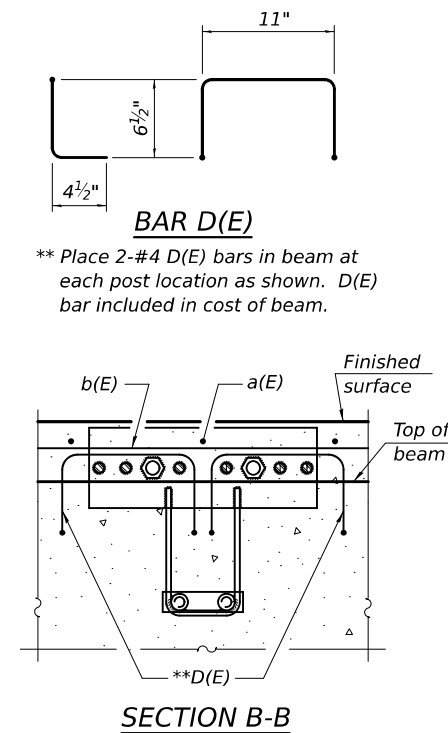
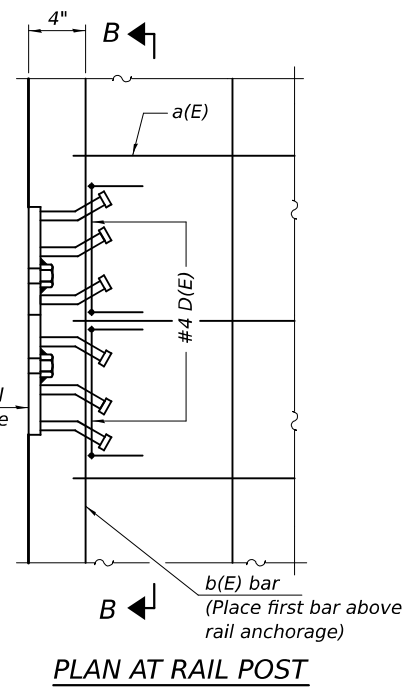
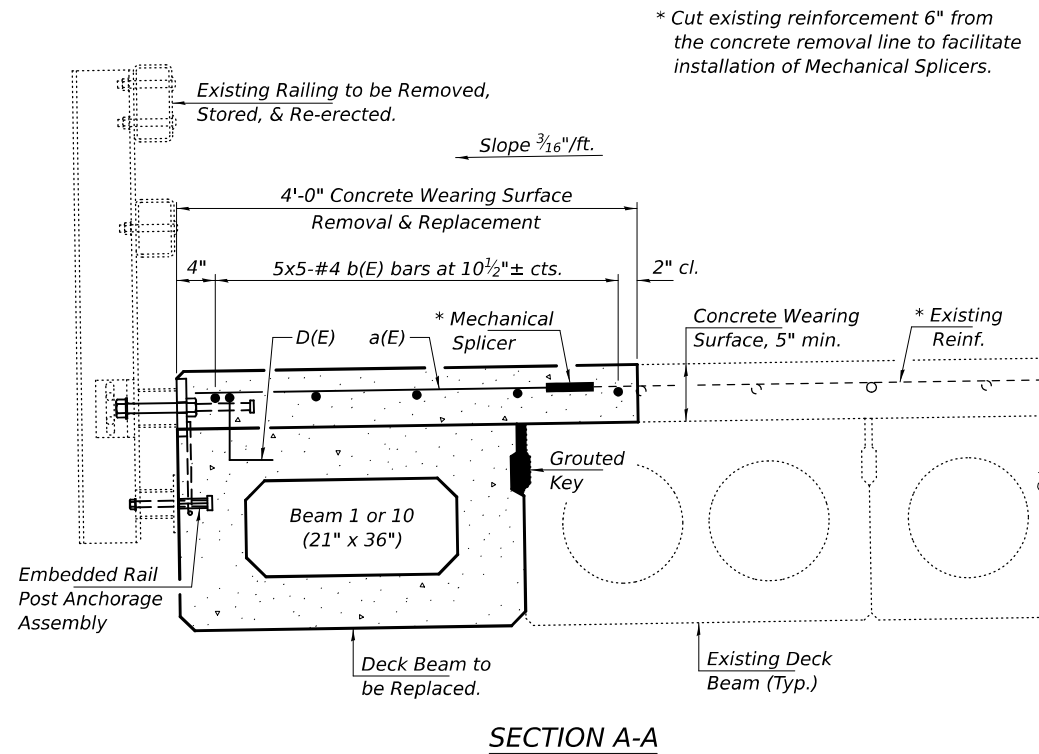
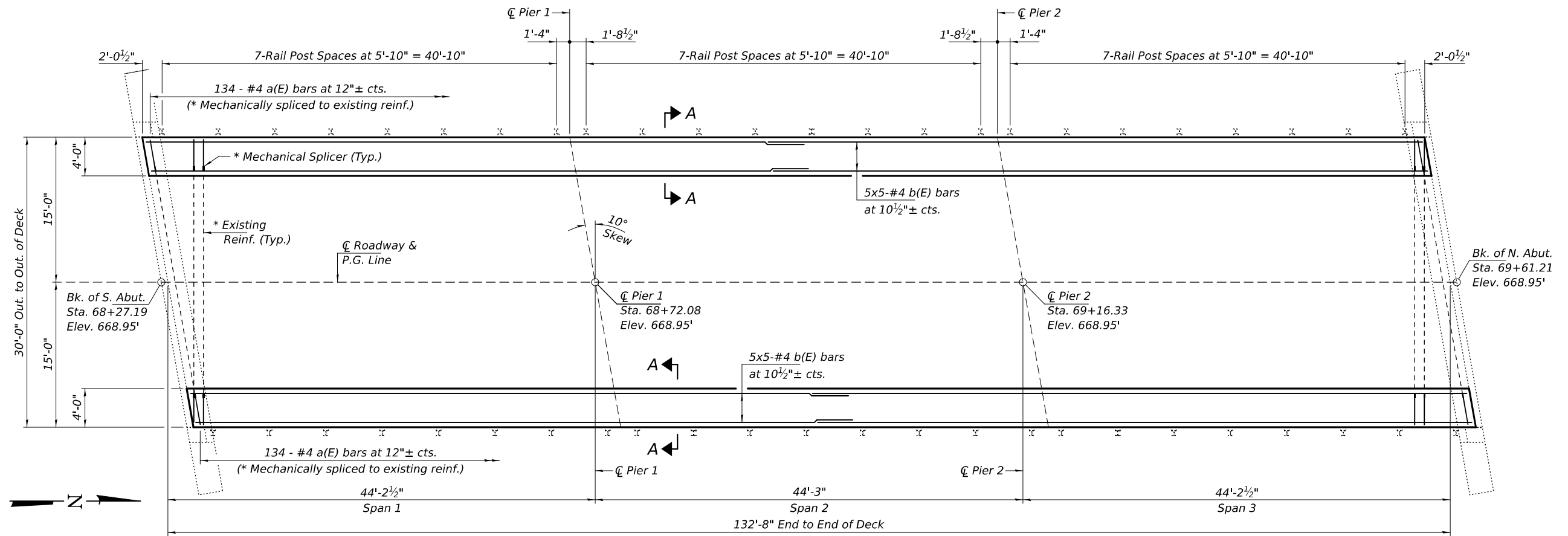
STATE OF ILLINOIS
DEPARTMENT OF TRANSPORTATION

GENERAL PLAN AND ELEVATION
ST. JOSEPH ROAD OVER SALT FORK RIVER
SN 010-0220

SHEET 1 OF 7 SHEETS

F.A.S. RTE.	SECTION	COUNTY	TOTAL SHEETS	SHEET NO.
516	(240B)BR-1	CHAMPAIGN	13	4
CONTRACT NO. 70H61				
ILLINOIS / FED. AID PROJECT				

1/20/2026 2:23:29 PM



MINIMUM BAR LAP
#4 Bars = 1'-8"

BILL OF MATERIAL

Bar	No.	Size	Length	Shape
a(E)	268	#4	3'-4"	
b(E)	50	#4	27'-10"	
Concrete Wearing Surface Removal			Sq. Yd.	119
Concrete Wearing Surface			Sq. Yd.	119
Mechanical Splicers			Each	268
Reinforcement Bars, Epoxy Coated			Pound	1530

Bars indicated thus 5 x 5-#4 etc. indicates 5 lines of bars with 5 lengths per line.

MODEL: 70H61-005
FILE NAME: p:\dot-pw-bentley.com\FWIDOT\Documents\OBM Projects\0100220\CADData\Structures\0100220.dgn
1/20/2026 2:23:31 PM

DESIGNED - CCC
CHECKED - SMR
DRAWN - STEFFEN
CHECKED - CCC SMR

EXAMINED
ENGINEER OF STRUCTURAL SERVICES
PASSED
Quater W. Mann
ACTING ENGINEER OF BRIDGES AND STRUCTURES

DATE - JANUARY 20, 2026
REVISED -
REVISED -

STATE OF ILLINOIS
DEPARTMENT OF TRANSPORTATION

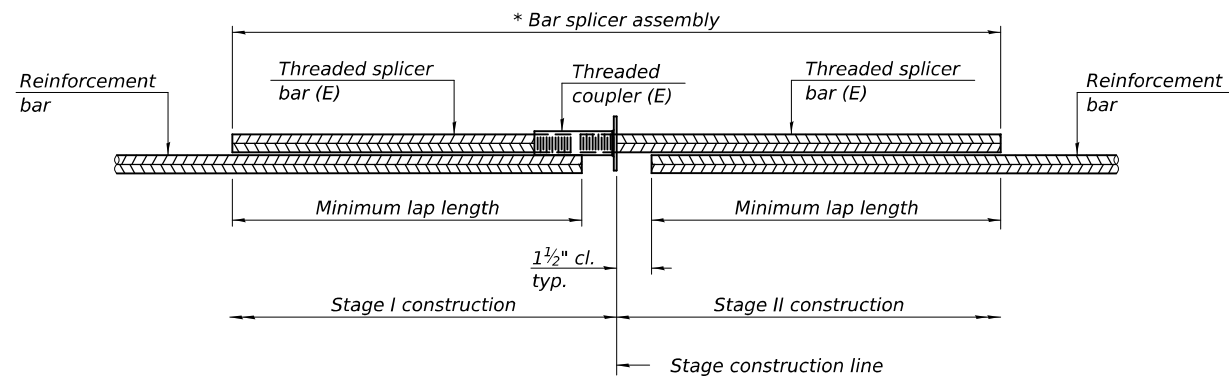
CONCRETE WEARING SURFACE DETAILS
SN 010-0220

SHEET 2 OF 7 SHEETS

F.A.S. RTE.	SECTION	COUNTY	TOTAL SHEETS	SHEET NO.
516	(240B)BR-1	CHAMPAIGN	13	5

CONTRACT NO. 70H61

ILLINOIS FED. AID PROJECT

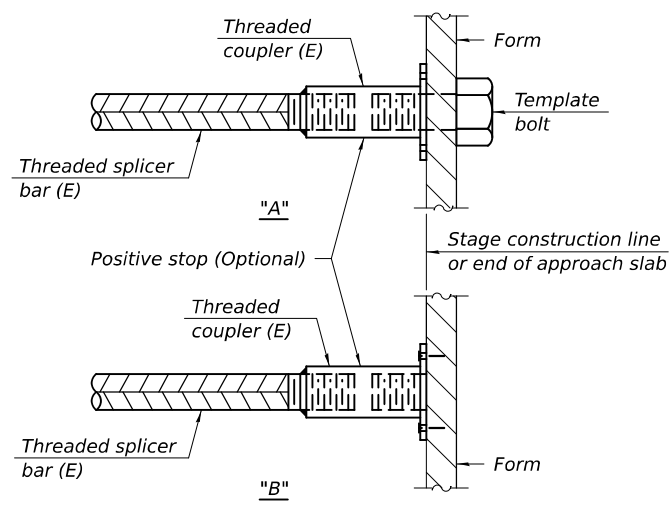


STANDARD BAR SPLICER ASSEMBLY PLAN
 Only bar splicer assemblies as presented on the approved QPL list may be used.

Threaded splicer bar length = min. lap length + 1 1/2" + thread length

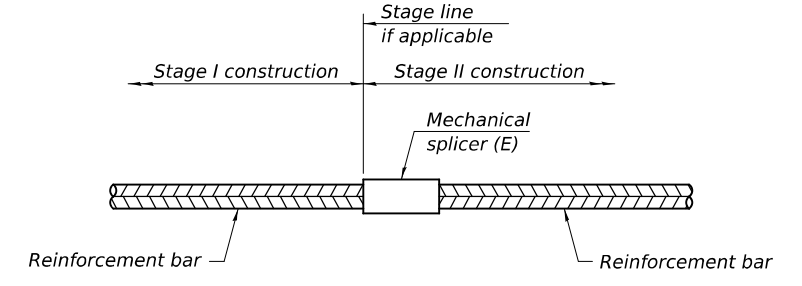
* Epoxy not required on Bar Splicer Assembly components used in conjunction with black bars.

Location	Bar size	No. assemblies required	Minimum lap length



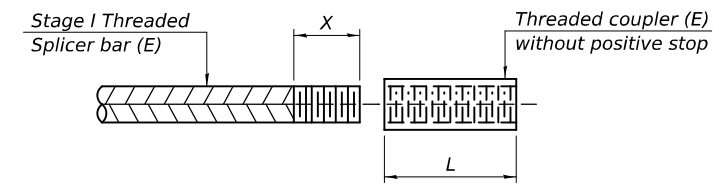
INSTALLATION AND SETTING METHODS

"A" : Set bar splicer assembly by means of a template bolt.
 "B" : Set bar splicer assembly by nailing to wood forms or cementing to steel forms.
 (E) : Indicates epoxy coating.



STANDARD MECHANICAL SPLICER

Location	Bar size	No. assemblies required
Concrete Wearing Surface	#4	268



THREADING OF ASSEMBLIES

The threaded length "X" shall be no more than L/2. The bar should be tightened until 0-1 thread(s) is/are exposed.

Notes:
 Splicer bars shall be deformed with threaded ends and have a minimum 60 ksi yield strength.
 All reinforcement shall be lapped and tied to the splicer bars.
 Bar splicer assemblies shall be epoxy coated according to the requirements for reinforcement bars. See Section 508 of the Standard Specifications.
 See approved list of bar splicer assemblies and mechanical splicers for alternatives.

MODEL: 70H61-006
 FILE NAME: p:\dot-pw-bentley.com\FWIDOT\Documents\OBM Projects\0100220\CADData\Structures\0100220.dgn

BSD-1 4-4-2025

DESIGNED - CCC	EXAMINED
CHECKED - SMR	PASSED
DRAWN - STEFFEN	
CHECKED - CCC SMR	

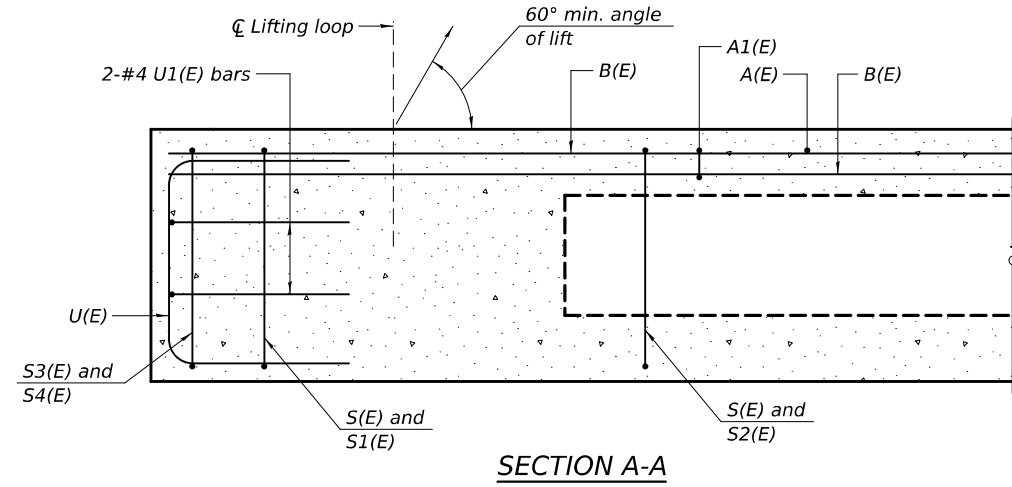
DATE - JANUARY 20, 2026	REVISOR
	REVISION
	REVISION

STATE OF ILLINOIS
 DEPARTMENT OF TRANSPORTATION

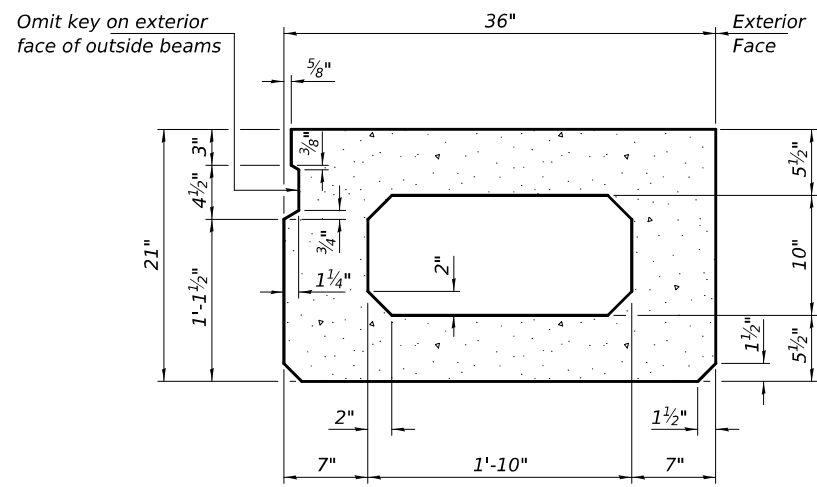
BAR SPLICER ASSEMBLY AND MECHANICAL SPLICER DETAILS
 SN 010-0220
 SHEET 3 OF 7 SHEETS

F.A.S. RTE.	SECTION	COUNTY	TOTAL SHEETS	SHEET NO.
516	(240B)BR-1	CHAMPAIGN	13	6
CONTRACT NO. 70H61				
ILLINOIS FED. AID PROJECT				

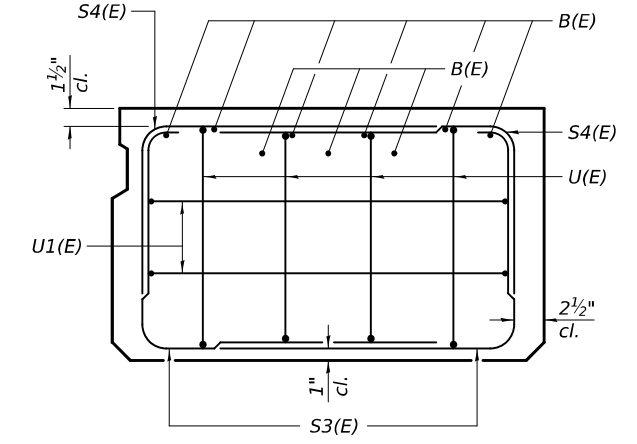
MODEL: 70H61-008
 FILE NAME: p:\dot-pw-bentley.com\FWIDOT\Documents\DOT_O_ces\Bureau of Bridges and Structures\OBM Projects\0100220\CADData\Structures\0100220.dgn



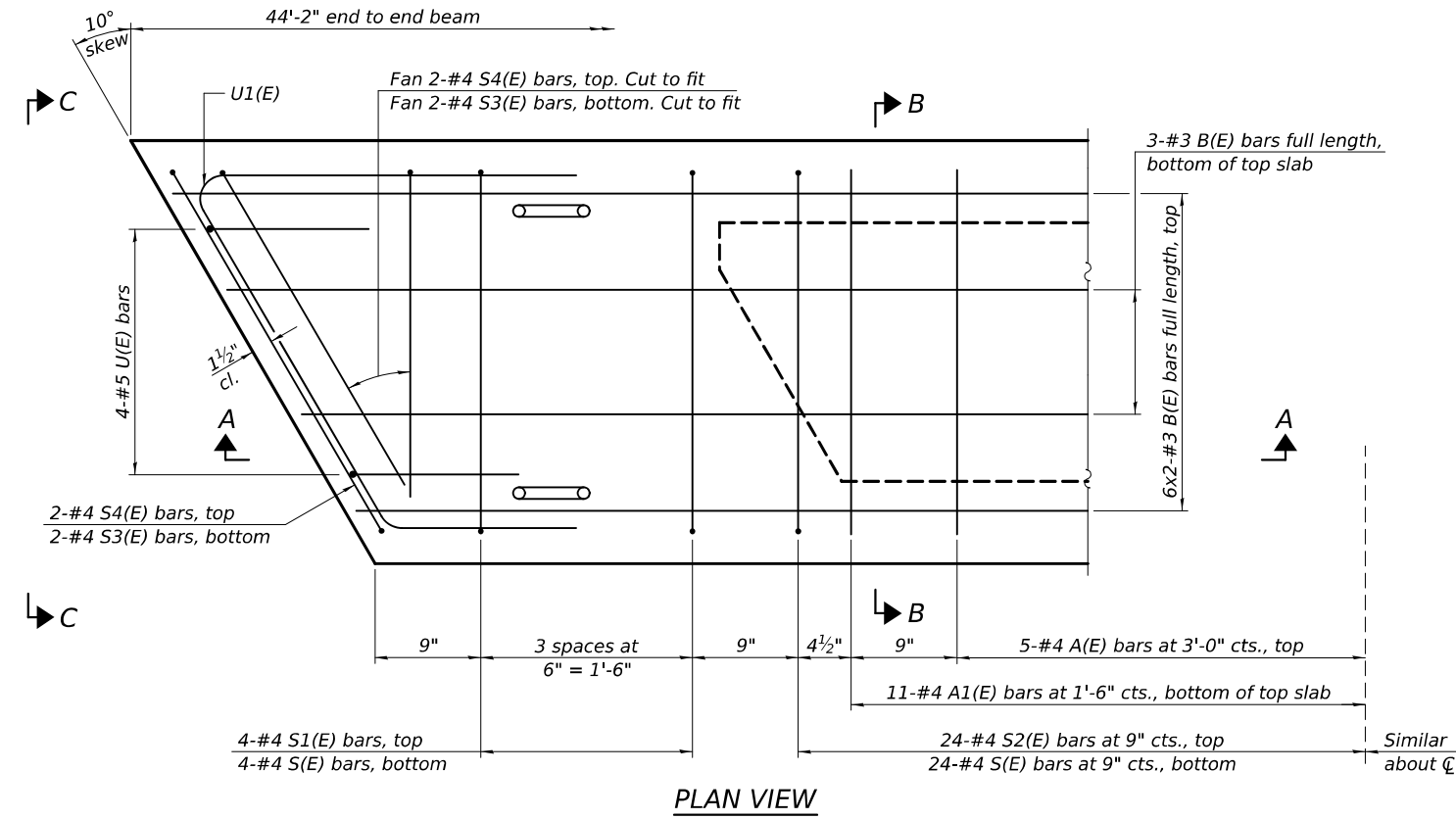
SECTION A-A



SECTION B-B
(Showing dimensions)

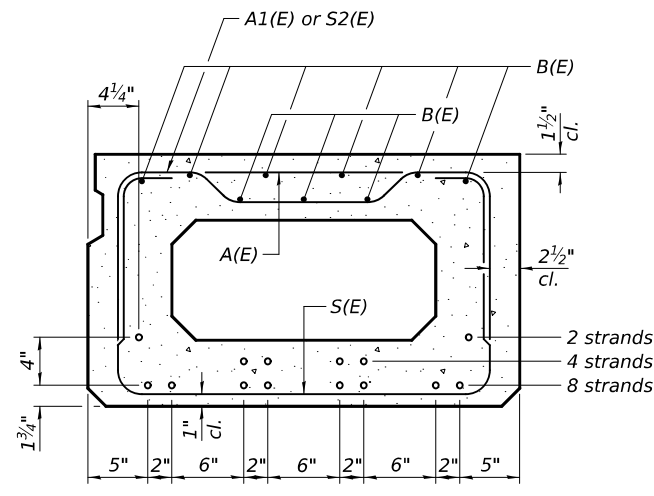


VIEW C-C



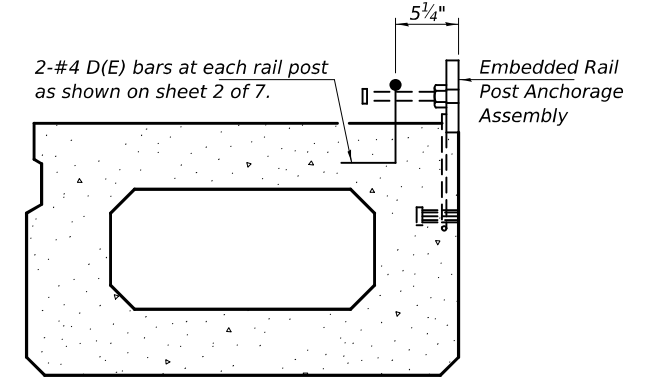
PLAN VIEW

Note:
 Spacing of S(E) and S2(E) bars may be adjusted up to 4" in the immediate area of the transverse tie diaphragms to miss the block outs for the transverse ties.



SECTION B-B
(Showing reinforcement and permissible strand locations)

Note:
 Place the number of strands specified in each row symmetrically about the centerline of beam in the permissible strand locations shown.



SECTION AT RAIL POST
 See Section B-B for Dimensions & Reinforcement Details not shown.

MINIMUM BAR LAP
 #3 bar = 1'-4"

BAR LIST
 ONE BEAM ONLY
 (For information only)

Bar	No.	Size	Length	Shape
A(E)	10	#4	2'-7"	—
A1(E)	22	#4	2'-10"	—
B(E)	18	#3	22'-9"	—
D(E)	16	#4	2'-9"	L
S(E)	56	#4	6'-5"	U
S1(E)	8	#4	4'-11"	U
S2(E)	48	#4	5'-2"	U
S3(E)	8	#4	4'-4"	U
S4(E)	8	#4	3'-7"	U
U(E)	8	#5	4'-0"	C
U1(E)	4	#4	5'-8"	C

Note:
 See sheet 6 of 7 for additional details and Bill of Material.

DESIGNED - CCC	EXAMINED	DATE - JANUARY 20, 2026
CHECKED - SMR	ENGINEER OF STRUCTURAL SERVICES	
DRAWN - STEFFEN	PASSED	REVISER -
CHECKED - CCC SMR	ACTING ENGINEER OF BRIDGES AND STRUCTURES	REVISER -

STATE OF ILLINOIS
 DEPARTMENT OF TRANSPORTATION

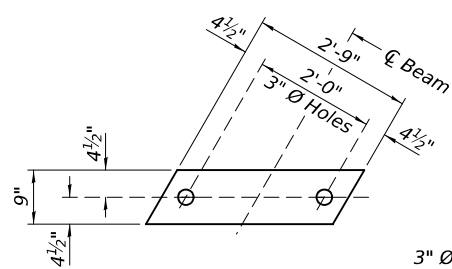
DATE - JANUARY 20, 2026
 REVISER -
 REVISER -

STATE OF ILLINOIS
 DEPARTMENT OF TRANSPORTATION

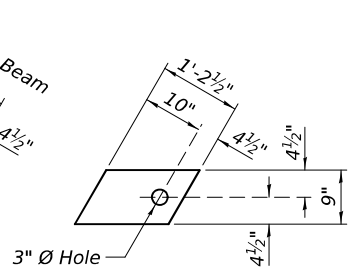
21" x 36" PPC DECK BEAM
 SN 010-0220

SHEET 5 OF 7 SHEETS

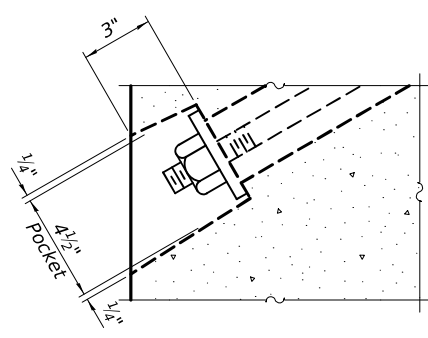
F.A.S. RTE.	SECTION	COUNTY	TOTAL SHEETS	SHEET NO.
516	(240B)BR-1	CHAMPAIGN	13	8
CONTRACT NO. 70H61				
ILLINOIS FED. AID PROJECT				



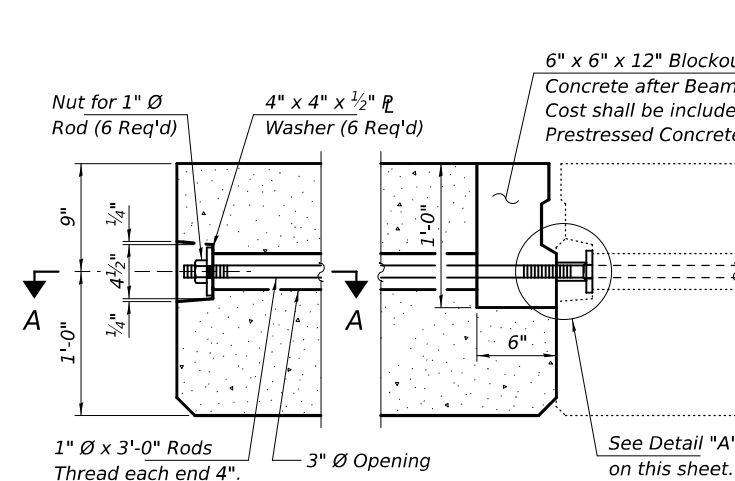
FABRIC BEARING PAD & STEEL BEARING PLATE



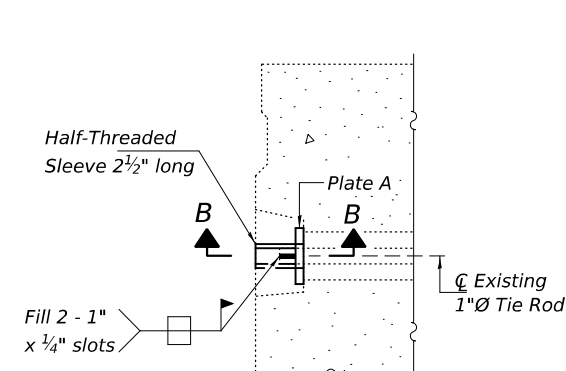
FABRIC ADJUSTING SHIM



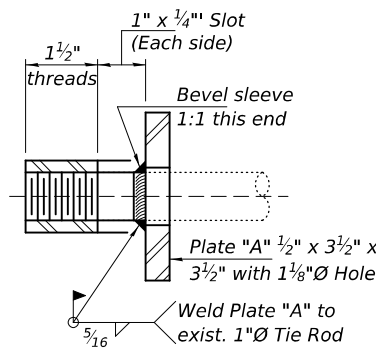
SECTION A-A



TRANSVERSE TIE ASSEMBLY



DETAIL A



SECTION A-A

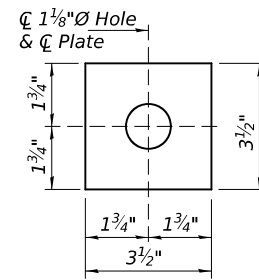
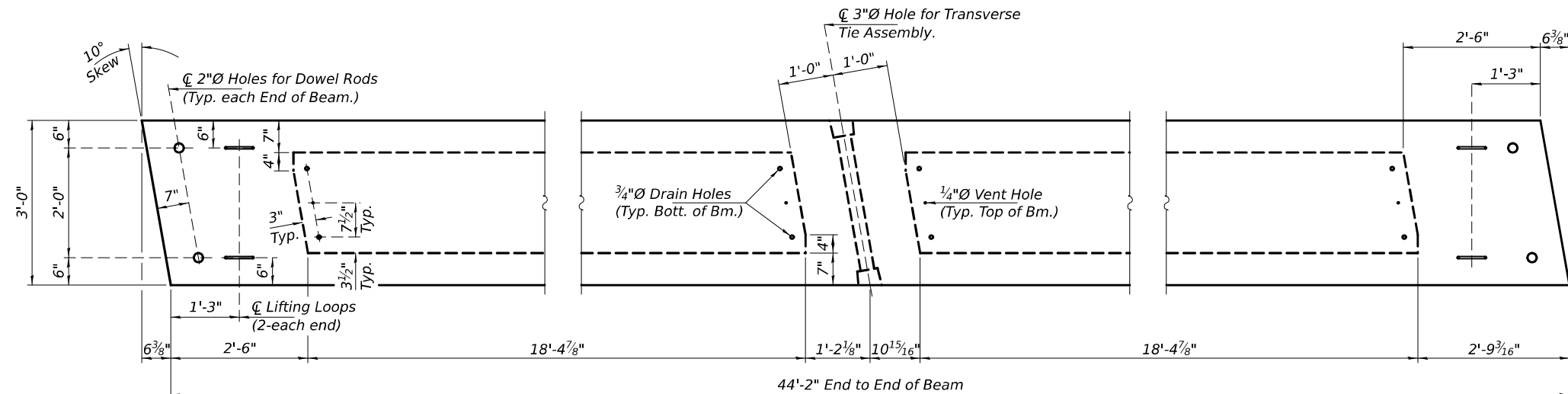


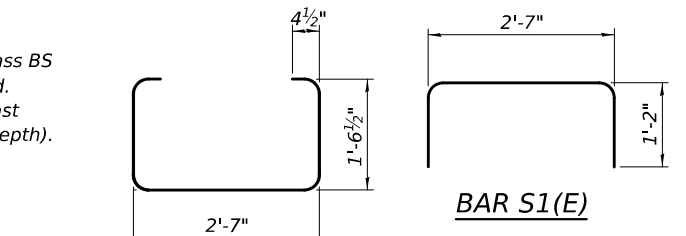
PLATE "A"
(1 Required per Beam; 6 Total.)



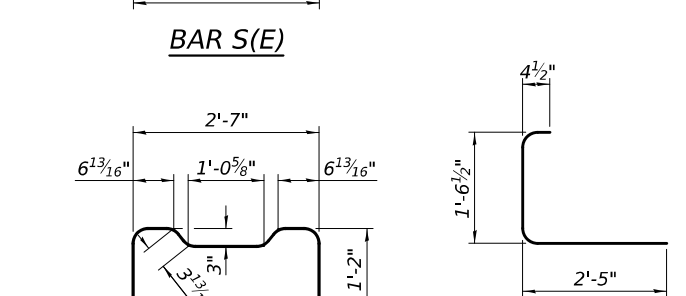
BEAM PLAN
(6-Required)

NOTES

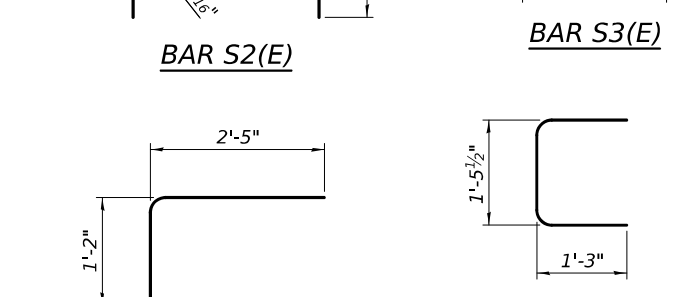
- Prestressing steel shall be uncoated high strength, low relaxation 7-wire strand, Grade 270. The nominal diameter shall be 1/2 in. and the nominal cross-sectional area shall be 0.153 sq. in. The 1" Ø rods in the transverse tie assembly shall be tightened to a snug fit and the threads set. Pockets on exterior faces of bridge shall be filled with grout after transverse tie assembly is in place.
- Two 3/8" fabric adjusting shims of the dimensions of the exterior bearing pad shall be provided for each bearing pad location.
- A minimum 2 1/2" Ø lifting pin shall be used to engage the lifting loops during handling.
- Corrosion Inhibitor, per Article 1020.05(b)(10) and 1021.07 of the Standard Specifications, shall be used in the concrete for precast prestressed concrete deck beams.
- Compressive strength of prestressed concrete, f'c, shall be 6000 psi.
- Compressive strength of prestressed concrete at release, f'ci, shall be 5000 psi.



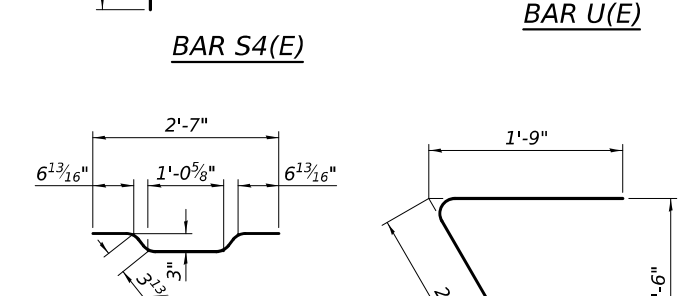
BAR S1(E)



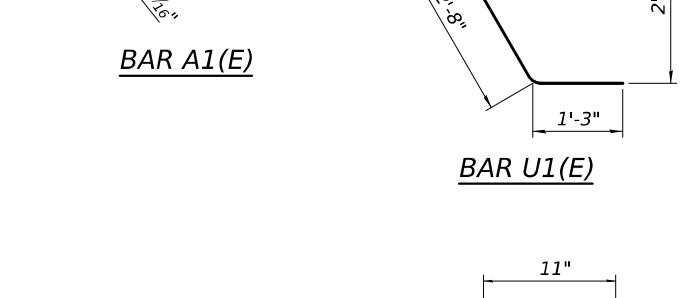
BAR S(E)



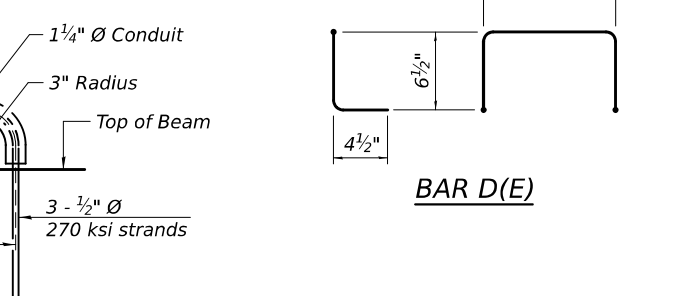
BAR S2(E)



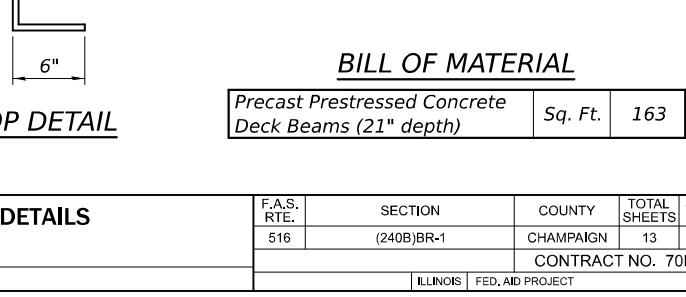
BAR S3(E)



BAR S4(E)



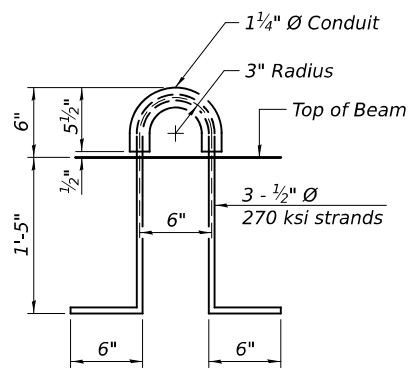
BAR U(E)



BAR U1(E)



BAR D(E)



LIFTING LOOP DETAIL

BILL OF MATERIAL

Precast Prestressed Concrete Deck Beams (21" depth)	Sq. Ft.	163
---	---------	-----

MODEL: 70H61-009
FILE NAME: p:\w\j\dot-pw-bentley.com\FWIDOT\Documents\OBM Projects\100220\CADData\Structures\0100220.dgn
1/20/2026 2:23:36 PM

DESIGNED - CCC	EXAMINED
CHECKED - SMR	PASSED
DRAWN - STEFFEN	
CHECKED - CCC SMR	

DATE - JANUARY 20, 2026
ENGINEER OF STRUCTURAL SERVICES
Quater W. Mann
ACTING ENGINEER OF BRIDGES AND STRUCTURES

REVISD -
REVISD -

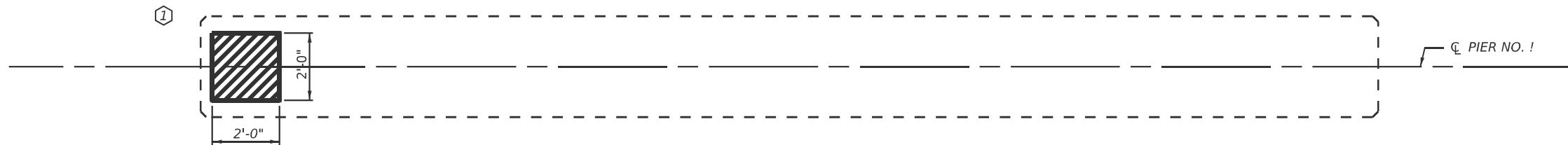
STATE OF ILLINOIS
DEPARTMENT OF TRANSPORTATION

21" x 36" PPC DECK BEAM DETAILS
SN 010-0220

SHEET 6 OF 7 SHEETS

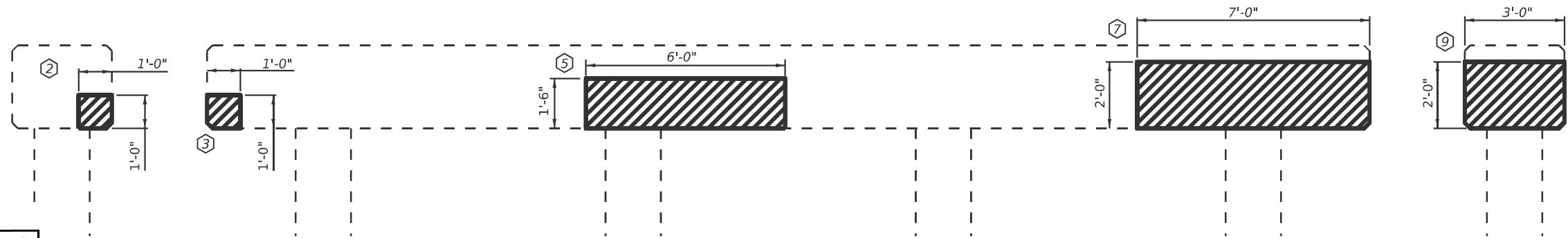
F.A.S. RTE. 516	SECTION (240B)BR-1	COUNTY CHAMPAIGN	TOTAL SHEETS 13	SHEET NO. 9
CONTRACT NO. 70H61			ILLINOIS FED. AID PROJECT	

STRUCTURAL CONCRETE REPAIR PIER NO. 1



PLAN PIER NO. 1

END VIEW

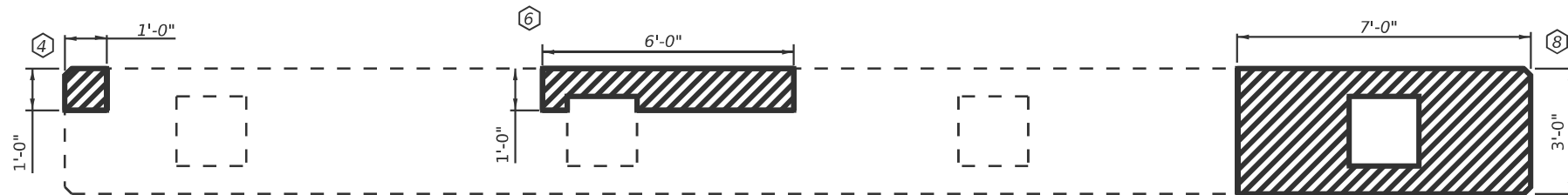


ELEVATION PIER NO. 1
(SOUTH FACE LOOKNG NORTH)

END VIEW

PATCH NO.	SIZE		STRUCTURAL REPAIR OF CONC $\leq 5''$ SQ FT
	LENGTH (FT)	WIDTH (FT)	
1	2	2	4.0
2	1	1	1.0
3	1	1	1.0
4	1	1	1.0
5	6	1.5	9.0
6	6	1	6.0
7	7	2	14.0
8	7	3	21.0

SUB-TOTAL =	57.0
-------------	------



PLAN PIER NO. 1 (BOTTOM)

BILL OF MATERIALS

ITEM	UNIT	TOTAL
STRUCTURAL REPAIR OF CONCRETE $\leq 5''$	SQ. FT.	57.0

MODEL: SRC DETAIL_1 (Sheet)
FILE NAME: c:\pwworking\sheronj\mtd10759568\70H61-shr-StructurePlans.dgn

USER NAME = Jeff.Sherer	DESIGNED -	REVISED -
	DRAWN -	REVISED -
	CHECKED -	REVISED -
PLOT DATE = 12/2/2025	DATE -	REVISED -

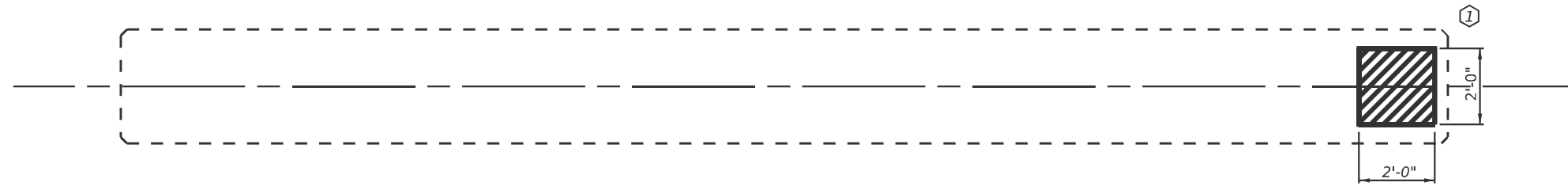
**STATE OF ILLINOIS
DEPARTMENT OF TRANSPORTATION**

**DETAIL OF STRUCTURAL CONCRETE REPAIR
S.N. 010-0220**

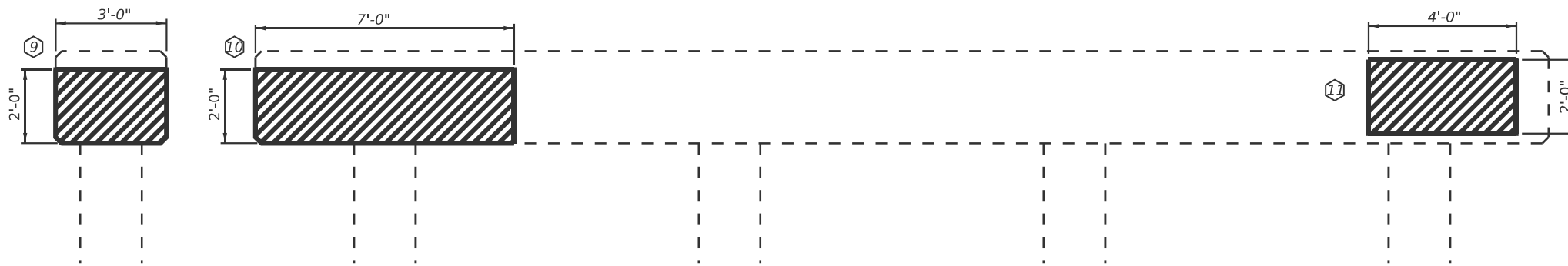
SCALE: NONE SHEET 1 OF 4 SHEETS STA. TO STA.

F.A.S RTE.	SECTION	COUNTY	TOTAL SHEETS	SHEET NO.
516	(240B)BR-1	VERMILION	15	11
CONTRACT NO. 70H61				
ILLINOIS FED. AID PROJECT				

STRUCTURAL CONCRETE REPAIR PIER NO. 1

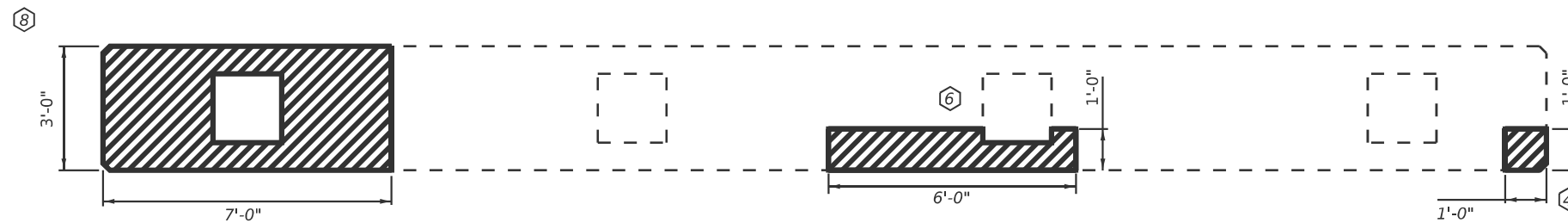


PLAN PIER NO. 1



END VIEW

ELEVATION PIER NO. 1
(NORTH FACE LOOKING SOUTH)



PLAN PIER NO. 1 (BOTTOM)

PATCH NO.	SIZE		STRUCTURAL REPAIR OF CONC $\leq 5'$ SQ FT
	LENGTH (FT)	WIDTH (F')	
9	3	2	6.0
10	7	2	14.0
11	4	2	8.0

SUB-TOTAL =	28.0
-------------	------

BILL OF MATERIALS

ITEM	UNIT	TOTAL
STRUCTURAL REPAIR OF CONCRETE $\leq 5'$	SQ. FT.	28.0

MODEL: SRC DETAIL 2 (Sheet)
FILE NAME: c:\pwworking\dstherner\mtd10759568\70H61-shr-StructurePlans.dgn

USER NAME = Jeff.Sherer	DESIGNED -	REVISED -	
	DRAWN -	REVISED -	
	CHECKED -	REVISED -	
PLOT DATE = 12/2/2025	DATE -	REVISED -	

STATE OF ILLINOIS
DEPARTMENT OF TRANSPORTATION

DETAIL OF STRUCTURAL CONCRETE REPAIR
S.N. 010-0220

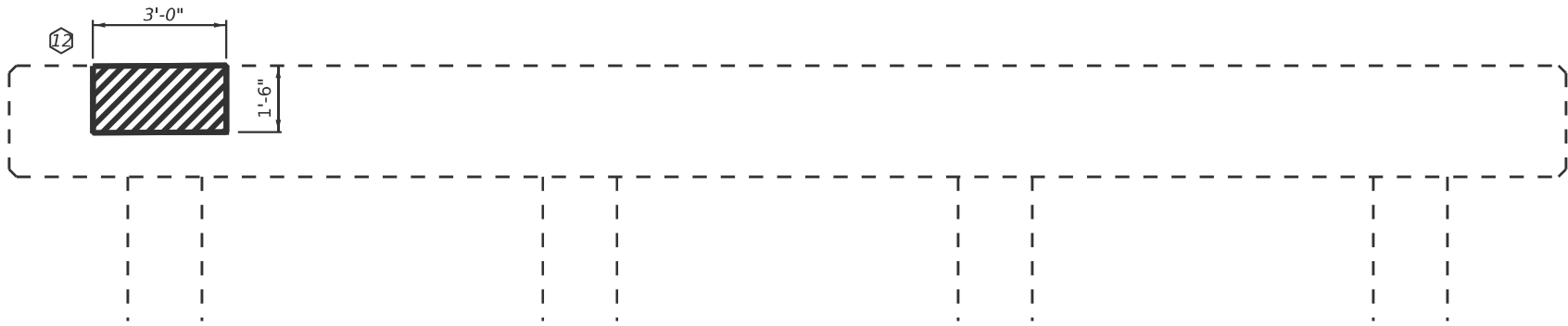
SCALE: NONE SHEET 2 OF 4 SHEETS STA. TO STA.

F.A.S. RTE.	SECTION	COUNTY	TOTAL SHEETS	SHEET NO.
516	(240B)BR-1	VERMILION	15	12
CONTRACT NO. 70H61				
ILLINOIS FED. AID PROJECT				

STRUCTURAL CONCRETE REPAIR PIER NO. 2



PLAN PIER NO. 2



ELEVATION PIER NO. 2
(SOUTH FACE LOOKING NORTH)

PATCH NO.	SIZE		STRUCTURAL REPAIR OF CONC \leq 5"
	LENGTH (FT)	WIDTH (FT)	
12	3	1.5	4.5

SUB-TOTAL =	4.5
-------------	-----

USE =	5.0
-------	-----

BILL OF MATERIALS

ITEM	UNIT	TOTAL
STRUCTURAL REPAIR OF CONCRETE \leq 5"	SQ. FT.	5.0

MODEL: SRC DETAIL 3 (Sheet)
FILE NAME: c:\pwworking\dsthsherej\mtd10759568\70H61-shh-StructurePlans.dgn

USER NAME = Jeff.Sherer	DESIGNED -	REVISED -
	DRAWN -	REVISED -
	CHECKED -	REVISED -
PLOT DATE = 12/2/2025	DATE -	REVISED -

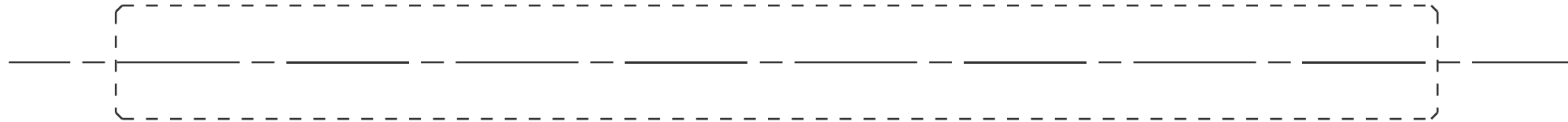
**STATE OF ILLINOIS
DEPARTMENT OF TRANSPORTATION**

**STRUCTURAL REPAIR OF CONCRETE
S.N. 010-0220**

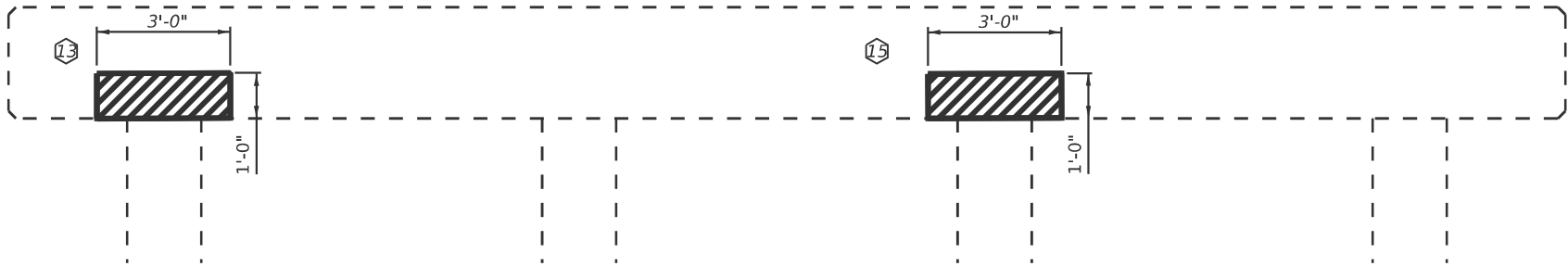
SCALE: NONE SHEET 3 OF 4 SHEETS STA. TO STA.

F.A.S. RTE.	SECTION	COUNTY	TOTAL SHEETS	SHEET NO.
516	(240B)BR-1	VERMILION	15	13
CONTRACT NO. 70H61				
ILLINOIS FED. AID PROJECT				

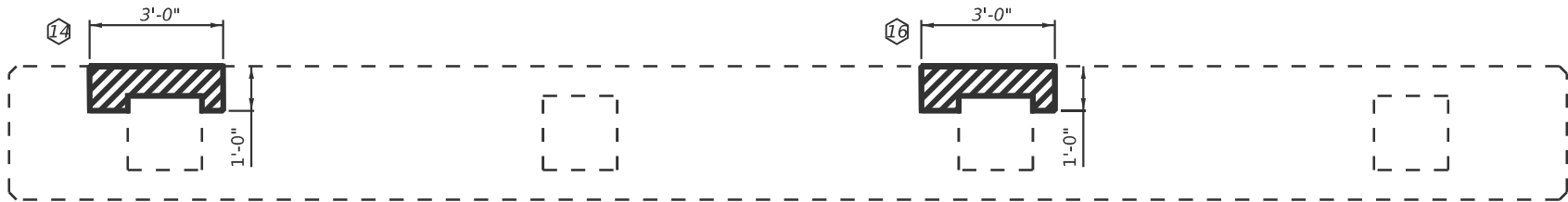
STRUCTURAL CONCRETE REPAIR PIER NO. 2



PLAN PIER NO. 2



ELEVATION PIER NO. 2
(NORTH FACE LOOKING SOUTH)



PLAN PIER NO. 2 (BOTTOM)

PATCH NO.	SIZE		STRUCTURAL REPAIR OF CONC $\leq 5''$ SQ FT
	LENGTH (FT)	WIDTH (FT)	
13	3	1	3.0
14	3	1	3.0
15	3	1	3.0
16	3	1	3.0

SUB-TOTAL =	12.0
-------------	------

BILL OF MATERIALS

ITEM	UNIT	TOTAL
STRUCTURAL REPAIR OF CONCRETE $\leq 5''$	SQ. FT.	12.0

MODEL: SRC DETAIL 4 (Sheet)
FILE NAME: c:\pwworking\dstsherej\mtd10759568\70H61-shr-StructurePlans.dgn

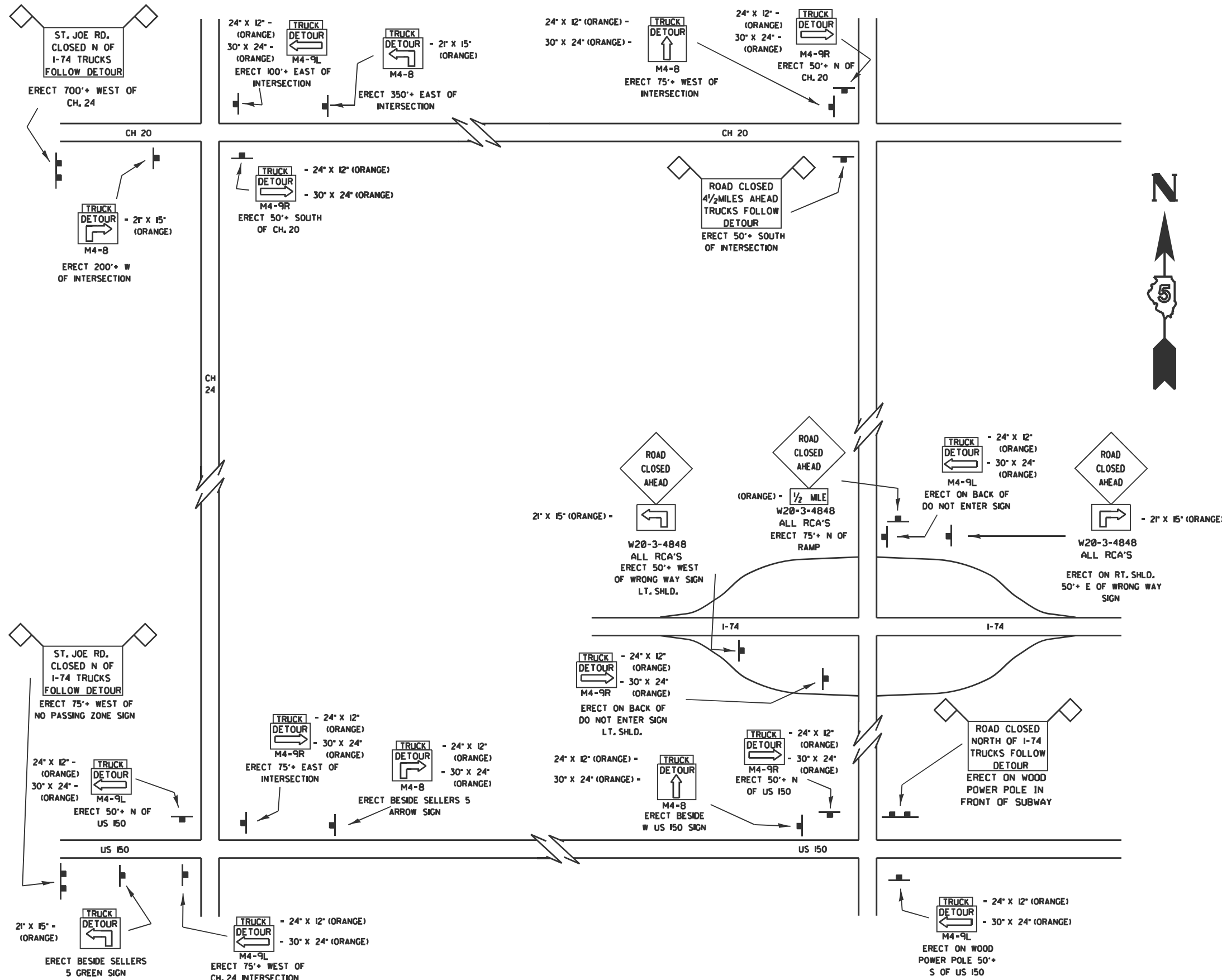
USER NAME = Jeff.Sherer	DESIGNED -	REVISED -
	DRAWN -	REVISED -
	CHECKED -	REVISED -
PLOT DATE = 12/2/2025	DATE -	REVISED -

**STATE OF ILLINOIS
DEPARTMENT OF TRANSPORTATION**

**STRUCTURAL REPAIR OF CONCRETE
S.N. 010-0220**

SCALE: NONE SHEET 4 OF 4 SHEETS STA. TO STA.

F.A.S. RTE.	SECTION	COUNTY	TOTAL SHEETS	SHEET NO.
516	(240B)BR-1	VERMILION	15	14
ILLINOIS FED. AID PROJECT			CONTRACT NO. 70H61	



MODEL: Detour Detail (Sheet)
 FILE NAME: c:\pwworking\shs\shs\mtd1075956\70H6-1-shs\StructurePlans.dgn

USER NAME = Jeff.Sherer	DESIGNED -	REVISED -
	DRAWN -	REVISED -
	CHECKED -	REVISED -
PLOT DATE = 12/2/2025	DATE -	REVISED -

STATE OF ILLINOIS
DEPARTMENT OF TRANSPORTATION

TRAFFIC CONTROL & PROTECTION
TEMPORARY DETOUR

F.A.S. RTE.	SECTION	COUNTY	TOTAL SHEETS	SHEET NO.
516	(240B)BR-1	CHAMPAIGN	15	15
CONTRACT NO. 70H61				
ILLINOIS FED. AID PROJECT				

SCALE: NONE SHEET 1 OF 1 SHEETS STA. TO STA.