

STATE OF ILLINOIS
DEPARTMENT OF TRANSPORTATION

F.A.I. RTE.	SECTION	COUNTY	TOTAL SHEETS	SHEET NO.
72	(84-9-3,84-10)-2	SANGAMON	6	1
		ILLINOIS	CONTRACT NO. 72546	

FOR INDEX OF SHEETS, SEE SHEET NO. 2

PROPOSED IMPROVEMENTS

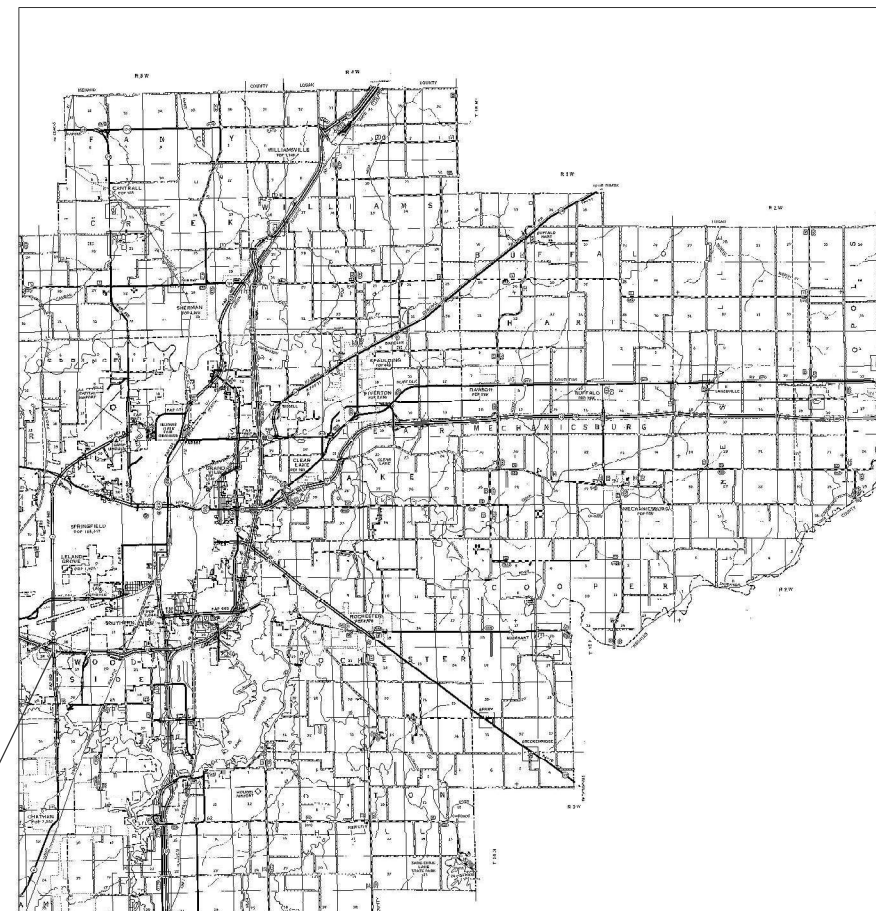
FAI 72 (I 72)
SECTION: (84-9-3,84-10)I-2
PROJECT: STATE DRAINAGE
SANGAMON CO.

C-96-039-26

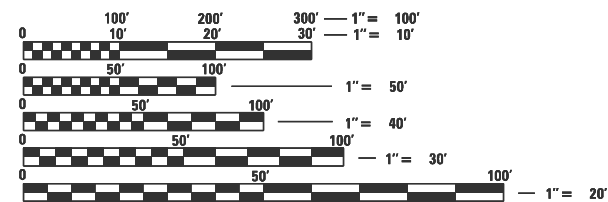
D-96-010-26



155 (2023)
ADT = 26,400
SU = 1,400
MU = 5,600



END PROJECT
I 72 STRUCTURE
084-0162



FULL SIZE PLANS HAVE BEEN PREPARED USING STANDARD ENGINEERING SCALES. REDUCED SIZED PLANS WILL NOT CONFORM TO STANDARD SCALES. IN MAKING MEASUREMENTS ON REDUCED PLANS, THE ABOVE SCALES MAY BE USED.

J.U.L.I.E.
JOINT UTILITY LOCATION INFORMATION FOR EXCAVATION
1-800-892-0123
OR 811

BEGIN PROJECT
I 72 STRUCTURE
084-0136
& 084-0137

PROJECT ENGINEER : MIKE HAMBY - (217)524-7765
PROJECT MANAGER : TIM SHARP - (217)524-9160

CONTRACT NO. 72546

STATE OF ILLINOIS
DEPARTMENT OF TRANSPORTATION

SUBMITTED December 9 2025
Teresa C. Price
REGION FOUR ENGINEER

January 23 2026
[Signature]
ENGINEER OF DESIGN AND ENVIRONMENT

January 23 2026
[Signature]
DIRECTOR OF HIGHWAYS PROJECT IMPLEMENTATION

PRINTED BY THE AUTHORITY
OF THE STATE OF ILLINOIS

INDEX OF SHEETS

SHEET NO.	DESCRIPTION
1.	COVER SHEET
2.	INDEX OF SHEETS, STANDARDS, GENERAL NOTES & SIGNATURE
3.	SUMMARY OF QUANTITIES
4-5.	PROJECT LOCATION MAP
6.	SCHEDULES

STANDARDS

STANDARD NO.	DESCRIPTION
701101-05	OFF-RD OPERATIONS, MULTILANE 15' (4.5m) TO 24' (600mm) FROM PAVEMENT EDGE
701106-02	OFF-RD OPERATIONS, MULTILANE, MORE THAN 15' (4.5m) AWAY
701901-11	TRAFFIC CONTROL DEVICES

STATE OF ILLINOIS DEPARTMENT OF TRANSPORTATION DIVISION OF HIGHWAYS DISTRICT 6	
EXAMINED	December 12, 20 25 <i>Leon C. Brui</i> ENGINEER OF OPERATIONS
EXAMINED	December 12, 20 25 <i>Leon C. Brui</i> ENGINEER OF PROJECT IMPLEMENTATION
EXAMINED	December 12, 20 25 <i>M. Hamby</i> ENGINEER OF PROGRAM DEVELOPMENT

Only the District 6 engineer assigned to the project, the RE or RT, will move the signals to manual flash condition and return the signals to "normal" operation. This shall not be delegated. In doing so, the RE or RT will have full responsibility for function of those signals and any issue that may arise from his/her actions.

The RE or RT shall notify by email:

bryan.fry@illinois.gov, dale.herbenstreit@illinois.gov, or Michael at least the day prior to the planned traffic signal flash condition.

The contractor shall not have access to the signal cabinet.

If you have any questions or require additional information, please call Michael Hamby at 217-556-4643.

REV - MS

FILE NAME :	USER NAME = Timothy.Sharp	DESIGNED -	REVISED -	STATE OF ILLINOIS DEPARTMENT OF TRANSPORTATION	INDEX OF SHEETS, STANDARDS GENERAL NOTES, SIGNATURES	F.A. RTE.	SECTION	COUNTY	TOTAL SHEETS	SHEET NO.	
pwt//idot-pw.bentley.com/PVIDOT/Documenta/IDOT Offices/District 6/ORD Projects/7254/Drawings/CADsheets/72546-shs;2-gennote.c	DRAWN	REVISED -	SCALE			72	184-9-3,84-10X-2	SANGAMON	6	2	
Default	PLOT SCALE = #SCALE#	CHECKED -	REVISED -			CONTRACT NO. 72546		ILLINOIS FED. AID PROJECT			
	PLOT DATE = 12/9/2025	DATE -	REVISED -			SCALE	SHEET	OF	SHEETS	STA.	TO



BEGIN PROJECT



FILE NAME :	USER NAME : Timothy.Sharp	DESIGNED -	REVISED -	STATE OF ILLINOIS DEPARTMENT OF TRANSPORTATION	LOCATION MAP				F.A.J. RTE.	SECTION	COUNTY	TOTAL SHEETS	SHEET NO.
pw://idot-pw.bentley.com/PWIDOT/Documents/IDOT Offices/District 6/ORD Projects/72546/Drawings/CAD sheets/72546-sh-4-5-location		DRAWN -	REVISED -		72	184-9-3,84-101-2	SANGAMON	6	4				
Default		CHECKED -	REVISED -						CONTRACT NO. 72546				
	PLOT DATE : 12/9/2025	DATE -	REVISED -		SCALE:	SHEET	OF	SHEETS	STA.	TO	STA.	ILLINOIS FED. AID PROJECT	



END PROJECT



FILE NAME :	USER NAME : Timothy.Sharp	DESIGNED -	REVISED -	STATE OF ILLINOIS DEPARTMENT OF TRANSPORTATION	LOCATION MAP				F.A.J. RTE.	SECTION	COUNTY	TOTAL SHEETS	SHEET NO.
pw://idot-pw.bentley.com/PWIDOT/Documents/IDOT Offices/District 6/ORD Projects/72546/Drawings/CADsheets/72546-sh-4-5-location		DRAWN -	REVISED -		72	184-9-3,84-10X-2	SANGAMON	6	5				
Default	PLOT SCALE : *SCALE*	CHECKED -	REVISED -						CONTRACT NO. 72546				
	PLOT DATE : 12/9/2025	DATE -	REVISED -		SCALE:	SHEET	OF	SHEETS	STA.	TO	STA.	ILLINOIS FED. AID PROJECT	

CURED-IN-PLACE PIPE LINER							
Location Number	MM	Lane/Location	Location Description	COUNTY	Pipe Type	36" PIPE LIN. FT.	42" PIPE LIN. FT.
1 & 2	93.8	WB	084-0136 & 0137 VETERANS PKWY	SANGAMON	CMP	306	
3	106.1	EB	084-0151 OAKCREST RD.	SANGAMON	CMP	154	
4	106.1	WB	084-0151 OAKCREST RD.	SANGAMON	CMP	134	
5	108.0	EB	084-0154 EXIT 108	SANGAMON	CMP	146	
6	108.0	WB	084-0154 EXIT 108	SANGAMON	CMP	146	
7	111.1	EB	084-0155 DAWSON RD	SANGAMON	CMP	166	
8	111.1	WB	084-0155 DAWSON RD	SANGAMON	CMP	153	
9	119.2	WB	084-0160 KENT FARM RD.	SANGAMON	CMP		156
10	121.2	EB	084-0161 CANTRELL RD.	SANGAMON	CMP	156	
11	121.2	WB	084-0161 CANTRELL RD.	SANGAMON	CMP	150	
12	122.2	WB	084-0162 EXIT 122	SANGAMON	CMP	250	
TOTAL LIN. FT.:						1761	156