
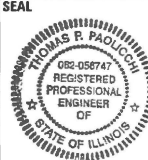




STATE OF ILLINOIS
DEPARTMENT OF TRANSPORTATION

F.A.P. RTE.	SECTION	COUNTY	TOTAL SHEETS	SHEET NO.
338	2024-1014-CR	COOK	7	1
		ILLINOIS	CONTRACT NO. 62X53	

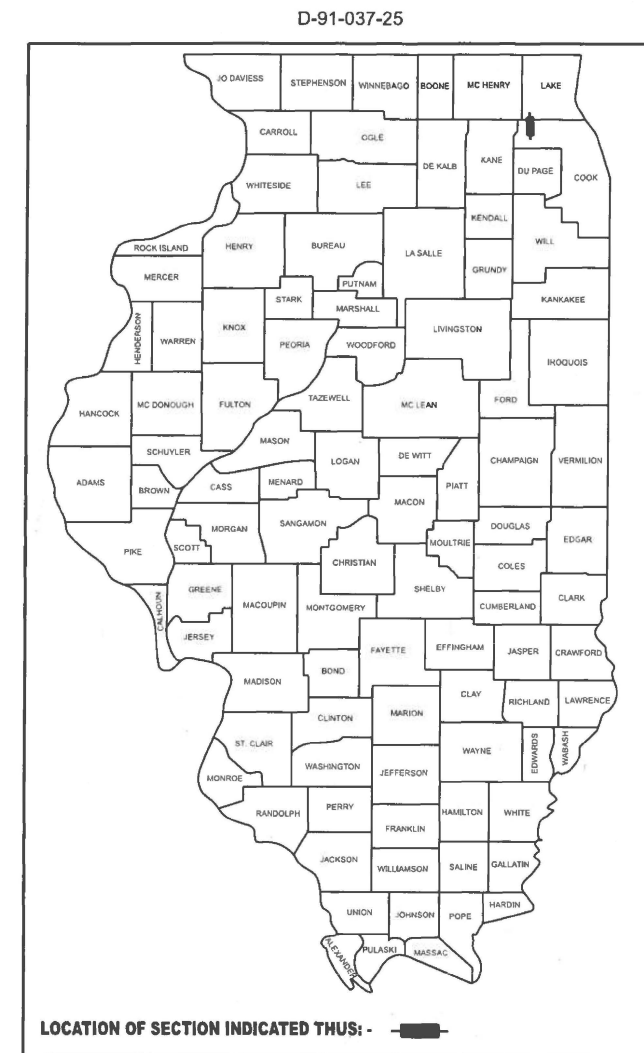
FOR INDEX OF SHEETS, SEE SHEET NO. 2

 Thomas P. Paolicchi, P.E. Lic. No. 062.056747 Expires: 11/30/2025 ABNA ENGINEERING (SHTS 1-3)	01/17/2025 Date	
 Stephen E. Alsbury, S.E. Lic. No. 081.5261 Expires: 11/30/2026 ABNA ENGINEERING (SHTS 4-5)	01/17/2025 Date	

PROPOSED HIGHWAY PLANS

FAP ROUTE 338 IL 59
OVER DITCH AT IL 68 (DUNDEE RD)
SECTION 2024-1014-CR
CULVERT REPAIR
COOK COUNTY

C-91-044-25



DUNDEE ROAD
FUNCTIONAL CLASSIFICATION
PRINCIPAL ARTERIAL
2023 ADT = 10,400
P.V.=94.8% S.U.=4.2% M.U.=1.0%
SPEED LIMIT : 55 MPH
MUNICIPALITY: VILLAGE OF
BARRINGTON HILLS

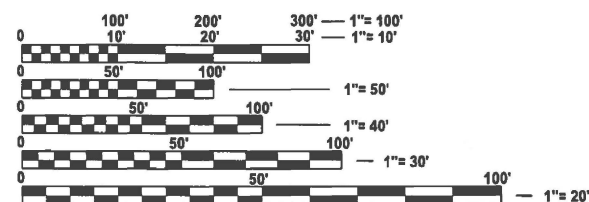
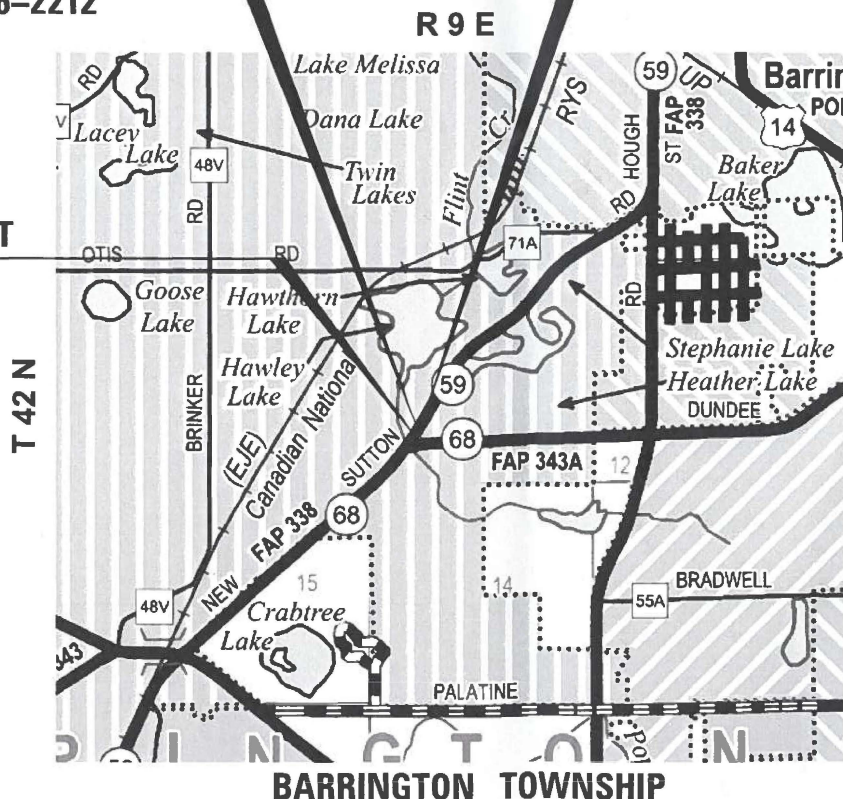
CULVERT REPAIR

STA 00 + 12
EXIST SN 016-2212

END IMPROVEMENT

STA 01 + 85

BEGIN IMPROVEMENT
STA 00 + 00



FULL SIZE PLANS HAVE BEEN PREPARED USING STANDARD ENGINEERING SCALES. REDUCED SIZED PLANS WILL NOT CONFORM TO STANDARD SCALES. IN MAKING MEASUREMENTS ON REDUCED PLANS, THE ABOVE SCALES MAY BE USED.

J.U.L.I.E.
JOINT UTILITY LOCATION INFORMATION FOR EXCAVATION
1-800-892-0123
OR 811

OR JULIEBeforeYouDig.com

PROJECT MANAGER: J. ALAIN MIDY, 847-221-3056
PROJECT ENGINEER: RODRIGO LEDEZMA, 847-705-4580

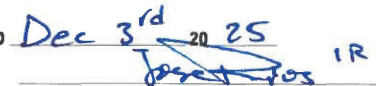
GROSS LENGTH = 185 FT. = 0.03 MILE
NET LENGTH = 185 FT. = 0.03 MILE



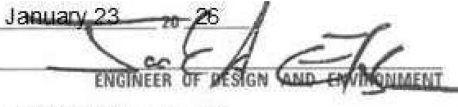
CONTRACT NO. 62X53

STATE OF ILLINOIS
DEPARTMENT OF TRANSPORTATION


SUBMITTED Dec 3rd 2025


REGIONAL ENGINEER

January 23, 2026


ENGINEER OF DESIGN AND ENVIRONMENT

January 23, 2026


DIRECTOR OF HIGHWAYS PROJECT IMPLEMENTATION

PRINTED BY THE AUTHORITY
OF THE STATE OF ILLINOIS

INDEX OF SHEETS

- 1 COVER SHEET
- 2 INDEX OF SHEETS, HIGHWAY STANDARDS & GENERAL NOTES
- 3 SUMMARY OF QUANTITIES
- 4 GENERAL PLAN & ELEVATION
- 5 GENERAL NOTES, BILL OF MATERIALS & REPAIR DETAILS
- 6 TRAFFIC CONTROL AND PROTECTION FOR SIDE ROADS, INTERSECTIONS AND DRIVEWAYS (TC-10)
- 7 ARTERIAL ROAD INFORMATION SIGN (TC-22)


HIGHWAY STANDARDS

- | | |
|-----------|---|
| 000001-09 | STANDARD SYMBOLS, ABBREVIATIONS AND PATTERNS |
| 001001-02 | AREAS OF REINFORCEMENT BARS |
| 701001-02 | OFF-RD OPERATIONS 2L 2W MORE THAN 15FT |
| 701006-05 | OFF-ROAD OPERATIONS, 2L, 2W, 15' (4.5 M) TO 24" (600 MM) FROM PAVEMENT EDGE |
| 701901-11 | TRAFFIC CONTROL DEVICES |

GENERAL NOTES

1. THE CONTRACTOR SHALL VERIFY ALL DIMENSIONS AND CONDITIONS IN THE FIELD PRIOR TO CONSTRUCTION AND ORDERING OF MATERIALS.
2. THE CONTRACTOR SHALL MAINTAIN ACCESS TO ABUTTING PROPERTY DURING CONSTRUCTION.
3. BEFORE BEGINNING ANY WORK THE CONTRACTOR SHALL RETAIN AND RECORD, FOR FUTURE REFERENCE, ALL EXISTING PAVEMENT MARKING LINES (AND RAISED REFLECTIVE PAVEMENT MARKERS) IN ORDER THAT THESE LOCATIONS CAN BE RE-ESTABLISHED FOR STRIPING. EXACT LOCATIONS OF ALL PAVEMENT MARKINGS SHALL BE AS SHOWN ON THE PLANS AND AS DIRECTED BY THE ENGINEER.
4. THE CONTRACTOR SHALL CONTACT KALPANA KANNAN-HOSADURGA, THE DISTRICT ONE TRAFFIC CONTROL SUPERVISOR AT KALPANA.KANNAN-HOSADURGA@ILLINOIS.GOV A MINIMUM OF 72 HOURS IN ADVANCE OF BEGINNING WORK.
5. THE CONTRACTOR WILL NOT BE ALLOWED TO SET UP A YARD OR FIELD OFFICE ON STATE PROPERTY WITHOUT WRITTEN PERMISSION FROM THE DEPARTMENT.
6. THE CONTRACTOR SHALL CONTACT "JULIE" ONLINE AT JULIEBEFOREYOU.DIG.COM OR CALL 1-800-892-0123 OR 811 TO HAVE THE LOCATION OF EXISTING UTILITIES STAKED AT LEAST 2 DAYS, BUT NO MORE THAN 10 DAYS (NOT INCLUDING WEEKENDS, HOLIDAYS, OR THE DAY OF THE NOTICE) PRIOR TO EXCAVATION.

MODEL: D:\62X53-Gen Notes-1 (Sheet)
 FILE NAME: J:\2024\6081\WB\62X53\CADD_Data\Sheets\62X53\62X53-Gen Notes.dgn

 ABNA DESIGN FIRM REG. 184.002117	USER NAME = gaisailani	DESIGNED - TPP	REVISED -
		DRAWN - GA	REVISED -
	PLOT SCALE = \$SCALE\$	CHECKED - CT	REVISED -
	PLOT DATE = 11/6/2024	DATE - 11/30/2024	REVISED -

STATE OF ILLINOIS
DEPARTMENT OF TRANSPORTATION

IL ROUTE 59 AND IL ROUTE 68 (DUNDEE ROAD)
INDEX OF SHEETS, HIGHWAY STANDARDS & GENERAL NOTES

SCALE: NONE SHEET 1 OF 1 SHEETS STA. TO STA.

F.A.P. RTE.	SECTION	COUNTY	TOTAL SHEETS	SHEET NO.
338	2024-1014-CR	COOK	7	2
CONTRACT NO. 62X53				
		ILLINOIS	FED. AID PROJECT	

CODE NO.	ITEM	UNIT	TOTAL QUANTITY	CONSTR. CODE
				100% STATE
				BOX CULVERT
				0004
				016-2212
59000200	EPOXY CRACK INJECTION	FOOT	34	34
67100100	MOBILIZATION	L SUM	1	1
* X5021507	DEWATERING	L SUM	1	1
* X5030218	ULTRA-HIGH PERFORMANCE REPAIR OF CONCRETE	SQ FT	537	537
* X7200061	TEMPORARY INFORMATION SIGNING	SQ FT	115.3	115.3

* INDICATES SPECIALTY ITEM

MODEL: D:\62X53_S00 [Sheet]
FILE NAME: J:\2024\6181\1\3\162X53\CADD Data\Sheets\62X53-S00.dgn



USER NAME = galsaitani	DESIGNED - TPP	REVISED -
	DRAWN - GA	REVISED -
PLOT SCALE = \$\$CALES	CHECKED - CT	REVISED -
PLOT DATE = 12/20/2024	DATE - 11/30/2024	REVISED -

STATE OF ILLINOIS
DEPARTMENT OF TRANSPORTATION

IL ROUTE 59 AND IL ROUTE 68 (DUNDEE ROAD)
SUMMARY OF QUANTITIES

SCALE: NONE SHEET 1 OF 1 SHEETS STA. TO STA.

F.A.P RTE.	SECTION	COUNTY	TOTAL SHEETS	SHEET NO.
338	2024-1014-CR	COOK	7	3
ILLINOIS FED. AID PROJECT			CONTRACT NO. 62X53	

Existing Structure: 7' x 7' Reinforced concrete box, Use in place.

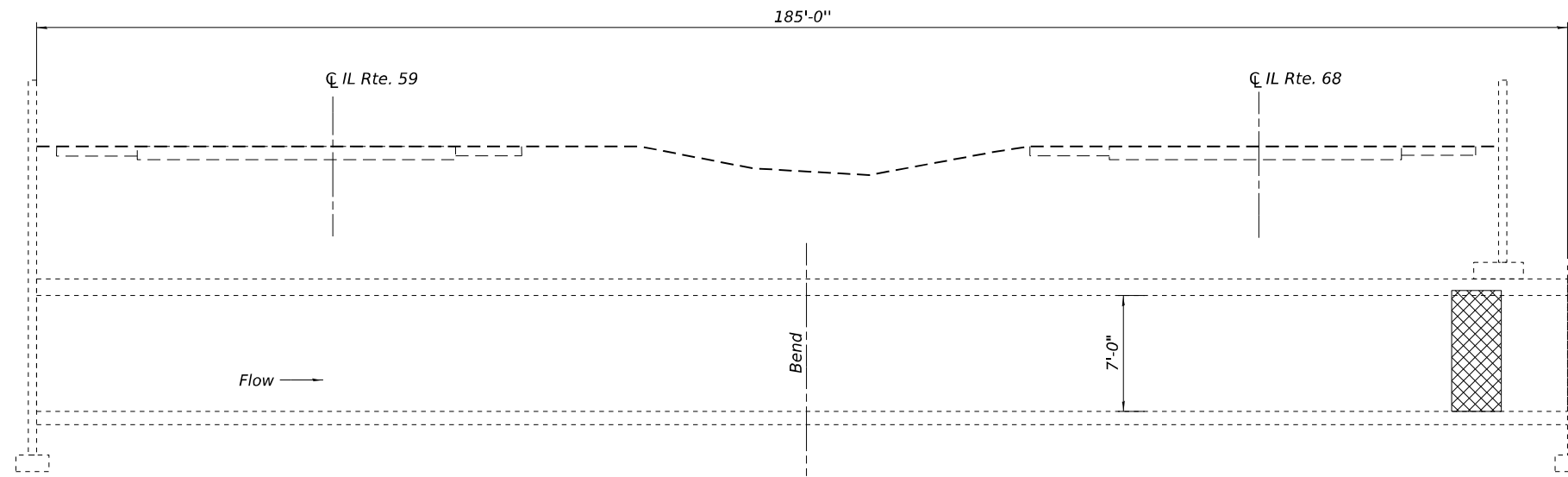
Traffic Control: Roadway to remain open shoulder closures.

Salvage: None



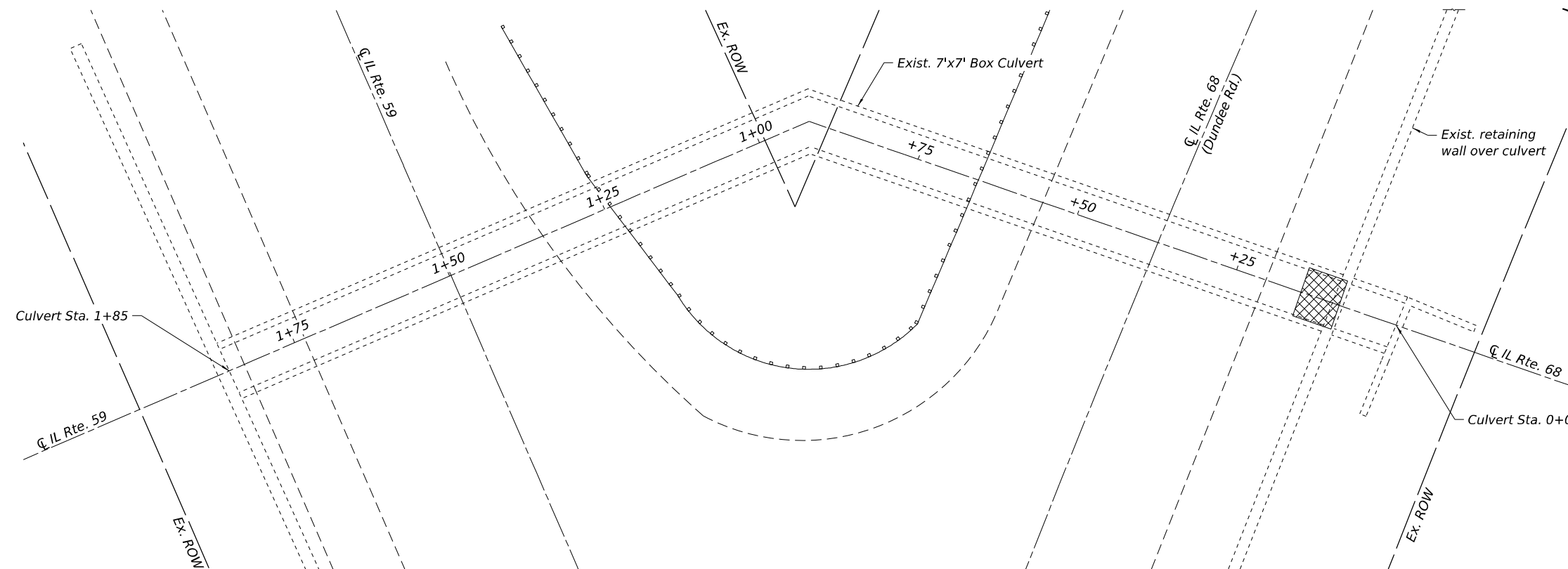
Signed: *[Signature]*
 Stephen E. Alsbury, S.E. IL Lic. No. 081-5261
 Expires: 11/30/2026

Date: 1/17/2025



ELEVATION

See sheet 2 of 2 for schedule of repairs and locations



PLAN

DESIGN STRESSES

(New Work)

$f_c = 14,000$ psi (UHPC)
 $f_y = 60,000$ psi (Reinforcement)

(Existing)

$f_c = 3,500$ psi (Superstructure)
 $f_y = 60,000$ psi (Reinforcement)

SCOPE OF WORK

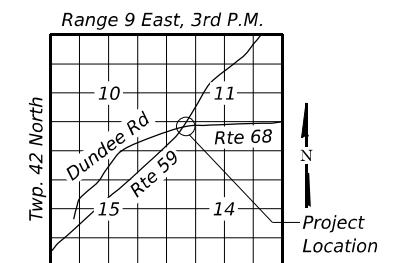
- 1) Dewater
- 2) Ultra High Performance Repair of Concrete
- 3) Epoxy Crack Injection

INDEX OF SHEETS

- 1) General Plan and Elevation
- 2) General Notes, Bill of Materials & Repair Details.

LEGEND

Ultra High Performance Repair of Concrete (UHPC)



LOCATION SKETCH

GENERAL PLAN & ELEVATION

7 x 7 BOX CULVERT REPAIR

ILLINOIS ROUTE 68

COOK COUNTY

MODEL: PLAN (Sheet)
 FILE NAME: J:\2024\60811W\3\1\62X53\CADD Data\Bridges\162X53-001-GPE.dgn



USER NAME = mjones	DESIGNED - TPP	REVISED -
	DRAWN - GA	REVISED -
PLOT SCALE = \$SSCALE\$	CHECKED - CT	REVISED -
PLOT DATE = 1/20/2026	DATE - 11/30/2024	REVISED -

**STATE OF ILLINOIS
 DEPARTMENT OF TRANSPORTATION**

Scale: NTS SHEET 1 OF 2 SHEETS STA. TO STA.

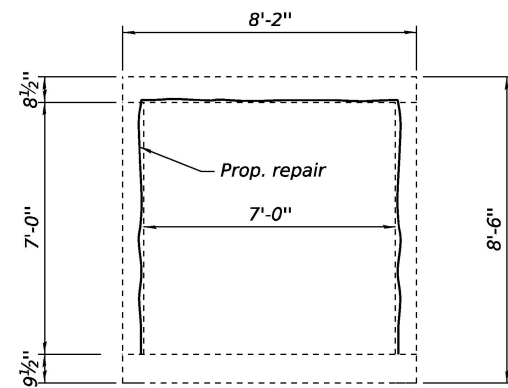
F.A.P. RTE.	SECTION	COUNTY	TOTAL SHEETS	SHEET NO.
333B	2024-1014-CR	COOK	7	4
CONTRACT NO. 62X53			ILLINOIS FED. AID PROJECT	

GENERAL NOTES

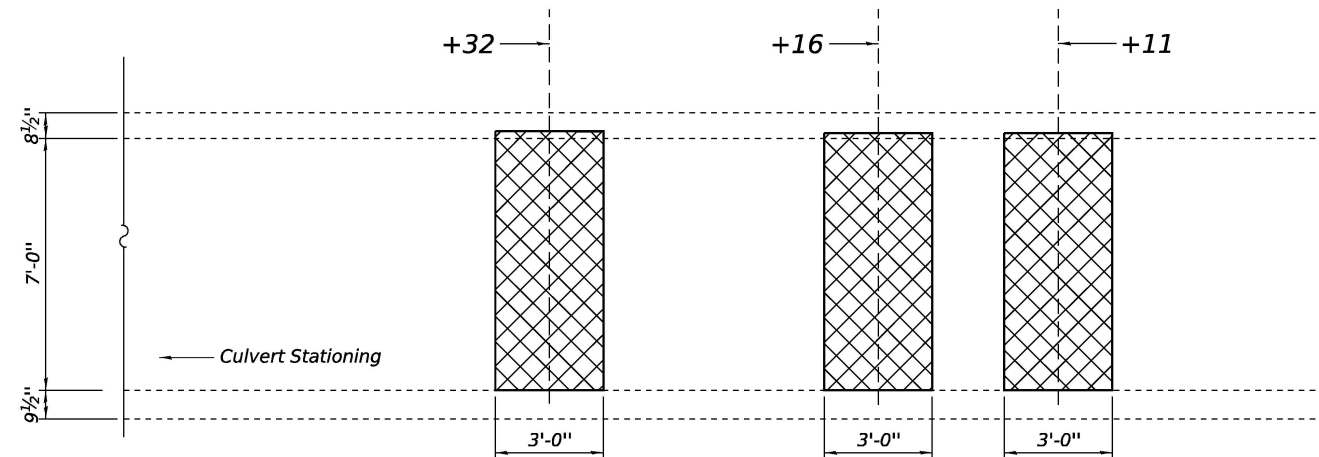
Plan dimensions and details relative to the existing structure have been taken from existing plans and are subject to nominal construction variations. The Contractor shall field verify existing dimensions and details affecting new construction and make necessary approved adjustments prior to construction or ordering of materials. Such variations shall not be cause for additional compensation for a change in scope of the work, however, the Contractor will be paid for the quantity actually furnished at the unit price bid for the work.

TOTAL BILL OF MATERIAL

ITEM	UNIT	TOTAL
Dewater	L Sum	1.0
Ultra High Performance Repair of Concrete	Sq Ft	537
Epoxy Crack Injection	Feet	34



TYPICAL SECTION



SIDE WALL TYPICAL ELEVATION



Typical Condition - Culvert Sta. 00+11



Typical Condition - Culvert Sta. 00+16

EPOXY CRACK INJECTION

LOCATION	UNIT	TOTAL
Rt. Wall 1+57 to 1+70 (High)	Feet	17
Rt. Wall 1+57 to 1+70 (Low)	Feet	17
TOTAL		34

ULTRA HIGH PERFORMANCE REPAIR OF CONCRETE SCHEDULE (Sq./ Ft.)

LOCATION	LEFT WALL		RIGHT WALL		TOP	
	<5"	>5"	<5"	>5"	<5"	>5"
0+11	14	7	14	7	14	7
0+16	14	7	14	7	14	7
0+32	14	7	14	7	14	7
0+41	14	7	14	7	14	7
0+69	14	7	14	7	14	7
0+85	7	3.5	7	3.5	7	3.5
0+98	7	3.5	7	3.5	7	3.5
1+23	28	7	28	7	28	7
1+36	14	4	14	4	14	4
TOTALS	126	53	126	53	126	53

Depths provided for information only

LEGEND

Ultra High Performance Repair of Concrete (UHPC)

MODEL: I:\united (Sheet) FILE NAME: J:\2024\6081\1\3\1\62X53\CADD Data\Bridges\162X53-002-REPAIR-DETAILS.dgn



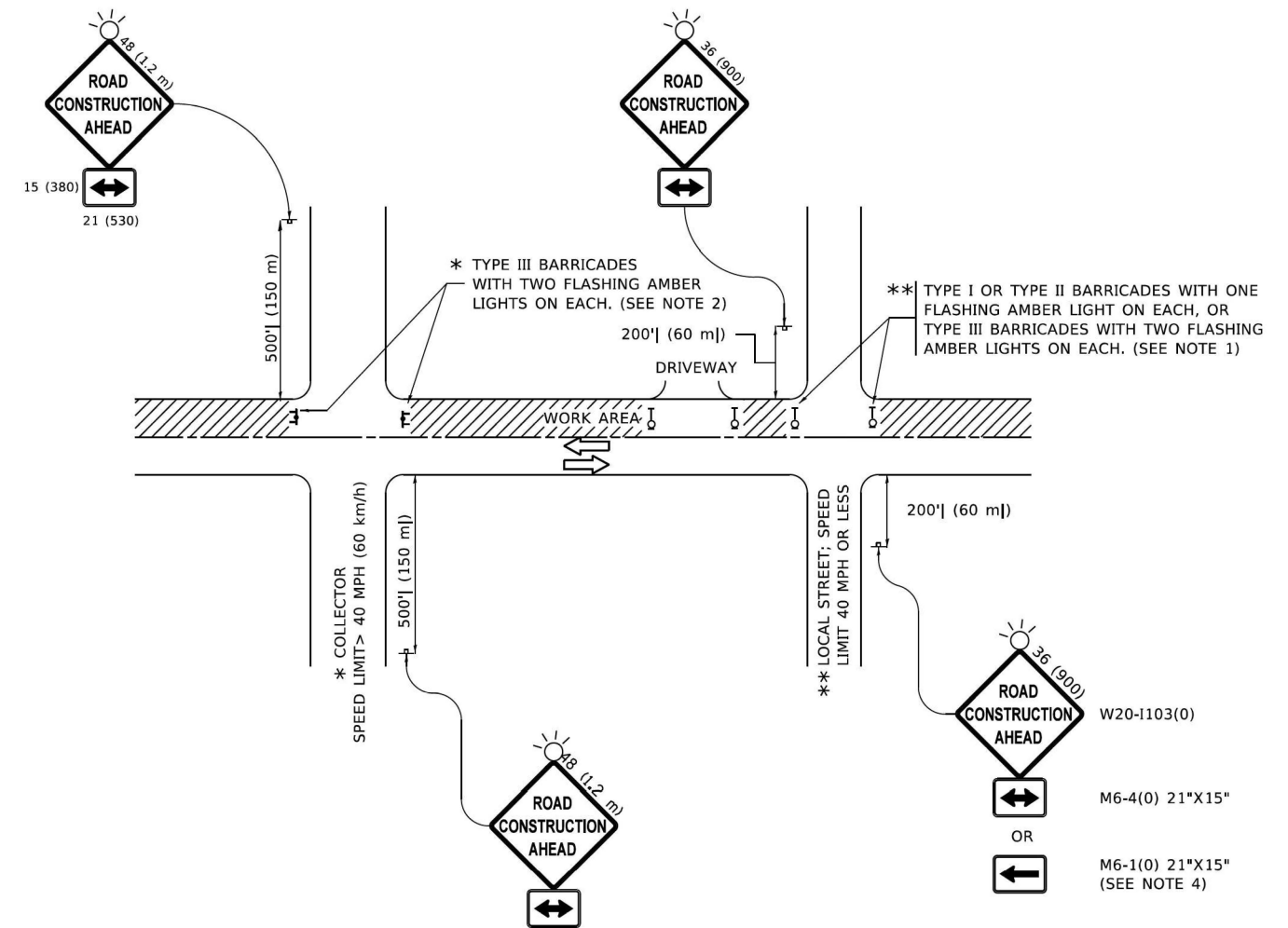
USER NAME = mjones	DESIGNED - TPP	REVISED -
PLOT SCALE = \$\$\$CALE\$	DRAWN - GA	REVISED -
PLOT DATE = 1/20/2026	CHECKED - CT	REVISED -
	DATE - 11/30/2024	REVISED -

STATE OF ILLINOIS DEPARTMENT OF TRANSPORTATION

GENERAL NOTES, BILL OF MATERIALS & REPAIR DETAILS BOX CULVERT REPAIR - ILLINOIS ROUTE 68

Scale: NTS SHEET 2 OF 2 SHEETS STA. TO STA.

F.A.P. RTE. 338B	SECTION 2024-1014-CR	COUNTY COOK	TOTAL SHEETS 7	SHEET NO. 5
ILLINOIS FED. AID PROJECT			CONTRACT NO. 62X53	



NOTES:

- SIDE ROAD WITH A SPEED LIMIT OF 40 MPH (60 km/h) OR LESS AS SHOWN ON THE DRAWING AND AS DIRECTED BY THE ENGINEER:
 - ONE "ROAD CONSTRUCTION AHEAD" SIGN 36 x 36 (900x900) WITH A FLASHER MOUNTED ON IT APPROXIMATELY 200' (60 m) IN ADVANCE OF THE MAIN ROUTE.
 - THE CLOSED PORTION OF THE MAIN ROUTE SHALL BE PROTECTED BY BLOCKING WITH TYPE I, TYPE II OR TYPE III BARRICADES, 1/3 OF THE CROSS SECTION OF THE CLOSED PORTION.
- SIDE ROAD WITH A SPEED LIMIT GREATER THAN 40 MPH (60 km/h) AS SHOWN ON THE DRAWING AND AS DIRECTED BY THE ENGINEER:
 - ONE "ROAD CONSTRUCTION AHEAD" SIGN 48 x 48 (1.2 m x 1.2 m) WITH A FLASHER MOUNTED ON IT APPROXIMATELY 500' (150 m) IN ADVANCE OF THE MAIN ROUTE.
 - THE CLOSED PORTION OF THE MAIN ROUTE SHALL BE PROTECTED BY BLOCKING WITH TYPE III BARRICADES, 1/2 OF THE CROSS SECTION OF THE CLOSED PORTION.
- CONES MAY BE SUBSTITUTED FOR BARRICADES OR DRUMS AT HALF THE SPACING DURING DAY OPERATIONS. CONES SHALL BE A MINIMUM OF 28 (710) IN HEIGHT.
- SIGNING AND THE WORK ZONE, A SINGLE HEADED ARROW (M6-1) SHALL BE USED IN LIEU OF THE DOUBLE HEADED ARROW (M6-4).
- WHEN WORK IS BEING PERFORMED ON A SIDE ROAD OR DRIVEWAY, FOLLOW THE APPLICABLE STANDARD(S). THE DIRECTIONAL ARROW (M6-1 OR M6-4) SHALL BE COVERED OR REMOVED WHEN NO LONGER CONSISTENT WITH THE TRAFFIC CONTROL SET-UP.
- ADVANCE WARNING SIGNS ARE TO BE OMITTED ON DRIVEWAYS UNLESS OTHERWISE SPECIFIED IN THE PLANS OR BY THE ENGINEER.
- THE TRAFFIC CONTROL AND PROTECTION FOR SIDE ROADS, INTERSECTIONS, AND DRIVEWAYS SHALL BE INCLUDED IN THE COST OF SPECIFIED TRAFFIC CONTROL STANDARDS OR ITEMS.

All dimensions are in inches (millimeters) unless otherwise shown.

MODEL: TC-26 (Sheet)
FILE NAME: J:\2023\6011\Cadd\196-019\WO14\CADD Data\Sheets\1 STANDARDSDS.dgn



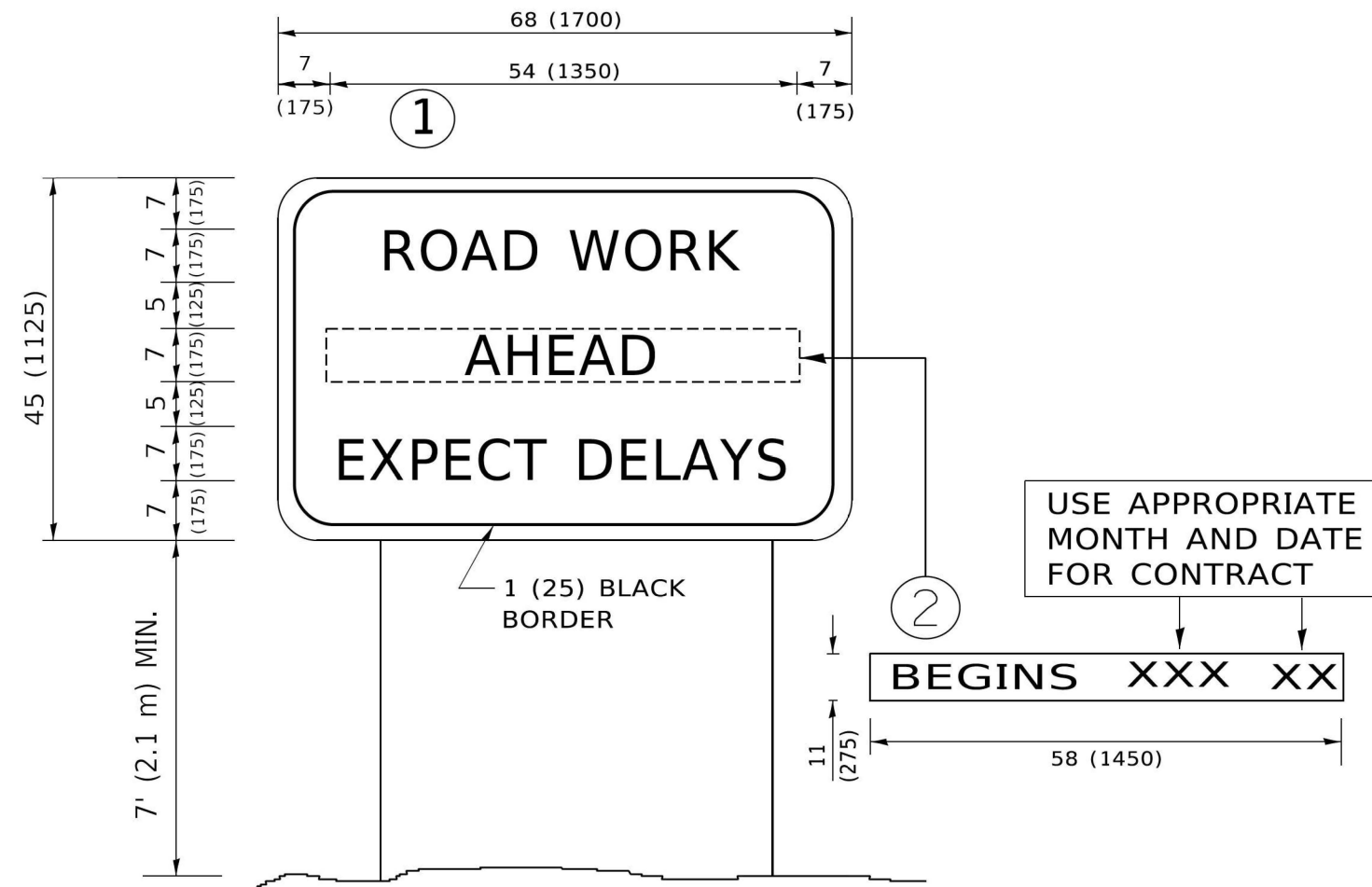
USER NAME = galsallani	DESIGNED - TPP	REVISED -
	DRAWN - GA	REVISED -
PLOT SCALE = \$\$SCALE\$	CHECKED - CT	REVISED -
PLOT DATE = 5/6/2025	DATE - 11/30/2024	REVISED -

STATE OF ILLINOIS
DEPARTMENT OF TRANSPORTATION

IL ROUTE 59 AND IL ROUTE 68 (DUNDEE ROAD)
DISTRICT 1 STANDARDS (TC-10)

SCALE: NONE SHEET 1 OF 2 SHEETS STA. TO STA.

F.A.P. RTE.	SECTION	COUNTY	TOTAL SHEETS	SHEET NO.
338	2024-1014-CR	COOK	7	6
CONTRACT NO. 62X53				
ILLINOIS FED. AID PROJECT				



NOTES:

1. USE BLACK LETTERING ON ORANGE BACKGROUND.
2. ERECT SIGNS IN ADVANCE OF THE LOCATION FOR THE "ROAD CONSTRUCTION AHEAD" SIGN AT LOCATIONS AS DIRECTED BY THE ENGINEER.
3. ERECT SIGN ① WITH INSTALLED PANEL ② ONE WEEK PRIOR TO THE START OF CONSTRUCTION.
4. REMOVE PANEL ② SOON AFTER THE START OF CONSTRUCTION.
5. SEE SPECIAL PROVISION FOR "TEMPORARY INFORMATION SIGNING" FOR ADDITIONAL INFORMATION.
6. ONE SIGN ASSEMBLY EQUALS 25.70 SQ. FT. (2.3 SQ. M.)
7. SHALL BE PAID FOR AS TEMPORARY INFORMATION SIGNING.

ALL DIMENSIONS ARE IN INCHES (MILLIMETERS) UNLESS OTHERWISE SHOWN.

MODEL: TC-22 (Sheet) FILE NAME: J:\2023\6011\Cadd\196-019\WO14\CADD Data\Sheets\D1 STANDARDS.dgn



USER NAME = galsallani	DESIGNED - TPP	REVISED -
	DRAWN - GA	REVISED -
PLOT SCALE = \$\$SCALE\$	CHECKED - CT	REVISED -
PLOT DATE = 12/18/2024	DATE - 11/30/2024	REVISED -

**STATE OF ILLINOIS
DEPARTMENT OF TRANSPORTATION**

**IL ROUTE 59 AND IL ROUTE 68 (DUNDEE ROAD)
DISTRICT 1 STANDARDS (TC-22)**

SCALE: NONE SHEET 2 OF 2 SHEETS STA. TO STA.

F.A.P. RTE.	SECTION	COUNTY	TOTAL SHEETS	SHEET NO.
338	2024-1014-CR	COOK	7	7
CONTRACT NO. 62X53				
ILLINOIS FED. AID PROJECT				