

STATE OF ILLINOIS
DEPARTMENT OF TRANSPORTATION
DIVISION OF HIGHWAYS
**PROPOSED
HIGHWAY PLANS**

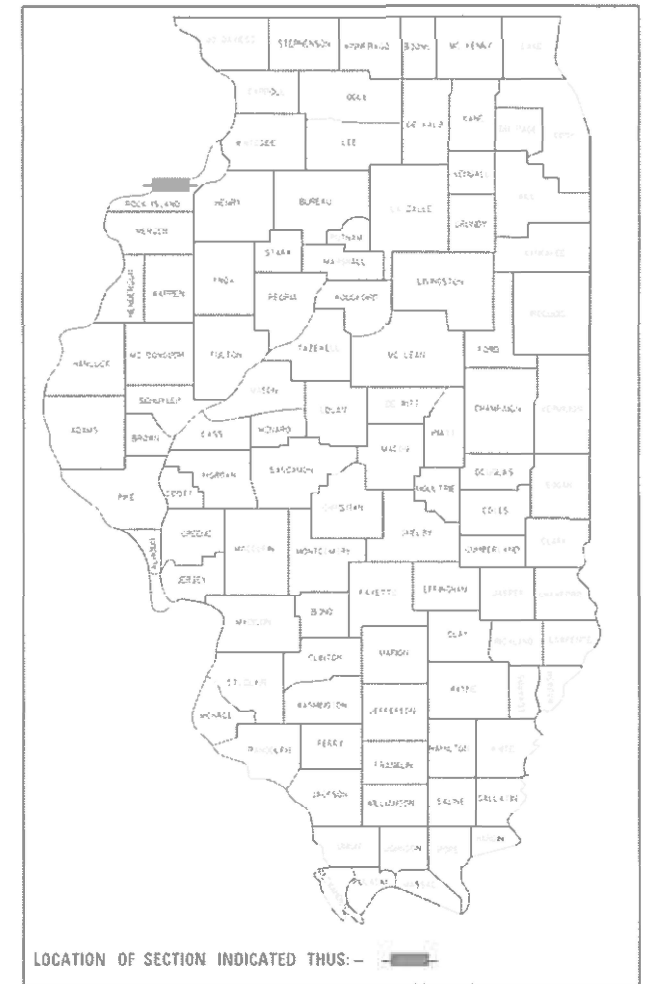
SECTION	COUNTY	TOTAL SHEETS	SHEET NO.
D2 BP 2026-01	ROCK ISLAND	8	1
ILLINOIS		CONTRACT NO. 64U96	

D-92-110-26

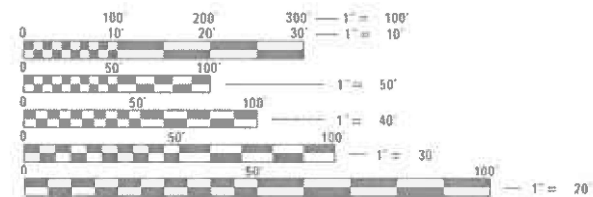
FOR INDEX OF SHEETS, SEE SHEET NO. 2
FOR STATE STANDARDS, SEE SHEET NO. 2

F.A.I. ROUTE 88 (I-88)
SECTION: D2 BP 2026-01
PROJECT: NHPP-KMZ6(833)
TYPE OF IMPROVEMENT: BRIDGE PAINTING
ROCK ISLAND COUNTY

C-92-004-26



SN 081-0122
SN 081-0123



FULL SIZE PLANS HAVE BEEN PREPARED USING STANDARD ENGINEERING SCALES. REDUCED SIZED PLANS WILL NOT CONFORM TO STANDARD SCALES. IN MAKING MEASUREMENTS ON REDUCED PLANS, THE ABOVE SCALES MAY BE USED.

J.U.L.I.E.
JOINT UTILITY LOCATION INFORMATION FOR EXCAVATION
1-800-892-0123
OR 811

PROJECT ENGINEER: DAVID DOSS (815) 284-5416
PROJECT MANAGER: DERRICK LOPEZ (815) 284-5398

CONTRACT NO. 64U96



SN 081-0128
SN 081-0129

STATE OF ILLINOIS
DEPARTMENT OF TRANSPORTATION
DIVISION OF HIGHWAYS

SUBMITTED Nov 24 2025
Juha Manninen
DEPUTY DIRECTOR OF HIGHWAYS, REGION ENGINEER
January 23 2026
Scott A. Etkin
ENGINEER OF DESIGN AND ENVIRONMENT
January 23 2026
Gregory S. [Signature]
DIRECTOR OF HIGHWAYS PROJECT IMPLEMENTATION

PRINTED BY THE AUTHORITY
OF THE STATE OF ILLINOIS

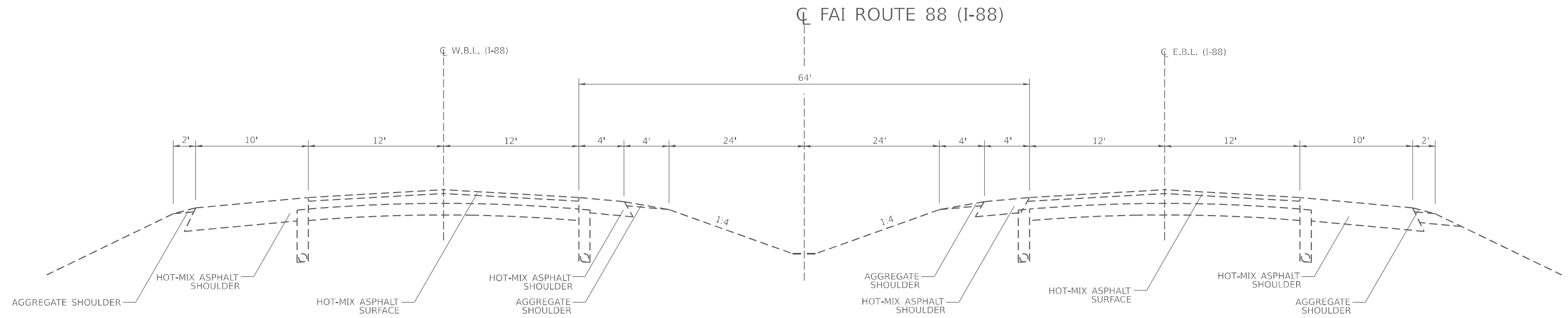
SUMMARY OF QUANTITIES

CODE NUMBER	ITEM	UNIT	0047 90% NHPP 10% STATE	
			ROCK ISLAND COUNTY	TOTAL QUANTITY
Z0010501	CLEANING AND PAINTING STEEL BRIDGE NO, 1	L SUM	1	1
Z0010502	CLEANING AND PAINTING STEEL BRIDGE NO, 2	L SUM	1	1
Z0010503	CLEANING AND PAINTING STEEL BRIDGE NO, 3	L SUM	1	1
Z0010504	CLEANING AND PAINTING STEEL BRIDGE NO, 4	L SUM	1	1
67100100	MOBILIZATION	L SUM	1	1
70100800	TRAFFIC CONTROL AND PROTECTION, STANDARD 701401	L SUM	1	1
70400100	TEMPORARY CONCRETE BARRIER	FOOT	775	775
70400200	RELOCATE TEMPORARY CONCRETE BARRIER	FOOT	775	775
70600250	IMPACT ATTENUATORS, TEMPORARY (NON-REDIRECTIVE), TEST LEVEL 3	EACH	2	2
70600350	IMPACT ATTENUATORS, RELOCATE (NON-REDIRECTIVE), TEST LEVEL 3	EACH	2	2
X5067501	BRIDGE CLEANING AND PAINTING WARRANTY NUMBER 1	L SUM	1	1
X5067502	BRIDGE CLEANING AND PAINTING WARRANTY NUMBER 2	L SUM	1	1
X5067503	BRIDGE CLEANING AND PAINTING WARRANTY NUMBER 3	L SUM	1	1
X5067504	BRIDGE CLEANING AND PAINTING WARRANTY NUMBER 4	L SUM	1	1

MODEL: D:\b\bill\work\benitez.com\PNWID07\Documents\DOT_0_csr\District_2\08RD_projects\Operations\Bridges_Section\District_2_Courtesy\Rock_Island\081-0122_6_081-0122\16196\CADD\64U96-ht-cover.dgn
 FILE: M:\arc\bill\work\benitez.com\PNWID07\Documents\DOT_0_csr\District_2\08RD_projects\Operations\Bridges_Section\District_2_Courtesy\Rock_Island\081-0122_6_081-0122\16196\CADD\64U96-ht-cover.dgn

USER NAME = David.Doss	DESIGNED -	REVISED -	STATE OF ILLINOIS DEPARTMENT OF TRANSPORTATION	SUMMARY OF QUANTITIES			F.A.I. RTE.	SECTION	COUNTY	TOTAL SHEETS	SHEET NO.	
PLOT SCALE = \$SCALE\$	DRAWN -	REVISED -					88	D2 BP 2026-01	ROCK ISLAND	8	3	
PLOT DATE = 11/18/2025	CHECKED -	REVISED -		SCALE:	SHEET	OF	SHEETS	STA.	TO	STA.	CONTRACT NO. 64U96	
	DATE -	REVISED -		ILLINOIS FED. AID PROJECT								

EXISTING TYPICAL



MODEL: Default
 FILE: \\na11c-pw\lib\caw-bea\paw.com\PIV\DOT\Documents\DOT 0_csr\District 2\ORBD Project\Operations\Bridg Section\District 2_Counties\Rock_Island\081-0132_6_081-0132\4096\CADD\64U96-518-101-cover.dgn

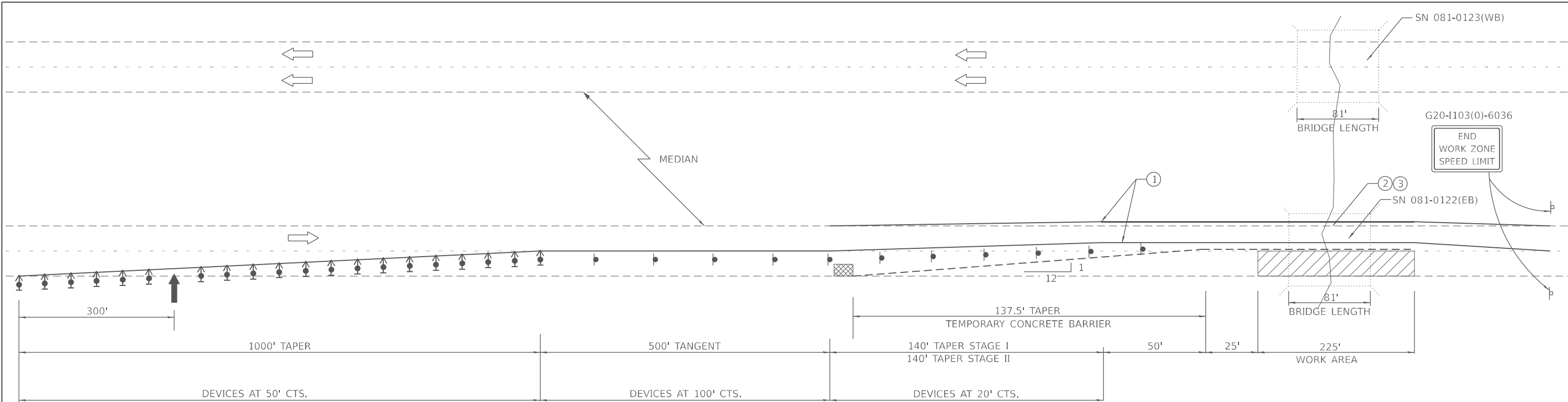
USER NAME = David.Doss	DESIGNED -	REVISED -
	DRAWN -	REVISED -
PLOT SCALE = \$SCALE\$	CHECKED -	REVISED -
PLOT DATE = 11/18/2025	DATE -	REVISED -

STATE OF ILLINOIS
DEPARTMENT OF TRANSPORTATION

EXISTING TYPICAL

SCALE: SHEET OF SHEETS STA. TO STA.

F.A.I. RTE.	SECTION	COUNTY	TOTAL SHEETS	SHEET NO.
88	D2 BP 2026-01	ROCK ISLAND	8	5
CONTRACT NO. 64U96				
ILLINOIS FED. AID PROJECT				



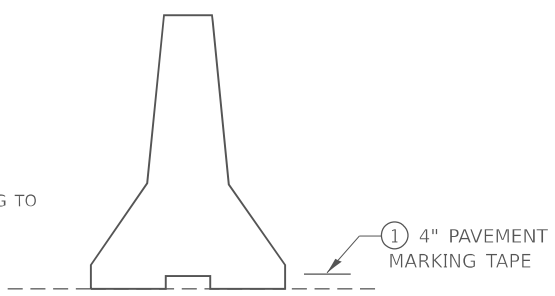
SEE STANDARD 701400 (SPECIAL) FOR APPROACH START OF LANE CLOSURE TAPER

PAVEMENT MARKINGS

ALL TEMPORARY PAVEMENT MARKING SHALL BE, PAVEMENT MARKING TAPE, TYPE IV, 4" AND THE MATERIALS SHALL BE ACCORDING TO ARTICLE 1095.06 OF THE STANDARD AND SPECIFICATIONS. THE CONTRACTOR SHALL INSTALL, MAINTAIN AND REMOVE ALL TEMPORARY PAVEMENT MARKING TAPE. THIS WORK SHALL NOT BE PAID SEPERATELY AND SHALL BE INCLUDED IN THE COST OF THE "TRAFFIC CONTROL AND PROTECTION STANDARD 701402 (SPECIAL)".

ALL CONFLICTING PAVEMENT MARKINGS AND RAISED REFLECTIVE PAVEMENT MARKERS SHALL BE PROTECTED PRIOR TO COVERING WITH PAVEMENT MARKING BLACKOUT TAPE, 4". PAVEMENT MARKING BLACKOUT TAPE, 4", SHALL EXTEND A MINIMUM OF 2 INCHES BEYOND THE EXISTING MARKINGS OR REFLECTORS IN ALL DIRECTIONS. THIS WORK SHALL INCLUDE PROTECTING EXISTING PAVEMENT MARKINGS AND RAISED REFLECTIVE PAVEMENT MARKERS, INSTALLING, MAINTAINING AND REMOVING BLACKOUT TAPE. THIS WORK SHALL NOT BE PAID SEPERATELY AND SHALL BE INCLUDED IN THE COST OF THE "TRAFFIC CONTROL AND PROTECTION STANDARD 701402 (SPECIAL)".

*NO EQUIPMENT OR MATERIALS SHALL ENCROACH WITHIN A DISTANCE OF 2'-0" AS MEASURED FROM THE BASE OF THE TEMPORARY CONCRETE BARRIER TO THE CL OF ROADWAY



ANCHORED ACCORDING TO ARTICLE 704.04

TEMPORARY CONCRETE BARRIER

SYMBOLS

- ARROW BOARD
- WORK AREA
- SIGN
- DIRECTION INDICATOR BARRICADE WITH STEADY BURN MONODIRECTIONAL LIGHT
- TRAFFIC CONTROL DRUM WITH STEADY BURN MONODIRECTIONAL LIGHT
- TEMPORARY CONCRETE BARRIER
- IMPACT ATTENUATOR, TEMPORARY (NON-REDIRECTIVE), TEST LEVEL 3

- ① TEMPORARY PAVEMENT MARKING TAPE SHALL BE PLACED THROUGHOUT THE TAPER AND ALONG-SIDE THE WORK AREA. THE RIGHT EDGE LINE SHALL BE WHITE AND THE LEFT EDGE LINE SHALL BE YELLOW.
- ② EXISTING PAVEMENT MARKING LINE
- ③ BLACKOUT TAPE TO COVER CONFLICTING EXISTING PAVEMENT MARKING LINES

GENERAL NOTES

THIS STANDARD IS USED WHERE AT ANY TIME ANY VEHICLE, EQUIPMENT, WORKERS OR THEIR ACTIVITIES WILL ENCROACH ON THE PAVEMENT OR ON THE SHOULDER WITHIN 24 (600) OF THE EDGE OF PAVEMENT FOR DAYLIGHT OPERATION EXCEEDING ONE DAY AND WHERE TEMPORARY CONCRETE BARRIER IS UTILIZED.

THIS STANDARD MUST ALWAYS BE USED IN COMBINATION WITH STANDARD 701400.

TEMPORARY CONCRETE BARRIER SHALL BE ACCORDING TO STANDARD 704001.

MODEL: Default
FILE: \\na11c1-pw\filestore\paw\bea\paw.com\paw\dot\Documents\DOT_0_ces\District_2\ORBD_projects\Operations\Bridges_Section\District_2_Counties\Rock_Island\081-0122 & 081-0123\64U96\CADD\64U96\64U96-sht-cover.dgn

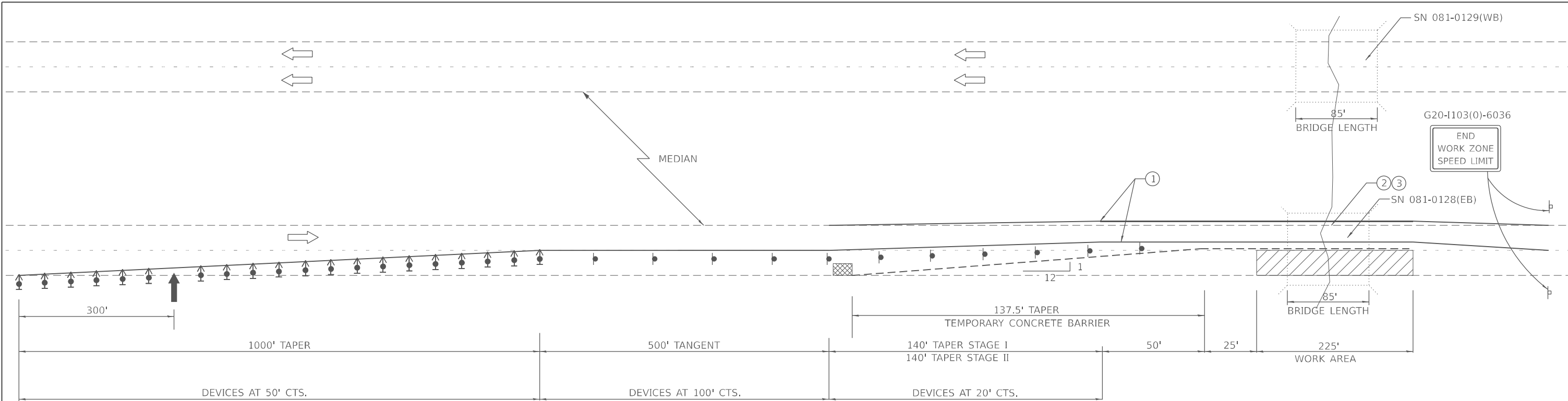
USER NAME = David.Doss	DESIGNED -	REVISED -
	DRAWN -	REVISED -
PLOT SCALE = \$SCALE\$	CHECKED -	REVISED -
PLOT DATE = 11/18/2025	DATE -	REVISED -

**STATE OF ILLINOIS
DEPARTMENT OF TRANSPORTATION**

**TRAFFIC CONTROL & PROTECTION, STANDARD 701402 (SPECIAL)
FOR SN's 081-0122 & 081-0123 (I-88 OVER ZUMA CREEK)**

F.A.I. RTE.	SECTION	COUNTY	TOTAL SHEETS	SHEET NO.
88	D2 BP 2026-01	ROCK ISLAND	8	7
ILLINOIS FED. AID PROJECT			CONTRACT NO. 64U96	

SCALE: SHEET OF SHEETS STA. TO STA.



SEE STANDARD 701400 (SPECIAL) FOR APPROACH START OF LANE CLOSURE TAPER

PAVEMENT MARKINGS

ALL TEMPORARY PAVEMENT MARKING SHALL BE, PAVEMENT MARKING TAPE, TYPE IV 4" AND THE MATERIALS SHALL BE ACCORDING TO ARTICLE 1095.06 OF THE STANDARD AND SPECIFICATIONS. THE CONTRACTOR SHALL INSTALL, MAINTAIN AND REMOVE ALL TEMPORARY PAVEMENT MARKING TAPE. THIS WORK SHALL NOT BE PAID SEPERATELY AND SHALL BE INCLUDED IN THE COST OF THE "TRAFFIC CONTROL AND PROTECTION STANDARD 701402 (SPECIAL)".

ALL CONFLICTING PAVEMENT MARKINGS AND RAISED REFLECTIVE PAVEMENT MARKERS SHALL BE PROTECTED PRIOR TO COVERING WITH PAVEMENT MARKING BLACKOUT TAPE, 4". PAVEMENT MARKING BLACKOUT TAPE, 4", SHALL EXTEND A MINIMUM OF 2 INCHES BEYOND THE EXISTING MARKINGS OR REFLECTORS IN ALL DIRECTIONS. THIS WORK SHALL INCLUDE PROTECTING EXISTING PAVEMENT MARKINGS AND RAISED REFLECTIVE PAVEMENT MARKERS, INSTALLING, MAINTAINING AND REMOVING BLACKOUT TAPE. THIS WORK SHALL NOT BE PAID SEPERATELY AND SHALL BE INCLUDED IN THE COST OF THE "TRAFFIC CONTROL AND PROTECTION STANDARD 701402 (SPECIAL)".

*NO EQUIPMENT OR MATERIALS SHALL ENCROACH WITHIN A DISTANCE OF 2'-0" AS MEASURED FROM THE BASE OF THE TEMPORARY CONCRETE BARRIER TO THE CL OF ROADWAY

SYMBOLS

- ARROW BOARD
- WORK AREA
- SIGN
- DIRECTION INDICATOR BARRICADE WITH STEADY BURN MONODIRECTIONAL LIGHT
- TRAFFIC CONTROL DRUM WITH STEADY BURN MONODIRECTIONAL LIGHT
- TEMPORARY CONCRETE BARRIER
- IMPACT ATTENUATOR, TEMPORARY (NON-REDIRECTIVE), TEST LEVEL 3

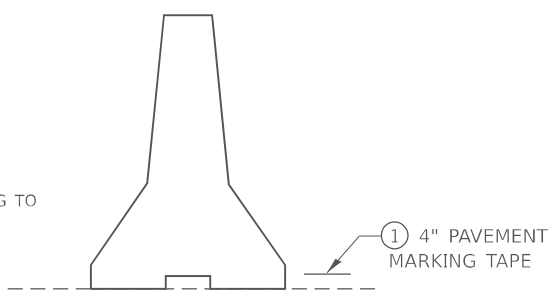
- ① TEMPORARY PAVEMENT MARKING TAPE SHALL BE PLACED THROUGHOUT THE TAPER AND ALONG-SIDE THE WORK AREA. THE RIGHT EDGE LINE SHALL BE WHITE AND THE LEFT EDGE LINE SHALL BE YELLOW.
- ② EXISTING PAVEMENT MARKING LINE
- ③ BLACKOUT TAPE TO COVER CONFLICTING EXISTING PAVEMENT MARKING LINES

GENERAL NOTES

THIS STANDARD IS USED WHERE AT ANY TIME ANY VEHICLE, EQUIPMENT, WORKERS OR THEIR ACTIVITIES WILL ENCROACH ON THE PAVEMENT OR ON THE SHOULDER WITHIN 24 (600) OF THE EDGE OF PAVEMENT FOR DAYLIGHT OPERATION EXCEEDING ONE DAY AND WHERE TEMPORARY CONCRETE BARRIER IS UTILIZED.

THIS STANDARD MUST ALWAYS BE USED IN COMBINATION WITH STANDARD 701400.

TEMPORARY CONCRETE BARRIER SHALL BE ACCORDING TO STANDARD 704001.



TEMPORARY CONCRETE BARRIER

MODEL: Default FILE: \\na16c-pw\filestore\pww\pww\documents\DOT_0_ces\District_2\ORRD_projects\Operations\Bridges_Section\District_2_Counties\Rock_Island\081-0128 & 081-0129\Bridges\CADD\64U96\64U96-sht-cover.dgn

USER NAME = David.Doss	DESIGNED -	REVISED -	STATE OF ILLINOIS DEPARTMENT OF TRANSPORTATION	TRAFFIC CONTROL & PROTECTION, STANDARD 701402 (SPECIAL) FOR SN's 081-0128 & 081-0129 (I-88 OVER CANOE CREEK)				F.A.I. RTE. 88	SECTION D2 BP 2026-01	COUNTY ROCK ISLAND	TOTAL SHEETS 8	SHEET NO. 8
PLOT SCALE = \$SCALE\$	CHECKED -	REVISED -		SCALE:	SHEET	OF	SHEETS	STA.	TO	STA.	CONTRACT NO. 64U96	
PLOT DATE = 11/18/2025	DATE -	REVISED -		ILLINOIS FED. AID PROJECT								