

STATE OF ILLINOIS
DEPARTMENT OF TRANSPORTATION

F.A.P. RTE.	SECTION	COUNTY	TOTAL SHEETS	SHEET NO.
311	(3)CR-2514	KENDALL	25	1
		ILLINOIS	CONTRACT NO. 66N22	

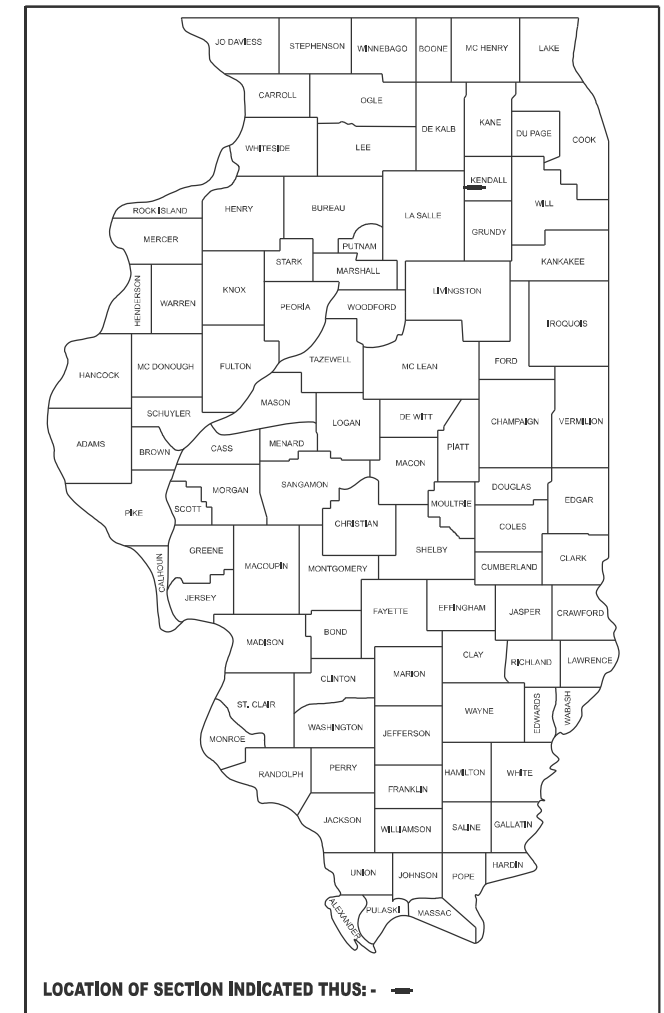
FOR INDEX OF SHEETS, SEE SHEET NO. 2
FOR LIST OF HIGHWAY STANDARDS, SEE SHEET NO.2

TRAFFIC DATA - IL 71
PRINCIPAL ARTERIAL (CLASS II TRUCK ROUTE) ; 2023 ADT = 6300
P.V. = 84.42% S.U. = 7.25% M.U. = 8.33%

PROPOSED HIGHWAY PLANS

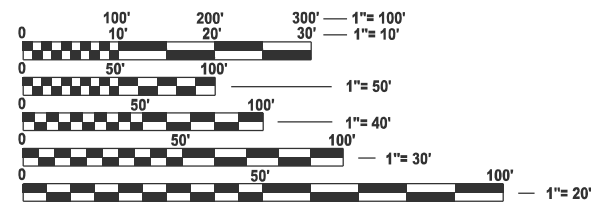
FAP ROUTE 311 (IL 71)
SECTION (3)CR-2514
PROJECT NHPP-CDNG(819)
CULVERT ABANDONMENT
KENDALL COUNTY
C-93-117-24

D-93-079-24



END PROJECT
STA 910+50.00
SN 047-2514
STA 908+00.00
BEGIN PROJECT
STA 904+85.00

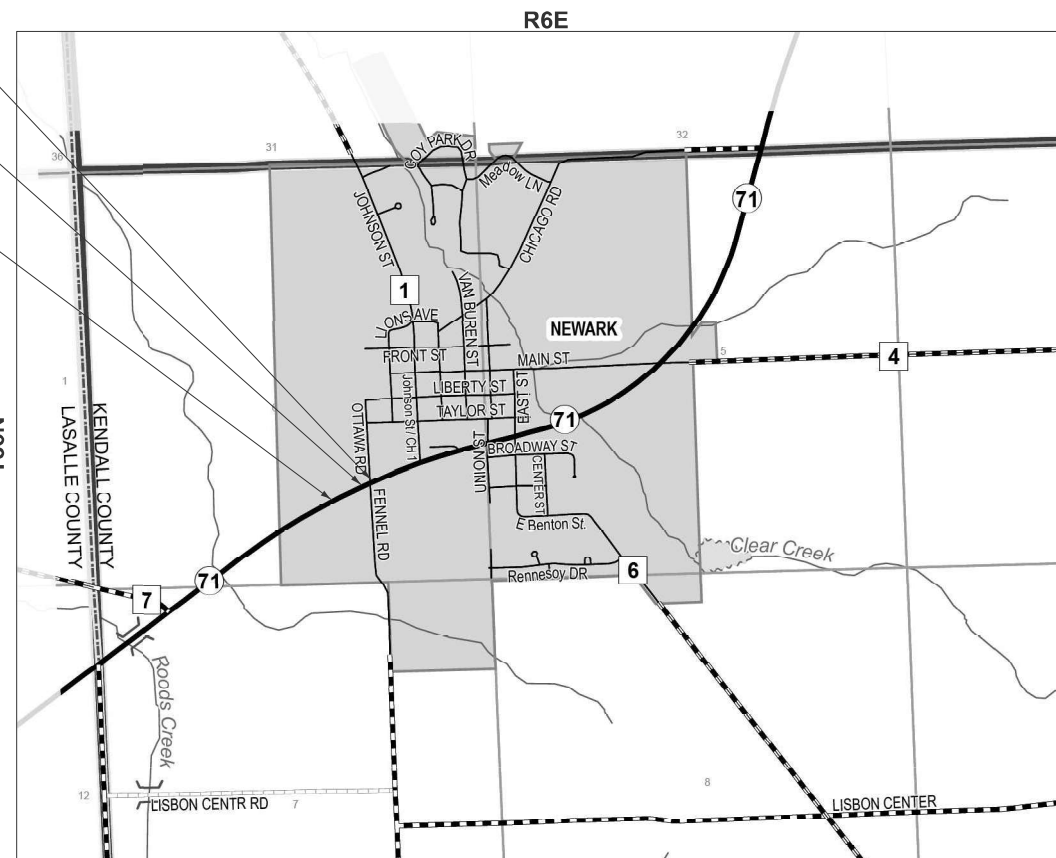
LOCATION MAP
NOT TO SCALE



FULL SIZE PLANS HAVE BEEN PREPARED USING STANDARD ENGINEERING SCALES. REDUCED SIZED PLANS WILL NOT CONFORM TO STANDARD SCALES. IN MAKING MEASUREMENTS ON REDUCED PLANS, THE ABOVE SCALES MAY BE USED.

J.U.L.I.E.
JOINT UTILITY LOCATION INFORMATION FOR EXCAVATION
1-800-892-0123
OR 811

DISTRICT 3 NO. 815-434-6131
PROJECT ENGINEER: DAVID ALEXANDER, PE
SQUAD LEADER: DARCY MITCHELL
TOWNSHIP(S): BIG GROVE TOWNSHIP
CONTRACT NO. 66N22



GROSS LENGTH = 565 FT. = 0.107 MILE
NET LENGTH = 565 FT. = 0.107 MILE



Signed: *Robert Brzezon*
Date: 12/3/2025
License Expires: 11/30/2027
The seal shown above is valid for Sheets 1-25.

STATE OF ILLINOIS
DEPARTMENT OF TRANSPORTATION
December 5, 25
SUBMITTED 20
Trisha Thompson REGIONAL ENGINEER
January 23, 26
Scott A. [Signature] ENGINEER OF DESIGN AND ENVIRONMENT
January 23, 26
[Signature] DIRECTOR OF HIGHWAYS PROJECT IMPLEMENTATION

PRINTED BY THE AUTHORITY
OF THE STATE OF ILLINOIS

INDEX OF SHEETS

1	COVER SHEET
2	INDEX OF SHEETS, HIGHWAY STANDARDS, GENERAL NOTES, COMMITMENTS, & HMA TABLE
3-5	SUMMARY OF QUANTITIES
6	TYPICAL SECTIONS
7-8	SCHEDULE OF QUANTITIES
9	ALIGNMENT, TIES, & BENCHMARKS
10	REMOVAL PLAN
11	PLAN AND PROFILE
12	MAINTENANCE OF TRAFFIC GENERAL NOTES
13	SOIL EROSION AND SEDIMENT CONTROL PLAN
14	LANDSCAPING PLAN
15	SN 047-2514 EXISTING PLAN (FOR INFORMATION ONLY)
16-17	DISTRICT 3 DETAILS
18-25	CROSS SECTIONS

HIGHWAY STANDARDS

000001-09	STANDARD SYMBOLS, ABBREVIATIONS AND PATTERNS
001006	DECIMAL OF AN INCH AND OF A FOOT
280001-07	TEMPORARY EROSION CONTROL SYSTEMS
442201-04	CLASS C AND D PATCHES
542301-03	PRECAST REINFORCED CONCRETE FLARED END SECTION
542401-04	METAL FLARED END SECTION FOR PIPE CULVERTS
602406-11	PRECAST MANHOLE, TYPE A, 6' (1.83 M) DIAMETER
604001-05	FRAME AND LIDS, TYPE 1
635001-02	DELINEATORS
701001-02	OFF-ROAD OPERATIONS, 2L, 2W, MORE THAN 15' (4.5M) AWAY
701006-05	OFF-ROAD OPERATIONS, 2L, 2W, 15' (4.5M) TO 24" (600mm) FROM PAVEMENT EDGE
701201-05	LANE CLOSURE, 2L, 2W, DAY ONLY, FOR SPEEDS ≥ 45 MPH
701206-05	LANE CLOSURE, 2L, 2W, NIGHT ONLY, FOR SPEEDS ≥ 45 MPH
701301-04	LANE CLOSURE, 2L, 2W, SHORT TIME OPERATIONS
701311-03	LANE CLOSURE, 2L, 2W, MOVING OPERATIONS - DAY ONLY
701901-11	TRAFFIC CONTROL DEVICES
720001-01	SIGN PANEL MOUNTING DETAILS
720006-04	SIGN PANEL ERECTION DETAILS
720011-01	METAL POSTS FOR SIGNS, MARKERS, AND DELINEATORS

GENERAL NOTES

- EXCEPT AS NOTED ON THE PLANS, PAVEMENT GRADES SHOWN ARE AT THE TOP OF PAVEMENT SURFACES.
- BEFORE ORDERING PIPE CULVERTS OR PIPE DRAINS, THE CONTRACTOR SHALL CONSULT THE ENGINEER FOR EXACT LENGTHS.
- THE ENGINEER WILL BE THE SOLE JUDGE CONCERNING CURING TIME FOR THE VARIOUS HMA LIFTS.
- THE FINISHED EARTHWORK SHALL HAVE A VEGETATION SUSTAINING SOIL COVERING THE TOP FOUR INCHES (100 MILLIMETERS) IN AREAS TO BE SEEDED OR SODDED. THE VEGETATION SUSTAINING SOIL REQUIRED WILL NOT BE PAID FOR SEPARATELY BUT WILL BE INCLUDED IN THE COST OF FURNISHED EXCAVATION.
- ON EXISTING PAVEMENT WHICH MAY BE SUPERELEVATED, THE NEW HMA PAVEMENT SHALL BE BUILT WITH THE SAME SUPERELEVATION UNLESS NEW SUPERELEVATION RATES ARE GIVEN ON THE PLANS.
- THE FOLLOWING RATES OF APPLICATION HAVE BEEN USED IN CALCULATING PLAN QUANTITIES:
GRANULAR MATERIALS 2.05 TONS / CU YD
- MEMBERS OF JULIE KNOWN TO BE WITHIN THE LIMITS OF THE IMPROVEMENT ARE:
VILLAGE OF NEWARK
AMEREN
AT&T
NICOR GAS
COMCAST

COMMITMENT

TREES THREE (3) INCHES OR GREATER IN DIAMETER AT BREAST HEIGHT WILL NOT BE CLEARED APRIL 1 THROUGH SEPTEMBER 30.

HMA MIXTURE REQUIREMENT TABLE

LOCATIONS:	FENNEL RD.	FENNEL RD.
MIXTURE USE(S):	CLASS D PATCH BOTTOM LIFT(S)	CLASS D PATCH TOP LIFT
BINDER GRADE (PG):	PG 64-22	PG 64-22
DESIGN AIR VOIDS:	4.0% @ N50	4.0% @ N50
MIXTURE COMPOSITION: (MIXTURE GRADATION)	IL 19.0	IL 9.5
FRICTION AGGREGATE:	N/A	MIXTURE C
MIXTURE WEIGHT:	112.0 LB/SY/IN	112.0 LB/SY/IN
QUALITY MANAGEMENT PROGRAM:	QCQA	QCQA
SUBLOT SIZE:	N/A	N/A
DENSITY TEST METHOD:	CORES/NUCLEAR	CORES/NUCLEAR
MATERIAL TRANSFER DEVICE (REQUIRED):	NO	NO

MODEL: C:\projects\01 [Sheet] FILE NAME: 03/2022\22\DOT\CAD\CONNECT\24\06 04 IDOT D3 PTB 208-020 WO 04 IL 71 over Stream near Fennel Rd\CADD Data\CADsheets\0366N22-shh-Gennote.dgn



USER NAME = ahwardtjs	DESIGNED - SK	REVISED -
	DRAWN - ZJW	REVISED -
	CHECKED - JH	REVISED -
PLOT DATE = 12/3/2025	DATE - 11/12/2025	REVISED -

STATE OF ILLINOIS
DEPARTMENT OF TRANSPORTATION

INDEX, STANDARDS, GENERAL NOTES, COMMITMENTS, & HMA TABLE
FAP 311 (IL 71) OVER SN 047-2514

SCALE: N/A SHEET 1 OF 1 SHEETS STA. TO STA.

F.A.P. RTE.	SECTION	COUNTY	TOTAL SHEETS	SHEET NO.
311	(3)CR-2514	KENDALL	25	2
CONTRACT NO. 66N22				
ILLINOIS FED. AID PROJECT				

MODEL: S0001 [Sheet]
 FILE NAME: C:\2025\DOTCAD\CONNECT\24066 04 IDOT D3 PTB 208-020 WO 04 IL 71 over Stream near Fennel Rd\CADD Data\CADsheets\0366N22-sh-S00.dgn

CODE NO.	ITEM	UNIT	TOTAL QUANTITY	CONSTR. CODE	
				80% FEDERAL 20% STATE	
				ROADWAY	
				0044	RURAL
20200100	EARTH EXCAVATION	CU YD	150	150	
20400800	FURNISHED EXCAVATION	CU YD	600	600	
20800150	TRENCH BACKFILL	CU YD	11	11	
25000210	SEEDING, CLASS 2A	ACRE	0.75	0.75	
25000400	NITROGEN FERTILIZER NUTRIENT	POUND	68	68	
25000500	PHOSPHORUS FERTILIZER NUTRIENT	POUND	68	68	
25000600	POTASSIUM FERTILIZER NUTRIENT	POUND	68	68	
25100630	EROSION CONTROL BLANKET	SQ YD	2910	2910	
28000305	TEMPORARY DITCH CHECKS	FOOT	149	149	
28000500	INLET AND PIPE PROTECTION	EACH	5	5	
28100105	STONE RIPRAP, CLASS A3	SQ YD	20	20	
28200200	FILTER FABRIC	SQ YD	20	20	
44201769	CLASS D PATCHES, TYPE III, 10 INCH	SQ YD	17	17	
48102100	AGGREGATE WEDGE SHOULDER, TYPE B	TON	14	14	

* DENOTES SPECIALTY ITEM



USER NAME = ahevrdajs	DESIGNED - SK	REVISED -
	DRAWN - ZJW	REVISED -
	CHECKED - JH	REVISED -
PLOT DATE = 11/11/2025	DATE - 11/12/2025	REVISED -

**STATE OF ILLINOIS
 DEPARTMENT OF TRANSPORTATION**

**SUMMARY OF QUANTITIES
 FAP 311 (IL 71) OVER SN 047-2514**

SCALE: N/A SHEET 1 OF 3 SHEETS STA. TO STA.

F.A.P. RTE.	SECTION	COUNTY	TOTAL SHEETS	SHEET NO.
311	(3)CR-2514	KENDALL	25	3
CONTRACT NO. 66N22				
ILLINOIS FED. AID PROJECT				

MODEL: S0002 (Sheet)
 FILE NAME: C:\2025\DOTCAD\CONNECT\24066 04 IDOT D3 PTB 208-020 WO 04 IL 71 over Stream near Fennel Rd\CADD Data\CADsheets\0366N22-sh-S00.dgn

CODE NO.	ITEM	UNIT	TOTAL QUANTITY	CONSTR. CODE	
				80% FEDERAL 20% STATE	
				ROADWAY	
				0044	RURAL
50104400	CONCRETE HEADWALL REMOVAL	EACH	4		4
50105220	PIPE CULVERT REMOVAL	FOOT	48		48
54213675	PRECAST REINFORCED CONCRETE FLARED END SECTIONS 30"	EACH	1		1
54262715	METAL FLARED END SECTIONS 15"	EACH	1		1
54262730	METAL FLARED END SECTIONS 30"	EACH	1		1
542A1075	PIPE CULVERTS, CLASS A, TYPE 2 30"	FOOT	49		49
542D0235	PIPE CULVERTS, CLASS D, TYPE 1 30"	FOOT	114		114
542D1060	PIPE CULVERTS, CLASS D, TYPE 2 15"	FOOT	22		22
54390230	INSERTION CULVERT LINER 36"	FOOT	62		62
60223800	MANHOLES, TYPE A, 6'-DIAMETER, TYPE 1 FRAME, CLOSED LID	EACH	1		1
63200310	GUARDRAIL REMOVAL	FOOT	576		576
63500105	DELINEATORS	EACH	2		2
* 66900200	NON-SPECIAL WASTE DISPOSAL	CUYD	116		116
* 66900530	SOIL DISPOSAL ANALYSIS	EACH	2		2

* DENOTES SPECIALTY ITEM



USER NAME = ahevrdjs	DESIGNED - SK	REVISED -
	DRAWN - ZJW	REVISED -
	CHECKED - JH	REVISED -
PLOT DATE = 11/11/2025	DATE - 11/12/2025	REVISED -

STATE OF ILLINOIS
 DEPARTMENT OF TRANSPORTATION

SUMMARY OF QUANTITIES
 FAP 311 (IL 71) OVER SN 047-2514

SCALE: N/A SHEET 2 OF 3 SHEETS STA. TO STA.

F.A.P. RTE.	SECTION	COUNTY	TOTAL SHEETS	SHEET NO.
311	(3)CR-2514	KENDALL	25	4
CONTRACT NO. 66N22				
ILLINOIS FED. AID PROJECT				

MODEL: S0003 (Sheet)
 FILE NAME: C:\2025\DOT\CAD\CONNECT\24066 04 IDOT D3 PTB 208-020 WO 04 IL 71 over Stream near Fennel Rd\CADD Data\CADsheets\0366N22-sh-S00.dgn

CODE NO.	ITEM	UNIT	TOTAL QUANTITY	CONSTR. CODE	
				80% FEDERAL 20% STATE	
				ROADWAY	
				0044	RURAL
* 66901001	REGULATED SUBSTANCES PRE-CONSTRUCTION PLAN	L SUM	1	1	
* 66901003	REGULATED SUBSTANCES FINAL CONSTRUCTION REPORT	L SUM	1	1	
* 66901006	REGULATED SUBSTANCES MONITORING	CAL DA	4	4	
67100100	MOBILIZATION	L SUM	1	1	
70100450	TRAFFIC CONTROL AND PROTECTION, STANDARD 701201	L SUM	1	1	
70100455	TRAFFIC CONTROL AND PROTECTION, STANDARD 701206	L SUM	1	1	
70200100	NIGHTTIME WORK ZONE LIGHTING	L SUM	1	1	
* 72000100	SIGN PANEL - TYPE 1	SQ FT	20	20	
* 72400100	REMOVE SIGN PANEL ASSEMBLY - TYPE A	EACH	2	2	
* 72400310	REMOVE SIGN PANEL - TYPE 1	SQ FT	6	6	
73000100	WOOD SIGN SUPPORT	FOOT	47	47	
Z0013798	CONSTRUCTION LAYOUT	L SUM	1	1	
X6050208	FILLING EXISTING CULVERTS	CU YD	44	44	
X6350120	DELINEATOR REMOVAL	EACH	1	1	

* DENOTES SPECIALTY ITEM



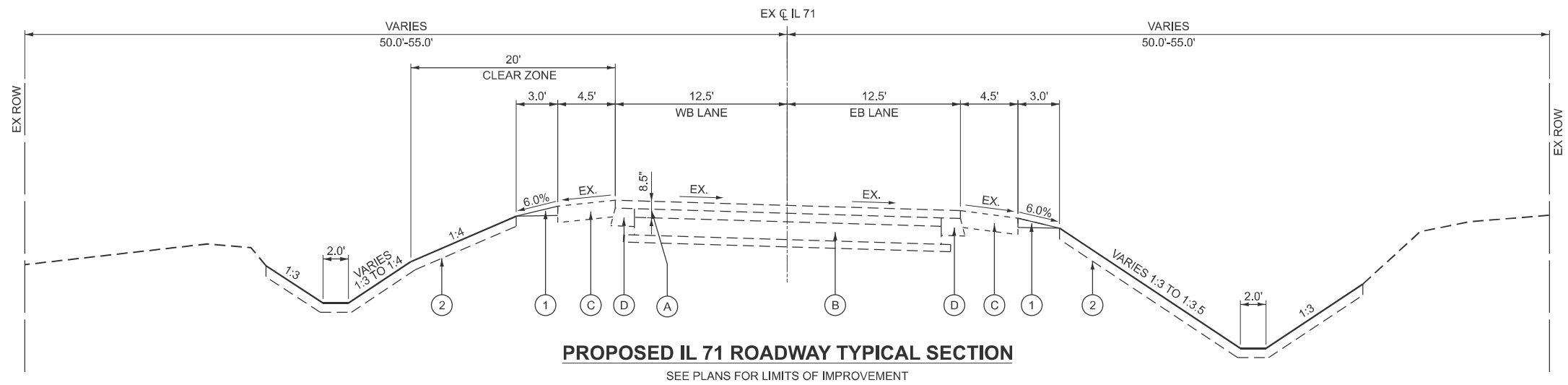
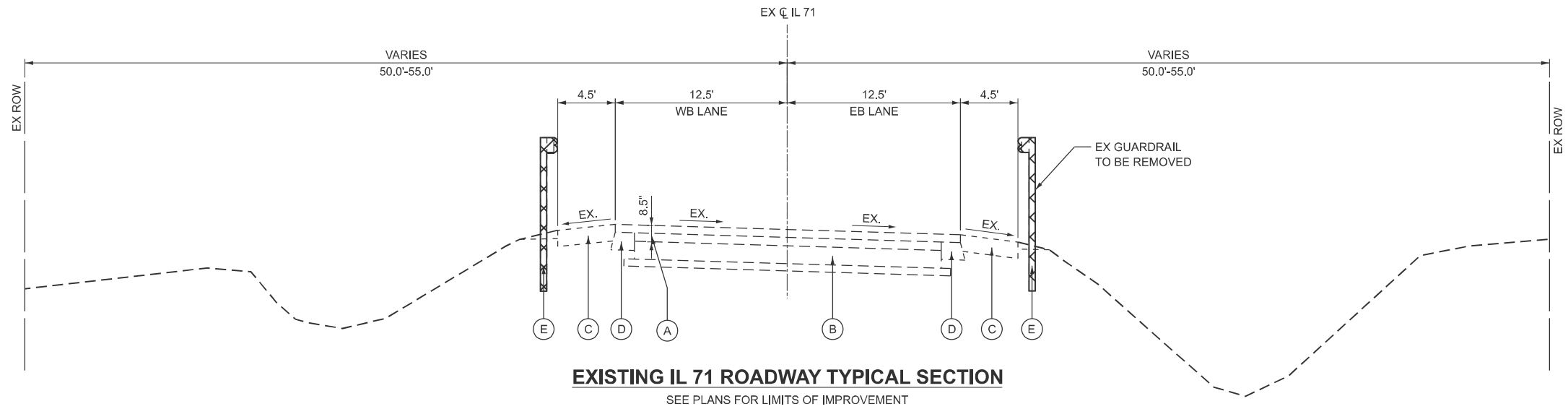
USER NAME = ahevdejs	DESIGNED - SK	REVISED -
	DRAWN - ZJW	REVISED -
	CHECKED - JH	REVISED -
PLOT DATE = 11/12/2025	DATE - 11/12/2025	REVISED -

STATE OF ILLINOIS
 DEPARTMENT OF TRANSPORTATION

SUMMARY OF QUANTITIES
 FAP 311 (IL 71) OVER SN 047-2514

SCALE: N/A SHEET 3 OF 3 SHEETS STA. TO STA.

F.A.P. RTE.	SECTION	COUNTY	TOTAL SHEETS	SHEET NO.
311	(3)CR-2514	KENDALL	25	5
CONTRACT NO. 66N22				
ILLINOIS FED. AID PROJECT				



EXISTING

- (A) HMA OVERLAY, ±8 1/2"
- (B) PCC PAVEMENT, 9"
- (C) HMA SHOULDER
- (D) HMA WIDENING
- (E) GUARDRAIL
- ⊗ REMOVAL ITEM

PROPOSED

- (1) AGGREGATE WEDGE SHOULDER, TYPE B
- (2) TOPSOIL AND SEEDING

MODEL: TYP01-45 (Sheet)
FILE NAME: C:\2022\23\DOTCAD CONNECT\24006.04 IDOT D3 PTB 208-020 WO 04 IL 71 over Stream near Fennel Rd\CADD Data\CADsheets\24006N22-shh-Typicals.dgn

EFK Moen
Civil Engineering Design

USER NAME = jkratz	DESIGNED - SK	REVISED -
	DRAWN - ZJW	REVISED -
	CHECKED - JH	REVISED -
PLOT DATE = 11/11/2025	DATE - 11/12/2025	REVISED -

STATE OF ILLINOIS
DEPARTMENT OF TRANSPORTATION

TYPICAL SECTIONS
FAP 311 (IL 71) OVER SN 047-2514

SCALE: NONE SHEET 1 OF 1 SHEETS STA. TO STA.

F.A.P. RTE.	SECTION	COUNTY	TOTAL SHEETS	SHEET NO.
311	(3)CR-2514	KENDALL	25	6
CONTRACT NO. 66N22				
ILLINOIS FED. AID PROJECT				

MODEL: Sched01 (Sheet)
 FILE NAME: O:\2022R3\DOTCAD\CONNECT\24006.04\DOT D3 PTB 208-020\WO 04 IL 71 over Stream near Fennel Rd\CADD Data\CADsheets\ID366N22-sh-Schedule.dgn

EARTHWORK SCHEDULE							
1		2		3		4	
LOCATION		EARTH EXCAVATION	REMOVAL AND DISPOSAL OF UNSUITABLE MATERIAL	EARTH EXCAVATION ADJUSTED FOR SHRINKAGE (25%)	EMBANKMENT	EARTH BALANCE WASTE (+) OR SHORTAGE (-)	
TO	FROM	CU YD	CU YD	CU YD	CU YD	CU YD	
IL 71	904+90.00	905+00.00	0.4	0.0	0.3	0.9	-0.6
IL 71	905+00.00	905+50.00	1.0	0.0	0.8	11.1	-10.4
IL 71	905+50.00	906+00.00	0.4	0.0	0.3	21.5	-21.2
IL 71	906+00.00	906+50.00	10.2	1.0	6.9	41.8	-35.0
IL 71	906+50.00	907+00.00	0.1	0.0	0.1	51.5	-51.4
IL 71	907+00.00	907+50.00	0.1	0.0	0.1	55.6	-55.5
IL 71	907+50.00	908+00.00	0.1	0.0	0.1	58.5	-58.5
IL 71	908+00.00	908+50.00	10.2	1.0	6.9	41.1	-34.2
IL 71	908+50.00	909+00.00	0.5	0.0	0.4	50.8	-50.4
IL 71	909+00.00	909+50.00	0.0	0.0	0.0	49.0	-49.0
IL 71	909+50.00	910+00.00	0.1	0.0	0.1	39.9	-39.8
IL 71	910+00.00	910+14.17	4.6	0.0	3.5	12.8	-9.4
RIGHT SIDE SUBTOTAL			27.6	0	19.2	434.4	-415.2
IL 71	904+85.00	904+90.00	0.5	0.0	0.4	0.3	0.1
IL 71	904+90.00	905+50.00	6.0	0.0	4.5	4.7	-0.2
IL 71	905+50.00	906+00.00	15.0	1.0	10.5	5.4	5.1
IL 71	906+00.00	906+50.00	20.0	1.0	14.3	0.7	7.6
IL 71	906+50.00	907+00.00	20.5	1.0	14.6	9.1	5.5
IL 71	907+00.00	907+50.00	15.4	1.0	10.8	26.3	-15.5
IL 71	907+50.00	908+00.00	12.2	1.0	8.4	53.0	-44.7
IL 71	908+00.00	908+50.00	12.2	1.0	8.4	58.5	-50.1
IL 71	908+50.00	909+00.00	13.6	1.0	9.5	45.3	-35.8
IL 71	909+00.00	909+50.00	5.0	0.0	3.8	50.6	-46.9
IL 71	909+50.00	910+00.00	1.5	0.0	1.1	12.9	-11.8
LEFT SIDE SUBTOTAL			121.8	5	86.1	272.8	-186.7
TOTAL			150	5	110	710	-600

COLUMN 1: LOCATION FROM PLANS.
 COLUMN 2: CUT QUANTITIES FROM CROSS SECTIONS. DOES NOT INCLUDE UNSUITABLE MATERIAL AND/OR TOPSOIL.
 COLUMN 3: CUT MATERIAL THAT IS DETERMINED TO BE EITHER UNSTABLE OR UNSUITABLE FOR USE IN EMBANKMENT. NOMINAL QUANTITY OF 5% OF EARTH EXCAVATION (COLUMN 2) PROVIDED.
 COLUMN 4: QUANTITIES OF EARTH EXCAVATION ADJUSTED FOR A SHRINKAGE FACTOR OF 25%.
 COLUMN 5: QUANTITIES OF EMBANKMENT (FILL) FROM CROSS SECTIONS.
 COLUMN 6: EARTHWORK BALANCE (COLUMN 4 - COLUMN 5)
 (+) = QUANTITY OF EXTRA EXCAVATION TO BE WASTED.
 (-) = QUANTITY OF FURNISHED EXCAVATION NEEDED.



USER NAME = ahevrdajs	DESIGNED - SK	REVISED -
	DRAWN - ZJW	REVISED -
	CHECKED - JH	REVISED -
PLOT DATE = 11/11/2025	DATE - 11/12/2025	REVISED -

STATE OF ILLINOIS
 DEPARTMENT OF TRANSPORTATION

SCHEDULE OF QUANTITIES
 FAP 311 (IL 71) OVER SN 047-2514

SCALE: N/A SHEET 1 OF 2 SHEETS STA. TO STA.

F.A.P. RTE.	SECTION	COUNTY	TOTAL SHEETS	SHEET NO.
311	(3)CR-2514	KENDALL	25	7
CONTRACT NO. 66N22				
ILLINOIS FED. AID PROJECT				

PIPE SCHEDULE											
SLOPE	FROM			TO			TRENCH BACKFILL	PIPE CULVERTS, CLASS A, TYPE 2, 30"	PIPE CULVERTS, CLASS D, TYPE 2, 15"	PIPE CULVERTS, CLASS D, TYPE 1, 30"	INSERTION CULVERT LINER, 36"
	STATION	OFFSET	INVERT ELEVATION	STATION	OFFSET	INVERT ELEVATION					
0.79%	909+54.62	37.1' RT	656.30	908+39.99	38.0' RT	655.40				114	
0.83%	909+56.19	35.0' RT	656.40	909+15.08	37.8' LT	655.70		22			84
0.61%	910+07.97	38.4' RT	656.80	909+58.68	37.1' RT	656.50	10.1	49			
TOTAL							11	49	22	114	84

PROPOSED PAVEMENT SCHEDULE						
LOCATION	FROM STATION	OFFSET	TO STATION	OFFSET	CLASS D PATCHES, TYPE III 10 INCH	AGGREGATE WEDGE SHOULDERS TYPE B
					SQ YD	TON
FENNEL RD	9+51.90	13.08' LT	9+65.85	9.04' RT	17	
IL 71	900+80.01	LT	909+46.22			6.2
IL 71	905+83.99	RT	909+00.00			6.5
FENNEL RD	9+49.58	LT	9+57.58			0.6
FENNEL RD	9+59.31	RT	9+67.03			0.3
TOTAL					17	14

LANDSCAPING SCHEDULE							
FROM STATION	TO STATION	OFFSET	AREA	SEEDING CLASS 2A	NITROGEN FERTILIZER NUTRIENT	PHOSPHORUS FERTILIZER NUTRIENT	POTASSIUM FERTILIZER NUTRIENT
904+85.00	910+00.00	LT	12756.38	0.29	26.4	26.4	26.4
904+90.00	910+00.00	RT	12514.76	0.29	25.9	25.9	25.9
910+00.00	910+50.00	RT	886.41	0.02	1.8	1.8	1.8
TOTAL				0.60	54.0	54.0	54.0
ROUNDED TOTAL				0.75	68	68	68

EXISTING DRAINAGE SCHEDULE								
STRUCTURE TYPE	LOCATION	FROM STA	OFFSET	TO STA	OFFSET	CONCRETE HEADWALL REMOVAL	PIPE CULVERT REMOVAL	FILLING EXISTING CULVERTS
						EACH	FOOT	CU YD
BOX CULVERT	IL 71	907+99.98	22.1' LT	908+00.02	20.2' RT	2		44
PIPE CULVERT	IL 71	909+20.28	27.7' LT	909+50.89	25.4' RT	2		
PIPE CULVERT	FENNEL RD	9+49.52	29.1' LT	9+65.06	15.5' RT		48	
TOTAL						4	48	44

EROSION CONTROL SCHEDULE					
FROM STATION	TO STATION	OFFSET	EROSION CONTROL BLANKET	TEMPORARY DITCH CHECKS	INLET AND PIPE PROTECTION
			SQ YD	FOOT	EACH
904+85.00	910+00.00	LT	1416.5	71.5	
904+90.00	910+00.00	RT	1394.4	76.9	
910+00.00	910+50.00	RT	98.5		
904+16.33		38.7' RT			1
904+16.98		33.1' RT			1
909+50.92		25.9' RT			1
910+06.32		38.2' RT			1
910+26.59		43.9' RT			1
TOTAL			2910	149	5

GUARDRAIL REMOVAL SCHEDULE			
FROM STATION	TO STATION	OFFSET	GUARDRAIL REMOVAL
			FOOT
905+83.99	909+00.00	RT	316
906+86.01	909+46.22	LT	260
TOTAL			576

DRAINAGE STRUCTURE SCHEDULE							
STATION	OFFSET	RIM ELEVATION	INVERT ELEVATION	PRECAST REINFORCED CONCRETE FLARED END SECTIONS 30"	METAL FLARED END SECTIONS 15"	METAL FLARED END SECTIONS 30"	MANHOLES, TYPE A, 6'-DIAMETER, TYPE 1 FRAME, CLOSED LID
				EACH	EACH	EACH	EACH
908+39.99	38.0' RT		655.40				
909+15.08	37.8' LT		655.70		1	1	
909+56.70	37.1' RT	661.00	656.50 E 656.40 NW 656.30 SW				1
910+07.97	38.4' RT		656.80	1			
TOTAL				1	1	1	1

RIPRAP SCHEDULE					
FROM STATION	OFFSET	TO STATION	OFFSET	STONE RIPRAP, CLASS A3	FILTER FABRIC
				SQ YD	SQ YD
910+14.17	38.5' RT	910+32.04	39.3' RT	19.8	19.8
TOTAL				20	20

SIGNING SCHEDULE											
STATION	OFFSET	MOUNTING TYPE	DESIGNATION	DESCRIPTION	PANEL WIDTH	PANEL HEIGHT	PANEL AREA	REMOVE SIGN PANEL ASSEMBLY - TYPE A	REMOVE SIGN PANEL - TYPE 1	SIGN PANEL - TYPE 1	WOOD SIGN SUPPORT
					INCH	INCH	SQ FT	EACH	SQ FT	SQ FT	FOOT
905+00.00	28' LT	GROUND	W14-3	NO PASSING ZONE	48	36	5.6		5.6	5.6	15.2
905+54.74	23.5' RT	GROUND	CUSTOM	NEWARK POPULATION							
908+31.50	32' LT	GROUND	M3-4P	CARDINAL DIRECTION	24	12	2.0	1		2.0	15.2
908+31.50	32' LT	GROUND	M1-I100	STATE ROUTE	24	24	4.0			4.0	
910+00.00	57' RT	GROUND	R1-1	STOP	30	30	6.3	1		6.3	15.7
910+00.00	57' RT	GROUND	W4-4P	CROSS TRAFFIC DOES NOT STOP	24	12	2.0			2.0	
TOTAL								2	6	20	47

DELINEATOR SCHEDULE			
STATION	OFFSET	DELINEATORS	DELINEATOR REMOVAL
		EACH	EACH
908+40.00	34.5' RT	1	
909+19.00	37.6' LT	1	
909+48.00	26.3' RT		1
TOTAL		2	1

MODEL: Sched02 (Sheet) FILE NAME: O:\2022\3\DOTCAD CONNECT\24006.04 IDOT D3 PTB 208-020 WO 04 IL 71 over Stream near Fennel Rd\CADD Data\CADSheets\366N22-sh-Schedule.dgn



USER NAME = ahevrdjs	DESIGNED - SK	REVISED -
	DRAWN - ZJW	REVISED -
	CHECKED - JH	REVISED -
PLOT DATE = 12/2/2025	DATE - 11/12/2025	REVISED -

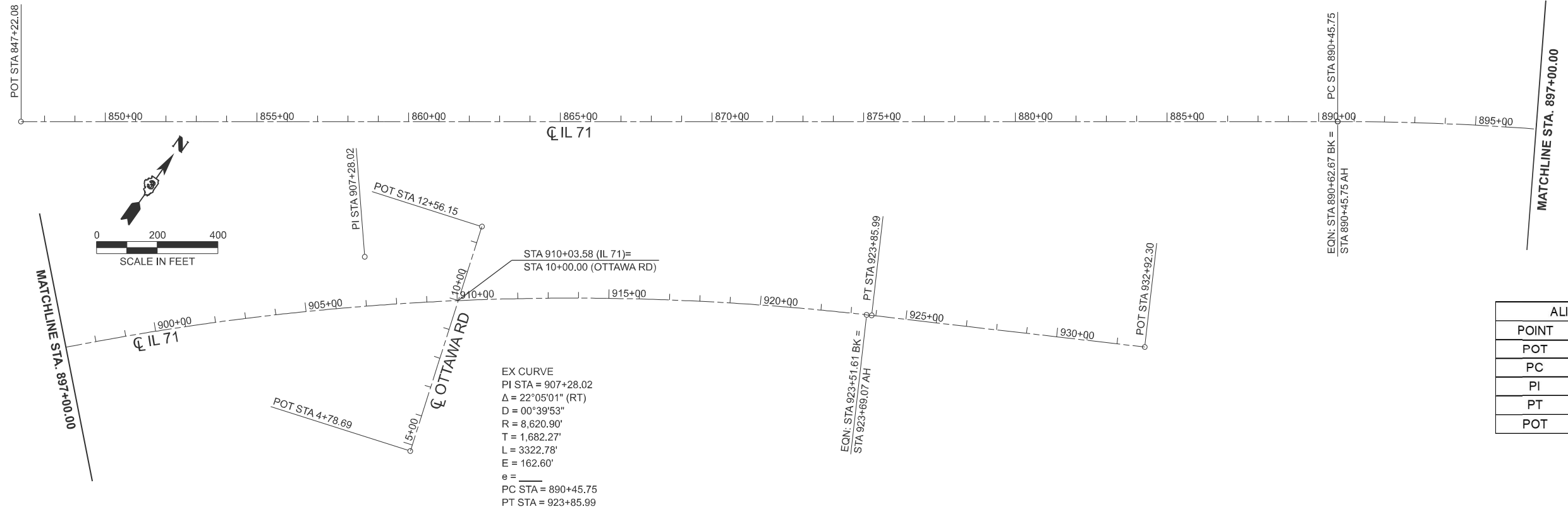
STATE OF ILLINOIS
DEPARTMENT OF TRANSPORTATION

SCHEDULE OF QUANTITIES
FAP 311 (IL 71) OVER SN 047-2514

SCALE: N/A SHEET 2 OF 2 SHEETS STA. TO STA.

F.A.P RTE.	SECTION	COUNTY	TOTAL SHEETS	SHEET NO.
311	(3)CR-2514	KENDALL	25	8
CONTRACT NO. 66N22				
ILLINOIS FED. AID PROJECT				

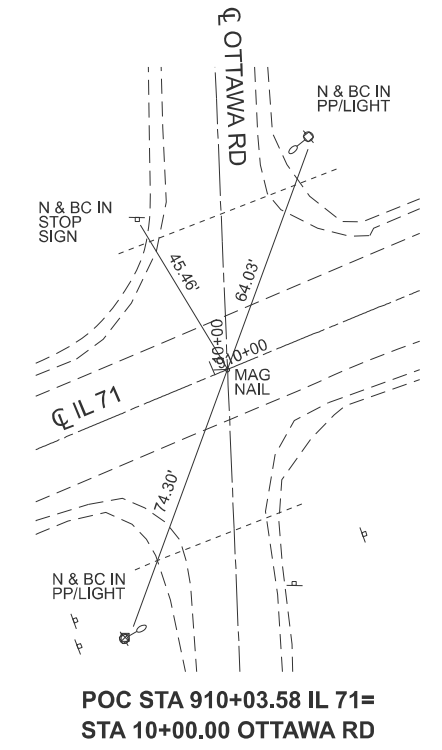
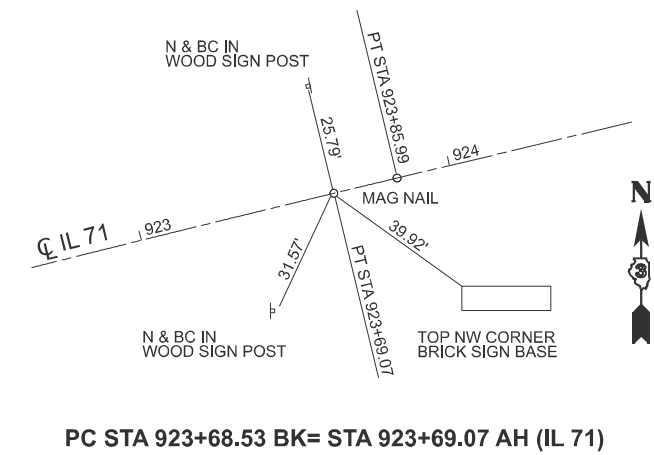
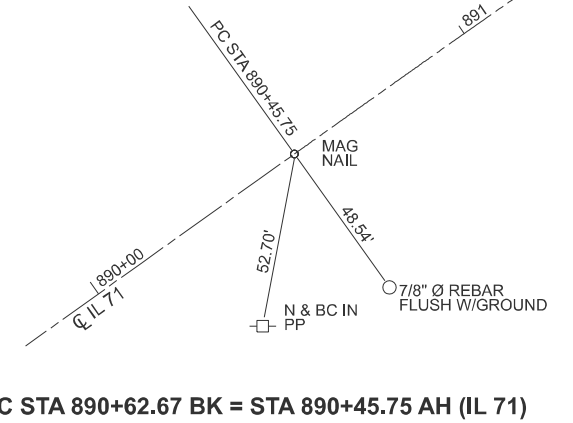
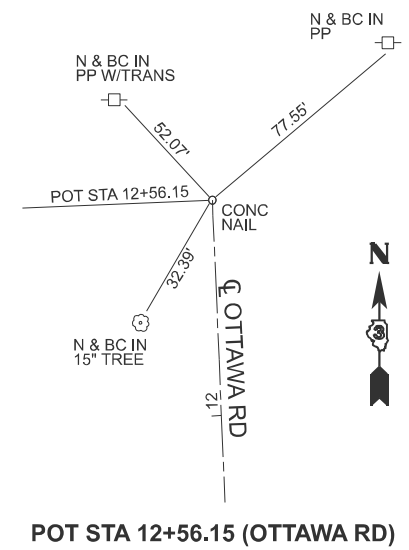
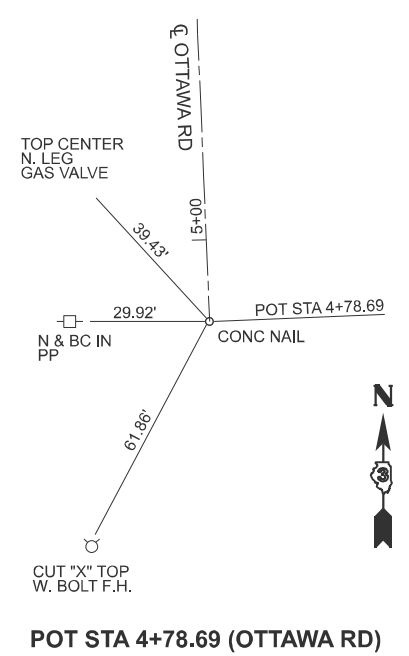
NOTE:
 1. TOPOGRAPHIC SURVEY OF IL 71 COORDINATES ARE REFERENCED TO THE ILLINOIS STATE PLANE COORDINATE SYSTEM, EAST ZONE (NAD83-2011 ADJ).



ALIGNMENT COORDINATES - CL IL 71			
POINT	STATION	NORTHING	EASTING
POT	847+22.08	1769115.139	909925.168
PC	890+45.75	1771637.154	913457.90
PI	907+28.02	1772614.604	914827.065
PT	923+85.99	1773005.59	916463.269
POT	932+92.30	1773216.23	917344.758

ALIGNMENT COORDINATES - CL OTTAWA RD			
POINT	STATION	NORTHING	EASTING
POT	4+78.69	1772063.936	915187.827
POT	12+56.15	1772840.732	915155.71

CONTROL POINTS AND BENCHMARKS						
POINT BM #	STATION	OFFSET	NORTHING	EASTING	ELEVATION	DESCRIPTION
12RB1969	910+82.61	-150.8834	1772754.631	915182.952	663.41	NGS MONUMENT (FROM FB FAP 311-13-1 PG 16)
CP2	910+34.72	-28.6429	1772623.168	915184.211	663.76	MAG NAIL @ N.E QUAD IL 71 & OTTAWA ST.
CP1	907+43.98	-20.4523	1772500.464	914919.616	658.73	80D SPIKE @ NW END OF GUARDRAIL SN 047-2514
BM476	904+23.99	53.9594	1772296.723	914662.685	653.35	EX RR SPIKE W PP @ GRAINCO FS



MODEL: ATB (Sheet)
 FILE NAME: C:\2022\23\DOTCAD\CONNECT\24006.04\DOT D3 PTB 208-020\WO 04 IL 71 over Stream near Fennel Rd\CADD Data\CADsheets\66N22-sh-A1B.dgn

EFK Moen
 Civil Engineering Design

USER NAME = jkratz	DESIGNED - SK	REVISED -
	DRAWN - ZJW	REVISED -
	CHECKED - JH	REVISED -
PLOT DATE = 11/11/2025	DATE - 11/12/2025	REVISED -

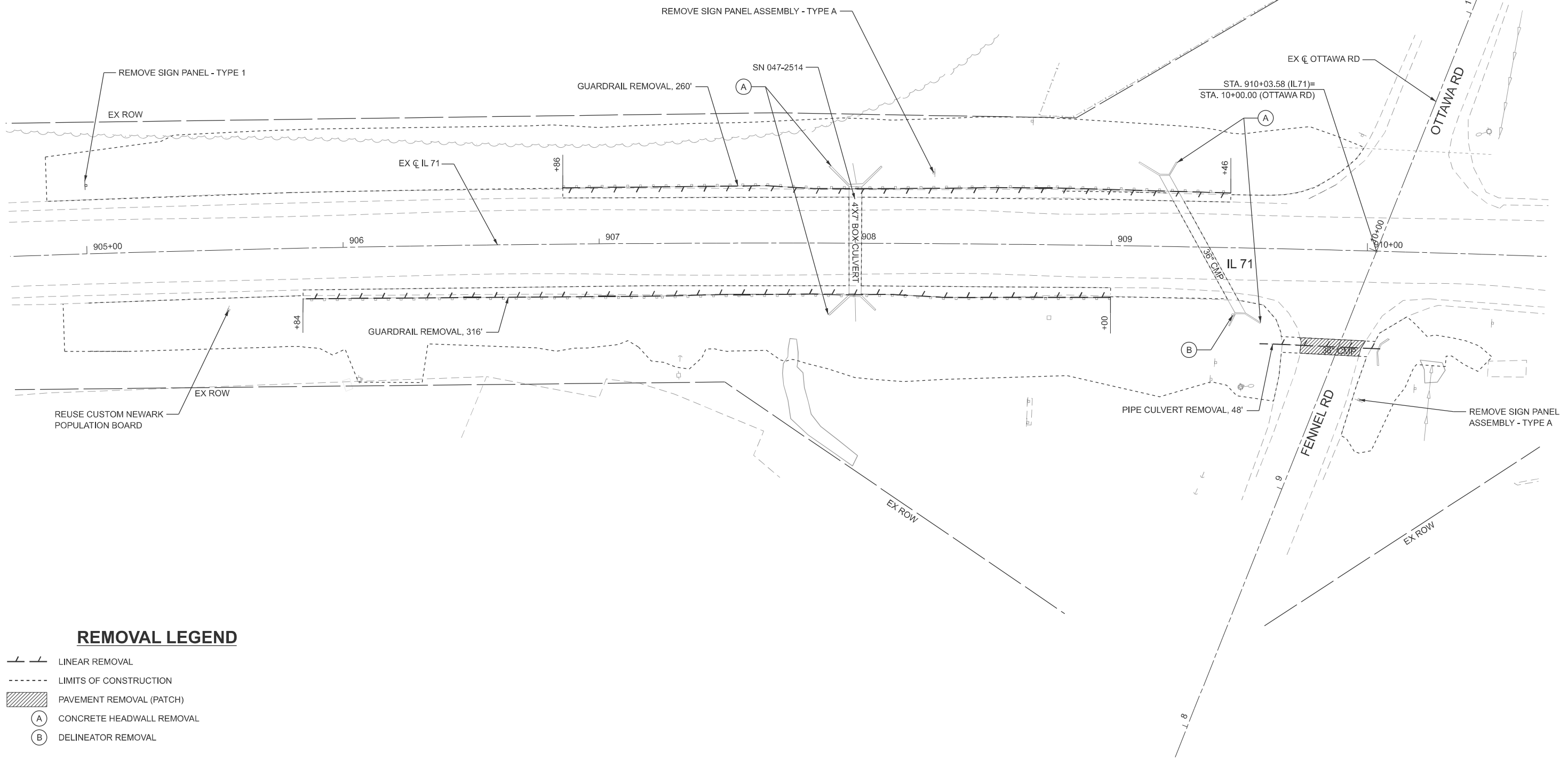
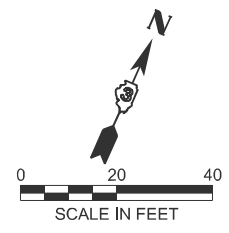
STATE OF ILLINOIS
 DEPARTMENT OF TRANSPORTATION

ALIGNMENT, TIES, & BENCHMARKS
 FAP 311 (IL 71) OVER SN 047-2514

SCALE: 1"=200' SHEET 1 OF 1 SHEETS STA. 847+22.08 TO STA. 932+92.30

F.A.P. RTE.	SECTION	COUNTY	TOTAL SHEETS	SHEET NO.
311	(3)CR-2514	KENDALL	25	9

CONTRACT NO. 66N22
 ILLINOIS FED. AID PROJECT



REMOVAL LEGEND

- LINEAR REMOVAL
- LIMITS OF CONSTRUCTION
- PAVEMENT REMOVAL (PATCH)
- CONCRETE HEADWALL REMOVAL
- DELINEATOR REMOVAL

MODEL: Removal - Plan 1
 FILE NAME: C:\2022R3\DOTCAD\CONNECT\24006.04\DOT D3 PTB 208-020\WO 04 IL 71 over Stream near Fennel Rd\CADD Data\CADsheets\66N22-shr-Removals.dgn

EFK Moen
Civil Engineering Design

USER NAME = jkratz	DESIGNED - SK	REVISED -
	DRAWN - ZJW	REVISED -
	CHECKED - JH	REVISED -
PLOT DATE = 11/11/2025	DATE - 11/12/2025	REVISED -

**STATE OF ILLINOIS
DEPARTMENT OF TRANSPORTATION**

**REMOVAL PLAN
FAP 311 (IL 71) OVER SN 047-2514**

SCALE: 1"=20' SHEET 1 OF 1 SHEETS STA. A 904+70.00 TO STA. A 910+70.00

F.A.P. RTE.	SECTION	COUNTY	TOTAL SHEETS	SHEET NO.
311	(3)CR-2514	KENDALL	25	10
CONTRACT NO. 66N22				
ILLINOIS FED. AID PROJECT				

STAGING SEQUENCE OF CONSTRUCTION

IL 71

TRAFFIC:

- 1. UTILIZE STANDARDS 701006 TO ALTERNATE CLOSURES OF THE EB AND WB SHOULDERS ALONG IL 71. UTILIZE STANDARD 701201 TO ALTERNATE CLOSURES OF THE EB AND WB LANE OF IL 71 AS NEEDED FOR EQUIPMENT AND LABOR.

CONSTRUCTION:

- 1. PLUG AND FILL THE EX CULVERT SN 047-2514, REMOVE EX HEADWALLS AND CULVERT END SECTIONS, PLACE PR LONGITUDINAL PIPE CULVERT AND MANHOLE, EXTEND CULVERT #1410 AT STA. 909+25 AND INSTALL LINER, REMOVE EX GUARDRAIL, CONSTRUCT PR AGGREGATE SHOULDER WEDGES, AND GRADE FOR FINAL CONDITIONS.

FENNEL RD

TRAFFIC:

- 1. UTILIZE STANDARD 701201 TO ALTERNATE CLOSURES OF THE NB AND SB LANES OF FENNEL RD. SIMILARLY, UTILIZE STANDARD 701206 FOR NIGHTTIME LANE CLOSURES ON FENNEL RD, IF NECESSARY.

CONSTRUCTION:

- 1. REMOVE EX CULVERT AND INSTALL PR CULVERT AND APPURTENANCES AND CONSTRUCT PATCH AND SHOULDERS OVER FENNEL RD CULVERT.

MODEL: MOT-Cemnote01 [Sheet]
FILE NAME: C:\2022\23\DOTCAD CONNECT\24006.04 IDOT D3 PTB 208-020 WO 04 IL 71 over Stream near Fennel Rd\CADD Data\CADsheets\ID366N22-shh-Staging-Cemnote.dgn

EFK Moen
Civil Engineering Design

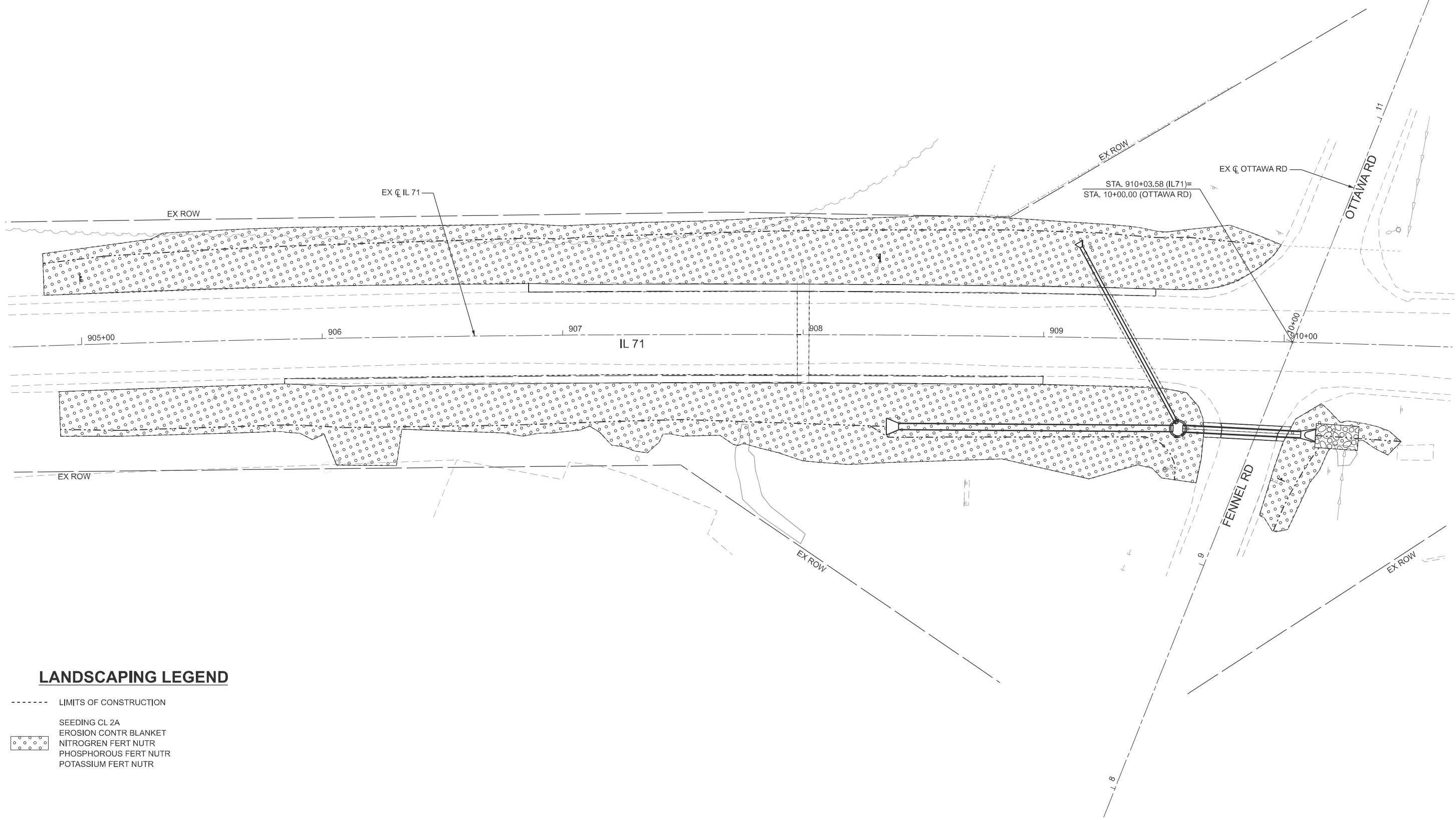
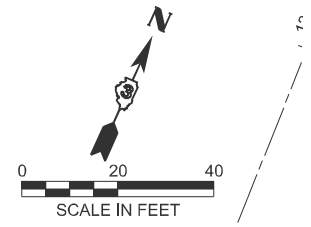
USER NAME = jkratz	DESIGNED - SK	REVISED -
	DRAWN - ZJW	REVISED -
	CHECKED - JH	REVISED -
PLOT DATE = 11/11/2025	DATE - 11/12/2025	REVISED -

**STATE OF ILLINOIS
DEPARTMENT OF TRANSPORTATION**

**MAINTENANCE OF TRAFFIC GENERAL NOTES
FAP 311 (IL 71) OVER SN 047-2514**

SCALE: N/A SHEET 1 OF 1 SHEETS STA. TO STA.

F.A.P. RTE.	SECTION	COUNTY	TOTAL SHEETS	SHEET NO.
311	(3)CR-2514	KENDALL	25	12
CONTRACT NO. 66N22				
ILLINOIS FED. AID PROJECT				



LANDSCAPING LEGEND

- LIMITS OF CONSTRUCTION
- SEEDING CL 2A
- EROSION CONTR BLANKET
- NITROGEN FERT NUTR
- PHOSPHOROUS FERT NUTR
- POTASSIUM FERT NUTR

MODEL: LINDSCP02
FILE NAME: C:\2022\23\DOTCAD CONNECT\24006.04 IDOT D3 PTB 208-020 WO 04 IL 71 over Stream near Fennel Rd\CADD Data\CADSheets\24-04-IL71-Landscp.dgn

EFK Moen
Civil Engineering Design

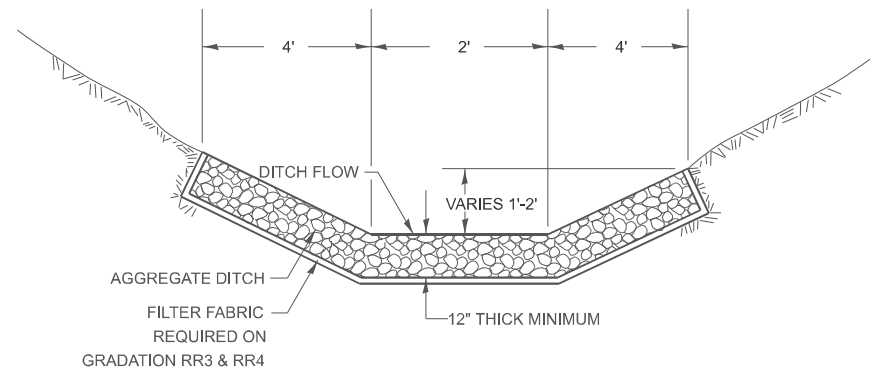
USER NAME = zbackes	DESIGNED - SK	REVISED -
	DRAWN - ZJW	REVISED -
	CHECKED - JH	REVISED -
PLOT DATE = 11/10/2025	DATE - 11/12/2025	REVISED -

**STATE OF ILLINOIS
DEPARTMENT OF TRANSPORTATION**

**LANDSCAPING PLAN
FAP 311 (IL 71) OVER SN 047-2514**

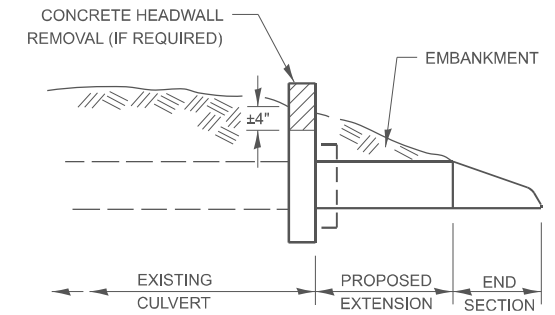
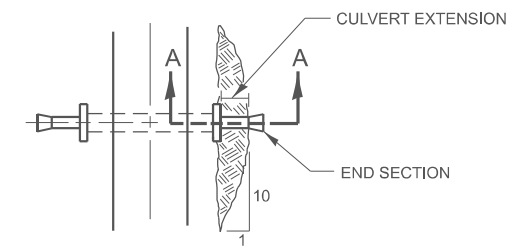
SCALE: 1"=20' SHEET 1 OF 1 SHEETS STA. A 904+70.00 TO STA. A 910+70.00

F.A.P. RTE.	SECTION	COUNTY	TOTAL SHEETS	SHEET NO.
311	(3)CR-2514	KENDALL	25	14
CONTRACT NO. 66N22				
ILLINOIS FED. AID PROJECT				



CLASS A3 WILL BE REQUIRED ON THIS PROJECT AT THE LOCATION SHOWN ON THE PLANS.

AGGREGATE DITCH FOR FLEXIBLE DITCH LINING



SECTION A-A

PLAN AT CULVERT EXTENSIONS

MODEL: C:\projects\2\Sheet1.dwg FILE NAME: C:\2022\23\DOTCAD\CONNECT\24006.04.IDOT.D3.PTB.208-020.WO.04.IL.71.Over Stream near Fennel Rd\CADD Data\CAD\Sheets\2366N22-sh1-Detail.dgn

EFK Moen
Civil Engineering Design

USER NAME = jkratz	DESIGNED -	REVISED -
	DRAWN -	REVISED -
	CHECKED -	REVISED -
PLOT DATE = 11/11/2025	DATE -	REVISED -

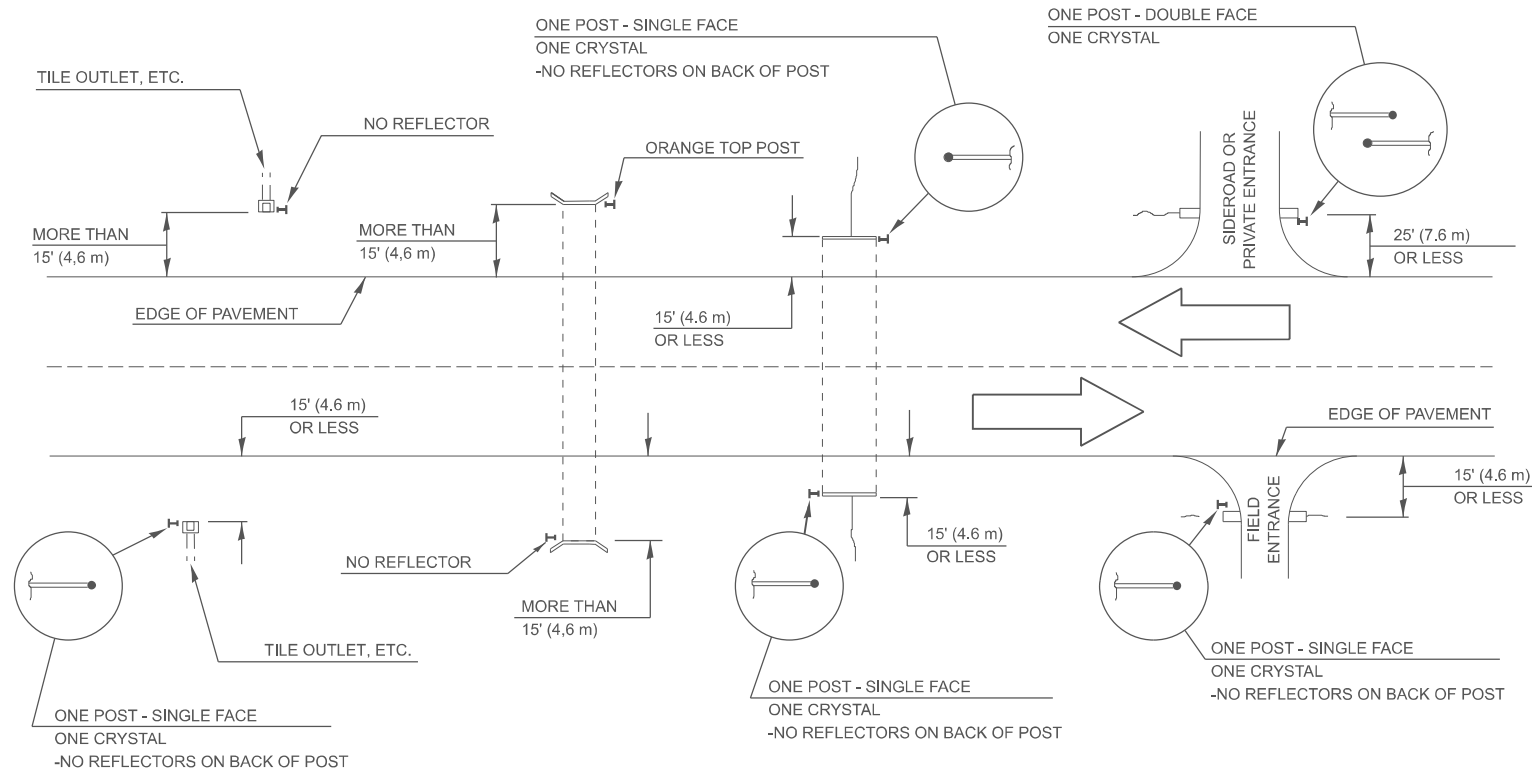
STATE OF ILLINOIS
DEPARTMENT OF TRANSPORTATION

DISTRICT 3 DETAILS
FAP 311 (IL 71) OVER SN 047-2514

SCALE: NONE SHEET 1 OF 2 SHEETS STA. TO STA.

F.A.P. RTE.	SECTION	COUNTY	TOTAL SHEETS	SHEET NO.
311	(3)CR-2514	KENDALL	25	16
CONTRACT NO. 66N22				
ILLINOIS FED. AID PROJECT				

IDENTIFICATION OF ROADSIDE HAZARDS FOR TWO-LANE ROADWAYS



NOTE:

DELINEATORS FOR ROADSIDE HAZARDS SHALL ONLY BE PLACED AT LOCATIONS WHERE THERE IS NO GUARDRAIL, OR OTHER PERMANENT BARRIER, ON THE SAME SIDE OF THE ROAD AS THE HAZZARD.

DELINEATORS FOR ROADSIDE HAZARDS SHALL ONLY BE PLACED AT LOCATIONS WHERE DELINEATORS ARE NOT IN PLACE ALONG THE EDGE OF SHOULDER.

EACH POST SHALL BE CONSIDERED AS ONE DELINEATOR FOR PAYMENT, REGARDLESS OF THE NUMBER OF DELINEATORS ATTACHED TO IT.

FOR ONE-WAY AND INTERSTATE ROADWAYS THE APPLICATION SHALL BE SIMILAR WITH DELINEATORS PLACED ON THE TRAFFIC APPROACH SIDE OF HAZARDS AND OBJECTS, ONLY SINGLE FACE DELINEATORS WILL BE REQUIRED ON ONE-WAY ROADWAYS, CRYSTAL ON THE RIGHT SIDE AND AMBER ON THE LEFT SIDE.

FOR OTHER DELINEATOR APPLICATIONS, REFER TO HIGHWAY STANDARD 635001.

MODEL: C:\projects\03 (Sheet) FILE NAME: 01:2022R3\DOTCAD CONNECT\24006.04 IDOT D3 PTB 208-020 WO 04 IL 71 over Stream near Fennel Rd\CADD Data\CAD Sheets\ID366N22-shh-Detail.dgn

EFK Moen
Civil Engineering Design

USER NAME = jkratz	DESIGNED -	REVISED -
	DRAWN -	REVISED -
	CHECKED -	REVISED -
PLOT DATE = 11/11/2025	DATE -	REVISED -

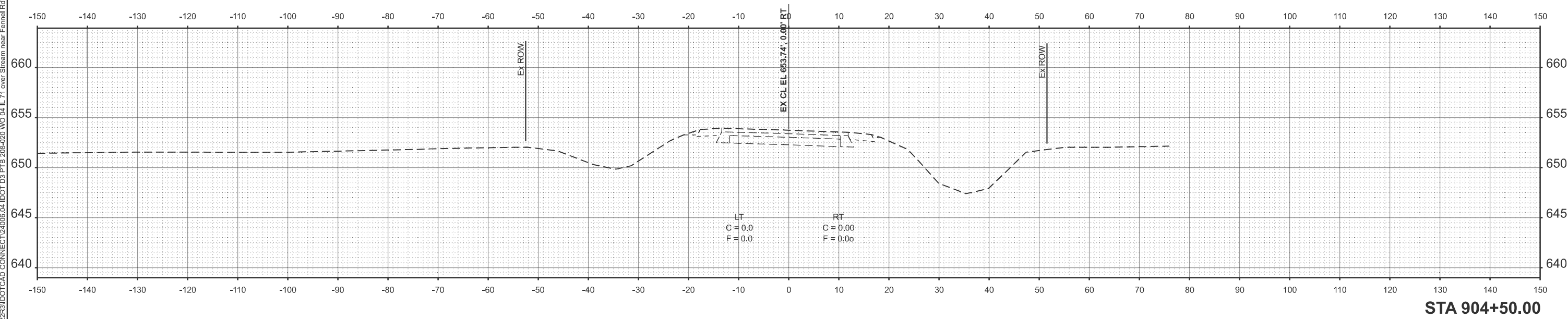
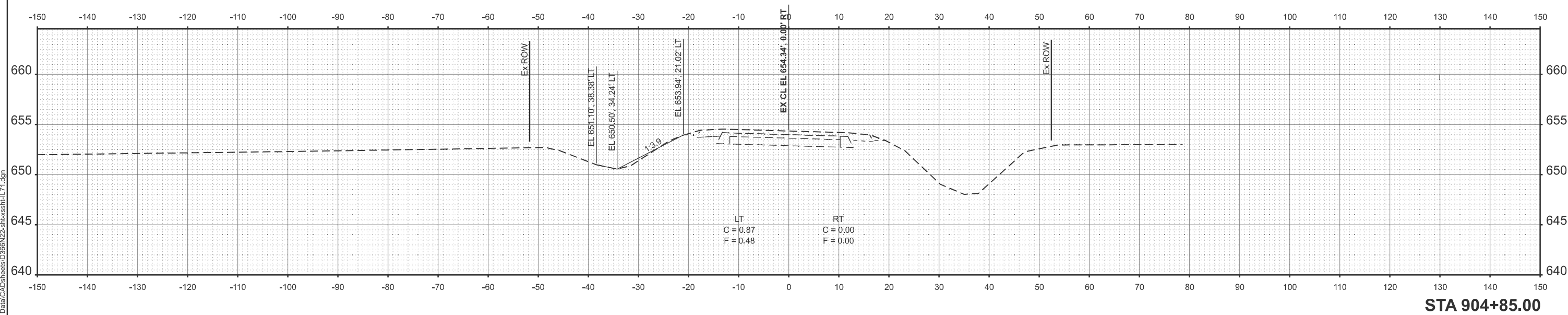
STATE OF ILLINOIS
DEPARTMENT OF TRANSPORTATION

DISTRICT 3 DETAILS
FAP 311 (IL 71) OVER SN 047-2514

SCALE: NONE SHEET 2 OF 2 SHEETS STA. TO STA.

F.A.P. RTE.	SECTION	COUNTY	TOTAL SHEETS	SHEET NO.
311	(3)CR-2514	KENDALL	25	17
CONTRACT NO. 66N22				
ILLINOIS FED. AID PROJECT				

MODEL: XSEC_01
 FILE NAME: O:\2022\23\DOT\CAD\CONNECT\24006_04_IDOT_D3_PTB_208-020_WO_D4_IL_71_Over_Stream_near_Fennel_Rd\CADD_Data\CAD_Sheets\ID366N22-shp-ssht-IL71.dgn



EFK Moen
 Civil Engineering Design

USER NAME = jkratz	DESIGNED - SK	REVISED -
	DRAWN - SJF	REVISED -
	CHECKED - JH	REVISED -
PLOT DATE = 11/11/2025	DATE - 11/12/2025	REVISED -

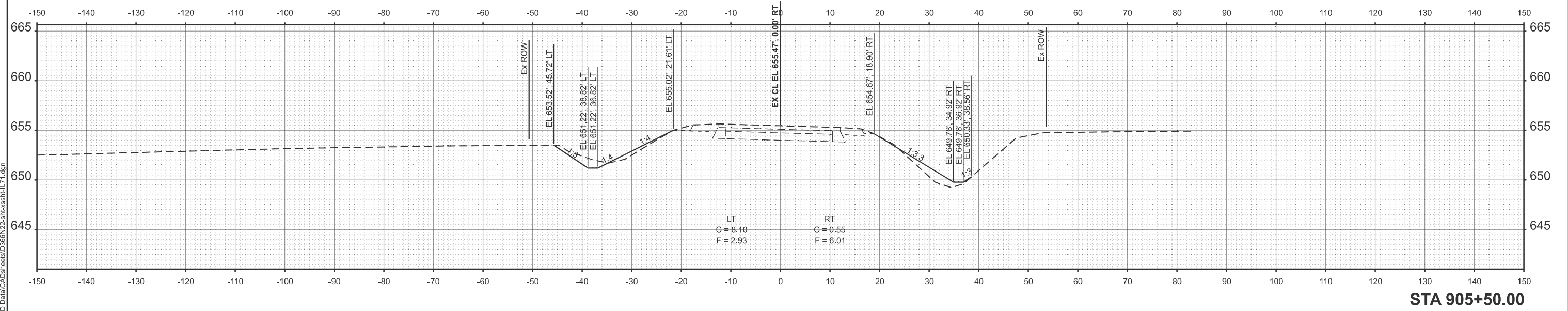
**STATE OF ILLINOIS
 DEPARTMENT OF TRANSPORTATION**

**CROSS SECTIONS
 FAP 311 (IL 71) OVER SN 047-2514**

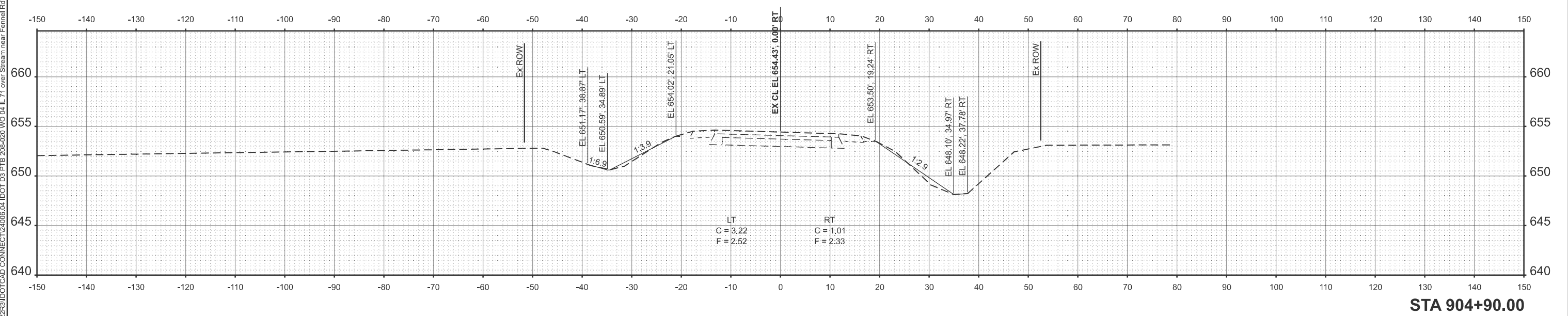
SCALE: 1"=10' SHEET 1 OF 8 SHEETS STA. TO STA.

F.A.P. RTE.	SECTION	COUNTY	TOTAL SHEETS	SHEET NO.
311	(3)CR-2514	KENDALL	25	18
CONTRACT NO. 66N22				
ILLINOIS FED. AID PROJECT				

MODEL: XSEC_02
 FILE NAME: O:\2022\3\DOT\CAD_CONN\CONNECT\24006_04_IDOT_D3_PTB_208-020_WO_04_IL_71_Over_Stream_near_Fennel\Road\CADD_Data\CAD_Sheets\ID366N22-shp-ssht-IL-71.dgn



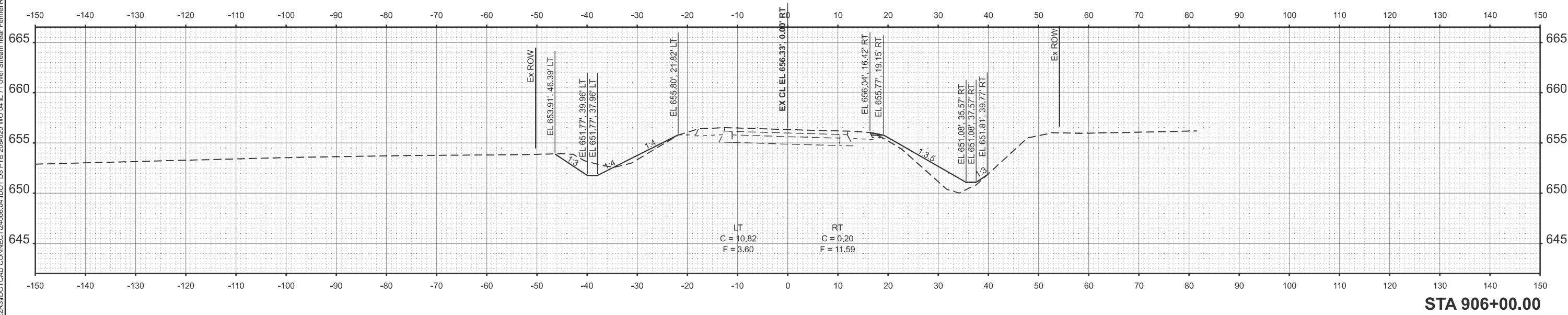
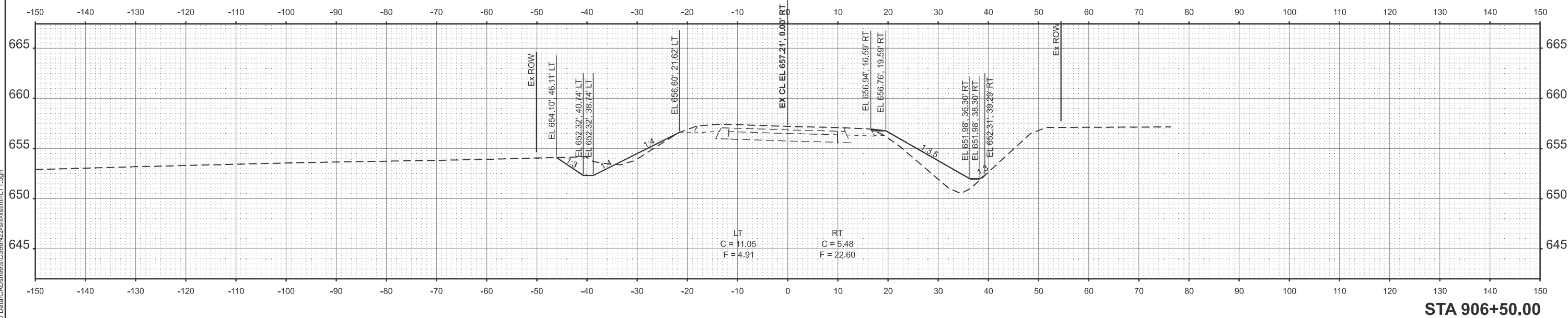
STA 905+50.00



STA 904+90.00

EFK Moen Civil Engineering Design	USER NAME = jkratz	DESIGNED - SK	REVISED -	STATE OF ILLINOIS DEPARTMENT OF TRANSPORTATION	CROSS SECTIONS FAP 311 (IL 71) OVER SN 047-2514			F.A.P. RTE. 311	SECTION (3)CR-2514	COUNTY KENDALL	TOTAL SHEETS 25	SHEET NO. 19
	PLOT DATE = 11/11/2025	CHECKED - JH	REVISED -		SCALE: 1"=10'	SHEET 2	OF 8 SHEETS	STA. TO STA.	CONTRACT NO. 66N22		ILLINOIS FED. AID PROJECT	
	DATE - 11/12/2025	REVISIED -	REVISED -									

MODEL: XSEC_03
 FILE NAME: O:\2022\3\DOTCAD CONNECT\24006_04_IDOT_D3_PTB_208-020_WO_04_IL_71_Over Stream near Fennel Rd\CADD Data\CADSheets\24006N22-shp-sssh-IL_71.dgn



USER NAME = jkratz	DESIGNED - SK	REVISED -
	DRAWN - SJF	REVISED -
	CHECKED - JH	REVISED -
PLOT DATE = 11/11/2025	DATE - 11/12/2025	REVISED -

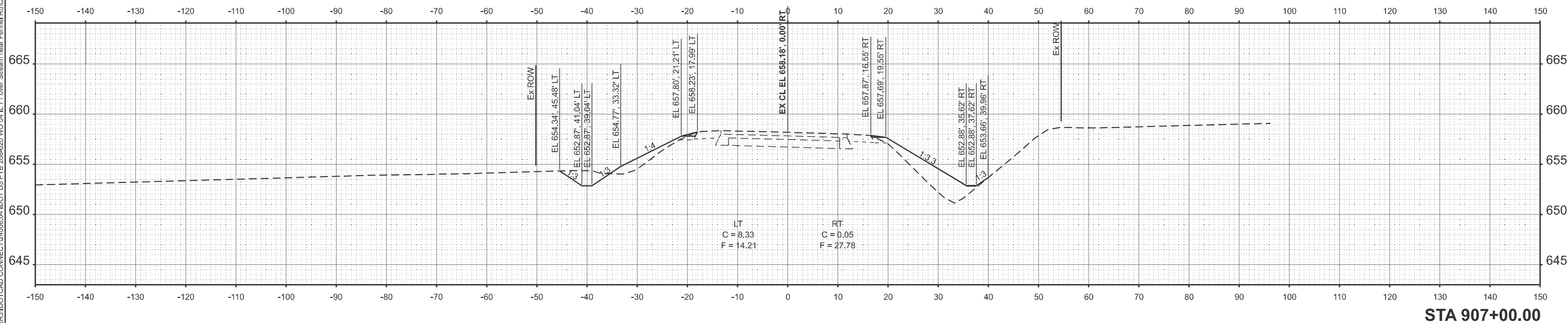
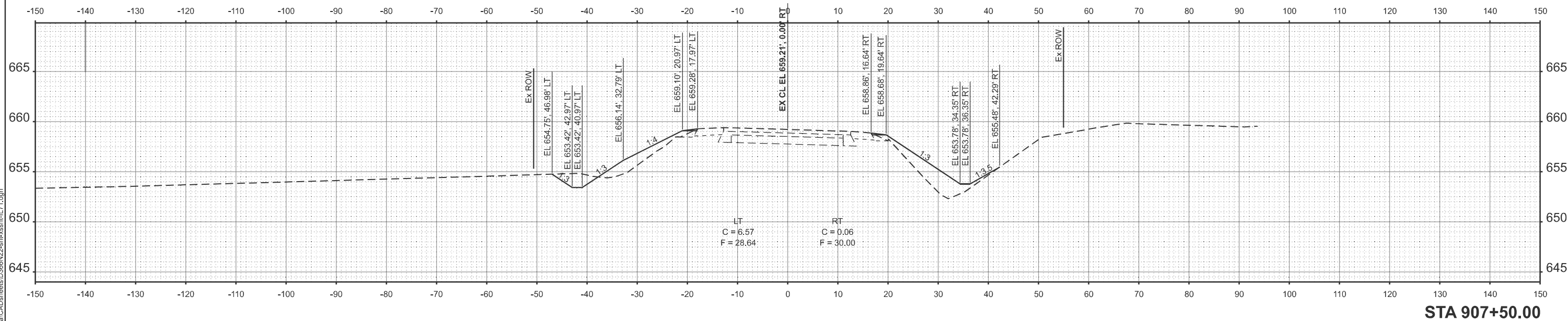
STATE OF ILLINOIS
 DEPARTMENT OF TRANSPORTATION

CROSS SECTIONS
 FAP 311 (IL 71) OVER SN 047-2514

SCALE: 1"=10' SHEET 3 OF 8 SHEETS STA. TO STA.

F.A.P. RTE.	SECTION	COUNTY	TOTAL SHEETS	SHEET NO.
311	(3)CR-2514	KENDALL	25	20
CONTRACT NO. 66N22				
ILLINOIS FED. AID PROJECT				

MODEL: XSEC_04
 FILE NAME: O:\2022\3\DOTCAD CONNECT\24006_04_IDOT_D3_PTB_208-020_WO_04_IL_71_Over Stream near Fennel Rd\CADD Data\CADSheets\66N22-shp-ssht-IL71.dgn



EFK Moen
 Civil Engineering Design

USER NAME = jkratz
 PLOT DATE = 11/11/2025

DESIGNED - SK
 DRAWN - SJF
 CHECKED - JH
 DATE - 11/12/2025

REVISED -
 REVISED -
 REVISED -
 REVISED -

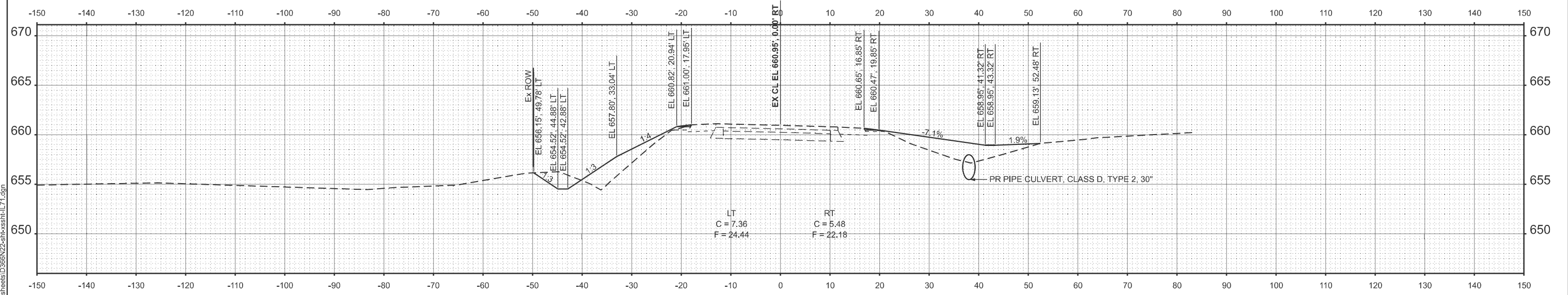
STATE OF ILLINOIS
 DEPARTMENT OF TRANSPORTATION

CROSS SECTIONS
 FAP 311 (IL 71) OVER SN 047-2514

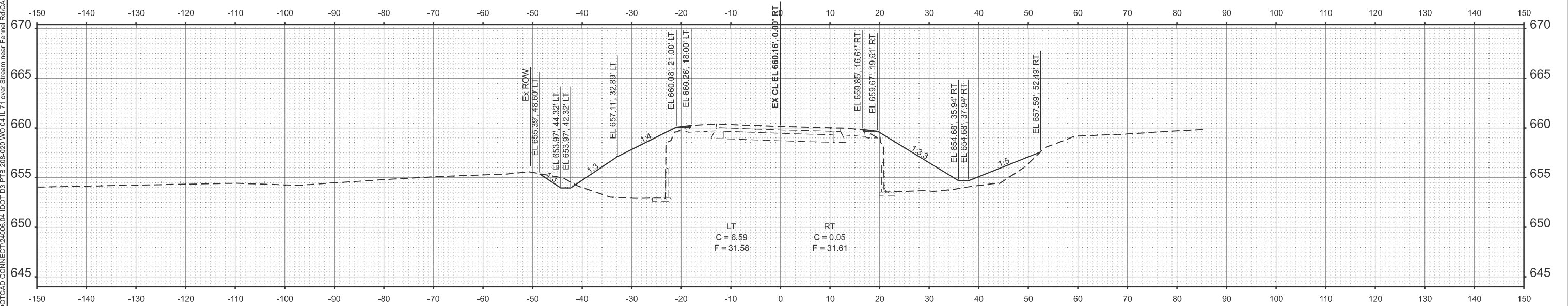
SCALE: 1"=10' SHEET 4 OF 8 SHEETS STA. TO STA.

F.A.P. RTE.	SECTION	COUNTY	TOTAL SHEETS	SHEET NO.
311	(3)CR-2514	KENDALL	25	21
CONTRACT NO. 66N22				
ILLINOIS FED. AID PROJECT				

MODEL: XSEC_05
 FILE NAME: O:\2022\3\DOTCAD\CONNECT\24006_04_IDOT_D3_PT8_208-020_WO_04_IL_71_Over Stream near Fennel Rd\CADD Data\CADSheets\366N22-sh-xsect-IL71.dgn



STA 908+50.00



STA 908+00.00



USER NAME = jkratz	DESIGNED - SK	REVISED -
	DRAWN - SJF	REVISED -
	CHECKED - JH	REVISED -
PLOT DATE = 11/11/2025	DATE - 11/12/2025	REVISED -

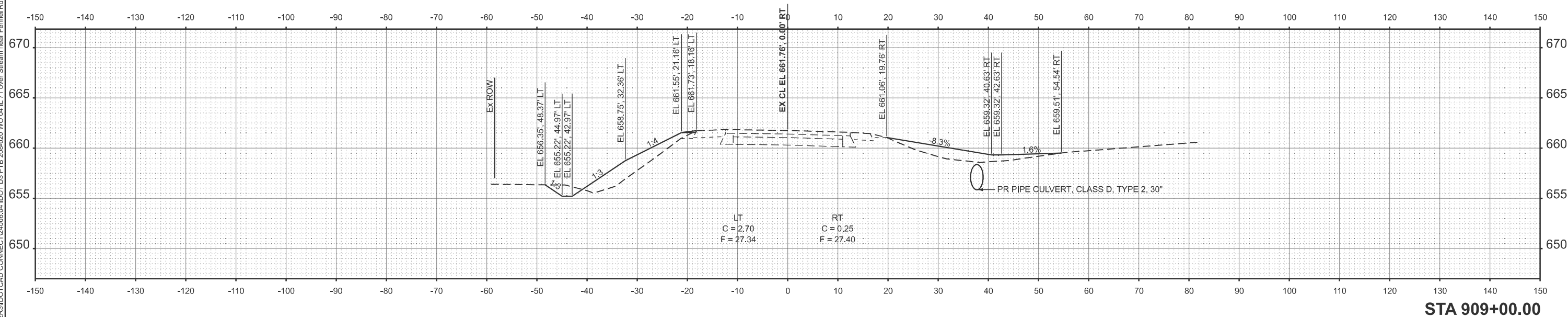
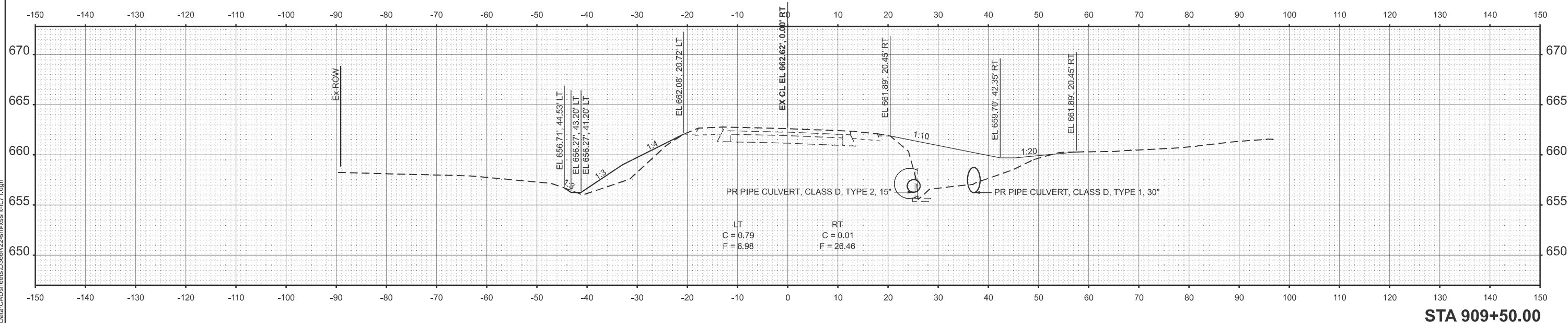
STATE OF ILLINOIS
 DEPARTMENT OF TRANSPORTATION

CROSS SECTIONS
 FAP 311 (IL 71) OVER SN 047-2514

SCALE: 1"=10' SHEET 5 OF 8 SHEETS STA. TO STA.

F.A.P. RTE.	SECTION	COUNTY	TOTAL SHEETS	SHEET NO.
311	(3)CR-2514	KENDALL	25	22
CONTRACT NO. 66N22				
ILLINOIS FED. AID PROJECT				

MODEL: XSEC_06
 FILE NAME: O:\2022\3\DOTCAD CONNECT\24006_04_IDOT_D3_PTB_208-020_WO_04_IL_71_Over Stream near Fennel Rd\CADD Data\CADSheets\ID366N22-shp-ssht-IL71.dgn



EFK Moen
 Civil Engineering Design

USER NAME = jkratz	DESIGNED - SK	REVISED -
	DRAWN - SJF	REVISED -
	CHECKED - JH	REVISED -
PLOT DATE = 11/11/2025	DATE - 11/12/2025	REVISED -

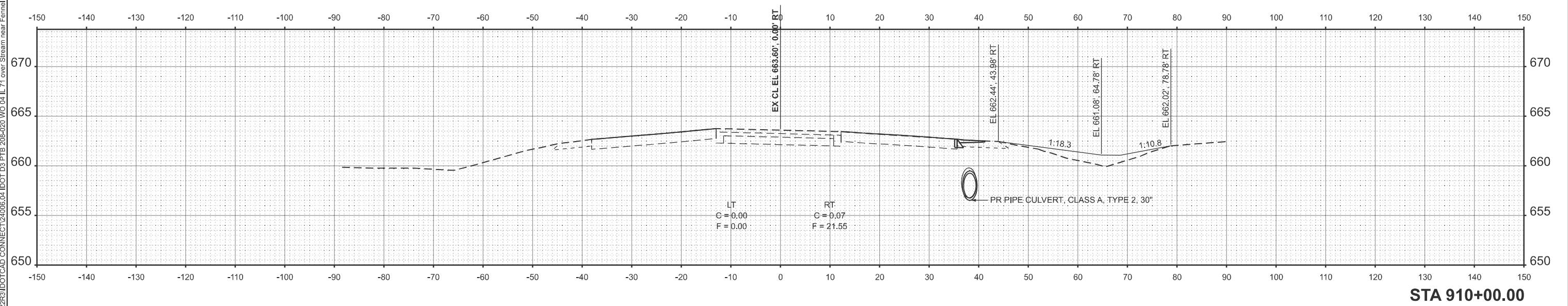
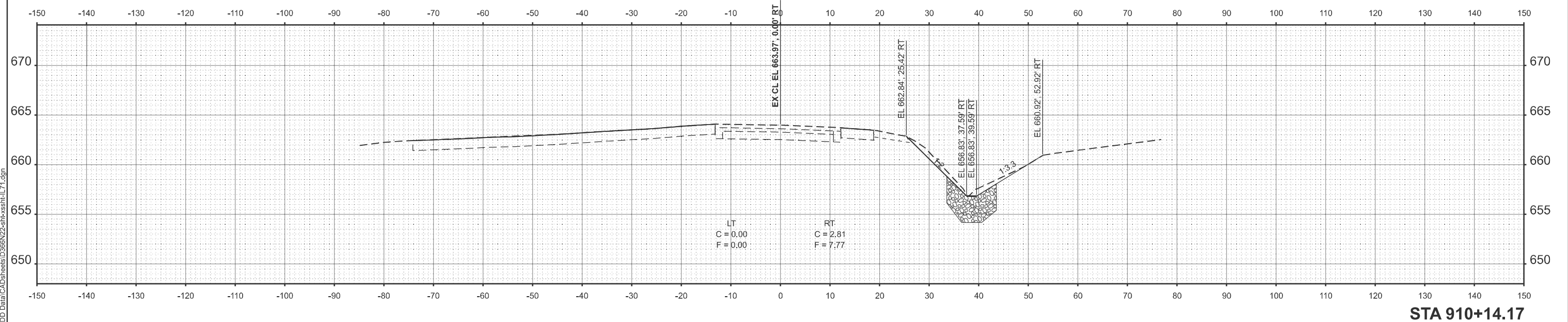
**STATE OF ILLINOIS
 DEPARTMENT OF TRANSPORTATION**

**CROSS SECTIONS
 FAP 311 (IL 71) OVER SN 047-2514**

SCALE: 1"=10' SHEET 6 OF 8 SHEETS STA. TO STA.

F.A.P. RTE.	SECTION	COUNTY	TOTAL SHEETS	SHEET NO.
311	(3)CR-2514	KENDALL	25	23
CONTRACT NO. 66N22				
ILLINOIS FED. AID PROJECT				

MODEL: XSEC_07
 FILE NAME: C:\2022\23\DOT\CAD\CONNECT\24006_04_IDOT_D3_PTB_208-020_WO_04_IL_71_Over_Stream_near_Fennel_Rd\CADD_Data\CAD_Sheets\ID366N22-shr-ssht-IL71.dgn



EFK Moen
 Civil Engineering Design

USER NAME = jkratz	DESIGNED - SK	REVISED -
	DRAWN - SJF	REVISED -
	CHECKED - JH	REVISED -
PLOT DATE = 11/11/2025	DATE - 11/12/2025	REVISED -

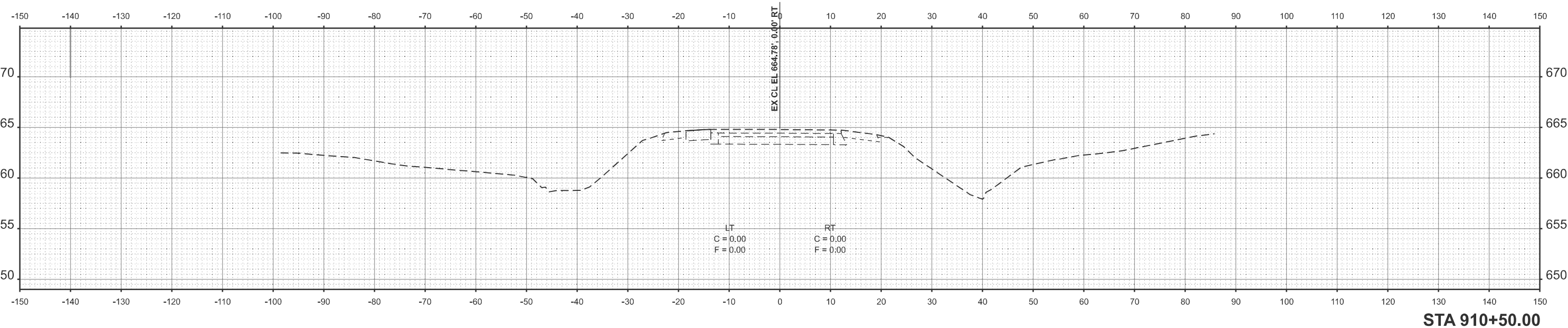
STATE OF ILLINOIS
DEPARTMENT OF TRANSPORTATION

CROSS SECTIONS
FAP 311 (IL 71) OVER SN 047-2514

SCALE: 1"=10'
 SHEET 7 OF 8 SHEETS
 STA. TO STA.

F.A.P. RTE.	SECTION	COUNTY	TOTAL SHEETS	SHEET NO.
311	(3)CR-2514	KENDALL	25	24
CONTRACT NO. 66N22				
ILLINOIS FED. AID PROJECT				

MODEL: XSEC_09
 FILE NAME: O:\2022\23\DOT\CAD\CONNECT\24006_04_IDOT_D3_PTB_208-20\WO_04_IL_71_Over_Stream_near_Fennel_Rd\CADD_Data\CADsheets\ID366N22-shp-ssht-IL71.dgn



EFK Moen
 Civil Engineering Design

USER NAME = jkratz	DESIGNED - SK	REVISED -
	DRAWN - SJF	REVISED -
	CHECKED - JH	REVISED -
PLOT DATE = 11/11/2025	DATE - 11/12/2025	REVISED -

STATE OF ILLINOIS
 DEPARTMENT OF TRANSPORTATION

CROSS SECTIONS
 FAP 311 (IL 71) OVER SN 047-2514

SCALE: 1"=10' SHEET 8 OF 8 SHEETS STA. TO STA.

F.A.P. RTE.	SECTION	COUNTY	TOTAL SHEETS	SHEET NO.
311	(3)CR-2514	KENDALL	25	25
CONTRACT NO. 66N22				
ILLINOIS FED. AID PROJECT				