

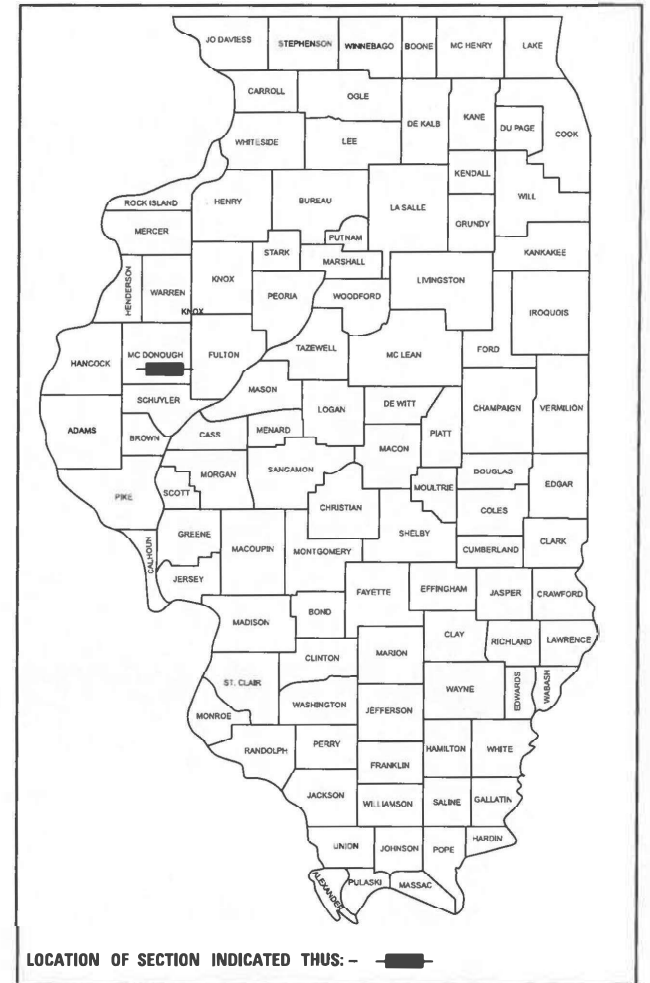
STATE OF ILLINOIS
DEPARTMENT OF TRANSPORTATION

F.A.S. RTE.	SECTION	COUNTY	TOTAL SHEETS	SHEET NO.
407	[(55-2)B,B-1]SLP	MCDONOUGH	6	1
		ILLINOIS	CONTRACT NO. 68K59	

INDEX OF SHEETS

- 1 COVER SHEET
- 2 GENERAL NOTES
- 3 SUMMARY OF QUANTITIES
- 4 SCHEDULE OF QUANTITIES
- 5 EXISTING PLANS
- 6 SLOPEWALL DETAILS SN'S 055-0052, 055-0053

D-94-094-25



PROPOSED
HIGHWAY PLANS

ROUTE FAP 407 (IL 110)
SECTION [(55-2)B,B-1]SLP
CONTRACT MAINTENANCE
SLOPEWALL REHABILITATION
MCDONOUGH COUNTY

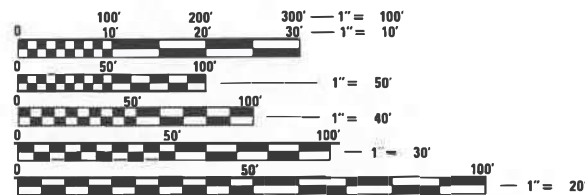
C-94-108-25

HIGHWAY STANDARDS

- 701101-05 OFF-RD OPERATIONS, MULTILANE, 15' (4.5 m) TO 24" (600 m) FROM PAVEMENT TO EDGE
- 701106-02 OFF-RD OPERATIONS, MULTILANE, MORE THAN 15' (4.5 m) AWAY
- 701400-12 APPROACH TO LANE CLOSURE, FREEWAY/EXPRESSWAY
- 701401-13 LANE CLOSURE, FREEWAY/EXPRESSWAY
- 701901-11 TRAFFIC CONTROL DEVICES

DESIGN DESIGNATION
3900(23) OTHER PRINCIPAL ARTERIAL 0.00 (FD-00)

PROJECT LOCATION
SN'S 055-0052 AND 055-0053
IL 336 OVER BNSF RAILROAD

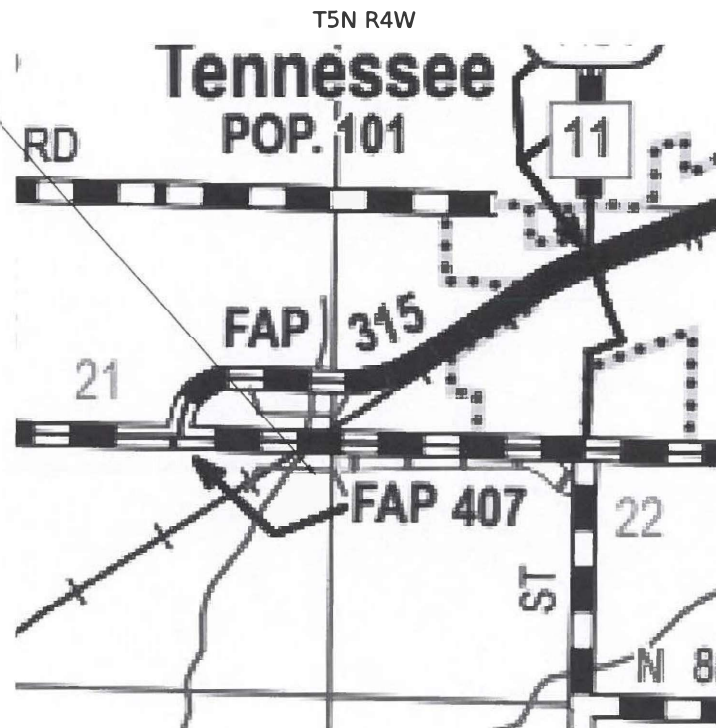


FULL SIZE PLANS HAVE BEEN PREPARED USING STANDARD ENGINEERING SCALES. REDUCED SIZED PLANS WILL NOT CONFORM TO STANDARD SCALES. IN MAKING MEASUREMENTS ON REDUCED PLANS, THE ABOVE SCALES MAY BE USED.

J.U.L.I.E.
JOINT UTILITY LOCATION INFORMATION FOR EXCAVATION
1-800-892-0123
OR 811

PROJECT ENGINEER: BEN TELLEFSON (309) 671-4477
PROJECT MANAGER: MARK ECKHOFF (309) 671-4463

CONTRACT NO. 68K59
CATALOG NO. 036697-00D



GROSS LENGTH OF IMPROVEMENT = 380 FT (0.07 MI)
NET LENGTH OF IMPROVEMENT = 380 FT (0.07 MI)



Christopher Maushard

CHRISTOPHER MAUSHARD, P.E. DATE 12/03/2025
LICENSED PROFESSIONAL ENGINEER
ILLINOIS NO. 062.052483 EXPIRES 11-30-2027

DESCRIPTION OF PROJECT:

THIS PROJECT CONSISTS OF RE-SPRAYING ASPHALT CEMENT ON EXISTING AGGREGATE SLOPEWALLS AT SN'S 055-0052 AND 055-0053, IL 336 OVER BNSF RAILROAD

STATE OF ILLINOIS
DEPARTMENT OF TRANSPORTATION

SUBMITTED December 4 20 25
Kensil A. Barnett inc REGIONAL ENGINEER
January 23 20 26
[Signature] ENGINEER OF DESIGN AND ENVIRONMENT
January 23 20 26
[Signature] 5
DIRECTOR OF HIGHWAYS PROJECT IMPLEMENTATION

PRINTED BY THE AUTHORITY
OF THE STATE OF ILLINOIS

GENERAL NOTES

AVAILABILITY OF ELECTRONIC FILES

MICROSTATION AND OPENROADS FILES OF THIS PROJECT WILL BE MADE AVAILABLE TO THE CONTRACTOR AFTER CONTRACT AWARD. IF THERE IS A CONFLICT BETWEEN THE ELECTRONIC FILES AND THE PRINTED CONTRACT PLANS AND DOCUMENTS, THE PRINTED CONTRACT PLANS AND DOCUMENTS SHALL TAKE PRECEDENCE OVER THE ELECTRONIC FILES. THE CONTRACTOR SHALL ACCEPT ALL RISKS ASSOCIATED WITH USING THE ELECTRONIC FILES AND SHALL HOLD THE DEPARTMENT HARMLESS FROM ANY ERRORS OR OMISSIONS IN THE ELECTRONIC FILES AND THE DATA CONTAINED THEREIN. ERRORS OR DELAYS RESULTING FROM THE USE OF THE ELECTRONIC FILES BY THE CONTRACTOR SHALL NOT RESULT IN AN EXTENSION OF TIME, ANY INTERIM OR FINAL COMPLETION DATE OR SHALL NOT BE CONSIDERED CAUSE FOR ADDITIONAL COMPENSATION. THE CONTRACTOR SHALL NOT USE, SHARE, OR DISTRIBUTE THESE ELECTRONIC FILES EXCEPT FOR THE PURPOSE OF CONSTRUCTING THIS CONTRACT. ANY CLAIMS BY THIRD PARTIES DUE TO USE OR ERRORS SHALL BE THE RESPONSIBILITY OF THE CONTRACTOR. THE CONTRACTOR SHALL INCLUDE A DISCLAIMER WITH THE TRANSFER OF THESE ELECTRONIC FILES TO ANY OTHER PARTIES AND SHALL INCLUDE APPROPRIATE LANGUAGE BINDING THEM TO SIMILAR RESPONSIBILITIES.

701.04.01 ADDITIONAL SUPPLEMENTAL TRAFFIC CONTROL

THE ENGINEER RESERVES THE RIGHT AT ANY TIME TO ADD ADDITIONAL TRAFFIC CONTROL SYSTEMS OR DEVICES AS REQUIRED FOR THE SAFE CONTROL OF TRAFFIC DURING CONSTRUCTION. ALL TERMS OF PAYMENT SHALL BE PER THE STANDARD SPECIFICATIONS SHALL BE FOLLOWED BY THE CONTRACTOR.

THE CONTRACTOR SHALL TAKE ALL NECESSARY MEASURES TO ASSURE THAT NO DEBRIS FALLS ONTO THE RAILROAD BELOW THE STRUCTURE. THE COST OF THIS WORK SHALL BE INCLUDED IN THE ASSOCIATED PAY ITEMS.

THE CONTRACTOR SHALL CONTACT THE DISTRICT FOUR TRAFFIC CONTROL SUPERVISOR AT (309) 671-4488 A MINIMUM OF 21 DAYS IN ADVANCE OF BEGINNING WORK.

COMMITMENTS

COMMITMENTS ARE NOT TO BE ALTERED WITHOUT THE WRITTEN APPROVAL OF ALL PARTIES TO WHICH THE COMMITMENT WAS MADE.

NO COMMITMENTS HAVE BEEN MADE FOR THIS PROJECT.

MODEL: Default
FILE NAME: c:\pwwork\pwwork\main\round\dm5514121\TERRA\PLAN-BORDER.dgn



USER NAME =	DESIGNED - RD	REVISED -
DRAWN - RD	REVISED -	
PLOT SCALE = \$SCALE\$	CHECKED - CEM	REVISED -
PLOT DATE =	DATE - 2025/12/01	REVISED -

STATE OF ILLINOIS
DEPARTMENT OF TRANSPORTATION

GENERAL NOTES
IL 336 SLOPEWALL REHABILITATION

SCALE: SHEET 2 OF 6 SHEETS STA. TO STA.

F.A.P. RTE.	SECTION	COUNTY	TOTAL SHEETS	SHEET NO.
407	[(55-2)B,B-1]SLP	MCDONOUGH	6	2
CONTRACT NO. 68K59				
ILLINOIS FED. AID PROJECT				

Benchmark: Chiseled "□" on top of E. End of South Headwall of Box Culvert 60'± W. of Intersection of TR 850 N. and TR 350 E. El. = 670.33

Existing Structure: None

STATE OF ILLINOIS
DEPARTMENT OF TRANSPORTATION

PROJECT NO.	SECTION	SHEET NO.	TOTAL SHEETS
F.A.P. 315 55-2	McDONOUGH	1025 457	22 SHEETS
CONTRACT NO. 68205			

DESIGN SPECIFICATIONS
2002 AASHTO

SEISMIC DATA

Seismic Performance Category (SPC) = A
Bedrock Acceleration Coefficient (A) = 4.0% g
Site Coefficient (S) = 1.0

LOADING HS20-44

Allow 50#/sq.ft. for future wearing surface.

DESIGN STRESSES

FIELD UNITS

$f'_c = 3,500$ psi
 $f_y = 60,000$ psi (Reinf.)

PRECAST PRESTRESSED UNITS

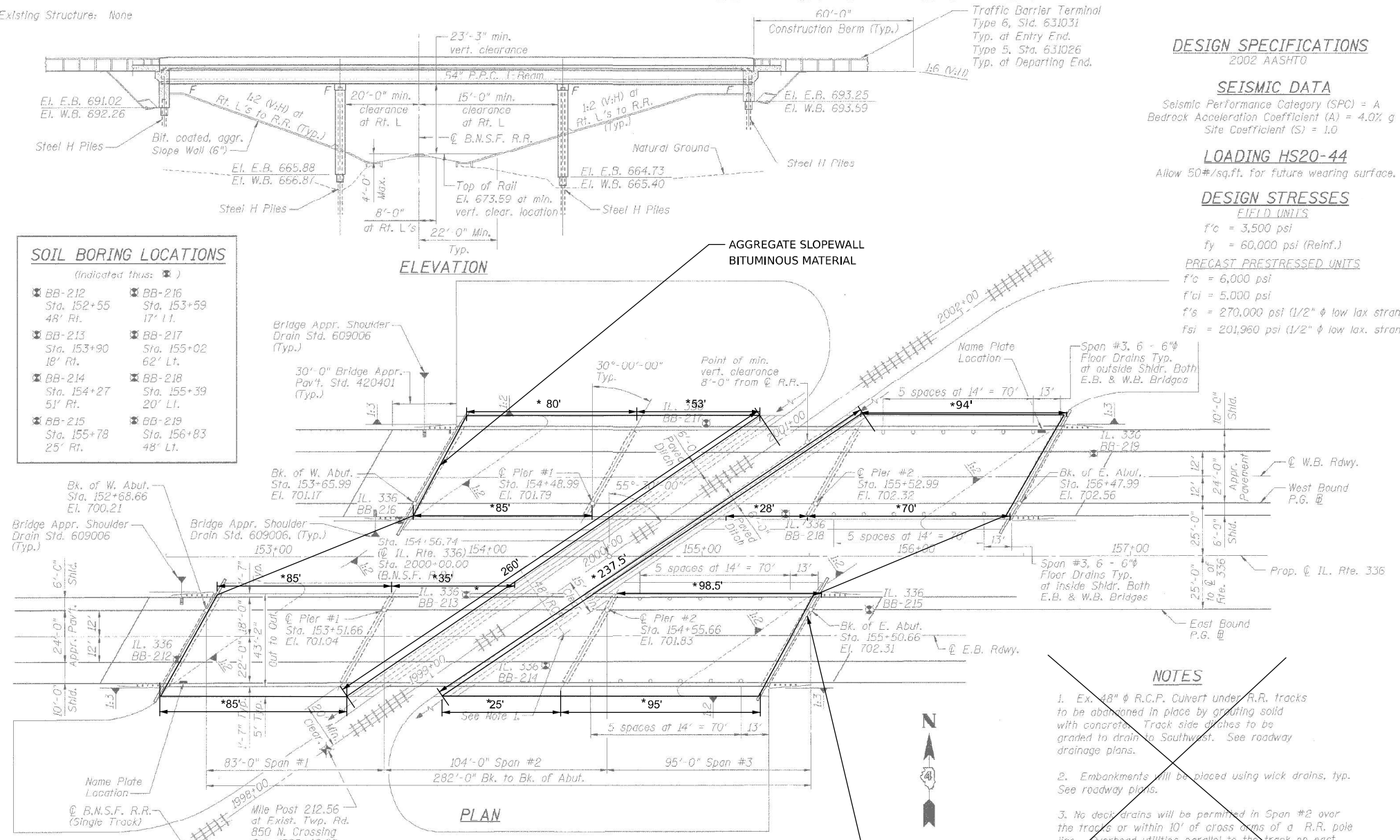
$f'_c = 6,000$ psi
 $f_{ci} = 5,000$ psi
 $f'_s = 270,000$ psi (1/2" ϕ low lax strands)
 $f_{si} = 201,960$ psi (1/2" ϕ low lax strands)

INDEX OF SHEETS

Sheet	Description
1	General Plan & Elevation
2	Total Bill of Material, Slope Protection Details, & Substructure Layout
3-4	East Bound Deck Elevations
5-6	West Bound Deck Elevations
7-8	Deck Details
9	Bridge Pier/Abutment Details
10	Framing Plan and Span #1 Girder Details
11	Span #2 Girder Details
12	Span #3 Girder Details
13-14	Abutment Details
15	Pier Details (EB)
16	Pier Details (WB)
17	Bar Splicer Assembly Details
18-22	Boring Logs

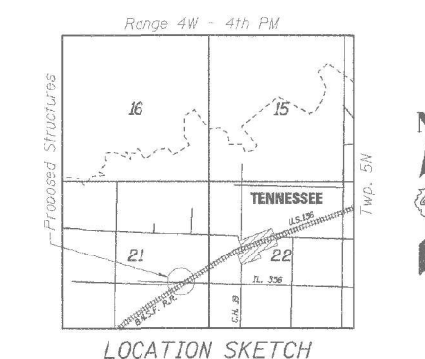
SOIL BORING LOCATIONS
(Indicated thus: BB)

BB-212 Sta. 152+55 48' Rt.	BB-216 Sta. 153+59 17' Lt.
BB-213 Sta. 153+90 18' Rt.	BB-217 Sta. 155+02 62' Lt.
BB-214 Sta. 154+27 51' Rt.	BB-218 Sta. 155+39 20' Lt.
BB-215 Sta. 155+78 25' Rt.	BB-219 Sta. 156+83 48' Lt.



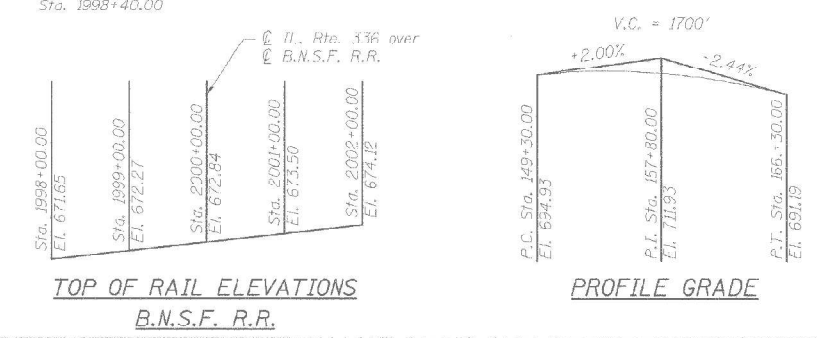
STATION 154+56.74
BUILT 20-- BY
STATE OF ILLINOIS
F.A.P. RTE. 315 SEC. 55-2
LOADING HS20
STR. NO. 055-XXXX

NAME PLATE
See Std. 515001
XXXX = 0052 (EB)
XXXX = 0053 (WB)



- NOTES
- Ex. 48" ϕ R.C.P. Culvert under R.R. tracks to be abandoned in place by grading solid with concrete. Track side ditches to be graded to drain to Southwest. See roadway drainage plans.
 - Embankments will be placed using wick drains, typ. See roadway plans.
 - No deck drains will be permitted in Span #2 over the tracks or within 10' of cross axis of a R.R. pole line. Overhead utilities parallel to the track on east and west sides are to be relocated.

DESIGNED	P.J.L.
CHECKED	LLY
DRAWN	MGM
CHECKED	P.J.L.



APPROVED
FOR STRUCTURAL ADEQUACY ONLY
Philip J. Lane
ENGINEER OF BRIDGES AND STRUCTURES



Philip J. Lane
Philip J. Lane
Illinois Licensed Structural Engineer No. 4084
Lic. Expires: 11/30/06

STS CONSULTANTS
111 NE Jefferson Ave.
Peoria, Illinois 61602
Ph: (309) 678-5444
Fax: (309) 678-5445
IL Design Firm Reg. No. 184-001518

FOR REFERENCE ONLY

MODEL: Default
FILE NAME: c:\pwwork\mmain\mcd\m514121\TERRA\PLAN\BORDER.dgn



USER NAME =	DESIGNED - RD	REVISED -
PLOT SCALE = \$SCALES	DRAWN - RD	REVISED -
PLOT DATE =	CHECKED - CEM	REVISED -
	DATE - 2025/12/01	REVISED -

STATE OF ILLINOIS
DEPARTMENT OF TRANSPORTATION

EXISTING PLANS
IL 336 SLOPEWALL REHABILITATION

SCALE: SHEET 4 OF 6 SHEETS STA. TO STA.

F.A.P. RTE.	SECTION	COUNTY	TOTAL SHEETS	SHEET NO.
407	[(55-2)B,B-1]SLP	MCDONOUGH	6	4
CONTRACT NO. 68K59				
ILLINOIS FED. AID PROJECT				

AGGREGATE SLOPEWALL BITUMINOUS MATERIAL				
LOCATION (QUADRANT)	055-0053 NW	055-0053 NE	055-0052 SE	055-0052 SW
SQYD	741.0	771.0	715.0	708.0
TOTAL				2935

MOBILIZATION		
LOCATION	UNIT	QUANTITY
JOBSITE	L SUM	1
TOTAL		1

TRAFFIC CONTROL AND PROTECTION, STANDARD 701401		
LOCATION	UNIT	QUANTITY
JOBSITE	L SUM	1
TOTAL		1

RAILROAD PROTECTIVE LIABILITY INSURANCE		
LOCATION	UNIT	QUANTITY
JOBSITE	L SUM	1
TOTAL		1

CHANGEABLE MESSAGE SIGN		
LOCATION	UNIT	QUANTITY
JOBSITE	CAL DA	14
TOTAL		14

MODEL: Default
FILE NAME: C:\pwwork\pwwork\main\round\ms514121\TERRA\PLAN-BORDER.dgn



USER NAME =	DESIGNED - RD	REVISED -
	DRAWN - RD	REVISED -
PLOT SCALE = \$\$SCALE\$	CHECKED - CEM	REVISED -
PLOT DATE =	DATE - 2025/12/01	REVISED -

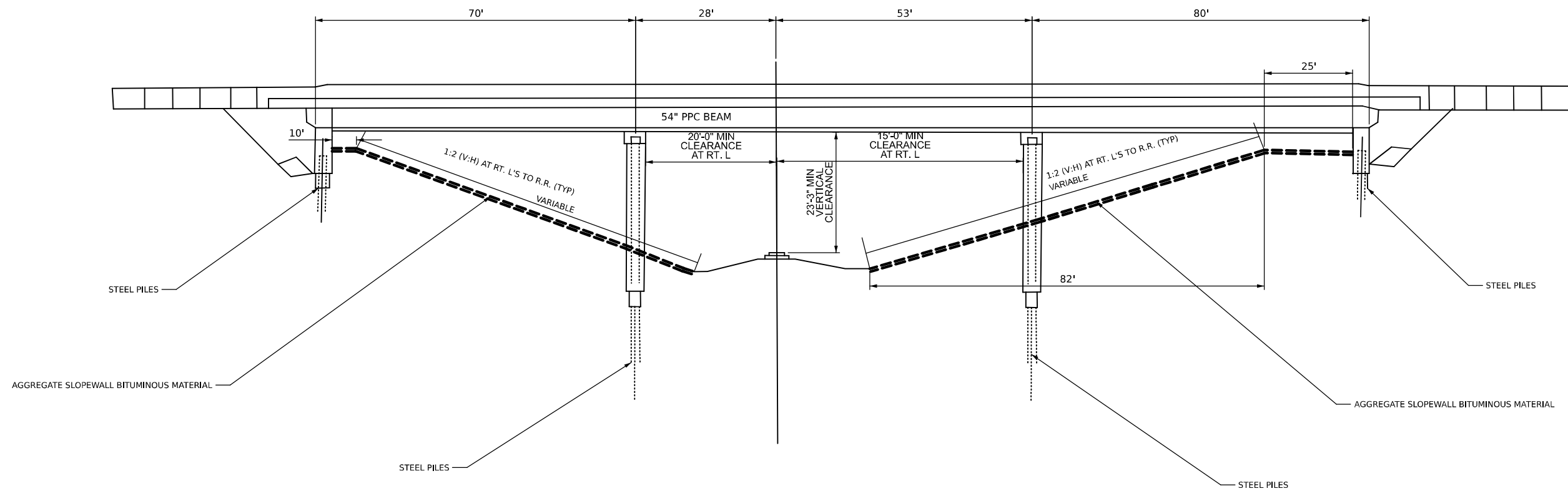
STATE OF ILLINOIS
DEPARTMENT OF TRANSPORTATION

SCHEDULE OF QUANTITIES
IL 336 SLOPEWALL REHABILITATION

SCALE: SHEET 5 OF 6 SHEETS STA. TO STA.

F.A.P. RTE.	SECTION	COUNTY	TOTAL SHEETS	SHEET NO.
407	[(55-2)B,B-1]SLP	MCDONOUGH	6	5
CONTRACT NO. 68K59			ILLINOIS FED. AID PROJECT	

NTS



MODEL: Default
FILE NAME: c:\pwwork\pwwork\main\round\mms514121\TERRA-PLAN-BORDER.dgn



USER NAME =	DESIGNED - RD	REVISED -
DRAWN - RD	REVISED -	
PLOT SCALE = \$SCALE\$	CHECKED - CEM	REVISED -
PLOT DATE =	DATE - 2025/12/01	REVISED -

STATE OF ILLINOIS
DEPARTMENT OF TRANSPORTATION

SLOPEWALL DETAIL SN'S 055-0052, 055-0053
IL 336 SLOPEWALL REHABILITATION

SCALE: SHEET 6 OF 6 SHEETS STA. TO STA.

F.A.P. RTE.	SECTION	COUNTY	TOTAL SHEETS	SHEET NO.
407	[(55-2)B,B-1]SLP	MCDONOUGH	6	6
CONTRACT NO. 68K59				
ILLINOIS FED. AID PROJECT				