

STATE OF ILLINOIS
DEPARTMENT OF TRANSPORTATION

F.A. RTE.	SECTION	COUNTY	TOTAL SHEETS	SHEET NO.
VAR	D7 GUARDRAIL 2026-1	VARIOUS	4	1
		ILLINOIS	CONTRACT NO. 74E30	

FOR INDEX OF SHEETS, SEE SHEET NO. 2

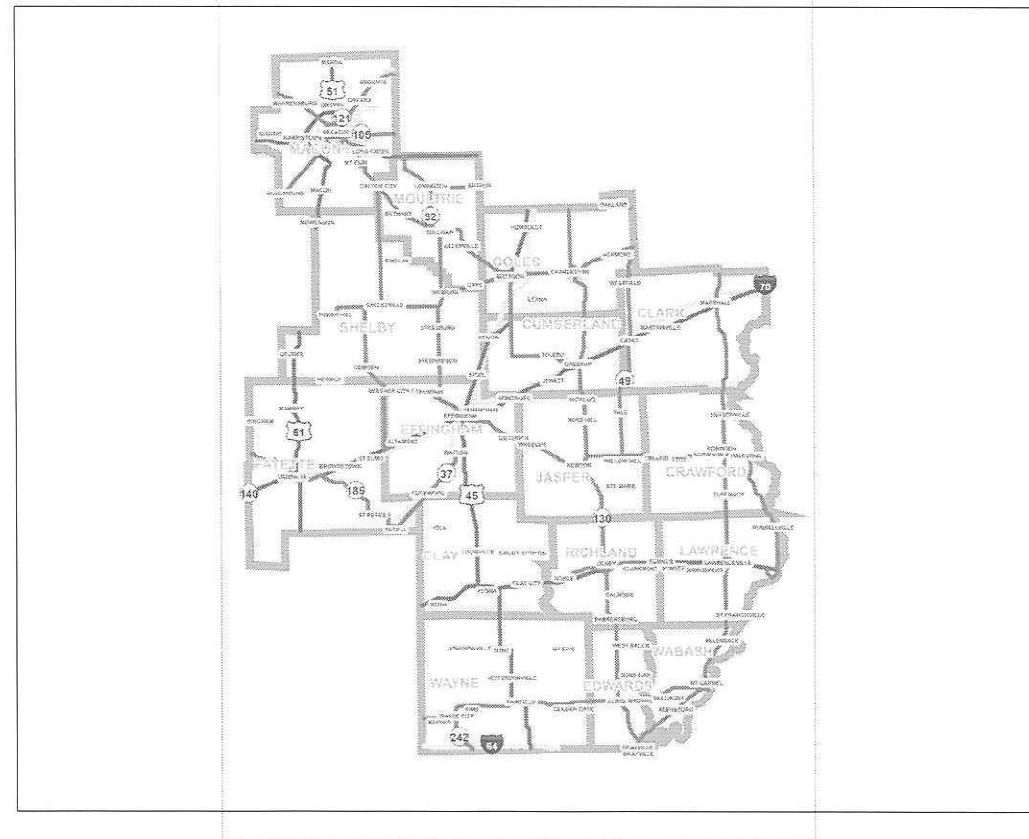
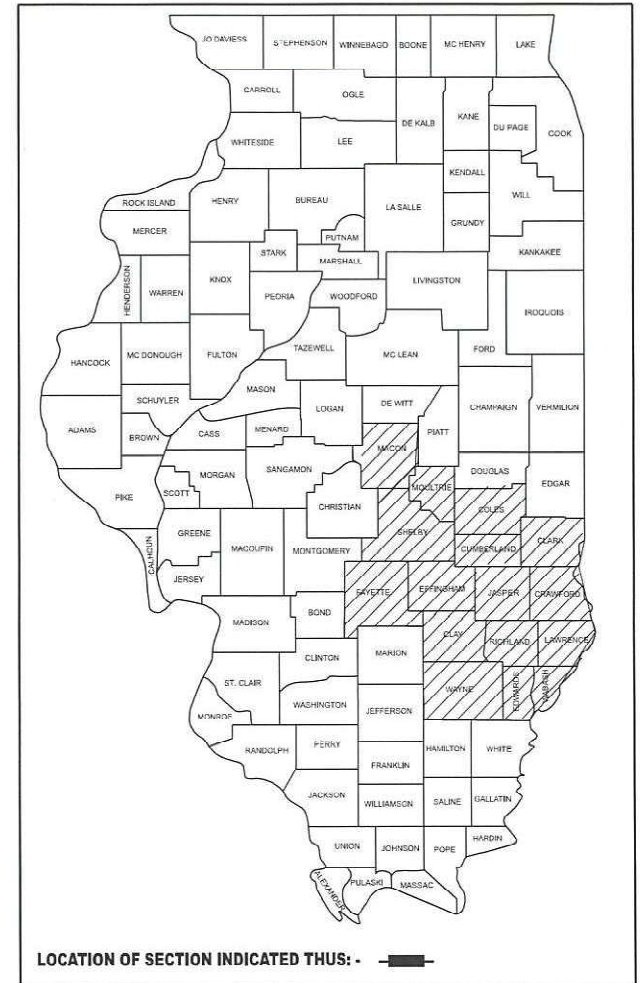
PROPOSED
HIGHWAY PLANS

VARIOUS ROUTES
SECTION D7 GUARDRAIL 2026-1

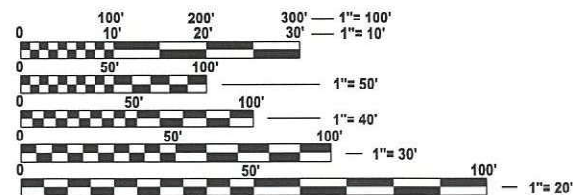
GUARDRAIL REPAIRS
VARIOUS COUNTIES

C-97-052-26

D-97-048-25



GROSS LENGTH = NA FT. = NA MILE
NET LENGTH = NA FT. = NA MILE



FULL SIZE PLANS HAVE BEEN PREPARED USING STANDARD ENGINEERING SCALES. REDUCED SIZED PLANS WILL NOT CONFORM TO STANDARD SCALES. IN MAKING MEASUREMENTS ON REDUCED PLANS, THE ABOVE SCALES MAY BE USED.

J.U.L.I.E.
JOINT UTILITY LOCATION INFORMATION FOR EXCAVATION
1-800-892-0123
OR 811

PROJECT ENGINEER: MATT BOWER
PROJECT MANAGER: STACY ANDERSON

CONTRACT NO. 74E30

STATE OF ILLINOIS
DEPARTMENT OF TRANSPORTATION

SUBMITTED DECEMBER 10 20 25
Teresa C. Priola
REGIONAL ENGINEER

January 23 26
Scott A. [Signature]
ENGINEER OF DESIGN AND ENVIRONMENT

January 23 26
[Signature]
DIRECTOR OF HIGHWAYS PROJECT IMPLEMENTATION

PRINTED BY THE AUTHORITY
OF THE STATE OF ILLINOIS

GENERAL NOTES

THIS PROJECT IS LOCATED ON VARIOUS ROUTES IN SIXTEEN COUNTIES ALL LOCATED WITHIN DISTRICT 7. THE WORK INCLUDED IN THIS SECTION CONSISTS OF VARIOUS TYPES OF GUARDRAIL REPAIR AND ALL OTHER WORK NECESSARY TO COMPLETE THIS SECTION.

THIS PROJECT INCLUDES REPAIRS OF EXISTING DAMAGE AT KNOWN LOCATIONS AND REPAIRS OF FUTURE DAMAGE ON AN ON-CALL BASIS.

REMOVED GUARDRAIL THAT IS NOT REPLACED ON THE SAME DAY SHALL BE DELINEATED WITH LIGHTED BARRICADES. NO LOCATIONS SHALL BE LEFT WITHOUT EITHER LIGHTED BARRICADES OR RESTORED GUARDRAIL AT ANY TIME.

THE LIMITS OF THE DAMAGED GUARDRAIL WILL BE MARKED WITH PAINT. THE REPLACEMENT PARTS AND THE QUANTITIES INDICATED ARE WITHIN THESE LIMITS AS MARKED.

THE CONTRACTOR IS ADVISED THAT THE GUARDRAIL PAY ITEMS INCLUDED IN THE PLANS MAY BE USED TO REPLACE/REPAIR SPBGR AND TRAFFIC BARRIER TERMINALS FOR THE MIDWEST GUARDRAIL SYSTEM AS SHOWN IN THE HIGHWAY STANDARDS AS WELL AS SPBGR AND TRAFFIC BARRIER TERMINALS INSTALLED PRIOR TO JAN. 1, 2007. NO ADDITIONAL COMPENSATION WILL BE ALLOWED FOR UTILIZING THE CURRENT MIDWEST GUARDRAIL SYSTEM STANDARD.

INDEX OF SHEETS

SHEET NO.	ITEM
1	COVER SHEET
2	INDEX OF SHEETS, GENERAL NOTES & LIST OF STANDARDS
3	SUMMARY OF QUANTITIES
4	SAND BARREL DETAILS

HIGHWAY STANDARDS

THE FOLLOWING STANDARDS ARE A PART OF THESE PLANS AND ARE INCLUDED FOLLOWING THE LAST NUMBERED SHEET OF THE PLANS.

STD. NO.	DESCRIPTION
630001-13	STEEL PLATE BEAM GUARDRAIL
631011-10	TRAFFIC BARRIER TERMINAL, TYPE 2
631031-18	TRAFFIC BARRIER TERMINAL, TYPE 6
631033-09	TRAFFIC BARRIER TERMINAL, TYPE 6B
636001-02	CABLE ROAD GUARD SINGLE STRAND
643001-03	SAND MODULE IMPACT ATTENUATORS
665001-02	WOVEN WIRE FENCE
701001-02	OFF-ROAD OPERATIONS, 2L, 2W, MORE THAN 15' AWAY
701006-05	OFF-ROAD OPERATIONS, 2L, 2W, 15' TO 24" FROM PAVEMENT EDGE
701101-05	OFF-ROAD OPERATIONS, MULTILANE, 15' TO 24" FROM PAVEMENT EDGE
701106-02	OFF-ROAD OPERATIONS, MULTILANE, MORE THAN 15' AWAY
701201-05	LANE CLOSURE, 2L, 2W, DAY ONLY, FOR SPEEDS >= 45 MPH
701301-04	LANE CLOSURE, 2L, 2W, SHORT TIME OPERATIONS
701426-09	LANE CLOSURE, FREEWAY/EXPRESSWAY, DAY OPERATIONS ONLY
701501-06	URBAN LANE CLOSURE, 2L, 2W, UNDIVIDED
701601-09	URBAN LANE CLOSURE, MULTILANE, 1W OR 2W, WITH NONTRAVERSABLE MEDIAN
701901-11	TRAFFIC CONTROL DEVICES
725001-01	OBJECT AND TERMINAL MARKERS
782006-01	GUARDRAIL AND BARRIER WALL REFLECTOR MOUNTING DETAILS

REV - MS

MODEL: GENNOTE (Sheet)
FILE NAME: c:\pw\work\paw\dot\hillel\p1175641\074E30-shi-gennote.dgn

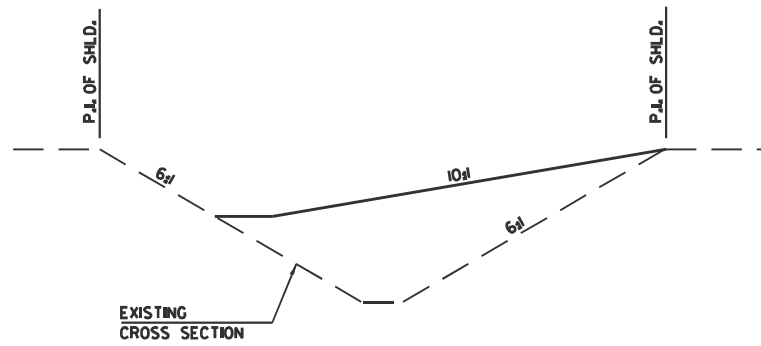
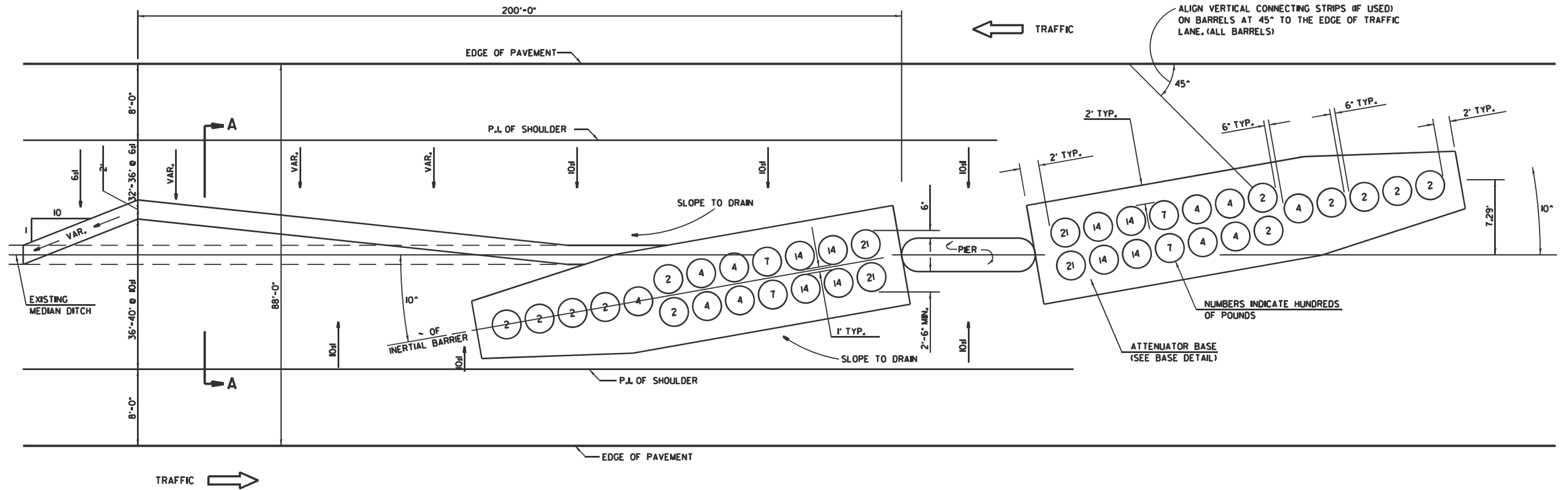
USER NAME = stacy.anderson	DESIGNED -	REVISED -
	DRAWN -	REVISED -
	CHECKED -	REVISED -
PLOT DATE = 11/20/2025	DATE -	REVISED -

**STATE OF ILLINOIS
DEPARTMENT OF TRANSPORTATION**

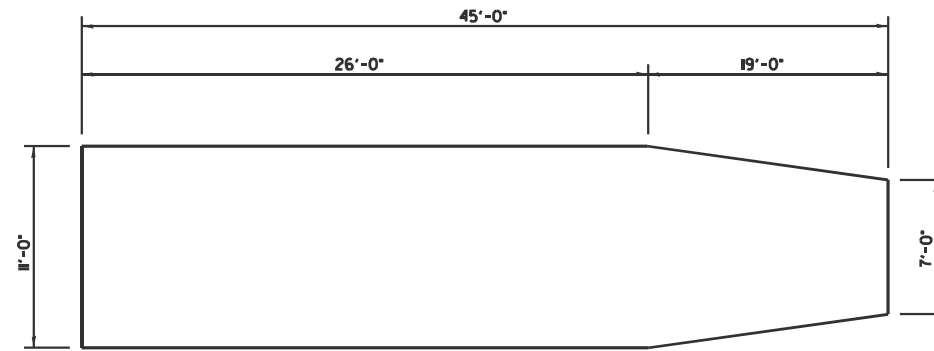
**INDEX OF SHEETS,
GENERAL NOTES AND STANDARDS**

SCALE: SHEET 1 OF 1 SHEETS STA. TO STA.

F.A.P. RTE.	SECTION	COUNTY	TOTAL SHEETS	SHEET NO.
VAR	D7 GUARDRAIL 2026-1	VARIOUS	4	2
			CONTRACT NO. 74E30	
ILLINOIS FED. AID PROJECT				



**SECTION A-A
GRADING AND SHAPING DETAIL**



BASE DETAIL

GENERAL NOTES

1. ALL 10:1 SLOPES SHOWN ON THIS DETAIL SHALL BE CONSTRUCTED 10:1 OR FLATTER.
2. THE SLOPES AS SHOWN ON THIS DETAIL SHALL APPLY TO BOTH ENDS OF THE BRIDGE PIERS.
3. THE LENGTH X WIDTH OF MODULE LAYOUT IS 41.0' x 7.0'; 19 MODULES - 14,400 LBS.
4. IN AREAS OF 10:1 SLOPES PRECEDING THE ATTENUATOR IN THE MEDIAN INSTALLATION, FOUR OR MORE WOOD POSTS SHALL BE PLACED AT 5' INTERVALS IN THE MEDIAN -. SEE SPECIAL PROVISIONS AND SCHEDULES.

NOTE:
This sheet applies ONLY when making partial repair of an existing sand barrel array that was installed according to this drawing. Use Standard 643001 for a complete replacement.

NOT TO SCALE
Note: All dimensions are in INCHES (millimeters) unless otherwise shown.

MODEL: DETAIL (Sheet)
FILE NAME: c:\p\work\wisconsin\hillebrand\175641\074E30-shd-details.dgn

USER NAME = stacy.anderson	DESIGNED -	REVISED -
	DRAWN -	REVISED -
	CHECKED -	REVISED -
PLOT DATE = 11/20/2025	DATE -	REVISED -

**STATE OF ILLINOIS
DEPARTMENT OF TRANSPORTATION**

**EXISTING SAND BARREL
DETAIL**

SCALE: SHEET 1 OF 1 SHEETS STA. TO STA.

F.A. RTE.	SECTION	COUNTY	TOTAL SHEETS	SHEET NO.
VAR	D7 GUARDRAIL 2026-1	VARIOUS	4	4
CONTRACT NO. 74E30			ILLINOIS FED. AID PROJECT	