

FOR INDEX OF SHEETS, SEE SHEET NO. 2

STATE OF ILLINOIS
DEPARTMENT OF TRANSPORTATION

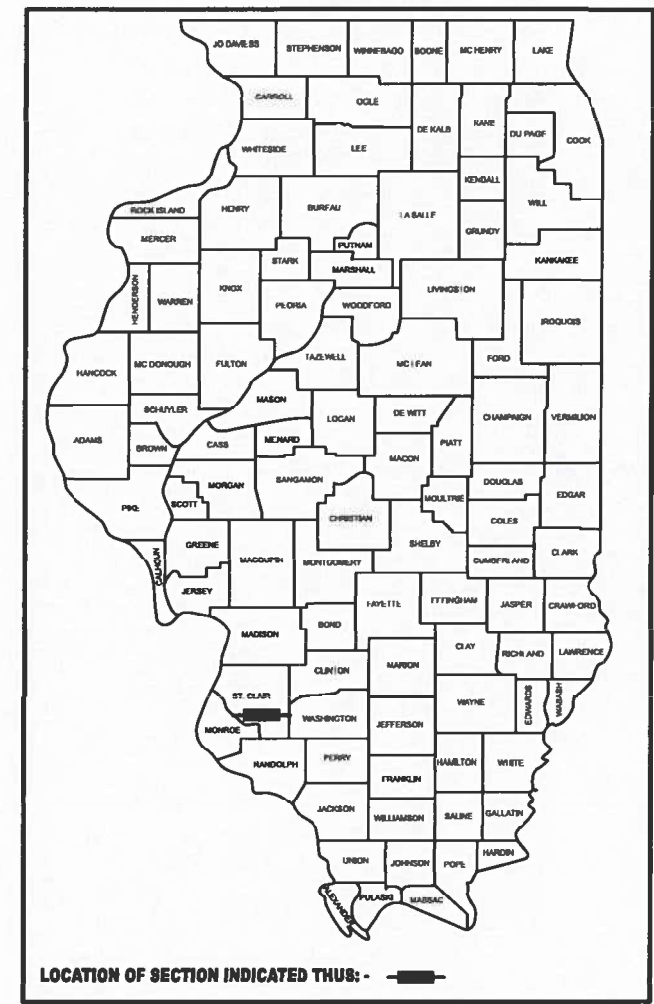
F.A.U. RTE.	SECTION	COUNTY	TOTAL SHEETS	SHEET NO.
9377	12, RS-5	ST. CLAIR	9	1
		ILLINOIS	CONTRACT NO. 76V02	

PROPOSED HIGHWAY PLANS

FAU ROUTE 9377 (IL 177)
SECTION 12, RS-5
SMART OVERLAY
ST. CLAIR COUNTY

C-98-064-26

D-98-022-26

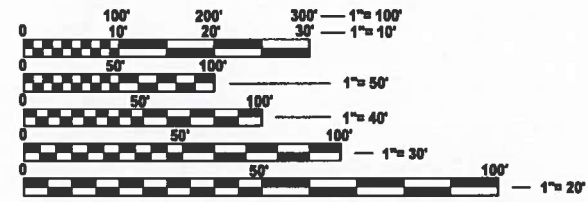
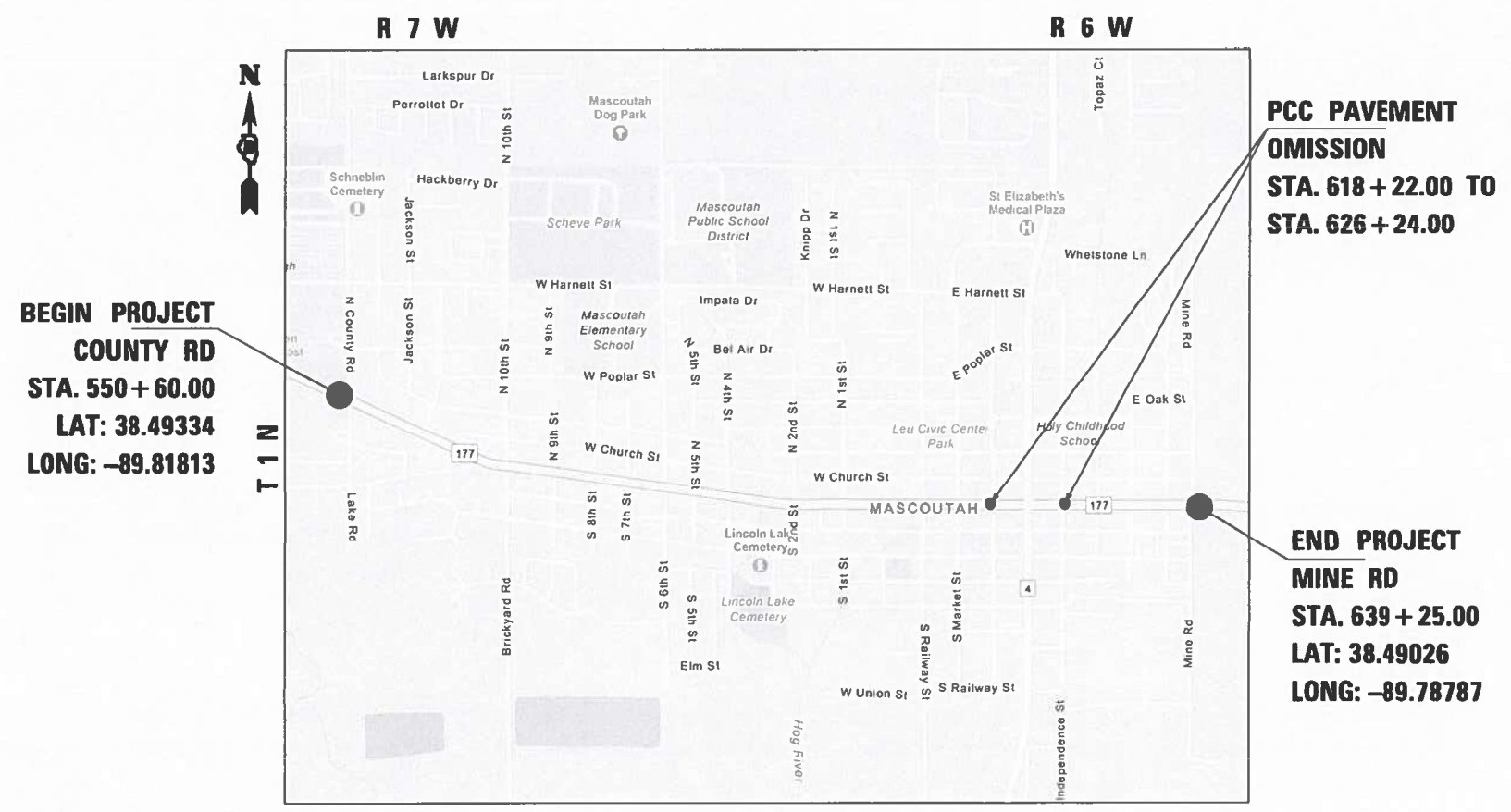


TRAFFIC DATA
COUNTY RD TO 6TH STREET
2025 ADT = 6600 (ACTUAL)
2026 ADT = 6700 (ESTIMATED)
2046 ADT = 7800 (ESTIMATED)
S.U. = 3.4% M.U. = 2.0%

6TH STREET TO RAILWAY ST.
2025 ADT = 5100 (ACTUAL)
2026 ADT = 5100 (ESTIMATED)
2046 ADT = 6000 (ESTIMATED)
S.U. = 2.2% M.U. = 1.2%

RAILWAY ST. TO JEFFERSON ST.
2025 ADT = 4100 (ACTUAL)
2026 ADT = 4100 (ESTIMATED)
2046 ADT = 4800 (ESTIMATED)
S.U. = 2.9% M.U. = 0.8%

JEFFERSON ST. TO MINE RD.
2025 ADT = 3200 (ACTUAL)
2026 ADT = 3200 (ESTIMATED)
2046 ADT = 3800 (ESTIMATED)
S.U. = 3.1% M.U. = 1.9%



FULL SIZE PLANS HAVE BEEN PREPARED USING STANDARD ENGINEERING SCALES. REDUCED SIZED PLANS WILL NOT CONFORM TO STANDARD SCALES. IN MAKING MEASUREMENTS ON REDUCED PLANS, THE ABOVE SCALES MAY BE USED.

J.U.L.I.E.
JOINT UTILITY LOCATION INFORMATION FOR EXCAVATION
1-800-892-0123
OR 811

PROJECT ENGINEER: CHERYL KEPLAR
PROJECT MANAGER: BRANDON HUMPHREYS

CONTRACT NO. 76V02

GROSS LENGTH = 8865 FT. = 1.68 MILE
NET LENGTH = 8063 FT. = 1.53 MILE

FUNCTIONAL CLASSIFICATION
MINOR ARTERIAL

STATE OF ILLINOIS
DEPARTMENT OF TRANSPORTATION

SUBMITTED *Dec 3 20 25*
[Signature]
REGIONAL ENGINEER

January 23 20 26
[Signature]
ENGINEER OF DESIGN AND ENVIRONMENT

January 23 20 26
[Signature]
DIRECTOR OF HIGHWAYS PROJECT IMPLEMENTATION

PRINTED BY THE AUTHORITY
OF THE STATE OF ILLINOIS

INDEX OF SHEETS

1	COVER SHEET
2	INDEX OF SHEETS, HIGHWAY STANDARDS, GENERAL NOTES, MIXTURE REQUIREMENT AND COMMITMENTS
3-4	SUMMARY OF QUANTITIES
5-6	TYPICAL SECTIONS
7-8	SCHEDULE OF QUANTITIES
9	LOCATION MAP

HIGHWAY STANDARDS

000001-09	STANDARD SYMBOLS, ABBREVIATION AND PATTERNS
001006	DECIMAL OF AN INCH AND OF A FOOT
420001-11	PAVEMENT JOINTS
442201-04	CLASS C AND D PATCHES
701311-03	LANE CLOSURE, 2L, 2W, MOVING OPERATIONS - DAY ONLY
701501-06	URBAN LANE CLOSURE, 2L, 2W, UNDIVIDED
701701-10	URBAN LANE CLOSURE, MULTILANE INTERSECTION
701901-11	TRAFFIC CONTROL DEVICES
780001-05	TYPICAL PAVEMENT MARKINGS
781001-04	TYPICAL APPLICATIONS RAISED REFLECTIVE PAVEMENT MARKERS

GENERAL NOTES

- UTILITIES KNOWN TO HAVE FACILITIES WITHIN THE PROJECT AREA:

AMEREN ILLINOIS
 CHARTER COMMUNICATIONS, INC.
 CLEARWAVE FIBER LLC
 FRONTIER COMMUNICATIONS
 CITY OF MASCOUTAH
 MASCOUTAH COMMUNITY UNIT SCHOOL DISTRICT #19
 SLM WATER COMMISSION

- NO SURVEY WAS PERFORMED FOR THIS PROJECT AND THE PLANS WERE CREATED USING MICROFILM AND FIELD MEASUREMENTS.
- THE PROPOSED PAVEMENT MARKING SHALL MATCH THE LOCATIONS OF THE EXISTING PAVEMENT MARKING, AS DIRECTED BY THE ENGINEER.
- THE RESIDENT ENGINEER SHALL VERIFY THE EXISTENCE OF HIGHWAY LIGHTING, INTELLIGENT TRANSPORTATION SYSTEMS (I.T.S.) UTILITIES, AND/OR ELECTRICAL CABLES ASSOCIATED WITH TRAFFIC SIGNALS WITHIN THE PROJECT LIMITS. IF ANY OF THESE EXIST WITHIN THE PROJECT LIMITS, AND IF THESE ITEMS REQUIRE LOCATING, THE CONTRACTOR SHALL BE DIRECTED TO DO SO ACCORDING TO SECTION 803 OF THE STANDARD SPECIFICATIONS. THIS WORK SHALL BE PAID FOR ACCORDING TO ARTICLE 109.04 OF THE STANDARD SPECIFICATIONS.
- FOUR CHANGEABLE MESSAGE SIGNS SHALL BE REQUIRED FOR THIS PROJECT. THEY SHALL BE PLACED TWO WEEKS PRIOR TO ANY LANE CLOSURE AND SHALL REMAIN UP FOR THE DURATION OF THE PROJECT. THE CHANGEABLE MESSAGE SIGNS SHALL BE PLACED ALONG IL 177 AND IL 4 OR AT THE DIRECTION OF THE ENGINEER.
- THE CONTRACTOR SHALL PROVIDE POSITIVE AND ADEQUATE DRAINAGE AT ALL TIMES.
- THE DEPARTMENT STRONGLY ENCOURAGES THE PRIME CONTRACTOR AND THEIR APPROVED SUB-CONTRACTORS TO HIRE MINORITY, WOMEN AND DISADVANTAGED INDIVIDUALS FROM ITS FEDERALLY FUNDED HIGHWAY CONSTRUCTION CAREERS TRAINING PROGRAM (HCCTP) TO HELP MEET WORKFORCE AND TRAINEE GOALS. THIS PROGRAM IS TRAINING MINORITIES, WOMEN AND DISADVANTAGED INDIVIDUALS IN HIGHWAY CONSTRUCTION-RELATED SKILLS, E.G., MATH FOR THE TRADES, JOB READINESS, TECHNICAL SKILLS COURSEWORK (CARPENTRY, CONCRETE FLATWORK, BLUEPRINT READING, SITE PLANS, SITE WORK, TOOLS USE, ETC.) AND OSHA 10 HOUR CERTIFICATION, TO PREPARE THEM FOR A CAREER IN THE HIGHWAY CONSTRUCTION TRADES. GRADUATES ARE WELL-TRAINED AND READY TO BECOME PRODUCTIVE ENTRY-LEVEL CONSTRUCTION WORKERS. CONTACT THE DISTRICT 8 EEO OFFICE AT 618-346-3360 AND/OR THE HCCTP COORDINATOR AT 618-874-6528 TO LEARN MORE ABOUT THE PROGRAM AND FOR ASSISTANCE IN MEETING WORKFORCE AND TRAINEE GOALS.
- ONLY SHORT TERM PAVEMENT MARKING REMOVAL FROM THE FINAL SURFACE SHALL BE PAID FOR AS "SHORT TERM PAVEMENT MARKING REMOVAL."
- THE TEMPORARY RAMP USED ON ALL SIDE STREETS AND ENTRANCES SHALL BE 3 FEET IN LENGTH SO AS NOT TO INTERFERE WITH THE THRU TRAFFIC LANES.
- THE CONTRACTOR SHALL BE AWARE THAT THERE ARE MANHOLES & VALVES LOCATED WITHIN THE RESURFACING LIMITS. CARE SHALL BE TAKEN IN THESE LOCATIONS DURING MILLING OPERATIONS.
- BASED ON STRUCTURAL ANALYSIS CONDUCTED BY IDOT, THE FOLLOWING STRUCTURES CAN BE CROSSED WITH AN EMPTY MTD WITH THE FOLLOWING MAXIMUM GROSS WEIGHT RESTRICTION:
 - 082-2427 (40 TONS)
 - 082-2575 (40 TONS)
 - 082-2428 (40 TONS)

IF THE SAME MTD IS USED THROUGHOUT THE ENTIRE CONTRACT, THEN IT MUST BE LIMITED TO AN EMPTY GROSS WEIGHT \leq 40 TONS

COMMITMENTS

NONE

MIXTURE REQUIREMENTS

MIXTURE USE	SURFACE
AC/PG	PG 64-22
DESIGN AIR VOIDS	4.0% @ Ndes=70
MIX COMPOSITION (GRADATION)	IL 9.5
FRICTION AGG	MIXTURE "D"
QUALITY MGMT PROGRAM	QCP
MatTranDev Required?	YES

REV - MS

MODEL: Gen Notes-1 [Sheet]
 FILE NAME: c:\pwworking\illinois.gov\edison.zohforny\1735598\0876V02-ahf-gennote.dgn

USER NAME = edison.zohforny	DESIGNED -	REVISED -
	DRAWN -	REVISED -
	CHECKED -	REVISED -
PLOT DATE = 12/3/2025	DATE -	REVISED -

STATE OF ILLINOIS
 DEPARTMENT OF TRANSPORTATION

INDEX OF SHEETS, HIGHWAY STANDARDS,
 GENERAL NOTES, COMMITMENTS AND MIXTURE REQUIREMENT

SCALE: SHEET 1 OF 1 SHEETS STA. TO STA.

F.A.U. RTE.	SECTION	COUNTY	TOTAL SHEETS	SHEET NO.
9377	1Z, RS-5	ST. CLAIR	9	2
CONTRACT NO. 78V02				
ILLINOIS FED. AID PROJECT				

MODEL: SQO-1 [Sheet]
 FILE NAME: c:\p\work\paw\illinois.gov\edison.zohfonyi@illinois.gov\d1173598D76V02.sht-SQO.dgn

CODE NO.	ITEM	UNIT	TOTAL QUANTITY	CONSTR. CODE	
				100% STATE ROADWAY	0005 URBAN
40600290	BITUMINOUS MATERIALS (TACK COAT)	POUND	10184	10184	
40600370	LONGITUDINAL JOINT SEALANT	FOOT	8063	8063	
40600405	MATERIAL TRANSFER DEVICE	TON	1901	1901	
40600990	TEMPORARY RAMP	SQ YD	939	939	
40604062	HOT-MIX ASPHALT SURFACE COURSE, IL-9.5, MIX "D", N70	TON	1901	1901	
44000155	HOT-MIX ASPHALT SURFACE REMOVAL, 1 1/2"	SQ YD	22632	22632	
44201373	CLASS C PATCHES, TYPE I, 12 INCH	SQ YD	23	23	
44201377	CLASS C PATCHES, TYPE II, 12 INCH	SQ YD	233	233	
44201381	CLASS C PATCHES, TYPE III, 12 INCH	SQ YD	80	80	
44201383	CLASS C PATCHES, TYPE IV, 12 INCH	SQ YD	63	63	
44213204	TIE BARS 3/4"	EACH	99	99	
67100100	MOBILIZATION	L SUM	1	1	
70102620	TRAFFIC CONTROL AND PROTECTION, STANDARD 701501	L SUM	1	1	
70102635	TRAFFIC CONTROL AND PROTECTION, STANDARD 701701	L SUM	1	1	

REV - MS

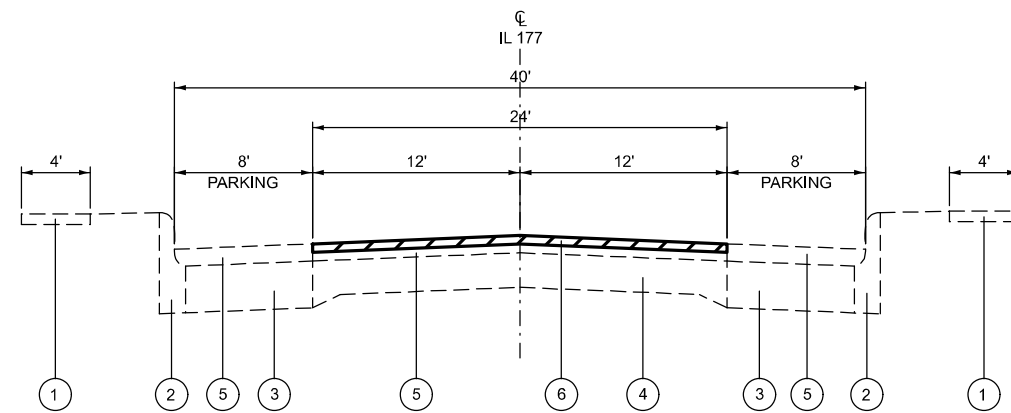
USER NAME = edison.zohfonyi	DESIGNED -	REVISED -	STATE OF ILLINOIS DEPARTMENT OF TRANSPORTATION	SUMMARY OF QUANTITY				FAU RTE.	SECTION	COUNTY	TOTAL SHEETS	SHEET NO.		
	DRAWN -	REVISED -		SCALE:	SHEET 1	OF 2	SHEETS	STA.	TO STA.	9377	1Z, RS-5	ST. CLAIR	9	3
	CHECKED -	REVISED -		CONTRACT NO. 76V02										
PLOT DATE = 12/1/2025	DATE -	REVISED -		ILLINOIS FED. AID PROJECT										

MODEL: SOQ-2 (Sheet)
 FILE NAME: c:\p\work\wv\illinois.gov\edison.zohfanyi@illinois.gov\1173598\176\02-sht-SOQ.dgn

CODE NO.	ITEM	UNIT	TOTAL QUANTITY	CONSTR. CODE	
				100% STATE ROADWAY	
				0005	
				URBAN	
70107025	CHANGEABLE MESSAGE SIGN	CAL DA	140	140	
70300100	SHORT TERM PAVEMENT MARKING	FOOT	1000	1000	
70300150	SHORT TERM PAVEMENT MARKING REMOVAL	SQ FT	349	349	
70300211	TEMPORARY PAVEMENT MARKING LETTERS AND SYMBOLS - PAINT	SQ FT	80	80	
70300241	TEMPORARY PAVEMENT MARKING - LINE 6"- PAINT	FOOT	15228	15228	
70300261	TEMPORARY PAVEMENT MARKING - LINE 12"- PAINT	FOOT	863	863	
70300281	TEMPORARY PAVEMENT MARKING - LINE 24"- PAINT	FOOT	60	60	
* 78000100	THERMOPLASTIC PAVEMENT MARKING - LETTERS AND SYMBOLS	SQ FT	80	80	
* 78000400	THERMOPLASTIC PAVEMENT MARKING - LINE 6"	FOOT	15228	15228	
* 78000600	THERMOPLASTIC PAVEMENT MARKING - LINE 12"	FOOT	863	863	
* 78000650	THERMOPLASTIC PAVEMENT MARKING - LINE 24"	FOOT	60	60	
* 78100100	RAISED REFLECTIVE PAVEMENT MARKER	EACH	271	271	
78300200	RAISED REFLECTIVE PAVEMENT MARKER REMOVAL	EACH	271	271	
78300202	PAVEMENT MARKING REMOVAL - WATER BLASTING	SQ FT	8447	8447	

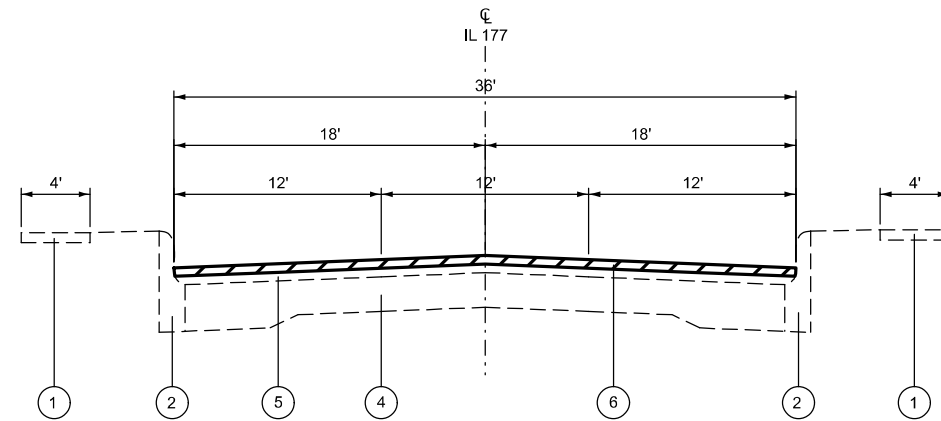
* SPECIALTY ITEM

USER NAME = edison.zohfanyi	DESIGNED -	REVISED -	STATE OF ILLINOIS DEPARTMENT OF TRANSPORTATION	SUMMARY OF QUANTITY				F.A.U RTE.	SECTION	COUNTY	TOTAL SHEETS	SHEET NO.
	DRAWN -	REVISED -		9377	1Z, RS-5	ST. CLAIR	9	4				
	CHECKED -	REVISED -						CONTRACT NO. 76V02				
PLOT DATE = 12/1/2025	DATE -	REVISED -		SCALE:	SHEET 2	OF 2	SHEETS	STA.	TO STA.	ILLINOIS FED. AID PROJECT		



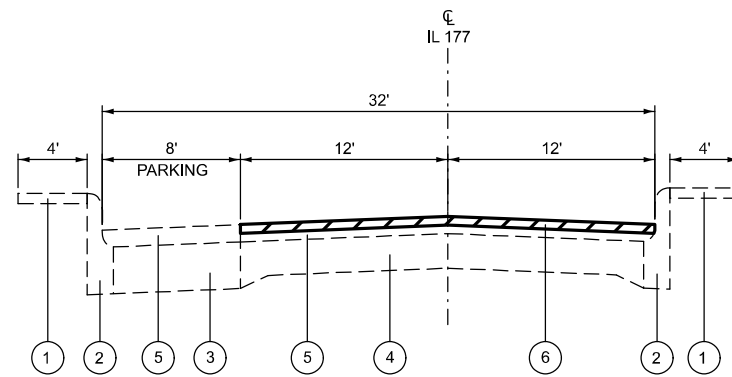
EXISTING TYPICAL SECTION

STA. 550+60 TO STA. 580+90
 STA. 589+38 TO STA. 598+49
 STA. 626+24 TO STA. 639+25



EXISTING TYPICAL SECTION

STA. 580+90 TO STA. 589+38



EXISTING TYPICAL SECTION

STA. 598+49 TO STA. 618+22.00
 STA. 618+22.00 TO 626+24.00 (PCC PAVEMENT OMISSION)

LEGEND

- ① EXISTING CONCRETE SIDEWALK
- ② EXISTING CONCRETE C&G
- ③ EXISTING PCC BASE COURSE, 9"
- ④ EXISTING PCC BASE COURSE, 7"
- ⑤ EXISTING BITUMINOUS OVERLAY, 3"
- ⑥ PROPOSED HMA SURFACE REMOVAL, 1½"
- ⑦ PROPOSED BITUMINOUS MATERIAL (TACK COAT)
- ⑧ PROPOSED LONGITUDINAL JOINT SEALANT
- ⑨ PROPOSED HMA SURFACE COURSE, 1½"

MODEL: Typical Section-1 (Sheet)
 FILE NAME: c:\p\work\project\illinois.gov\edison.zohfonyi\1173598\176\02-shh-typical.dgn

USER NAME = edison.zohfonyi	DESIGNED -	REVISED -
	DRAWN -	REVISED -
	CHECKED -	REVISED -
PLOT DATE = 12/1/2025	DATE -	REVISED -

**STATE OF ILLINOIS
 DEPARTMENT OF TRANSPORTATION**

TYPICAL SECTIONS

SCALE: SHEET 1 OF 2 SHEETS STA. TO STA.

F.A.U. RTE.	SECTION	COUNTY	TOTAL SHEETS	SHEET NO.
9377	1Z, RS-5	ST. CLAIR	9	5
CONTRACT NO. 76V02				
ILLINOIS FED. AID PROJECT				

PAVEMENT MARKING SCHEDULE

LOCATION		THERMOPLASTIC AND TEMPORARY PAVEMENT MARKING								PAVEMENT MARKING REMOVAL - WATER BLASTING	SHORT TERM PAVEMENT MARKING	SHORT TERM PAVEMENT MARKING REMOVAL	RAISED REFLECTIVE PAVEMENT MARKER		RAISED REFLECTIVE PAVEMENT MARKER REMOVAL
STATION		LINE - 6"				LINE - 12" DIAGONAL	24" WHITE STOP LINE	LETTERS AND SYMBOLS	ONE WAY CRYSTAL				TWO WAY AMBER		
FROM	TO	WHITE SOLID	WHITE SKIP-DASH	YELLOW SOLID	YELLOW SKIP-DASH	12" WHITE SOLID LINE CROSSWALK	FEET	SQ FT						FEET	
		FEET	FEET	FEET	FEET	FEET	FEET	FEET	FEET	FEET	FEET	FEET	FEET	FEET	
550+60.00	551+47.00	87			30	91				120	10	4		3	3
551+47.00	552+26.00				20					10	10	4		2	2
552+26.00	559+27.00	1426			180					803	70	24		18	18
559+27.00	560+21.00	94			30					62	10	4		3	3
560+21.00	562+35.00	428			60					244	20	7		6	6
562+35.00	563+17.00				30					15	10	4		3	3
563+17.00	568+55.00	538			140					339	50	17		14	14
568+55.00	569+50.00				30					15	10	4		3	3
569+50.00	573+63.00	826			110					468	40	14		11	11
573+63.00	574+38.00				20					10	10	4		2	2
574+38.00	577+44.00	612			80					346	30	10		8	8
577+44.00	578+39.00				30	48				47	10	4		3	3
578+39.00	580+89.00	500			70					285	30	10		7	7
580+89.00	582+82.00			772			54			440	20	7		10	10
582+82.00	583+67.00		30	340			18			203	10	4		6	6
583+67.00	584+81.00	114		228				24	40	259	80	27	2	3	5
584+81.00	585+60.00					176				118	10	4			0
585+60.00	586+57.00	97		194				24	40	234	80	27	2	3	5
586+57.00	587+52.00		30	380			18			223	10	4		6	6
587+52.00	588+33.00			324			30			192	10	4		6	6
588+33.00	589+38.00	105		420			24			287	10	4		6	6
589+38.00	591+24.00	372			50					211	20	7		5	5
591+24.00	592+20.00				30					15	10	4		3	3
592+20.00	597+94.00	1148			150					649	60	20		15	15
597+94.00	599+00.00				30	48				47	10	4		3	3
599+00.00	603+10.00	410			110					260	40	14		11	11
603+10.00	604+22.00				30	48				47	20	7		3	3
604+22.00	611+28.00	706			180	48				475	70	24		18	18
611+28.00	611+92.00				20	96				74	10	4		2	2
611+92.00	614+48.00	256			70					163	30	10		7	7
614+48.00	615+73.00				40	96				84	20	7		4	4
615+73.00	618+22.00	249			70	48				192	30	10		7	7
618+22.00	626+24.00	PCC PAVEMENT OMISSION													
626+24.00	639+25.00	2602			330		20	12		1510	140	47		66	66
TOTAL		10570	60	2658	1940	699	164	60	80	8447	1000	349	4	267	271

MODEL: Schedule of Quantities-1 (Sheet)
 FILE NAME: c:\p\work\illinois\gov\edison\zohfonyl@illinois.gov\1173598\76\02-sh-schedule.dgn

USER NAME = edison.zohfonyl	DESIGNED -	REVISED -
	DRAWN -	REVISED -
	CHECKED -	REVISED -
PLOT DATE = 12/1/2025	DATE -	REVISED -

**STATE OF ILLINOIS
DEPARTMENT OF TRANSPORTATION**

SCHEDULE OF QUANTITIES

SCALE: SHEET 1 OF 2 SHEETS STA. TO STA.

F.A.U. RTE.	SECTION	COUNTY	TOTAL SHEETS	SHEET NO.
9377	1Z, RS-5	ST. CLAIR	9	7
CONTRACT NO. 76V02				
ILLINOIS FED. AID PROJECT				

RESURFACING SCHEDULE

STATION		DIMENSION		HMA SURFACE REMOVAL 1 1/2"	LONGITUDINAL JOINT SEALANT	BITUMINOUS MATERIALS (TACK COAT)	HMA SURFACE COURSE IL-9.5 MIX "D" N70	MATERIAL TRANSFER DEVICE
		LENGTH	WIDTH					
FROM	TO	FEET	FEET	SQ YD	FEET	POUND	TON	TON
550+60.00	580+90.00	3030.00	24	8080.0	3030.0	3636	678.7	678.7
580+90.00	589+38.00	848.00	36	3392.0	848.0	1526.4	284.9	284.9
589+38.00	598+49.00	911.00	24	2429.3	911.0	1093.2	204.1	204.1
598+49.00	618+22.00	1973.00	24	5261.3	1973.0	2367.6	442.0	442.0
618+22.00	626+24.00	PCC PAVEMENT OMISSION						
626+24.00	639+25.00	1301.00	24	3469.3	1301.0	1561.20	291.42	291.4
TOTAL				22632	8063	10184	1901	1901

PATCHING SCHEDULE

PATCH NO.	STATION	EB / WB	LENGTH	WIDTH	AREA	CLASS C PATCHES				TIE BARS 3/4"
						12 INCHES				
						TYPE I	TYPE II	TYPE III	TYPE IV	
FEET	FEET	SQ YD	SQ YD	SQ YD	SQ YD	SQ YD	SQ YD	EACH		
1	551+60.00	EB DL	6	12	8		8			
2	551+60.00	WB DL	6	12	8		8			
3	552+15.00	EB DL	6	12	8		8			
4	552+15.00	WB DL	6	12	8		8			
5	553+36.00	EB DL	8	12	11		11			
6	553+36.00	WB DL	8	12	11		11			
7	554+25.00	EB DL	8	12	11		11			
8	558+67.00	EB DL	6	12	8		8			
9	558+67.00	WB DL	6	12	8		8			
10	567+31.00	EB DL	12	12	16			16		
11	567+93.00	WB DL	6	6	4	4				
12	569+26.00	EB DL	6	12	8		8			
13	569+36.00	WB DL	6	12	8		8			
14	569+88.00	EB DL	6	12	8		8			
15	569+88.00	WB DL	6	12	8		8			
16	576+03.00	EB DL	6	6	4	4				
17	581+67.00	EB DL	20	6	14		14		9	
18	581+67.00	WB DL	40	6	27				27	19
19	581+84.00	EB DL	8	20	18			18		
20	581+84.00	WB DL	8	20	18			18		
21	583+56.00	EB DL	40	6	27				27	19
22	586+29.00	WB DL	8	12	11		11			
23	586+29.00	WB TL	8	12	11		11			
24	589+29.00	EB DL	8	12	11		11			
25	594+86.00	EB DL	20	6	14		14		9	
26	594+86.00	WB DL	6	6	4	4				
27	595+24.00	EB DL	6	6	4	4				
28	605+13.00	EB DL	20	6	14		14		9	
29	608+08.00	EB DL	25	6	17			17		12
30	630+78.00	EB DL	6	6	4	4				
31	632+26.00	EB DL	20	6	14		14		9	
SUBTOTAL						20	202	69	54	86
15% ANTICIPATED FAILURES						3	31	11	9	13
TOTAL						23	233	80	63	99

TEMPORARY RAMP / ACCESS

CL OF ENTRANCE OR SIDEROAD	LOCATION	LENGTH	WIDTH	TEMPORARY RAMP	COMMENTS
		FEET	FEET	SQ YD	
550+60.00		5	24	14	BEGIN PROJECT
551+78.00	R	3	60	20	S COUNTY RD
551+78.00	L	3	65	22	N COUNTY RD
552+57.00	R	3	30	10	
553+00.00	L	3	34	12	
553+12.00	R	3	35	12	
553+58.00	R	3	38	13	
553+94.00	L	3	30	10	
553+05.00	R	3	33	11	
554+93.00	L/R	3	40	14	
555+88.00	L/R	3	38	13	
556+93.00	L/R	3	30	10	
557+43.00	R	3	19	7	
558+50.00	L/R	3	57	19	
559+75.00	L	3	40	14	GRANT DR.
562+72.00	L	3	30	10	CHURCH ST.
563+43.00	R	3	48	16	
564+34.00	R	3	56	19	
565+93.00	L/R	3	75	25	
566+86.00	L/R	3	127	43	
568+30.00	R	3	18	6	
568+97.00	L/R	3	141	47	10TH STREET
573+93.00	L/R	3	65	22	9TH STREET
577+90.00	L/R	3	65	22	8TH STREET
578+85.00	L/R	3	67	23	
581+45.00	L/R	3	65	22	7TH STREET
583+18.00	L/R	3	45	15	
585+16.00	L/R	3	160	54	6TH STREET
586+36.00	L/R	3	66	22	
588+13.00	L/R	3	65	22	5TH STREET
591+63.00	L/R	3	65	22	4TH STREET
595+53.00	L/R	3	125	42	
596+73.00	L/R	3	83	28	
598+52.00	L/R	3	91	31	2ND STREET
601+06.00	R	3	36	12	
603+48.00	L/R	3	82	28	1ST STREET
610+18.00	L/R	3	60	20	
611+58.00	L/R	3	80	27	RAILWAY ST.
615+10.00	L/R	3	100	34	MARKET ST.
618+22.00		5	24	14	PCC PAVEMENT OMISSION
626+24.00		5	24	14	PCC PAVEMENT OMISSION
629+26.00	L/R	3	59	20	JOHN STREET
632+78.00	L/R	3	60	20	BERNARD ST.
636+24.00	L/R	3	60	20	AUGUST ST.
638+65.00	L/R	3	70	24	MINE RD
639+25.00		5	24	14	END PROJECT
TOTAL				939	

MODEL: Schedule of Quantities-2 (Sheet)
 FILE NAME: c:\pwworking\illinois.gov\1173598\1173598D76\02_sht-schedule.dgn

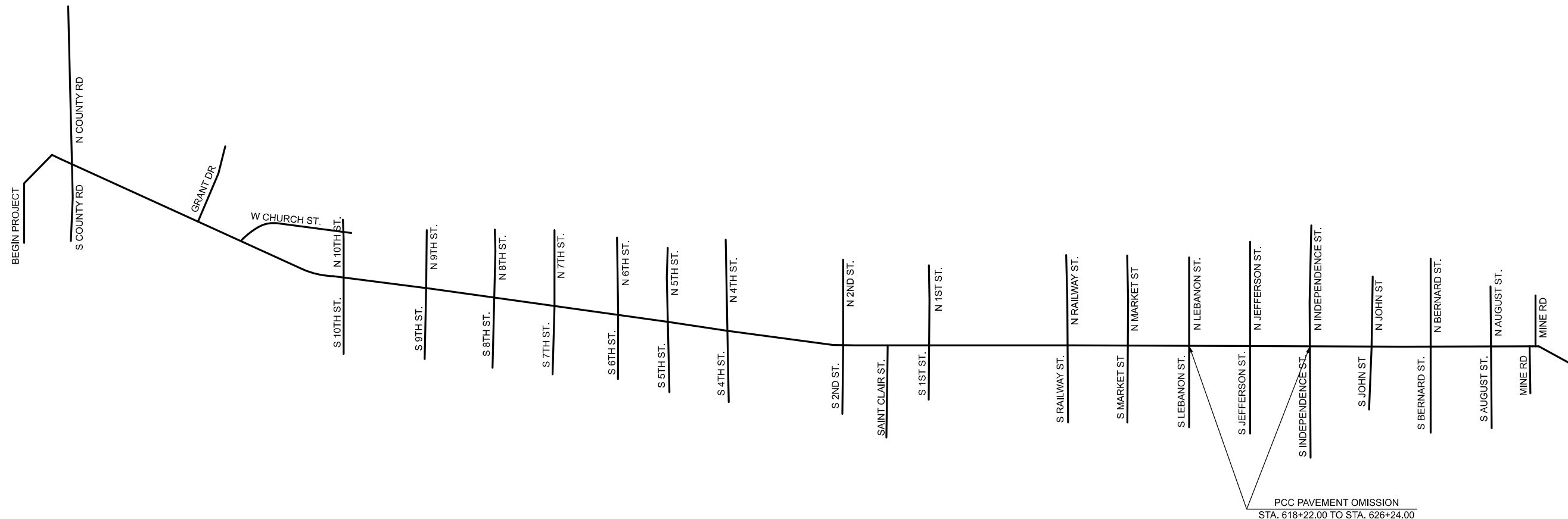
USER NAME = edison.zohfonyi	DESIGNED -	REVISED -
	DRAWN -	REVISED -
	CHECKED -	REVISED -
PLOT DATE = 12/1/2025	DATE -	REVISED -

**STATE OF ILLINOIS
DEPARTMENT OF TRANSPORTATION**

SCHEDULE OF QUANTITIES

SCALE: SHEET 2 OF 2 SHEETS STA. TO STA.

F A U RTE.	SECTION	COUNTY	TOTAL SHEETS	SHEET NO.
9377	1Z, RS-5	ST. CLAIR	9	8
CONTRACT NO. 78V02				
ILLINOIS FED. AID PROJECT				



MODEL: Location Map-1 [Sheet]
 FILE NAME: c:\p\work\vision\illinois.gov_edison.zohfonyl@illinois.gov\1173598\176\02-shr-clair.dgn

NOT TO SCALE

USER NAME = edison.zohfonyl DESIGNED - DRAWN - CHECKED - PLOT DATE = 12/1/2025 DATE -		REVISED - REVISED - REVISED - REVISED -		STATE OF ILLINOIS DEPARTMENT OF TRANSPORTATION		LOCATION MAP				F.A.U. RTE. 9377 SECTION 1Z, RS-5 COUNTY ST. CLAIR TOTAL SHEETS 9 SHEET NO. 9 CONTRACT NO. 76V02			
						SCALE: NTS	SHEET 1	OF 1	SHEETS	STA.	TO STA.	ILLINOIS FED. AID PROJECT	