

FRAMING PLAN

- (A) (B) - Beam End Repair (See sheet 4 of 6.)
- (C) (D) - Beam End Repair (See sheet 5 of 6.)
- (E) (F) - Beam End Repair (See sheet 3 of 6.)
- (G) (H) (I) (J) - Beam End Repair (See sheet 6 of 6.)
- (K) (L) (M) - Beam End Repair (See sheet 2 of 6.)
- (T) - Temporary Shoring and Cribbing

GENERAL NOTES

All structural steel shall conform to AASHTO Classification M-270 Gr. 36, unless otherwise noted.

Plan dimensions and details relative to existing plans are subject to nominal construction variations. The Contractor shall field verify existing dimensions and details affecting new construction and make necessary approved adjustments prior to construction or ordering of materials. Such variations shall not be cause for additional compensation for a change in scope of the work, however, the Contractor will be paid for the quantity actually furnished at the unit price bid for the work.

Fasteners shall be high strength bolts. Flange splice holes shall be $1\frac{1}{16}$ "Ø for $\frac{7}{8}$ "Ø bolts. Web splice holes shall be $1\frac{3}{16}$ "Ø for $\frac{3}{4}$ "Ø bolts. Diaphragm connection holes shall be $1\frac{3}{16}$ "Ø for $\frac{3}{4}$ "Ø bolts. Two hardened washers shall be required at diaphragm connections.

Existing diaphragms to be placed tight against concrete. Any gaps shall be filled with epoxy. See Special Provision "Epoxy Injection. Cost included with Furnishing and Erecting Structural Steel.

Existing diaphragms to be trimmed as required to fit.

Cost of removal and re-installation of all members necessary to complete the work as detailed on the plans and as specified in the Special Provisions shall be included with Furnishing and Erecting Structural Steel.

The existing structural steel coating contains lead. The Contractor shall take appropriate precautions to deal with the presence of lead on this project.

Existing structural steel that will be in contact with new structural steel shall be cleaned and painted prior to erection as required by the special provision "Cleaning and Painting Contact Surface Areas of Existing Steel Structures".

All structural steel shall be shop painted with the inorganic zinc rich primer per AASHTO M300, Type 1. Cost included with Structural Steel Repair.

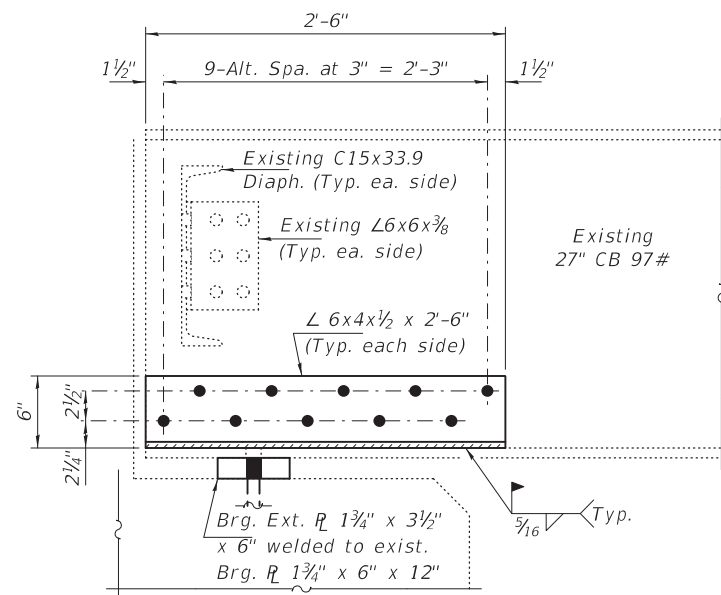
TOTAL BILL OF MATERIAL

ITEM	UNIT	QUANTITY
Structural Steel Removal	Pound	2300
Structural Steel Repair	Pound	270
Anchor Bolts, 1"Ø	Each	12
Tempoary Shoring & Cribbing	Each	2

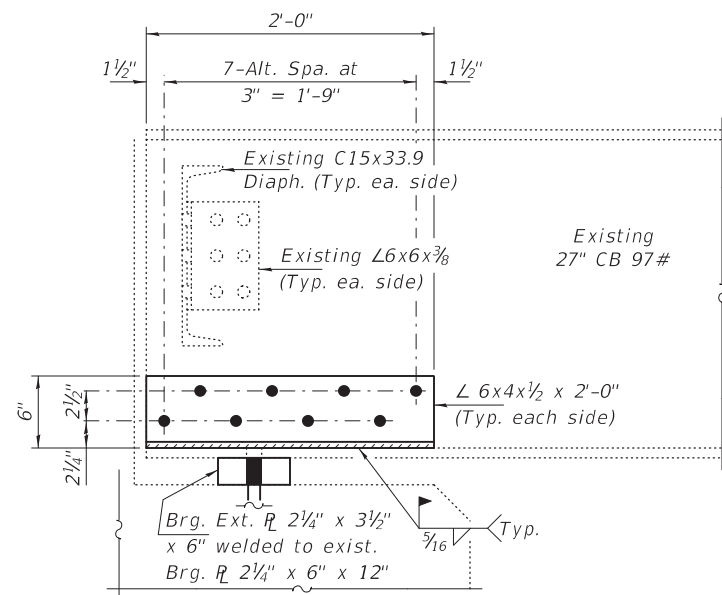


Expires: November 30, 2022

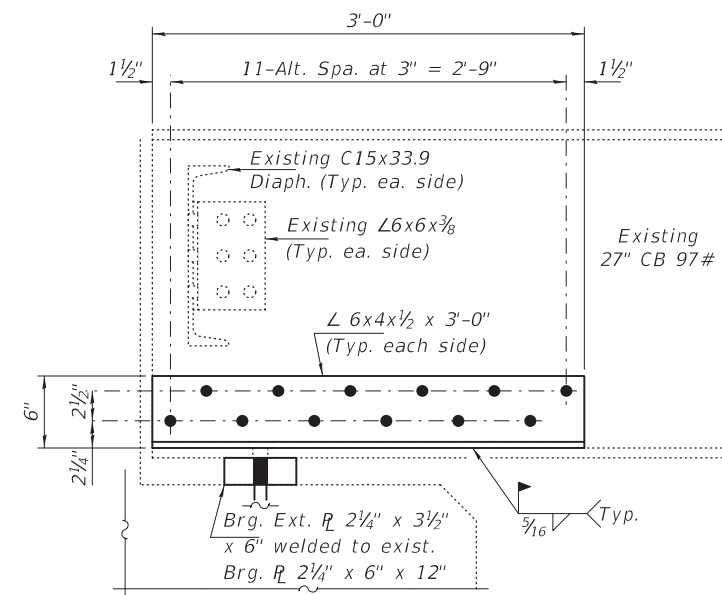
DESIGNED - Victor H. Veliz	EXAMINED - _____	DATE - JUNE 7, 2022	STATE OF ILLINOIS DEPARTMENT OF TRANSPORTATION	FRAMING PLAN & ELEVATION ILLINOIS ROUTE 14 OVER FOX RIVER SLOUGH SN 097-0032	F.A.P. RTE. 857	SECTION -	COUNTY - WHITE	TOTAL SHEETS -	SHEET NO. -
CHECKED - Adrian T. Halloway	PASSED - _____	REVISD - _____			CONTRACT NO.				
DRAWN - STEFFEN	_____	REVISD - _____			SHEET NO. 1 OF 6 SHEETS				
CHECKED - VHV ATH	_____				ILLINOIS FED. AID PROJECT				



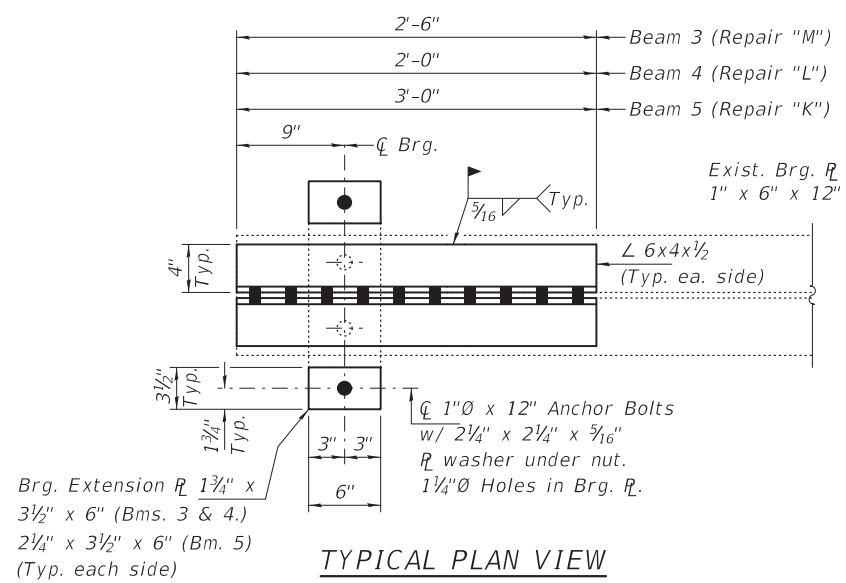
REPAIR DETAIL "M"
BENT 1 - BEAM 3
 (Looking North)



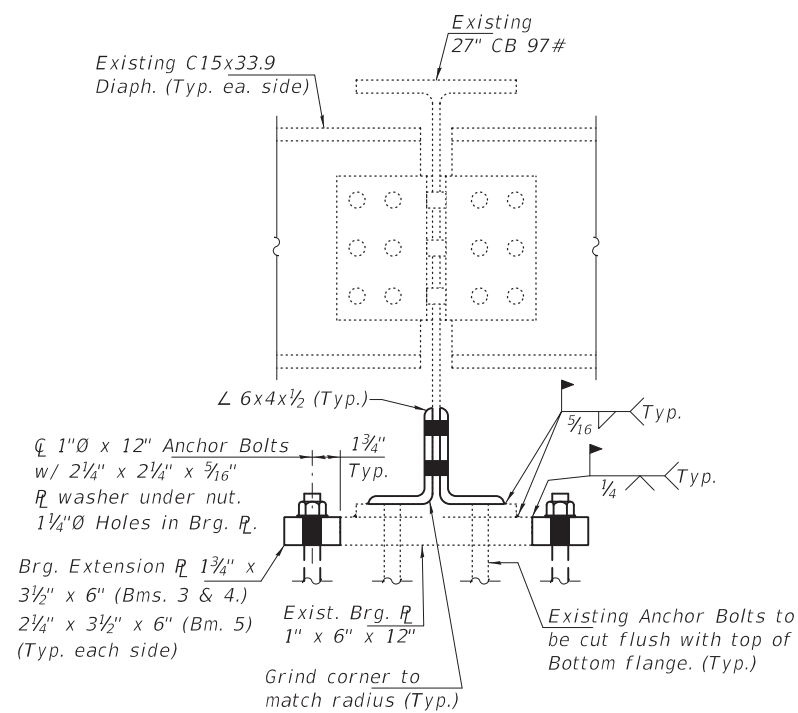
REPAIR DETAIL "L"
BENT 1 - BEAM 4
 (Looking North)



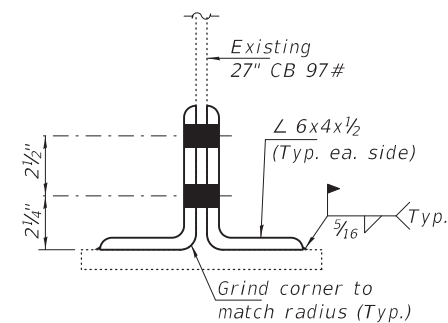
REPAIR DETAIL "K"
BENT 1 - BEAM 5
 (Looking North)



TYPICAL PLAN VIEW



TYPICAL SECTION AT BEARING



TYPICAL SECTION THRU FLANGE

BOLT HOLE LEGEND

- - Shop Drilled Holes
- - Field Drilled Holes

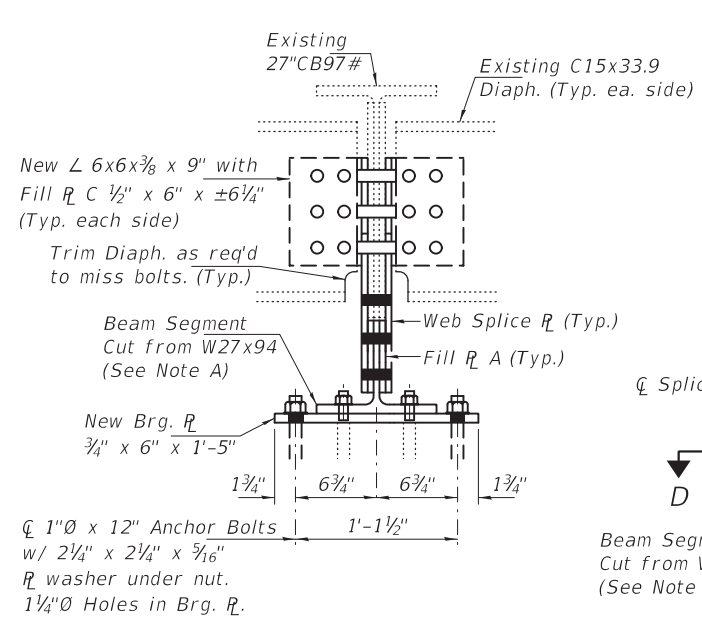
DESIGNED - VHV	EXAMINED - <i>Timothy A. [Signature]</i>	DATE - JUNE 7, 2022
CHECKED - ATH	ENGINEER OF STRUCTURAL SERVICES	
DRAWN - STEFFEN	PASSED - <i>Jaime F. [Signature]</i>	REVISER -
CHECKED - VHV ATH	ENGINEER OF BRIDGES AND STRUCTURES	REVISER -

STATE OF ILLINOIS
 DEPARTMENT OF TRANSPORTATION

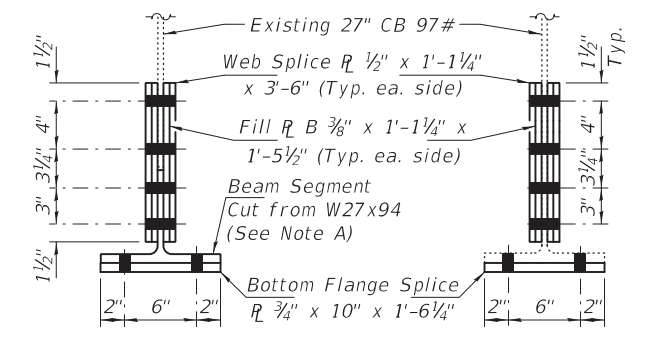
REPAIR DETAILS "K", "L", & "M"
 SN 097-0032

SHEET NO. 2 OF 6 SHEETS

F.A.P. RTE. 857	SECTION -	COUNTY - WHITE	TOTAL SHEETS -	SHEET NO. -
CONTRACT NO.				
ILLINOIS FED. AID PROJECT				

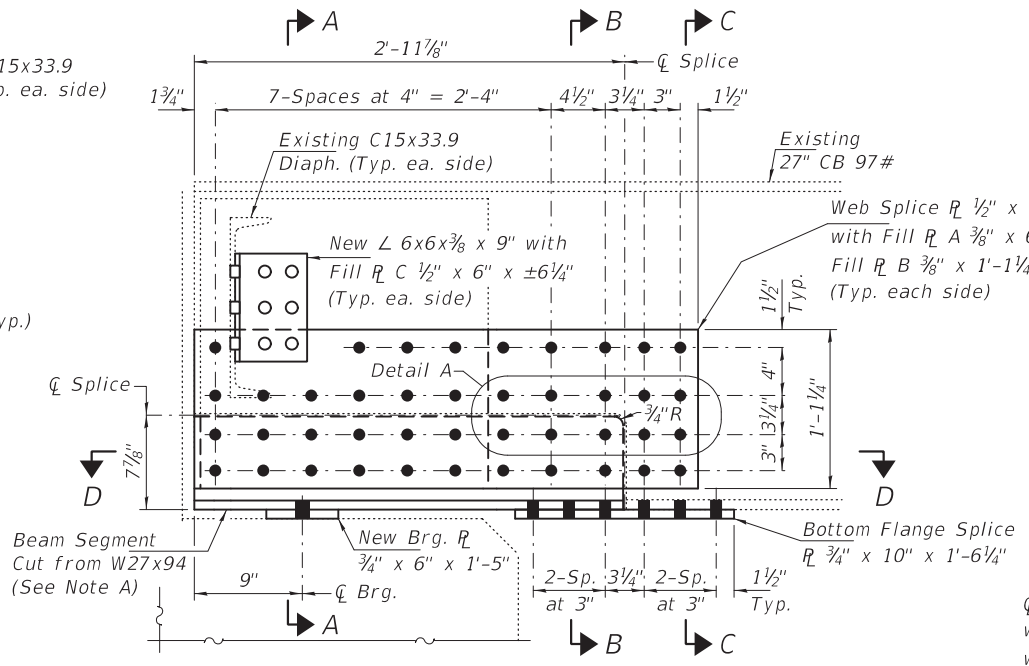


SECTION A-A

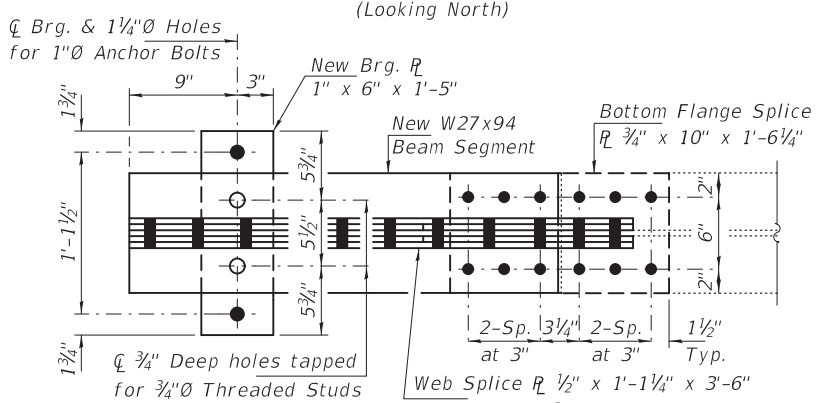


SECTION B-B

SECTION C-C

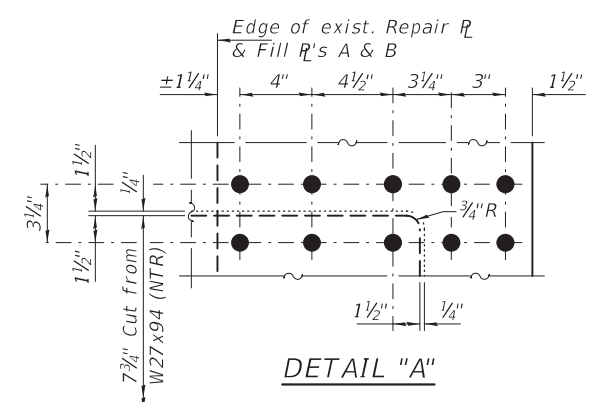


REPAIR DETAIL "E"
BENT 1 - BEAM 7
(Looking North)

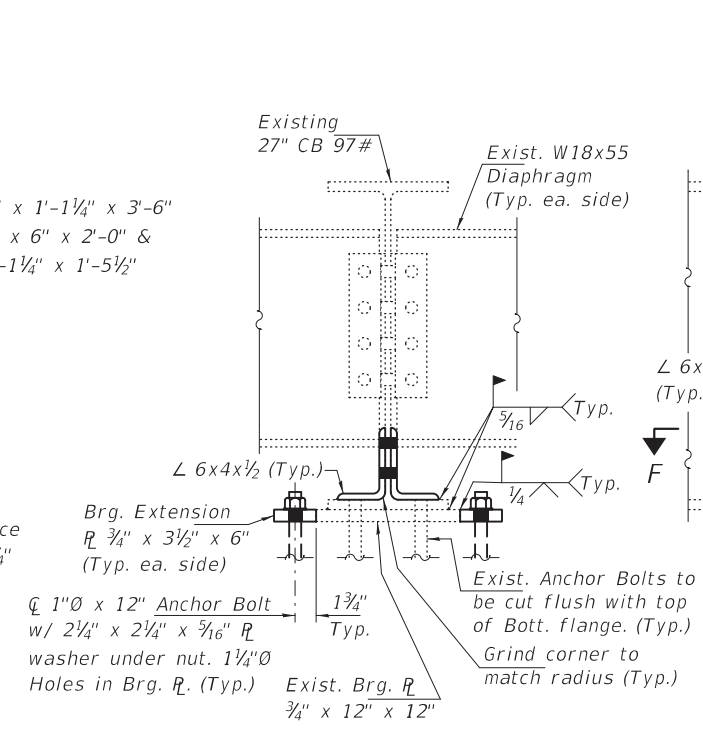


SECTION D-D

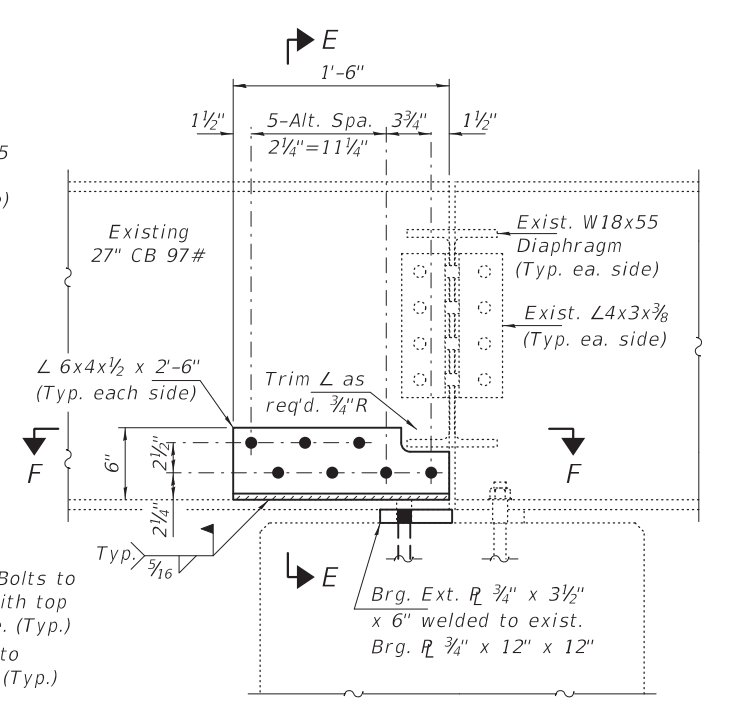
Note A:
Field drill holes in new beam segment using new splice plates as templates.



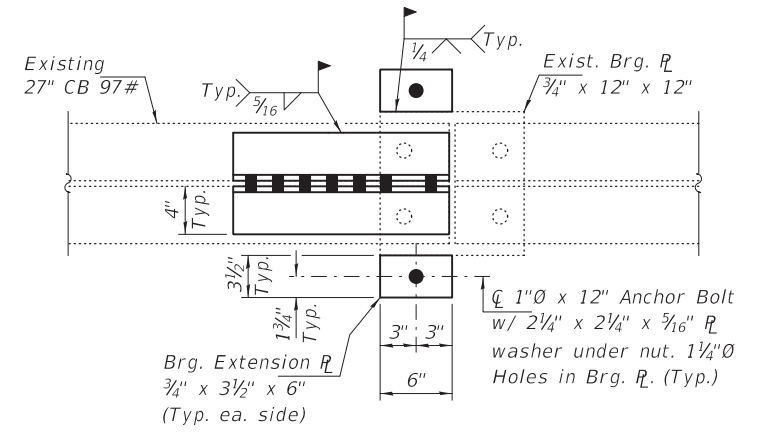
DETAIL "A"



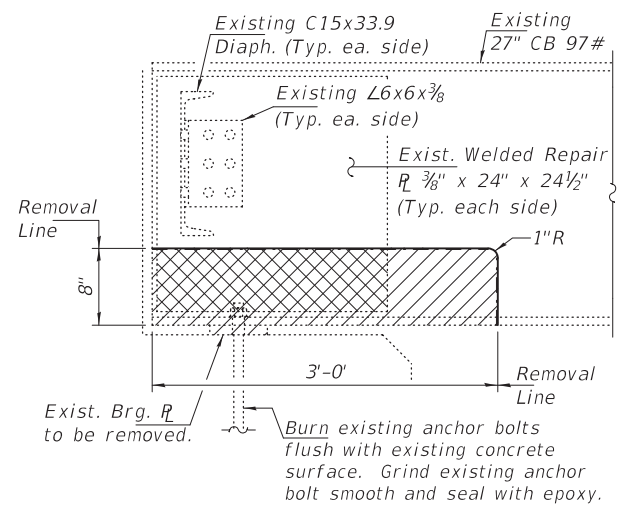
SECTION E-E



REPAIR DETAIL "F"
BENT 2 - SPAN 1 - BEAM 2
(Looking North)



SECTION F-F



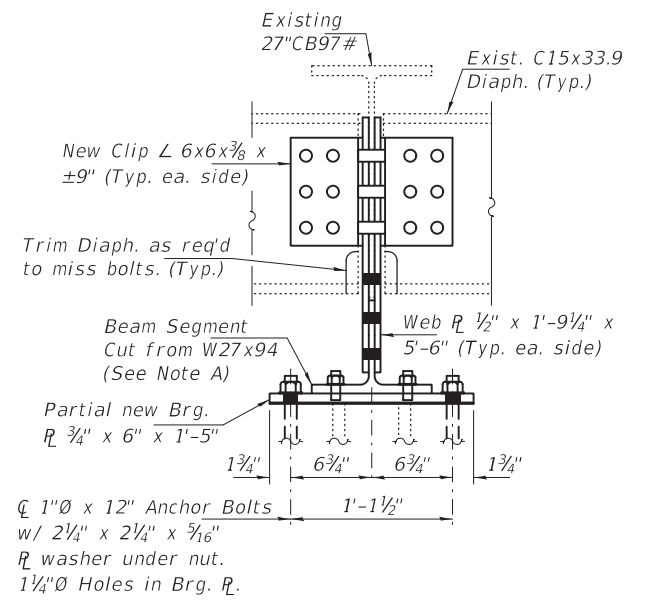
REMOVAL DETAIL FOR BEAM 7 AT BENT 1
(Looking North)

Hatched areas indicate limits of beam removal.
Cross-hatched areas indicate limits of beam and existing welded repair plate removal.
Cost included with Structural Steel Removal.

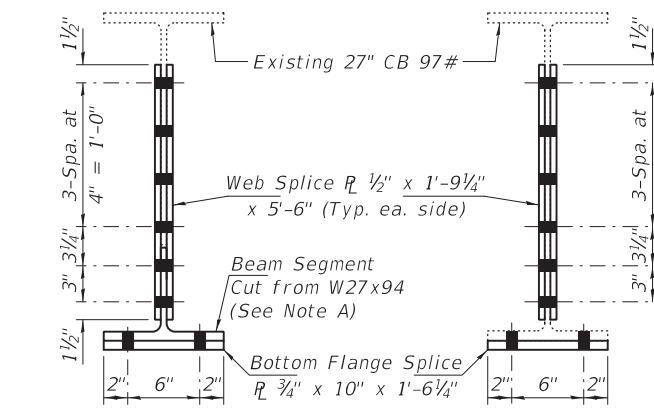
BOLT HOLE LEGEND

- - Shop Drilled Holes
- - Field Drilled Holes

DESIGNED - VHV	EXAMINED - <i>Timothy A. [Signature]</i>	DATE - JUNE 7, 2022	STATE OF ILLINOIS DEPARTMENT OF TRANSPORTATION	REPAIR DETAILS "E" & "F" SN 097-0032	F.A.P. RTE. 857	SECTION -	COUNTY - WHITE	TOTAL SHEETS -	SHEET NO. -
CHECKED - ATH	PASSED - <i>Jaime F. [Signature]</i>	REVISIONS -			SHEET NO. 3 OF 6 SHEETS	ILLINOIS FED. AID PROJECT			
DRAWN - STEFFEN	ENGINEER OF BRIDGES AND STRUCTURES				CONTRACT NO.				
CHECKED - VHV ATH									

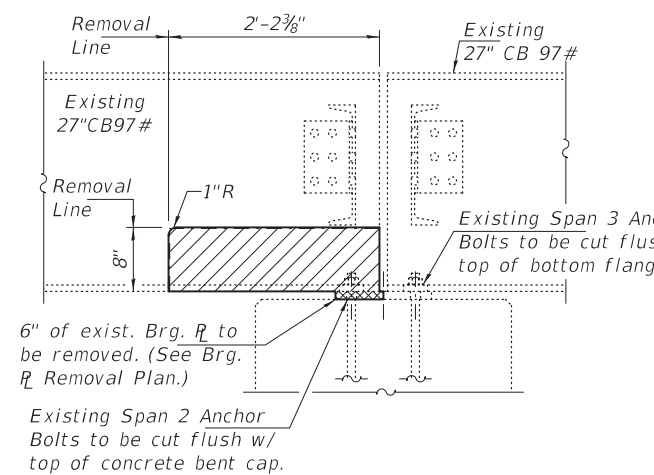


SECTION A-A

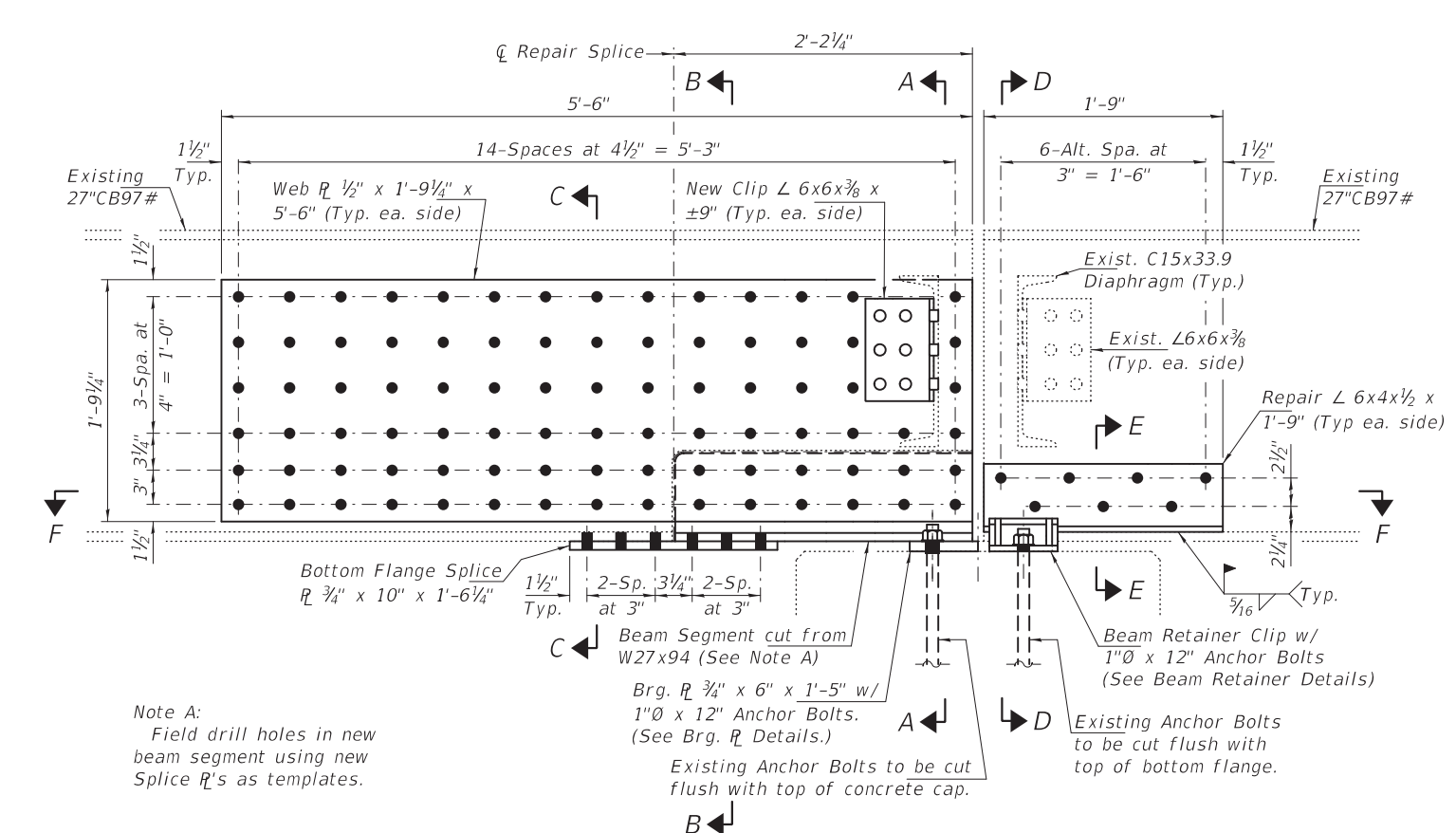


SECTION B-B

SECTION C-C

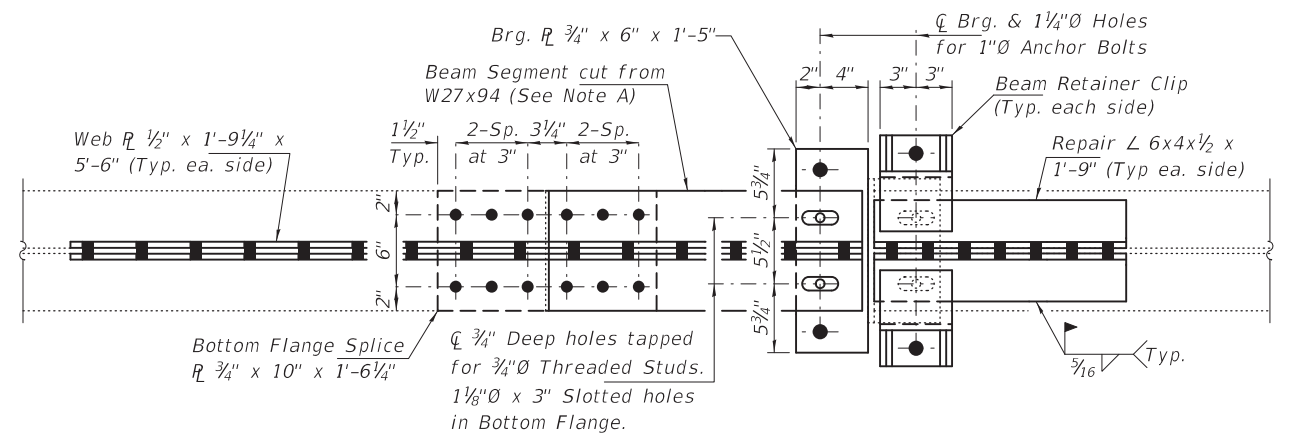


BEAM REMOVAL DETAIL AT BENT 3 - SPAN 2 - BEAM 2 (Looking North)

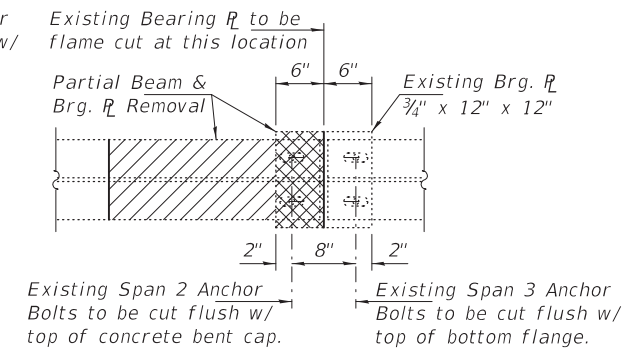


REPAIR DETAILS "A" & "B" AT BENT 3 - BEAM 2 - SPANS 2 & 3 (Looking North)

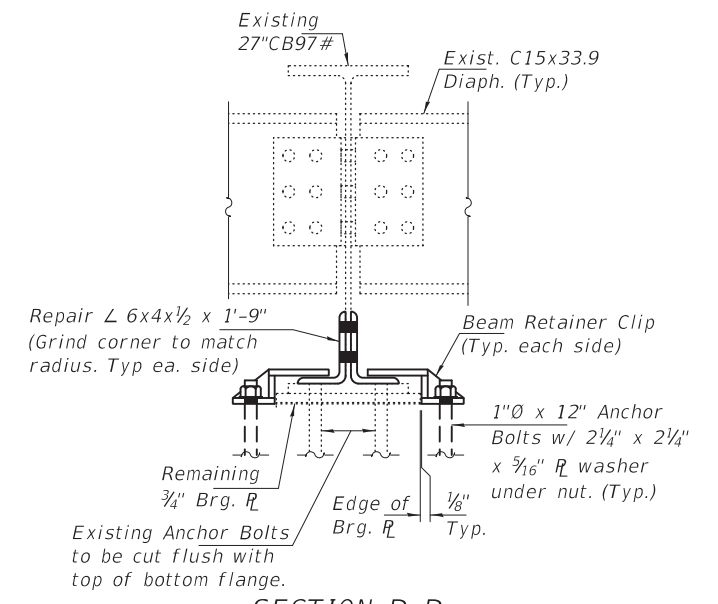
Note A: Field drill holes in new beam segment using new splice R's as templates.



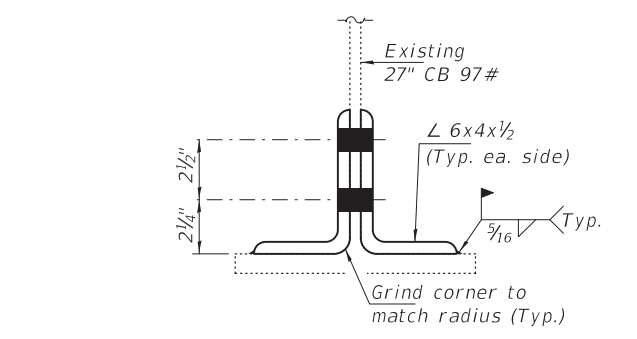
SECTION F-F



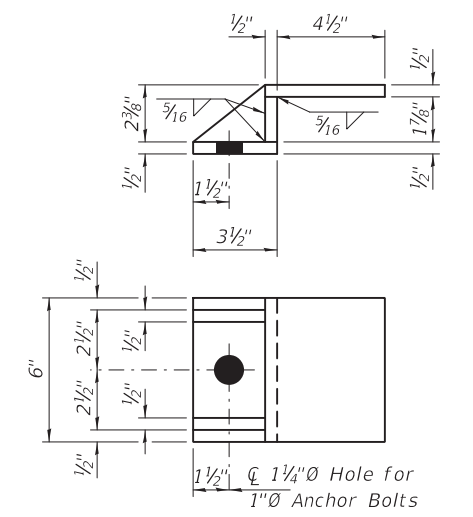
BEARING PLATE REMOVAL PLAN



SECTION D-D



SECTION E-E

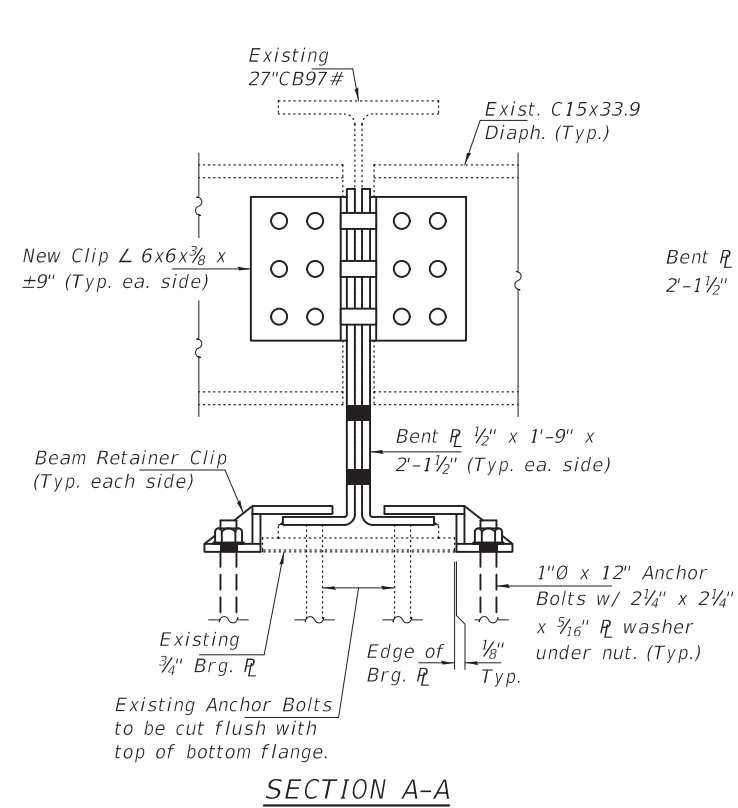


BEAM RETAINER CLIP (6-Required)

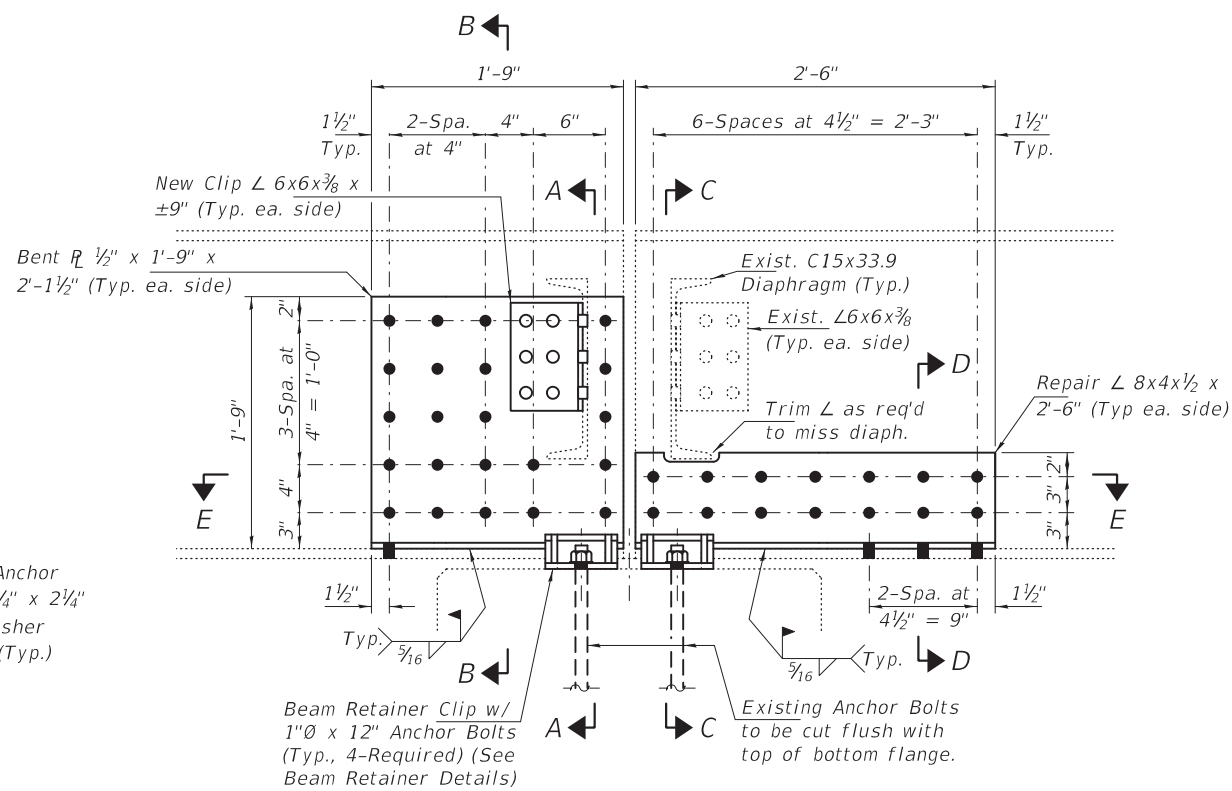
BOLT HOLE LEGEND

- - Shop Drilled Holes
- - Field Drilled Holes

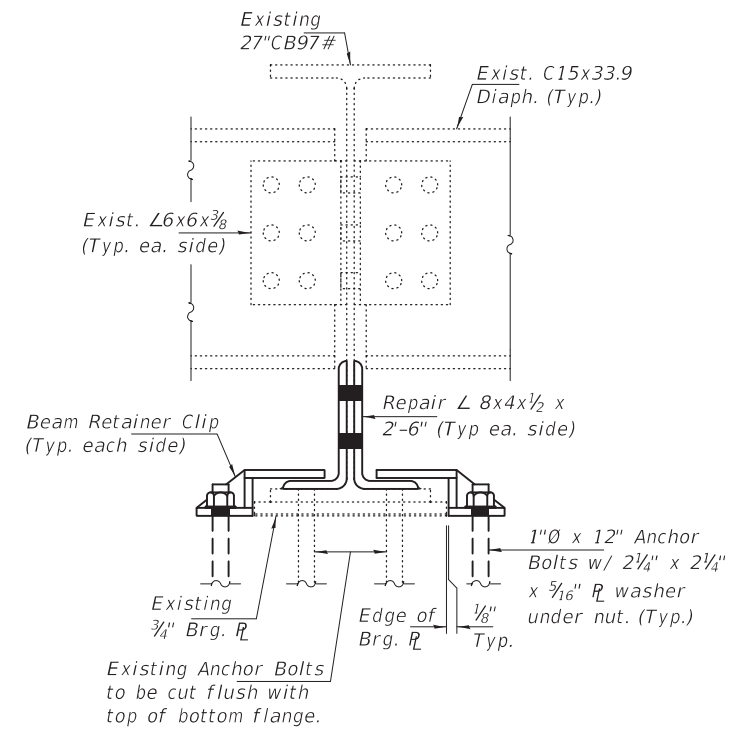
DESIGNED - VHV	EXAMINED - <i>Timothy A. Smith</i>	DATE - JUNE 7, 2022	STATE OF ILLINOIS DEPARTMENT OF TRANSPORTATION	REPAIR DETAILS "A" & "B" SN 097-0032	F.A.P. RTE. 857	SECTION -	COUNTY - WHITE	TOTAL SHEETS -	SHEET NO. -
CHECKED - ATH	PASSED - <i>Jaime F. Smith</i>	REVISIONS -			SHEET NO. 4 OF 6 SHEETS	ILLINOIS FED. AID PROJECT			
DRAWN - STEFFEN	ENGINEER OF BRIDGES AND STRUCTURES				CONTRACT NO.				
CHECKED - VHV ATH									



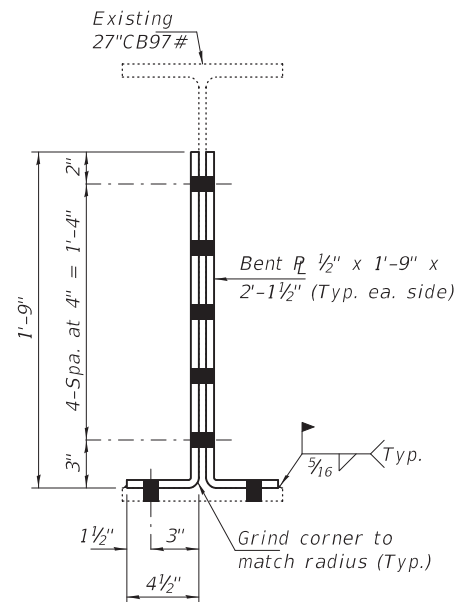
SECTION A-A



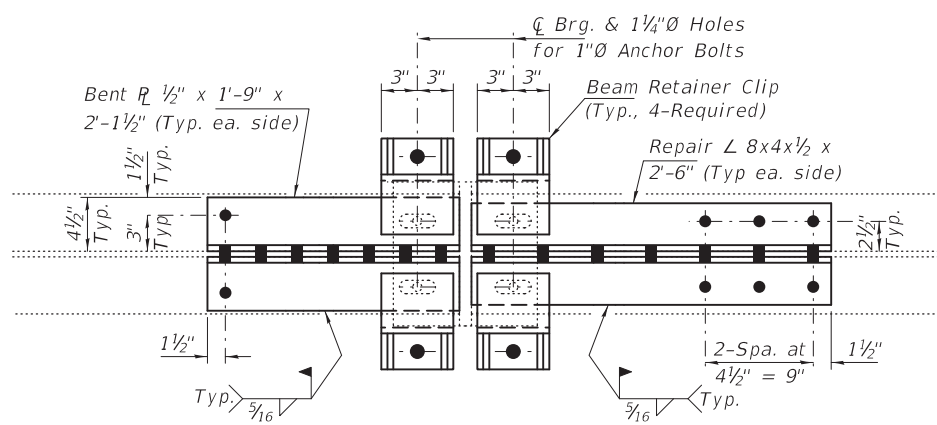
REPAIR DETAILS "C" & "D" AT BENT 3 - BEAM 7 - SPANS 2 & 3
(Looking North)



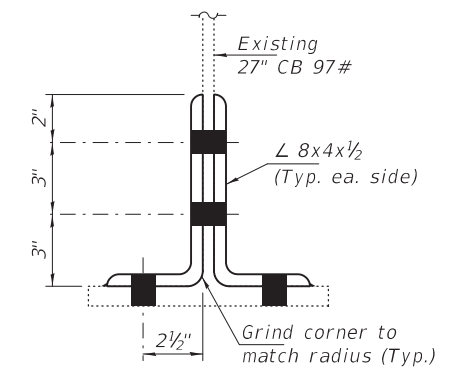
SECTION C-C



SECTION B-B



SECTION E-E



SECTION D-D

Notes:
For Beam Retainer Clip details
see sheet 4 of 6.

BOLT HOLE LEGEND

- - Shop Drilled Holes
- - Field Drilled Holes

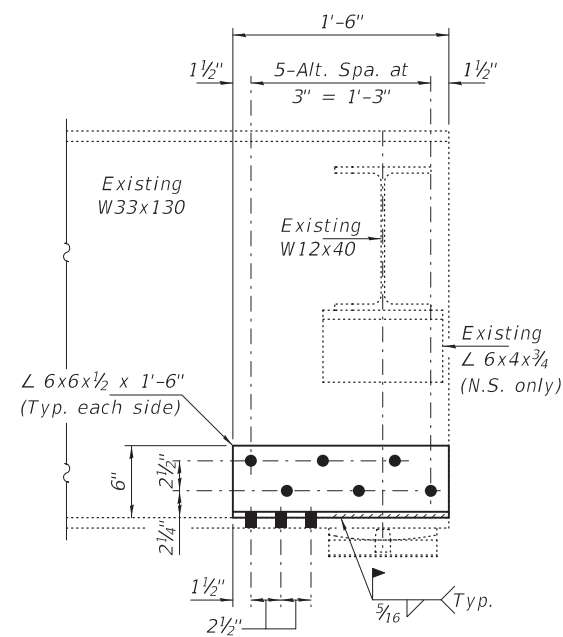
DESIGNED - VHV	EXAMINED - <i>Timothy A. [Signature]</i>
CHECKED - ATH	ENGINEER OF STRUCTURAL SERVICES
DRAWN - STEFFEN	PASSED - <i>Jaime F. [Signature]</i>
CHECKED - VHV ATH	ENGINEER OF BRIDGES AND STRUCTURES

DATE - JUNE 7, 2022
REVISED -
REVISED -

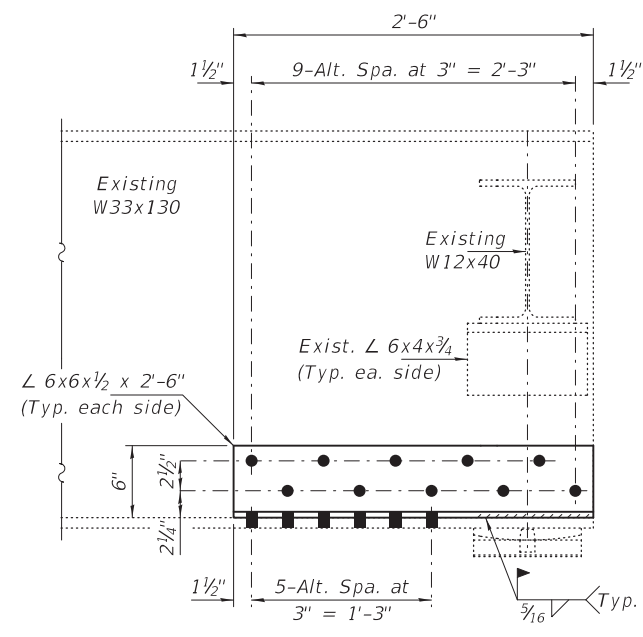
**STATE OF ILLINOIS
DEPARTMENT OF TRANSPORTATION**

REPAIR DETAILS "C" & "D"
SN 097-0032

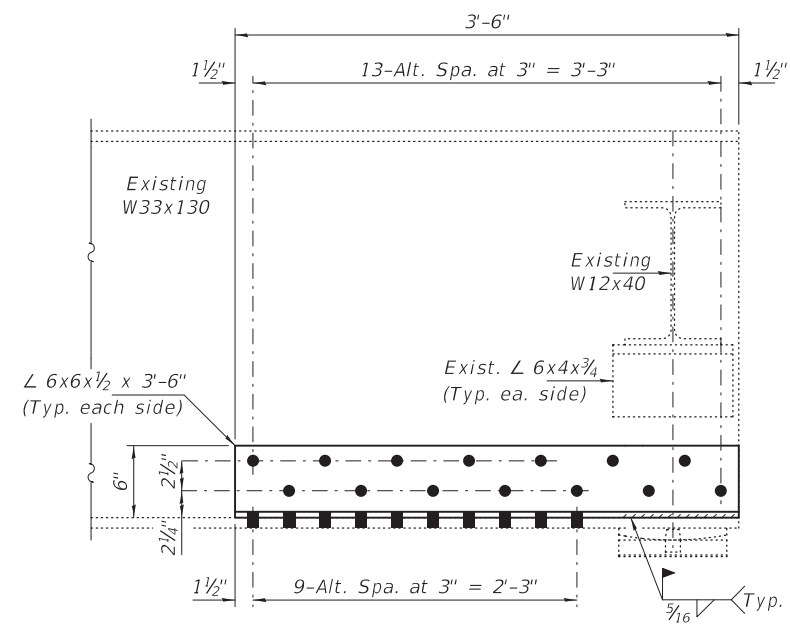
F.A.P. RTE. 857	SECTION -	COUNTY - WHITE	TOTAL SHEETS -	SHEET NO. -
CONTRACT NO.				
ILLINOIS FED. AID PROJECT				



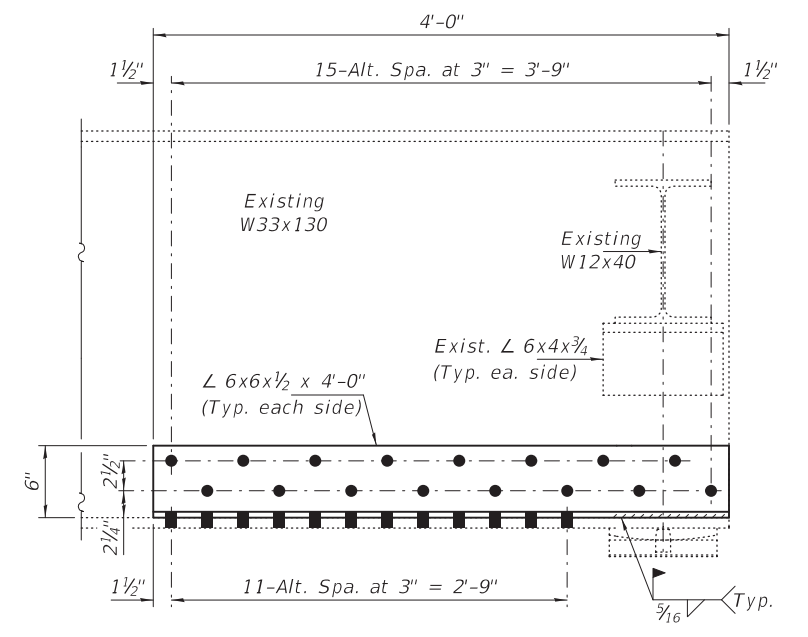
REPAIR DETAIL "J" ELEVATION
EAST ABUT. - BEAM 9
 (Looking North)



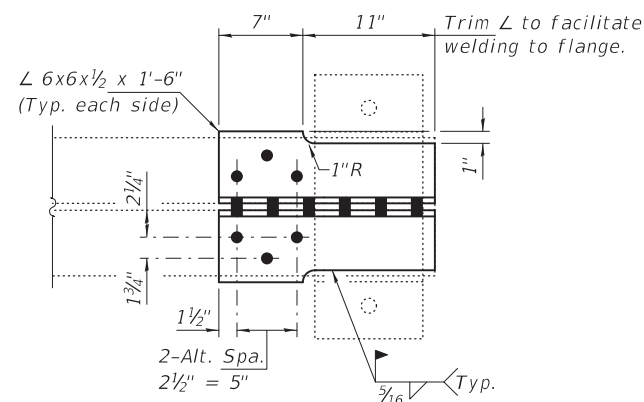
REPAIR DETAIL "I" ELEVATION
EAST ABUT. - BEAM 10
 (Looking North)



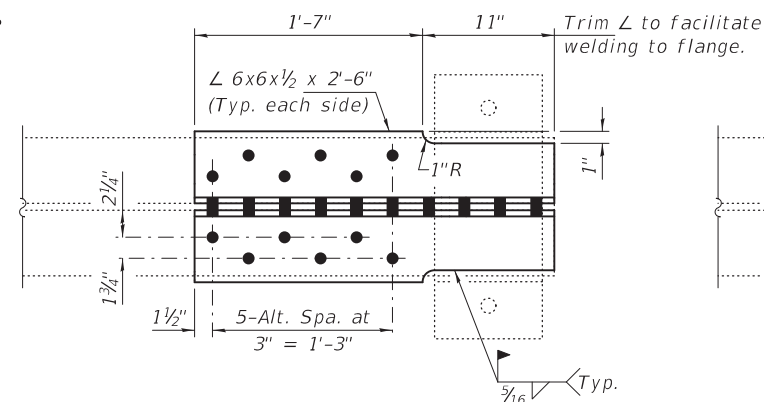
REPAIR DETAIL "H" ELEVATION
EAST ABUT. - BEAM 12
 (Looking North)



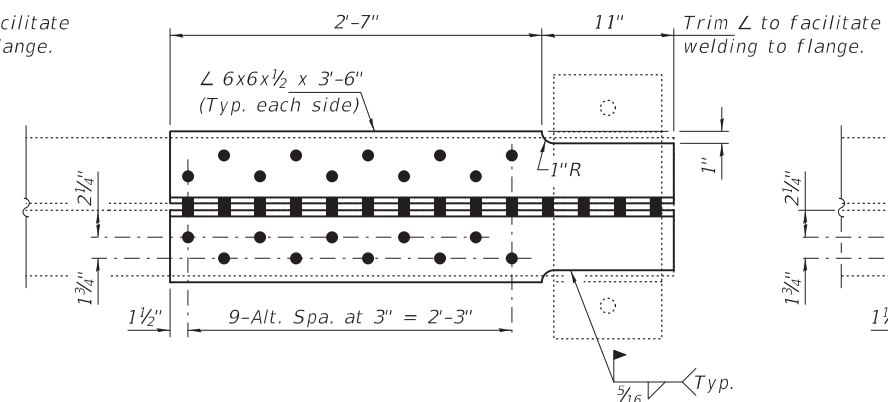
REPAIR DETAIL "G" ELEVATION
EAST ABUT. - BEAM 14
 (Looking North)



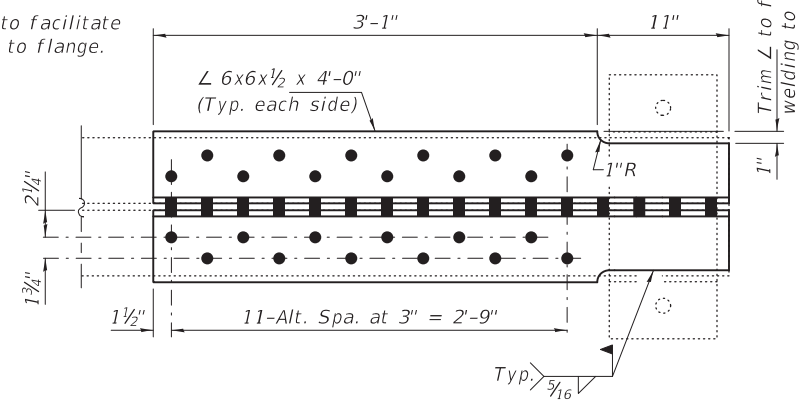
REPAIR DETAIL "J" PLAN
EAST ABUT. - BEAM 9



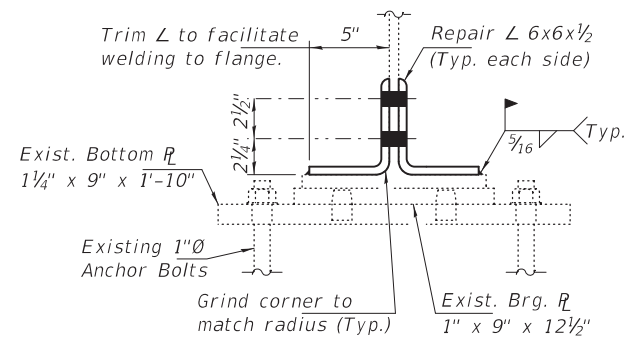
REPAIR DETAIL "I" PLAN
EAST ABUT. - BEAM 10



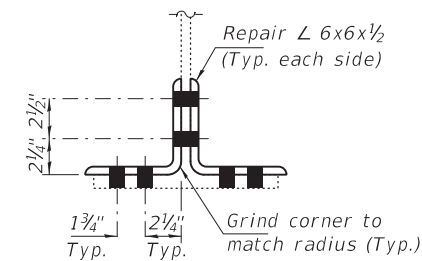
REPAIR DETAIL "H" PLAN
EAST ABUT. - BEAM 12



REPAIR DETAIL "G" PLAN
EAST ABUT. - BEAM 14



TYPICAL SECTION AT BEARING



TYPICAL SECTION THRU FLANGE

DESIGNED - VHV
 CHECKED - ATH
 DRAWN - STEFFEN
 CHECKED - VHV ATH

EXAMINED
 PASSED
 ENGINEER OF STRUCTURAL SERVICES
 ENGINEER OF BRIDGES AND STRUCTURES

DATE - JUNE 7, 2022
 REVISED -
 REVISED -

STATE OF ILLINOIS
 DEPARTMENT OF TRANSPORTATION

REPAIR DETAILS "G", "H", "I", & "J"
 SN 097-0032

SHEET NO. 6 OF 6 SHEETS

F.A.P. RTE. 857	SECTION -	COUNTY - WHITE	TOTAL SHEETS -	SHEET NO. -
CONTRACT NO.				
ILLINOIS		FED. AID PROJECT		