

BASE BID SUMMARY OF QUANTITIES				
PAY ITEM	ITEM DESCRIPTION	UNIT	QTY	
* AR108090	1/C #10 XLP -USE	FOOT	200	
* AR108760	1/C #10 GROUND	FOOT	100	
* AR110201	1" PVC DUCT, DIRECT BURY	FOOT	100	
AR150510	ENGINEER'S FIELD OFFICE	L SUM	1	
AR150520	MOBILIZATION	L SUM	1	
AR156500	EROSION CONTROL	L SUM	1	
AR162506	CLASS E FENCE - 6'	FOOT	1520	
* AR162718	ELECTRIC GATE - 18'	EACH	1	
AR209606	CRUSHED AGG. BASE COURSE - 6"	SQ YD	530	
AR401610	BITUMINOUS SURFACE COURSE	TON	185	
AR401650	BITUMINOUS PAVEMENT MILLING	SQ YD	565	
AR401655	BUTT JOINT CONSTRUCTION	SQ YD	40	
AR401921	REMOVE PAVEMENT	SQ YD	530	
AR602510	BITUMINOUS PRIME COAT	GALLON	160	
AR603510	BITUMINOUS TACK COAT	GALLON	80	
AR620520	PAVEMENT MARKING - WATERBORNE	SQ FT	430	
AR910020	ROADWAY SIGN	L SUM	1	
AR910410	PARKING BLOCK	EACH	9	
AR910415	REMOVE PARKING BLOCK	EACH	9	
AR910420	BOLLARD	EACH	4	
* SPECIALTY ITEMS				

ADDITIVE ALTERNATE #1 SUMMARY OF QUANTITIES				
PAY ITEM	ITEM DESCRIPTION	UNIT	QTY	
AS162506	CLASS E FENCE	FOOT	400	

# CONSTRUCTION PLANS FOR SPARTA COMMUNITY AIRPORT SPARTA, ILLINOIS 62286

## 100% SUBMITTAL

### IL. PROJECT: SAR-5037

# REHABILITATE AUTO PARKING LOT; IMPROVE AIRPORT DRAINAGE; INSTALL SECURITY FENCE

Sheet List Table		
Sheet No.	Sheet Index	Sheet Title
1	GI001	COVER SHEET
2	GI101	SITE PLAN
3	GC001	CONSTRUCTION ACTIVITY NOTES
4	CD101	EXISTING CONDITIONS AND REMOVALS
5	CD301	EXISTING TYPICAL SECTION
6	CP101	PROPOSED IMPROVEMENTS
7	CP301	PROPOSED TYPICAL SECTION
8	CS101	STAKING PLAN
9	CF101	PROPOSED FENCE PLAN
10	CF501	FENCING DETAILS 1
11	CF502	FENCING DETAILS 2
12	CF503	FENCING DETAILS 3
13	EL101	PROPOSED ELECTRICAL SITE PLAN
14	EL501	ELECTRICAL GATE DETAIL 1
15	EL502	ELECTRICAL GATE DETAIL 2
16	EL503	ELECTRICAL GATE DETAIL 3
17	EL504	ELECTRICAL GATE DETAIL 4
18	CM101	MARKING PLAN
19	CM501	MARKING DETAILS

**811** Know what's below. Call before you dig. COMMON GROUND ALLIANCE  
www.call811.com or Phone: 811

THE LOCATION, SIZE AND TYPE OF MATERIAL OF EXISTING UNDERGROUND UTILITIES INDICATED ON THE PLANS IS NOT REPRESENTED AS BEING ACCURATE, SUFFICIENT OR COMPLETE. IT SHALL BE THE CONTRACTOR'S RESPONSIBILITY TO DETERMINE THE ACTUAL LOCATION OF ALL SUCH FACILITIES, INCLUDING SERVICE CONNECTIONS TO UNDERGROUND UTILITIES. PRIOR TO CONSTRUCTION, THE CONTRACTOR SHALL NOTIFY THE UTILITY COMPANIES OF HIS OPERATIONAL PLANS AND SHALL OBTAIN FROM THE RESPECTIVE UTILITY COMPANIES DETAILED INFORMATION AND ASSISTANCE RELATIVE TO THE LOCATION OF THEIR FACILITIES AND THE WORKING SCHEDULE OF THE COMPANIES FOR REMOVAL OR ADJUSTMENT WHERE REQUIRED. IN THE EVENT AN UNEXPECTED UTILITY INTERFERENCE IS ENCOUNTERED DURING CONSTRUCTION, THE CONTRACTOR SHALL IMMEDIATELY NOTIFY THE UTILITY COMPANY OF JURISDICTION. THE ENGINEER SHALL ALSO BE IMMEDIATELY NOTIFIED. ANY SUCH MAINS AND SERVICES SHALL BE RESTORED TO SERVICE AT ONCE AND PAID FOR BY THE CONTRACTOR AT NO ADDITIONAL COST TO THE CONTRACT.

CALL 911 IN THE EVENT IN WHICH DAMAGE RESULTS IN THE RELEASE OF NATURAL GAS.

**DESIGN INFORMATION**

GEOMETRIC CRITERIA  
APPROACH CATEGORY GROUP: B  
TAXIWAY DESIGN GROUP: II  
PAVEMENT DESIGN CRITERIA  
AIRCRAFT SINGLE WHEEL GEAR  
DEPARTURE WEIGHT = 12,500 LBS.  
100 ANNUAL DEPARTURES

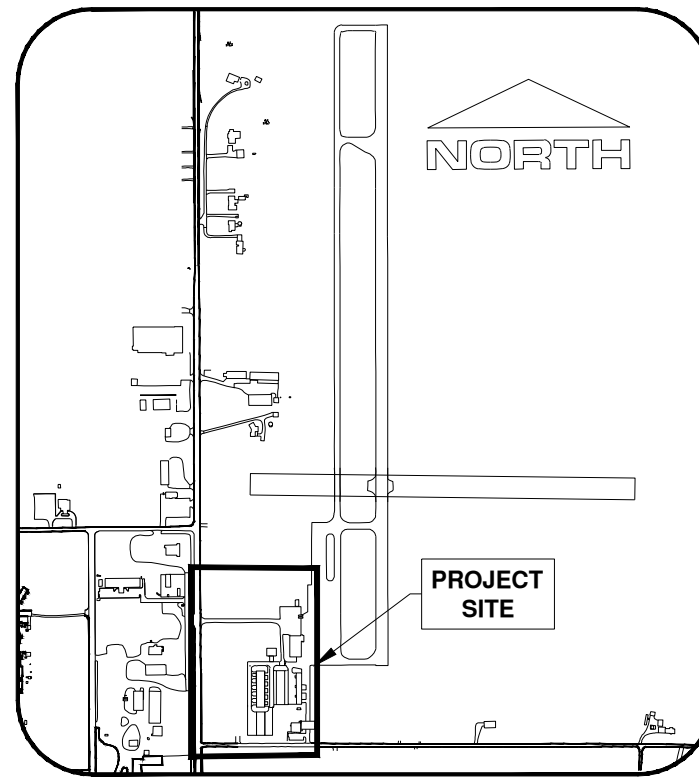
MAXIMUM EQUIPMENT HEIGHT = 25'  
GROUND FREQUENCY 123.075

SPARTA COMMUNITY AIRPORT  
TOWNSHIP: 4 SOUTH  
RANGE: 5 WEST  
SECTION: 31  
COUNTY: RANDOLPH

01/16/2026



LOCATION MAP



SITE PLAN

SPARTA COMMUNITY AIRPORT AUTHORITY  
HUNTER FIELD  
SPARTA, ILLINOIS

APPROVED *[Signature]*  
DATE 1/8/2026

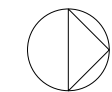
*Christoph G. Groth*  
062-056232  
LICENSED PROFESSIONAL ENGINEER OF ILLINOIS  
Exp. 11/30/2027

**CMT**

License No. 184-000613 © Copyright CMT, Inc.

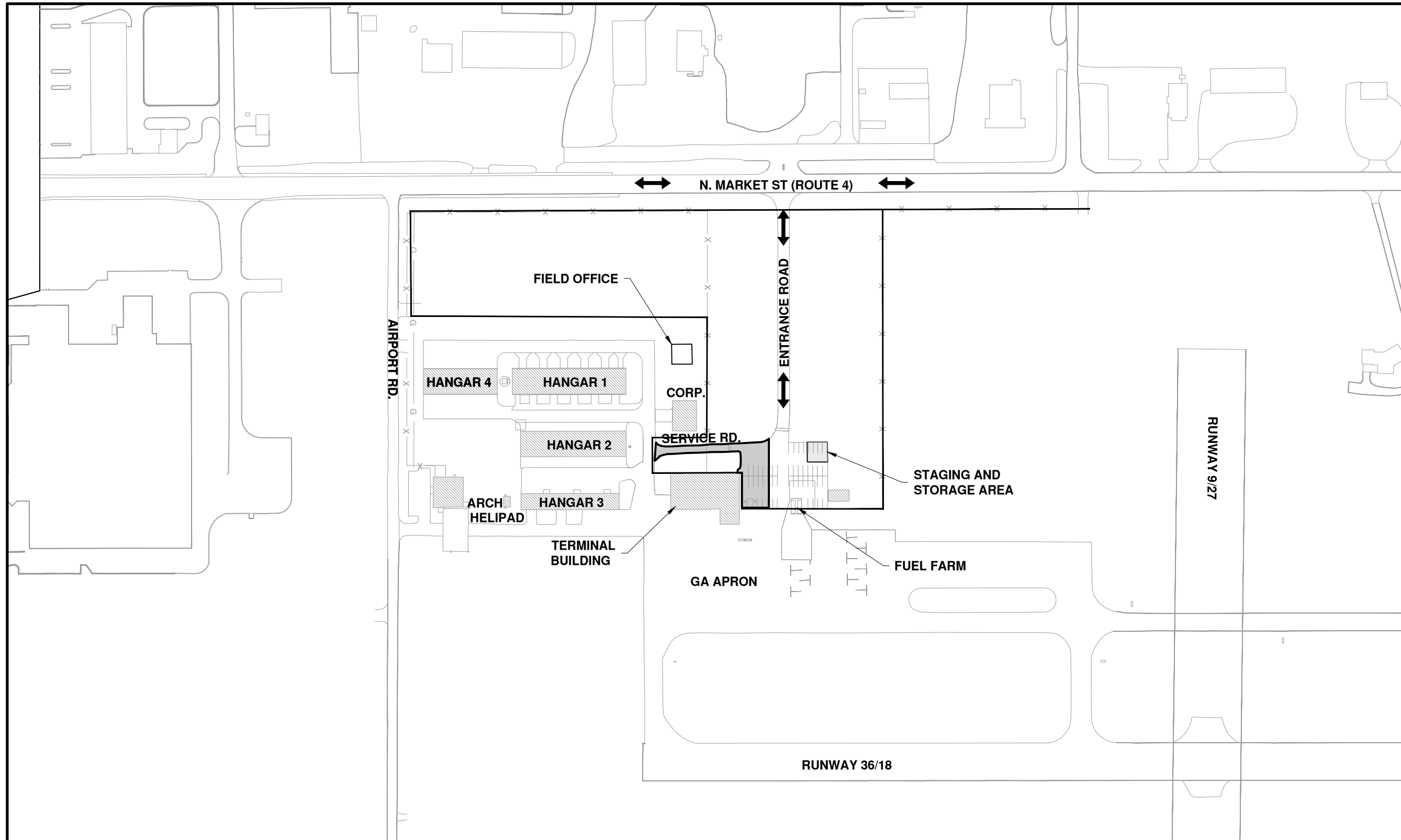
SUBMITTED BY *Christoph G. Groth*  
DATE January 8, 2026

CMT JOB NUMBER: 23005555-00



0 100' 200'

THIS BAR IS EQUAL TO 2" AT FULL SCALE (34X22).



REHABILITATE AUTO PARKING LOT; IMPROVE AIRPORT DRAINAGE; INSTALL SECURITY FENCE

OWNER



1800 N. MARKET STREET  
SPARTA COMMUNITY AIRPORT  
SPARTA, ILLINOIS 62286

MARK	DATE	DESCRIPTION

AIR PROJECT: 3-17-SGBP-##

IL. PROJECT: SAR-5037

CMT PROJECT NO: 23005555-00

CAD DWG FILE: SAR-5037-GH101.DWG

DESIGNED BY: CJF

DRAWN BY: CJF

CHECKED BY: CBG

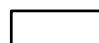



APPROVED BY: CBG

COPYRIGHT:

SHEET TITLE

**SITE PLAN**

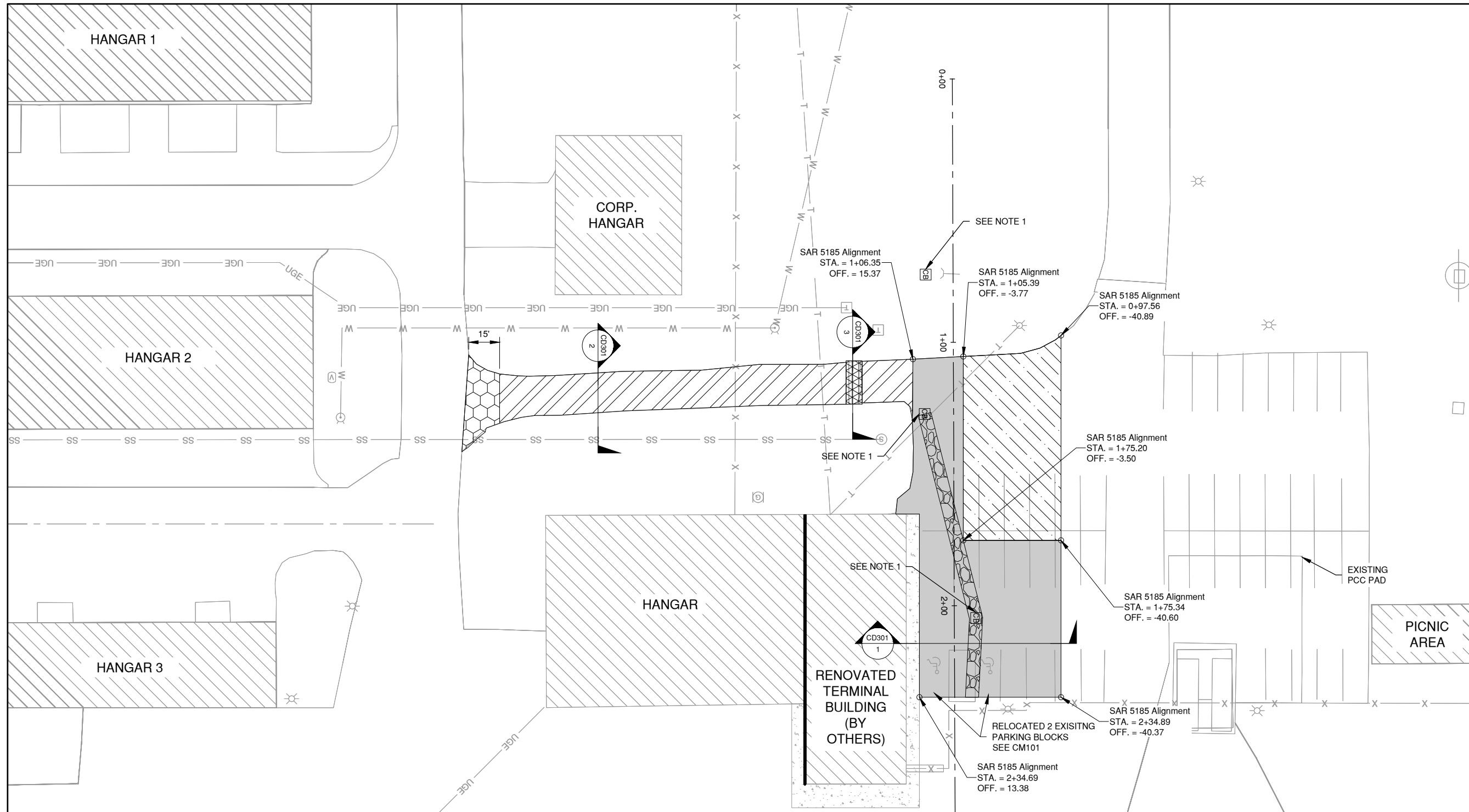
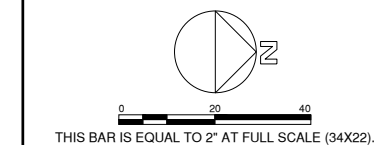
**LEGEND**

-  WORK AREA (SEE NOTES)
-  PROPOSED PAVEMENT IMPROVEMENTS
-  AIRPORT BUILDINGS
-  CONTRACTOR ACCESS ROUTE

**NOTES**

1. EQUIPMENT HEIGHTS **GREATER THAN 25'** SHALL NOT BE USED WITHOUT FAA APPROVAL, COORDINATE REQUEST THROUGH THE RESIDENT ENGINEER AND AIRPORT.
2. CONTRACTOR SHALL ACCESS OFF OF ROUTE 4 AND THROUGH THE ENTRANCE ROAD.





REHABILITATE AUTO PARKING LOT; IMPROVE AIRPORT DRAINAGE; INSTALL SECURITY FENCE

OWNER



1800 N. MARKET STREET  
SPARTA COMMUNITY AIRPORT  
SPARTA, ILLINOIS 62286

**NOTES**

- EXISTING INLETS TO REMAIN. ALL EXISTING INLETS AND CLEANOUTS SHALL BE PROTECTED DURING ALL PAVING AND MILLING OPERATIONS. NO ADJUSTMENTS WILL BE MADE.
- IT WILL BE NECESSARY FOR THE CONTRACTOR TO MAKE HIS OWN FIELD INVESTIGATION TO DETERMINE THE EXACT LOCATION OF THE UNDERGROUND UTILITIES AT CRITICAL POINTS SO AS TO AVOID ANY DAMAGE. ANY UTILITY, INCLUDING AIRFIELD ELECTRICAL, CABLE, AND LIGHTS, DAMAGED BY THE CONTRACTOR SHALL BE REPAIRED BY HIM AT HIS OWN EXPENSE IN A MANNER WHICH IS SATISFACTORY TO THE ENGINEER, THE AIRPORT, AND THE OWNER OF THE UTILITY. ANY REPAIRS THAT MUST BE MADE BY THE OWNER OF THE UTILITY SHALL HAVE THE COST REIMBURSED TO THE UTILITY BY THE CONTRACTOR. AIRFIELD LIGHTING CABLES DAMAGED BY THE CONTRACTOR SHALL BE REPAIRED BY A QUALIFIED ELECTRICIAN WITH THE COSTS TO BE BORNE BY THE CONTRACTOR.

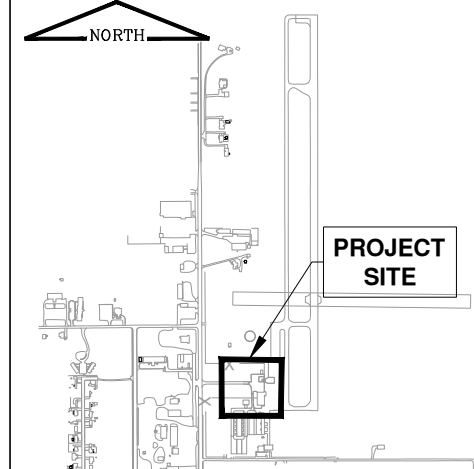
**EXISTING UTILITIES**

	GAS REGULATOR		WATER MAIN
	MANHOLE		UNDERGROUND ELECTRICAL
	LIGHT POST		EXISTING FENCE
	TRANSFORMER		EXISTING SWING GATE
	INLET		
	TELEPHONE LINE		
	SANITARY SEWER		
	STORM PIPE		

**LEGEND**

	REMOVE FULL DEPTH HMA
	REMOVE FULL DEPTH PCC AND AGGREGATE TO DEPTH OF FULL DEPTH HMA REMOVAL
	1.5" MILL & 1.5" INLAY
	1" MILL & 2" OVERLAY
	BUTT JOINT
	REMOVE AGGREGATE TO DEPTH OF ADJACENT FULL-DEPTH HMA REMOVAL (DRAINAGE WORK DONE BY OTHERS)

**KEYMAP**



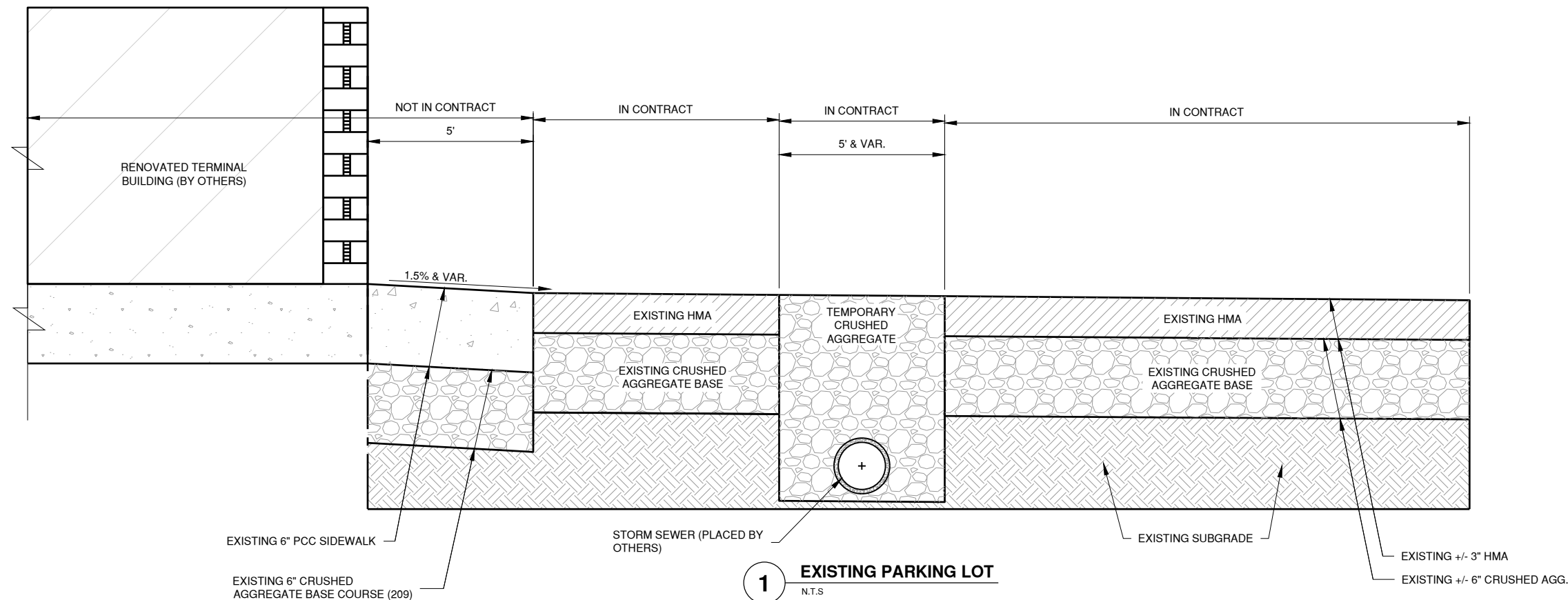
MARK	DATE	DESCRIPTION

AIR PROJECT: 3-17-SG8P-##
IL PROJECT: SAR-5037
CMT PROJECT NO: 23005555-00
CAD DWG FILE: SAR-5037-CD101.DWG
DESIGNED BY: CJF
DRAWN BY: CJF
CHECKED BY: CBG
APPROVED BY: CBG
COPYRIGHT:

**EXISTING CONDITIONS AND REMOVALS**

Path: K:\Sparta\23005555-00\_RehabParkingLot\Draw\Sheets\SAR-5037-CD101.dwg  
 Date: Wednesday, January 28, 2026 11:37:22 AM

THIS BAR IS EQUAL TO 2" AT FULL SCALE (34X22).



**1 EXISTING PARKING LOT**  
N.T.S.

REHABILITATE AUTO PARKING LOT; IMPROVE AIRPORT DRAINAGE; INSTALL SECURITY FENCE

OWNER



1800 N. MARKET STREET  
SPARTA COMMUNITY AIRPORT  
SPARTA, ILLINOIS 62286

MARK	DATE	DESCRIPTION

AIR PROJECT: 3-17-SGBP-##

IL. PROJECT: SAR-5037

CMT PROJECT NO: 23005555-00

CAD DWG FILE: SAR-5037-CD300.DWG

DESIGNED BY: CJF

DRAWN BY: CJF

CHECKED BY: CBG

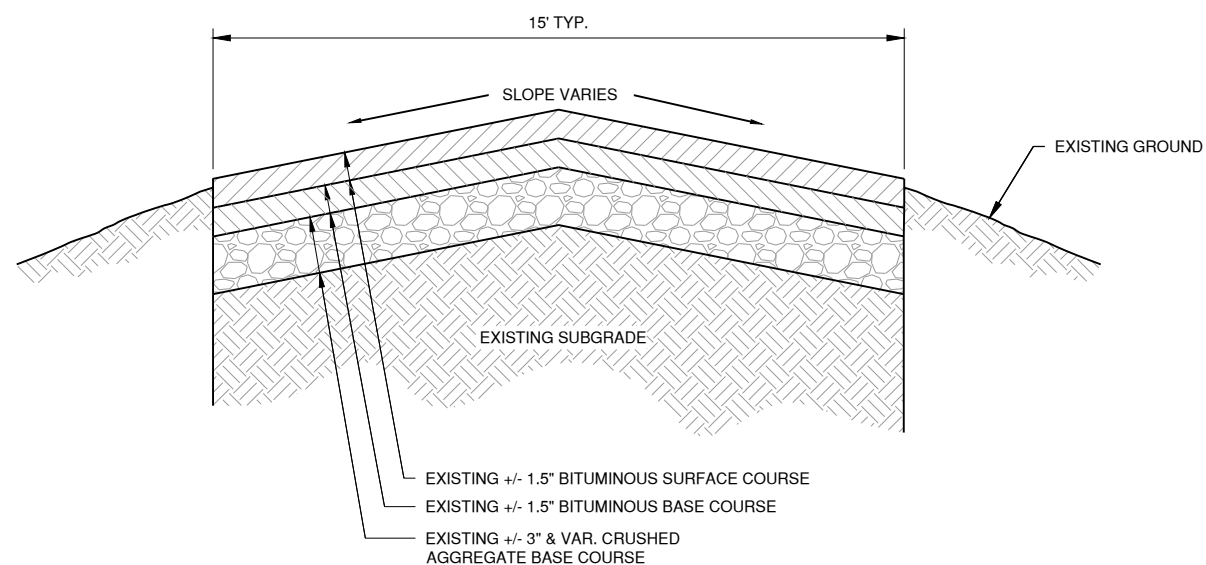
APPROVED BY: CBG

COPYRIGHT:

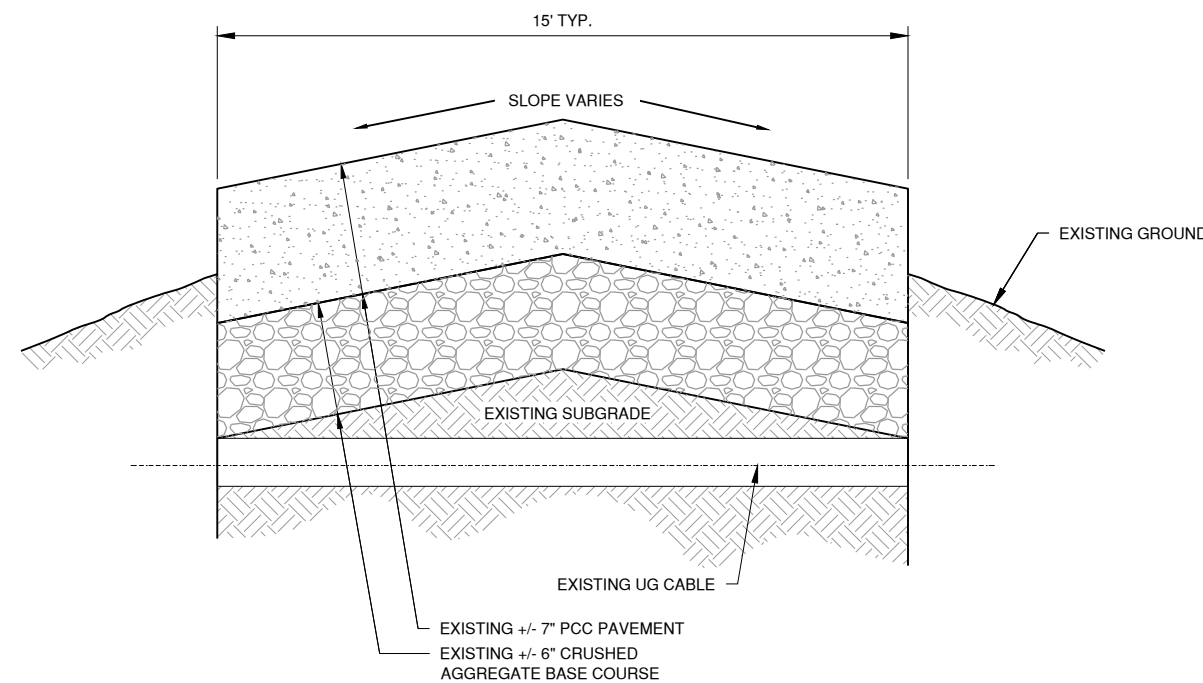
SHEET TITLE

**EXISTING TYPICAL SECTIONS**

CD301  
SHEET 5 OF 19



**2 EXISTING SERVICE ROAD**  
N.T.S.



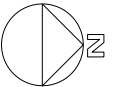
**3 EXISTING UTILITY CUT**  
N.T.S.

**NOTES**

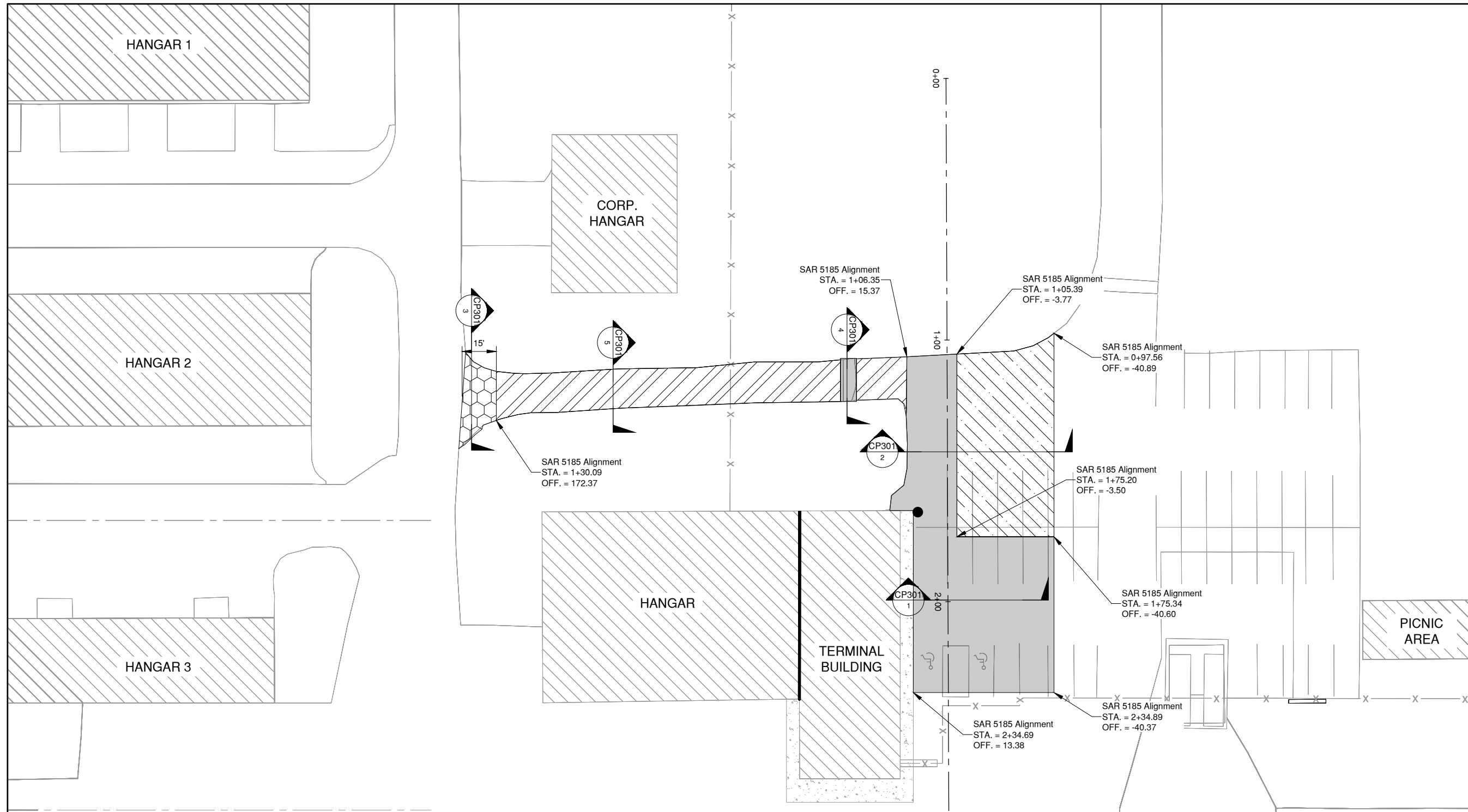
- EXISTING PAVEMENT STRUCTURES SHOWN ARE FROM AVAILABLE RECORD DRAWINGS AND ARE CONSIDERED GENERALLY REPRESENTATIVE OF THE AS-CONSTRUCTED PAVEMENT SECTION. SOME VARIABILITY IN ACTUAL PAVEMENT THICKNESS IS TO BE EXPECTED.

**NOTES**

- REMOVAL OF THE PCC WILL BE PAID FOR UNDER AR401921 REMOVE PAVEMENT.
- +/- 2" OF AGG SHALL BE REMOVED TO ALLOW FOR IDENTICAL PROPOSED PAVEMENT STRUCTURES.



THIS BAR IS EQUAL TO 2' AT FULL SCALE (34X22).



REHABILITATE AUTO PARKING LOT; IMPROVE AIRPORT DRAINAGE; INSTALL SECURITY FENCE

OWNER



1800 N. MARKET STREET  
SPARTA COMMUNITY AIRPORT  
SPARTA, ILLINOIS 62286

**NOTES**

- BOLLARD IN PARKING LOT WILL REQUIRE SAW CUTTING ASPHALT BEFORE INSTALLATION OF THE BALLARD.
- ALL EXISTING INLETS AND CLEANOUTS WILL BE PROTECTED DURING ALL PAVING AND MILLING OPERATIONS. NO ADJUSTMENTS WILL BE MADE.
- IT WILL BE NECESSARY FOR THE CONTRACTOR TO MAKE HIS OWN FIELD INVESTIGATION TO DETERMINE THE EXACT LOCATION OF THE UNDERGROUND UTILITIES AT CRITICAL POINTS SO AS TO AVOID ANY DAMAGE. ANY UTILITY, INCLUDING AIRFIELD ELECTRICAL, CABLE, AND LIGHTS, DAMAGED BY THE CONTRACTOR SHALL BE REPAIRED BY HIM AT HIS OWN EXPENSE IN A MANNER WHICH IS SATISFACTORY TO THE ENGINEER, THE AIRPORT, AND THE OWNER OF THE UTILITY. ANY REPAIRS THAT MUST BE MADE BY THE OWNER OF THE UTILITY SHALL HAVE THE COST REIMBURSED TO THE UTILITY BY THE CONTRACTOR. AIRFIELD LIGHTING CABLES DAMAGED BY THE CONTRACTOR SHALL BE REPAIRED BY A QUALIFIED ELECTRICIAN WITH THE COSTS TO BE BORNE BY THE CONTRACTOR.

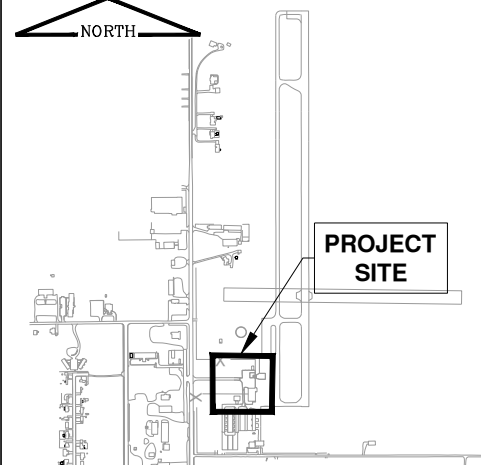
**EXISTING UTILITIES**

	GAS REGULATOR		WATER MAIN
	MANHOLE		UNDERGROUND ELECTRICAL
	LIGHT POST		EXISTING FENCE
	TRANSFORMER		
	INLET		
	TELEPHONE LINE		
	SANITARY SEWER		
	STORM PIPE		

**LEGEND**

	RECONSTRUCT PARKING LOT
	REHAB PARKING LOT - 1.5" BIT. SURFACE COURSE
	REHAB SERVICE ROAD - 2" BIT. SURFACE COURSE
	BUTT JOINT
	NEW PIPE BOLLARD

**KEYMAP**



MARK	DATE	DESCRIPTION

AIR PROJECT: 3-17-SGBP-##  
 IL. PROJECT: SAR-5037  
 CMT PROJECT NO: 23005555-00  
 CAD DWG FILE: SAR-5037-CP100.DWG  
 DESIGNED BY: CJF  
 DRAWN BY: CJF  
 CHECKED BY: CBG  
 APPROVED BY: CBG  
 COPYRIGHT:

**PROPOSED IMPROVEMENTS**

Path: K:\Sparta\A\23005555-00\_RehabParkingLot\Draw\Sheets\SAR-5037-CP100.dwg  
 Date: Wednesday, January 28, 2026 11:37:39 AM

REHABILITATE AUTO PARKING LOT; IMPROVE AIRPORT DRAINAGE; INSTALL SECURITY FENCE

OWNER



1800 N. MARKET STREET  
SPARTA COMMUNITY AIRPORT  
SPARTA, ILLINOIS 62286

MARK	DATE	DESCRIPTION

AIR PROJECT: 3-17-SGBP-##

IL. PROJECT: SAR-5037

CMT PROJECT NO: 23005555-00

CAD DWG FILE: SAR-5037-CP301.DWG

DESIGNED BY: CJF

DRAWN BY: CJF

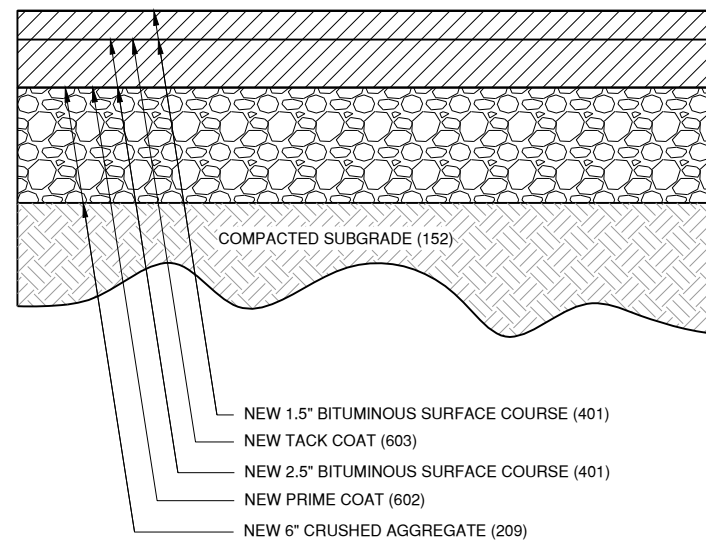
CHECKED BY: CBG

APPROVED BY: CBG

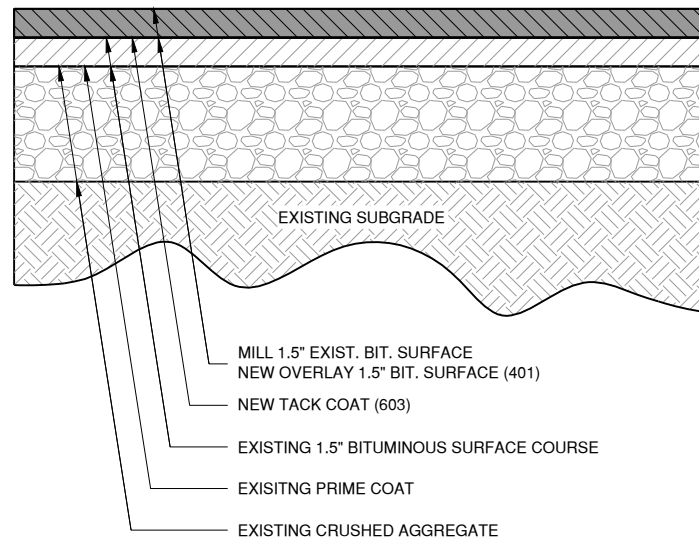
COPYRIGHT:

SHEET TITLE

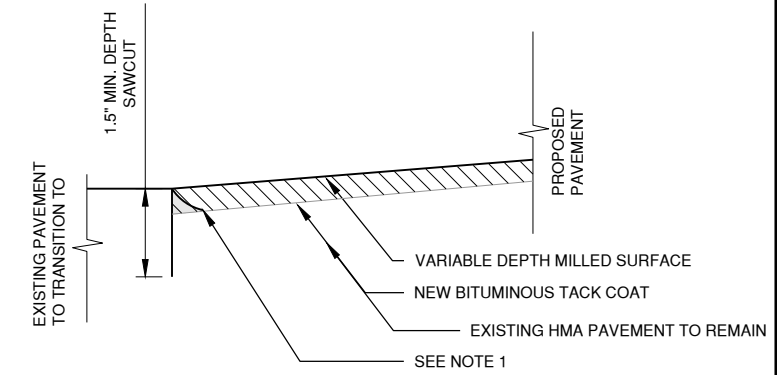
**PROPOSED TYPICAL SECTIONS**



**1 NEW PARKING LOT RECONSTRUCTION**  
N.T.S



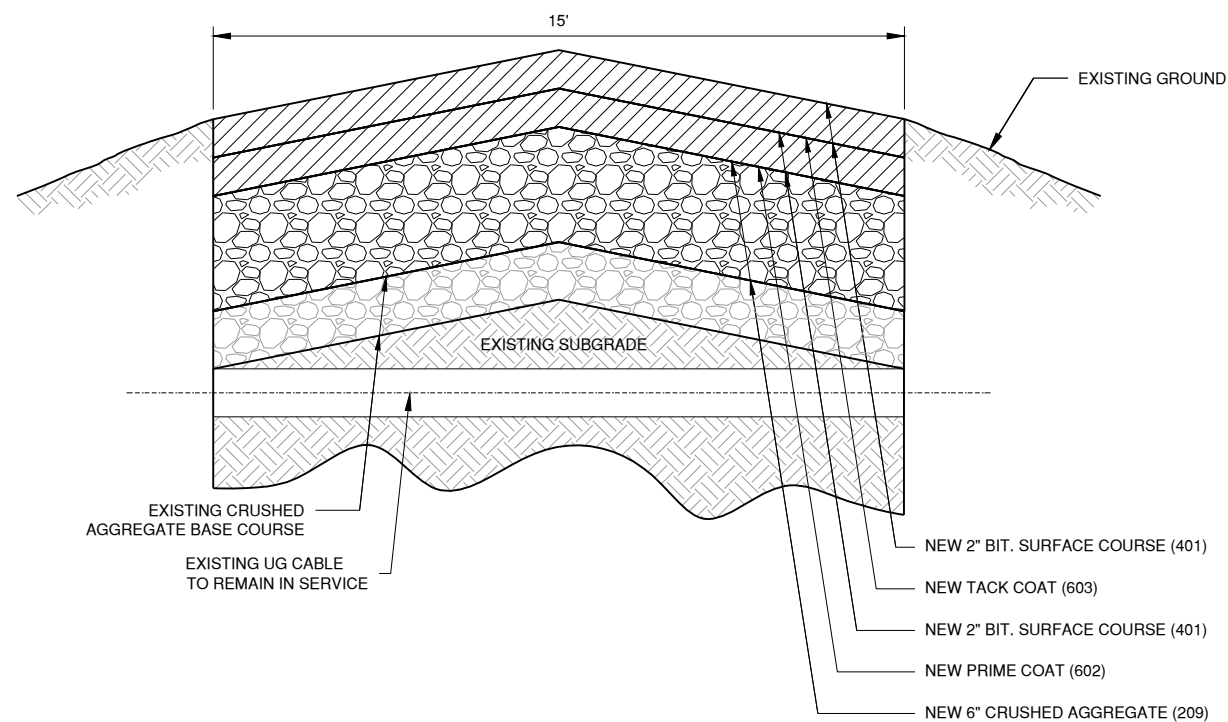
**2 NEW PARKING LOT REHABILITATION**  
N.T.S



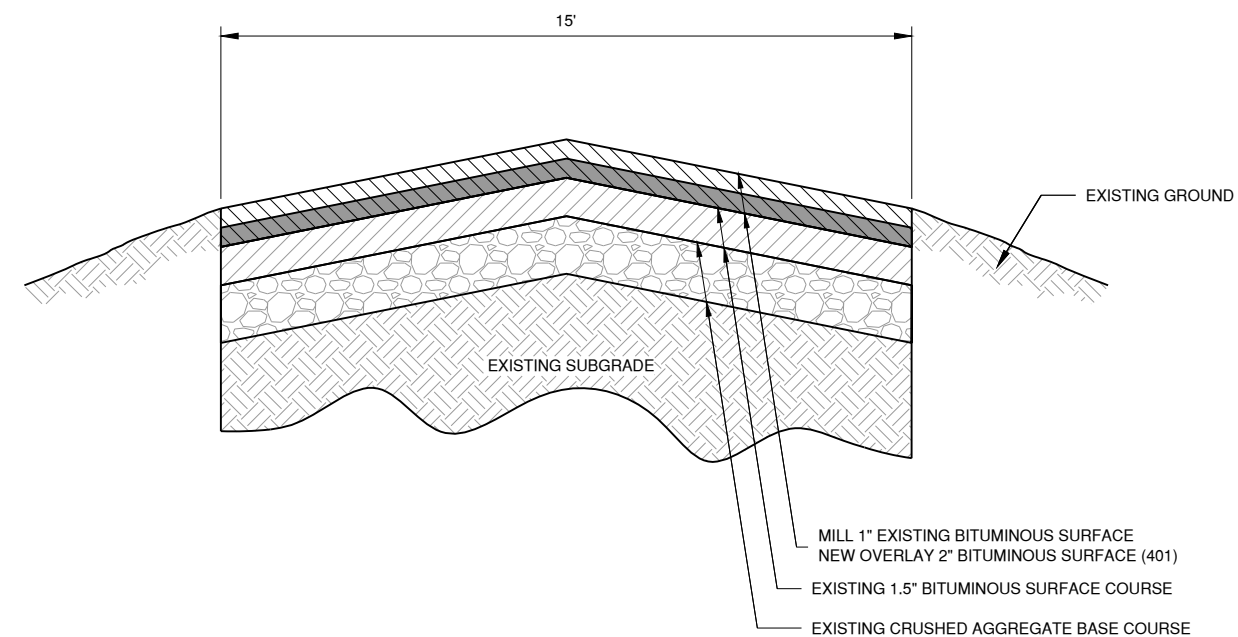
**NOTES:**

- CONTRACTOR SHALL SAW AND CHISEL ANY REMAINING ASPHALT NOT REMOVED BY THE MILL TO ACHIEVE A CLEAN, VERTICAL FACE TO THE SAWCUT.

**3 BUTT JOINT DETAIL**  
N.T.S



**4 NEW SERVICE ROAD UTILITY SECTION**  
N.T.S

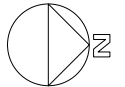


**5 PROPOSED SERVICE ROAD REHABILITATION**  
N.T.S



License No. 184-000613

CONSULTANTS



THIS BAR IS EQUAL TO 2" AT FULL SCALE (34X22).

REHABILITATE AUTO PARKING LOT; IMPROVE AIRPORT DRAINAGE; INSTALL SECURITY FENCE

OWNER



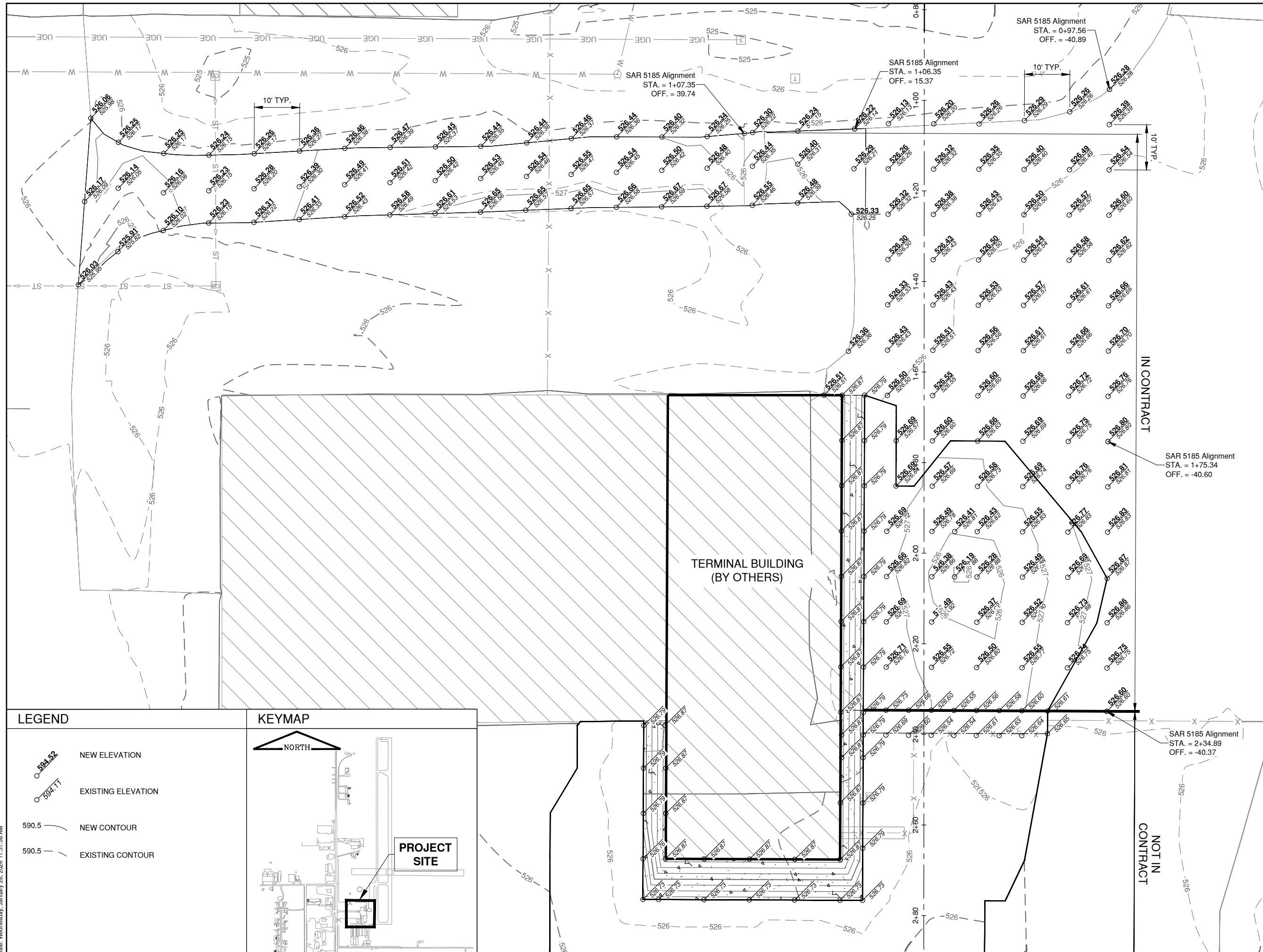
1800 N. MARKET STREET  
SPARTA COMMUNITY AIRPORT  
SPARTA, ILLINOIS 62286

MARK | DATE | DESCRIPTION

AIR PROJECT:	3-17-SGBP-##
IL PROJECT:	SAR-5037
CMT PROJECT NO:	23005555-00
CAD DWG FILE:	SAR-5037-CS100.DWG
DESIGNED BY:	CJF
DRAWN BY:	CJF
CHECKED BY:	CBG
APPROVED BY:	CBG
COPYRIGHT:	

SHEET TITLE  
**STAKING PLAN**

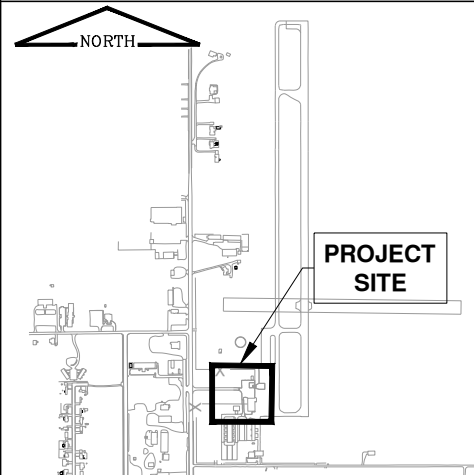
CS101  
SHEET 8 OF 19



**LEGEND**

- NEW ELEVATION
- EXISTING ELEVATION
- NEW CONTOUR
- EXISTING CONTOUR

**KEYMAP**



Path: K:\Sparta\23005555-00\_RehabParkingLot\Draw\Sheets\SAR-5037-CS100.dwg  
Date: Wednesday, January 28, 2026 11:37:58 AM

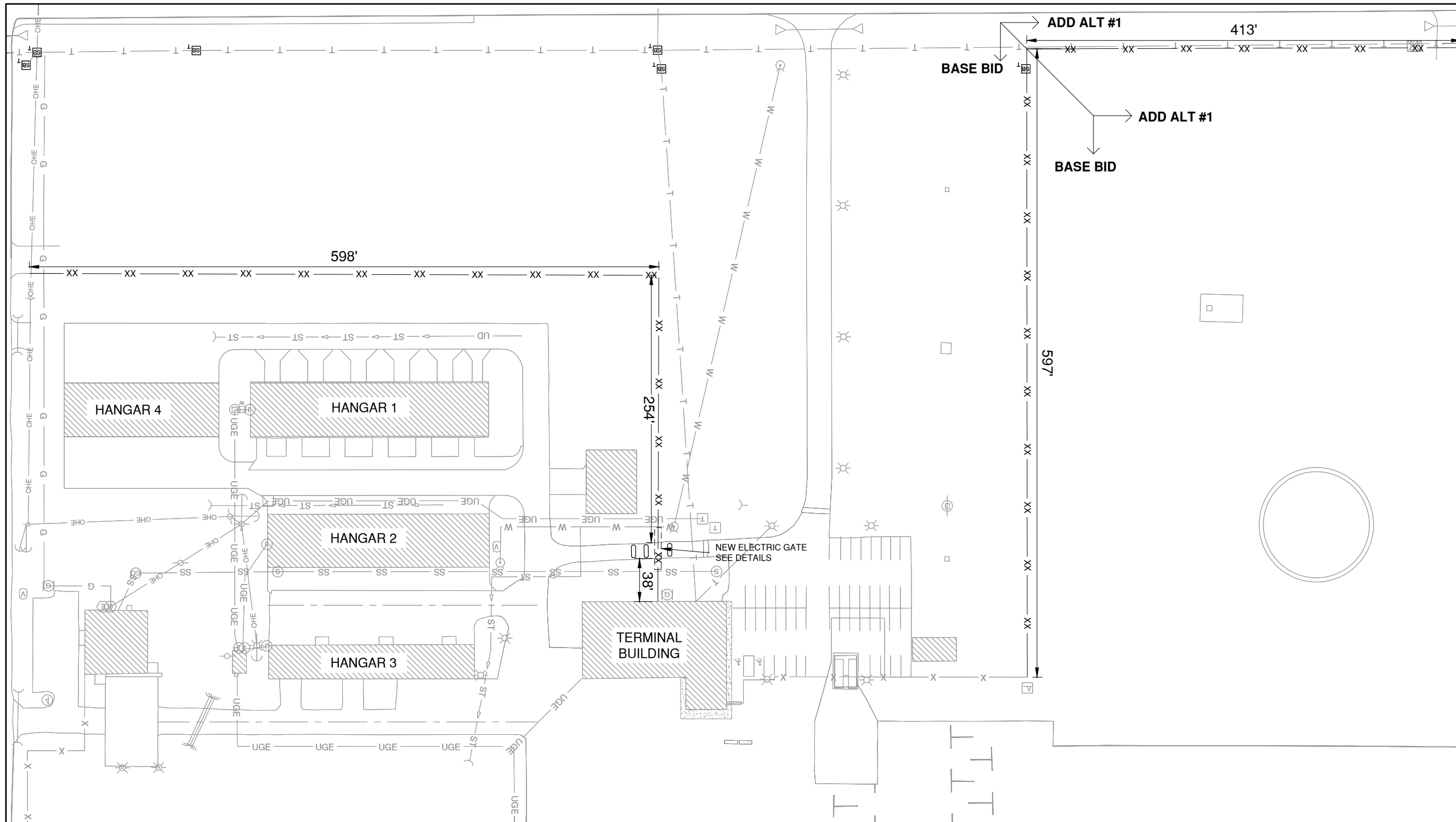


License No. 184-000613

CONSULTANTS



THIS BAR IS EQUAL TO 2" AT FULL SCALE (34X22).



REHABILITATE AUTO PARKING LOT; IMPROVE AIRPORT DRAINAGE; INSTALL SECURITY FENCE

OWNER



1800 N. MARKET STREET  
SPARTA COMMUNITY AIRPORT  
SPARTA, ILLINOIS 62286

NOTES

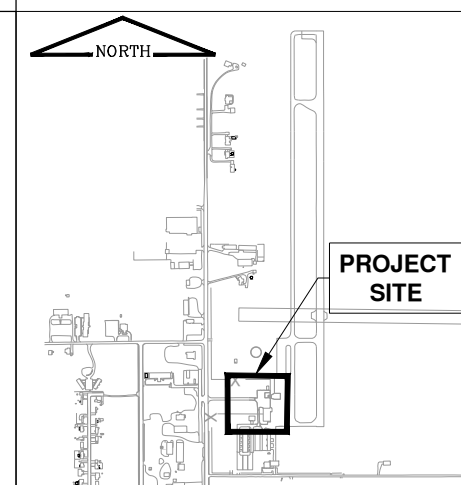
- IT WILL BE NECESSARY FOR THE CONTRACTOR TO MAKE HIS OWN FIELD INVESTIGATION TO DETERMINE THE EXACT LOCATION OF THE UNDERGROUND UTILITIES AT CRITICAL POINTS SO AS TO AVOID ANY DAMAGE. ANY UTILITY, INCLUDING AIRFIELD ELECTRICAL, CABLE, AND LIGHTS, DAMAGED BY THE CONTRACTOR SHALL BE REPAIRED BY HIM AT HIS OWN EXPENSE IN A MANNER WHICH IS SATISFACTORY TO THE ENGINEER, THE AIRPORT, AND THE OWNER OF THE UTILITY. ANY REPAIRS THAT MUST BE MADE BY THE OWNER OF THE UTILITY SHALL HAVE THE COST REIMBURSED TO THE UTILITY BY THE CONTRACTOR. AIRFIELD LIGHTING CABLES DAMAGED BY THE CONTRACTOR SHALL BE REPAIRED BY A QUALIFIED ELECTRICIAN WITH THE COSTS TO BE BORNE BY THE CONTRACTOR.

EXISTING UTILITIES

- GAS REGULATOR
- MANHOLE
- LIGHT POST
- TRANSFORMER
- INLET
- TELEPHONE LINE
- SANITARY SEWER
- STORM PIPE
- WATER MAIN
- UNDERGROUND ELECTRICAL
- EXISTING FENCE

LEGEND

- NEW CLASS E FENCE- 6' W/ BARBED WIRE
- NEW ELECTRIC SLIDE GATE
- REMOVE EXISTING FENCE
- ADD ALT LIMITS



MARK | DATE | DESCRIPTION

AIR PROJECT:	3-17-SGBP-##
IL PROJECT:	SAR-5037
CMT PROJECT NO:	23005555-00
CAD DWG FILE:	SAR-CF100.DWG
DESIGNED BY:	CJF
DRAWN BY:	CJF
CHECKED BY:	CBG
APPROVED BY:	CBG
COPYRIGHT:	

PROPOSED FENCE PLAN

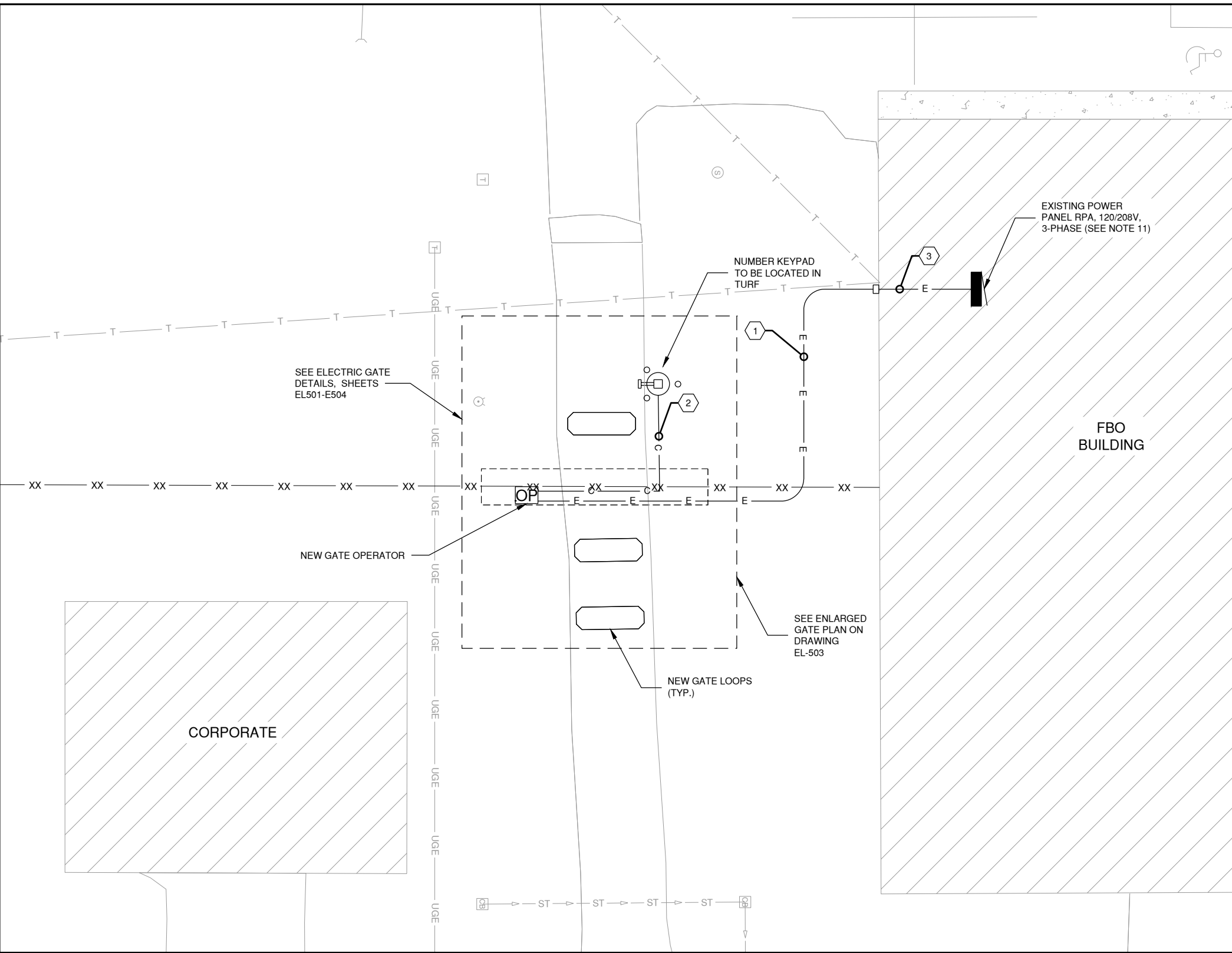
Path: K:\Sparta\A\23005555-00\_RehabParkingLot\Draw\Sheets\SAR-CF100.dwg  
Date: Wednesday, January 28, 2026 11:38:12 AM







Path: K:\Sparta\Ag\23005555-00\_RehabParking\Draw\Sheets\SAR-5037\_EL100.dwg  
 Date: Wednesday, January 28, 2026 11:38:40 AM



**NOTES**

- ALL ELECTRICAL WORK SHALL COMPLY WITH THE LATEST ADOPTED EDITION OF THE NATIONAL ELECTRICAL CODE (NFPA 70), THE NATIONAL FIRE CODES, THE AMERICANS WITH DISABILITIES ACT, AND ALL LOCAL CODES.
- ALL CONDUCTORS SHALL BE COPPER WITH 600V INSULATION, WHERE NO TYPE IS IDENTIFIED ON THE PLANS, IT SHALL BE THWN WITH A MINIMUM SIZE OF #12 AWG.
- WHERE CABLES ARE REQUIRED TO PASS THROUGH A FIRE RATED WALL, FLOOR, OR CEILING THEY SHALL BE SEALED WITH 3M FIRE STOP OR APPROVED EQUAL. THE APPROVED FIRE STOP METHOD SHALL COMPLY WITH NEC ARTICLE 300.23 AND SHALL BE UL LISTED UNDER "THROUGH-PENETRATION FIRE TOP SYSTEM (XHEZ)" IN THE UL FIRE RESISTANCE DIRECTORY. PROVIDE A MINIMUM OF 1" EMT THROUGH WALL PENETRATIONS.
- EXTERIOR BURIED CONDUITS IN TURF SHALL BE A MINIMUM OF 30" BELOW FINISHED GRADE.
- THE CONTRACTOR SHALL OBTAIN AND PAY FOR ALL REQUIRED PERMITS, LICENSES, INSPECTIONS, FEES, AND APPROVALS.
- THE CONTRACTOR SHALL PROVIDE FOR ALL LABOR, MATERIALS, AND EQUIPMENT TO INSTALL THE NEW ACCESS GATE AS INDICATED ON THE DRAWINGS. ITEMS NOT SHOWN, BUT NECESSARY FOR COMPLETION OF THE WORK SHALL BE INCLUDED.
- THE LOCATIONS OF UTILITIES SHOWN ON THE PLANS ARE APPROXIMATE AND SHALL NOT BE SCALED FOR EXACT LOCATIONS. ALL UTILITIES MIGHT NOT BE SHOWN. IT SHALL BE THE RESPONSIBILITY OF THE CONTRACTOR TO CONTACT THE APPROPRIATE UTILITY/AGENCY PRIOR TO STARTING THE WORK FOR THE LOCATION OF EXISTING UTILITIES AND TO ALL THEM TIME TO PROPERLY LOCATE ALL UTILITIES.
- ALL EXISTING SYSTEM AND UTILITIES TO REMAIN SHALL BE PROTECTED FROM DAMAGE. THE CONTRACTOR SHALL BE RESPONSIBLE FOR ANY DAMAGED SYSTEM OR UTILITIES AND SHALL REPLACE OR MAKE REPAIRS IMMEDIATELY, AT THEIR OWN EXPENSE, IN ACCORDANCE WITH THE AUTHORITY, AGENCY, OR UTILITY HAVING JURISDICTION.
- DEWATERING FOR THE INSTALLATION OF STRUCTURES, FOUNDATIONS, AND CONDUITS IS INCIDENTAL TO THE RESPECTIVE PAY ITEM.
- BY SUBMITTING A BID, THE CONTRACTOR ASSURES THE OWNER THAT THE PRODUCT(S) PROVIDED ARE NOT END OF PRODUCT LINE ITEMS AND THAT SPARE PARTS SHALL BE AVAILABLE TO THE OWNER FOR A PERIOD OF AT LEAST 10 YEARS BEYOND THE WARRANTY PERIOD.
- CONTRACTOR SHALL INSTALL (1) 20A, 2-POLE CIRCUIT BREAKER IN EXISTING POWER PANEL FOR NEW GATE CIRCUIT.

**LEGEND**

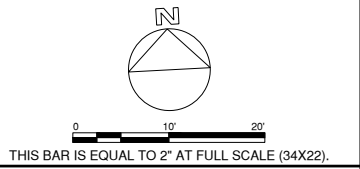
- T — EXISTING TELEPHONE LINE
- UGE — EXISTING UNDERGROUND ELECTRICAL
- X — EXISTING FENCE
- OP PROPOSED ELECTRIC GATE OPERATOR
- XX PROPOSED ELECTRIC SLIDE GATE
- E — PROPOSED ELECTRICAL CONDUIT
- C — PROPOSED ELECTRICAL COMMUNICATION CONDUIT
- XX — PROPOSED FENCE
- ○ ○ PROPOSED KEYPAD AND BOLLARDS (3 TOTAL)

**CABLE & CONDUIT LEGEND**

- ① 2-#10 (XLP USE-2), 1-#10 GND IN 1" PVC SCH 80 CONDUIT FOR GATE OPERATOR.
- ② 4 #10 OR AS REQUIRED BY MANUFACTURER IN 1" PVC SCH 80 CONDUIT FOR KEYPAD.
- ③ 2-#10 (XLP USE-2), 1-#10 GND IN 1" RGS CONDUIT ATTACHED TO STRUCTURE.



License No. 184-000613  
 CONSULTANTS



REHABILITATE AUTO PARKING LOT; IMPROVE AIRPORT DRAINAGE; INSTALL SECURITY FENCE



1800 N. MARKET STREET  
 SPARTA COMMUNITY AIRPORT  
 SPARTA, ILLINOIS 62286

MARK	DATE	DESCRIPTION

AIR PROJECT:	3-17-SGBP-##
IL PROJECT:	SAR-5037
CMT PROJECT NO:	23005555-00
CAD DWG FILE:	SAR-5037-EL100.DWG
DESIGNED BY:	FPY
DRAWN BY:	FPY
CHECKED BY:	AB
APPROVED BY:	AB
COPYRIGHT:	

SHEET TITLE  
**PROPOSED ELECTRICAL SITE PLAN**  
 EL101  
 SHEET 13 OF 19

**GATE SCHEDULE**

GATE LOCATION	OPENING WIDTH	TYPE	ENTER CONTROL	EXIT CONTROL	POWER	NEW GATE	CAMERAS	NOTES
SERVICE ROAD	18'	VEHICLE GATE	NUMBER KEYPAD	EXIT LOOP	1 HP, 240V, 1 PH	ELECTRIC SLIDE GATE	NO	

REHABILITATE AUTO PARKING LOT; IMPROVE AIRPORT DRAINAGE; INSTALL SECURITY FENCE

OWNER

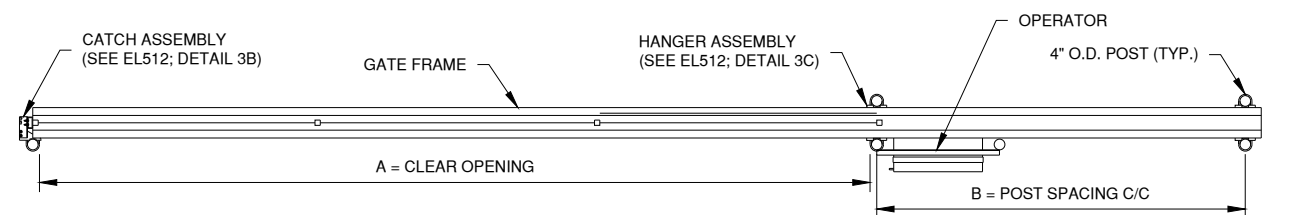


1800 N. MARKET STREET  
SPARTA COMMUNITY AIRPORT  
SPARTA, ILLINOIS 62286

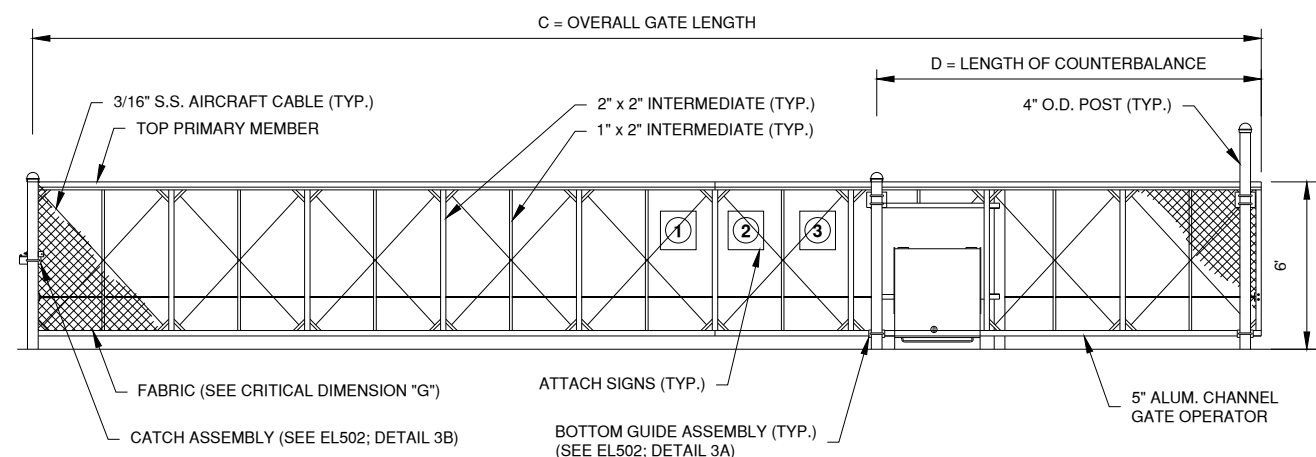
MARK	DATE	DESCRIPTION

AIR PROJECT: 3-17-SGBP-##  
IL PROJECT: SAR-5037  
CMT PROJECT NO: 23005555-00  
CAD DWG FILE: SAR-5037-EL500.DWG  
DESIGNED BY: FPY  
DRAWN BY: FPY  
CHECKED BY: AB  
APPROVED BY: AB  
COPYRIGHT:

SHEET TITLE  
**ELECTRICAL GATE  
DETAIL 1**



**PLAN**



**ELEVATION**

**1 ELECTRICAL GATE**  
N.T.S



**2 WARNING SIGN**  
N.T.S

**UL 235 COMPLIANCE NOTES**

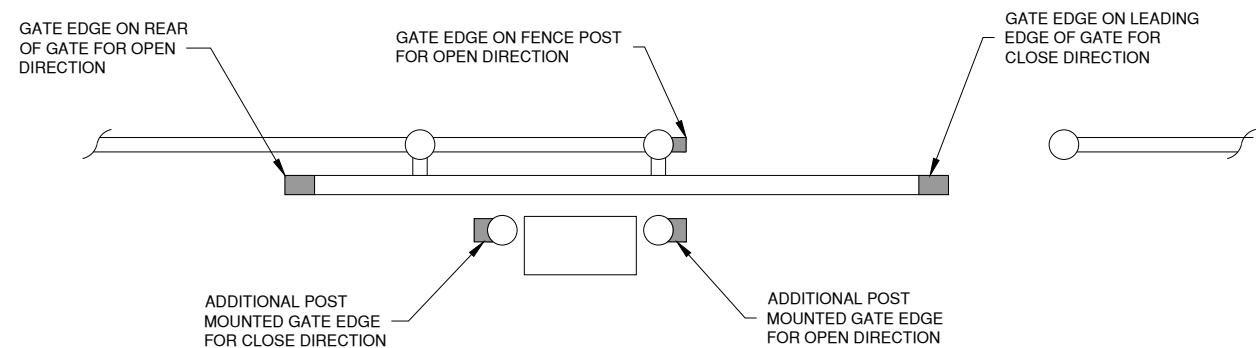
- GATE INSTALLATION SHALL COMPLY WITH ALL REQUIREMENTS OF UL 235, INCLUDING, BUT NOT LIMITED TO:
- ALL OPENINGS OF THE SLIDE GATE ARE GUARDED OR SCREENED FROM THE BOTTOM OF THE GATE TO A MINIMUM OF 4 FEET ABOVE GROUND TO OPENINGS ANYWHERE IN THE GATE, AND IN THAT PORTION OF THE ADJACENT FENCE THAT THE GATE COVERS IN THE OPEN POSITION.
  - ALL EXPOSED PINCH POINTS ARE ELIMINATED OR GUARDED AND GUARDING IS SUPPLIED FOR ALL EXPOSED ROLLERS.
  - A WARNING SIGN (SEE DETAIL, THIS SHEET) MUST BE AFFIXED TO BOTH SIDES OF THE SLIDE GATE.

CANTILEVER SLIDE GATE CRITICAL DIMENSION CHART		
A	CLEAR OPENING	18'-0"
B	COUNTERBALANCE POST SPACING C/C	9'-1"
C	OVERALL GATE LENGTH	28'-0"
D	COUNTERBALANCE LENGTH	10'-0"
E	NOMINAL HEIGHT	6'-0"
F	POST HEIGHT	11'-6"
G	FABRIC HEIGHT	6'-0"

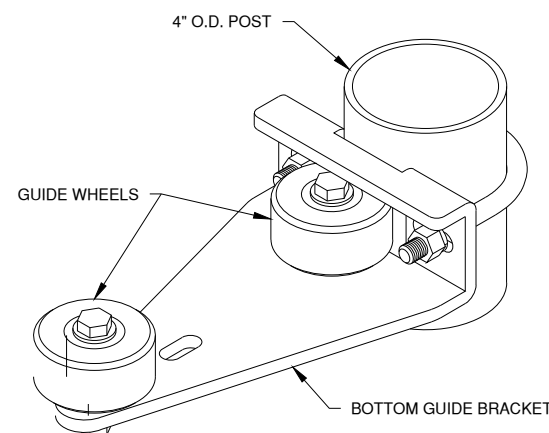
**NOTES**

- CANTILEVERED GATE SHALL BE SUFFICIENTLY RIGID TO WITHSTAND FLEXING OR BENDING DURING WINDY CONDITIONS. CONTRACTOR SHALL PROVIDE STIFFENERS, STRUCTURAL SHAPES IN EXCESS OF THE MINIMUM SPECIFIED DIMENSIONS OR ADDITIONAL ROLLERS AND POSTS SUFFICIENT TO PREVENT DISPLACEMENT OF THE GATE BY WIND OR BY UNAUTHORIZED PERSONNEL.
- CONTRACTOR SHALL PROVIDE AND INSTALL GATE AS COMPLETE WORKING UNIT. THE GATE WORK SHALL INCLUDE, BUT NOT BE LIMITED TO: GATE, OPERATOR, DIGITAL CODE CONTROL AND POWER CABLES, CONDUIT, TRENCHING, CIRCUIT BREAKERS, AND ALL CONNECTIONS, LABOR AND MATERIALS NECESSARY TO COMPLETE OPERATION.
- LOCATION OF THE GATE OPERATOR SHALL BE AS RECOMMENDED BY THE MANUFACTURER.
- PIPE BOLLARDS SHALL BE INSTALLED AT LOCATIONS SHOWN IN PLAN VIEW.
- THE FABRIC TYPE AND FINISH OF THE GATE, MATCH WITH PROPOSED FENCE OR AS DIRECTED BY THE ENGINEER.
- ALL SLIDING GATES SHALL HAVE ALL ROLLERS ENCLOSED IN STEEL OR PLASTIC SHROUDS TO PREVENT ACCIDENTAL INJURY.
- CONTRACTOR SHALL FURNISH AND INSTALL ALL SIGNS AS INDICATED ON THE PLANS AS WELL AS INSTALL OBSTRUCTION SENSOR.

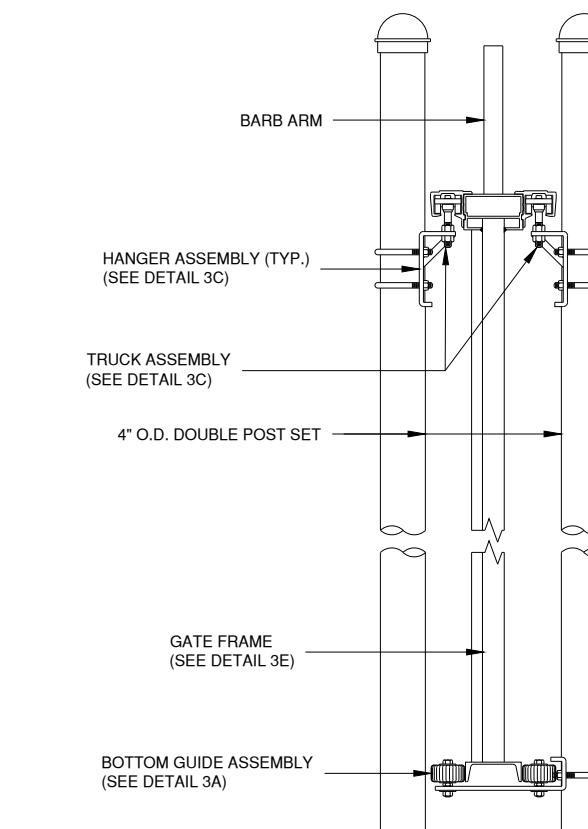
LOCATIONS, DETAILS AND CHARACTER OF EQUIPMENT SHOWN ON THIS SHEET IS GENERIC. EQUIPMENT LOCATIONS SHALL BE AS RECOMMENDED BY THE EQUIPMENT MANUFACTURER.



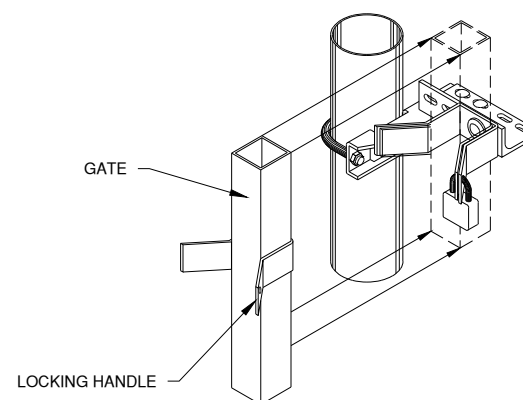
**1 SECONDARY GATE OPERATOR PROTECTION CONTACT SENSORS**  
N.T.S



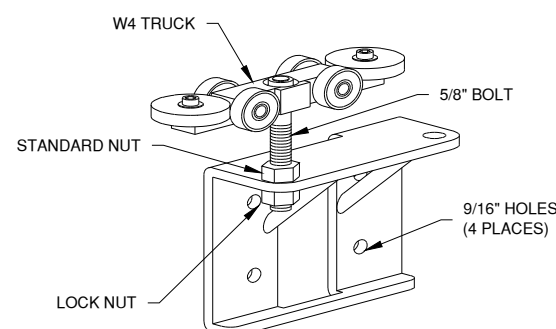
**3A BOTTOM GUIDE**  
N.T.S



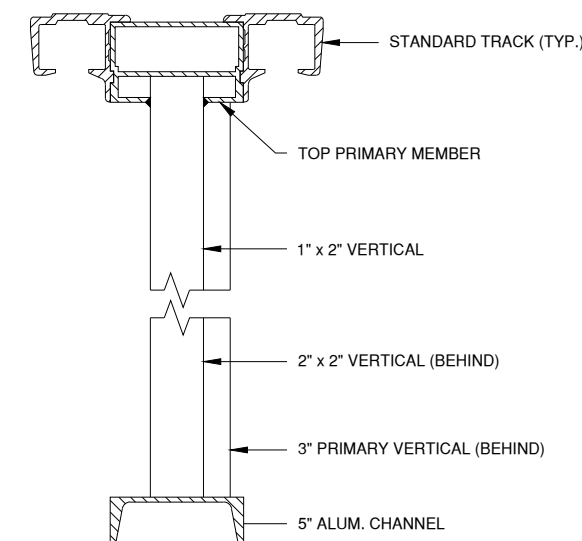
**3D ASSEMBLY SECTION**  
N.T.S



**3B CATCH ASSEMBLY**  
N.T.S



**3C GATE HANGER ASSEMBLY**  
N.T.S



**3E GATE FRAME SECTION**  
N.T.S

REHABILITATE AUTO PARKING LOT; IMPROVE AIRPORT DRAINAGE; INSTALL SECURITY FENCE

OWNER



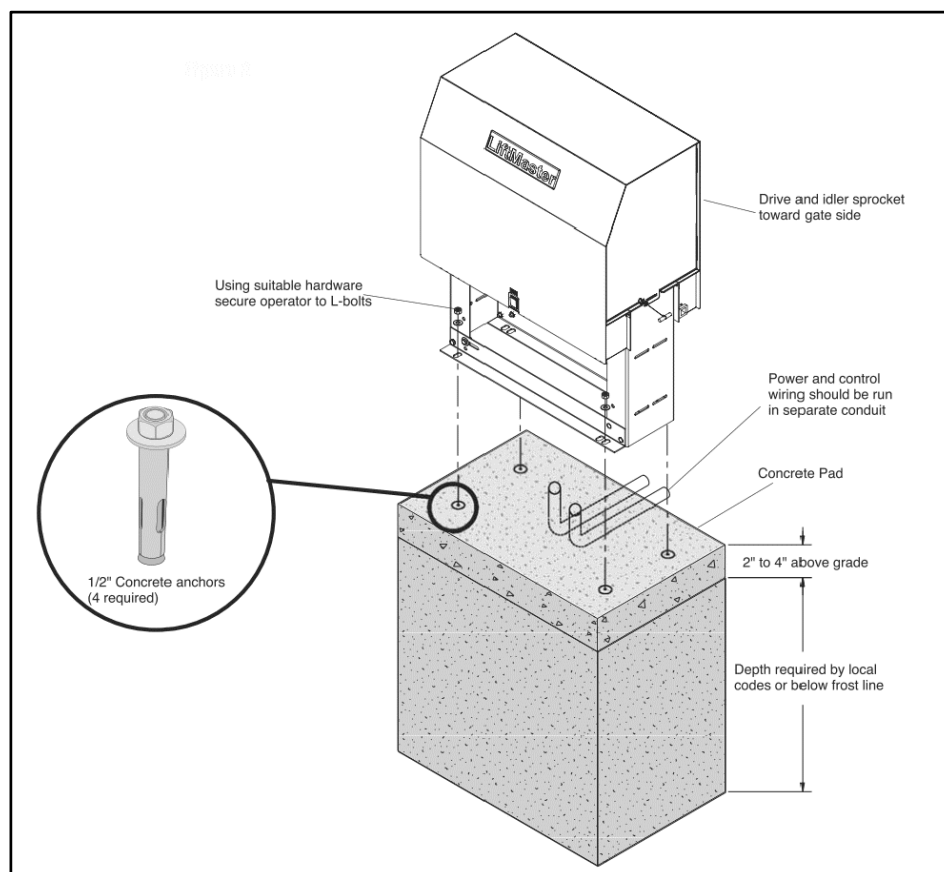
1800 N. MARKET STREET  
SPARTA COMMUNITY AIRPORT  
SPARTA, ILLINOIS 62286

MARK	DATE	DESCRIPTION

AIR PROJECT: 3-17-SGBP-##  
IL PROJECT: SAR-5037  
CMT PROJECT NO: 23005555-00  
CAD DWG FILE: SAR-5037-EL500.DWG  
DESIGNED BY: FPY  
DRAWN BY: FPY  
CHECKED BY: AB  
APPROVED BY: AB  
COPYRIGHT:

SHEET TITLE  
**ELECTRICAL GATE  
DETAIL 2**

EL502  
SHEET 15 OF 19



**2 GATE OPERATOR FOUNDATION**  
N.T.S

1. GATE OPERATOR FOUNDATION AND INSTALLATION IS SHOWN FOR INFORMATION ONLY. CONTRACTOR SHALL COORDINATE WITH GATE MANUFACTURER

**3 CANTILEVER SLIDE GATE DETAILS**  
N.T.S







