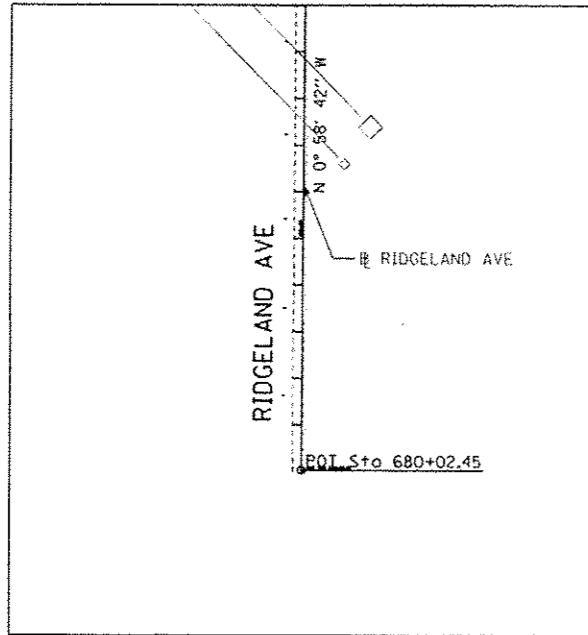


INSET B - MATCHLINE STA. 690+00



STUENKEL RD DATA

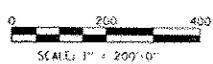
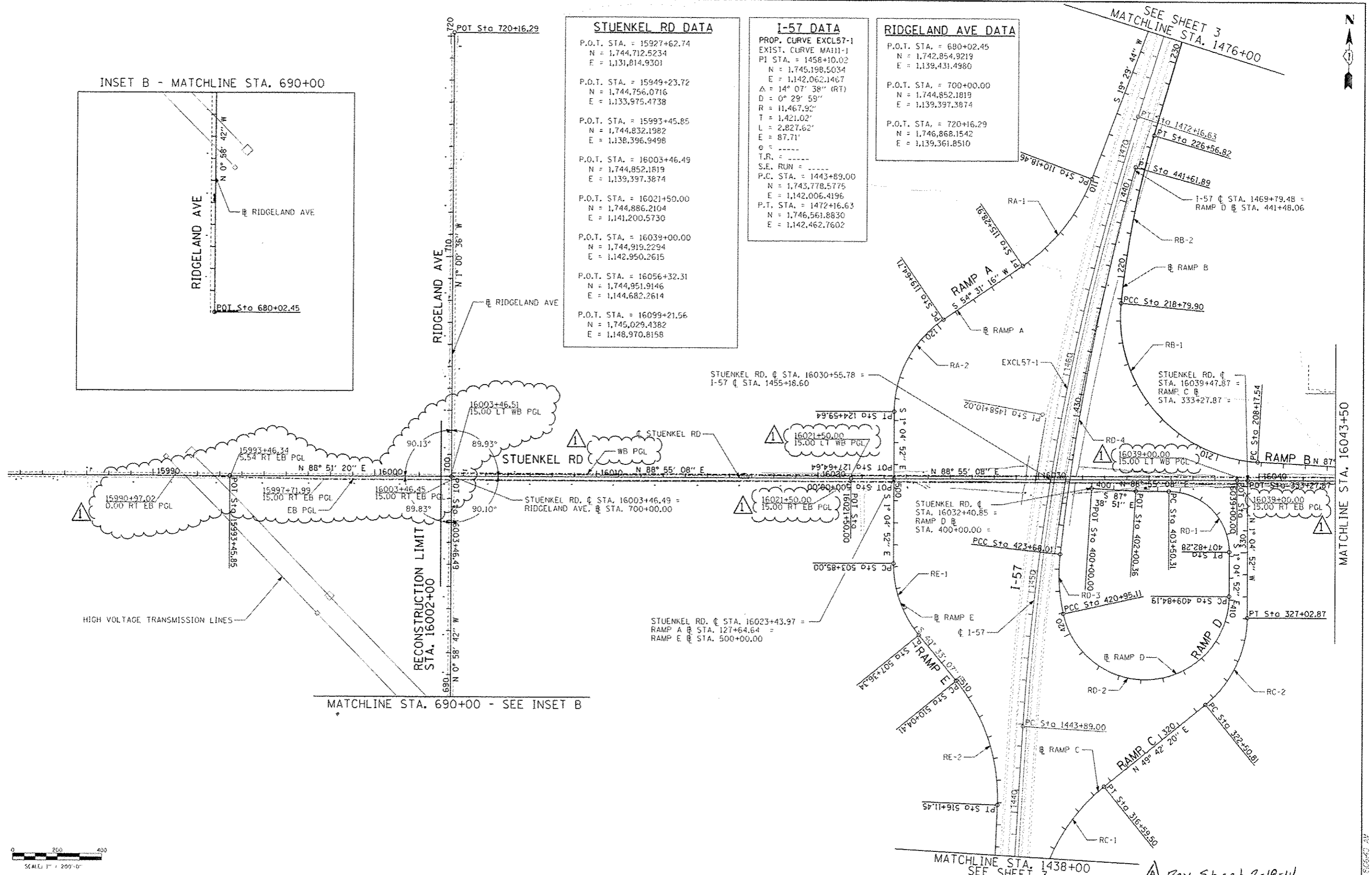
P.O.T. STA. = 15927+62.74 N = 1,744,712.5234 E = 1,131,814.9301
P.O.T. STA. = 15949+23.72 N = 1,744,756.0716 E = 1,133,975.4738
P.O.T. STA. = 15993+45.85 N = 1,744,832.1982 E = 1,138,396.9498
P.O.T. STA. = 16003+46.49 N = 1,744,852.1819 E = 1,139,397.3874
P.O.T. STA. = 16021+50.00 N = 1,744,886.2104 E = 1,141,200.5730
P.O.T. STA. = 16039+00.00 N = 1,744,919.2294 E = 1,142,950.2615
P.O.T. STA. = 16056+32.31 N = 1,744,951.9146 E = 1,144,682.2614
P.O.T. STA. = 16099+21.56 N = 1,745,029.4382 E = 1,148,970.8158

I-57 DATA

PROP. CURVE EXCL57-1 EXIST. CURVE MA111-1 PI STA. = 1458+10.02 N = 1,745,198.5034 E = 1,142,062.1467 Δ = 14° 07' 38" (RT) D = 0° 29' 59" R = 11,467.92' T = 1,421.02' L = 2,827.62' E = 87.71' C = ----- T.R. = ----- S.E. RUN = ----- P.C. STA. = 1443+89.00 N = 1,743,778.5775 E = 1,142,006.4196 P.T. STA. = 1472+16.63 N = 1,746,561.8830 E = 1,142,462.7602

RIDGELAND AVE DATA

P.O.T. STA. = 680+02.45 N = 1,742,854.9219 E = 1,139,431.4980
P.O.T. STA. = 700+00.00 N = 1,744,852.1819 E = 1,139,397.3874
P.O.T. STA. = 720+16.29 N = 1,746,868.1542 E = 1,139,361.8510



TYLIN INTERNATIONAL USER NAME: _____ PLOT SCALE: _____ PLOT DATE: _____	DESIGNED - BES DRAWN - BES CHECKED - JPM DATE - 05/10/2013	REVISED - ADDENDUM 02/07/14 REVISED - REVISED - REVISED -	STATE OF ILLINOIS DEPARTMENT OF TRANSPORTATION	STUENKEL ROAD AT I-57 RIDGELAND AVENUE TO CENTRAL AVENUE ALIGNMENT PLAN SCALE: 1" = 200' SHEET 1 OF 3 SHEETS STA. TO STA.	F.A.I. RTE. 57 SECTION 99-110-R1 COUNTY WILL. TOTAL SHEETS 28 SHEET NO. 28 CONTRACT NO. 60L69
	MATCHLINE STA. 16043+50				
	MATCHLINE STA. 1438+00 SEE SHEET 3				
	MATCHLINE STA. 690+00 - SEE INSET B				

P:\60061201-57.ct.Stuenkel\Road\3\Interchange\VC3_AL_S1102.dgn

Rev. Sheet 2-18-14
 05/10/2013