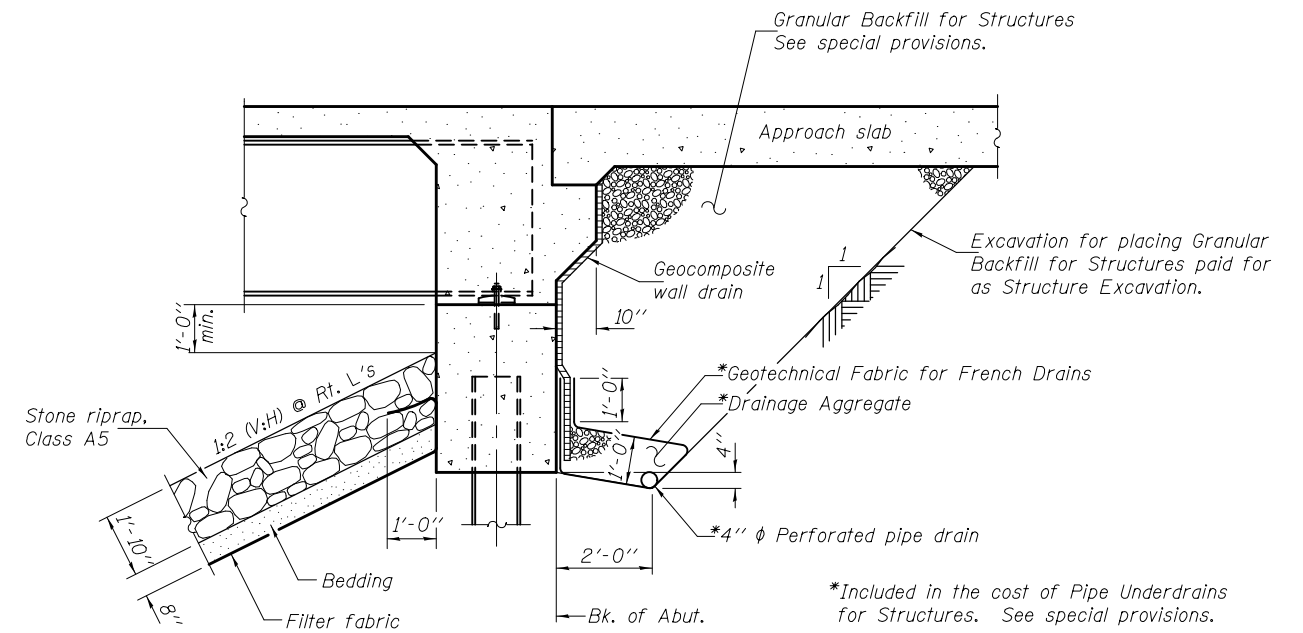
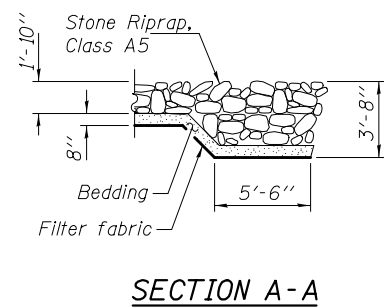
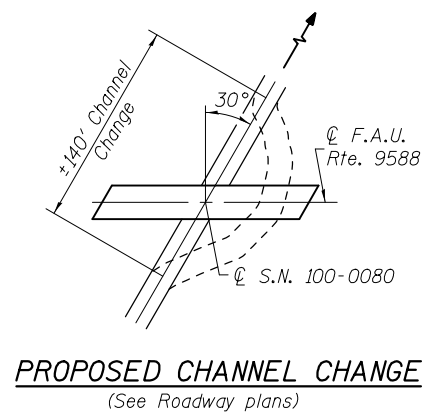


GENERAL NOTES

Fasteners shall be AASHTO M164 Type 3. Bolts $\frac{3}{4}$ " ϕ , holes $\frac{15}{16}$ " ϕ , unless otherwise noted.
 Calculated weight of Structural Steel = 53610 lbs (AASHTO M 270 Gr. 50W).
 All structural steel shall be AASHTO M 270 Gr. 50W.
 No field welding is permitted except as specified in the contract documents.
 Reinforcement bars designated (E) shall be epoxy coated.
 Structural steel shall only be painted for a distance equal to the depth of embedment into the concrete cap plus 3 inches. Painted areas shall be primed in the shop with a Department approved zinc rich primer. Field painting will not be required.
 The embankment configuration shown shall be the minimum that must be placed and compacted prior to construction of the abutments.
 Layout of slope protection system may be varied to suit ground conditions in the field as directed by the Engineer.
 The existing structural steel coating contains lead. The Contractor shall take appropriate precautions to deal with the presence of lead on this project.
 Slip-forming of the parapets is not allowed.

TOTAL BILL OF MATERIAL

ITEM	UNIT	SUPER	SUB	TOTAL
Granular Backfill for Structures	Cu. Yd.		152	152
Stone Riprap, Class A5	Sq. Yd.		645	645
Filter Fabric	Sq. Yd.		645	645
Removal of Existing Structures, No. 1	Each	1		1
Structure Excavation	Cu. Yd.		188	188
Floor Drains	Each	4		4
Concrete Structures	Cu. Yd.		68.6	68.6
Concrete Superstructure	Cu. Yd.	221.6		221.6
Bridge Deck Grooving	Sq. Yd.	483		483
Concrete Encasement	Cu. Yd.		4.2	4.2
Protective Coat	Sq. Yd.	597		597
Furnishing and Erecting Structural Steel	L. Sum	1		1
Stud Shear Connectors	Each	1008		1008
Reinforcement Bars, Epoxy Coated	Pound	52710	6950	59660
Bar Splicers	Each	80		80
Furnishing Steel Piles HP12x53	Foot		495	495
Driving Piles	Foot		495	495
Test Pile Steel HP12x53	Each		1	1
Name Plates	Each	1		1
Anchor Bolt 1"	Each		24	24
Geocomposite Wall Drain	Sq. Yd.		80	80
Pipe Underdrains for Structures, 4"	Foot		173	173



All drainage system components shall extend to 2'-0" from the end of each wingwall except an outlet pipe shall extend until intersecting with the side slopes. The pipes shall drain into concrete headwalls. (See Article 601.05 of the Standard Specifications and Highway Standard 601101).

DESIGNED - Curt M. Evoy	EXAMINED - <i>Joanne F. [Signature]</i> ACTING ENGINEER OF BRIDGE DESIGN	DATE - JANUARY 24, 2014	STATE OF ILLINOIS DEPARTMENT OF TRANSPORTATION	GENERAL DATA STRUCTURE NO. 100-0080	F.A.U. RTE. - 9588	SECTION - 39B-1	COUNTY - WILLIAMSON	TOTAL SHEETS - 224	SHEET NO. - 77
CHECKED - Phillip Coppernoll	PASSED - <i>Carl [Signature]</i> ACTING ENGINEER OF BRIDGES AND STRUCTURES	REVISED			ILLINOIS FED. AID PROJECT				
DRAWN - h.t. duong		REVISED			CONTRACT NO. 78277				
CHECKED - FT/GRA					SHEET NO. 2 OF 18 SHEETS				