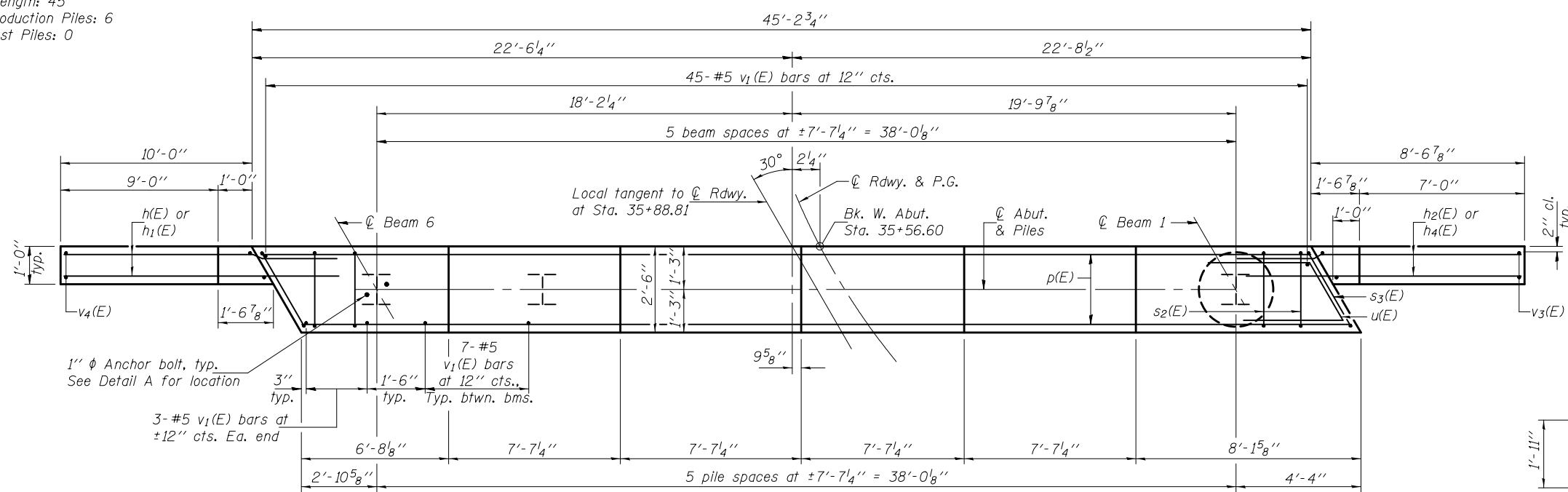
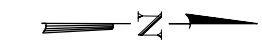


SEC. THRU ABUT.

PILE DATA
 Type: Steel HP12x53
 Nominal Required Bearing: 418 Kips
 Allowable Resistance Available: 139 Kips
 Est. Length: 45'
 No. Production Piles: 6
 No. Test Piles: 0

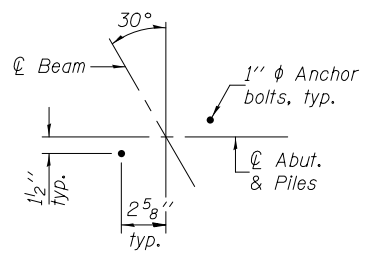
ELEVATION
 (Looking west)



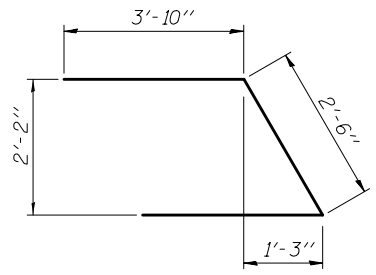
PLAN

BAR u2(E)

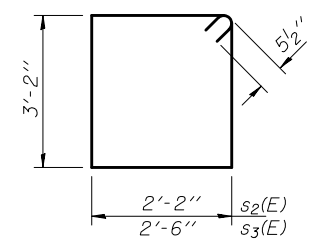
Notes:
 Four steps monolithically with cap.
 Space reinforcement in cap to miss anchor bolts.
 For details of piles and concrete encasement, see sheet 16 of 18.



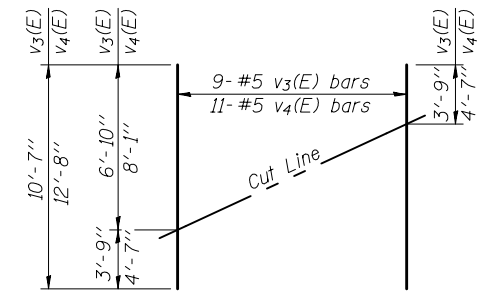
DETAIL "A"



BAR u(E)



BARS s2(E) & s3(E)



FIELD CUTTING DIAGRAM

Order v3(E) & v4(E) full length. Cut as shown and use remainder of bars in opposite face.

BILL OF MATERIAL

Bar	No.	Size	Length	Shape
h(E)	32	#6	13'-4"	—
h1(E)	2	#5	13'-4"	—
h2(E)	2	#5	11'-4"	—
h4(E)	28	#6	11'-0"	—
h5(E)	3	#5	16'-11"	—
h6(E)	3	#5	15'-5"	—
p(E)	9	#7	44'-10"	—
s2(E)	41	#5	11'-7"	□
s3(E)	2	#5	12'-3"	□
u(E)	8	#6	10'-2"	∩
u2(E)	30	#5	6'-0"	∩
v1(E)	86	#5	4'-4"	—
v3(E)	9	#5	10'-7"	—
v4(E)	11	#5	12'-8"	—
Concrete Structures		Cu. Yd.	21.4	
Reinforcement Bars, Epoxy Coated		Pound	3540	
Structure Excavation		Cu. Yd.	95	
Furnishing Steel Piles HP12x53		Foot	270	
Driving Piles		Foot	270	
Concrete Encasement		Cu. Yd.	2.1	
Anchor Bolts, 1"		Each	12	