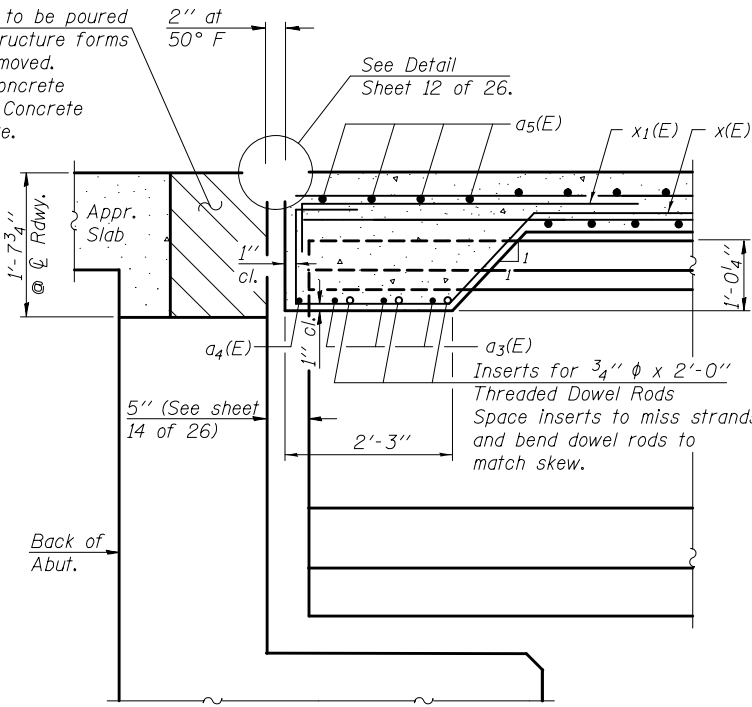
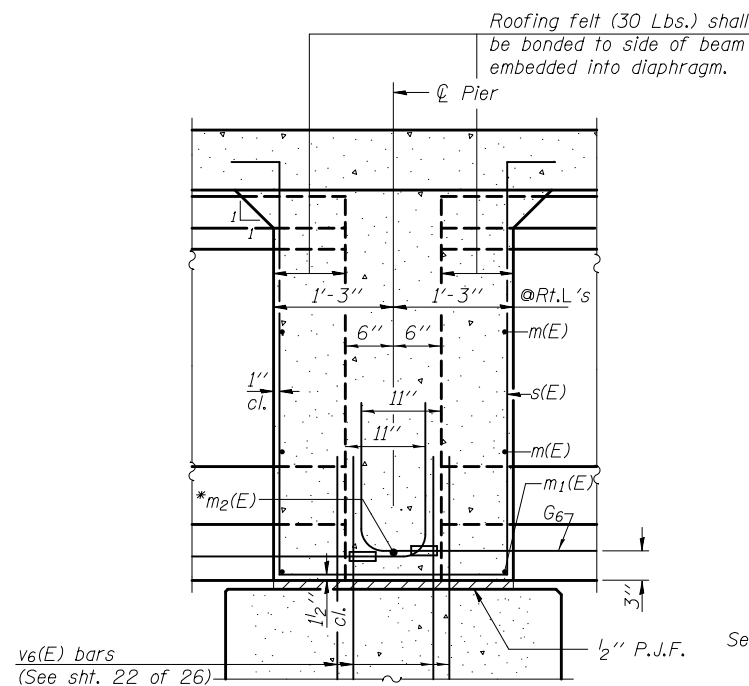


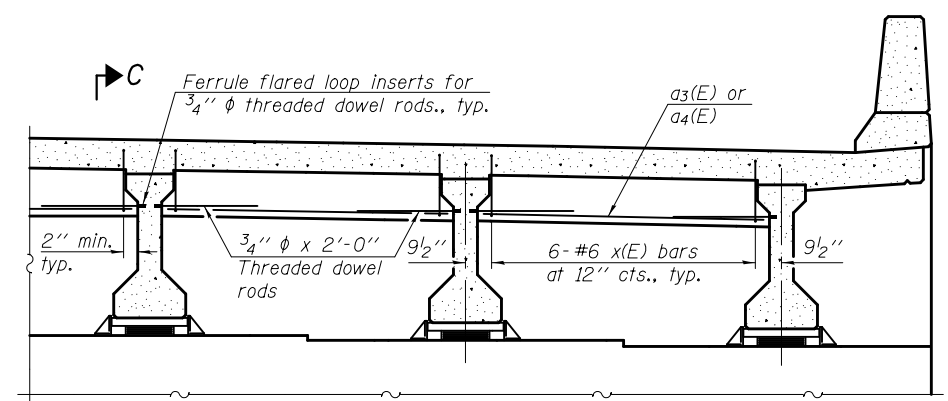
Hatched area to be poured after superstructure forms have been removed. Quantity of concrete included with Concrete Superstructure.



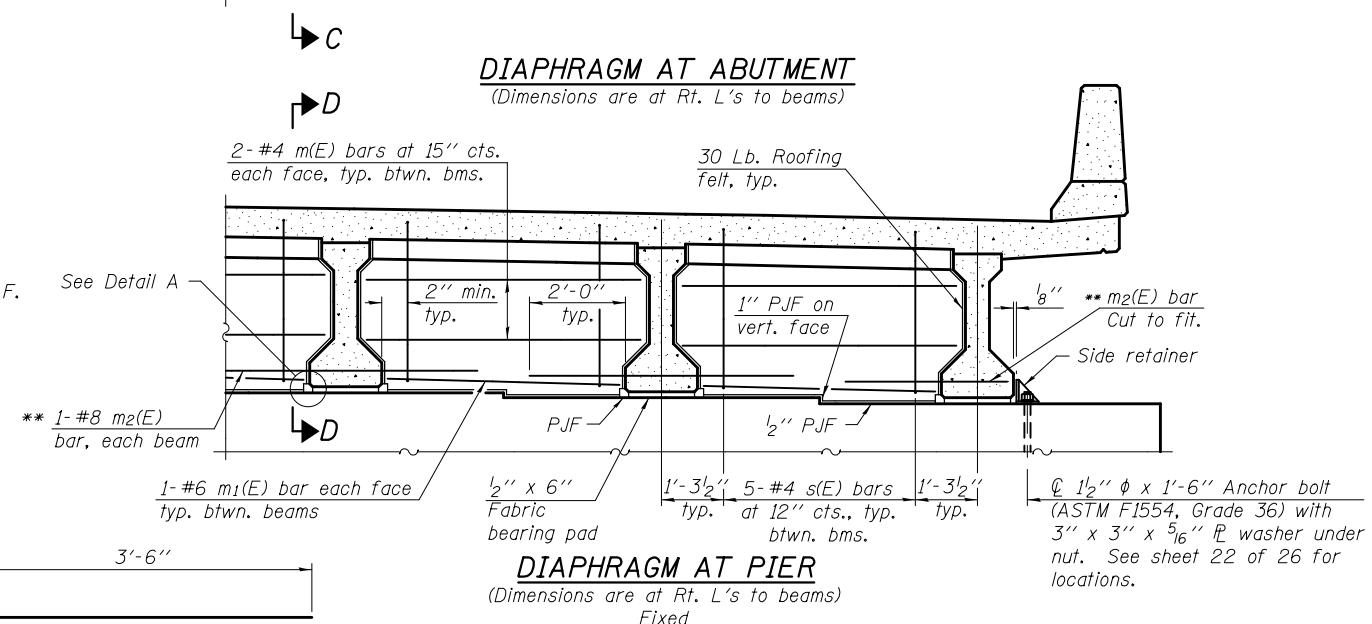
SECTION C-C
(at Rt. Ls.)



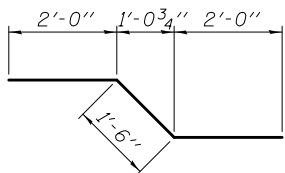
SECTION D-D
(Fixed)



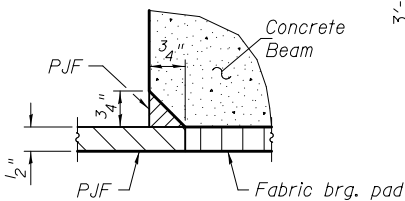
DIAPHRAGM AT ABUTMENT
(Dimensions are at Rt. L's to beams)



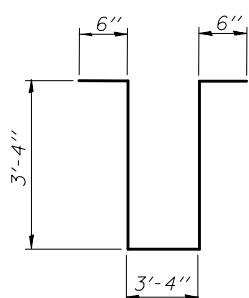
DIAPHRAGM AT PIER
(Dimensions are at Rt. L's to beams)
Fixed



BARS m2(E)



DETAIL 'A'

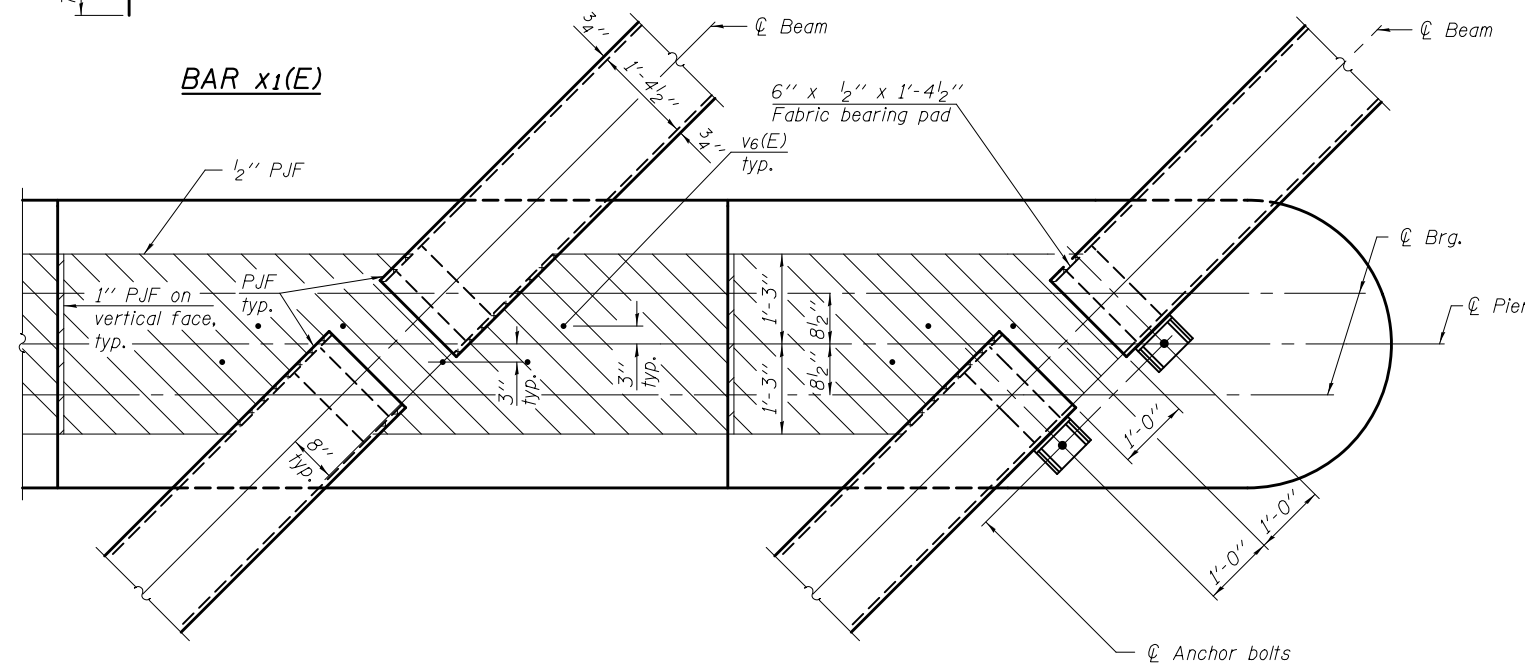


BARS s(E)

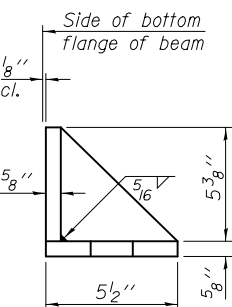
- * Tightly fasten the #8 bars together with No. 9 wire ties.
- ** See Detail B on sheet 14 of 26 for orientation of m2(E) bar.

Notes:
Reinforcement bars in diaphragm are billed with superstructure on sheet 8 of 26.
Concrete in diaphragm is included with Concrete Superstructure on sheet 8 of 26.
The s(E) and x(E) bars shall be placed parallel to the beams. Spacing for these bars shall be at right angles to the beams. Horizontal dimensions for Sec. D-D are along ϕ of beam unless otherwise noted.
Cost of 30 Lb. roofing felt is included with Concrete Superstructure.
The side retainer shall be galvanized after shop fabrication according to AASHTO M 111. Cost of side retainers and anchor bolts shall be included with Concrete Structures.
Anchor bolt assemblies shall be galvanized according to Article 1006.09 of the Standard Specifications.
Anchor bolts shall be ASTM F1554 all-thread (or an Engineer-approved alternate material) of the grade(s) and diameter(s) specified. The corresponding specified grade of AASHTO M314 anchor bolts may be used in lieu of ASTM F1554.
Anchor bolts for side retainers may be cast in place or installed in holes drilled after members are in place and prior to pouring the deck.
Drilled and set anchor bolts shall be installed according to Article 521.06 of the Standard Specifications.

BAR x1(E)

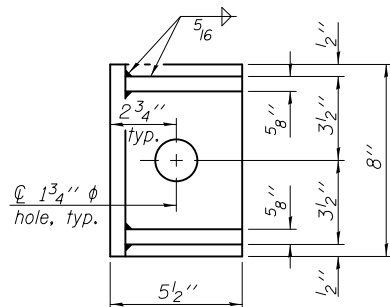


PLAN AT PIER
(Showing fabric bearing pads and P.J.F. details)



SIDE RETAINER

(2 required each side of pier).
Equivalent rolled angle with stiffeners will be allowed in lieu of welded plates.



BAR x(E)

DESIGNED - MARK D. SHAFFER
CHECKED - STEPHEN M. RYAN
DRAWN - MICHAEL B. MOSSMAN
CHECKED - F.T. / G.R.A.

EXAMINED
PASSED
ACTING ENGINEER OF BRIDGES AND STRUCTURES

DATE - JANUARY 24, 2014
REVISED
REVISED

STATE OF ILLINOIS
DEPARTMENT OF TRANSPORTATION

DIAPHRAGM DETAILS
STRUCTURE NO. 100 - 0081

SHEET NO. 9 OF 26 SHEETS

F.A.U. RTE.	SECTION	COUNTY	TOTAL SHEETS	SHEET NO.
9588	39B-2	WILLIAMSON	224	102
				CONTRACT NO. 78277

ILLINOIS FED. AID PROJECT