

F.A.P. RTE.	SECTION	COUNTY	TOTAL SHEETS	SHEET NO.
770	D7 PATCHING 2016-5	SHELBY	7	1
		ILLINOIS	CONTRACT NO. 74737	

STATE OF ILLINOIS
DEPARTMENT OF TRANSPORTATION
DIVISION OF HIGHWAYS

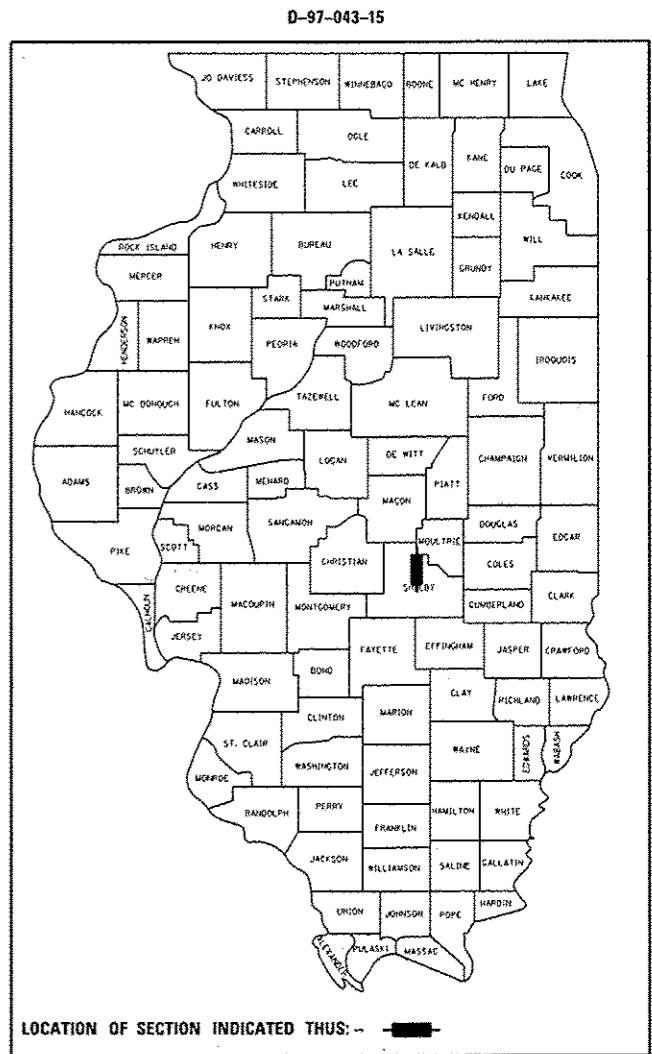
**PROPOSED
HIGHWAY PLANS**

FAP ROUTE 770 (ILL128)
SECTION D7 PATCHING 2016-5
PROPOSED HIGHWAY PLANS
PAVEMENT PATCHING
SHELBY COUNTY

C-97-091-15

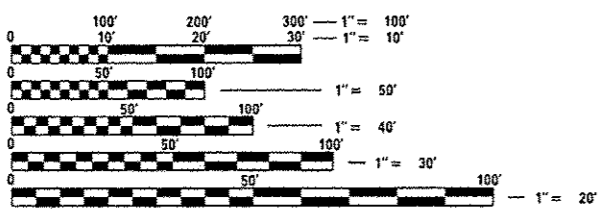
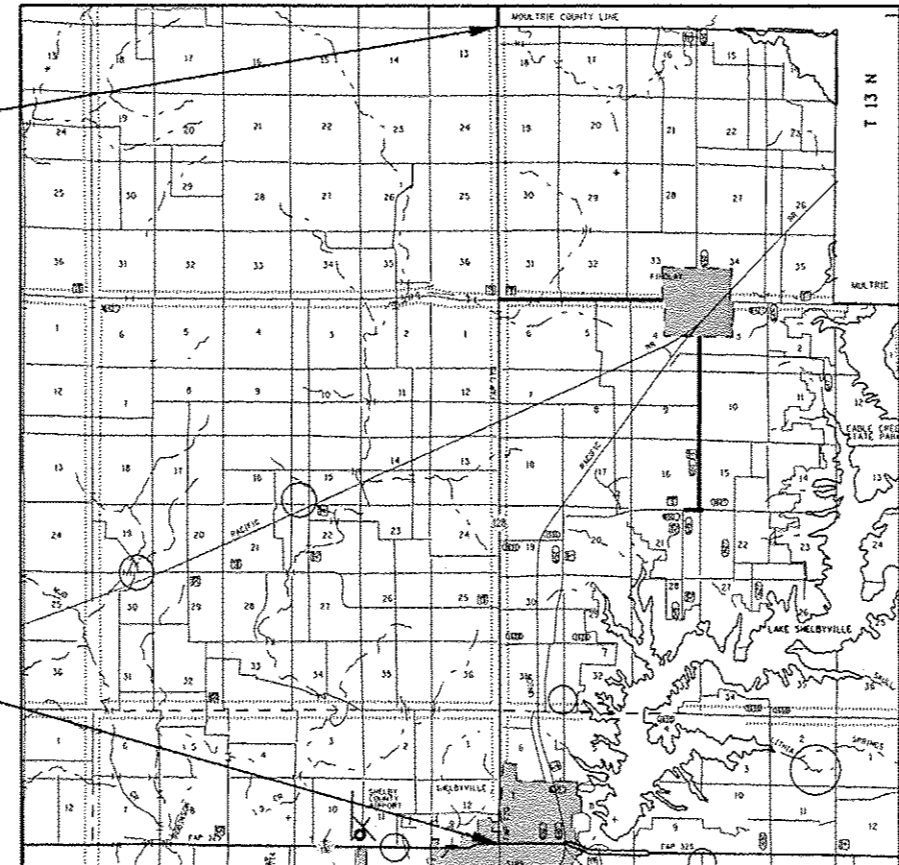
FOR INDEX OF SHEETS, SEE SHEET NO. 2

ADT (2015) = 3200



PROJECT ENDS
STA 632 + 20

PROJECT BEGINS
STA 45 + 60



FULL SIZE PLANS HAVE BEEN PREPARED USING STANDARD ENGINEERING SCALES. REDUCED SIZED PLANS WILL NOT CONFORM TO STANDARD SCALES. IN MAKING MEASUREMENTS ON REDUCED PLANS, THE ABOVE SCALES MAY BE USED.

J.U.L.I.E.
JOINT UTILITY LOCATION INFORMATION FOR EXCAVATION
1-800-892-0123
OR 811

PROJECT ENGINEER: MARK DAUGHERTY
PROJECT MANAGER: CHANDA TEASLEY

CONTRACT NO. 74737

GROSS LENGTH = 58,660 FT. = 11.11 MILE
NET LENGTH = 58,660 FT. = 11.11 MILE

STATE OF ILLINOIS
DEPARTMENT OF TRANSPORTATION
DIVISION OF HIGHWAYS

SUBMITTED December 21, 2015
R. Z. Dandy
DEPUTY DIRECTOR OF HIGHWAYS, REGION ENGINEER

Jan 29, 2016
Margaret M. Adams, P.E.
ENGINEER OF DESIGN AND ENVIRONMENT

Jan 29, 2016
Omer Osman, P.E.
DIRECTOR OF HIGHWAYS, CHIEF ENGINEER

**PRINTED BY THE AUTHORITY
OF THE STATE OF ILLINOIS**

GENERAL NOTES

THIS SECTION SHALL BE CONSTRUCTED IN ACCORDANCE WITH THE PLANS; THE "STANDARD SPECIFICATIONS FOR ROAD AND BRIDGE CONSTRUCTION" ADOPTED JANUARY 1, 2012; THE "SUPPLEMENTAL SPECIFICATIONS AND RECURRING SPECIAL PROVISIONS" INDICATED ON THE CHECK SHEET, AND "THE SPECIAL PROVISIONS" INCLUDED IN THIS PROPOSAL.

THE ACTUAL LOCATIONS OF PAVEMENT PATCHING AND FINAL QUANTITIES SHALL BE DETERMINED BY THE RESIDENT ENGINEER.

THE FOLLOWING MIXTURE REQUIREMENTS ARE APPLICABLE TO THIS PROJECT:

MIXTURE USE(S): CLASS D PAVEMENT PATCHING (BOTTOM 11")
 APPLICATION: HOT MIX ASPHALT BINDER COURSE, N70
 AC/PG: PG 64-22
 DESIGN AIR VOIDS: 4.0% @ 70
 MIXTURE COMPOSITION: IL-19.0
 FRICTION AGGREGATE: N/A

MIXTURE USE(S): CLASS D PAVEMENT PATCHING (TOP 2")
 APPLICATION: HOT MIX ASPHALT SURFACE COURSE, MIX "C", N70
 AC/PG: PG 64-22
 DESIGN AIR VOIDS: 4.0% @ 70
 MIXTURE COMPOSITION: IL-9.5
 FRICTION AGGREGATE: MIXTURE C

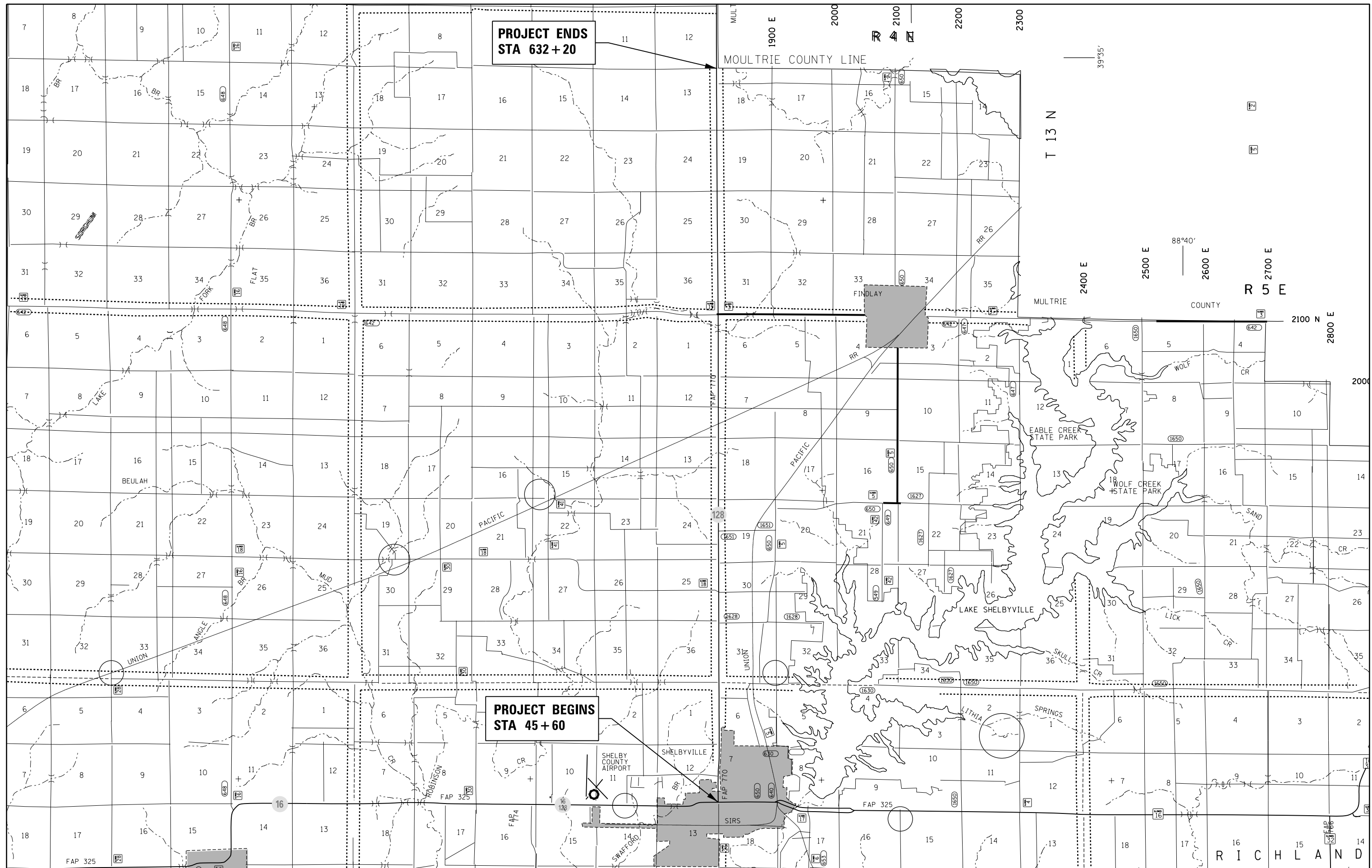
INDEX OF SHEETS

SHEET NO.	DESCRIPTION
1	COVER SHEET
2	GENERAL NOTES, INDEX OF SHEETS AND LIST OF STANDARDS
3	LOCATION MAP
4	SUMMARY OF QUANTITIES
5-7	PATCHING SCHEDULE

THE FOLLOWING STANDARDS ARE A PART OF THESE PLANS AND ARE INCLUDED FOLLOWING SHEET NUMBER 4

STANDARD NO.	DESCRIPTION
000001-06	STANDARD SYMBOLS, ABBREVIATIONS AND PATTERNS
001006	DECIMAL OF AN INCH AND OF A FOOT
442201-03	CLASS C AND D PATCHES
701001-02	OFF-RD OPERATIONS, 2L, 2W, MORE THAN 15' (4.5 m) AWAY
701006-05	OFF-RD OPERATIONS, 2L, 2W, 15' (4.5 m) TO 24" (600 MM) FROM PAVEMENT EDGE
701201-04	LANE CLOSURE, 2L, 2W, DAY ONLY, FOR SPEEDS >= 45 MPH
701301-04	LANE CLOSURE, 2L, 2W, SHORT TIME OPERATIONS
701502-06	URBAN LANE CLOSURE, 2L, 2W, WITH BIDIRECTIONAL LEFT TURN LANE
701701-09	URBAN LANE CLOSURE, MULTILANE INTERSECTION
701901-04	TRAFFIC CONTROL DEVICES

FILE NAME = p:\11084E01\INTEG.ILLINOIS.GOV\PH001\00	USER NAME = steffenmk	DESIGNED -	REVISED -	STATE OF ILLINOIS DEPARTMENT OF TRANSPORTATION	GENERAL NOTES, INDEX OF SHEETS AND LIST OF STANDARDS	F.A.P. RTE.	SECTION	COUNTY	TOTAL SHEETS	SHEET NO.
	PLT SCALE = 100.0000 "/ in.	CHECKED -	REVISED -			770	D7 PATCHING 2016-5	SHELBY	7	2
Default	PLT DATE = 12/22/2015	DATE -	REVISED -	SCALE:	SHEET OF SHEETS STA. TO STA.	ILLINOIS FED. AID PROJECT CONTRACT NO. 74737				



**PROJECT ENDS
STA 632+20**

**PROJECT BEGINS
STA 45+60**

FILE NAME =
 USER NAME = steffennk
 DESIGNED -
 REVISIONS:
 REVISIONS:
 REVISIONS:
 REVISIONS:
 REVISIONS:
 PLOT SCALE = 100.0000' / in.
 CHECKED -
 DATE -
 DATE -

**STATE OF ILLINOIS
DEPARTMENT OF TRANSPORTATION**

SCALE: SHEET OF SHEETS STA. TO STA.

F.A.P. R.E.	SECTION	COUNTY	TOTAL SHEETS	SHEET NO.
770	D7 PATCHING 2016-5	SHELBY	7	3
CONTRACT NO. 74737			ILLINOIS FED. AID PROJECT	

SUMMARY OF QUANTITIES			TOTAL QUANTITIES	CONSTRUCTION TYPE CODE		
CODE NO	ITEM	UNIT		0005		
44201803	CLASS D PATCHES, TYPE II, 13 INCH	SO YD	2436	2436		
44201807	CLASS D PATCHES, TYPE III, 13 INCH	SO YD	639	639		
44201809	CLASS D PATCHES, TYPE IV, 13 INCH	SO YD	160	160		
67100100	MOBILIZATION	LSUM	1	1		
70100450	TRAFFIC CONTROL AND PROTECTION, STANDARD	LSUM	1	1		
	701201					
70102622	TRAFFIC CONTROL AND PROTECTION, STANDARD	LSUM	1	1		
	701502					
70102635	TRAFFIC CONTROL AND PROTECTION, STANDARD	LSUM	1	1		
	701701					
X7015005	CHANGEABLE MESSAGE SIGN	CAL DA	28	28		

Patch Number	Lane	Station	Length ft	Width ft	44201803 Type 2 sy	44201807 Type 3 sy	44201809 Type 4 sy
1	NB (Int)	45+60	6.0	12.0	8.0		
2	SB (Int)	45+60	6.0	12.0	8.0		
3	NB	47+80	6.0	12.0	8.0		
4	SB	51+50	6.0	12.0	8.0		
5	NB	55+30	12.0	12.0		16.0	
6	NB	60+20	6.0	12.0	8.0		
7	SB	60+20	6.0	12.0	8.0		
8	SB	62+30	6.0	12.0	8.0		
9	NB	63+00	6.0	12.0	8.0		
10	NB	64+00	6.0	12.0	8.0		
11	SB	64+00	6.0	12.0	8.0		
12	SB	65+00	6.0	12.0	8.0		
13	NB	65+80	8.0	12.0	10.7		
14	SB	65+80	8.0	12.0	10.7		
15	SB	67+10	6.0	12.0	8.0		
16	NB	75+40	10.0	12.0	13.3		
17	SB	75+40	10.0	12.0	13.3		
18	NB	77+40	6.0	12.0	8.0		
19	SB	77+40	6.0	12.0	8.0		
20	SB	79+70	6.0	12.0	8.0		
21	SB	81+25	8.0	12.0	10.7		
22	NB	84+30	8.0	12.0	10.7		
23	NB	87+60	8.0	12.0	10.7		
24	SB	87+60	8.0	12.0	10.7		
25	NB	88+70	6.0	12.0	8.0		
26	SB	90+70	8.0	12.0	10.7		
27	SB	91+80	6.0	12.0	8.0		
28	NB	92+30	10.0	12.0	13.3		
29	NB	93+08	6.0	12.0	8.0		
30	SB	93+08	6.0	12.0	8.0		
31	SB	95+45	8.0	12.0	10.7		
32	SB	96+15	6.0	12.0	8.0		
33	NB	97+20	6.0	12.0	8.0		
34	SB	97+20	6.0	12.0	8.0		
35	NB	99+43	10.0	12.0	13.3		
36	NB	102+80	6.0	12.0	8.0		
37	SB	102+80	6.0	12.0	8.0		
38	NB	103+45	6.0	12.0	8.0		
39	NB	104+60	6.0	12.0	8.0		
40	SB	104+60	6.0	12.0	8.0		
41	NB	106+90	6.0	12.0	8.0		
42	SB	108+66	6.0	12.0	8.0		
43	NB	108+90	6.0	12.0	8.0		
44	SB	108+90	6.0	12.0	8.0		
45	NB	109+70	8.0	12.0	10.7		
46	SB	109+70	8.0	12.0	10.7		
47	SB	115+30	6.0	12.0	8.0		
48	NB	117+40	6.0	12.0	8.0		
49	SB	117+40	6.0	12.0	8.0		
50	SB	119+90	6.0	12.0	8.0		
51	NB	120+80	6.0	12.0	8.0		
52	SB	120+80	6.0	12.0	8.0		
53	NB	122+31	6.0	12.0	8.0		
54	NB	126+00	8.0	12.0	10.7		
55	SB	126+00	8.0	12.0	10.7		

Patch Number	Lane	Station	Length ft	Width ft	44201803 Type 2 sy	44201807 Type 3 sy	44201809 Type 4 sy
56	SB	132+00	6.0	12.0	8.0		
57	NB	133+93	6.0	12.0	8.0		
58	NB	134+30	6.0	12.0	8.0		
59	SB	134+30	6.0	12.0	8.0		
60	NB	135+00	8.0	12.0	10.7		
61	SB	137+80	6.0	12.0	8.0		
62	NB	135+00	6.0	12.0	8.0		
63	SB	135+00	6.0	12.0	8.0		
64	SB	137+80	6.0	12.0	8.0		
65	NB	145+25	6.0	12.0	8.0		
66	SB	145+25	6.0	12.0	8.0		
67	SB	145+80	8.0	12.0	10.7		
68	SB	152+00	6.0	12.0	8.0		
69	NB	155+60	6.0	12.0	8.0		
70	NB	159+75	6.0	12.0	8.0		
71	SB	159+75	6.0	12.0	8.0		
72	NB	167+40	10.0	12.0	13.3		
73	SB	167+40	10.0	12.0	13.3		
74	NB	170+23	8.0	12.0	10.7		
75	NB	170+40	6.0	12.0	8.0		
76	SB	170+40	6.0	12.0	8.0		
77	SB	172+60	10.0	12.0	13.3		
78	NB	174+60	6.0	12.0	8.0		
79	SB	174+60	6.0	12.0	8.0		
80	NB	177+50	10.0	12.0	13.3		
81	NB	180+50	12.0	12.0		16.0	
82	NB	181+70	8.0	12.0	10.7		
83	SB	181+70	8.0	12.0	10.7		
84	SB	184+10	6.0	12.0	8.0		
85	NB	185+50	6.0	12.0	8.0		
86	SB	185+50	6.0	12.0	8.0		
87	SB	186+30	8.0	12.0	10.7		
88	NB	187+00	6.0	12.0	8.0		
89	SB	187+00	6.0	12.0	8.0		
90	SB	190+70	8.0	12.0	10.7		
91	NB	192+40	10.0	12.0	13.3		
92	SB	192+40	10.0	12.0	13.3		
93	NB	198+50	6.0	12.0	8.0		
94	SB	198+50	6.0	12.0	8.0		
95	NB	199+30	8.0	12.0	10.7		
96	NB	200+00	6.0	12.0	8.0		
97	SB	200+00	6.0	12.0	8.0		
98	NB	206+30	6.0	12.0	8.0		
99	NB	209+90	6.0	12.0	8.0		
100	SB	209+90	6.0	12.0	8.0		
101	SB	211+30	8.0	12.0	10.7		
102	NB	212+80	8.0	12.0	10.7		
103	NB	213+70	8.0	12.0	10.7		
104	NB	217+30	16.0	12.0		21.3	
105	SB	217+30	16.0	12.0		21.3	
106	NB	217+90	6.0	12.0	8.0		
107	SB	217+90	6.0	12.0	8.0		
108	SB	219+20	6.0	12.0	8.0		
109	SB	219+90	8.0	12.0	10.7		
110	NB	221+80	6.0	12.0	8.0		

Patch Number	Lane	Station	Length ft	Width ft	44201803 Type 2 sy	44201807 Type 3 sy	44201809 Type 4 sy
111	SB	221+80	6.0	12.0	8.0		
112	SB	225+50	6.0	12.0	8.0		
113	NB	226+70	6.0	12.0	8.0		
114	NB	228+80	6.0	12.0	8.0		
115	SB	228+80	6.0	12.0	8.0		
116	NB	233+60	12.0	12.0		16.0	
117	SB	233+60	12.0	12.0		16.0	
118	SB	237+40	8.0	12.0	10.7		
119	NB	237+76	8.0	12.0	10.7		
120	SB	246+80	8.0	12.0	10.7		
121	SB	247+90	6.0	12.0	8.0		
122	NB	249+30	6.0	12.0	8.0		
123	NB	250+30	6.0	12.0	8.0		
124	NB	254+13	6.0	12.0	8.0		
125	SB	254+13	6.0	12.0	8.0		
126	SB	258+23	6.0	12.0	8.0		
127	SB	260+30	6.0	12.0	8.0		
128	NB	262+20	6.0	12.0	8.0		
129	NB	267+00	6.0	12.0	8.0		
130	SB	267+00	6.0	12.0	8.0		
131	NB	274+60	8.0	12.0	10.7		
132	SB	276+00	12.0	12.0		16.0	
133	SB	282+07	12.0	12.0		16.0	
134	NB	284+66	10.0	12.0	13.3		
135	NB	286+80	8.0	12.0	10.7		
136	SB	286+80	8.0	12.0	10.7		
137	SB	289+30	6.0	12.0	8.0		
138	NB	292+80	6.0	12.0	8.0		
139	NB	295+60	10.0	12.0	13.3		
140	NB	296+20	6.0	12.0	8.0		
141	SB	296+20	6.0	12.0	8.0		
142	SB	298+99	6.0	12.0	8.0		
143	NB	299+60	12.0	12.0		16.0	
144	SB	303+00	12.0	12.0		16.0	
145	NB	303+30	6.0	12.0	8.0		
146	SB	303+30	6.0	12.0	8.0		
147	NB	348+95	12.0	12.0		16.0	
148	SB	348+95	12.0	12.0		16.0	
149	NB	351+40	12.0	12.0		16.0	
150	NB	351+80	6.0	12.0	8.0		
151	NB	353+00	6.0	12.0	8.0		
152	SB	353+00	6.0	12.0	8.0		
153	NB	357+00	6.0	12.0	8.0		
154	SB	357+40	6.0	12.0	8.0		
155	NB	358+50	6.0	12.0	8.0		
156	SB	358+50	6.0	12.0	8.0		
157	NB	359+30	8.0	12.0	10.7		
158	NB	362+60	8.0	12.0	10.7		
159	NB	370+60	8.0	12.0	10.7		
160	SB	370+60	8.0	12.0	10.7		
161	NB	371+20	6.0	12.0	8.0		
162	SB	371+20	6.0	12.0	8.0		
163	NB	374+60	6.0	12.0	8.0		
164	SB	374+60	6.0	12.0	8.0		
165	NB	376+80	8.0	12.0	10.7		

RR overpass 323+00

Patch Number	Lane	Station	Length ft	Width ft	44201803 Type 2 sy	44201807 Type 3 sy	44201809 Type 4 sy
166	SB	376+80	8.0	12.0	10.7		
167	SB	377+60	6.0	12.0	8.0		
168	NB	379+70	6.0	12.0	8.0		
169	SB	379+70	6.0	12.0	8.0		
170	SB	383+00	6.0	12.0	8.0		
171	NB	383+40	6.0	12.0	8.0		
172	NB	384+55	6.0	12.0	8.0		
173	SB	384+55	6.0	12.0	8.0		
174	SB	386+35	6.0	12.0	8.0		
175	NB	388+35	10.0	12.0	13.3		
176	SB	388+35	10.0	12.0	13.3		
177	NB	391+20	12.0	12.0		16.0	
178	SB	391+20	12.0	12.0		16.0	
179	SB	394+70	12.0	12.0		16.0	
180	NB	396+60	6.0	12.0	8.0		
181	SB	396+60	6.0	12.0	8.0		
182	NB	397+40	6.0	12.0	8.0		
183	NB	397+95	6.0	12.0	8.0		
184	SB	397+95	6.0	12.0	8.0		
185	NB	401+50	40.0	12.0			53.3
186	SB	401+50	40.0	12.0			53.3
187	NB	414+40	12.0	12.0		16.0	
188	SB	414+40	12.0	12.0		16.0	
189	NB	416+50	6.0	12.0	8.0		
190	SB	416+50	6.0	12.0	8.0		
191	NB	430+80	12.0	12.0		16.0	
192	SB	430+80	12.0	12.0		16.0	
193	NB	433+40	6.0	12.0	8.0		
194	SB	433+40	6.0	12.0	8.0		
195	SB	433+35	6.0	12.0	8.0		
196	NB	440+70	12.0	12.0		16.0	
197	SB	440+70	12.0	12.0		16.0	
198	NB	443+10	6.0	12.0	8.0		
199	SB	443+10	6.0	12.0	8.0		
200	NB	452+00	8.0	12.0	10.7		
201	SB	452+00	8.0	12.0	10.7		
202	SB	458+30	20.0	12.0			26.7
203	NB	461+20	6.0	12.0	8.0		
204	SB	461+20	6.0	12.0	8.0		
205	NB	463+50	10.0	12.0	13.3		
206	NB	463+62	6.0	12.0	8.0		
207	SB	463+62	6.0	12.0	8.0		
208	NB	464+80	8.0	12.0	10.7		
209	SB	464+80	8.0	12.0	10.7		
210	NB	468+60	6.0	12.0	8.0		
211	SB	468+60	12.0	12.0		16.0	
212	NB	469+05	6.0	12.0	8.0		
213	SB	469+05	6.0	12.0	8.0		
214	NB	472+20	8.0	12.0	10.7		
215	NB	474+25	8.0	12.0	10.7		
216	SB	474+25	8.0	12.0	10.7		
217	NB	477+60	12.0	12.0		16.0	
218	SB	480+75	6.0	12.0	8.0		
219	NB	493+20	12.0	12.0		16.0	
220	SB	493+20	12.0	12.0		16.0	

FILE NAME =	USER NAME = steffenmk	DESIGNED -	REVISED -
p:\11\084EBIDINTEG.illinois.gov\PI\DOT\Documents\DOT Offices\District 7\Projects\7479\Drawings\CAD\Sheets\0774737-sht-schedule		DATE -	REVISED -
Default	PLOT SCALE = 100.0000' / in.	CHECKED -	REVISED -
	PLOT DATE = 12/22/2015	DATE -	REVISED -

STATE OF ILLINOIS
DEPARTMENT OF TRANSPORTATION

PATCHING SCHEDULE

SCALE: SHEET OF SHEETS STA. TO STA.

F.A.P. RTE.	SECTION	COUNTY	TOTAL SHEETS	SHEET NO.
770	D7 PATCHING 2016-5	SHELBY	7	6
ILLINOIS FED. AID PROJECT			CONTRACT NO. 74737	

Patch Number	Lane	Station	Length ft	Width ft	44201803 Type 2 sy	44201807 Type 3 sy	44201809 Type 4 sy
221	NB	493+75	6.0	12.0	8.0		
222	NB	495+30	8.0	12.0	10.7		
223	SB	495+30	8.0	12.0	10.7		
224	NB	495+80	6.0	12.0	8.0		
225	SB	495+80	6.0	12.0	8.0		
226	SB	497+15	8.0	12.0	10.7		
227	NB	498+00	8.0	12.0	10.7		
228	SB	498+00	8.0	12.0	10.7		
229	NB	500+30	8.0	12.0	10.7		
230	NB	502+50	8.0	12.0	10.7		
231	SB	502+50	8.0	12.0	10.7		
232	NB	503+20	6.0	12.0	8.0		
233	SB	503+20	6.0	12.0	8.0		
234	SB	506+30	6.0	12.0	8.0		
235	NB	508+70	8.0	12.0	10.7		
236	SB	508+70	8.0	12.0	10.7		
237	NB	523+40	6.0	12.0	8.0		
238	NB	528+00	12.0	12.0		16.0	
239	SB	528+00	12.0	12.0		16.0	
240	NB	530+34	8.0	12.0	10.7		
241	SB	530+34	8.0	12.0	10.7		
242	SB	531+97	6.0	12.0	8.0		
243	NB	532+40	6.0	12.0	8.0		
244	SB	532+40	6.0	12.0	8.0		
245	SB	532+90	15.0	12.0		20.0	
246	NB	535+00	12.0	12.0		16.0	
247	NB	538+90	12.0	12.0		16.0	
248	SB	538+90	12.0	12.0		16.0	
249	SB	543+10	6.0	12.0	8.0		
250	NB	545+90	12.0	12.0		16.0	
251	SB	545+90	12.0	12.0		16.0	
252	NB	552+00	6.0	12.0	8.0		
253	SB	552+00	6.0	12.0	8.0		
254	SB	553+40	12.0	12.0		16.0	
255	NB	554+20	6.0	12.0	8.0		
256	SB	554+20	6.0	12.0	8.0		
257	NB	554+20	6.0	12.0	8.0		
258	NB	555+65	6.0	12.0	8.0		
259	SB	555+65	6.0	12.0	8.0		
260	NB	555+78	6.0	12.0	8.0		
261	SB	555+78	6.0	12.0	8.0		
262	SB	559+60	6.0	12.0	8.0		
263	NB	560+05	6.0	12.0	8.0		
264	SB	560+05	6.0	12.0	8.0		
265	NB	563+30	12.0	12.0		16.0	
266	SB	563+30	12.0	12.0		16.0	
267	SB	564+80	6.0	12.0	8.0		
268	NB	566+60	10.0	12.0	13.3		
269	SB	566+60	10.0	12.0	13.3		
270	NB	568+80	6.0	12.0	8.0		
271	NB	569+30	6.0	12.0	8.0		
272	SB	569+30	6.0	12.0	8.0		
273	NB	572+70	6.0	12.0	8.0		
274	NB	574+60	12.0	12.0		16.0	
275	SB	574+60	12.0	12.0		16.0	

Patch Number	Lane	Station	Length ft	Width ft	44201803 Type 2 sy	44201807 Type 3 sy	44201809 Type 4 sy
276	NB	577+30	10.0	12.0	13.3		
277	SB	577+30	10.0	12.0	13.3		
278	SB	577+98	6.0	12.0	8.0		
279	NB	581+00	6.0	12.0	8.0		
280	NB	583+80	6.0	12.0	8.0		
281	SB	583+80	6.0	12.0	8.0		
282	SB	585+00	6.0	12.0	8.0		
283	NB	586+70	6.0	12.0	8.0		
284	NB	587+75	6.0	12.0	8.0		
285	SB	587+75	6.0	12.0	8.0		
286	SB	593+60	10.0	12.0	13.3		
287	NB	594+30	6.0	12.0	8.0		
288	SB	594+30	6.0	12.0	8.0		
289	NB	606+40	20.0	12.0			26.7
290	SB	606+40	6.0	12.0	8.0		
291	SB	606+80	6.0	12.0	8.0		
292	NB	607+40	6.0	12.0	8.0		
293	SB	607+40	6.0	12.0	8.0		
294	NB	611+50	8.0	12.0	10.7		
295	NB	613+96	10.0	12.0	13.3		
296	SB	613+96	10.0	12.0	13.3		
297	SB	617+00	8.0	12.0	10.7		
298	NB	618+30	10.0	12.0	13.3		
299	NB	620+50	8.0	12.0	10.7		
300	SB	620+50	8.0	12.0	10.7		
301	SB	621+34	6.0	12.0	8.0		
302	SB	623+50	10.0	12.0	13.3		
303	NB	624+40	6.0	12.0	8.0		
304	NB	627+00	10.0	12.0	13.3		
305	SB	627+00	10.0	12.0	13.3		
306	SB	627+71	6.0	12.0	8.0		
307	NB	627+88	6.0	12.0	8.0		
308	NB	631+55	8.0	12.0	10.7		
309	NB	632+20	6.0	12.0	8.0		
310	SB	632+20	6.0	12.0	8.0		
Shelby Co / Moultrie Co Line					2435.8	638.6	160.0

TOTAL PATCHING	3234.4 SQ. YD.
----------------	----------------

FILE NAME =	USER NAME = steffennk	DESIGNED -	REVISED -
pw:\IL084EBIDINTEG.illinois.gov\PIWIDOT\Documents\DOT Offices\District 7\Projects\74737\Drawings\CAD\sheds\0774737-sht-schedule.dwg		CHECKED -	REVISED -
Default	PLOT DATE = 12/22/2015	DATE -	REVISED -

**STATE OF ILLINOIS
DEPARTMENT OF TRANSPORTATION**

PATCHING SCHEDULE

SCALE: SHEET OF SHEETS STA. TO STA.

F.A.P. RTE.	SECTION	COUNTY	TOTAL SHEETS	SHEET NO.
770	D7 PATCHING 2016-5	SHELBY	7	7
CONTRACT NO. 74737			ILLINOIS FED. AID PROJECT	