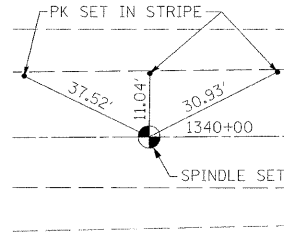


**CONTROL POINT
CENTERLINE TIE**

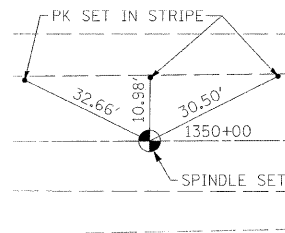


SPINDLE SET ON CL FAP 796 (IL 115)

STA. 1340 + 00

NORTHING 1547422.1700
EASTING 1019207.2960

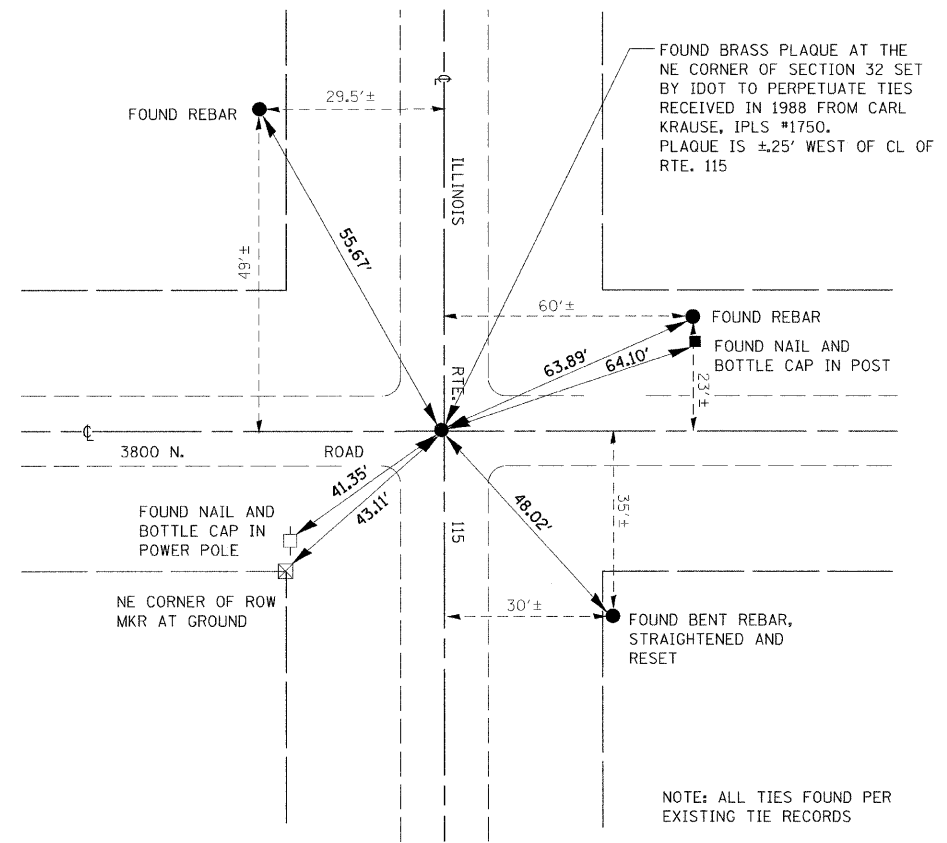
**CONTROL POINT
CENTERLINE TIE**



SPINDLE SET ON CL FAP 796 (IL 115)

STA. 1350 + 00

NORTHING 1546422.5550
EASTING 1019235.0280



REBAR ON CL FAP 796 (IL 115)

STA. 1260 + 27.90

NORTHING 1555398.9398
EASTING 1019016.4840

benesch

alfred benesch & company
Engineers • Surveyors • Planners
205 North Michigan Avenue, Suite 2400
Chicago, Illinois 60601
312-965-0450
Job # 3838.02

FILE NAME = \$FILEL#	USER NAME = #USER#	DESIGNED - HMA	REVISED -	STATE OF ILLINOIS DEPARTMENT OF TRANSPORTATION	TIE POINTS		F.A.P. RTE.	SECTION	COUNTY	TOTAL SHEETS	SHEET NO.	
		DRAWN - HMA	REVISED -		SCALE: NONE	SHEET NO. 1 OF 1 SHEETS	STA.	TO STA.	796	104 I & 105 BR-1	FORD	51 6
		CHECKED - DJC	REVISED -									
		DATE - 10/24/09	REVISED -									
							CONTRACT NO. 66848					
							FED. ROAD DIST. NO. ILLINOIS FED. AID PROJECT					